

Legend

Area of Investigation

Inundation - Area 1

Inundation - Area 2

Inundation - Area 3

Inundation - Area 4

Inundation Area

Major Road

Minor Road

Waterbody

Wetland Swamp

Cadastre

Local Government Areas

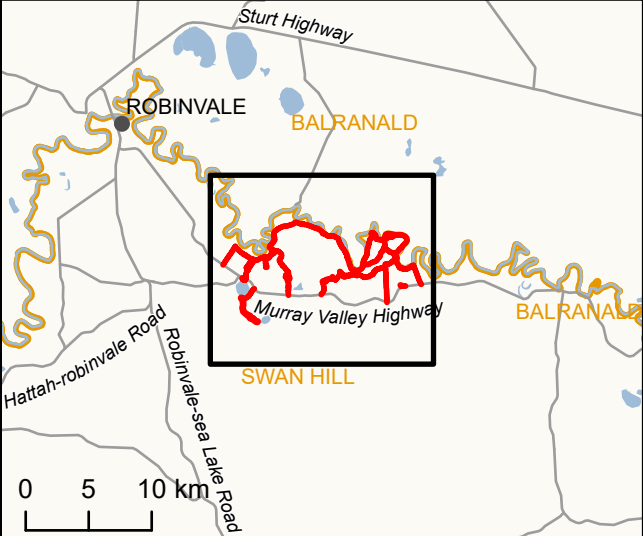
IS297792

01,0002,000

Metres

DATA SOURCES
© Commonwealth of Australia (Geoscience Australia) 2006 Geodata Topo 250k Series 3; Vicmap Data © State of Victoria 2019; Jacobs & GHD 2019 - 20.

COPYRIGHT: The concepts and information contained in this document are the copyright of Jacobs. Use or copying of the document in whole or in part without the written permission of Jacobs constitutes an infringement of copyright. Jacobs does not warrant that this document is definitive nor free of error and does not accept liability for any loss caused or arising from reliance upon information provided herein.





Legend

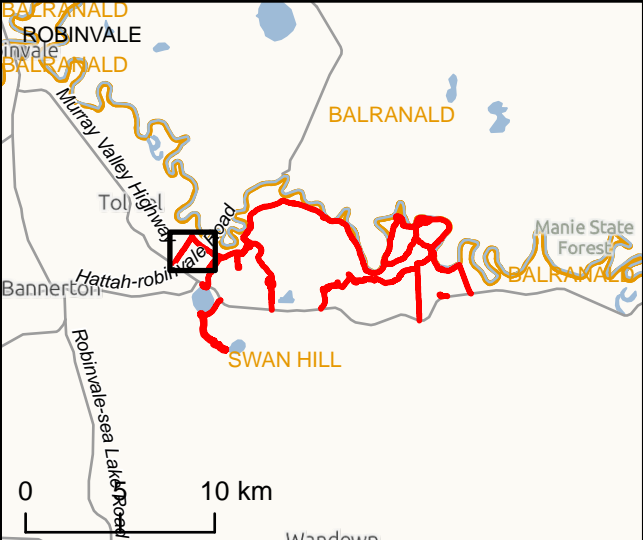
- Development Footprint
- Area of Investigation
- Construction Footprint
- Major Road
- Waterbody
- Cadastre
- Local Government Areas

IS297792

0 100 200
Metres

DATA SOURCES
© Commonwealth of Australia (Geoscience Australia) 2006 Geodata Topo 250k Series 3; Vicmap Data © State of Victoria 2019; Jacobs & GHD 2019 - 20.

COPYRIGHT: The concepts and information contained in this document are the copyright of Jacobs. Use or copying of the document in whole or in part without the written permission of Jacobs constitutes an infringement of copyright. Jacobs does not warrant that this document is definitive nor free of error and does not accept liability for any loss caused or arising from reliance upon information provided herein.





Legend

- Development Footprint
- Area of Investigation
- Construction Footprint
- Inundation Area
- Major Road
- Waterbody
- Cadastre
- Local Government Areas

±

0 100 200

Metres

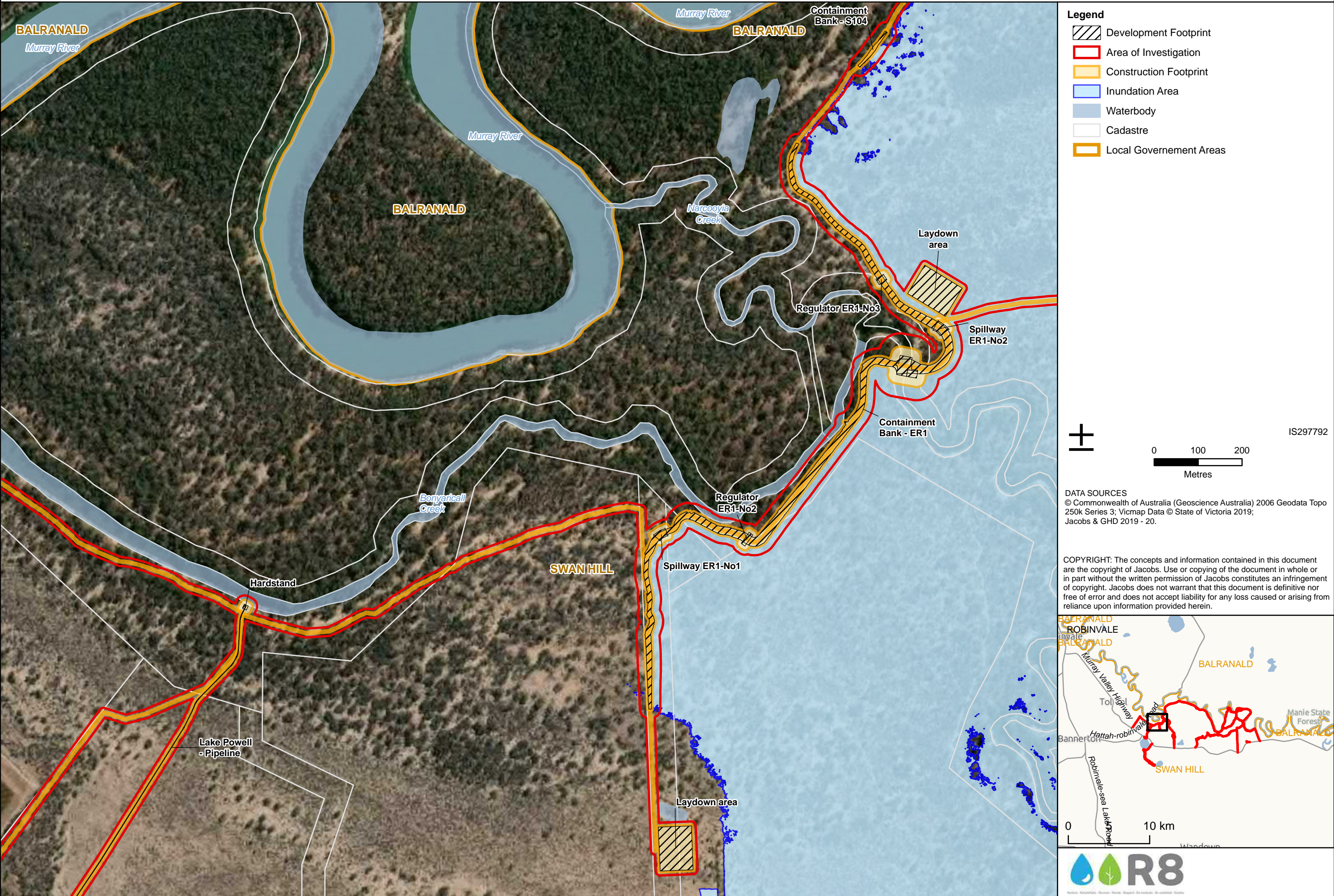
IS297792

DATA SOURCES

© Commonwealth of Australia (Geoscience Australia) 2006 Geodata Topo 250k Series 3; Vicmap Data © State of Victoria 2019; Jacobs & GHD 2019 - 20.

COPYRIGHT: The concepts and information contained in this document are the copyright of Jacobs. Use or copying of the document in whole or in part without the written permission of Jacobs constitutes an infringement of copyright. Jacobs does not warrant that this document is definitive nor free of error and does not accept liability for any loss caused or arising from reliance upon information provided herein.

0 10 km





Legend

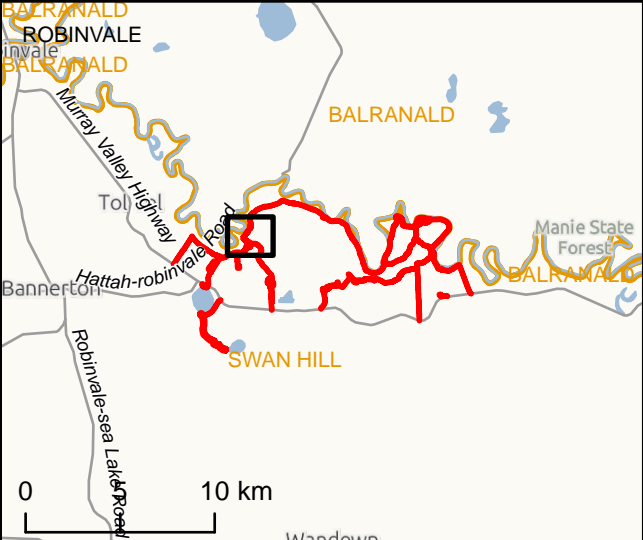
- Development Footprint
- Area of Investigation
- Construction Footprint
- Inundation Area
- Waterbody
- Cadastre
- Local Government Areas

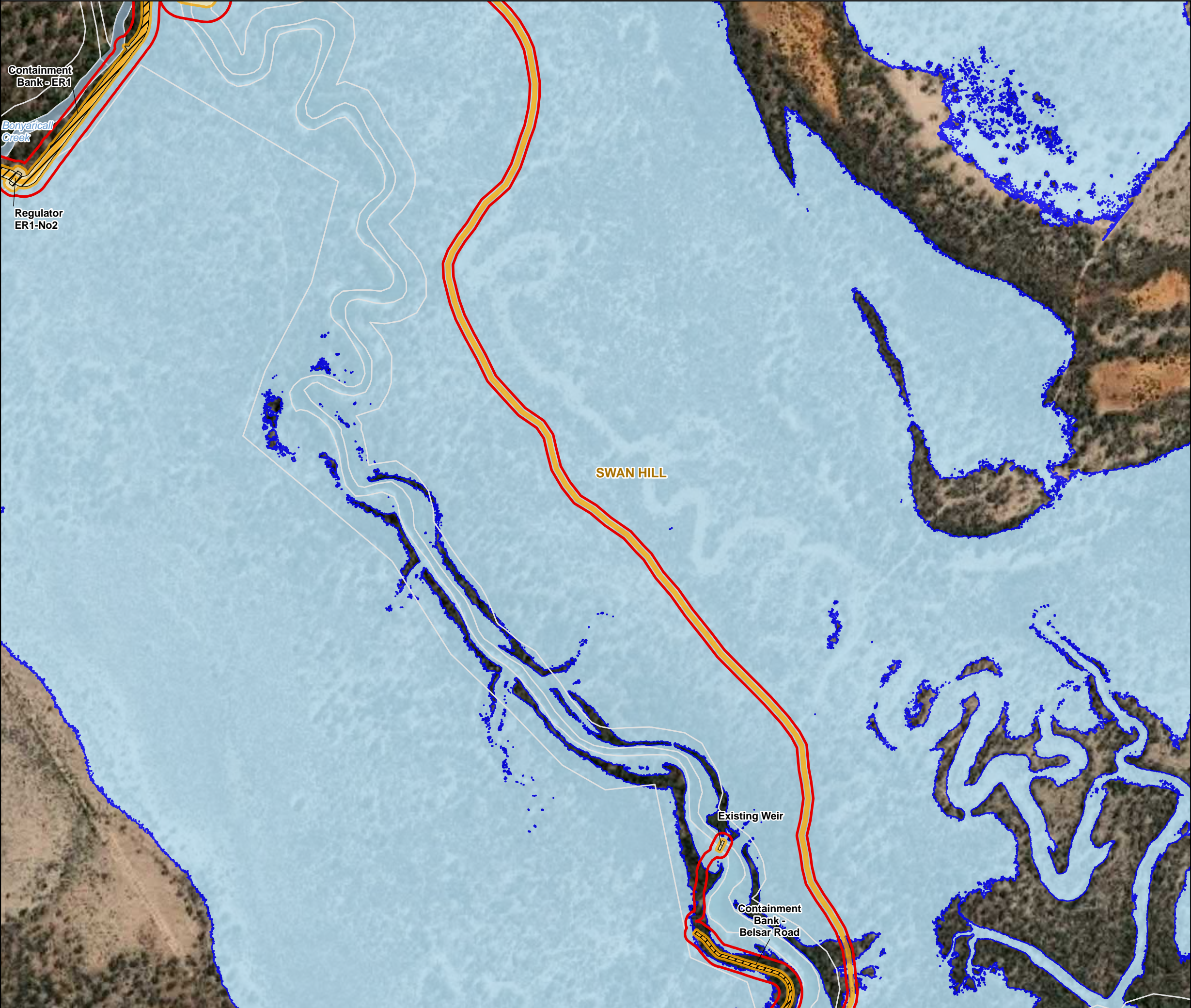
IS297792

0 100 200
Metres

DATA SOURCES
 © Commonwealth of Australia (Geoscience Australia) 2006 Geodata Topo 250k Series 3; Vicmap Data © State of Victoria 2019; Jacobs & GHD 2019 - 20.

COPYRIGHT: The concepts and information contained in this document are the copyright of Jacobs. Use or copying of the document in whole or in part without the written permission of Jacobs constitutes an infringement of copyright. Jacobs does not warrant that this document is definitive nor free of error and does not accept liability for any loss caused or arising from reliance upon information provided herein.





Legend

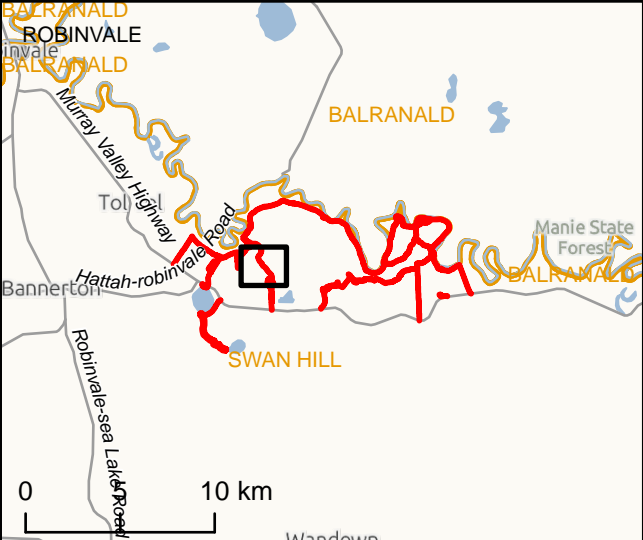
- Development Footprint
- Area of Investigation
- Construction Footprint
- Inundation Area
- Waterbody
- Cadastre
- Local Government Areas

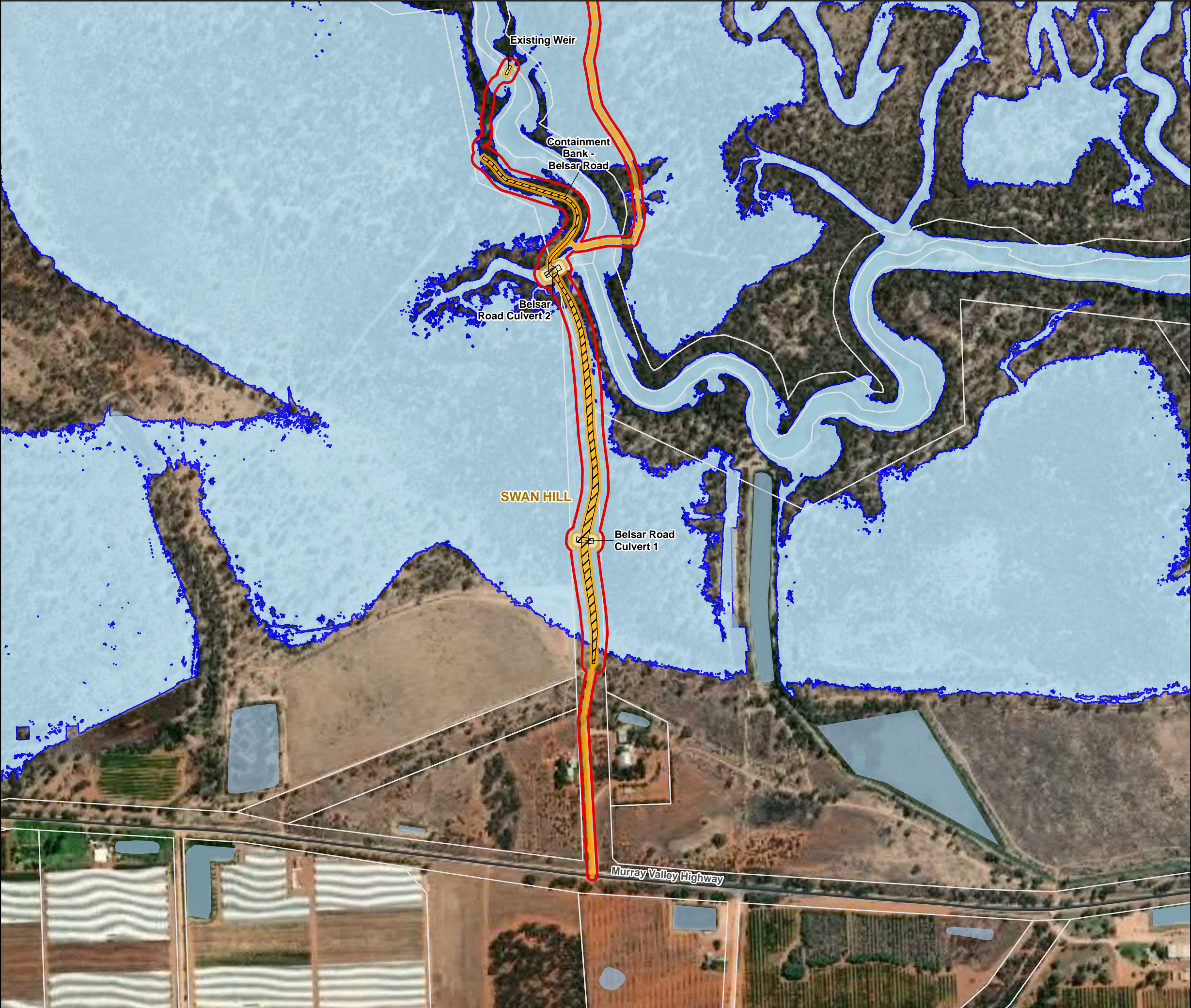
IS297792

0 100 200
Metres

DATA SOURCES
© Commonwealth of Australia (Geoscience Australia) 2006 Geodata Topo 250k Series 3; Vicmap Data © State of Victoria 2019; Jacobs & GHD 2019 - 20.

COPYRIGHT: The concepts and information contained in this document are the copyright of Jacobs. Use or copying of the document in whole or in part without the written permission of Jacobs constitutes an infringement of copyright. Jacobs does not warrant that this document is definitive nor free of error and does not accept liability for any loss caused or arising from reliance upon information provided herein.





Legend

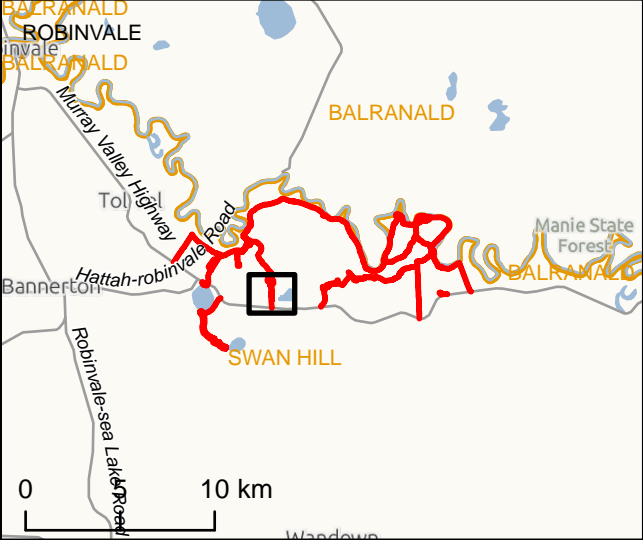
- Development Footprint
- Area of Investigation
- Construction Footprint
- Inundation Area
- Major Road
- Waterbody
- Cadastre
- Local Government Areas

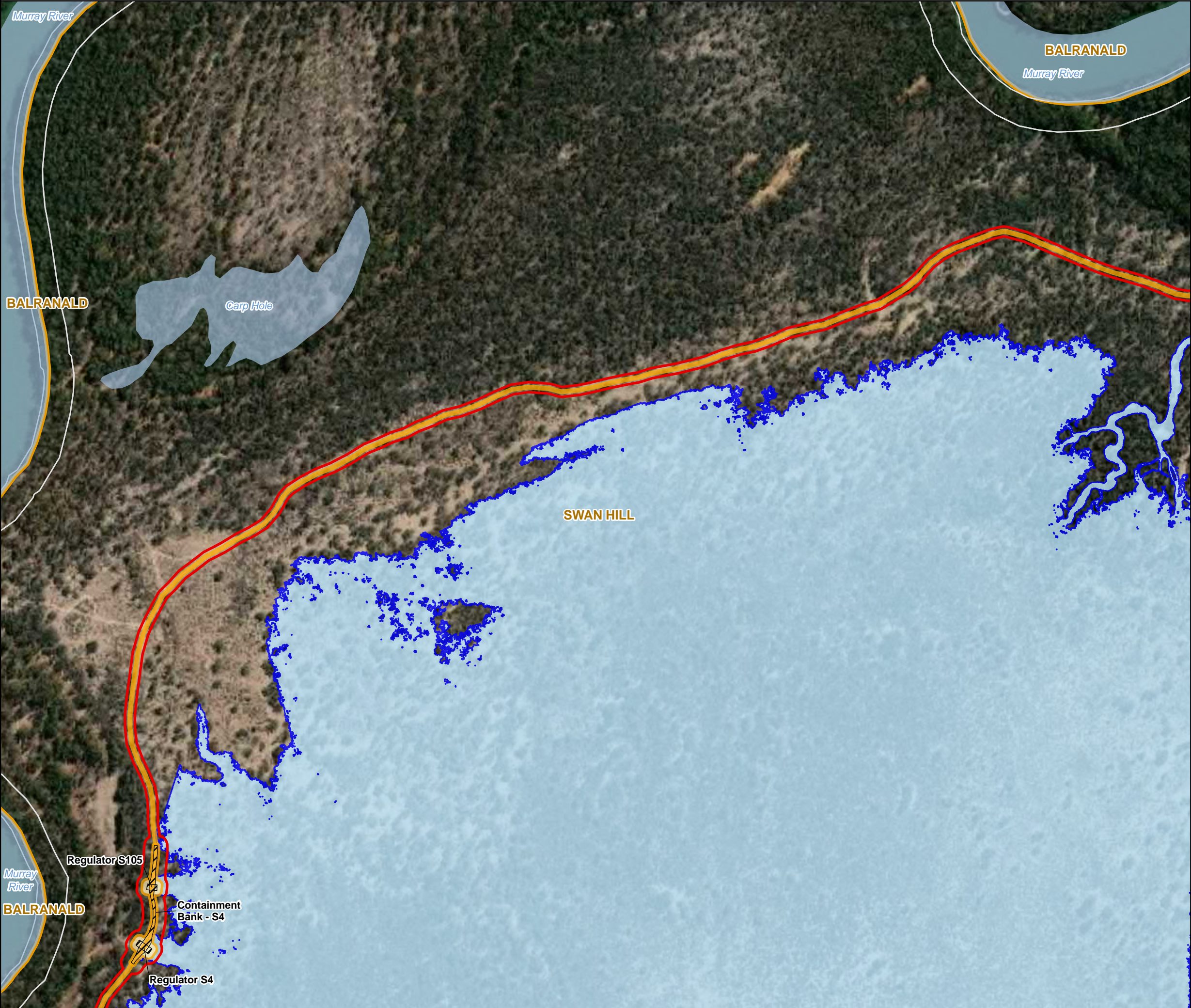
IS297792

0 100 200
Metres

DATA SOURCES
© Commonwealth of Australia (Geoscience Australia) 2006 Geodata Topo 250k Series 3; Vicmap Data © State of Victoria 2019; Jacobs & GHD 2019 - 20.

COPYRIGHT: The concepts and information contained in this document are the copyright of Jacobs. Use or copying of the document in whole or in part without the written permission of Jacobs constitutes an infringement of copyright. Jacobs does not warrant that this document is definitive nor free of error and does not accept liability for any loss caused or arising from reliance upon information provided herein.





Legend

- Development Footprint
- Area of Investigation
- Construction Footprint
- Inundation Area
- Waterbody
- Cadastre
- Local Government Areas

±

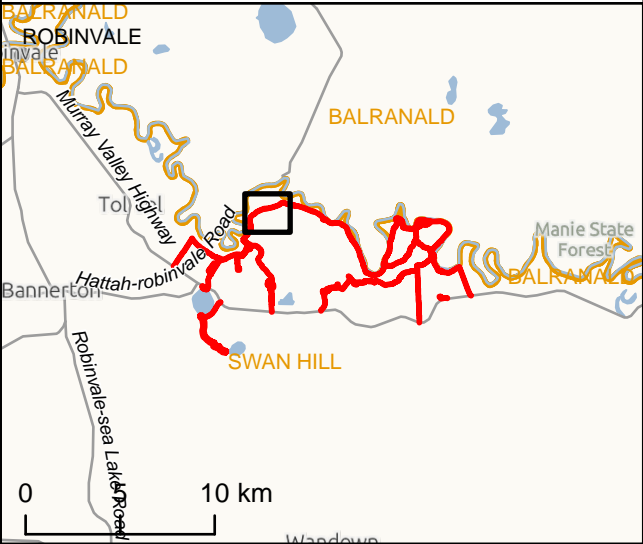
0 100 200

Metres

IS297792

DATA SOURCES
© Commonwealth of Australia (Geoscience Australia) 2006 Geodata Topo 250k Series 3; Vicmap Data © State of Victoria 2019; Jacobs & GHD 2019 - 20.

COPYRIGHT: The concepts and information contained in this document are the copyright of Jacobs. Use or copying of the document in whole or in part without the written permission of Jacobs constitutes an infringement of copyright. Jacobs does not warrant that this document is definitive nor free of error and does not accept liability for any loss caused or arising from reliance upon information provided herein.





Legend

- Development Footprint
- Area of Investigation
- Construction Footprint
- Inundation Area
- Waterbody
- Cadastre
- Local Government Areas

±

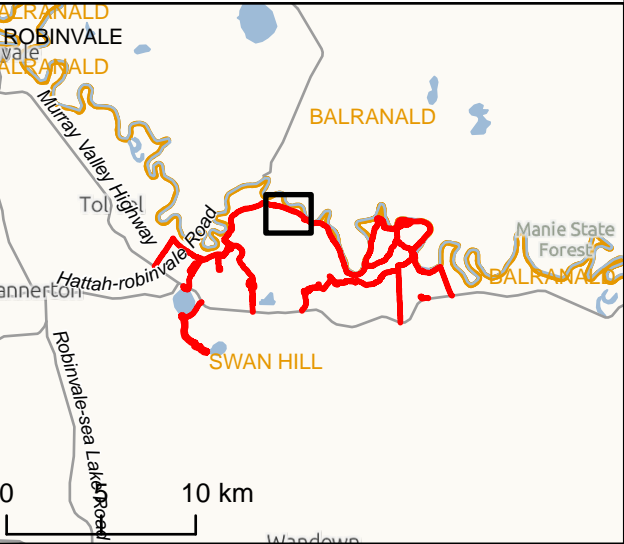
0 100 200

Metres

IS297792

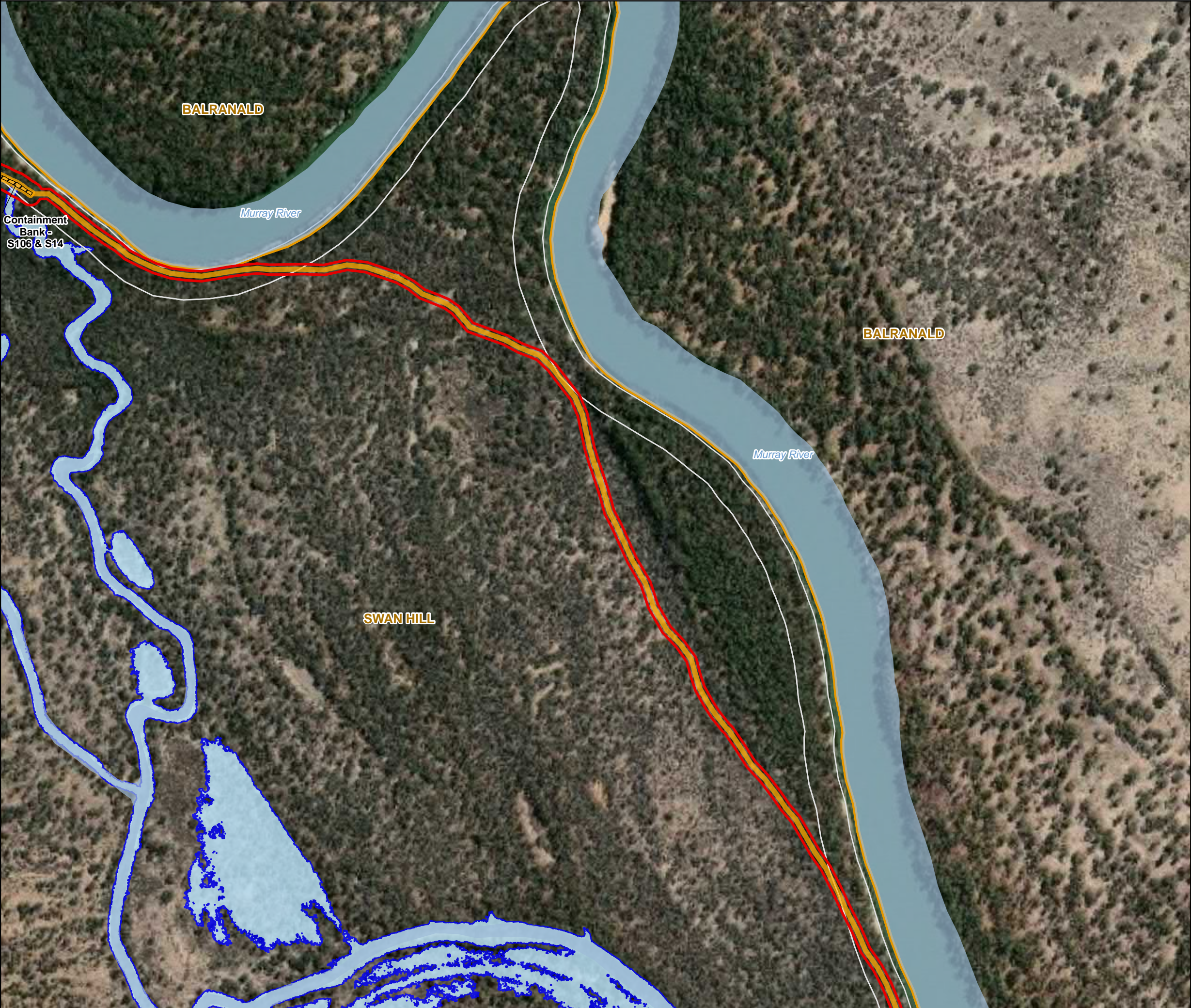
DATA SOURCES
© Commonwealth of Australia (Geoscience Australia) 2006 Geodata Topo 250k Series 3; Vicmap Data © State of Victoria 2019; Jacobs & GHD 2019 - 20.

COPYRIGHT: The concepts and information contained in this document are the copyright of Jacobs. Use or copying of the document in whole or in part without the written permission of Jacobs constitutes an infringement of copyright. Jacobs does not warrant that this document is definitive nor free of error and does not accept liability for any loss caused or arising from reliance upon information provided herein.



 R8

Resilient. Sustainable. Forward. Human. Regional. Performance. An integrated system.



Legend

- Development Footprint
- Area of Investigation
- Construction Footprint
- Inundation Area
- Waterbody
- Cadastre
- Local Government Areas

±

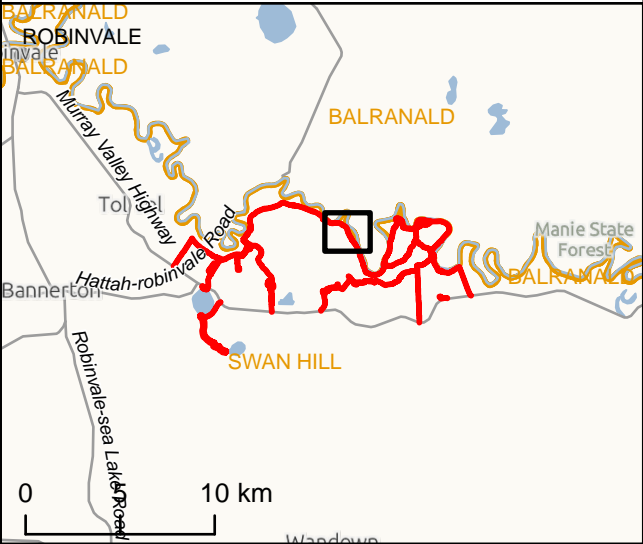
0 100 200

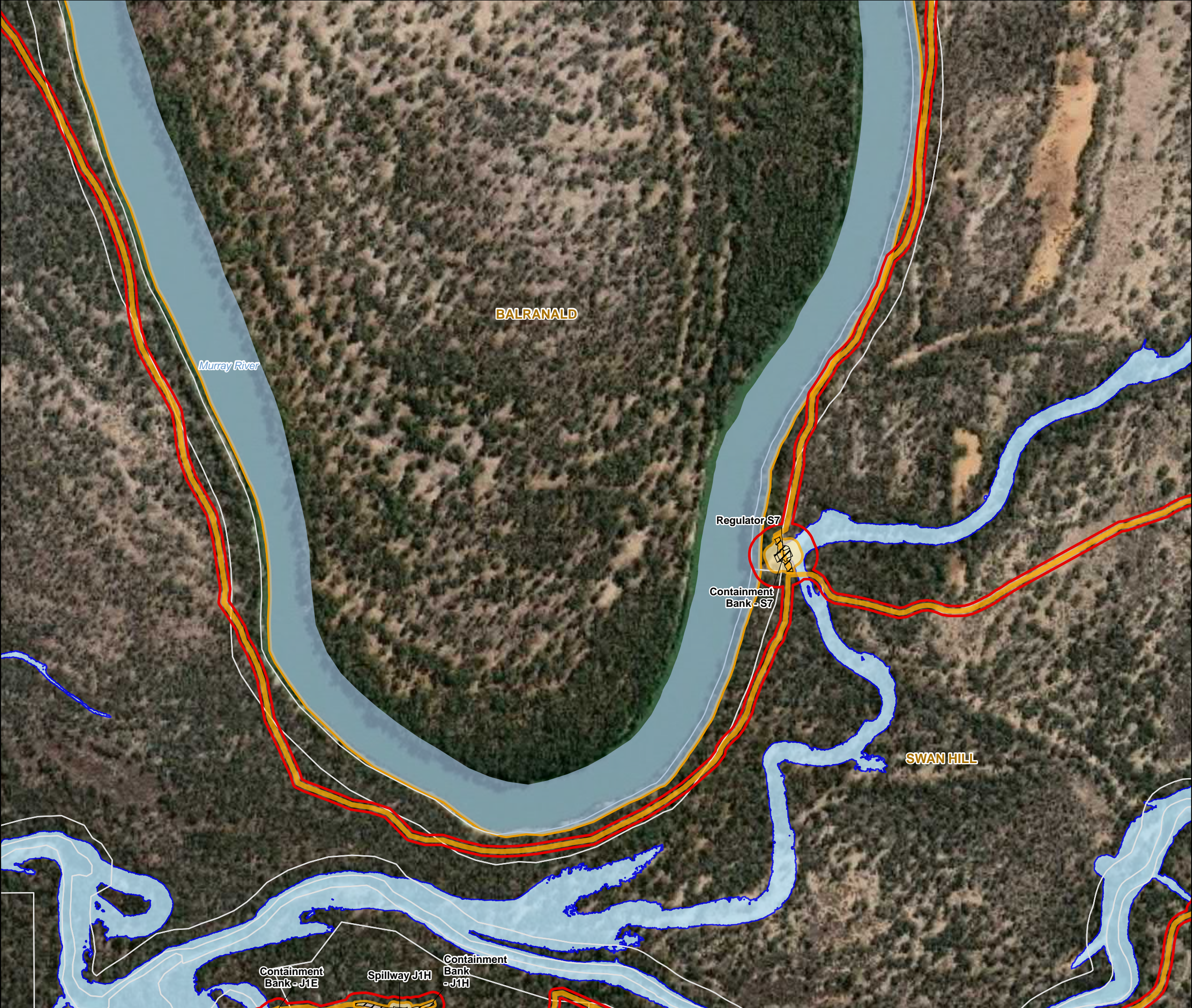
Metres

IS297792

DATA SOURCES
© Commonwealth of Australia (Geoscience Australia) 2006 Geodata Topo 250k Series 3; Vicmap Data © State of Victoria 2019; Jacobs & GHD 2019 - 20.

COPYRIGHT: The concepts and information contained in this document are the copyright of Jacobs. Use or copying of the document in whole or in part without the written permission of Jacobs constitutes an infringement of copyright. Jacobs does not warrant that this document is definitive nor free of error and does not accept liability for any loss caused or arising from reliance upon information provided herein.





Legend

- Development Footprint
- Area of Investigation
- Construction Footprint
- Inundation Area
- Waterbody
- Cadastre
- Local Government Areas

±

0 100 200
Metres

IS297792

DATA SOURCES
© Commonwealth of Australia (Geoscience Australia) 2006 Geodata Topo 250k Series 3; Vicmap Data © State of Victoria 2019; Jacobs & GHD 2019 - 20.

COPYRIGHT: The concepts and information contained in this document are the copyright of Jacobs. Use or copying of the document in whole or in part without the written permission of Jacobs constitutes an infringement of copyright. Jacobs does not warrant that this document is definitive nor free of error and does not accept liability for any loss caused or arising from reliance upon information provided herein.

