

Character Area 2.15

Upland Interface

2.15 UPLAND INTERFACE

Character Area 2.15 is an interface area that creates a union between the forested peaks of the southern Pyrenees and the flat Victorian Volcanic Plain. The western section of the area knits together the Grampians, Goldfields, Uplands and the Western Volcanic Plain Character Types.

The Upland Interface Character Area features plain, agricultural fields with rounded undulations that rise up to form low ranges, such as the Black Range to the west of Ararat, and the rounded ridgeline south of Mount Langi Ghiran, which is dominated by the Challicum Hills Wind Farm.

The area is typified by a cleared rolling pastoral landscape with remnant vegetation strewn throughout paddocks and along creek lines.

Key Features

- Cleared rolling pastoral land
- Remnant vegetation
- Backdrop of forested ranges
- Challicum Hills Wind Farm

Settlements

- Moyston



Open paddocks allow views to the upland silhouette across fields containing scattered paddock trees and agricultural elements such as occasional structures and small dams, sometimes with exotic vegetation



Rolling paddocks with remnant vegetation along creeklines

Figure 1 Upland Interface Overview

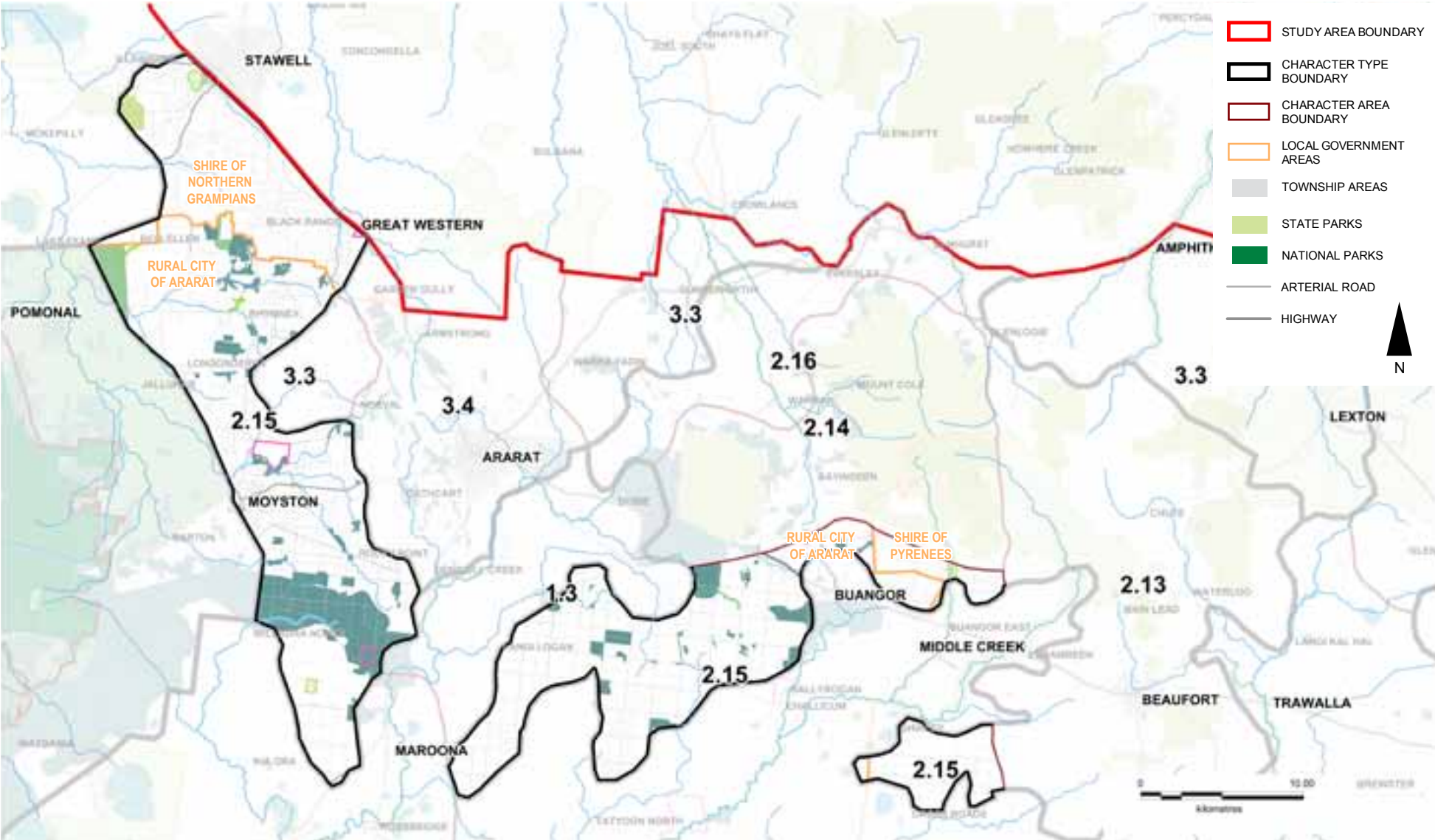


Figure 2 Upland Interface Landform & Waterform

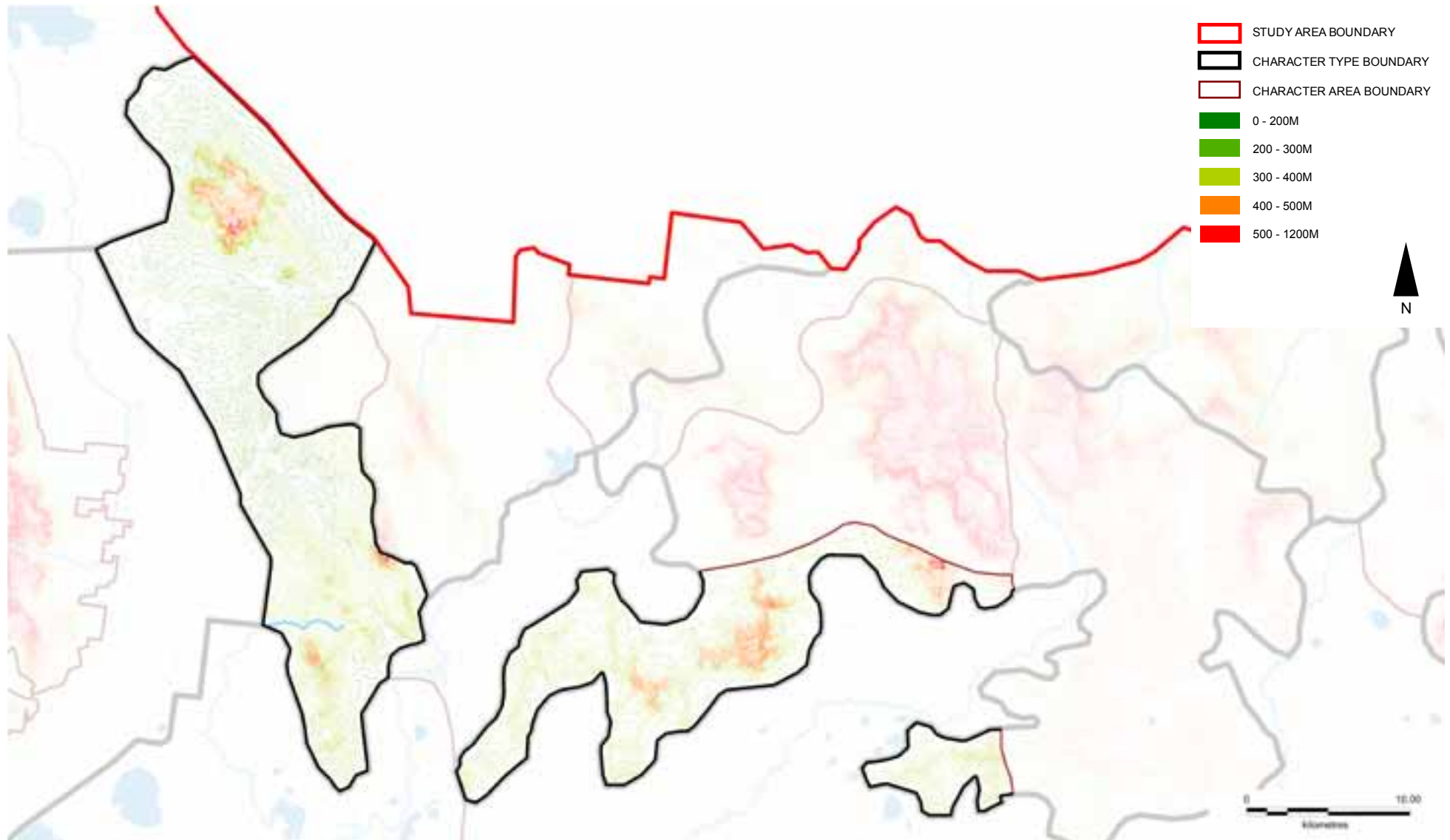
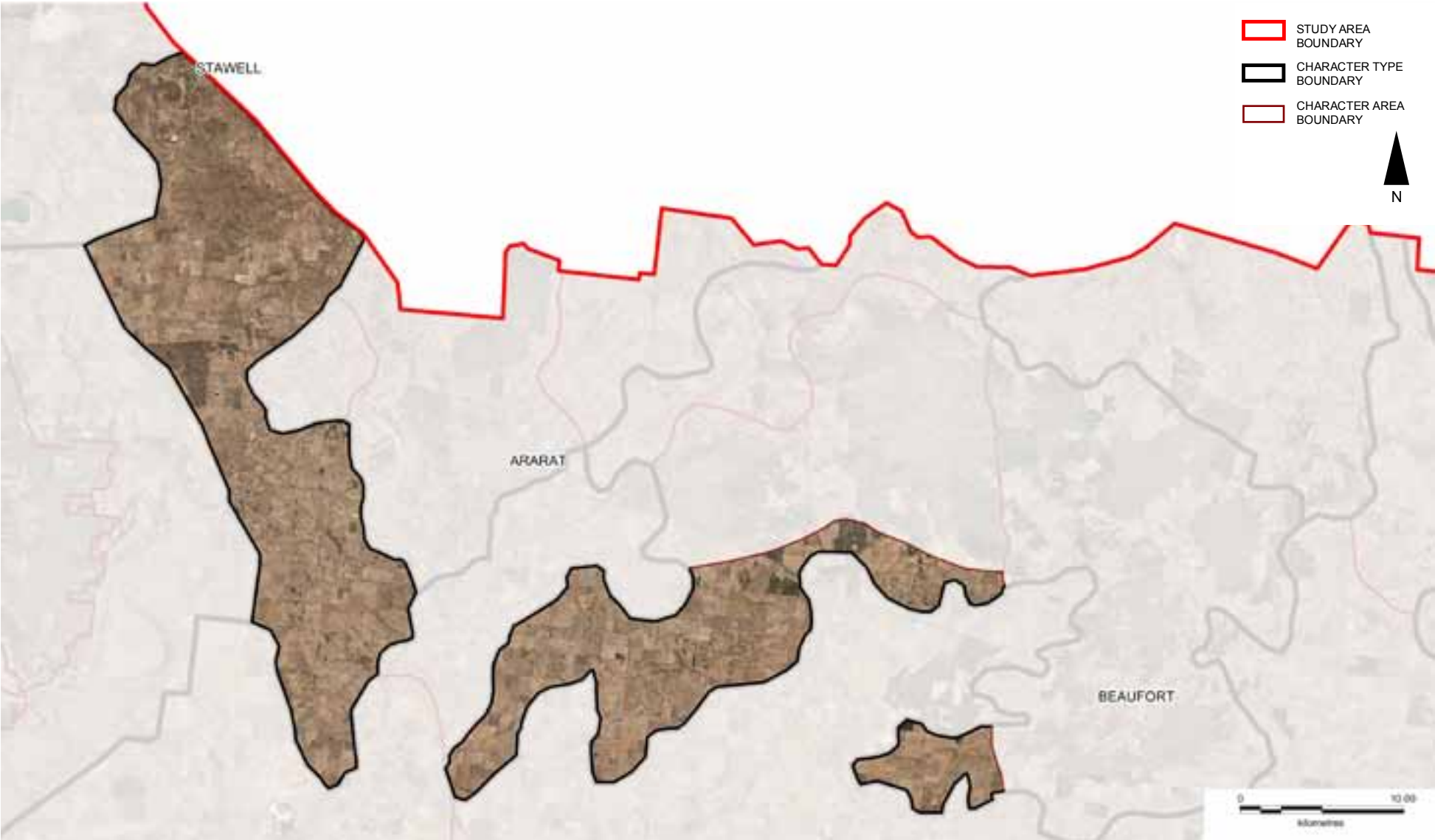


Figure 3 Upland Interface Aerial



PATTERN OF VIEWING

The main viewing corridors for this Character Area are:

- Ararat - Halls Gap Rd
- Geelong Rd
- Eurambeen - Streatham Rd
- Moyston - Great Western Rd
- Wallaces Rd
- Andrews Lane

Viewing corridors cut sporadically through this Character Area offering brief glimpses of undulating to hilly agricultural paddocks through roadside vegetation.

Towards the west of this Character Area views are available towards the Grampians, the jagged peaks silhouetted against the horizon.

The Boroka Lookout in the Grampians offers spectacular panoramic views over the western part of Character Area 2.15.

While the Challicum Hills Wind Farm is not publicly accessible, there are a couple of pullover points provided on the side of the road for photo opportunities.



Native roadside vegetation



Looking west from Geelong Road: Challicum Hills Wind Farm is visible, with Mount Langi Ghiran in the background



Andrews Lane looking west across the hilly cleared landscape



View towards the Black Range over Red Gum Paddocks on Wallace's Road



Looking east from the Boroka lookout in the Grampians. The Uplands Interface Character Area is visible in the midground.

LANDSCAPE VALUES

Historic

- Bunjil's rockshelter, Black Range, identified in Gib Wettenhall's *The People of the Gariwerd* (1999)
 - only aboriginal rock art site containing figures painted in more than one colour
 - depicts Bunjil an aboriginal ancestral hero
- Locally significant water race, Black Range, recommended for HO
 - believed to be constructed by Chinese to channel water from a spring to their market gardens

Environmental/Scientific

- Significant vegetation, protected by Ararat VPO, including scattered Red Gums, an important habitat & links
- Kings Forest Natural Features Reserve, a protected area on the IUCN list, Category IV (Habitat/Species Management Area)

Social

- Ferntree & Cascade Falls, Mount Buangor State Park, tourist attractions
- The Gap Winery, part of the Grampians winery region, tourist attraction

LANDSCAPE PROTECTION & MANAGEMENT

Planning Scheme Policies & Controls

This Character Area is subject to the Ararat, Pyrenees and Northern Grampians Planning Schemes.

Key Clauses

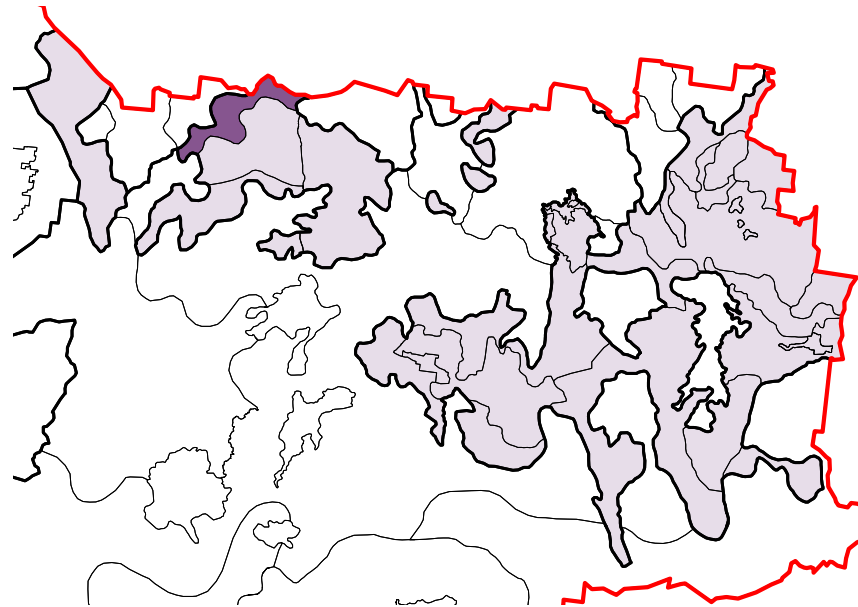
- Ararat Clause 21.04-4 Rural Landscape

Key Zones

- FZ
- PCRZ
- RLZ at Black Range, Great Western, Moyston, Illawarra & Stawell

Key Overlays

- Ararat SLO1: Grampians Surrounds & Black Range
- Ararat ESO2: Watercourses, Waterbody & Wetland Protection Areas
- Ararat ESO3: Habitat Protection Areas
- Northern Grampians ESO3: Stawell Wastewater Treatment Plant Buffer Area
- Ararat HO119: Lexington Homestead
- Ararat HO129: “Burrumbeep”
- Northern Grampians HO1: Seppelts Champagne Cellars
- Ararat VPO1: Significant & Remnant Vegetation Areas
- Ararat VPO2: Roadside Vegetation Protection Areas
- WMO / BMO
- Northern Grampians LSIO
- Pyrenees RO26: Former Shirley Crown Township
- Northern Grampians AEO



Character Area 2.16

Mount Cole Creek

2.16 MOUNT COLE CREEK

Character Area 2.16 lies to the north of Mount Cole and Mount Langi Ghiran. The area is mostly cleared with mature Red Gums strewn across paddocks. Native vegetation lining the roadsides and creek corridors highlights these linear features.

The mountainous rises, blanketed in vegetation, form a constant backdrop to the south of this Character Area.

This area is mostly used for agriculture; with farming infrastructure visible within paddocks. Built form is sited adjacent to roadsides and is often screened by vegetation.

This Character Area becomes more rugged and hilly as it meets the Pyrenees Ranges and the Goldfields Landscape to the north.

Key Features

- Red Gums and other remnant paddock trees
- Native vegetation along creeklines and roadsides
- Views towards tree covered mountainous rises
- Mount Cole Creek

Settlements

- Elmhurst
- Warrack



Mount Cole creates a distinctive backdrop over open paddocks containing remnant vegetation and farming infrastructure



Cleared paddocks with native vegetation lining the roadside and Mount Cole Creek

Figure 1 Mount Cole Creek Overview

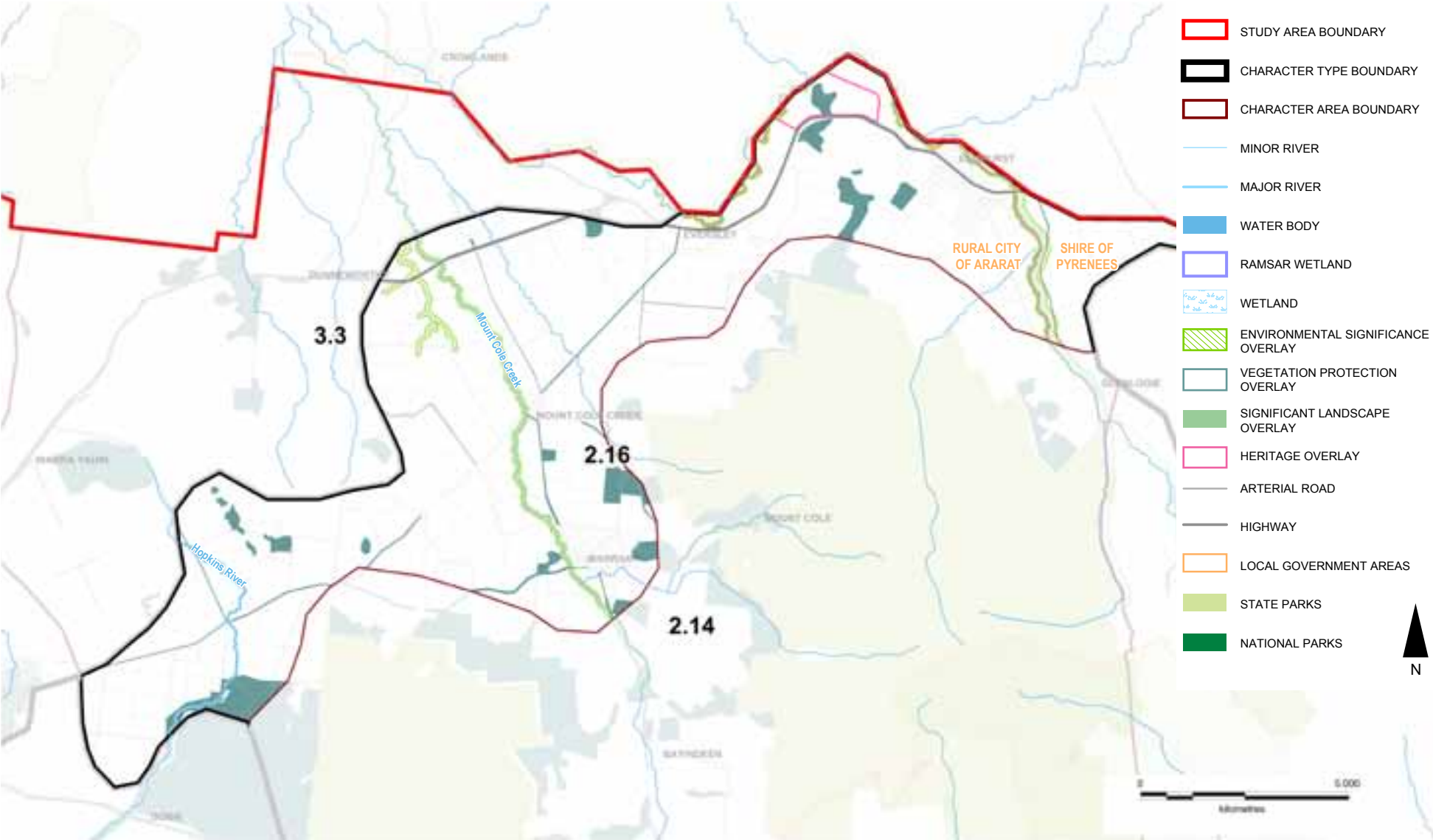


Figure 2 Mount Cole Creek Landform

Figure 3 Mount Cole Creek Aerial



PATTERN OF VIEWING

The main viewing corridors for this Character Area are:

- Pyrenees Highway
- Eversley Road
- Warrak Road
- Buangor - Ben Nevis Road
- Hopkins River Road
- Down Road
- Big Hill Road

Views from the majority of the viewing corridors are screened or filtered by native roadside vegetation.

To the south of the area Mount Cole and Langi Ghiran create a silhouetted backdrop to the undulating paddocks.

Big Hill Road, a minor route, offers fantastic panoramic views over this, and adjacent Character Areas.



Views towards Mount Cole from Eversley Road



Plantation views on the Buangor - Ben Nevis Road



River Red Gums as viewed from Eversley Road



Panoramic views from Big Hill Road over the Mount Cole Creek and adjacent Central Goldfields (3.3) Character Areas



Looking north from Down Road over cleared undulating paddocks towards the Great Dividing Range, native vegetation lines the roadside

LANDSCAPE VALUES

Environmental/Scientific

- Locally significant watercourses, waterbodies & wetlands, protected by ESO2
- Locally significant vegetation, protected by Ararat VPO1 & VPO2, including:
 - scattered red gums, an important habitat & links
 - riparian habitat, important links and endangered EVCs (Creekline Grassy) at Hopkins River North Streamside Reserve, Dobie

LANDSCAPE PROTECTION & MANAGEMENT

Planning Scheme Policies & Controls

This Character Area is subject to the Ararat and Pyrenees Planning Schemes.

Key Zones

- FZ
- RCZ (Pyrenees only)

Key Overlays

- Ararat ESO2: Watercourses, Waterbody & Wetland Protection Areas
- Ararat HO135: Decameron buildings
- Ararat VPO1: Significant & Remnant Vegetation Areas
- Ararat VPO2: Roadside Vegetation Protection Areas
- Pyrenees DDO1: Potentially Flood-Prone Areas
- Ararat WMO / BMO
- Pyrenees DDO1: Potentially Flood-Prone Areas

