



Figure 1

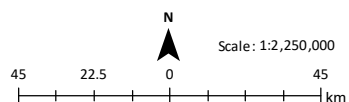
Marinus Link overview

Legend

- Landfall
- Potential converter station
- Limit of State Coastal Waters (3nm)

Proposed route

-  Subsea cable
 Underground HVDC cable



Coordinate System: GDA 1994 MGA Zone 55
Projection: Transverse Mercator
Datum: GDA 1994

TasNetworks has made every effort to ensure this product is free of errors but does not warrant the map or its features are either spatially or temporally accurate or fit for a particular use.

TasNetworks provides this map without any warranty of any kind whatsoever, either express or implied.

© TasNetworks 2021

Date: 26/08/2021 9:33:47 AM
Prepared by: Helen Unkovich

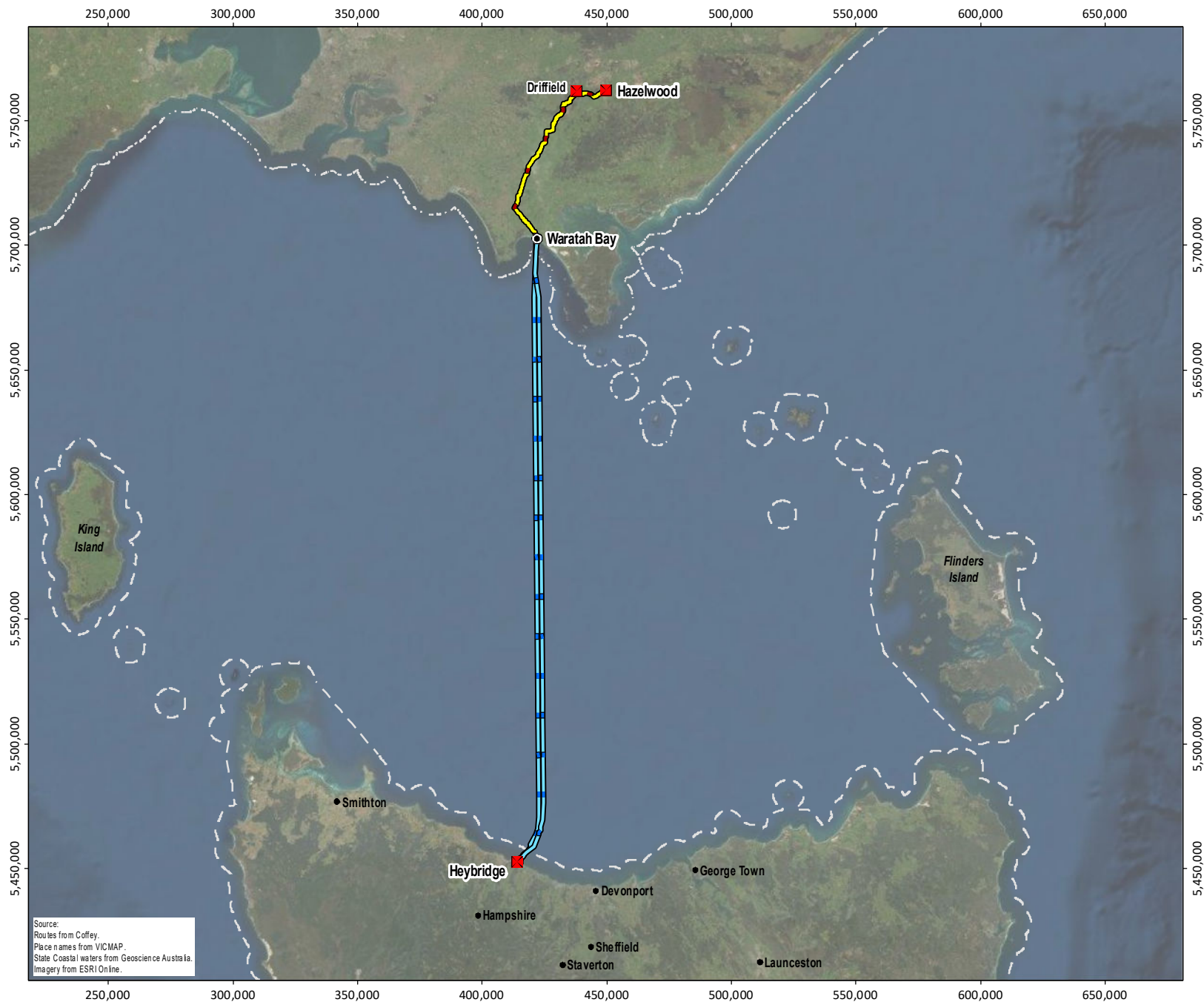
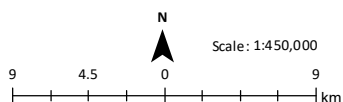
The logo for Project Marinus. It features the word "PROJECT" in a dark blue, sans-serif font. To its right is a graphic element consisting of several parallel, slanted lines in a lighter blue color. Below "PROJECT" and the graphic is the word "MARINUS" in a large, bold, dark blue, sans-serif font.

Figure 2
Referral area

Legend

- Landfall
- Potential converter station
- Limit of State Coastal Waters (3nm)
- Proposed route
 - Subsea cable
 - Underground HVDC cable



Coordinate System: GDA 1994 MGA Zone 55
Projection: Transverse Mercator
Datum: GDA 1994

TasNetworks has made every effort to ensure this product is free of errors but does not warrant the map or its features are either spatially or temporally accurate or fit for a particular use.

TasNetworks provides this map without any warranty of any kind whatsoever, either express or implied.

© TasNetworks 2021

Date: 26/08/2021 12:26:47 PM
Prepared by: Helen Unkovich



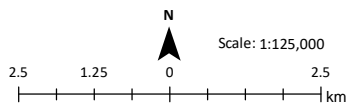
PROJECT **MARINUS**



Figure 3.1
Planning overlays

Legend

- Landfall
- Proposed route
- Subsea cable
- Underground HVDC cable



Coordinate System: GDA 1994 MGA Zone 55
Projection: Transverse Mercator
Datum: GDA 1994

TasNetworks has made every effort to ensure this product is free of errors but does not warrant the map or its features are either spatially or temporally accurate or fit for a particular use.

TasNetworks provides this map without any warranty of any kind whatsoever, either express or implied.

© TasNetworks 2021

Date: 23/06/2021 5:22:03 PM
Prepared by: Helen Unkovich



PROJECT **MARINUS**

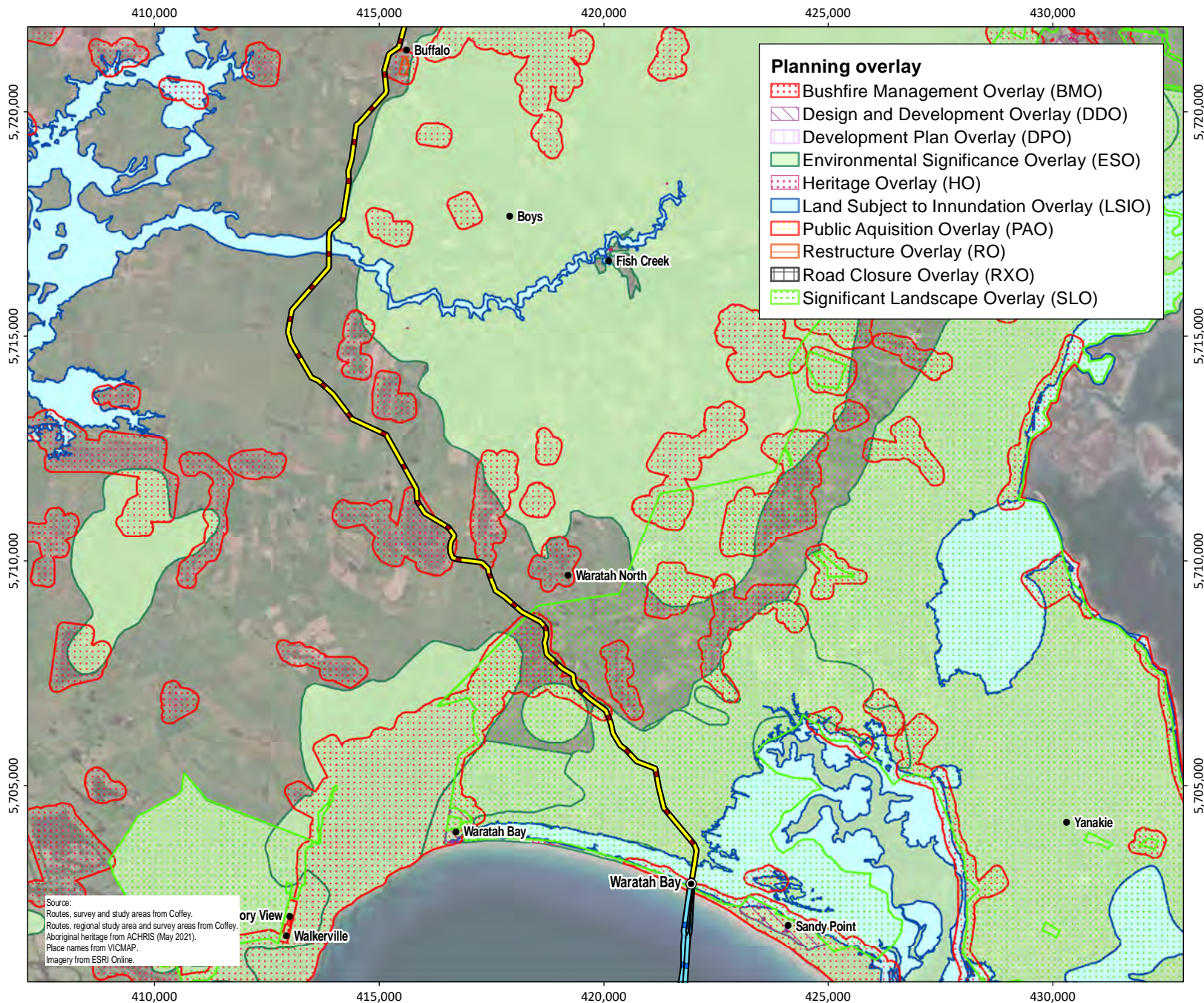
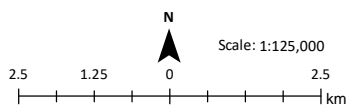


Figure 3.2
Planning overlays

Legend

Proposed route

Underground HVDC cable



Coordinate System: GDA 1994 MGA Zone 55
Projection: Transverse Mercator
Datum: GDA 1994

TasNetworks has made every effort to ensure this product is free of errors but does not warrant the map or its features are either spatially or temporally accurate or fit for a particular use.

TasNetworks provides this map without any warranty of any kind whatsoever, either express or implied.

© TasNetworks 2021

Date: 23/06/2021 5:22:03 PM
Prepared by: Helen Unkovich



PROJECT **MARINUS**

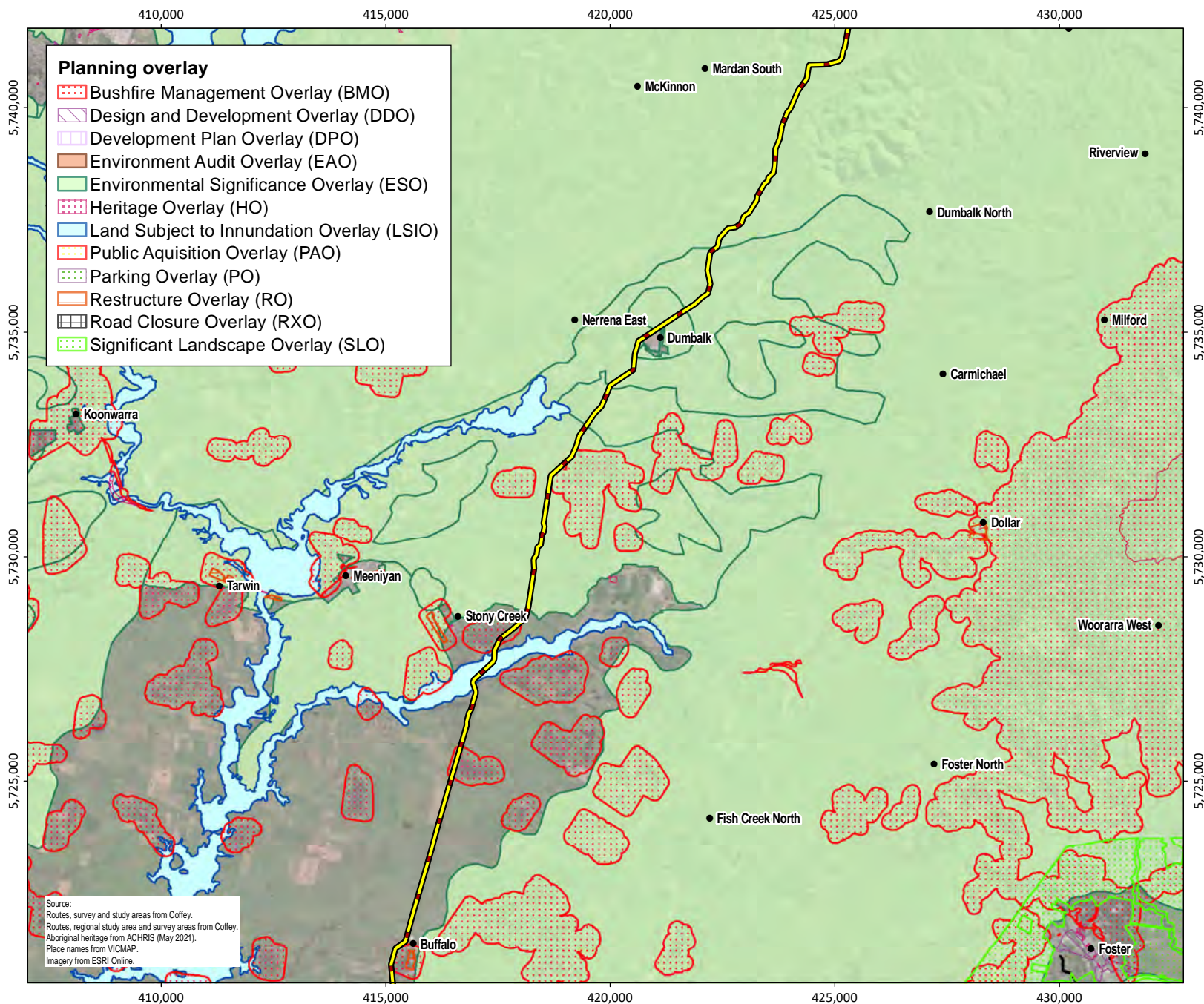
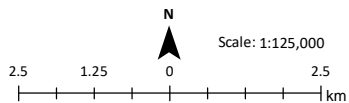


Figure 3.3
Planning overlays

Legend

Proposed route

Underground HVDC cable



Coordinate System: GDA 1994 MGA Zone 55
Projection: Transverse Mercator
Datum: GDA 1994

TasNetworks has made every effort to ensure this product is free of errors but does not warrant the map or its features are either spatially or temporally accurate or fit for a particular use.

TasNetworks provides this map without any warranty of any kind whatsoever, either express or implied.

© TasNetworks 2021

Date: 23/06/2021 5:22:03 PM
Prepared by: Helen Unkovich



PROJECT
MARINUS

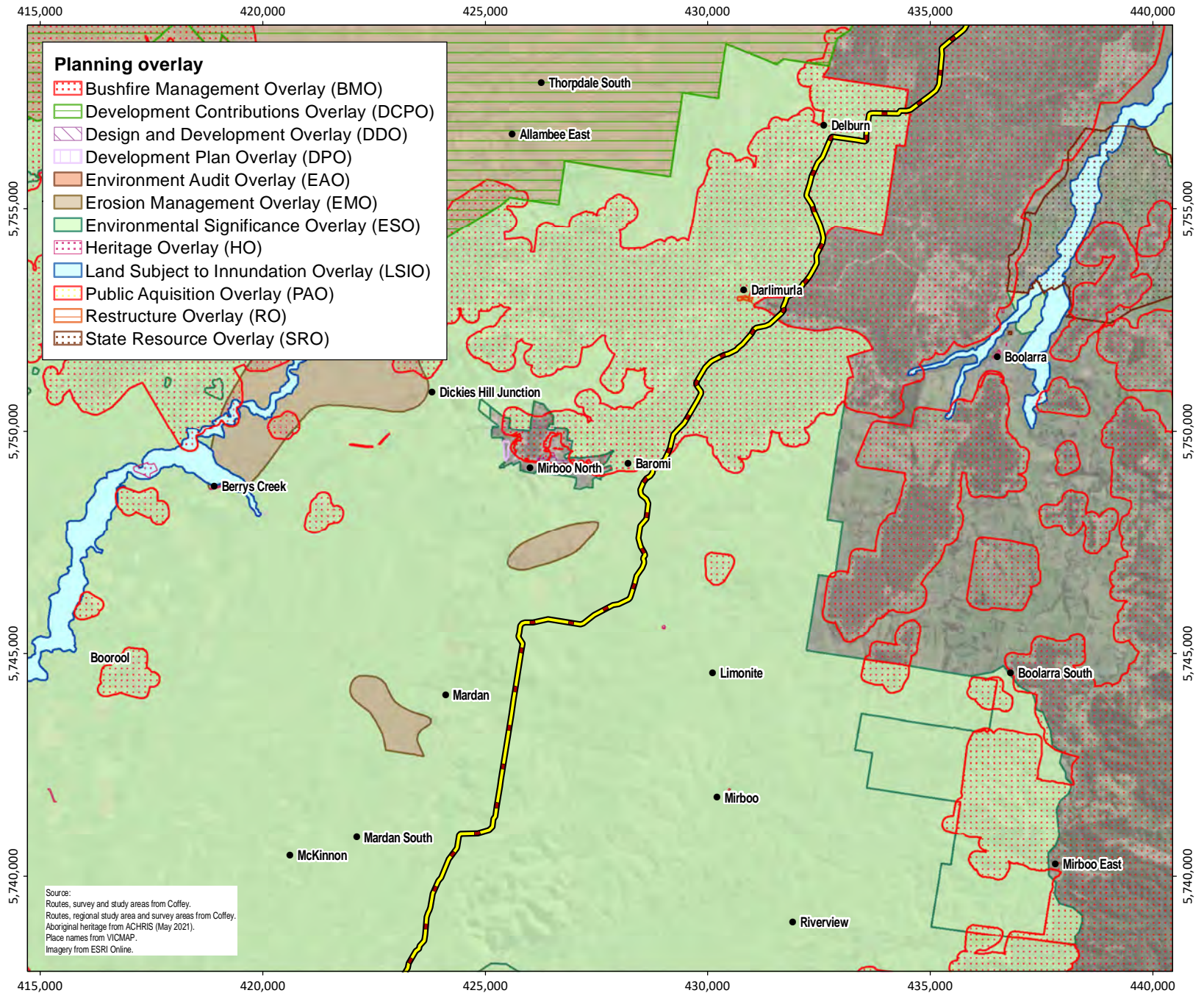
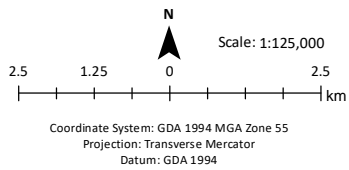


Figure 3.4
Planning overlays

Legend

- Potential converter station
- Proposed route
- Underground HVDC cable



TasNetworks has made every effort to ensure this product is free of errors but does not warrant the map or its features are either spatially or temporally accurate or fit for a particular use.

TasNetworks provides this map without any warranty of any kind whatsoever, either express or implied.

© TasNetworks 2021

Date: 23/06/2021 5:22:03 PM
Prepared by: Helen Unkovich



PROJECT **MARINUS**

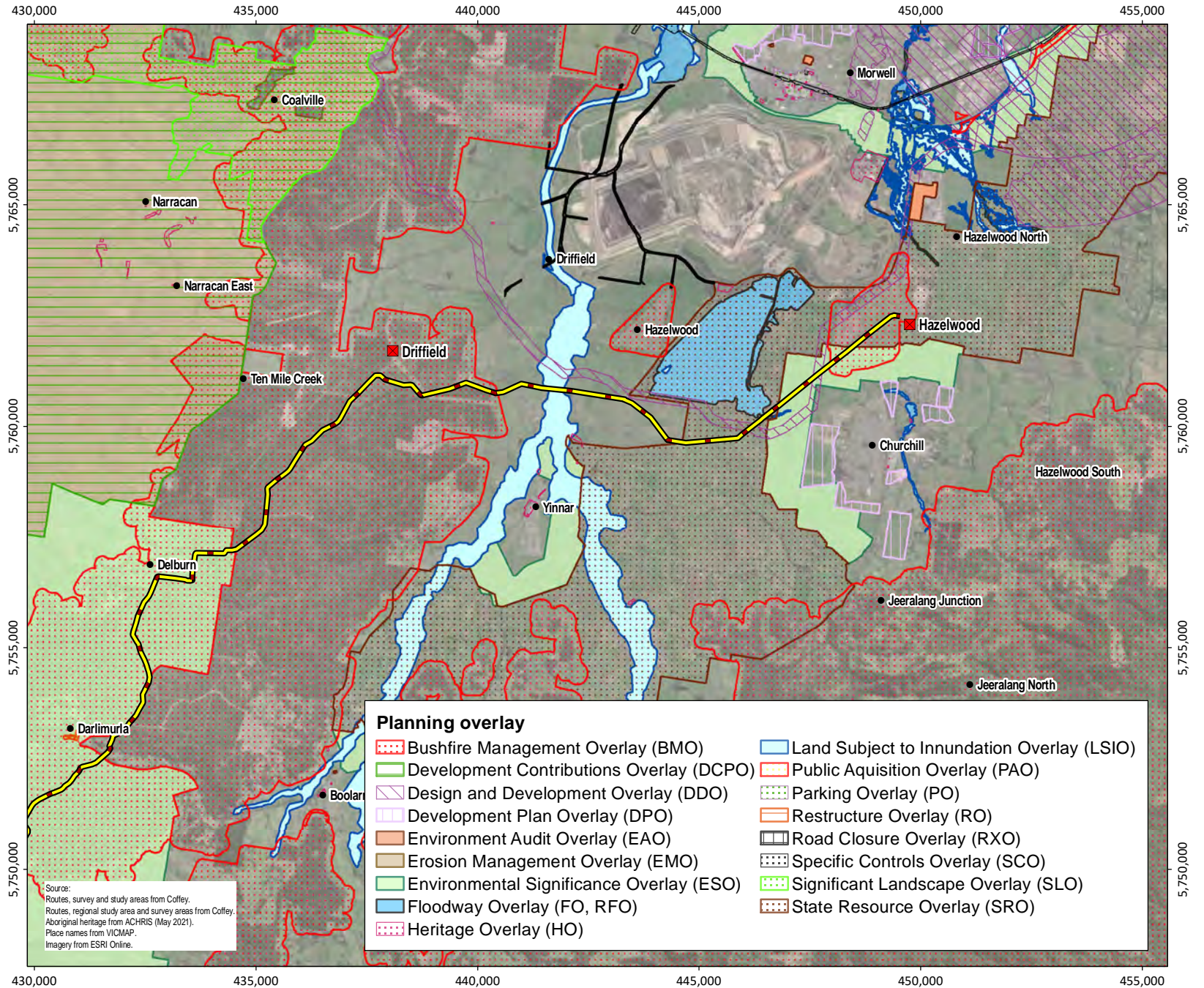
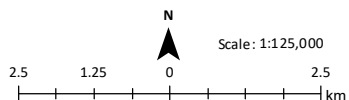


Figure 4.1
Planning zones

Legend

- Landfall
- Proposed route
 - Subsea cable
 - Underground HVDC cable
- Local government area boundaries



Coordinate System: GDA 1994 MGA Zone 55
Projection: Transverse Mercator
Datum: GDA 1994

TasNetworks has made every effort to ensure this product is free of errors but does not warrant the map or its features are either spatially or temporally accurate or fit for a particular use.

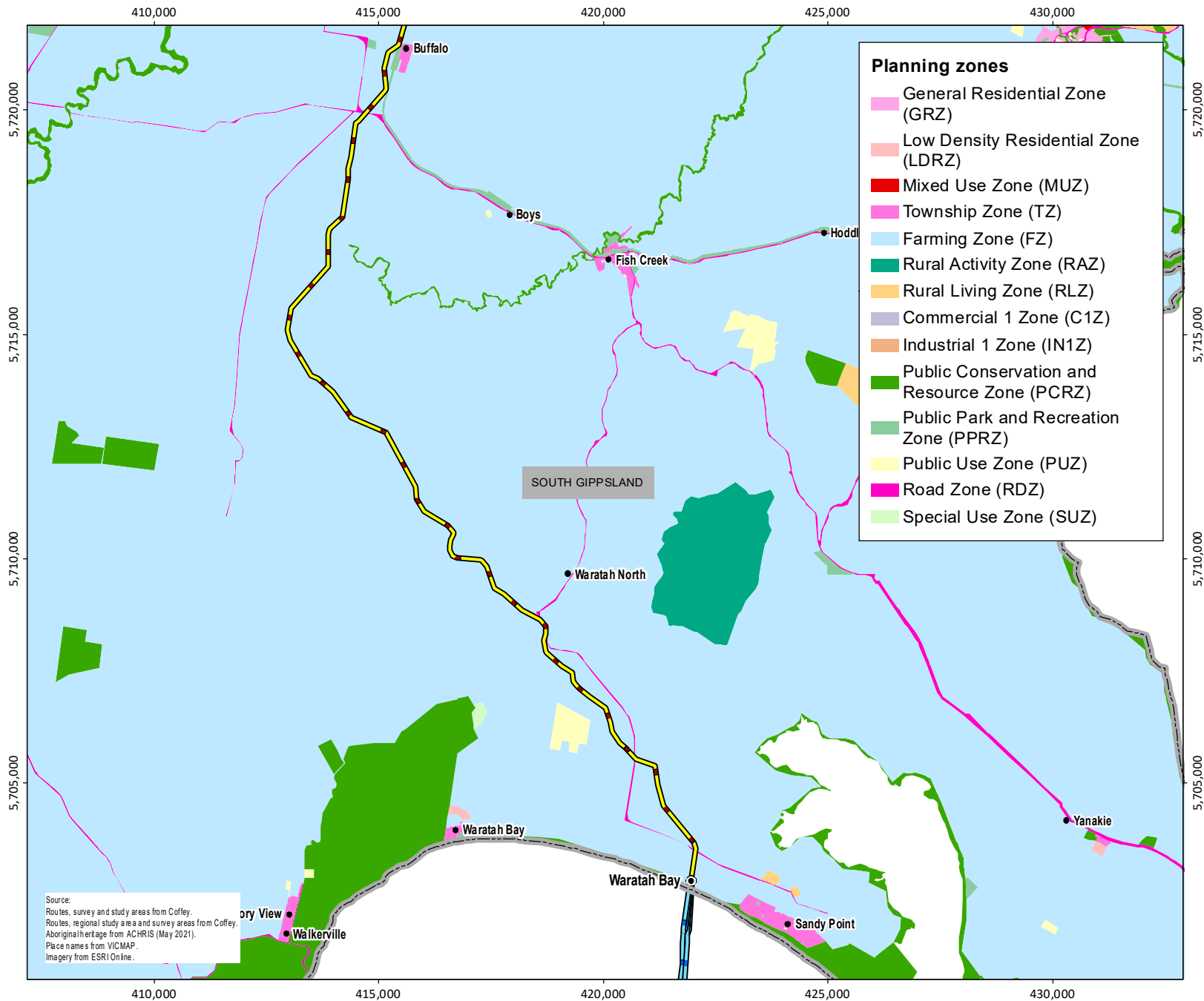
TasNetworks provides this map without any warranty of any kind whatsoever, either express or implied.

© TasNetworks 2021

6/08/2021 11:34:55 AM
ed by: Helen Unkovich



PROJECT **MARINUS**



Source:
Routes, survey and study areas from Coffey.
Routes, regional study area and survey areas from Coffey.
Aboriginal heritage from ACHRIS (May 2021).
Place names from VICMAP.
Imagery from ESRI Online.

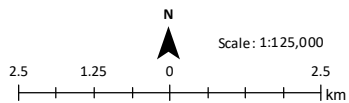
Figure 4.2
Planning zones

Legend

Proposed route

Underground HVDC cable

Local government area boundaries



Coordinate System: GDA 1994 MGA Zone 55
Projection: Transverse Mercator
Datum: GDA 1994

TasNetworks has made every effort to ensure this product is free of errors but does not warrant the map or its features are either spatially or temporally accurate or fit for a particular use.

TasNetworks provides this map without any warranty of any kind whatsoever, either express or implied.

© TasNetworks 2021

6/08/2021 11:41:27 AM
ed by: Helen Unkovich



PROJECT
MARINUS

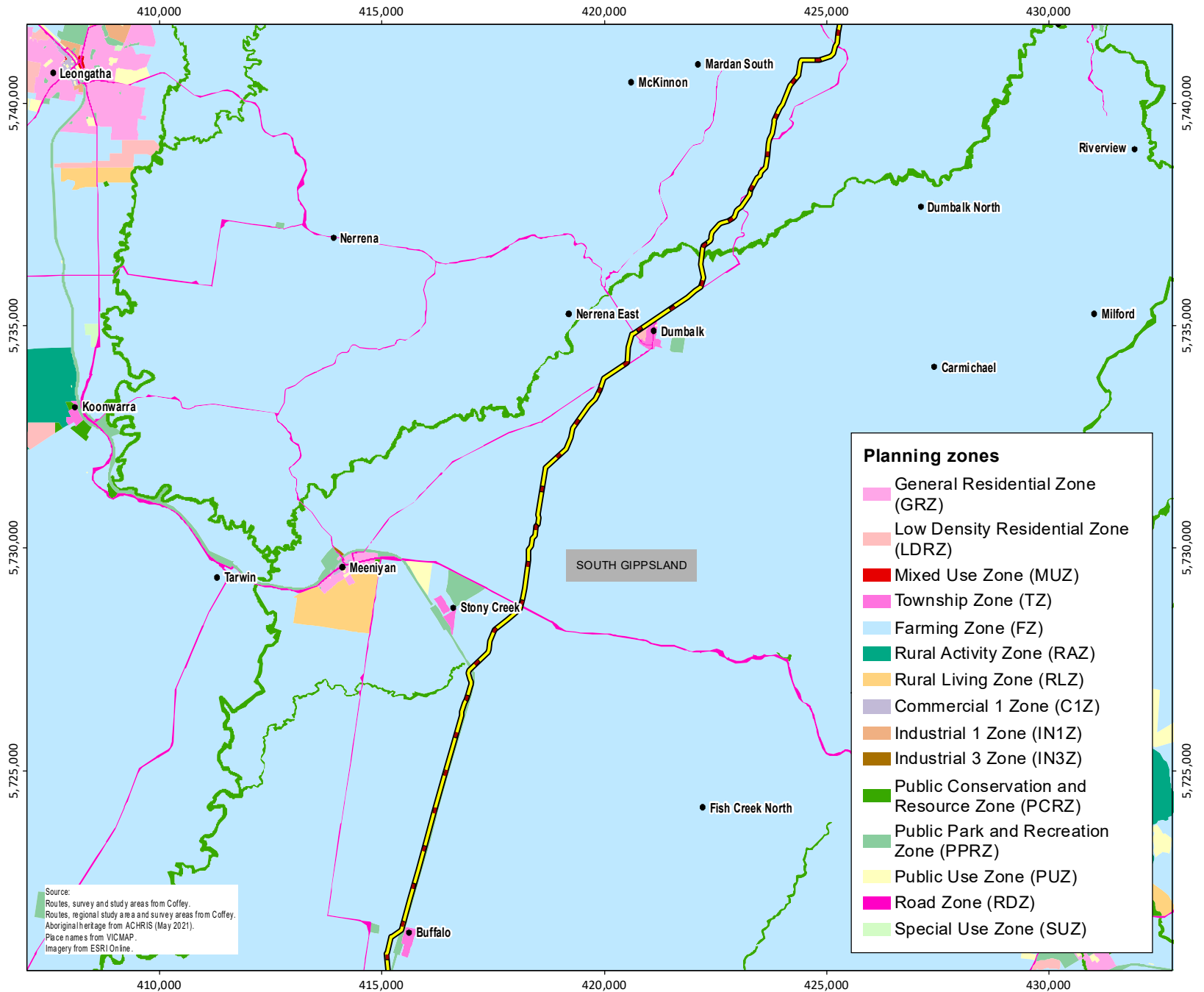


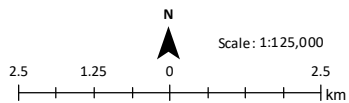
Figure 4.3
Planning zones

Legend

Proposed route

Underground HVDC cable

Local government area boundaries



Coordinate System: GDA 1994 MGA Zone 55
Projection: Transverse Mercator
Datum: GDA 1994

TasNetworks has made every effort to ensure this product is free of errors but does not warrant the map or its features are either spatially or temporally accurate or fit for a particular use.

TasNetworks provides this map without any warranty of any kind whatsoever, either express or implied.

© TasNetworks 2021

6/08/2021 11:43:57 AM
ed by: Helen Unkovich



PROJECT **MARINUS**

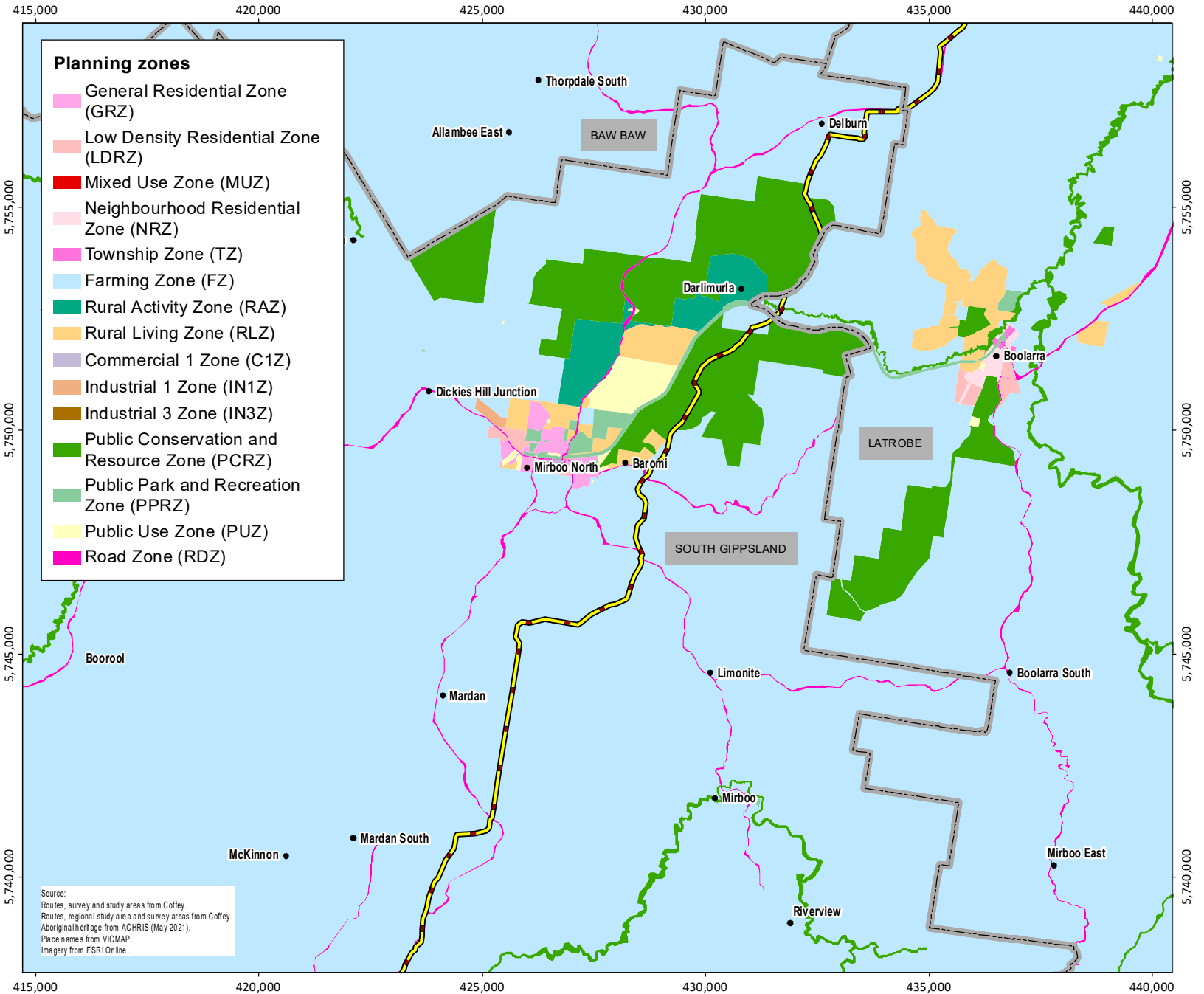
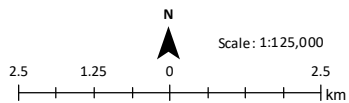


Figure 4.4
Planning zones

Legend

- Potential converter station
- Proposed route
- Underground HVDC cable
- ▭ Local government area boundaries



Coordinate System: GDA 1994 MGA Zone 55
Projection: Transverse Mercator
Datum: GDA 1994

TasNetworks has made every effort to ensure this product is free of errors but does not warrant the map or its features are either spatially or temporally accurate or fit for a particular use.

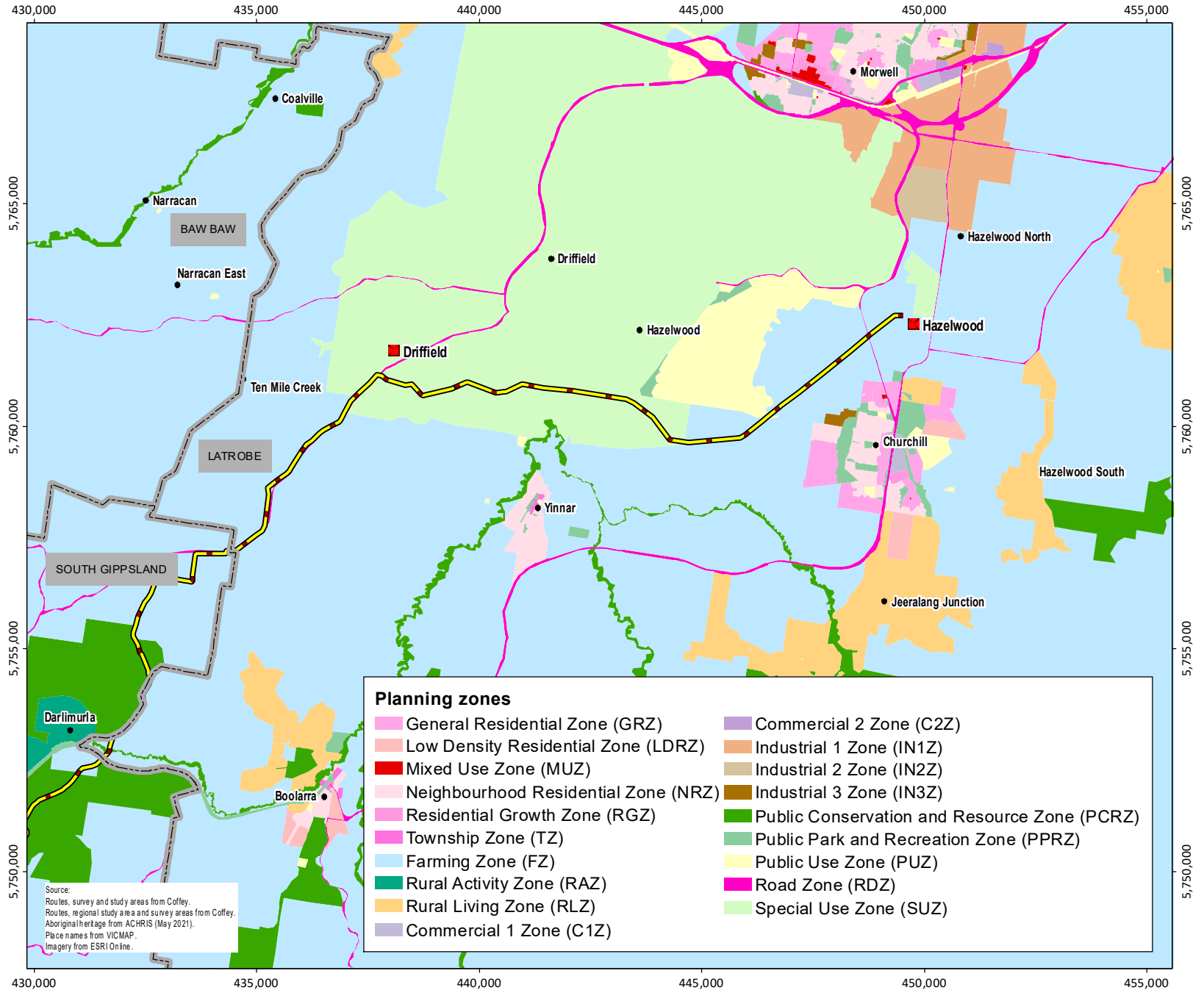
TasNetworks provides this map without any warranty of any kind whatsoever, either express or implied.

© TasNetworks 2021

6/08/2021 11:47:07 AM
ed by: Helen Unkovich



PROJECT **MARINUS**

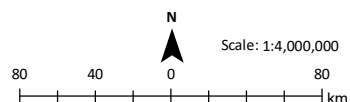


Document Path: \\ETS572GIS551\data\$\\GIS\\215878_MELEN_TasNetworks_Project\\Marinus\\GIS\\VWD\\215878\\ML_804_GIS011_v0.mxd

Figure 5 Bass Strait fisheries

Legend

- Moderate effort Scallop beds (1994-1998)
- Limit of state coastal waters
- Scallop fishery (other data)
- 'Historic' Scallop beds
- Scallop fishery effort (1999-2017)
 - Scallops - High effort
 - Scallops - Medium effort
 - Scallops - Low effort
- Shark gillnetting effort (1999-2017)
 - High effort
 - Medium effort
- Commonwealth scallop fishery area



Coordinate System: GDA 1994 MGA Zone 55
Projection: Transverse Mercator
Datum: GDA 1994

TasNetworks has made every effort to ensure this product is free of errors but does not warrant the map or its features are either spatially or temporally accurate or fit for a particular use.

TasNetworks provides this map without any warranty of any kind whatsoever, either express or implied.

© TasNetworks 2021

Date: 23/06/2021 5:39:21 PM
Prepared by: Helen Unkovich



PROJECT
MARINUS

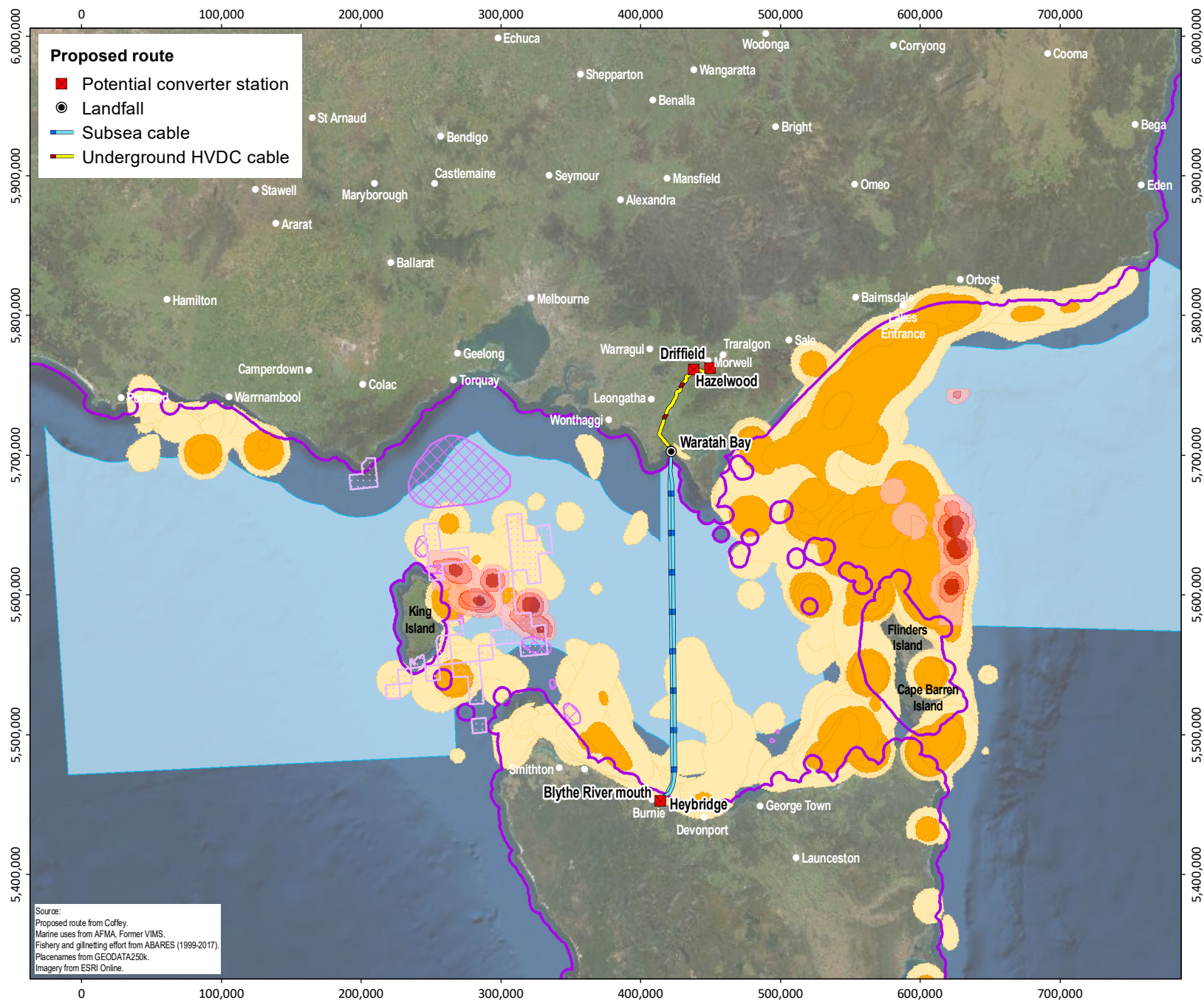
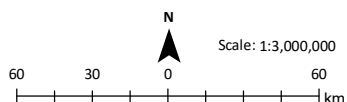


Figure 6
Bass Strait infrastructure

Legend

- Basslink Cable
- Active Telstra cable
- Indigo Central Cable
- Gas pipeline
- Petroleum production licence
- ★ Caution point
- Caution area
- Defence training area
- Bathymetry contour (m)



Coordinate System: GDA 1994 MGA Zone 55
Projection: Transverse Mercator
Datum: GDA 1994

TasNetworks has made every effort to ensure this product is free of errors but does not warrant the map or its features are either spatially or temporally accurate or fit for a particular use.

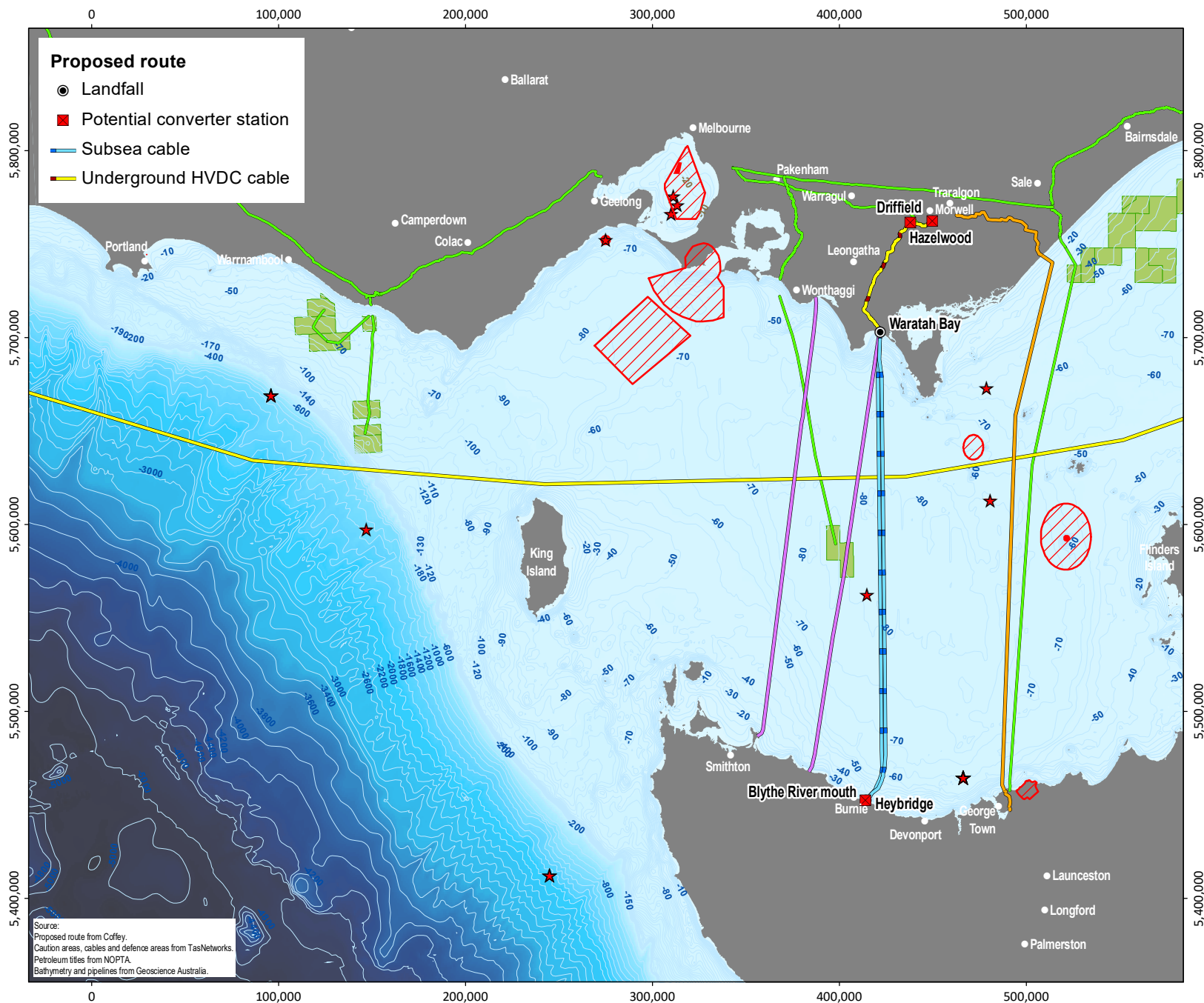
TasNetworks provides this map without any warranty of any kind whatsoever, either express or implied.

© TasNetworks 2021

Date: 23/06/2021 5:36:43 PM
Prepared by: Helen Unkovich



PROJECT
MARINUS

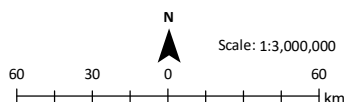


Source:
Proposed route from Coffey.
Caution areas, cables and defence areas from TasNetworks.
Petroleum titles from NOPATA.
Bathymetry and pipelines from Geoscience Australia.

Figure 8
Southern Victoria
vegetation cover and reserves

Legend

- Landfall
- Potential converter station
- Subsea cable
- Underground HVDC cable
- Marine Park
- Ramsar site
- National park



Coordinate System: GDA 1994 MGA Zone 55
 Projection: Transverse Mercator
 Datum: GDA 1994

TasNetworks has made every effort to ensure this product is free of errors but does not warrant the map or its features are either spatially or temporally accurate or fit for a particular use.

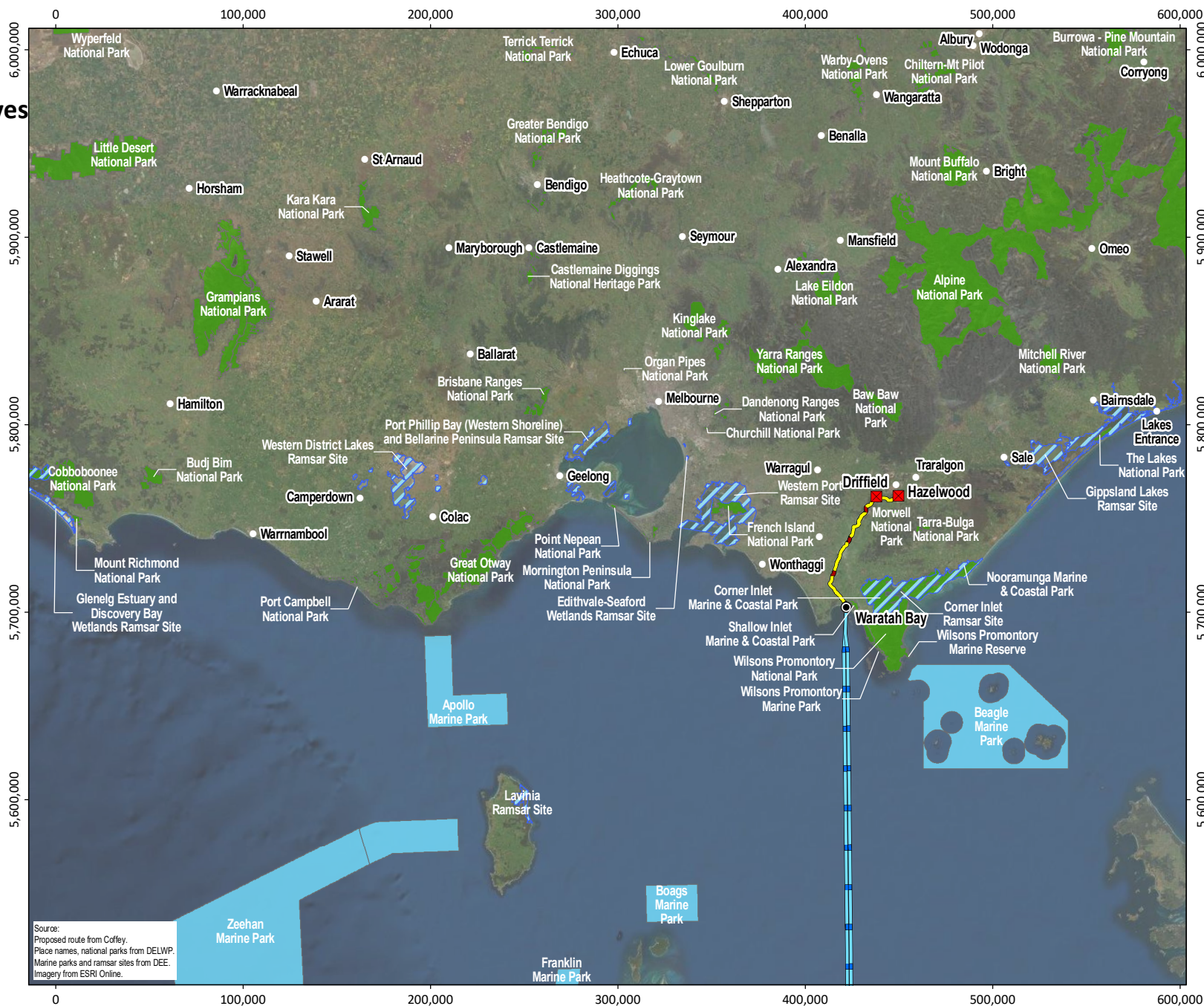
TasNetworks provides this map without any warranty of any kind whatsoever, either express or implied.

© TasNetworks 2021

Date: 23/06/2021 5:39:35 PM
 Prepared by: Helen Unkovich



PROJECT **MARINUS**



Document Path: \\ets772gifs1\data\GIS\215878_MIE\EN_TasNetworks_Project\Marinus\TasNetworks\Project\Marinus\RA\215878ML_R04_GIS007_v0.mxd.v3

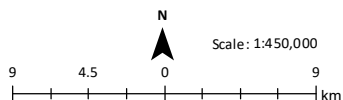
Figure 9 Registered Aboriginal Parties

Legend

- Landfall
- Potential converter station

Proposed route

- Subsea cable
- Underground HVDC cable
- Registered Aboriginal Party (RAP)



Coordinate System: GDA 1994 MGA Zone 55
Projection: Transverse Mercator
Datum: GDA 1994

TasNetworks has made every effort to ensure this product is free of errors but does not warrant the map or its features are either spatially or temporally accurate or fit for a particular use.

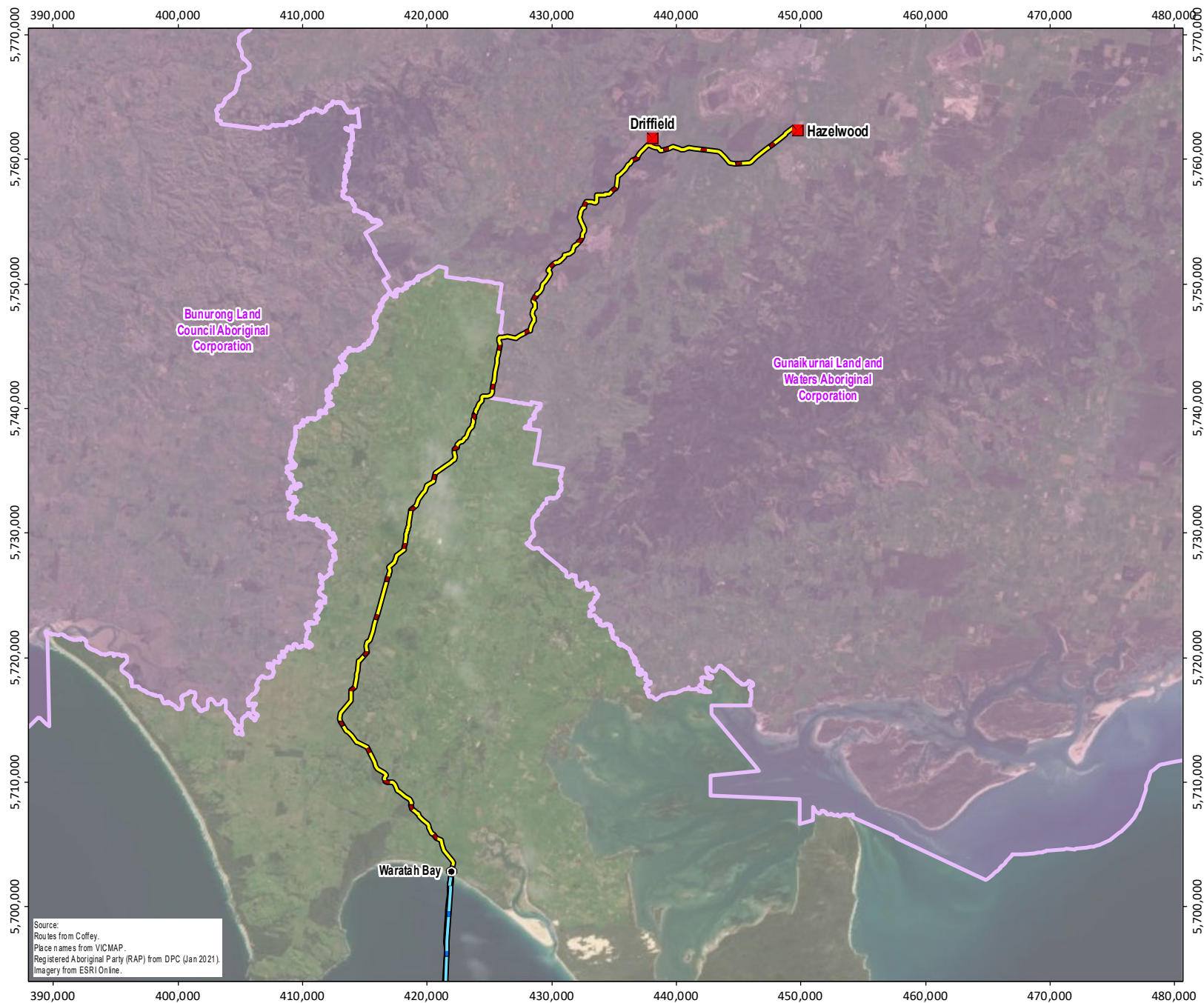
TasNetworks provides this map without any warranty of any kind whatsoever, either express or implied.

© TasNetworks 2021

Date: 26/08/2021 10:40:02 AM
Prepared by: Helen Unkovich



PROJECT
MARINUS

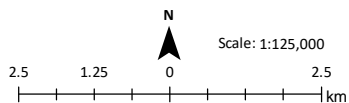


Source:
Routes from Coffey.
Place names from VICMAP.
Registered Aboriginal Party (RAP) from DPC (Jan 2021).
Imagery from ESRI Online.

Figure 11.1 Vegetation and waterways Victoria (Waratah Bay)

Legend

- Landfall
- Proposed route
 - Subsea cable
 - Underground HVDC cable
- Survey area



Coordinate System: GDA 1994 MGA Zone 55
Projection: Transverse Mercator
Datum: GDA 1994

TasNetworks has made every effort to ensure this product is free of errors but does not warrant the map or its features are either spatially or temporally accurate or fit for a particular use.

TasNetworks provides this map without any warranty of any kind whatsoever, either express or implied.

© TasNetworks 2021

Date: 24/06/2021 6:20:06 PM
Prepared by: Helen Unkovich



PROJECT
MARINUS

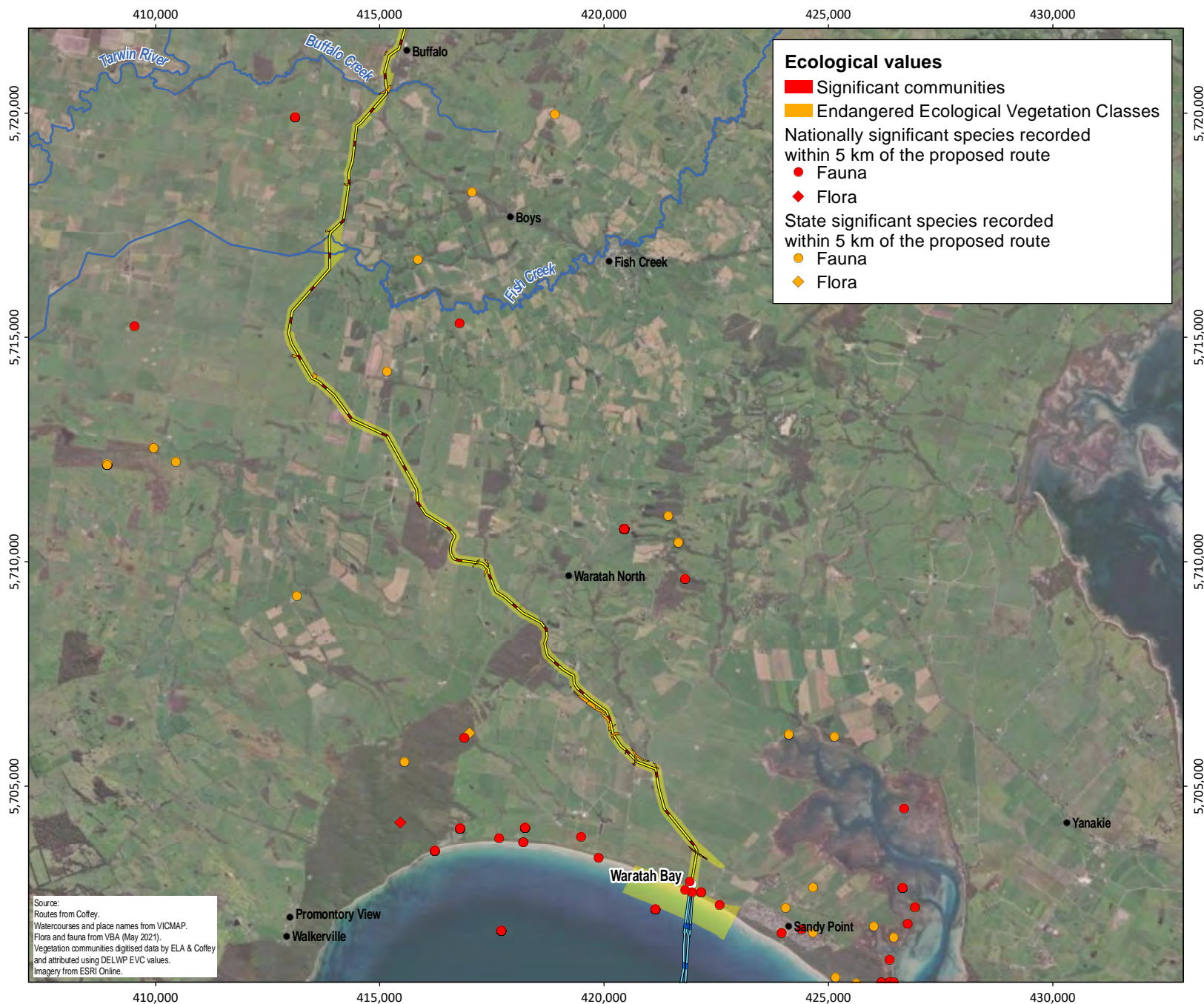


Figure 11.2 Vegetation and waterways Victoria (Tarwin Valley)

Legend

Proposed route

Underground HVDC cable

Survey area

Ecological values

Significant communities

Endangered Ecological Vegetation Classes

Nationally significant species recorded
within 5 km of the proposed route

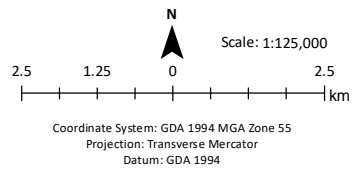
● Fauna

◆ Flora

State significant species recorded
within 5 km of the proposed route

● Fauna

◆ Flora



TasNetworks has made every effort to ensure this product is free of errors but does not warrant the map or its features are either spatially or temporally accurate or fit for a particular use.

TasNetworks provides this map without any warranty of any kind whatsoever, either express or implied.

© TasNetworks 2021

Date: 24/06/2021 6:20:06 PM

Prepared by: Helen Unkovich



PROJECT
MARINUS

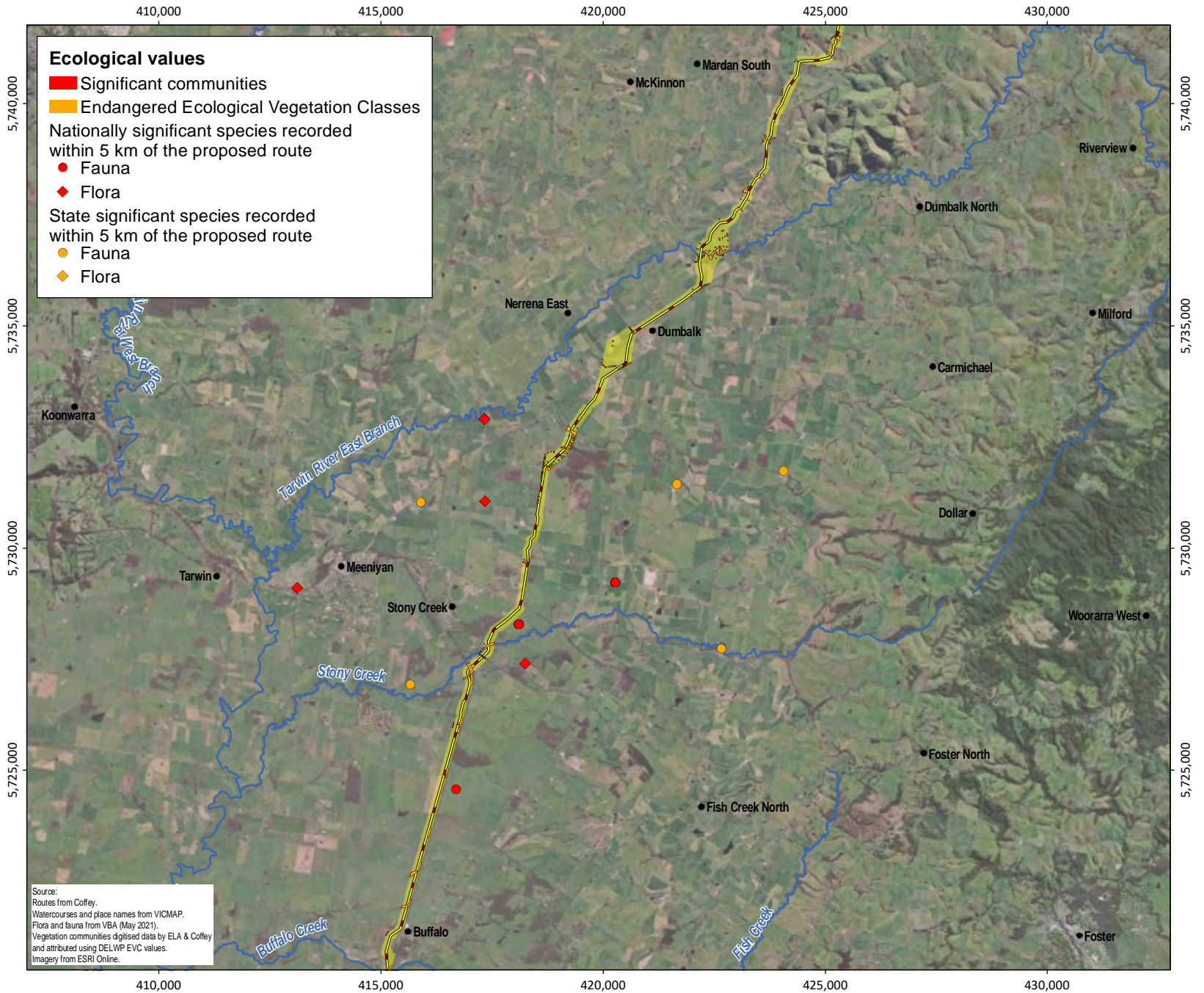


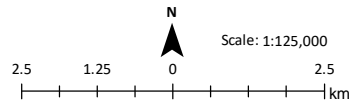
Figure 11.3 Vegetation and waterways Victoria (Latrobe Valley)

Legend

Proposed route

Underground HVDC cable

Survey area



Coordinate System: GDA 1994 MGA Zone 55
Projection: Transverse Mercator
Datum: GDA 1994

TasNetworks has made every effort to ensure this product is free of errors but does not warrant the map or its features are either spatially or temporally accurate or fit for a particular use.

TasNetworks provides this map without any warranty of any kind whatsoever, either express or implied.

© TasNetworks 2021

Date: 24/06/2021 6:20:06 PM

Prepared by: Helen Unkovich



PROJECT
MARINUS

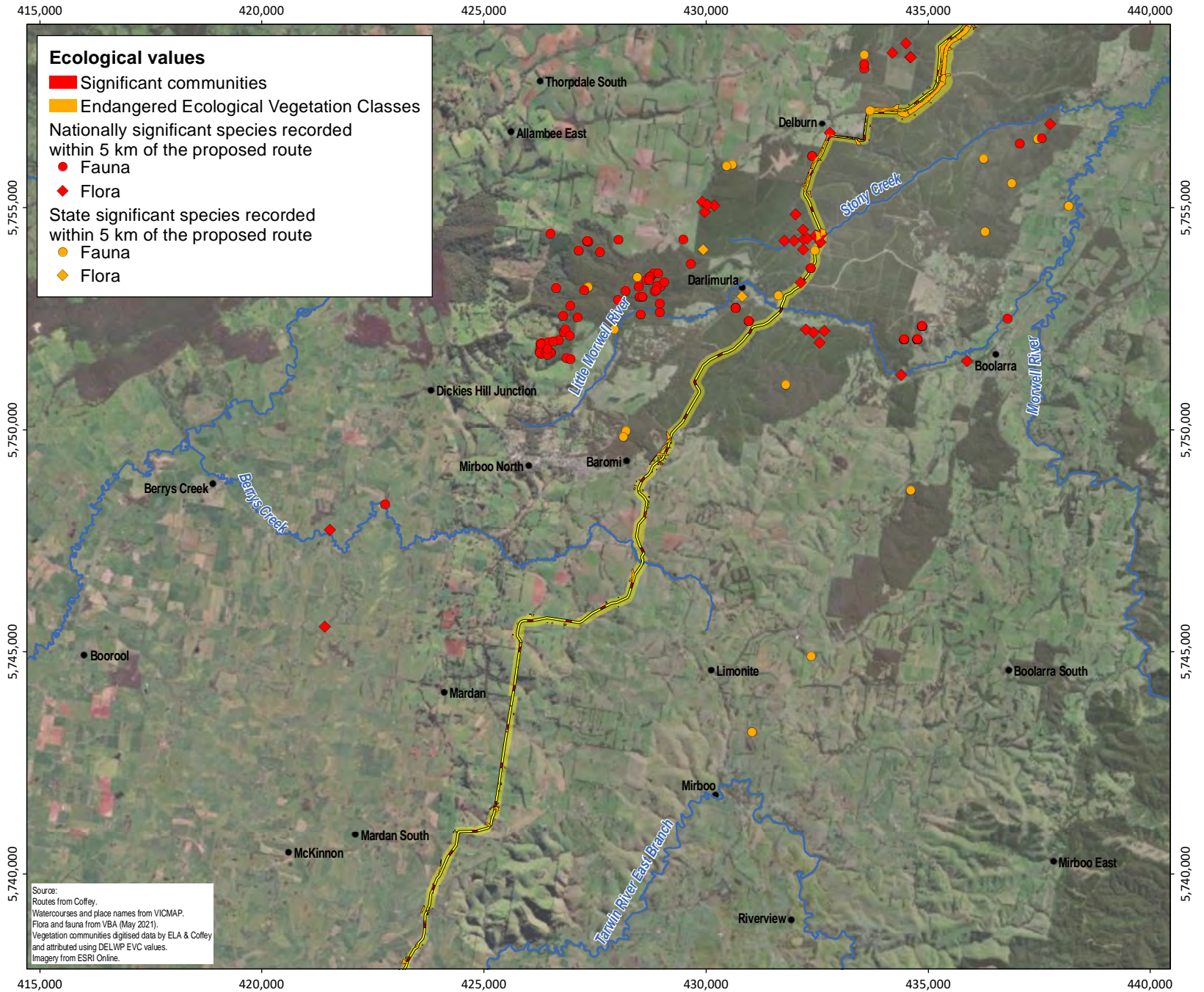
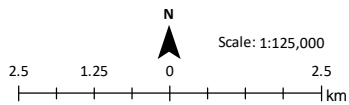


Figure 11.4 Vegetation and waterways Victoria (Hazelwood)

Legend

- Potential converter station
- Proposed route
- Underground HVDC cable
- Survey area



Coordinate System: GDA 1994 MGA Zone 55
Projection: Transverse Mercator
Datum: GDA 1994

TasNetworks has made every effort to ensure this product is free of errors but does not warrant the map or its features are either spatially or temporally accurate or fit for a particular use.

TasNetworks provides this map without any warranty of any kind whatsoever, either express or implied.

© TasNetworks 2021

Date: 24/06/2021 6:20:06 PM
Prepared by: Helen Unkovich



PROJECT **MARINUS**

