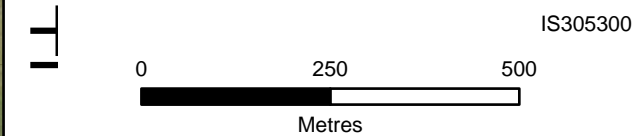




- Legend**
- - - S2M Interconnector - Shared alignment
 - S2M Interconnector Indicative Assessment Area (Option A)
 - S2M Interconnector Indicative Assessment Area (Option B)
 - AWRC River Basins
 - CMA boundaries
 - Watercourse
 - Waterbody
 - Western Water Recycled Water Plants
 - LGA Boundary



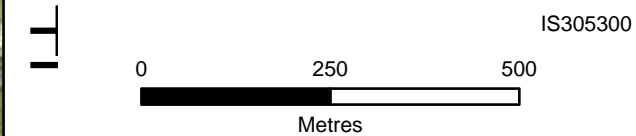
DATA SOURCES
 © Commonwealth of Australia (Geoscience Australia) 2006 Geodata Topo 250k Series 3; Vicmap Data © State of Victoria 2021; CH2M Beca 2021. Aerometrex Metromap 2021; ESRI Basemap 2021

COPYRIGHT: The concepts and information contained in this document are the copyright of Jacobs. Use or copying of the document in whole or in part without the written permission of Jacobs constitutes an infringement of copyright. Jacobs does not warrant that this document is definitive nor free of error and does not accept liability for any loss caused or arising from reliance upon information provided herein.



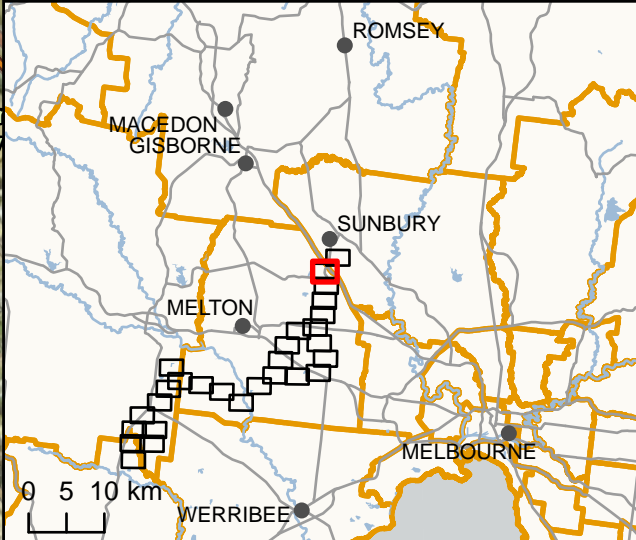


- Legend**
- - - S2M Interconnector - Shared alignment
 - S2M Interconnector Indicative Assessment Area (Option A)
 - S2M Interconnector Indicative Assessment Area (Option B)
 - DELWP Current Wetlands Inventory
 - AWRC River Basins
 - CMA boundaries
 - Watercourse
 - Waterbody
 - LGA Boundary



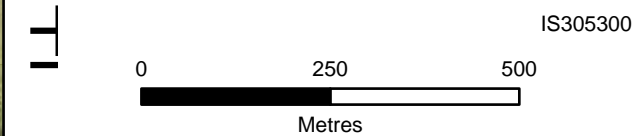
DATA SOURCES
 © Commonwealth of Australia (Geoscience Australia) 2006 Geodata Topo 250k Series 3; Vicmap Data © State of Victoria 2021; CH2M Beca 2021. Aerometrex Metromap 2021; ESRI Basemap 2021

COPYRIGHT: The concepts and information contained in this document are the copyright of Jacobs. Use or copying of the document in whole or in part without the written permission of Jacobs constitutes an infringement of copyright. Jacobs does not warrant that this document is definitive nor free of error and does not accept liability for any loss caused or arising from reliance upon information provided herein.



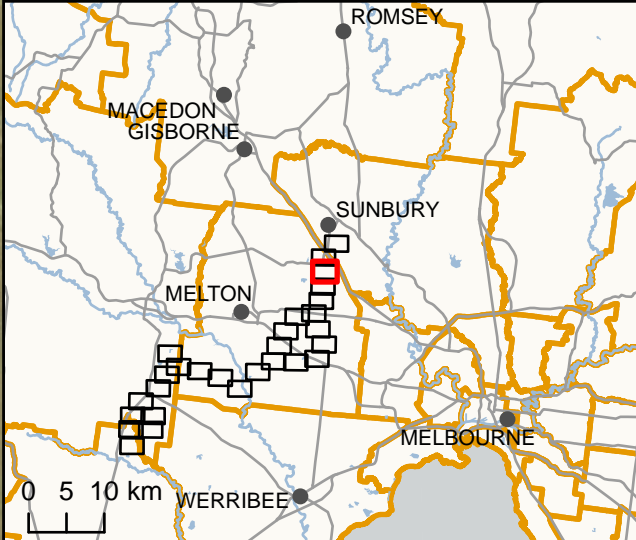


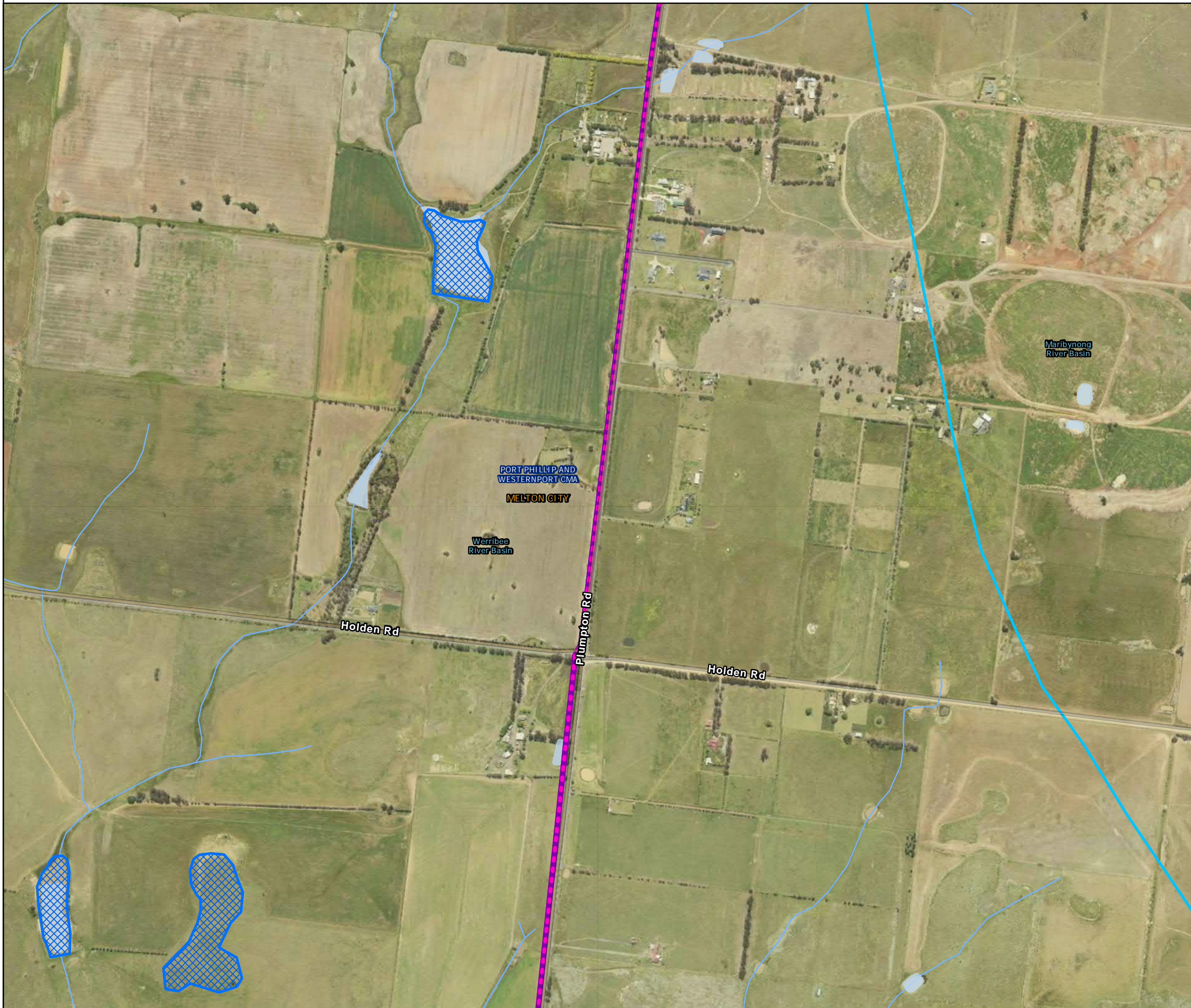
- Legend**
- - - S2M Interconnector - Shared alignment
 - S2M Interconnector Indicative Assessment Area (Option A)
 - S2M Interconnector Indicative Assessment Area (Option B)
 - DELWP Current Wetlands Inventory
 - AWRC River Basins
 - CMA boundaries
 - Watercourse
 - Waterbody
 - LGA Boundary



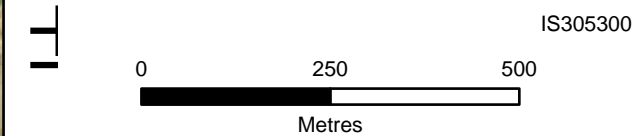
DATA SOURCES
 © Commonwealth of Australia (Geoscience Australia) 2006 Geodata Topo 250k Series 3; Vicmap Data © State of Victoria 2021; CH2M Beca 2021. Aerometrex Metromap 2021; ESRI Basemap 2021

COPYRIGHT: The concepts and information contained in this document are the copyright of Jacobs. Use or copying of the document in whole or in part without the written permission of Jacobs constitutes an infringement of copyright. Jacobs does not warrant that this document is definitive nor free of error and does not accept liability for any loss caused or arising from reliance upon information provided herein.



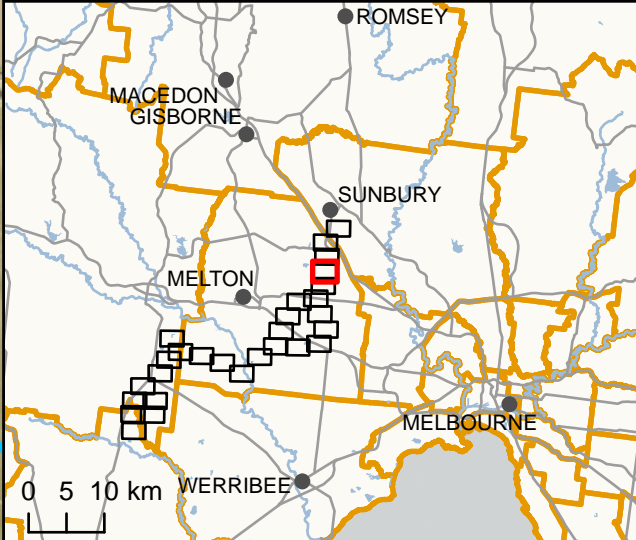


- Legend**
- - - S2M Interconnector - Shared alignment
 - S2M Interconnector Indicative Assessment Area (Option A)
 - S2M Interconnector Indicative Assessment Area (Option B)
 - DELWP Current Wetlands Inventory
 - AWRC River Basins
 - CMA boundaries
 - Watercourse
 - Waterbody
 - LGA Boundary



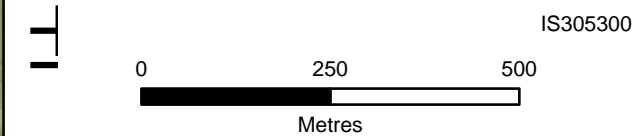
DATA SOURCES
 © Commonwealth of Australia (Geoscience Australia) 2006 Geodata Topo 250k Series 3; Vicmap Data © State of Victoria 2021; CH2M Beca 2021. Aerometrex Metromap 2021; ESRI Basemap 2021

COPYRIGHT: The concepts and information contained in this document are the copyright of Jacobs. Use or copying of the document in whole or in part without the written permission of Jacobs constitutes an infringement of copyright. Jacobs does not warrant that this document is definitive nor free of error and does not accept liability for any loss caused or arising from reliance upon information provided herein.



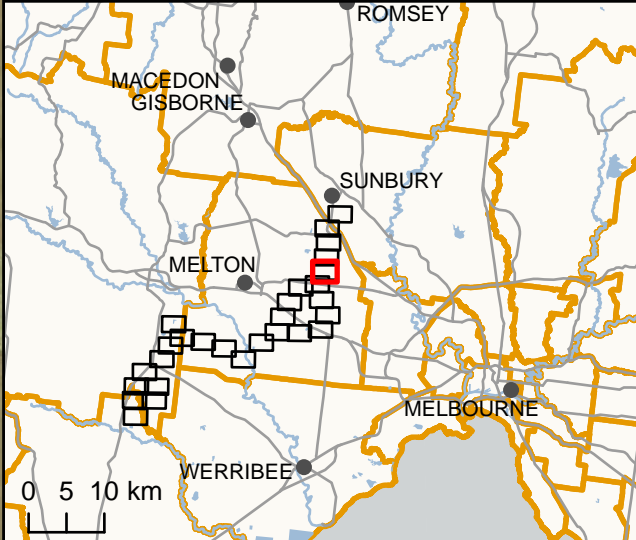


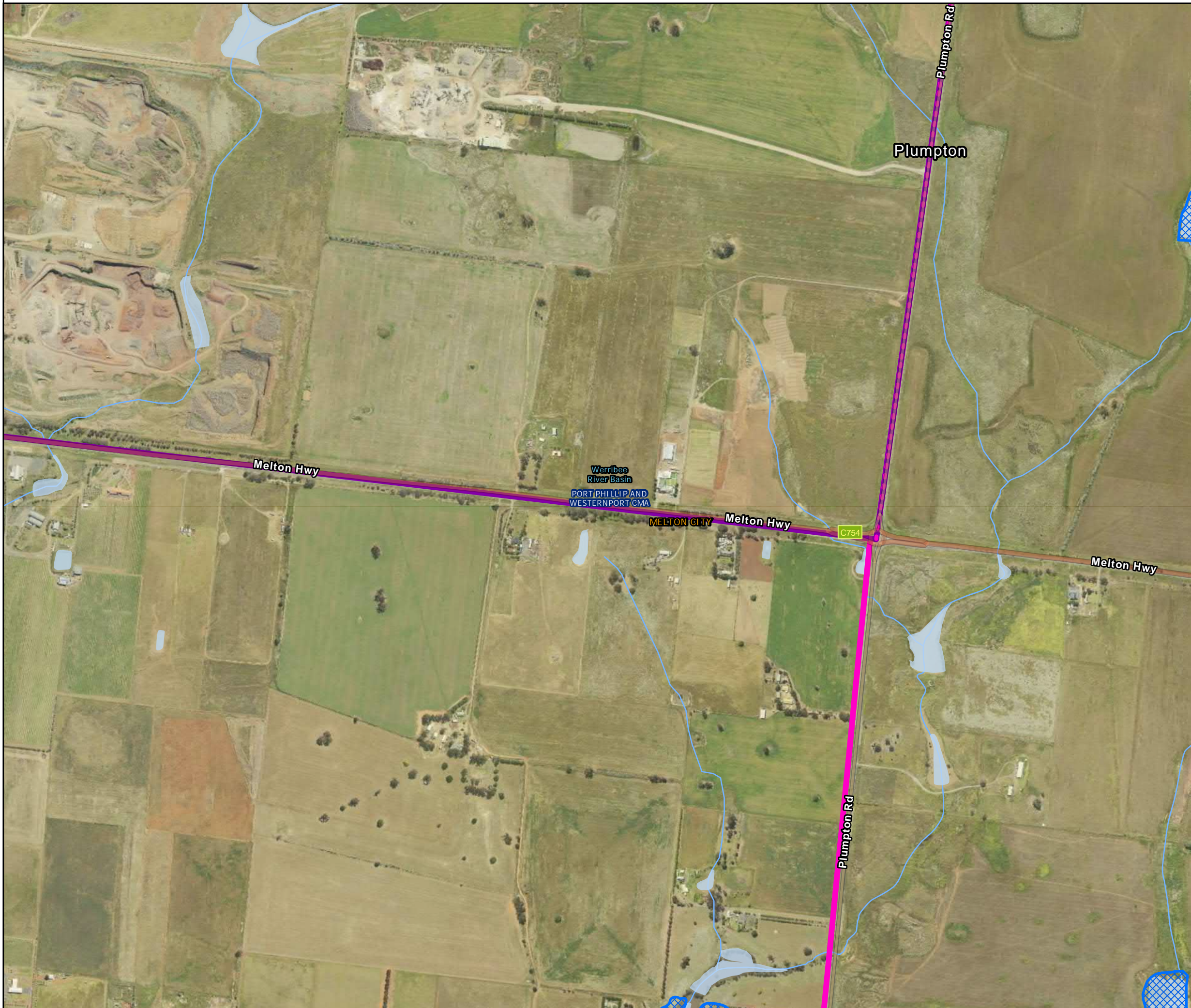
- Legend**
- - - S2M Interconnector - Shared alignment
 - S2M Interconnector Indicative Assessment Area (Option A)
 - S2M Interconnector Indicative Assessment Area (Option B)
 - DELWP Current Wetlands Inventory
 - AWRC River Basins
 - CMA boundaries
 - Watercourse
 - Waterbody
 - LGA Boundary



DATA SOURCES
 © Commonwealth of Australia (Geoscience Australia) 2006 Geodata Topo 250k Series 3; Vicmap Data © State of Victoria 2021; CH2M Beca 2021. Aerometrex Metromap 2021; ESRI Basemap 2021

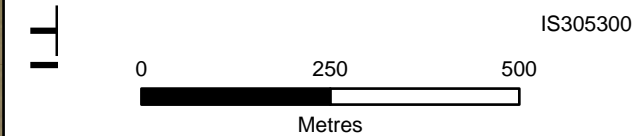
COPYRIGHT: The concepts and information contained in this document are the copyright of Jacobs. Use or copying of the document in whole or in part without the written permission of Jacobs constitutes an infringement of copyright. Jacobs does not warrant that this document is definitive nor free of error and does not accept liability for any loss caused or arising from reliance upon information provided herein.





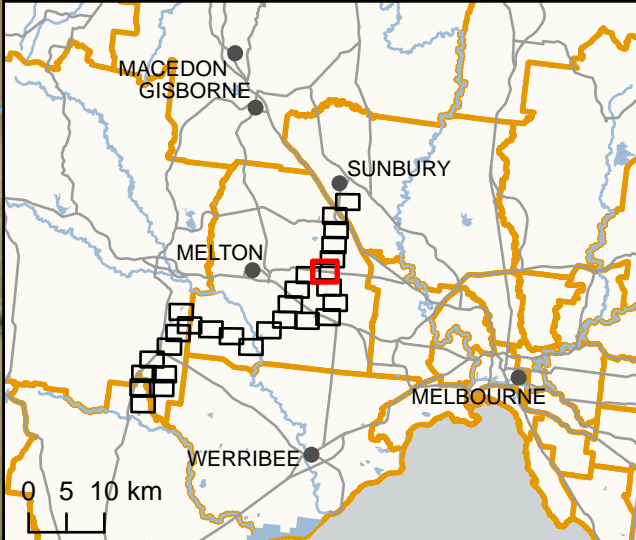
Legend

- S2M Interconnector - Shared alignment
- S2M Interconnector Indicative Assessment Area (Option A)
- S2M Interconnector Indicative Assessment Area (Option B)
- DELWP Current Wetlands Inventory
- AWRC River Basins
- CMA boundaries
- Watercourse
- Waterbody
- LGA Boundary



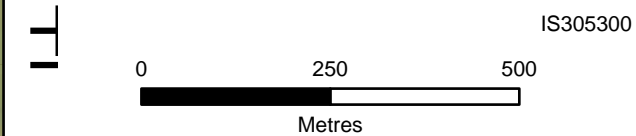
DATA SOURCES
 © Commonwealth of Australia (Geoscience Australia) 2006 Geodata Topo 250k Series 3; Vicmap Data © State of Victoria 2021; CH2M Beca 2021. Aerometrex Metromap 2021; ESRI Basemap 2021

COPYRIGHT: The concepts and information contained in this document are the copyright of Jacobs. Use or copying of the document in whole or in part without the written permission of Jacobs constitutes an infringement of copyright. Jacobs does not warrant that this document is definitive nor free of error and does not accept liability for any loss caused or arising from reliance upon information provided herein.



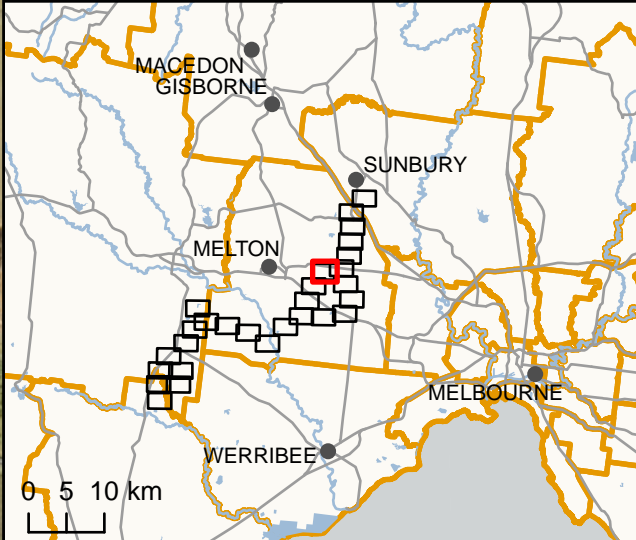


- Legend
- S2M Interconnector Indicative Assessment Area (Option A)
 - AWRC River Basins
 - CMA boundaries
 - Watercourse
 - Waterbody
 - LGA Boundary



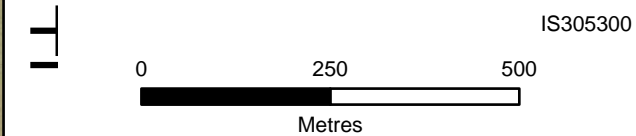
DATA SOURCES
 © Commonwealth of Australia (Geoscience Australia) 2006 Geodata Topo 250k Series 3; Vicmap Data © State of Victoria 2021; CH2M Beca 2021. Aerometrex Metromap 2021; ESRI Basemap 2021

COPYRIGHT: The concepts and information contained in this document are the copyright of Jacobs. Use or copying of the document in whole or in part without the written permission of Jacobs constitutes an infringement of copyright. Jacobs does not warrant that this document is definitive nor free of error and does not accept liability for any loss caused or arising from reliance upon information provided herein.



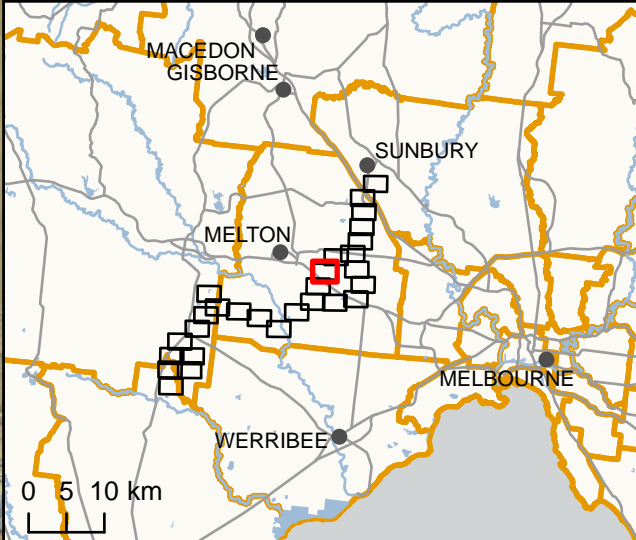


- Legend**
- S2M Interconnector Indicative Assessment Area (Option A)
 - DELWP Current Wetlands Inventory
 - AWRC River Basins
 - CMA boundaries
 - Watercourse
 - Waterbody
 - LGA Boundary



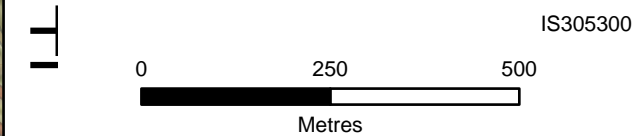
DATA SOURCES
 © Commonwealth of Australia (Geoscience Australia) 2006 Geodata Topo 250k Series 3; Vicmap Data © State of Victoria 2021; CH2M Beca 2021. Aerometrex Metromap 2021; ESRI Basemap 2021

COPYRIGHT: The concepts and information contained in this document are the copyright of Jacobs. Use or copying of the document in whole or in part without the written permission of Jacobs constitutes an infringement of copyright. Jacobs does not warrant that this document is definitive nor free of error and does not accept liability for any loss caused or arising from reliance upon information provided herein.





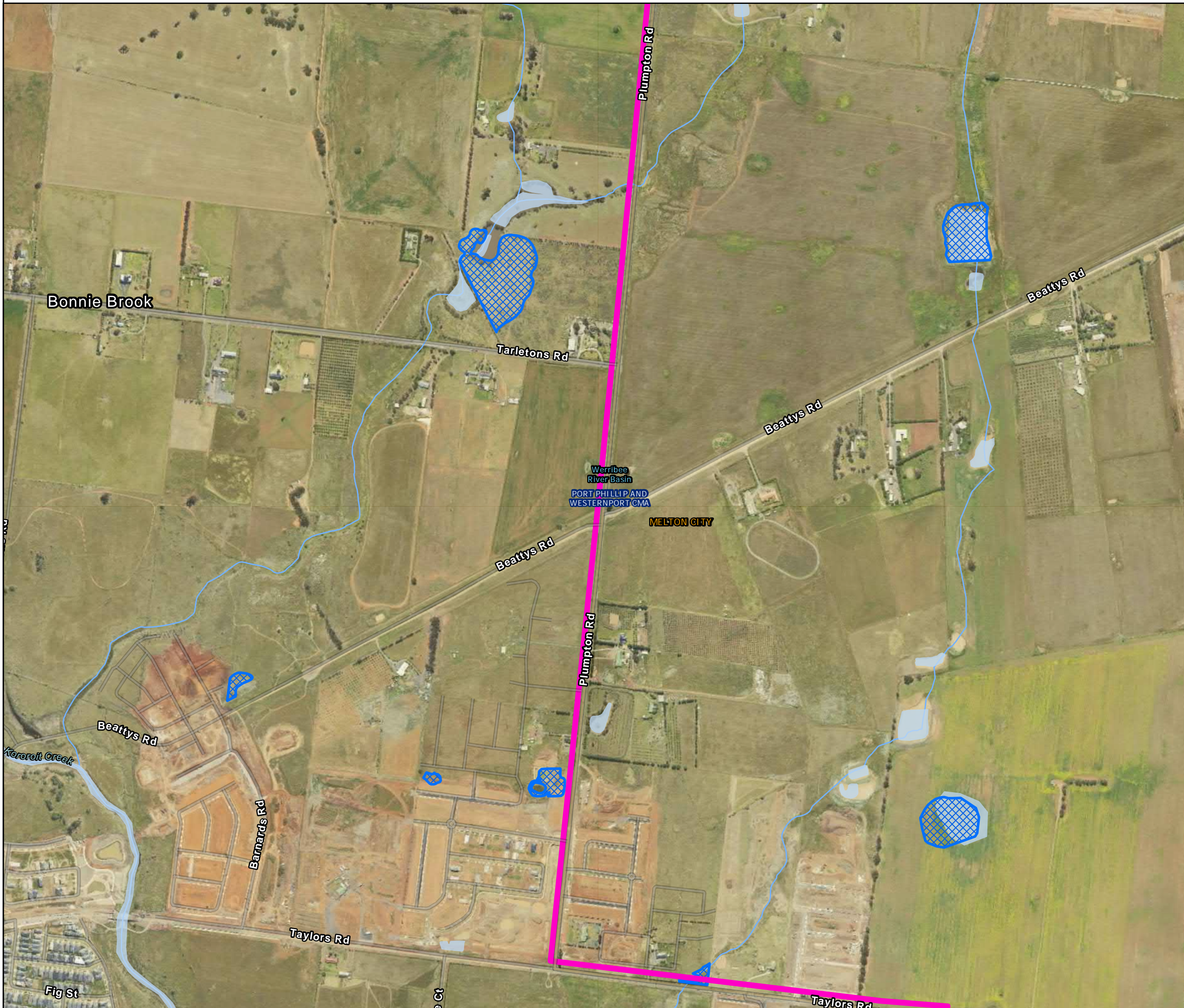
- Legend
- S2M Interconnector Indicative Assessment Area (Option A)
 - DELWP Current Wetlands Inventory
 - AWRC River Basins
 - CMA boundaries
 - Waterbody
 - LGA Boundary



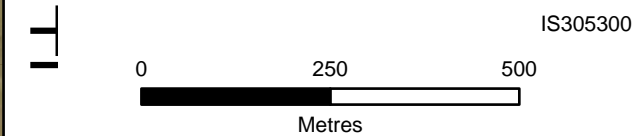
DATA SOURCES
 © Commonwealth of Australia (Geoscience Australia) 2006 Geodata Topo 250k Series 3; Vicmap Data © State of Victoria 2021; CH2M Beica 2021. Aerometrex Metromap 2021; ESRI Basemap 2021

COPYRIGHT: The concepts and information contained in this document are the copyright of Jacobs. Use or copying of the document in whole or in part without the written permission of Jacobs constitutes an infringement of copyright. Jacobs does not warrant that this document is definitive nor free of error and does not accept liability for any loss caused or arising from reliance upon information provided herein.



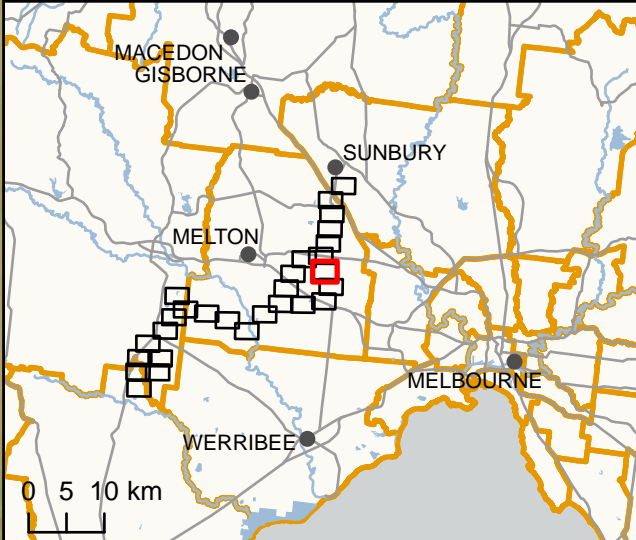


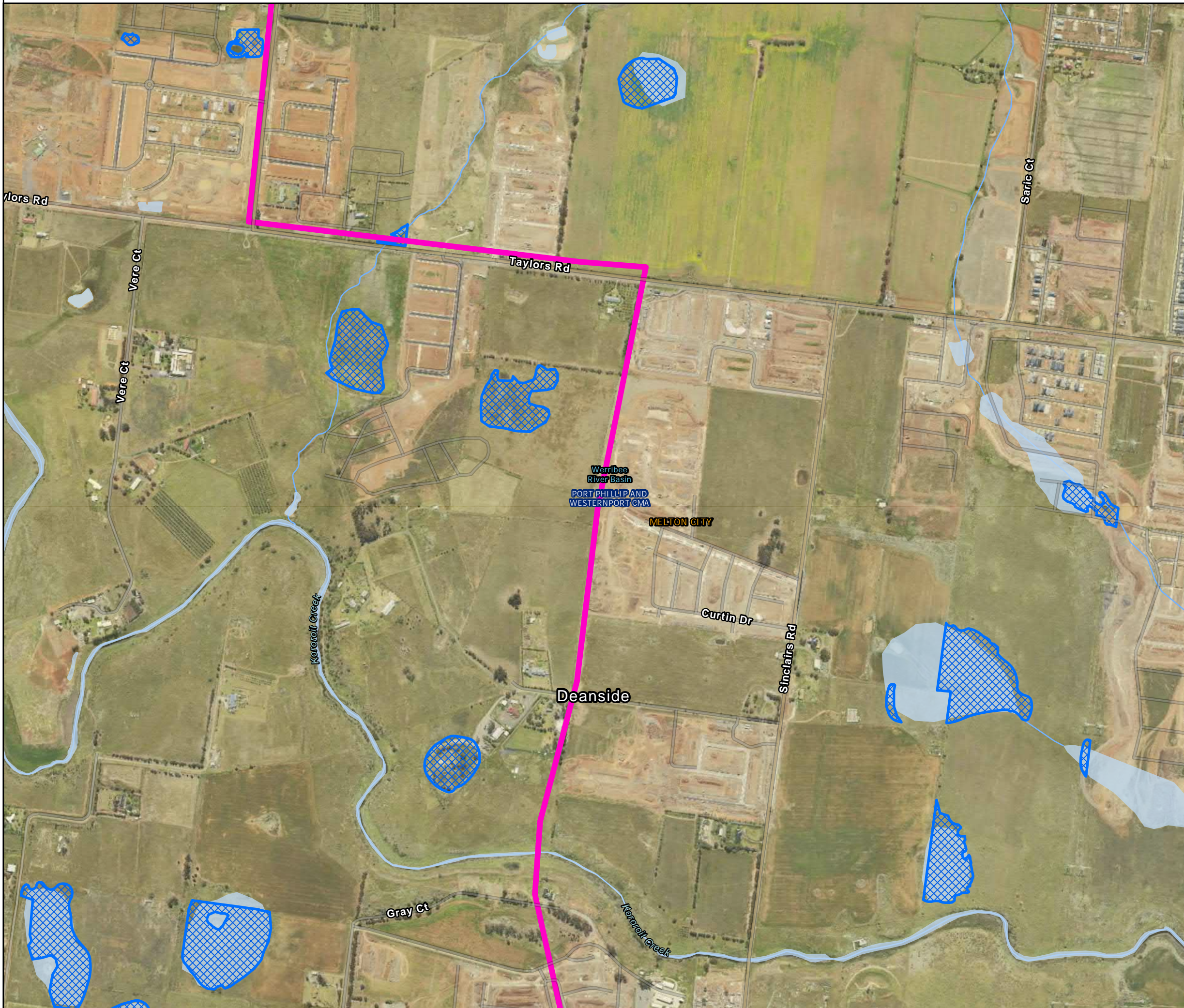
- Legend
- S2M Interconnector Indicative Assessment Area (Option B)
 - DELWP Current Wetlands Inventory
 - AWRC River Basins
 - CMA boundaries
 - Watercourse
 - Waterbody
 - LGA Boundary



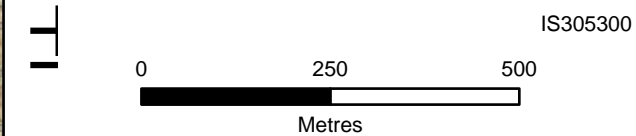
DATA SOURCES
 © Commonwealth of Australia (Geoscience Australia) 2006 Geodata Topo 250k Series 3; Vicmap Data © State of Victoria 2021; CH2M Beca 2021. Aerometrex Metromap 2021; ESRI Basemap 2021

COPYRIGHT: The concepts and information contained in this document are the copyright of Jacobs. Use or copying of the document in whole or in part without the written permission of Jacobs constitutes an infringement of copyright. Jacobs does not warrant that this document is definitive nor free of error and does not accept liability for any loss caused or arising from reliance upon information provided herein.





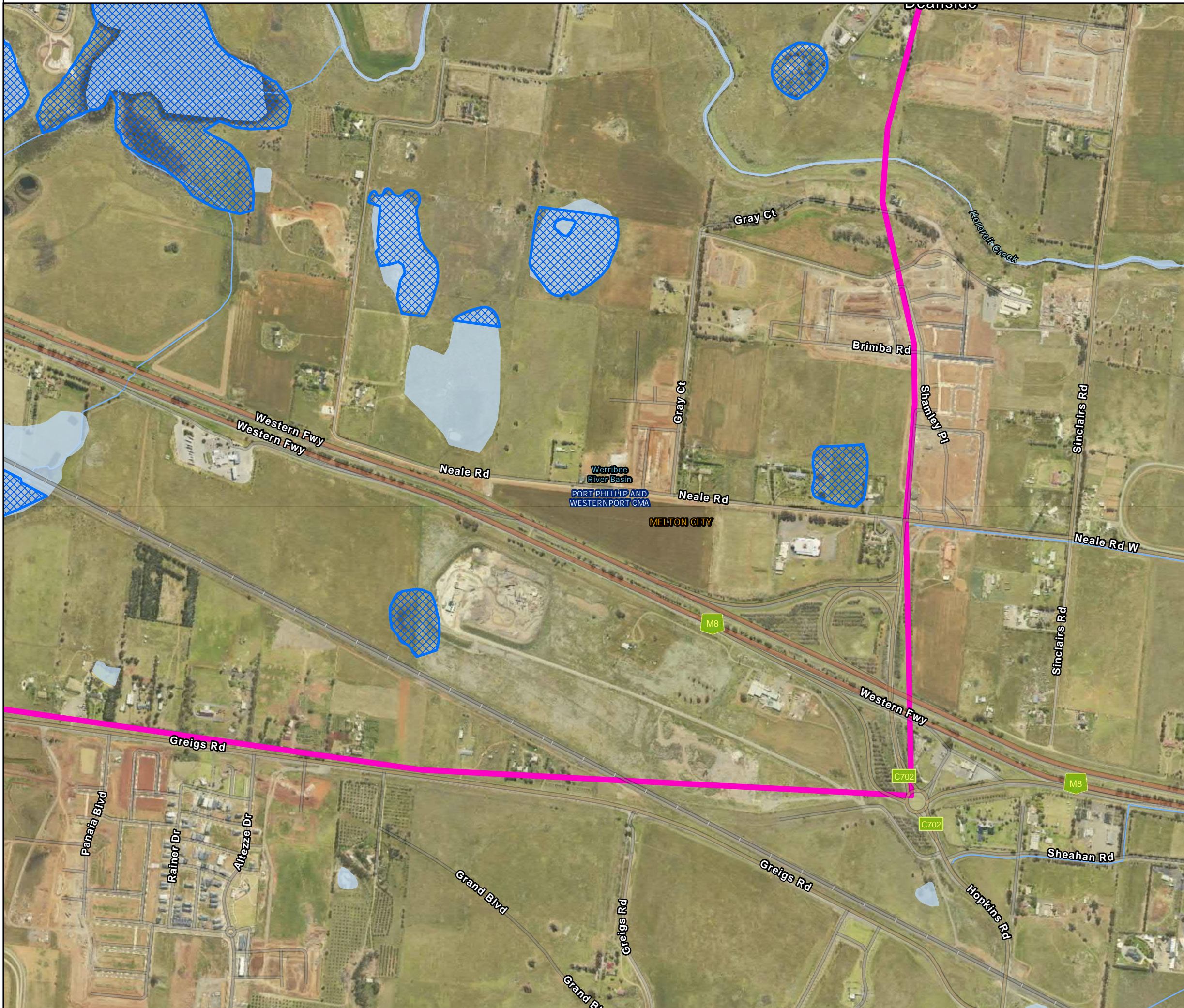
- Legend**
- S2M Interconnector Indicative Assessment Area (Option B)
 - DELWP Current Wetlands Inventory
 - AWRC River Basins
 - CMA boundaries
 - Watercourse
 - Waterbody
 - LGA Boundary



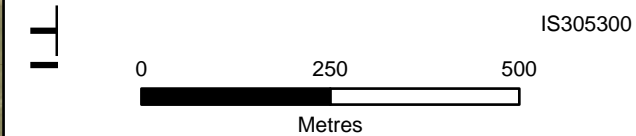
DATA SOURCES
 © Commonwealth of Australia (Geoscience Australia) 2006 Geodata Topo 250k Series 3; Vicmap Data © State of Victoria 2021; CH2M Beca 2021. Aerometrex Metromap 2021; ESRI Basemap 2021

COPYRIGHT: The concepts and information contained in this document are the copyright of Jacobs. Use or copying of the document in whole or in part without the written permission of Jacobs constitutes an infringement of copyright. Jacobs does not warrant that this document is definitive nor free of error and does not accept liability for any loss caused or arising from reliance upon information provided herein.



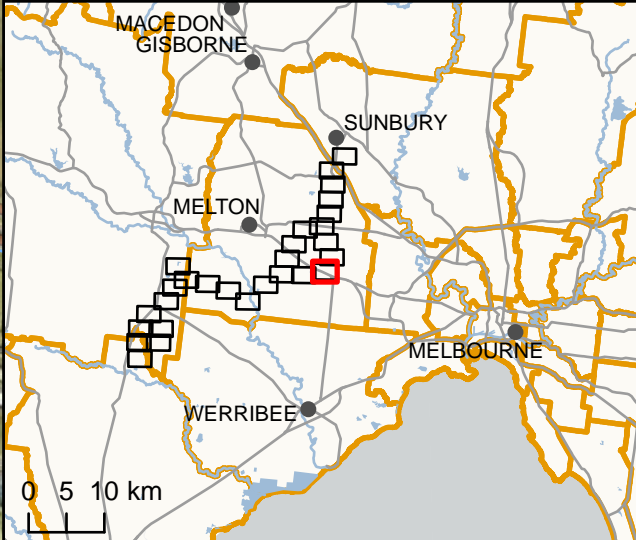


- Legend
- S2M Interconnector Indicative Assessment Area (Option B)
 - DELWP Current Wetlands Inventory
 - AWRC River Basins
 - CMA boundaries
 - Watercourse
 - Waterbody
 - LGA Boundary



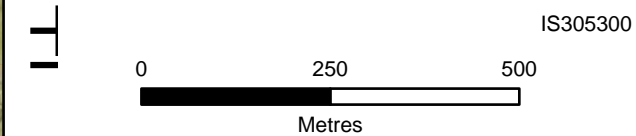
DATA SOURCES
 © Commonwealth of Australia (Geoscience Australia) 2006 Geodata Topo 250k Series 3; Vicmap Data © State of Victoria 2021; CH2M Beca 2021. Aerometrex Metromap 2021; ESRI Basemap 2021

COPYRIGHT: The concepts and information contained in this document are the copyright of Jacobs. Use or copying of the document in whole or in part without the written permission of Jacobs constitutes an infringement of copyright. Jacobs does not warrant that this document is definitive nor free of error and does not accept liability for any loss caused or arising from reliance upon information provided herein.



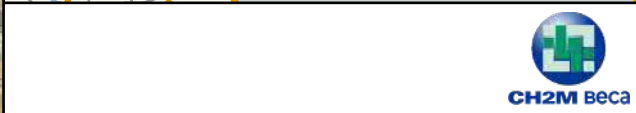
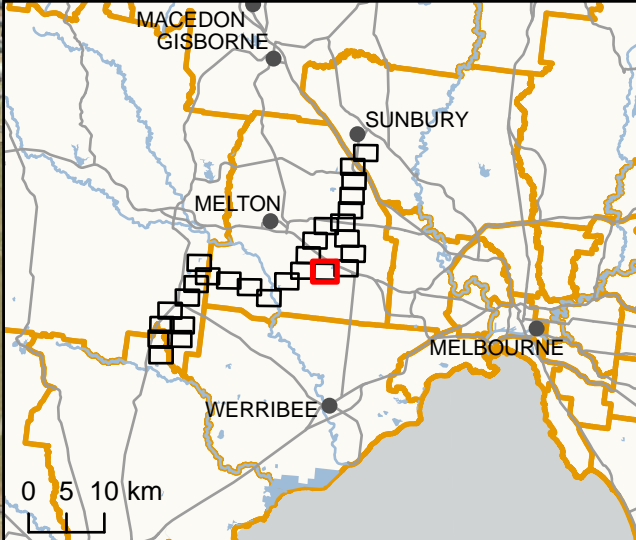


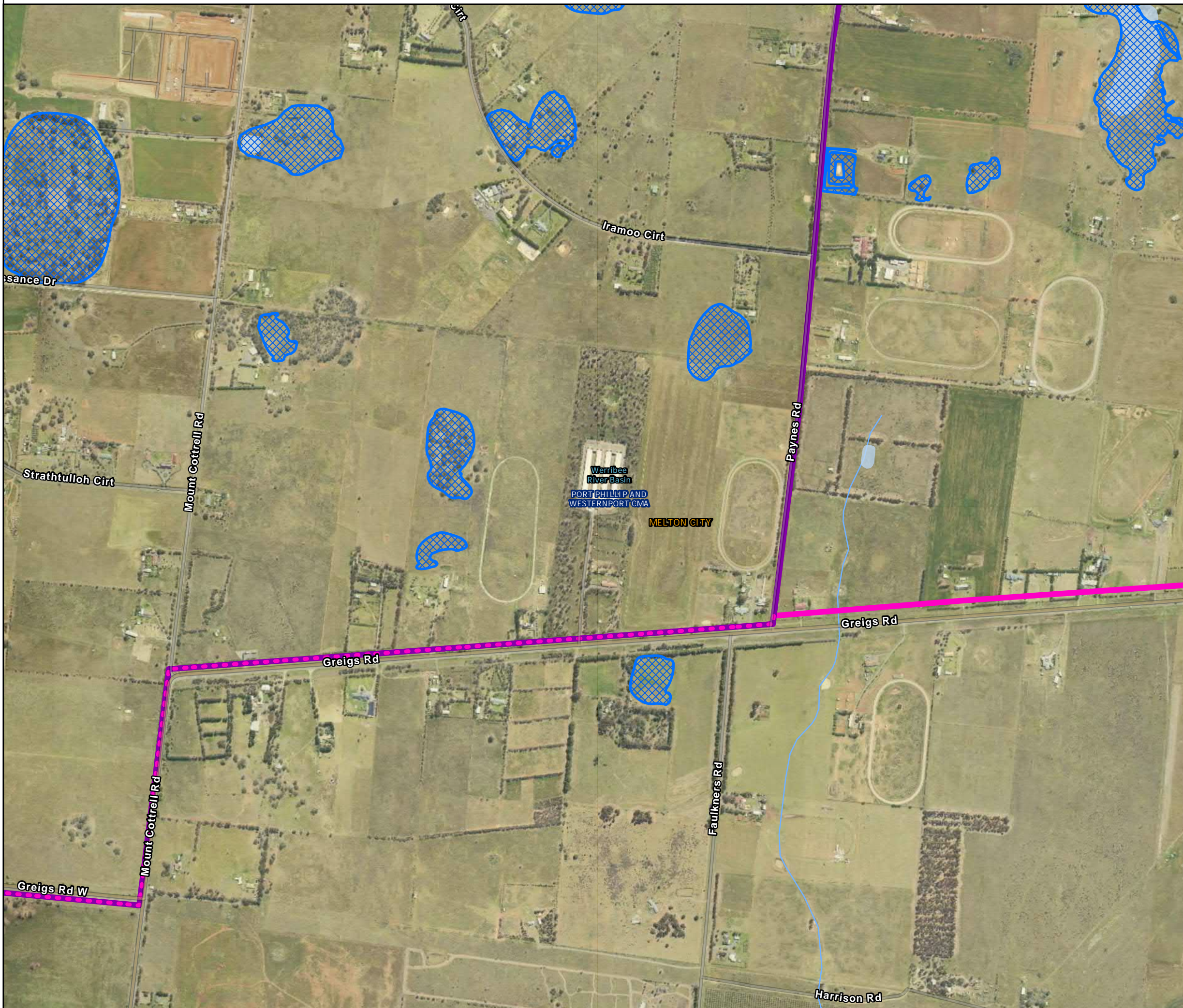
- Legend
- S2M Interconnector Indicative Assessment Area (Option B)
 - DELWP Current Wetlands Inventory
 - AWRC River Basins
 - CMA boundaries
 - Watercourse
 - Waterbody
 - LGA Boundary



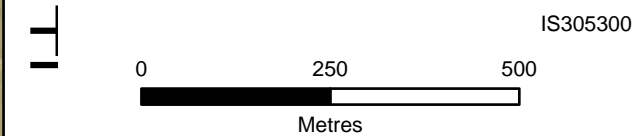
DATA SOURCES
 © Commonwealth of Australia (Geoscience Australia) 2006 Geodata Topo 250k Series 3; Vicmap Data © State of Victoria 2021; CH2M Beca 2021. Aerometrex Metromap 2021; ESRI Basemap 2021

COPYRIGHT: The concepts and information contained in this document are the copyright of Jacobs. Use or copying of the document in whole or in part without the written permission of Jacobs constitutes an infringement of copyright. Jacobs does not warrant that this document is definitive nor free of error and does not accept liability for any loss caused or arising from reliance upon information provided herein.





- Legend**
- - - S2M Interconnector - Shared alignment
 - S2M Interconnector Indicative Assessment Area (Option A)
 - S2M Interconnector Indicative Assessment Area (Option B)
 - DELWP Current Wetlands Inventory
 - AWRC River Basins
 - CMA boundaries
 - Watercourse
 - Waterbody
 - LGA Boundary



DATA SOURCES
 © Commonwealth of Australia (Geoscience Australia) 2006 Geodata Topo 250k Series 3; Vicmap Data © State of Victoria 2021; CH2M Beca 2021. Aerometrex Metromap 2021; ESRI Basemap 2021

COPYRIGHT: The concepts and information contained in this document are the copyright of Jacobs. Use or copying of the document in whole or in part without the written permission of Jacobs constitutes an infringement of copyright. Jacobs does not warrant that this document is definitive nor free of error and does not accept liability for any loss caused or arising from reliance upon information provided herein.

