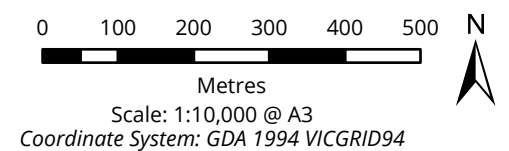


### Legend

- Project area
- Trail alignment**
  - Existing Walking Trail
  - New Walking Trail
- Planning Overlay**
  - Environmental Significance Overlay (ESO)
  - Significant Landscape Overlay (SLO)

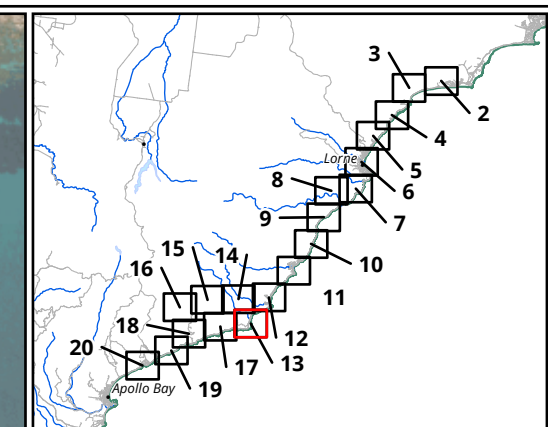
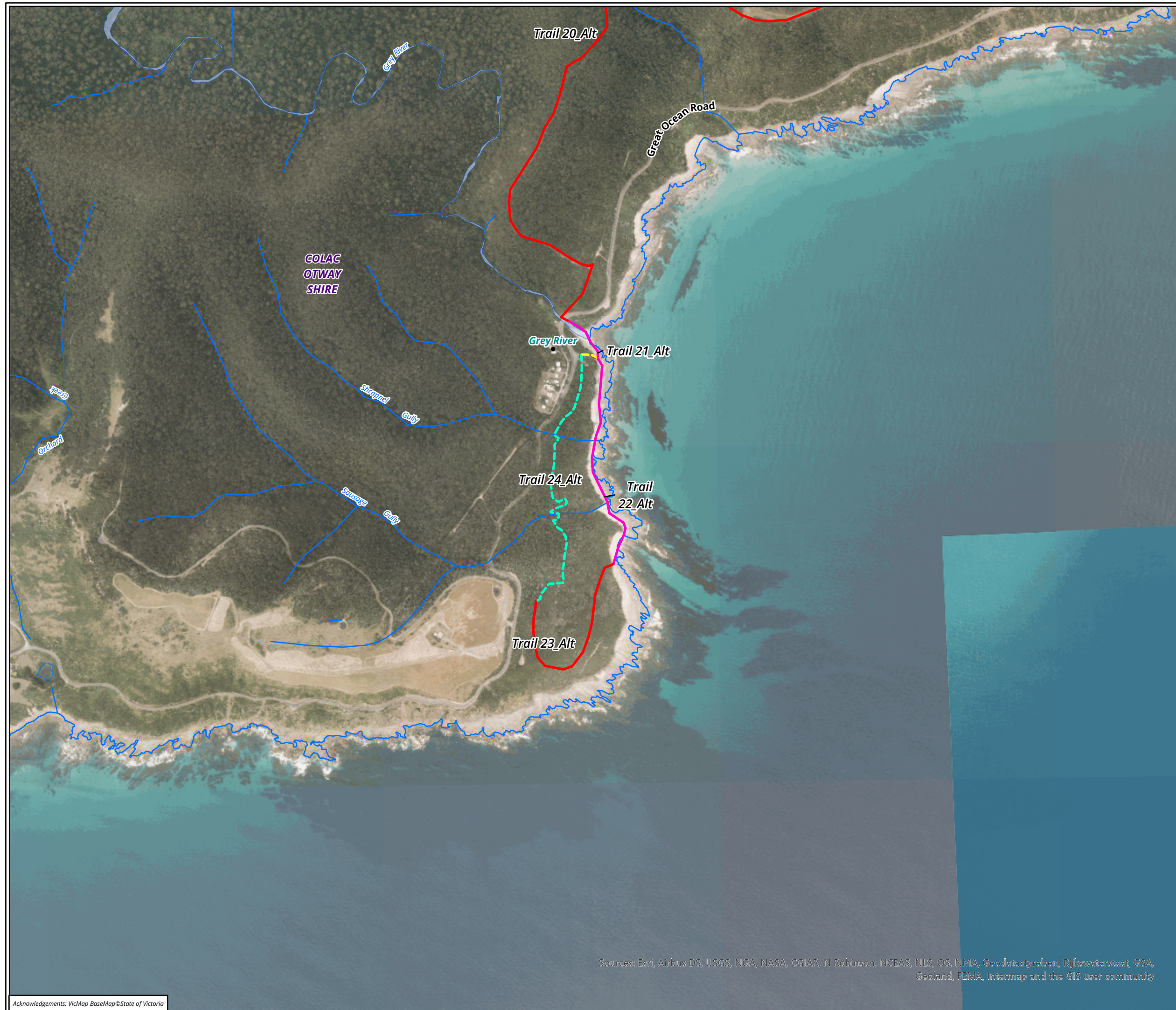
**Figure 3.12 Environment and landscape overlays in the vicinity of the study area**



Matter: 35871,  
Date: 07 January 2022,  
Prepared for: JM, Prepared by: MK, Last edited by: mknudsen  
Layout: 35871\_F3\_Overlay  
Project: P:\35800s\35871\Mapping\  
35871\_GORT\_WT\_Planning\_Figures.aprx

Sources: Esri, Airbus DS, USGS, NGA, NASA, CGIAR, N Robinson, NCEAS, NLS, OS, NMA, Geodatastyrelsen, Rijkswaterstaat, GSA, Geoland, FEMA, Intermap and the GIS user community





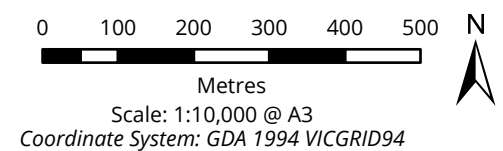
**Legend**

Project area

**Trail alignment**

- Beach/Rock Shelf
- Existing Informal Trail
- Existing Walking Trail
- New Walking Trail

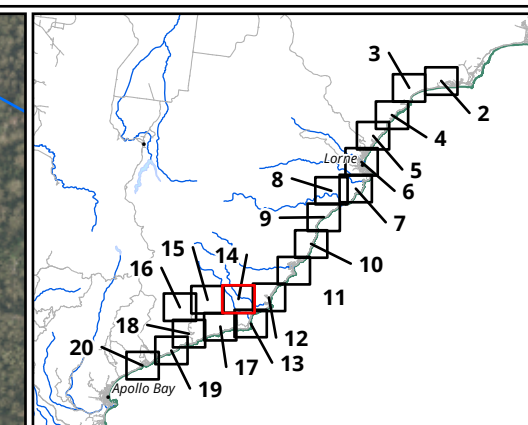
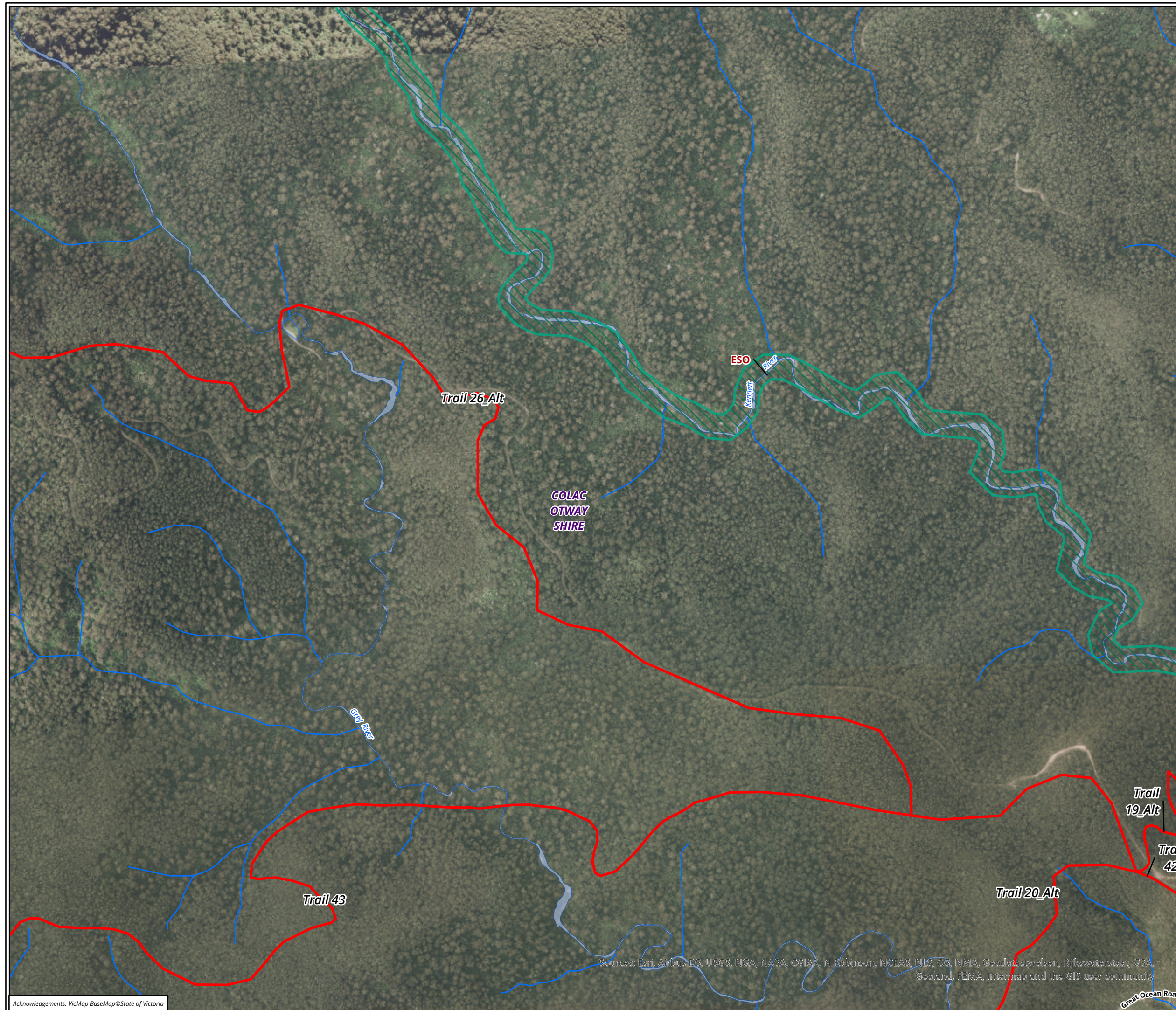
**Figure 3.13 Environment and landscape overlays in the vicinity of the study area**




Matter: 35871,  
Date: 07 January 2022 ,  
Prepared for: JM, Prepared by: MK, Last edited by: mknudsen  
Layout: 35871\_F3\_Overlay  
Project: P:\35800s\35871\Mapping\  
35871\_GORT\_WT\_Planning\_Figures.aprx

Sources: Esri, Airbus DS, USGS, NGA, NASA, CGIAR, N Robinson, NCEAS, NLS, OS, NMA, Geodatastyrelsen, Rijkswaterstaat, GSA, Geoland, FEMA, Intermap and the GIS user community






**Legend**

 Project area

**Trail alignment**

 New Walking Trail

**Planning Overlay**

 Environmental Significance Overlay (ESO)

**Figure 3.14 Environment and landscape overlays in the vicinity of the study area**

0 100 200 300 400 500  
Metres  
Scale: 1:10,000 @ A3  
Coordinate System: GDA 1994 VICGRID94



Matter: 35871,  
Date: 07 January 2022 ,  
Prepared for: JM, Prepared by: MK, Last edited by: mknudsen  
Layout: 35871\_F3\_Overlay  
Project: P:\35800s\35871\Mapping\  
35871\_GORT\_WT\_Planning\_Figures.aprx