

## **Attachment J - Figures**

Figure 1: AMG coordinates

Figure 2: Site Location

Figure 3: Project Master Plan

Figure 4: Precinct Plan

Figure 5: Planning Zones

Figure 6: Planning Overlays

Figure 7: Site Plan

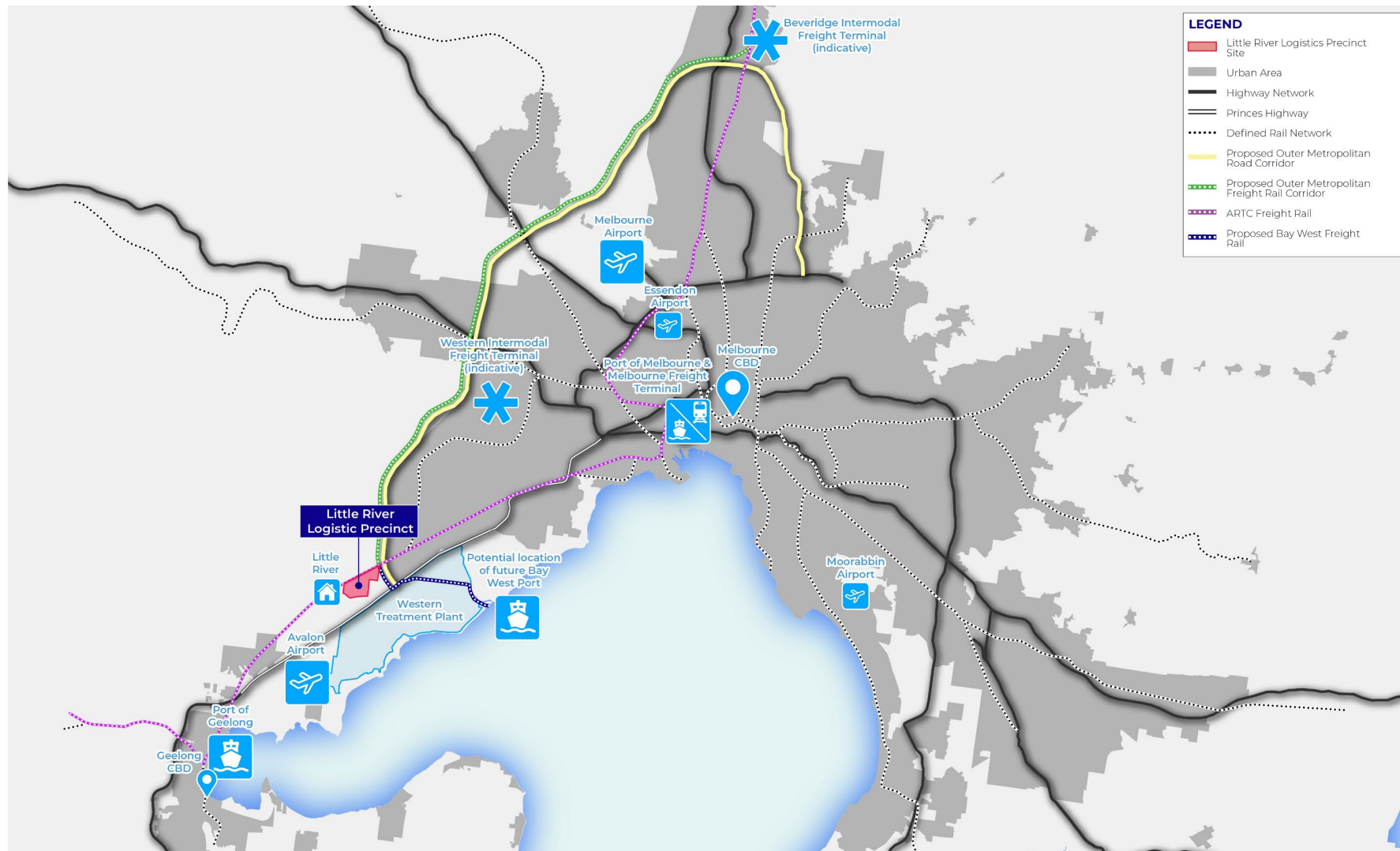
Figure 8: Victorian Bioregions

Figure 9: Sensitive Receptors

Figure 10: Tributary of Ryans Swamp Drain traversing site



Figure 2: Site Location



DISCLAIMER

This drawing shall only be used for the purpose for which it was commissioned. Unauthorised use of the drawings is prohibited. Do not scale this drawing. Use only figured dimensions. Report any discrepancy to the Architect or Urban Designer for clarification prior to the commencement of any work.

LEGEND / NOTES

ISSUE DATE REVISION REVISION BY APPROVED BY

PI 30.05.23 Draft JM/HW TP/GK

PROJECT

Little River Logistics Precinct

DRAWING

Regional Location Plan

A-1.1 /P1



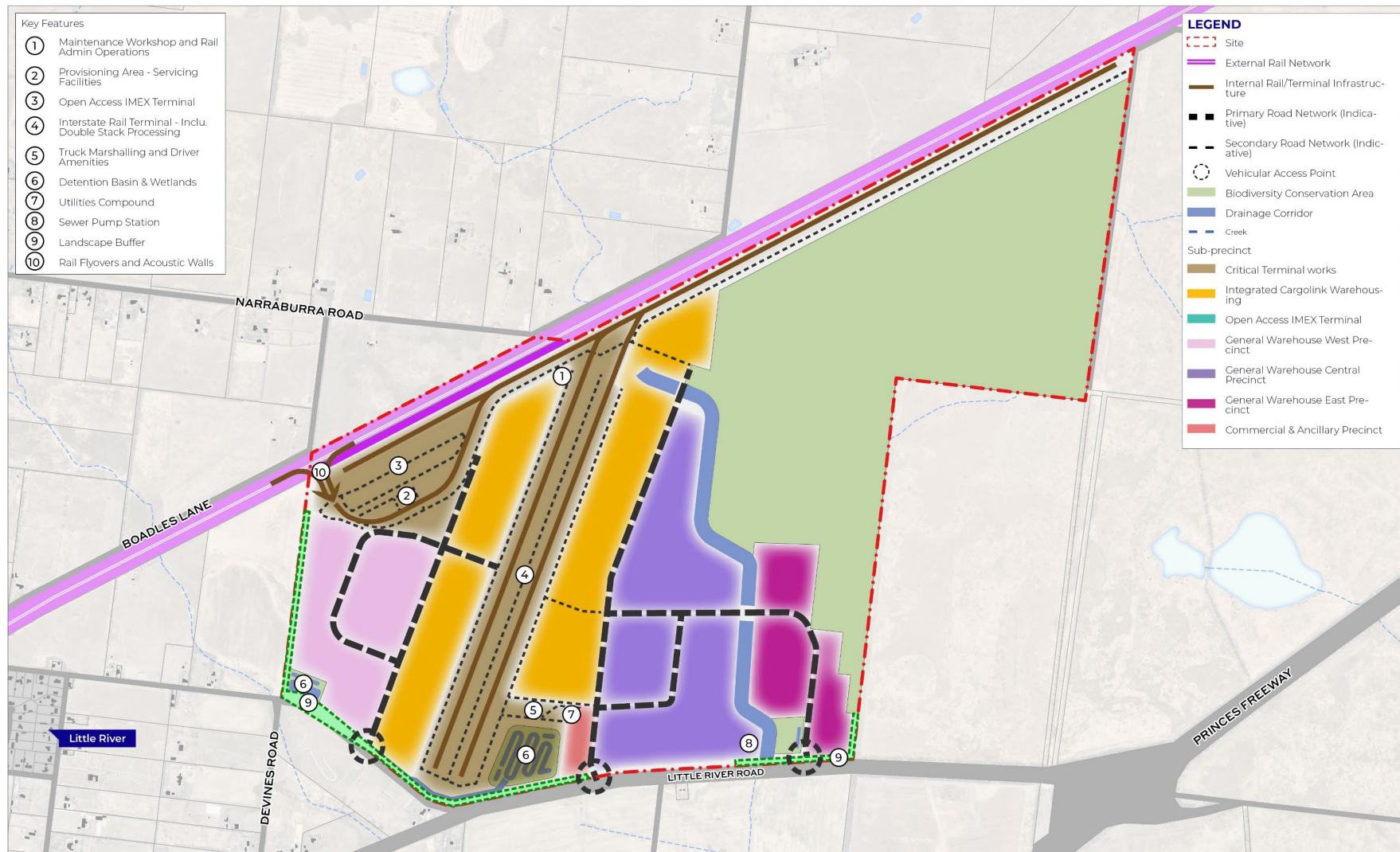
Ethos Urban Pty Ltd  
 ABN 12 627 087 921 ACN 015 087 921  
 www.ethosurban.com  
 Level 18 Collins Street Melbourne  
 VIC 3000 T +61 3 9656 0962

DRAFT



JOB NO.	DWG NO.	ISSUE	DATE	DRAWN BY
3220336	A-1.1	P1	30.05.23	JB

Figure 3: Project Master Plan



**DISCLAIMER**

This drawing shall only be used for the purpose for which it was commissioned. Unauthorised use of the drawings is prohibited. Do not scale this drawing. Use only figured dimensions. Report any discrepancy to the Architect or Urban Designer for clarification prior to the commencement of any work.

**LEGEND / NOTES**

ISSUE	DATE	REVISION	REVISION BY	APPROVED BY
P1	30.05.23	Draft	JM/HW	TP/GK

**PROJECT**

Little River Logistics Precinct

**DRAWING**

Illustrative Master Plan

A-16  
/P1



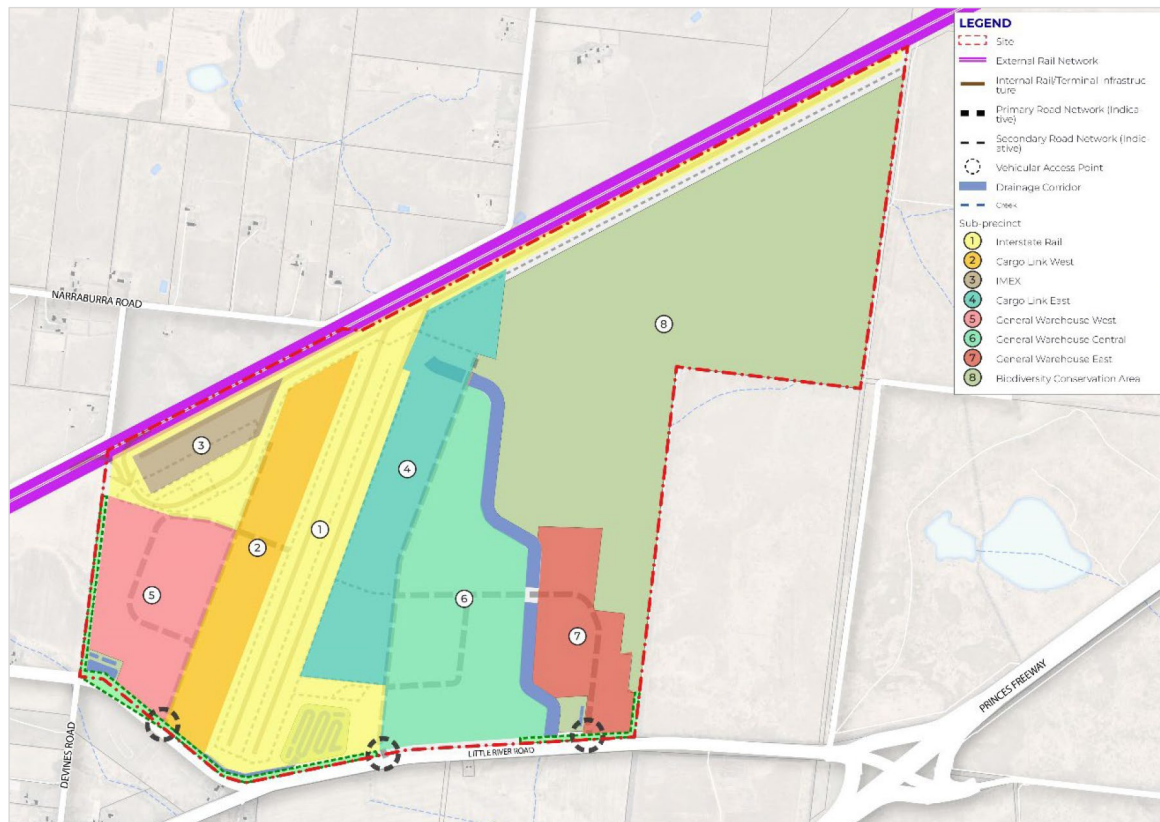
Ethos Urban Pty. Ltd.  
 ABN: 13 615 087 931 ACN: 615 087 931  
 www.ethosurban.com  
 Level 8 Collins Street Melbourne  
 VIC 3000 T +61 3 9556 0962

DRAFT



JOB NO.	DWG NO.	ISSUE	DATE	DRAWN BY
3220336	A-1.6	P1	30.05.23	JB

Figure 4: Precinct Plan



No.	Precinct	Estimated Operation Year	2029	2035	2050
1	Interstate Rail	2029	✓	✓	✓
2	Cargo Link West	2030		✓	✓
3	IMEX	2033		✓	✓
4	Cargo Link East	2035		✓	✓
5	General Warehouse West	2038			✓
6	General Warehouse Central	2045			✓
7	General Warehouse East	2048			✓
8	Biodiversity Conservation Area		✓	✓	✓

Figure 5: Planning Zones

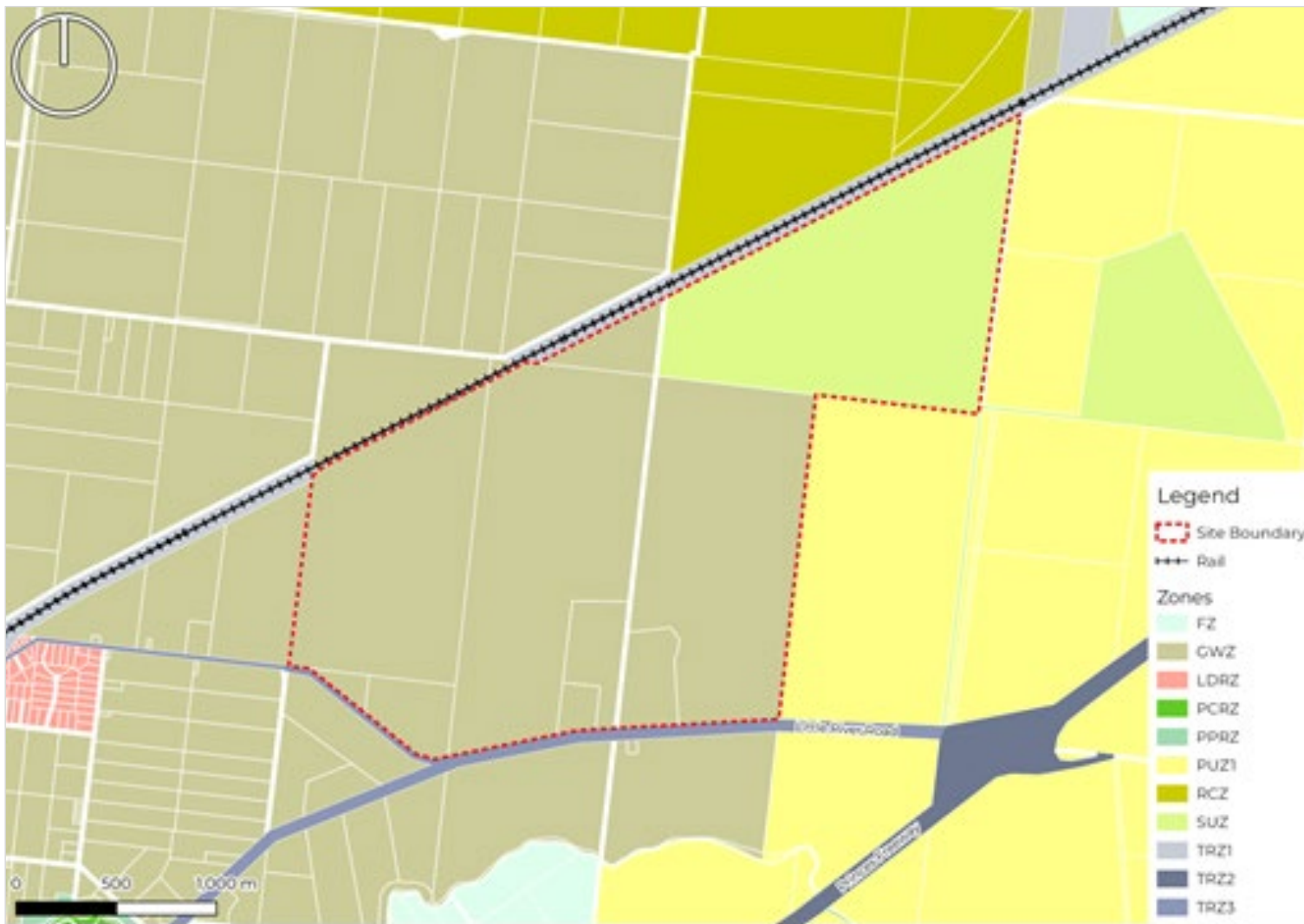


Figure 6: Planning Overlays

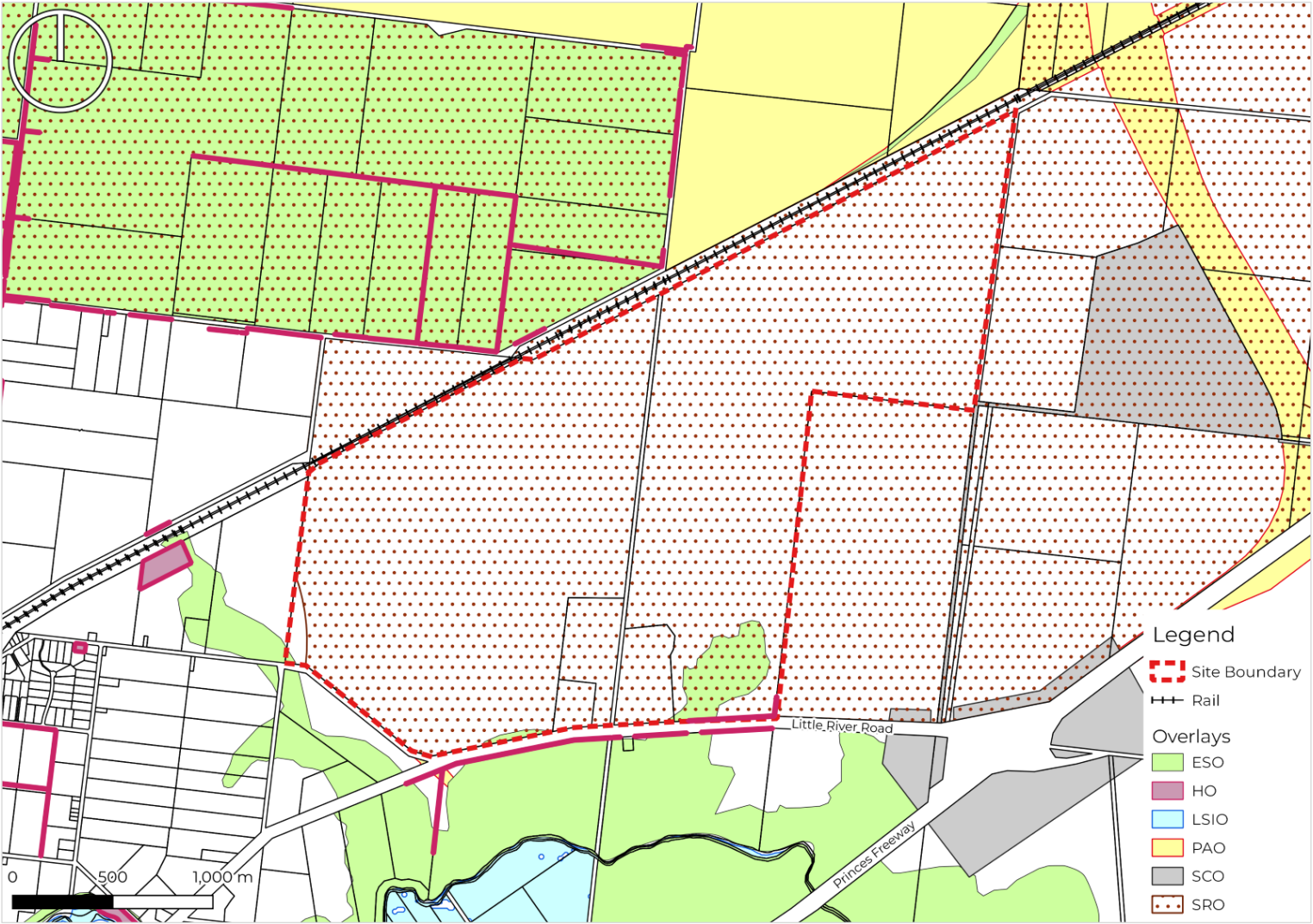
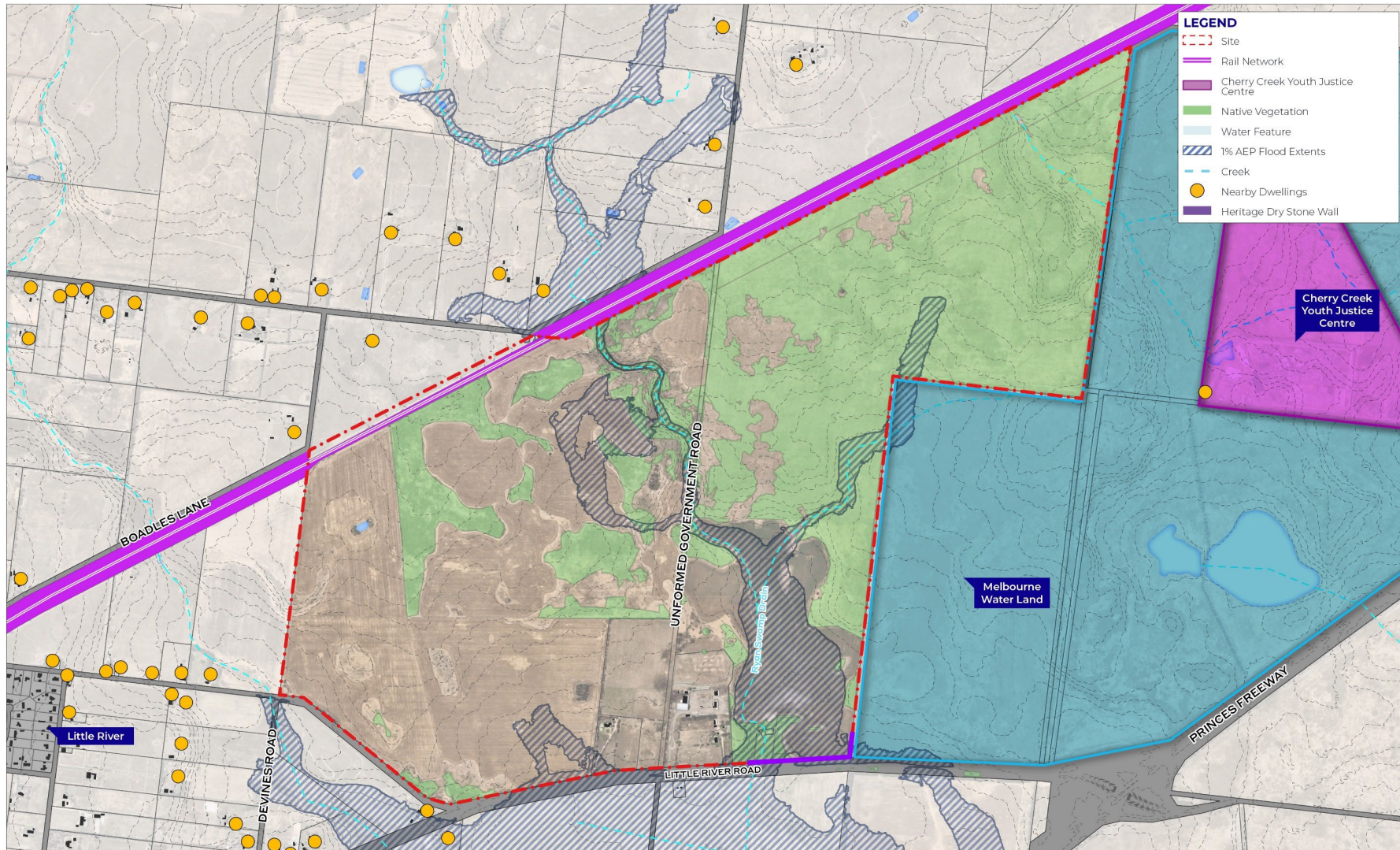


Figure 7: Site Plan



LEGEND	
<span style="border: 1px dashed red; display: inline-block; width: 10px; height: 10px;"></span>	Site
<span style="border-bottom: 2px solid purple; width: 10px; display: inline-block;"></span>	Rail Network
<span style="background-color: #e67e22; width: 10px; height: 10px; display: inline-block;"></span>	Cherry Creek Youth Justice Centre
<span style="background-color: #27ae60; width: 10px; height: 10px; display: inline-block;"></span>	Native Vegetation
<span style="background-color: #5dade2; width: 10px; height: 10px; display: inline-block;"></span>	Water Feature
<span style="background: repeating-linear-gradient(45deg, transparent, transparent 2px, blue 2px, blue 4px); width: 10px; height: 10px; display: inline-block;"></span>	1% AEP Flood Extents
<span style="border-bottom: 1px dashed blue; width: 10px; display: inline-block;"></span>	Creek
<span style="background-color: yellow; border-radius: 50%; width: 10px; height: 10px; display: inline-block;"></span>	Nearby Dwellings
<span style="background-color: purple; width: 10px; height: 10px; display: inline-block;"></span>	Heritage Dry Stone Wall

DISCLAIMER	LEGEND / NOTES	ISSUE	DATE	REVISION	REVISION BY	APPROVED BY	PROJECT	DRAWING
<p>This drawing shall only be used for the purpose for which it was commissioned. Unauthorised use of the drawings is prohibited. Do not scale this drawing. Use only figured dimensions. Report any discrepancy to the Architect or Urban Designer for clarification prior to the commencement of any work.</p>		P1	30.05.23	Draft	JM/HW	TP/GK	Little River Logistics Precinct	Site Plan
				DRAFT				A-1.3 /P1

**Ethos Urban**  
 Ethos Urban Pty. Ltd.  
 ABN 15 05 067 831 ACN 05 067 931  
 www.ethosurban.com  
 Level 11 Collins Street Melbourne  
 VIC 3000 t +61 3 9656 6962

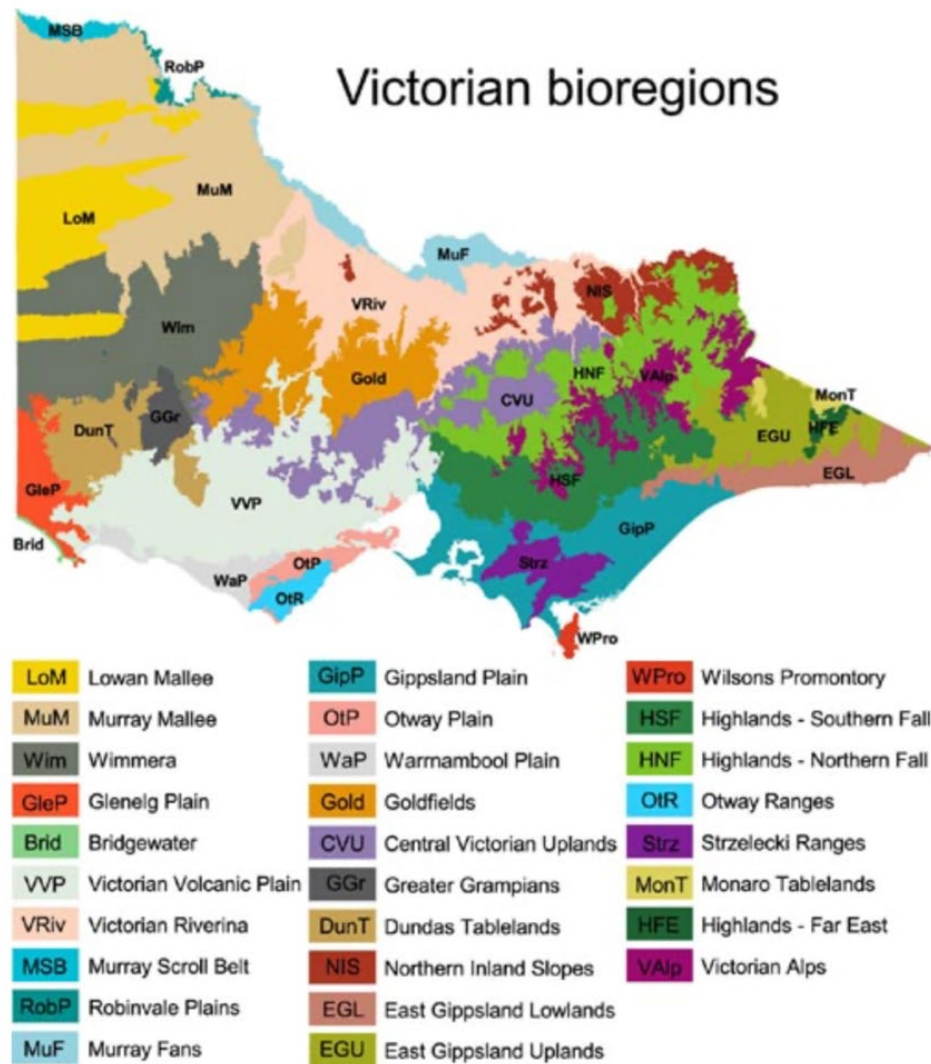
DRAFT



JOB NO.	DWG NO.	ISSUE	DATE	DRAWN BY
3220336	A-1.3	P1	30.05.23	JB

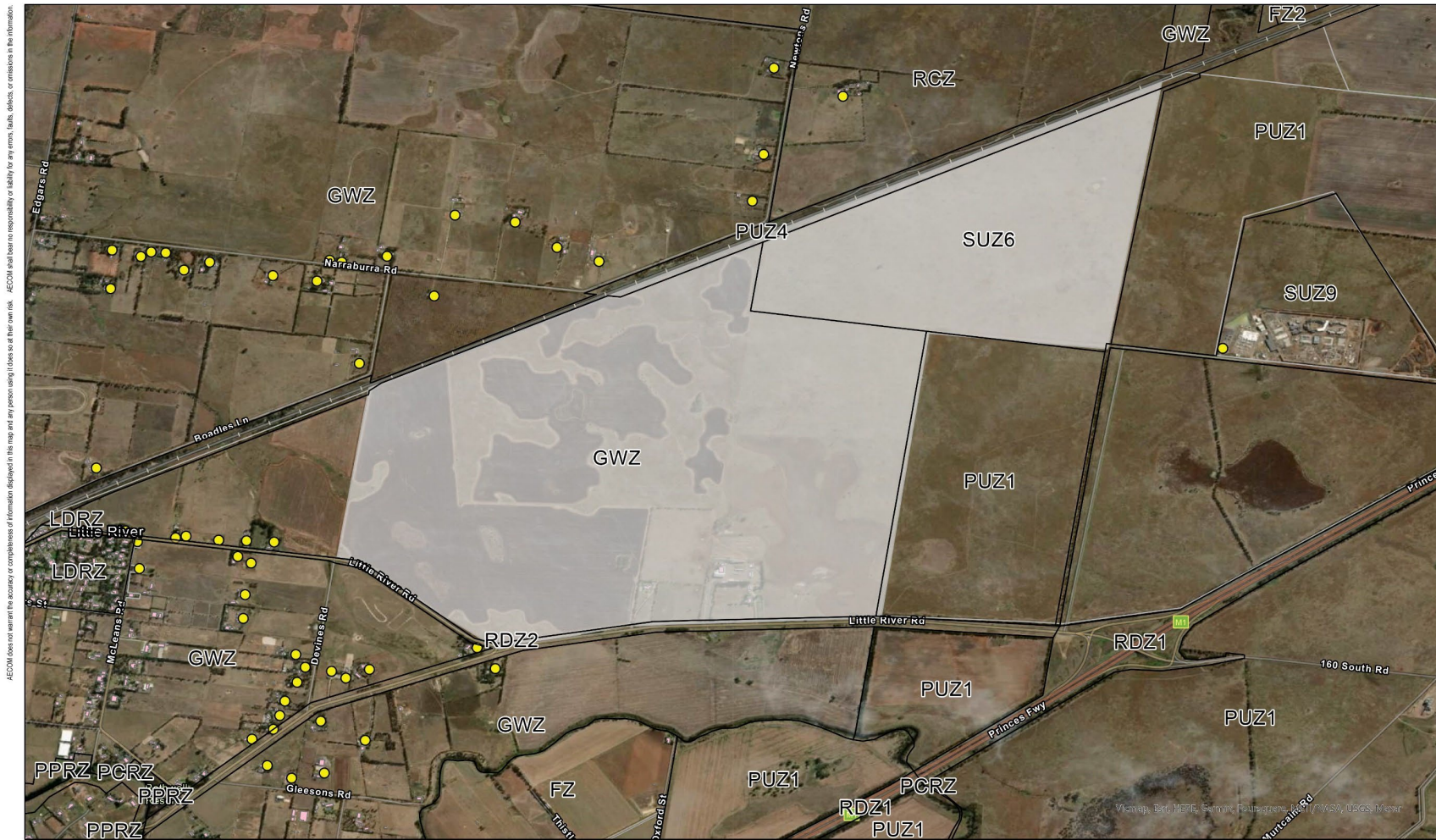


Figure 8: Victorian Bioregions



(Source: <https://www.environment.vic.gov.au/biodiversity/bioregions-and-evc-benchmarks>)

Figure 9: Sensitive Receptors



AECOM does not warrant the accuracy or completeness of information displayed in this map and any person using it does so at their own risk. AECOM shall bear no responsibility or liability for any errors, faults, defects, or omissions in the information.

PROJECT ID 60627283  
 CREATED BY LDE  
 LAST MODIFIED LDE 01 JUN 2023  
**AECOM**  
 www.aecom.com

DATUM GDA 1994, PROJECTION MGA ZONE 53  
 0 0.5 1  
 Kilometers  
 (when printed at A3)

**Legend**

- Sensitive Receptors
- Site Footprint

**SITE OVERVIEW AND ZONING**

**FIGURE 3**

A3 size

Figure 10: Tributary of Ryans Swamp Drain traversing the site

