



Legend

Development Footprint

Construction Footprint

Area of Investigation

Major Road

Waterbody

Cadastre

Local Government Areas

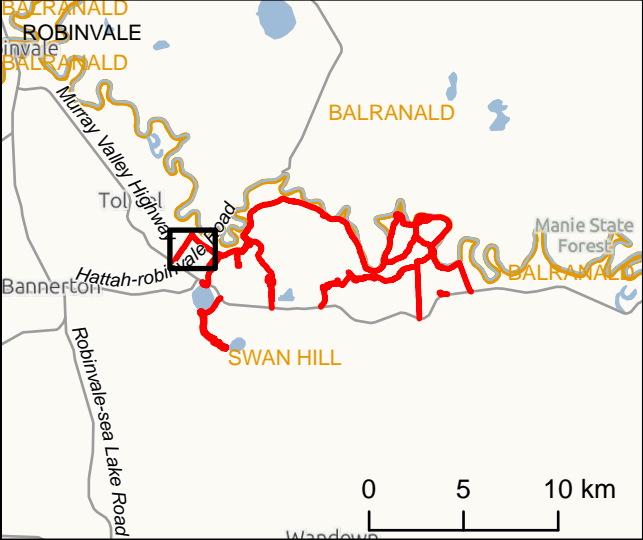
IS297792

0100200

Metres

DATA SOURCES  
© Commonwealth of Australia (Geoscience Australia) 2006 Geodata Topo 250k Series 3; Vicmap Data © State of Victoria 2019; Jacobs & GHD 2019 - 20.

COPYRIGHT: The concepts and information contained in this document are the copyright of Jacobs. Use or copying of the document in whole or in part without the written permission of Jacobs constitutes an infringement of copyright. Jacobs does not warrant that this document is definitive nor free of error and does not accept liability for any loss caused or arising from reliance upon information provided herein.







**Legend**

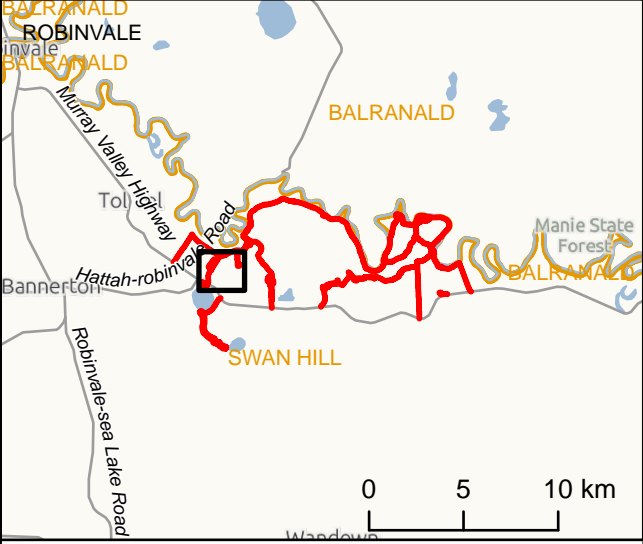
- Development Footprint
- Construction Footprint
- Area of Investigation
- Major Road
- Waterbody
- Cadastre
- Local Government Areas

IS297792

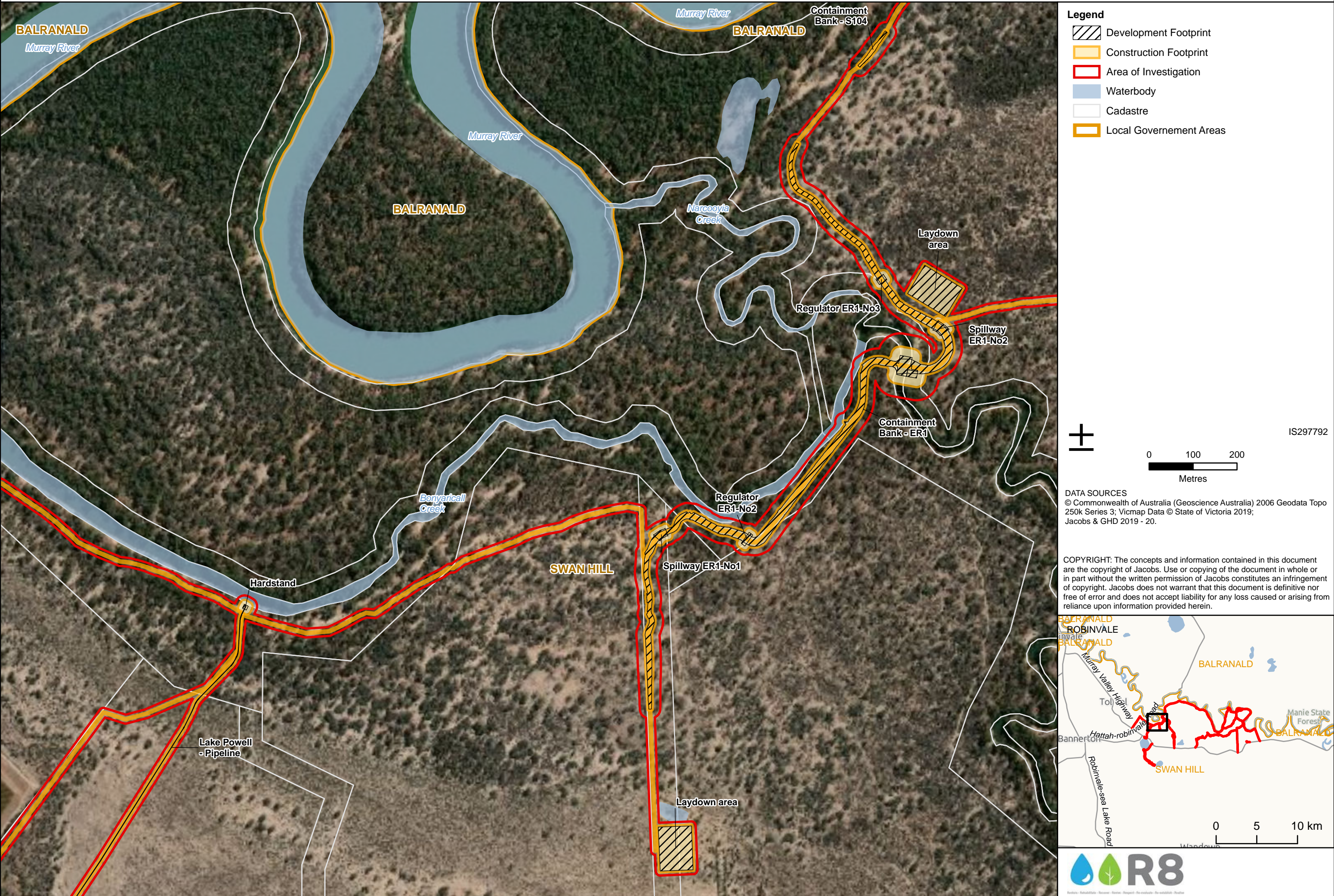
0 100 200  
Metres

**DATA SOURCES**  
© Commonwealth of Australia (Geoscience Australia) 2006 Geodata Topo 250k Series 3; Vicmap Data © State of Victoria 2019; Jacobs & GHD 2019 - 20.

**COPYRIGHT:** The concepts and information contained in this document are the copyright of Jacobs. Use or copying of the document in whole or in part without the written permission of Jacobs constitutes an infringement of copyright. Jacobs does not warrant that this document is definitive nor free of error and does not accept liability for any loss caused or arising from reliance upon information provided herein.











**Legend**

- Development Footprint
- Construction Footprint
- Area of Investigation
- Waterbody
- Cadastre
- Local Government Areas

IS297792

0 100 200  
Metres

DATA SOURCES  
© Commonwealth of Australia (Geoscience Australia) 2006 Geodata Topo 250k Series 3; Vicmap Data © State of Victoria 2019; Jacobs & GHD 2019 - 20.

COPYRIGHT: The concepts and information contained in this document are the copyright of Jacobs. Use or copying of the document in whole or in part without the written permission of Jacobs constitutes an infringement of copyright. Jacobs does not warrant that this document is definitive nor free of error and does not accept liability for any loss caused or arising from reliance upon information provided herein.

0 5 10 km





**Legend**

- Development Footprint
- Construction Footprint
- Area of Investigation
- Waterbody
- Cadastre
- Local Government Areas

±

0 100 200

Metres

IS297792

**DATA SOURCES**

© Commonwealth of Australia (Geoscience Australia) 2006 Geodata Topo 250k Series 3; Vicmap Data © State of Victoria 2019; Jacobs & GHD 2019 - 20.

**COPYRIGHT:** The concepts and information contained in this document are the copyright of Jacobs. Use or copying of the document in whole or in part without the written permission of Jacobs constitutes an infringement of copyright. Jacobs does not warrant that this document is definitive nor free of error and does not accept liability for any loss caused or arising from reliance upon information provided herein.

0 5 10 km





**Legend**

- Development Footprint
- Construction Footprint
- Area of Investigation
- Major Road
- Waterbody
- Cadastre
- Local Government Areas

±

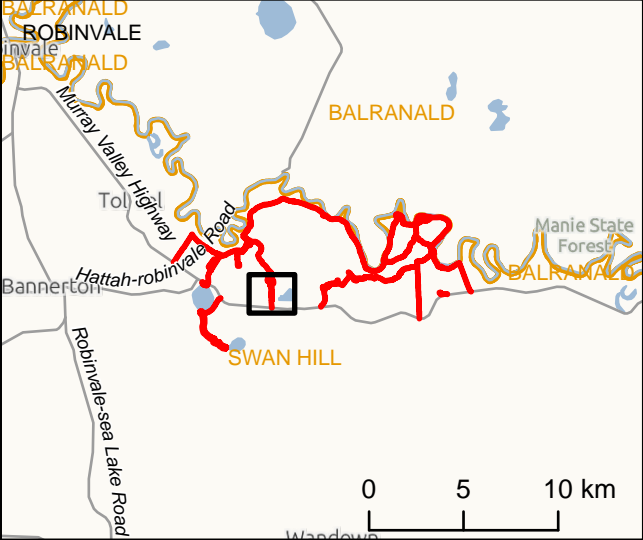
IS297792

0 100 200

Metres

**DATA SOURCES**  
© Commonwealth of Australia (Geoscience Australia) 2006 Geodata Topo 250k Series 3; Vicmap Data © State of Victoria 2019; Jacobs & GHD 2019 - 20.

**COPYRIGHT:** The concepts and information contained in this document are the copyright of Jacobs. Use or copying of the document in whole or in part without the written permission of Jacobs constitutes an infringement of copyright. Jacobs does not warrant that this document is definitive nor free of error and does not accept liability for any loss caused or arising from reliance upon information provided herein.







**Legend**

- Development Footprint
- Construction Footprint
- Area of Investigation
- Waterbody
- Cadastre
- Local Government Areas

IS297792

0 100 200  
Metres

**DATA SOURCES**  
© Commonwealth of Australia (Geoscience Australia) 2006 Geodata Topo 250k Series 3; Vicmap Data © State of Victoria 2019; Jacobs & GHD 2019 - 20.

**COPYRIGHT:** The concepts and information contained in this document are the copyright of Jacobs. Use or copying of the document in whole or in part without the written permission of Jacobs constitutes an infringement of copyright. Jacobs does not warrant that this document is definitive nor free of error and does not accept liability for any loss caused or arising from reliance upon information provided herein.

0 5 10 km





**Legend**

- Development Footprint
- Construction Footprint
- Area of Investigation
- Waterbody
- Cadastre
- Local Government Areas

±

0 100 200

Metres

IS297792

DATA SOURCES

© Commonwealth of Australia (Geoscience Australia) 2006 Geodata Topo 250k Series 3; Vicmap Data © State of Victoria 2019; Jacobs & GHD 2019 - 20.

COPYRIGHT: The concepts and information contained in this document are the copyright of Jacobs. Use or copying of the document in whole or in part without the written permission of Jacobs constitutes an infringement of copyright. Jacobs does not warrant that this document is definitive nor free of error and does not accept liability for any loss caused or arising from reliance upon information provided herein.

0 5 10 km





**Legend**

- Development Footprint
- Construction Footprint
- Area of Investigation
- Waterbody
- Cadastre
- Local Government Areas

±

0 100 200

Metres

IS297792

DATA SOURCES

© Commonwealth of Australia (Geoscience Australia) 2006 Geodata Topo 250k Series 3; Vicmap Data © State of Victoria 2019; Jacobs & GHD 2019 - 20.

COPYRIGHT: The concepts and information contained in this document are the copyright of Jacobs. Use or copying of the document in whole or in part without the written permission of Jacobs constitutes an infringement of copyright. Jacobs does not warrant that this document is definitive nor free of error and does not accept liability for any loss caused or arising from reliance upon information provided herein.

Inset map showing the location of the study area (highlighted in red) within the Murray Valley region. The map includes labels for Balranald, Swan Hill, Robinvale, and the Murray Valley Highway. A scale bar indicates 0, 5, and 10 km.

The logo for R8, featuring a blue water drop and a green leaf icon next to the text 'R8'.





**Legend**

- Development Footprint
- Construction Footprint
- Area of Investigation
- Waterbody
- Cadastre
- Local Government Areas

±

0 100 200

Metres

IS297792

**DATA SOURCES**

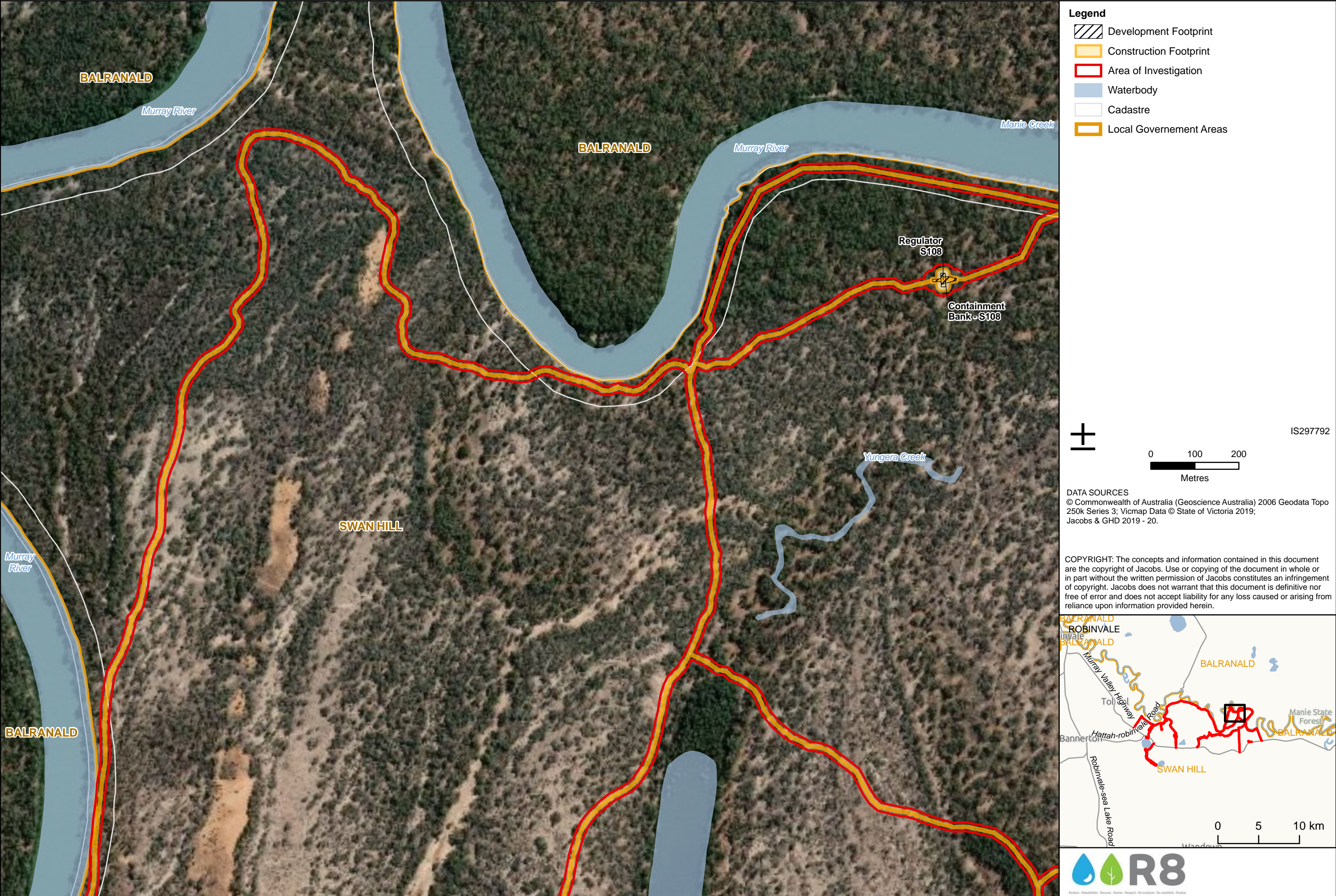
© Commonwealth of Australia (Geoscience Australia) 2006 Geodata Topo 250k Series 3; Vicmap Data © State of Victoria 2019; Jacobs & GHD 2019 - 20.

**COPYRIGHT:** The concepts and information contained in this document are the copyright of Jacobs. Use or copying of the document in whole or in part without the written permission of Jacobs constitutes an infringement of copyright. Jacobs does not warrant that this document is definitive nor free of error and does not accept liability for any loss caused or arising from reliance upon information provided herein.

Inset map showing the location of the study area within the larger region of Victoria, Australia. The map highlights the Murray River, Balranald, Swan Hill, and the project area. Key roads like the Murray Valley Highway and Hattah-Robinvale Road are shown. A scale bar indicates 0, 5, and 10 km.

The logo for R8, featuring a stylized blue and green leaf-like shape next to the letters 'R8'.









**Legend**

- Development Footprint
- Construction Footprint
- Area of Investigation
- Waterbody
- Cadastre
- Local Government Areas

±

0 100 200

Metres

IS297792

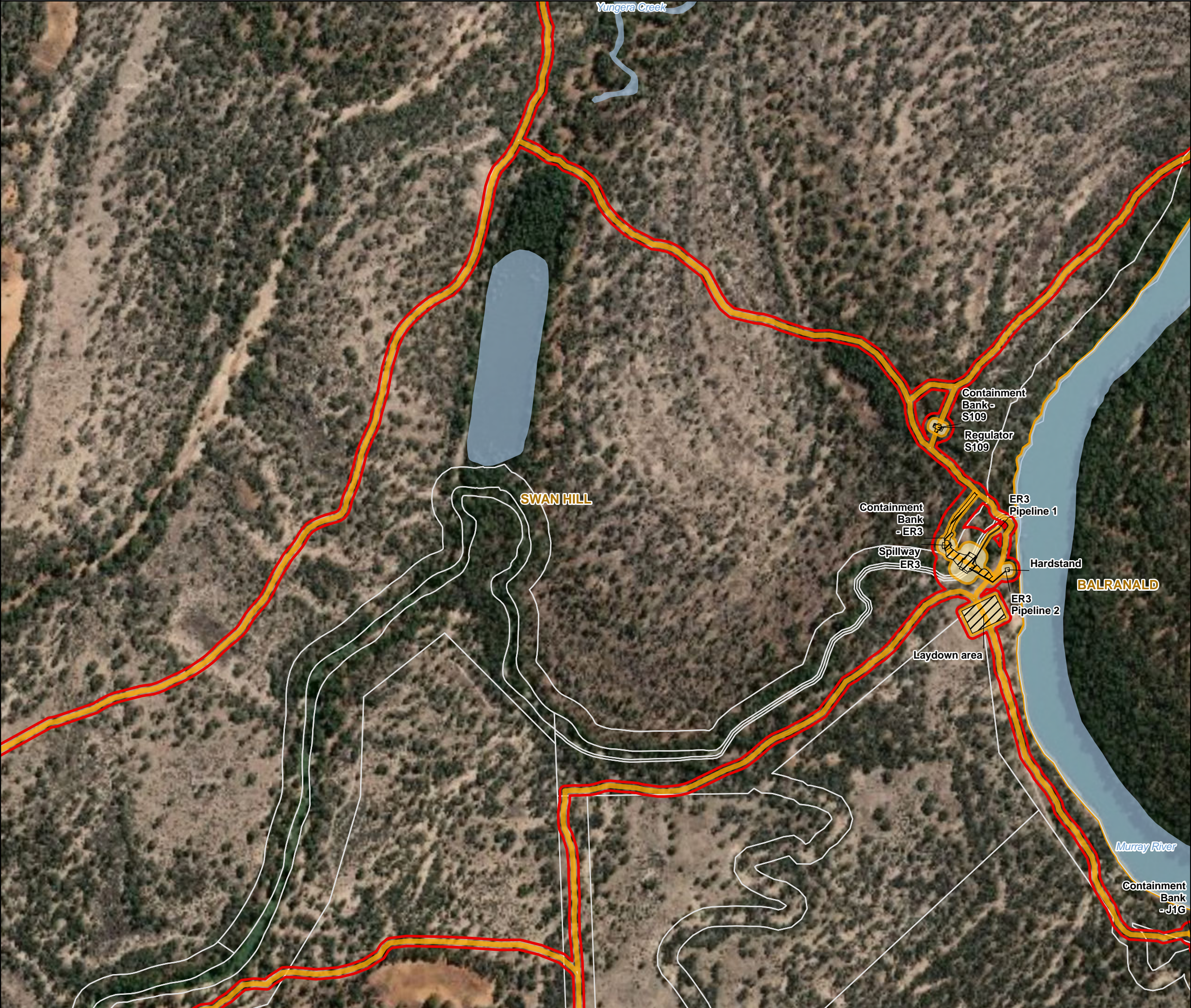
**DATA SOURCES**

© Commonwealth of Australia (Geoscience Australia) 2006 Geodata Topo 250k Series 3; Vicmap Data © State of Victoria 2019; Jacobs & GHD 2019 - 20.

**COPYRIGHT:** The concepts and information contained in this document are the copyright of Jacobs. Use or copying of the document in whole or in part without the written permission of Jacobs constitutes an infringement of copyright. Jacobs does not warrant that this document is definitive nor free of error and does not accept liability for any loss caused or arising from reliance upon information provided herein.

0 5 10 km





**Legend**

- Development Footprint
- Construction Footprint
- Area of Investigation
- Waterbody
- Cadastre
- Local Government Areas

IS297792

0 100 200 Metres

DATA SOURCES  
© Commonwealth of Australia (Geoscience Australia) 2006 Geodata Topo 250k Series 3; Vicmap Data © State of Victoria 2019; Jacobs & GHD 2019 - 20.

COPYRIGHT: The concepts and information contained in this document are the copyright of Jacobs. Use or copying of the document in whole or in part without the written permission of Jacobs constitutes an infringement of copyright. Jacobs does not warrant that this document is definitive nor free of error and does not accept liability for any loss caused or arising from reliance upon information provided herein.





**Legend**

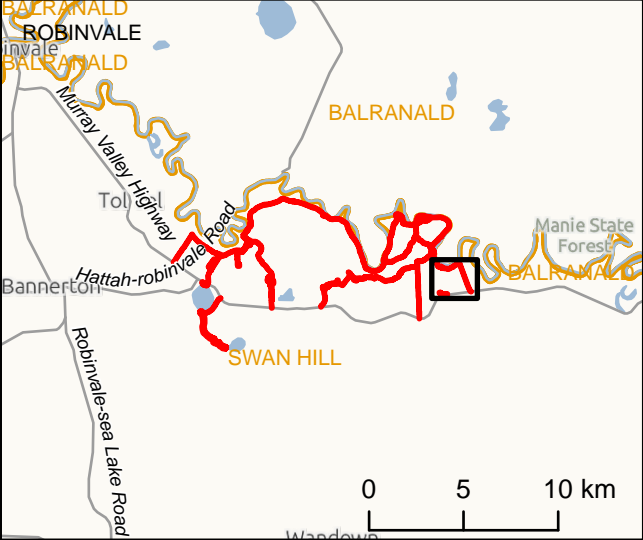
- Development Footprint
- Construction Footprint
- Area of Investigation
- Major Road
- Waterbody
- Cadastre
- Local Government Areas

IS297792

0 100 200  
Metres

**DATA SOURCES**  
© Commonwealth of Australia (Geoscience Australia) 2006 Geodata Topo 250k Series 3; Vicmap Data © State of Victoria 2019; Jacobs & GHD 2019 - 20.

**COPYRIGHT:** The concepts and information contained in this document are the copyright of Jacobs. Use or copying of the document in whole or in part without the written permission of Jacobs constitutes an infringement of copyright. Jacobs does not warrant that this document is definitive nor free of error and does not accept liability for any loss caused or arising from reliance upon information provided herein.







**Legend**

- Development Footprint
- Construction Footprint
- Area of Investigation
- Waterbody
- Cadastral
- Local Government Areas

±

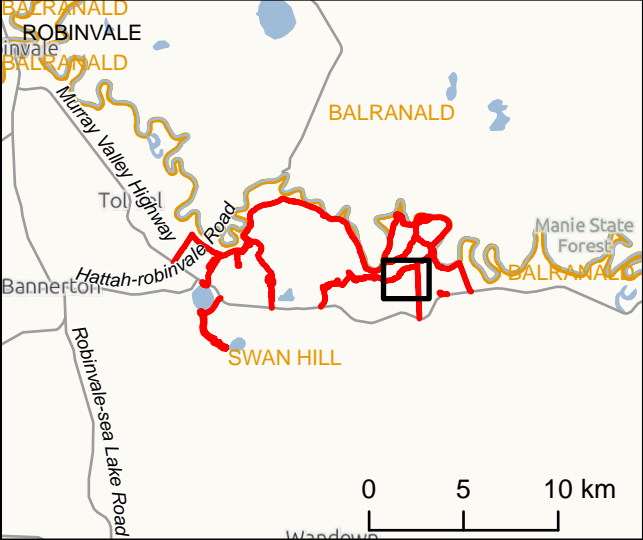
0 100 200

Metres

IS297792

**DATA SOURCES**  
© Commonwealth of Australia (Geoscience Australia) 2006 Geodata Topo 250k Series 3; Vicmap Data © State of Victoria 2019; Jacobs & GHD 2019 - 20.

**COPYRIGHT:** The concepts and information contained in this document are the copyright of Jacobs. Use or copying of the document in whole or in part without the written permission of Jacobs constitutes an infringement of copyright. Jacobs does not warrant that this document is definitive nor free of error and does not accept liability for any loss caused or arising from reliance upon information provided herein.







**Legend**

- Development Footprint
- Construction Footprint
- Area of Investigation
- Major Road
- Waterbody
- Cadastre
- Local Government Areas

±

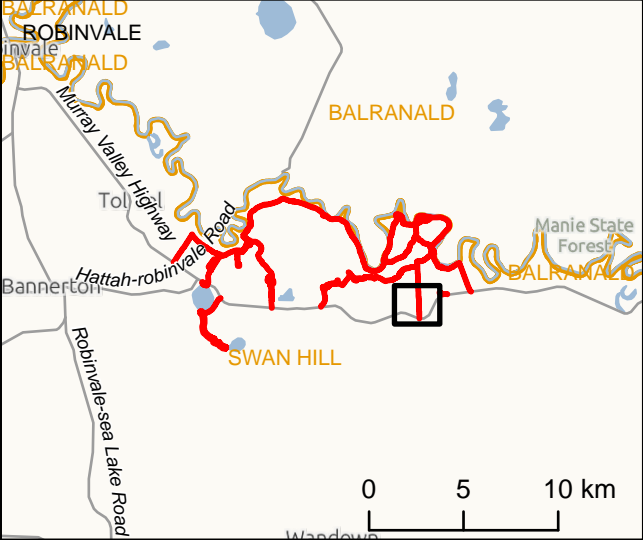
IS297792

0 100 200

Metres

**DATA SOURCES**  
© Commonwealth of Australia (Geoscience Australia) 2006 Geodata Topo 250k Series 3; Vicmap Data © State of Victoria 2019; Jacobs & GHD 2019 - 20.

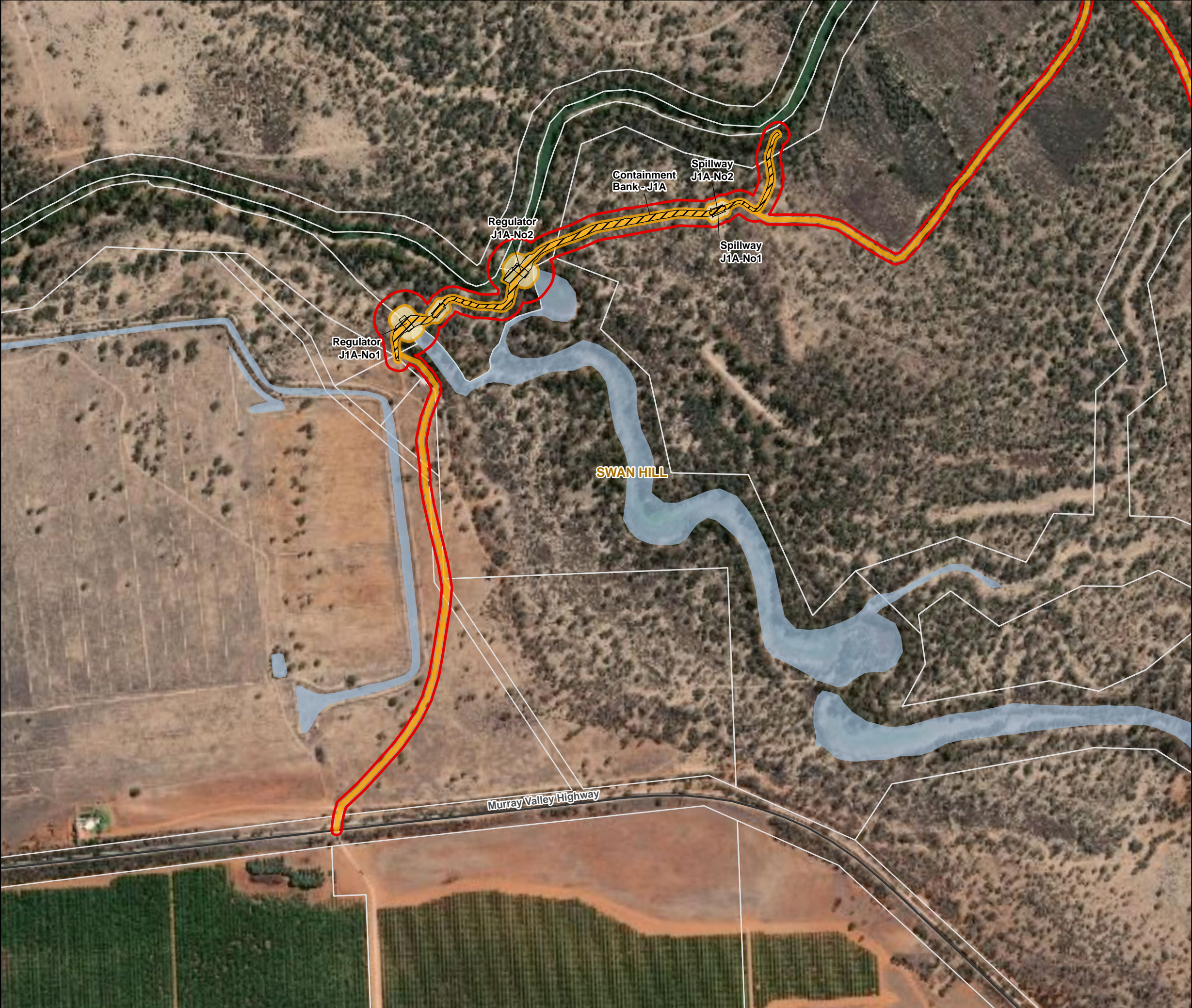
**COPYRIGHT:** The concepts and information contained in this document are the copyright of Jacobs. Use or copying of the document in whole or in part without the written permission of Jacobs constitutes an infringement of copyright. Jacobs does not warrant that this document is definitive nor free of error and does not accept liability for any loss caused or arising from reliance upon information provided herein.











**Legend**

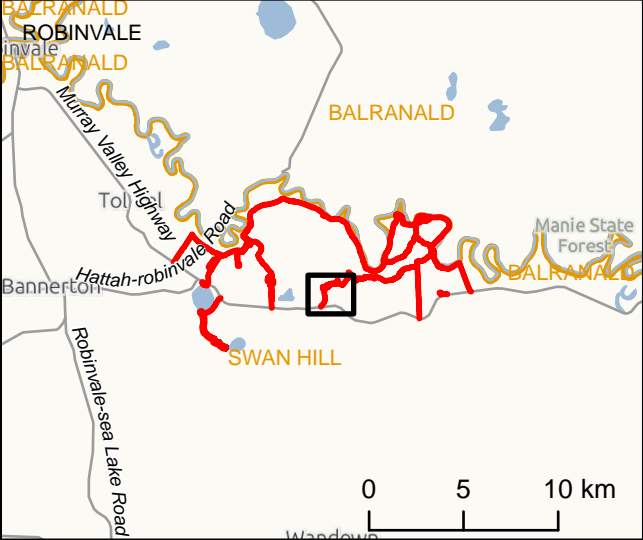
- Development Footprint
- Construction Footprint
- Area of Investigation
- Major Road
- Waterbody
- Cadastre
- Local Government Areas

IS297792

0 100 200  
Metres

**DATA SOURCES**  
© Commonwealth of Australia (Geoscience Australia) 2006 Geodata Topo 250k Series 3; Vicmap Data © State of Victoria 2019; Jacobs & GHD 2019 - 20.

**COPYRIGHT:** The concepts and information contained in this document are the copyright of Jacobs. Use or copying of the document in whole or in part without the written permission of Jacobs constitutes an infringement of copyright. Jacobs does not warrant that this document is definitive nor free of error and does not accept liability for any loss caused or arising from reliance upon information provided herein.







**Legend**

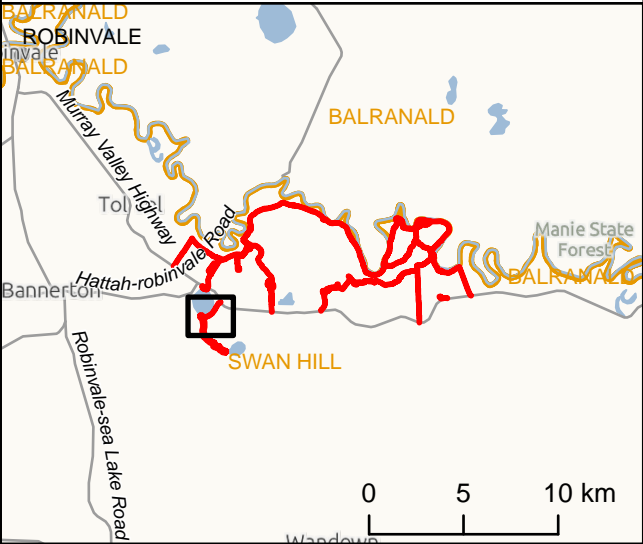
- Development Footprint
- Construction Footprint
- Area of Investigation
- Major Road
- Waterbody
- Cadastre
- Local Government Areas

IS297792

0 100 200  
Metres

DATA SOURCES  
© Commonwealth of Australia (Geoscience Australia) 2006 Geodata Topo 250k Series 3; Vicmap Data © State of Victoria 2019; Jacobs & GHD 2019 - 20.

COPYRIGHT: The concepts and information contained in this document are the copyright of Jacobs. Use or copying of the document in whole or in part without the written permission of Jacobs constitutes an infringement of copyright. Jacobs does not warrant that this document is definitive nor free of error and does not accept liability for any loss caused or arising from reliance upon information provided herein.







**Legend**

- Area of Investigation
- Waterbody
- Cadastre
- Local Government Areas

±

0 100 200

Metres

IS297792

DATA SOURCES

© Commonwealth of Australia (Geoscience Australia) 2006 Geodata Topo 250k Series 3; Vicmap Data © State of Victoria 2019; Jacobs & GHD 2019 - 20.

COPYRIGHT: The concepts and information contained in this document are the copyright of Jacobs. Use or copying of the document in whole or in part without the written permission of Jacobs constitutes an infringement of copyright. Jacobs does not warrant that this document is definitive nor free of error and does not accept liability for any loss caused or arising from reliance upon information provided herein.