

Character Area 2.10  
**Valley Views**

## 2.10 VALLEY VIEWS

This Character Area lies at the interface between the Uplands and Western Volcanic Plain Character Types.

The area is mostly cleared, undulating to hilly and incised by the valleys of Mount Misery Creek, Naringhil Creek and Woody Yaloak River. Stands of native vegetation remain in some locations, and the spread of weed species is prolific.

A vegetated horizon line is common when adjacent to State Parks or reserves, and the distinctive humped shape of Mount Emu is visible on the horizon to the north of the area. Development is fairly sparse and consists of modest farm houses and associated outbuildings.

### Key Features

- Mostly cleared
- Native roadside vegetation
- River valleys

### Settlements

- Rokewood Junction
- Illabarook
- Dereel



*Cleared undulating hills*



*Eroded creek valleys with views towards Enfield State Park*

Figure 1 Valley Views Overview

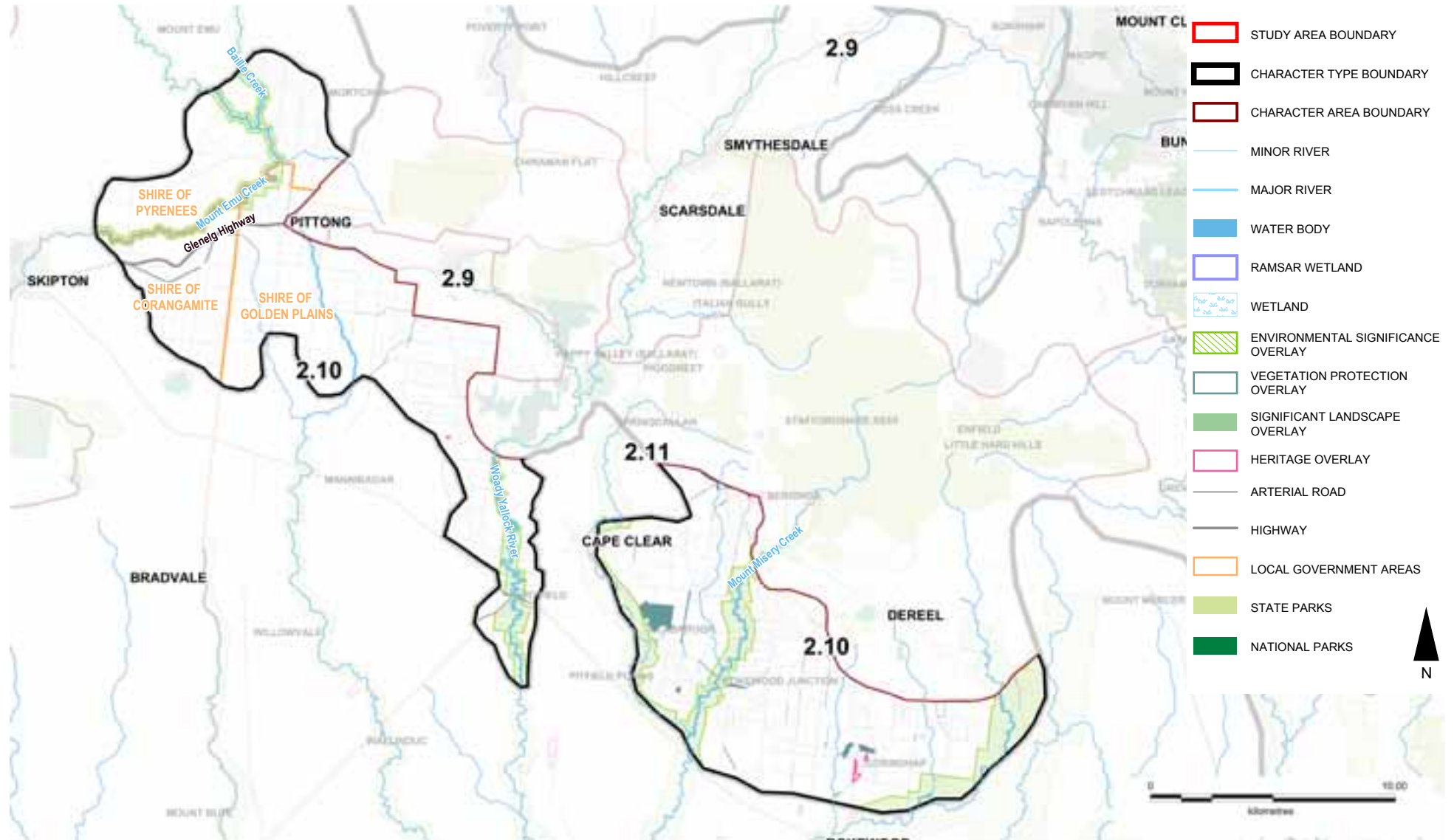


Figure 2 Valley Views Landform

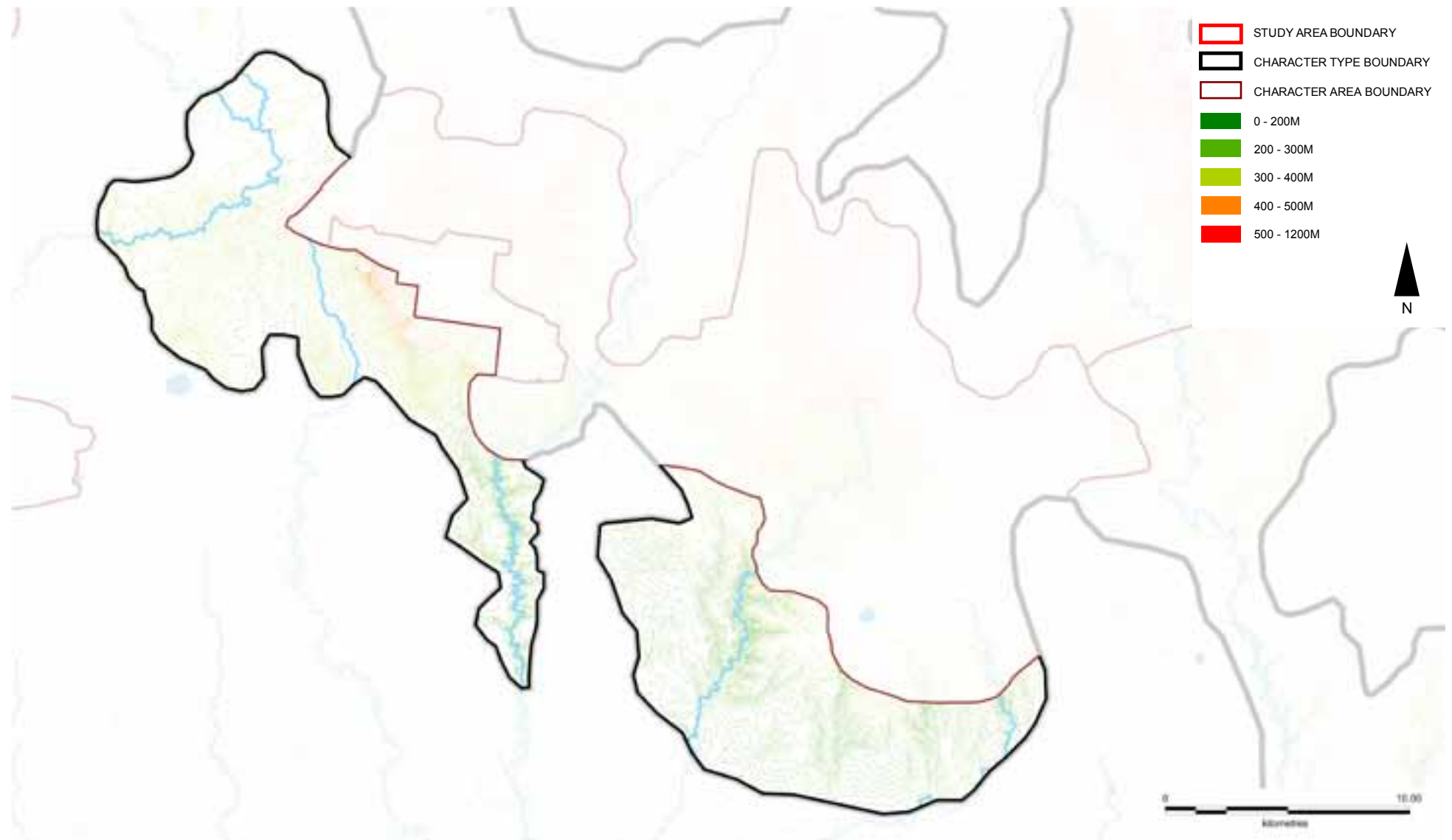
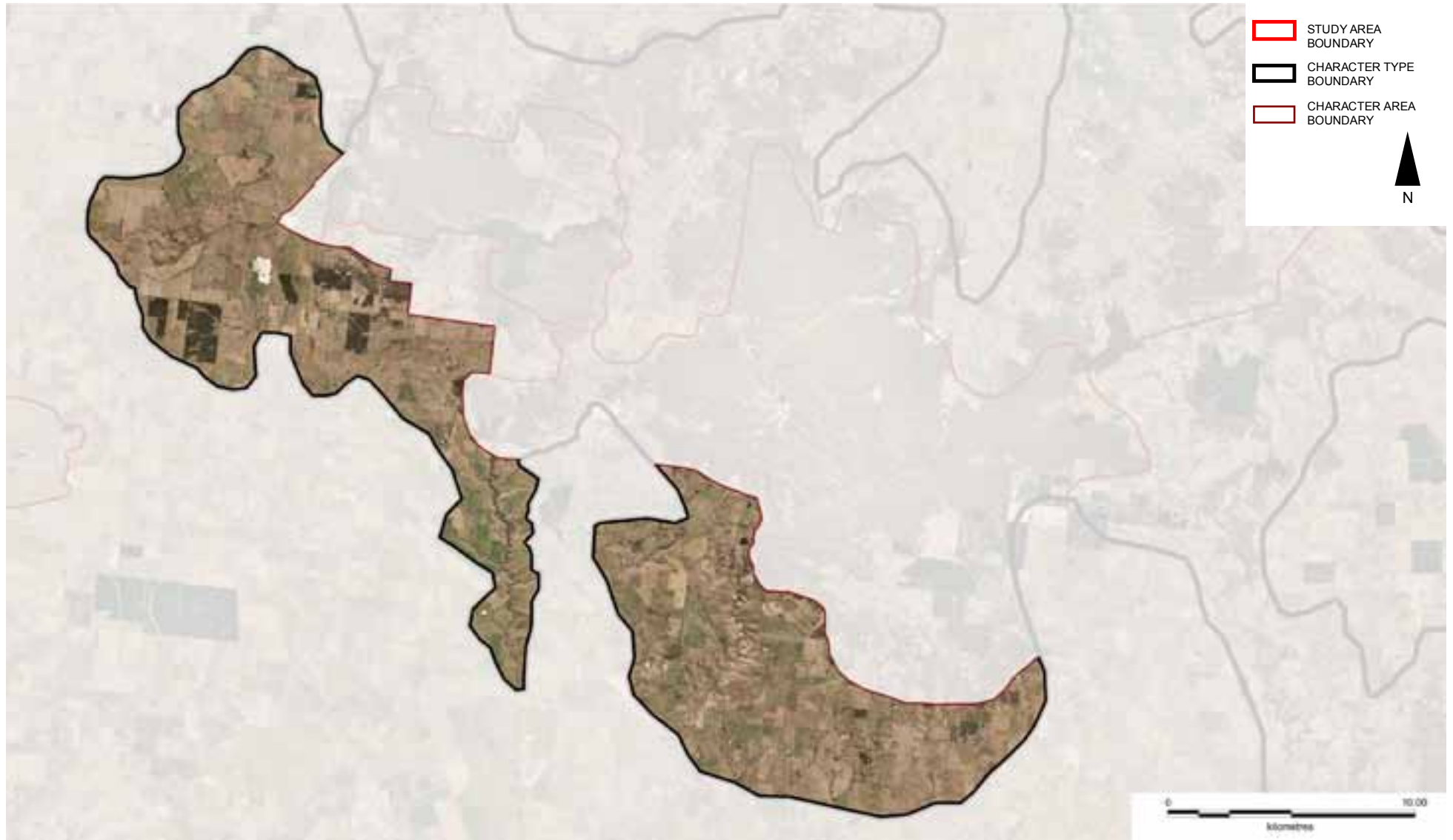


Figure 3 Valley Views Aerial



## PATTERN OF VIEWING

The main viewing corridors for this Character Area are:

- Glenelg Highway
- Dereel - Rokewood Junction Road
- Colac - Ballarat Road
- Cape Clear - Rokewood Road
- Linton - Mannibadar Road
- Berringa Road

Views in the Character Area are long ranging over cleared pastoral land. Views to the north terminate in the wooded backdrop of the forested uplands, and views south extend across the volcanic plain.

The rivers and creeks that have shaped this landscape are not highly visible from the viewing corridors, rather it is the smooth incised valleys that can be seen slicing through the landscape.

Along the Glenelg Highway views are often screened by roadside vegetation.



*Looking west from the Linton - Mannibadar Road over the cleared pastoral landscape*



*Looking east from Berringa Road towards the Misery Creek Valley*



*Roadside vegetation screens views from the Glenelg Highway*



*Views towards Mount Emu from the Pittong - Snake Valley Road*



*Panoramic views west from the Dereel - Rokewood Junction Road over cleared valleys and towards the Enfield State Park*



*Views east over river valleys and cleared pastoral land towards the Enfield State Park from the Linton - Naringhil Rd*

# LANDSCAPE VALUES

---

## Historic

- Mining remains, discovered underneath the forest understorey after a controlled burn
  - round shafts of Chinese mines
  - square shafts of European mines

## Environmental/Scientific

- Protected areas on the IUCN list
  - Corindhap & Illabrook Rail Line Nature Conservation Reserves & Commeralghip & Illabarook Grassland Flora Reserves, Category IA (Strict Nature Reserve)
  - Mount Bute Scenic Reserve, Category III (Natural Monument or Feature)
  - Dereel H25 Bushland Reserve, Category IV (Habitat/Species Management Area)



# LANDSCAPE PROTECTION & MANAGEMENT

---

## Planning Scheme Policies & Controls

This Character Area is subject to the Corangamite Planning Scheme.

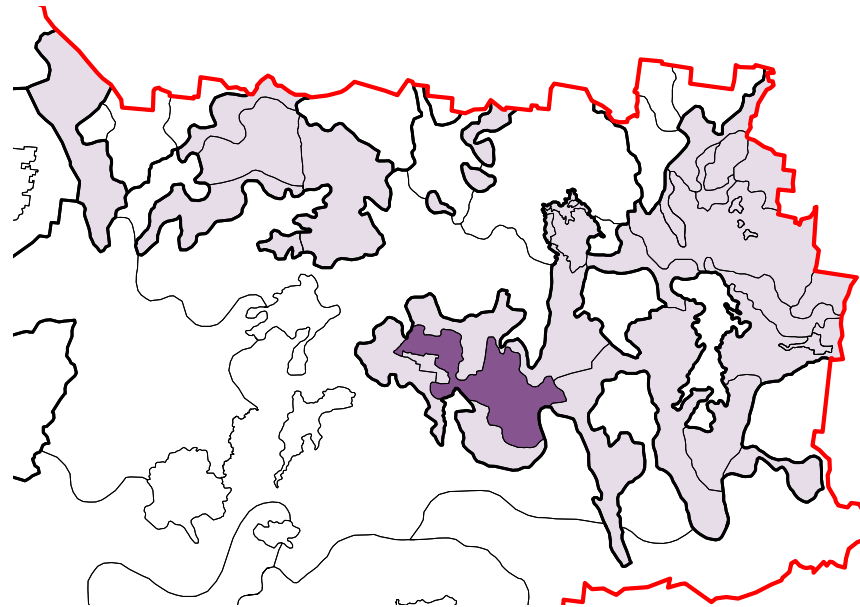
### Key Zones

- FZ
- PCRZ (Golden Plains only)
- RLZ at Berringa, Happy Valley, Illabarook
- RCZ1 (Golden Plains only)

### Key Overlays

- Golden Plains ESO2: Watercourse Protection
- Golden Plains ESO3: Mount Misery Creek, Surface Hill – Smythesdale, Klein & Swanston Road Area, Dereel, Swamp Road – Dereel, Yarrowee Creek, Teesdale Reserve, Moorabool Valley, Sutherland Creek, Meredith, Steiglitz
- Pyrenees ESO2: Watercourse Protection
- Golden Plains HO107, HO124, HO129: Former Berringa State School & Homesteads
- Corangamite VPO2: Roadside Vegetation Protection Area
- Golden Plains VPO2: Bushland Reserves & Roadside Vegetation Areas
- WMO / BMO
- Golden Plains LSIO
- Golden Plains SMO
- Golden Plains DDO7: Rural Living Zone Outbuildings & Sheds
- Golden Plains RO1: Illabarook Environs
- Pyrenees RO19: Former Crown Township of Chepstowe & Baillies Creek Environs





Character Area 2.11

## Central Forested Uplands

## 2.11 CENTRAL FORESTED UPLANDS

The Central Forested Uplands Character Area is typified by State Forests which are interspersed with farming, plantations and residential settlements.

The forest is dense with a thick understory of bracken. Tree patterns include thin trunks characteristic of coppiced regrowth that has occurred after the original vegetation was cleared for timber. In some locations the forest is dense with no other land uses, in other locations the forest breaks down and becomes interspersed with patches of residential, plantations, areas of cropping and cleared paddocks.

Plantations have created vast areas of scarring on some parts of the landscape. This Character Area contains the Devil's Kitchen gorge, an old gold mine, and state forests include the Enfield State Park and Berringa, Ross Creek and Linton/Widwid State forests.

### Key Features

- Thickly vegetated
- Numerous State Forests
- Residential/farming interface
- Plantations
- Mining relics
- Devil's Kitchen

### Settlements

- Piggoreet
- Dereel



*View towards the Berringa State Forest over cleared agricultural land*



*View from within Enfield State Park*

Figure 1 Central Forested Uplands Overview

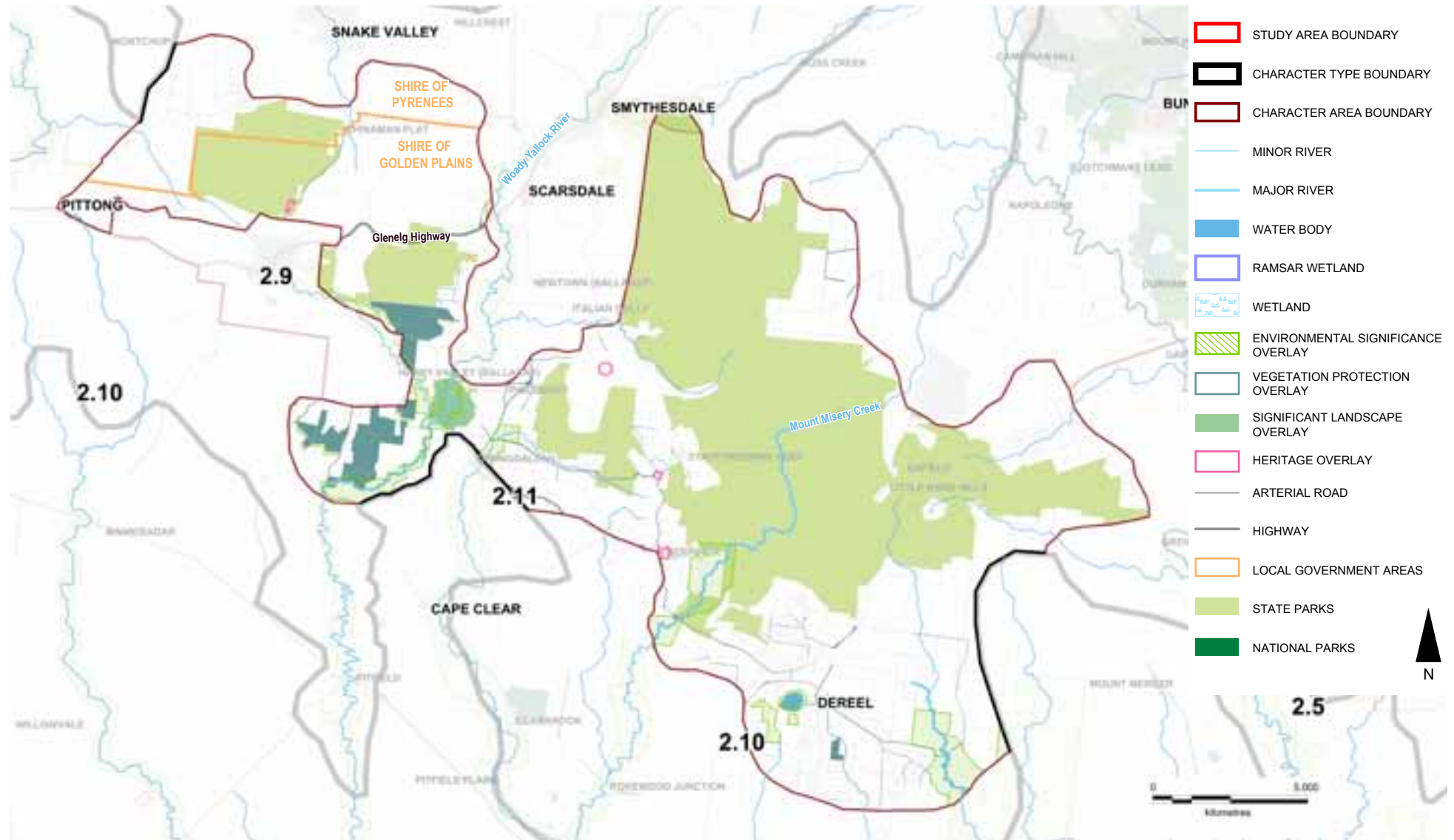


Figure 2 Central Forested Uplands Landform

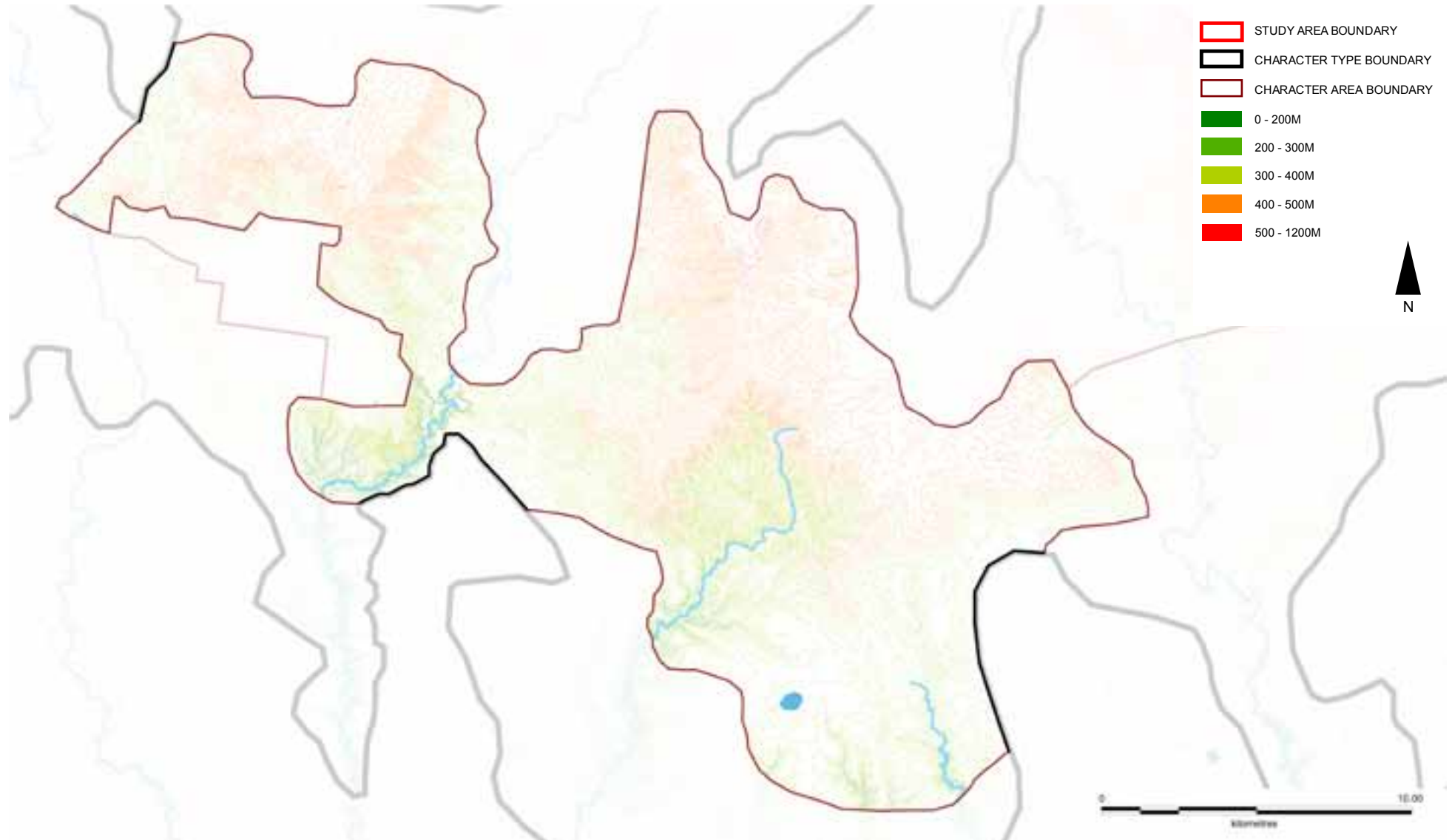
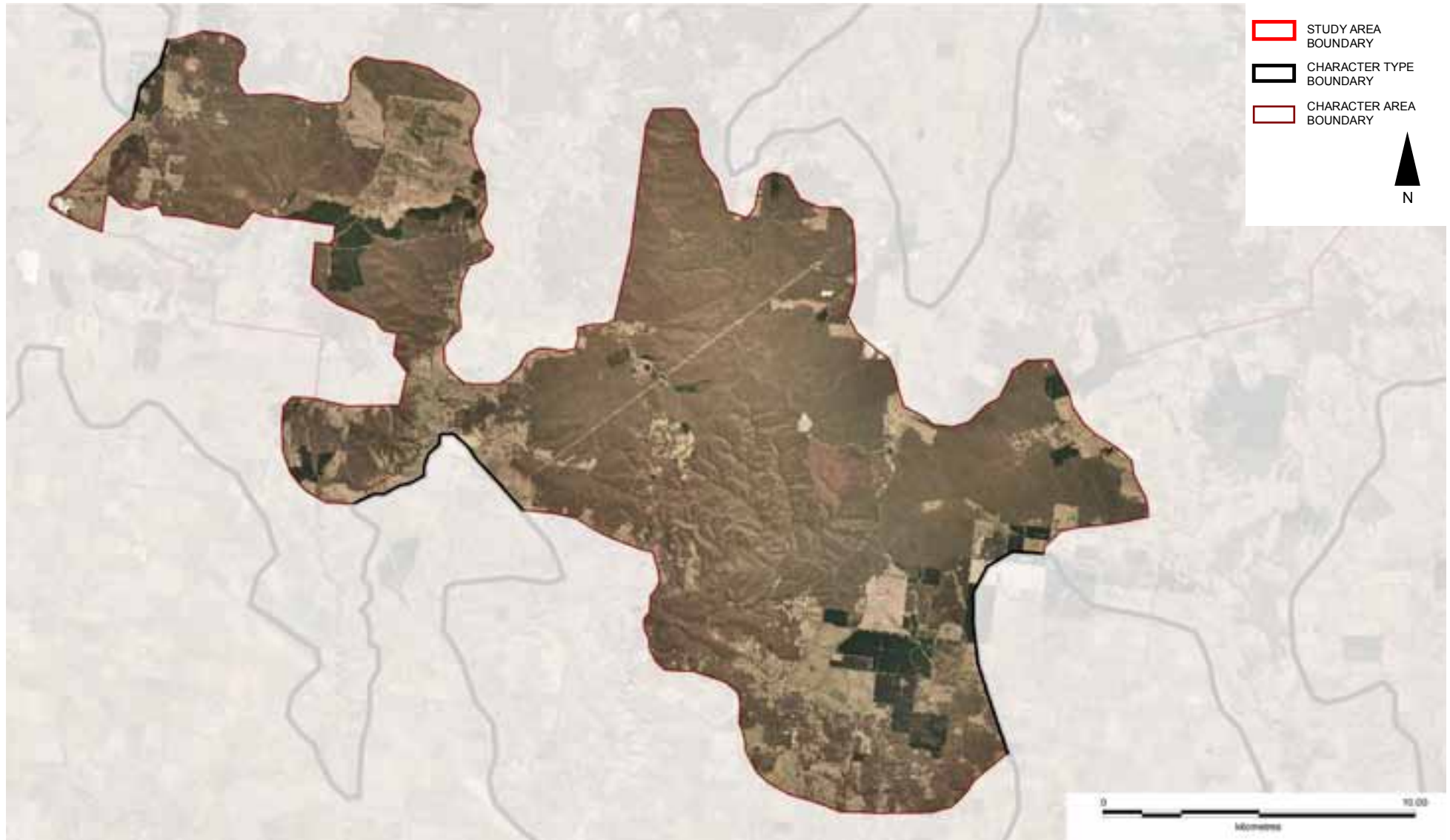


Figure 3 Central Forested Uplands Aerial



## PATTERN OF VIEWING

---

The main viewing corridors for this Character Area are:

- Glenelg Highway
- Ballarat-Colac Road
- Newtown-Berringa Road
- Pitfield Road

Views of this Character Area change as the landscape is traversed: from narrow views contained by thick vegetation within the forests, to long ranging views over cleared paddocks terminating at a forested backdrop.



*Narrow views on the Glenelg Highway as it passes through the Widwid State Forest*



*Views over cleared landscape towards hills covered in forest and pine plantation*





*View towards the Devil's Kitchen from the Linton - Piggoreet Road*



*Gold mining relics from the 1850's are visible from the Linton - Piggoreet Road*

# LANDSCAPE VALUES

---

## Historic

- Mining remains, discovered underneath the forest understorey after a controlled burn
  - round shafts of Chinese mines
  - square shafts of European mines

## Environmental/Scientific

- Enfield State Park
  - protected area on the IUCN list Category II (National Park)
  - protected by National Parks Act 1975, Schedule 2B
- Protected areas on the IUCN list
  - Dereel Lagoon Wildlife Reserve, Linton Flora & Fauna Reserve & Mount Erip Flora Reserve, Category IA (Strict Nature Reserve)
  - Karuc-a-ruc Creek & Happy Valley Crossing Streamside Reserves, Category II (Natural Monument or Feature)
  - Devils Kitchen Geological Reserve, Category III (Natural Monument or Feature)
  - Clarksdale H22 & H23 & Dereel H24, H26, H27 & H28 Bushland Reserves, Category IV (Habitat/Species Management Area)

# LANDSCAPE PROTECTION & MANAGEMENT

---

## Planning Scheme Policies & Controls

This Character Area is subject to the Golden Plains and Pyrenees Planning Schemes.

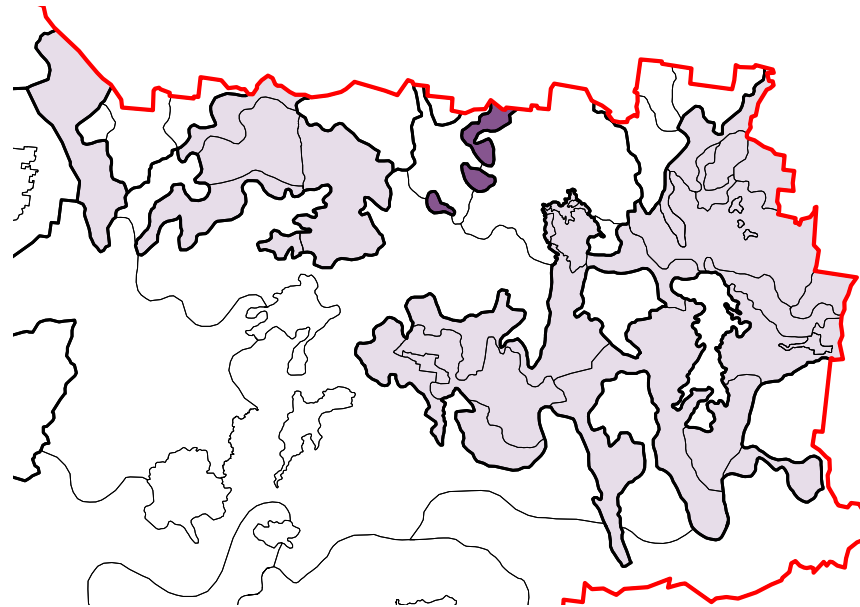
### Key Zones

- FZ
- PCRZ
- RLZ at Berringa, Dereel, Garibaldi, Happy Valley, Linton, Napoleons, Scarsdale, Snake Valley, Staffordshire Reef
- RAZ1 (Golden Plains only)

### Key Overlays

- Golden Plains SLO1: Devils Kitchen
- Golden Plains ESO2: Watercourse Protection
- Golden Plains ESO3: Mt Misery Creek, Surface Hill – Smythesdale, Klein & Swanston Road Area, Dereel, Swamp Road – Dereel, Yarrowee Creek, Teesdale Reserve, Moorabool Valley, Sutherland Creek, Meredith, Steiglitz
- Golden Plains HO90, HO93, HO105, HO108, HO125, HO145, HO161
- Golden Plains VPO2: Bushland Reserves & Roadside Vegetation Areas
- WMO / BMO
- Golden Plains LSIO
- Golden Plains SMO
- Golden Plains DDO7: Rural Living Zone Outbuildings & Sheds





Character Area 2.12  
**Island Uplands**

## 2.12 ISLAND UPLANDS

The Island Uplands rise as three individual landforms (Mount Beckworth, Mount Bolton and Mount Ercildoune) from the Western Volcanic Plain. Their prominence is visible from long distances away, and is exacerbated by the Waubra Wind Farm that is sited on and around the rises.

The steep slopes are partially vegetated which has left the rock-strewn faces and bulging granitic outcrops exposed. These rugged features differentiate the Island Uplands from the smooth, rounded volcanic rises found in the adjacent area east of Clunes.

### Key Features

- Exposed granite outcrops
- Rough textured rises contrast within the volcanic landscape
- Mount Bolton
- Mount Beckworth scenic reserve
- Mount Ercildoune
- Undeveloped character
- Waubra Wind Farm

### Settlements

- No notable settlements



*Exposed granite outcrops*



*The adjacent smooth sided volcanic rises contrast in texture and scale*



*Mount Ercildoune*



*The forested silhouette of Mount Ercildoune*

Figure 1 Island Uplands Overview

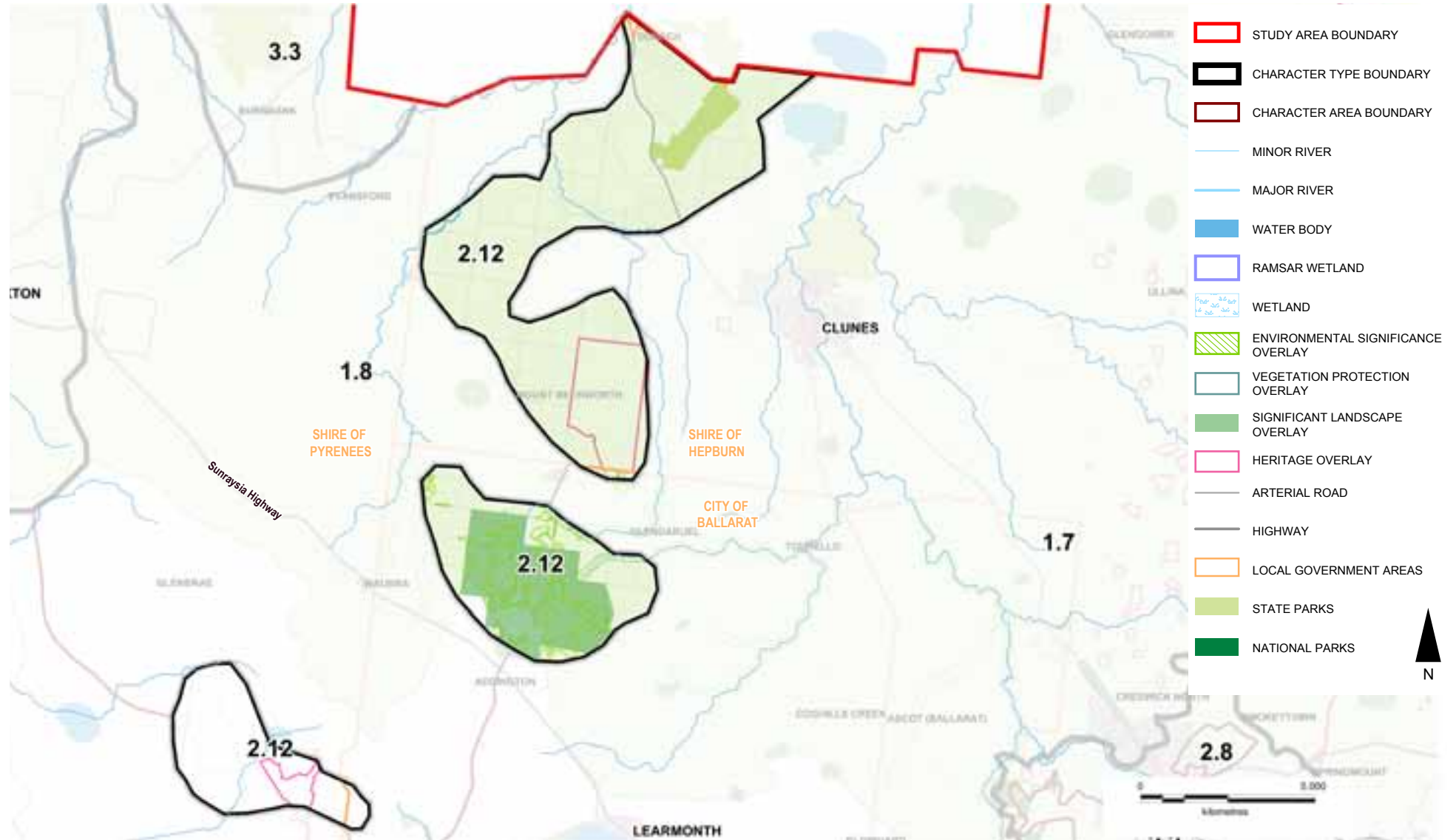


Figure 2 Island Uplands Landform

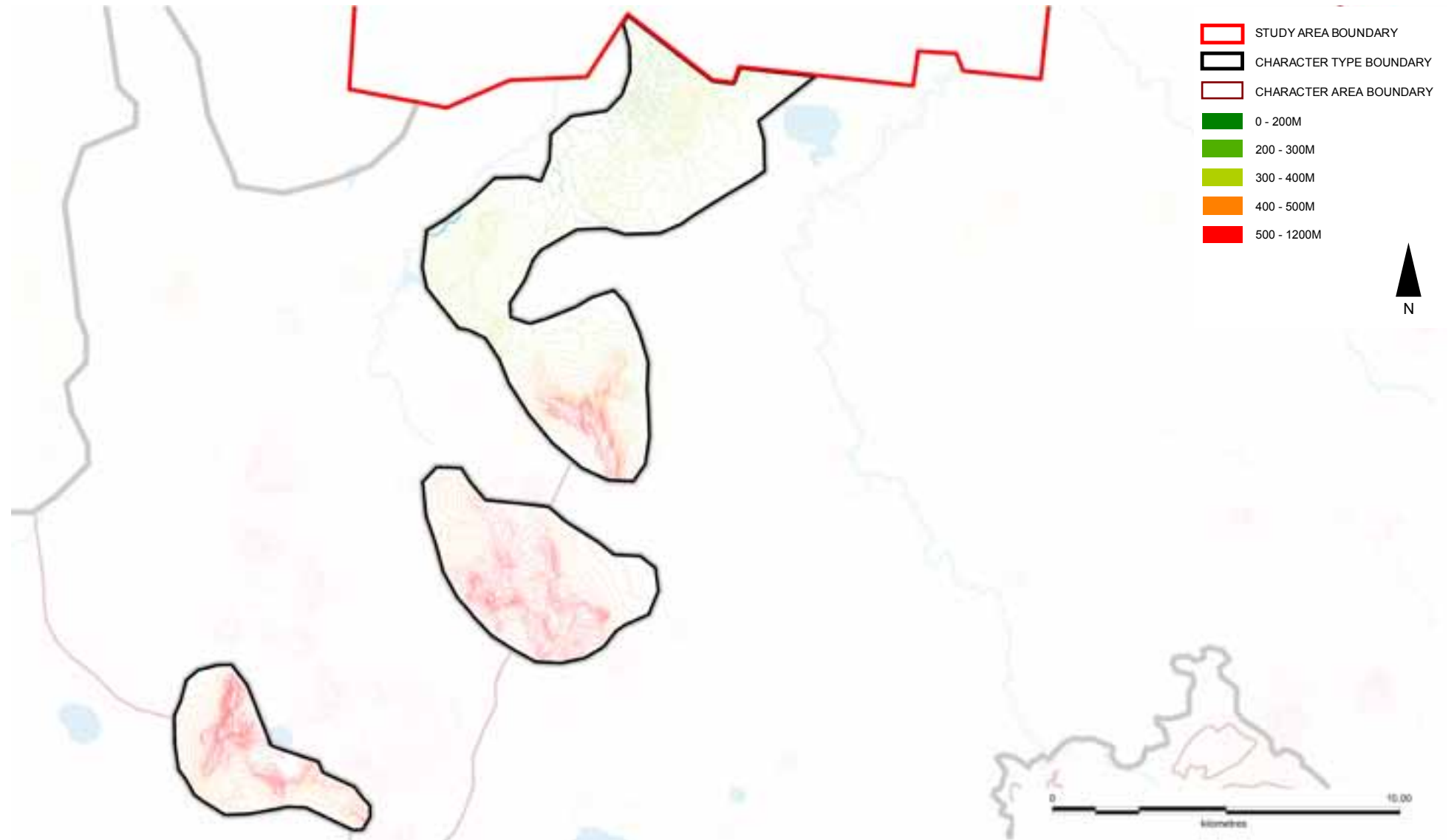




Figure 3 Island Uplands Aerial



## PATTERN OF VIEWING

The main viewing corridors for this Character Area are:

- Sunraysia Highway
- Eastern Peake Road
- Learmonth Road
- Ballarat - Maryborough Road
- Coghills Creek Road
- Beaufort-Waubra Road

This Character Area sits within the Western Volcanic Plain and is surrounded by volcanic rises which break up long range views. Windfarms appear and disappear behind the hills as the landscape is traversed.

The summit of Mount Beckworth offers panoramic views over the Character Area and across the Waubra Wind Farm.



*The Island Uplands appear on the horizon*



*Wind turbines are highly prominent when looking towards Mount Bolton from Troys Road near the Sunraysia Highway*



*View from Mount Beckworth looking west towards Waubra*



*Looking east on the Beaufort - Waubra Road towards the exposed granite faces of Mount Ercildoune*



*Looking west from Coghills Creek Road*

# LANDSCAPE VALUES

---

## Historic

- Jubilee Company Quartz Gold Mine, Jubilee Road, Scarsdale is listed on the Register of the National Estate & Victorian Heritage Register as a characteristic example of an important form of gold mining
- Ecrildoune Homestead, Victorian Heritage Register, National Trust of Australia

## Environmental/Scientific

- Mount Bolton, a unique landscape characterised by granite outcrops which has remnant mature forest with a unique range of habitats, protected by Ballarat SLO2
- Protected areas on the IUCN list
  - Dunach Nature Conservation Reserve, Category IA (Strict Nature Reserve)
  - Mount Beckworth Scenic Reserve, Category III (Natural Monument or Feature)

# LANDSCAPE PROTECTION & MANAGEMENT

---

## Planning Scheme Policies & Controls

This Character Area is subject to the Ballarat, Hepburn and Pyrenees Planning Schemes.

### Key Zones

- FZ
- PCRZ (Hepburn only)
- RLZ at Clunes
- RCZ (except Ballarat)
- PPRZ (Hepburn only)

### Key Overlays

- Ballarat SLO1: Mount Bolton
- Hepburn ESO1: Proclaimed Catchment Protection
- Hepburn HO895: Mount Beckworth Scenic Reserve
- Pyrenees HO23: Ercildoun Homestead
- WMO / BMO

