

Character Area 1.8

Volcanic Ranges

1.8 VOLCANIC RANGES

The Volcanic Ranges Character Area features numerous volcanic rises that are located within close proximity of each other, forming an undulating set of low, rounded ranges.

This is a sparsely settled area of cleared paddocks, long range views, big skies, small plantations, shelterbelts and volcanic features with an occasional backdrop of more vegetated rises. The Waubra wind farm dominates many of the volcanic rises and views within this area, with turbines located amongst or on top of them.

To the north, remnant Red Gums are strewn across paddocks, breaking up the expanses of cleared land which are prevalent in the south.

This Character Area is influenced by the close proximity of the Pyrenees Ranges to the West and the vegetated granitic outcrops of Mount Bolton, Mount Beckworth and Ercildoune rising to the east.

Key Features

- Wind turbines
- Volcanic rises
- The nearby presence of Mount Bolton and Mount Beckworth
- Cleared, agricultural land

Settlements

- Evansford
- Waubra



Windfarms are nestled in between and situated on top of the volcanic rises



The exposed faces of Ercildoune forms a rugged background feature within this Character Area

Figure 1 Volcanic Ranges Overview

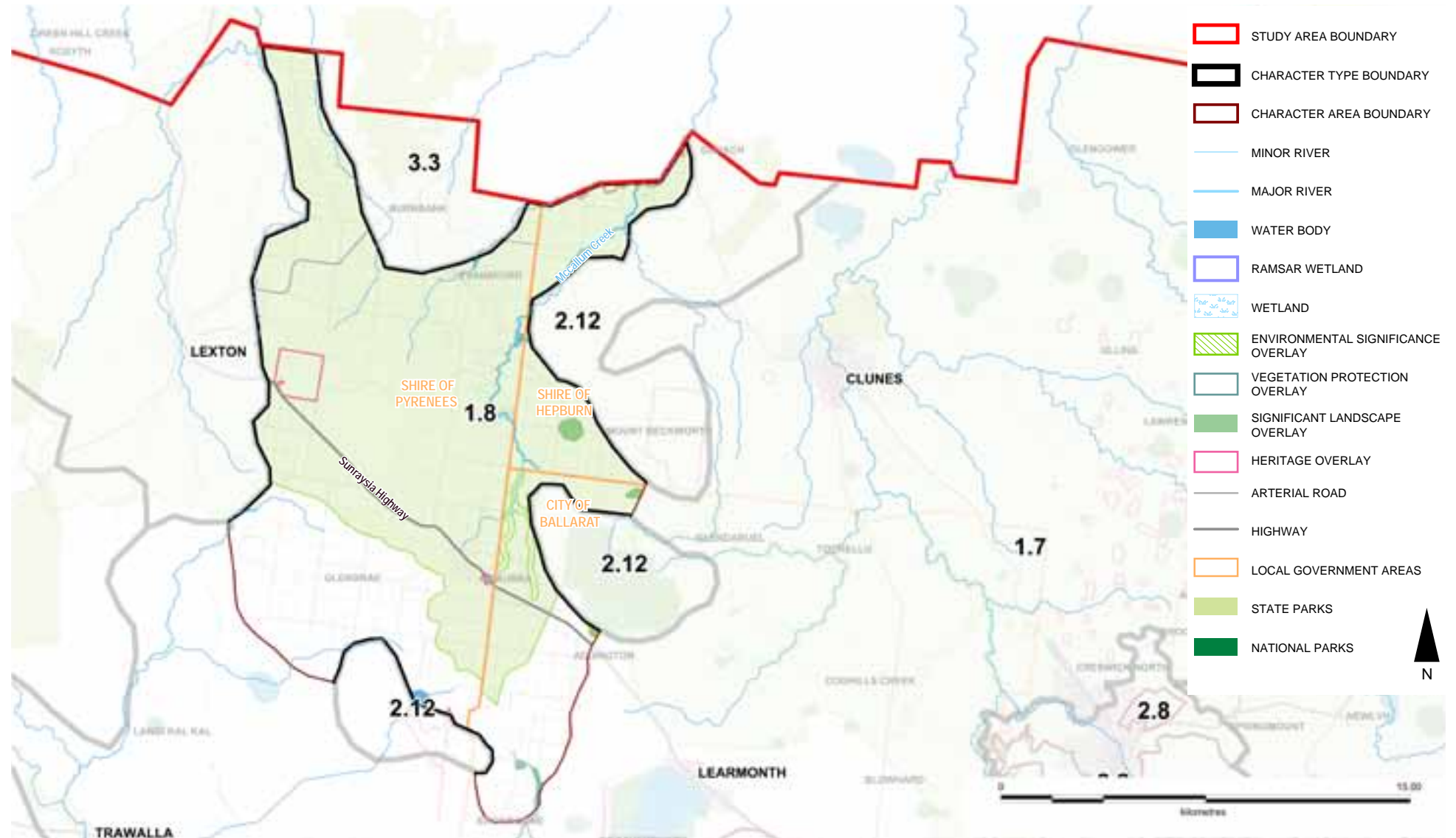


Figure 2 Volcanic Ranges Landform

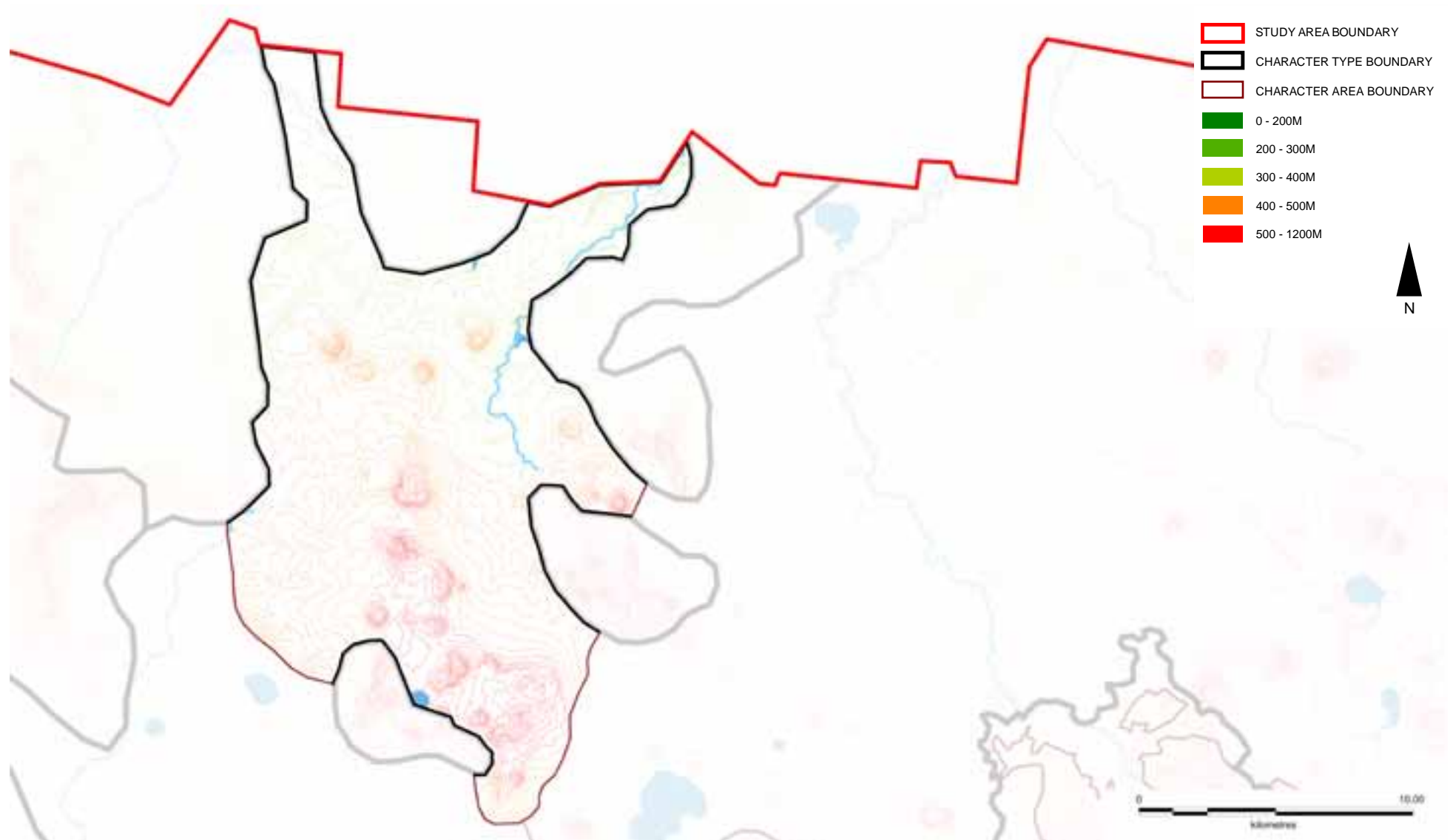
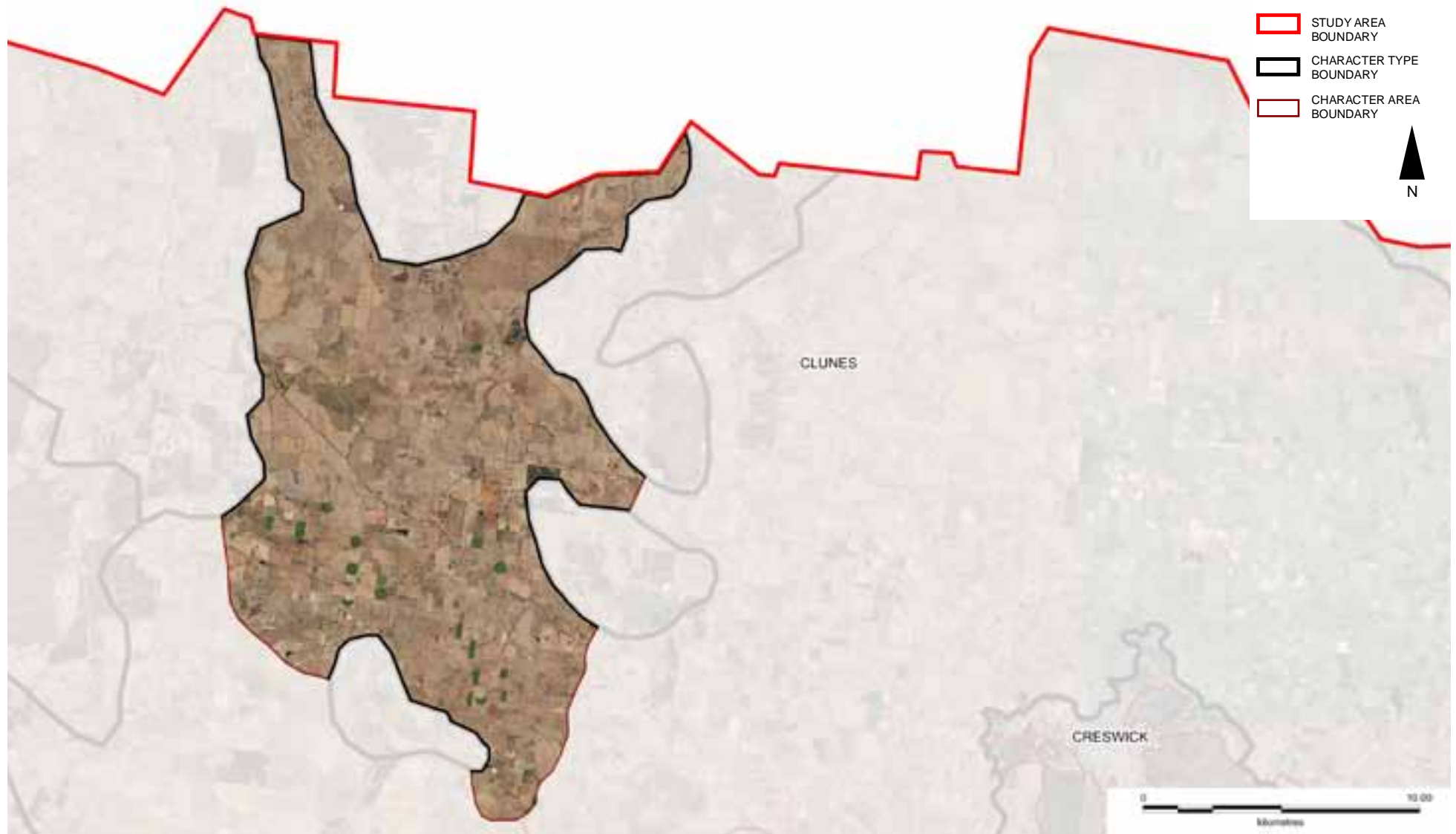


Figure 3 Volcanic Ranges Aerial



PATTERN OF VIEWING

Views from the major viewing corridors are often dominated by the Waubra Wind Farm, which is occasionally screened by native vegetation. On minor viewing corridors, open views are afforded across cleared agricultural plains towards the volcanic rises.

The main viewing corridors are as follows:

- Sunraysia Highway
- The Lexton-Talbot Road

Communications towers and aerials are a common addition to many of the volcanic rises.



The heavily cleared volcanic rises and wind turbines framed by shelterbelt planting



Long range views framed by turbines are available from the volcanic ranges



Long ranging views over cleared agricultural paddocks featuring volcanic rises that terminate at the vegetated uplands beyond



A number of roads wind through the rises and turbines, allowing for an 'immersed' viewing experience

LANDSCAPE VALUES

Environmental/Scientific

- Views to Mount Bolton, a unique landscape characterised by granite outcrops which has remnant mature forest, protected by Ballarat SLO1
- Volcanic peak landscape area, ridge or escarpment, protected by Hepburn SLO1
- State & locally significant roadside vegetation, protected by Pyrenees VPO1
- Koalas, habitats protected by Ballarat ESO5

Social

- Water catchment areas, protected by Ballarat ESO3, Hepburn ESO1 & Pyrenees ESO1, supply potable water to urban & rural communities throughout the region

LANDSCAPE PROTECTION & MANAGEMENT

Planning Scheme Policies & Controls

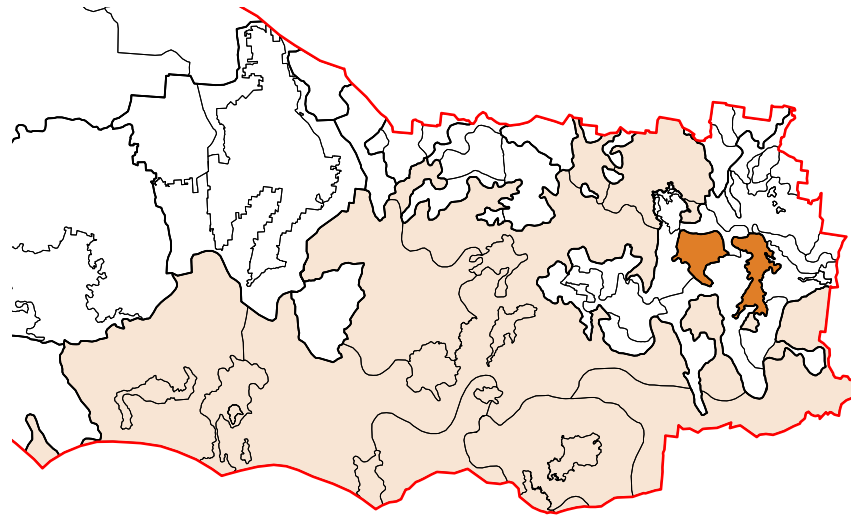
This Character Area is subject to the Ballarat, Hepburn and Pyrenees Planning Schemes.

Key Zones

- FZ
- RLZ at Evansford, Waubra
- RCZ (Pyrenees only)

Key Overlays

- Ballarat SLO1: Mount Bolton
- Hepburn SLO1: Volcanic Peaks Landscape Area, Ridges & Escarpments Area & Sites of Geological Significance
- Ballarat ESO2: Streamside & Watercourse Protection
- Ballarat ESO3: Water Catchment Areas
- Hepburn ESO1: Proclaimed Catchment Protection
- Pyrenees ESO1: Designated Water Supply Areas
- Pyrenees HO23: Ercildoun, HO24: Mount Mitchell Homestead & Stables, HO508: Waubra Heritage Precinct
- Pyrenees VPO1: Roadside Grassland Protection & Conservation
- WMO / BMO
- Hepburn LSIO
- Pyrenees RO13: Evansford & Talbot Reservoir Catchment
- Pyrenees RO25: McCallum Creek Environs



Character Area 1.9

Vegetated Volcanic Plains

1.9 VEGETATED VOLCANIC PLAINS

This Character Area has a more heavily vegetated appearance than the more cleared, expansive parts of the Volcanic Plain. It sits predominantly on the flat to undulating plateaus edged by deeply incised gorges, to the east and south of Ballarat.

The windswept nature of the plateaus has seen historic installation of a large number of Pine and Cypress shelterbelts along property edges, as avenues up driveways and surrounding houses. Many dwellings have formal garden styles. There is also a prevalence of native vegetation scattered throughout paddocks (in stands and as isolated trees), along roadsides and along creek lines and property edges. Roadsides and paddocks may contain a large number of weed species including blackberries and hawthorn, and dense patches of gorse. The vegetated volcanic rise of Mount Warrenheip forms a distinctive landmark on the outskirts of Ballarat, and the township of Gordon has a volcanic rise creating a scenic backdrop.

This Character Area is also notable for the number of small settlements and individual dwellings which become denser and more numerous in areas close to Ballarat.

Key Features

- Large amount of patchy vegetation cover
- Dense land settlement & smaller subdivisions
- The volcanic rises of Mount Warrenheip and Gordon
- Exotic shelterbelt planting

Settlements

- Ballarat (part)
- Ballan
- Bunkers Hill
- Dunnstown
- Cardigan Village
- Fiskville



Shelterbelt planting on the volcanic cone at Gordon



Mount Warrenheip on the outskirts of Ballarat

Figure 1 Vegetated Volcanic Plains Overview

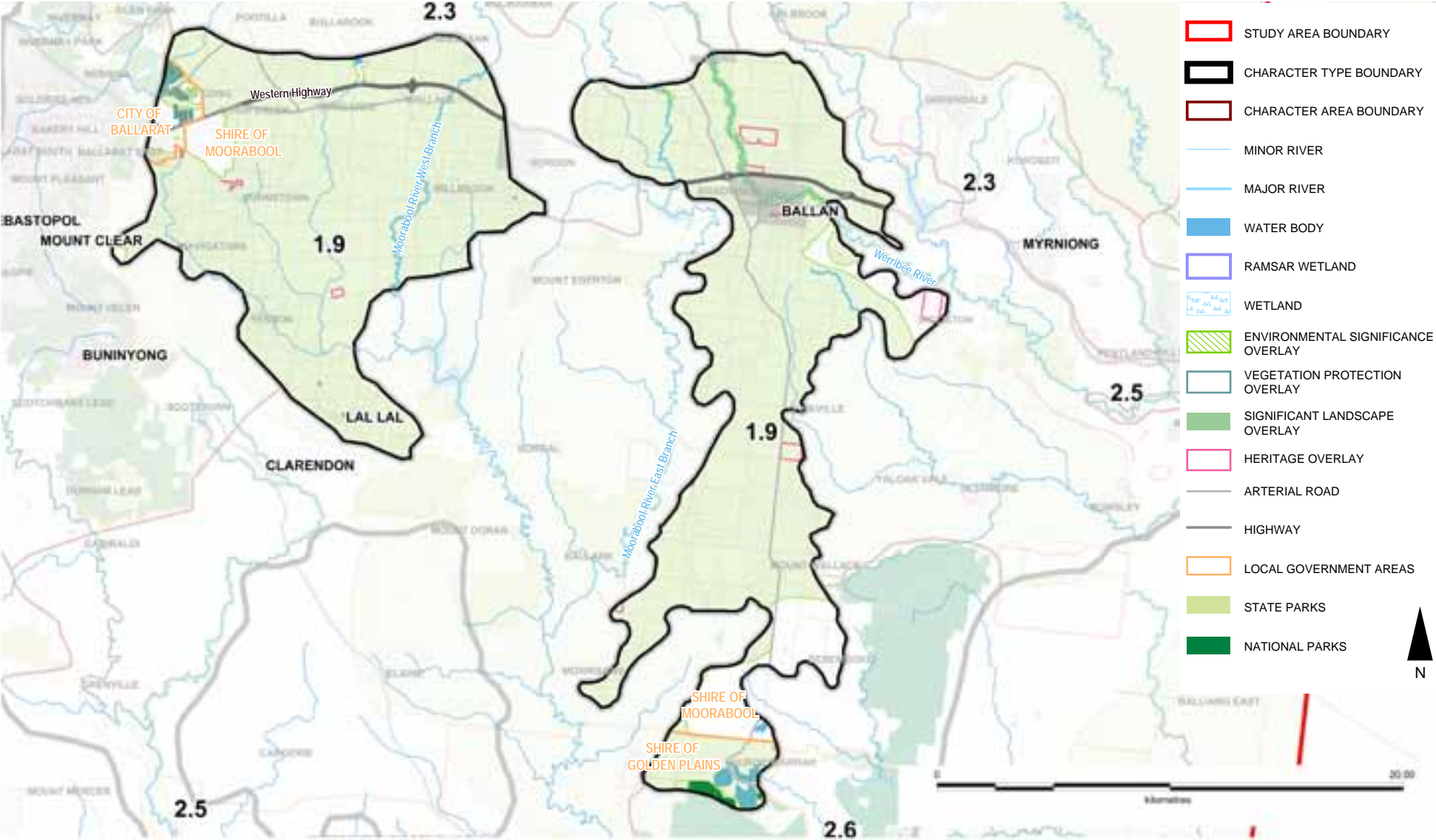


Figure 2 Vegetated Volcanic Plains Landform



Figure 3 Vegetated Volcanic Plains Aerial



LANDSCAPE VALUES

The main viewing corridors within this Character Area are as follows:

- Western Freeway
- C141 Ballan-Geelong Road
- Old Melbourne Road
- Old Western Highway

Views are generally long although some views are blocked by roadside vegetation or development.



Mount Warrenheip offers views over this Character Area and the adjacent Uplands Character Type



Thick shelterbelt planting at roadsides



Volcanic cone at Gordon with weedy roadside vegetation in foreground



View towards Mount Warrenheip is medium in range, terminating in a wooded backdrop of the volcanic cone with residential and agricultural development set back from the road



Remnant vegetation gives a green character, however Hawthorn bushes, blackberries and other weeds often dominate the roadsides

LANDSCAPE VALUES

Environmental/Scientific

- Koalas, habitats protected by Ballarat ESO5
- Mount Warrenheip Flora Reserve, a protected area on the IUCN list, Category IA (Strict Nature Reserve)
- Locally significant environmental attributes, protected by Golden Plains ESO3
- Locally significant native vegetation areas, protected by Ballarat VPO1

Social

- Proclaimed water catchment areas including Barwon Water Supply Catchment Area, protected by Golden Plains ESO1 & Moorabool ESO1, supply potable water to urban & rural communities throughout the region

LANDSCAPE PROTECTION & MANAGEMENT

Planning Scheme Policies & Controls

This Character Area is subject to the Ballarat, Golden Plains and Moorabool Planning Schemes.

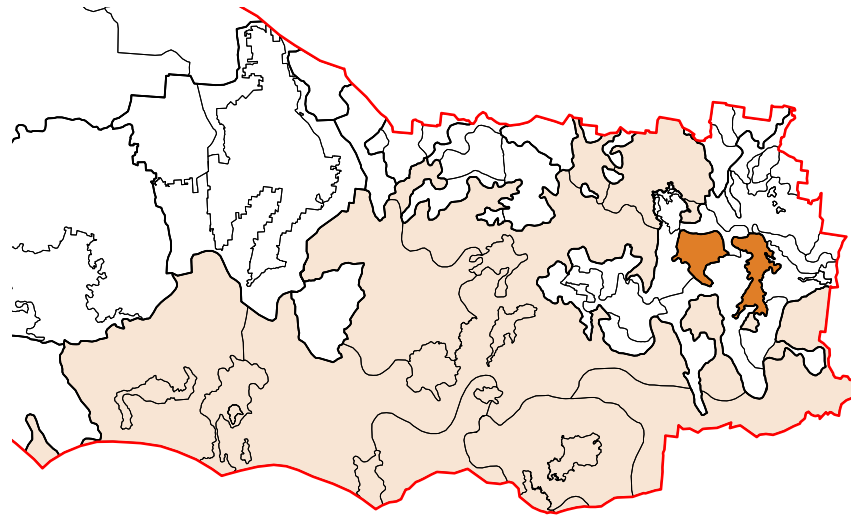
Key Zones

- FZ
- PCRZ (except Ballarat)
- RLZ at Brown Hill / Warrenheip, Lal Lal, Gordon / Mount Egerton, Wallace & Yendon
- RCZ3 (Golden Plains only)
- PUZ1
- SUZ2 (Moorabool only)

- Golden Plains SMO
- Ballarat DDO2: Western Highway - Leigh Creek to Woodmans Hill
- Moorabool DDO2: Visual Amenity & Building Design
- Ballarat EAO
- Ballarat PAO1: Road Construction or Widening

Key Overlays

- Ballarat ESO1: Invermay Land Protection Area
- Ballarat ESO2: Streamside & Watercourse Protection
- Ballarat ESO5: Koala & Koala Habitat Protection
- Golden Plains ESO1: Barwon Water Supply Catchment
- Golden Plains ESO3: Mount Misery Creek, Surface Hill – Smythesdale, Klein & Swanston Road Area, Dereel, Swamp Road – Dereel, Yarrowee Creek, Teesdale Reserve, Moorabool Valley, Sutherland Creek, Meredith, Steiglitz
- Moorabool ESO1: Proclaimed Water Catchment Areas
- Moorabool ESO5: Ballan Sewage Treatment Plant Buffer Area
- Golden Plains HO11: Darra, HO111: Outlet Towers
- Moorabool HO26, HO40, HO45: Homesteads, HO49: Stables
- Ballarat VPO1: Native Vegetation Protection Areas
- Golden Plains LSIO
- WMO / BMO



Character Area 1.9

Vegetated Volcanic Plains

1.9 VEGETATED VOLCANIC PLAINS

This Character Area has a more heavily vegetated appearance than the more cleared, expansive parts of the Volcanic Plain. It sits predominantly on the flat to undulating plateaus edged by deeply incised gorges, to the east and south of Ballarat.

The windswept nature of the plateaus has seen historic installation of a large number of Pine and Cypress shelterbelts along property edges, as avenues up driveways and surrounding houses. Many dwellings have formal garden styles. There is also a prevalence of native vegetation scattered throughout paddocks (in stands and as isolated trees), along roadsides and along creek lines and property edges. Roadsides and paddocks may contain a large number of weed species including blackberries and hawthorn, and dense patches of gorse. The vegetated volcanic rise of Mount Warrenheip forms a distinctive landmark on the outskirts of Ballarat, and the township of Gordon has a volcanic rise creating a scenic backdrop.

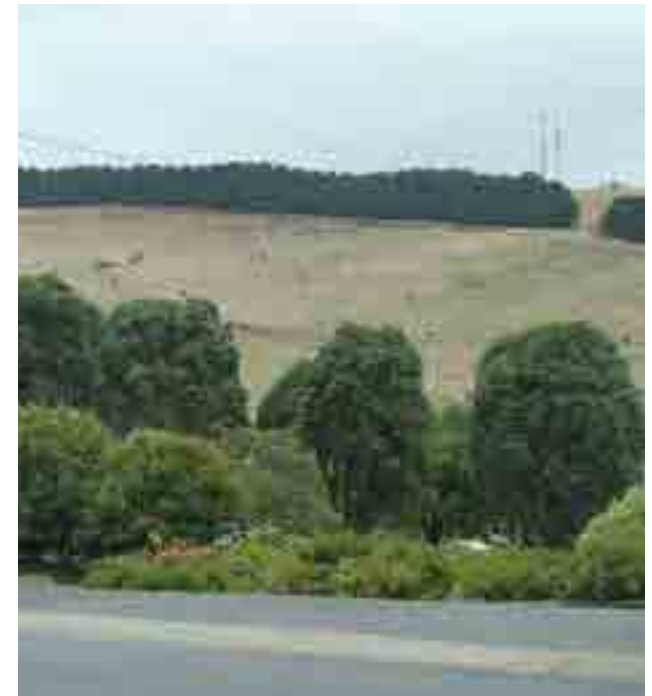
This Character Area is also notable for the number of small settlements and individual dwellings which become denser and more numerous in areas close to Ballarat.

Key Features

- Large amount of patchy vegetation cover
- Dense land settlement & smaller subdivisions
- The volcanic rises of Mount Warrenheip and Gordon
- Exotic shelterbelt planting

Settlements

- Ballarat (part)
- Ballan
- Bunkers Hill
- Dunnstown
- Cardigan Village
- Fiskville



Shelterbelt planting on the volcanic cone at Gordon



Mount Warrenheip on the outskirts of Ballarat

Figure 1 Vegetated Volcanic Plains Overview

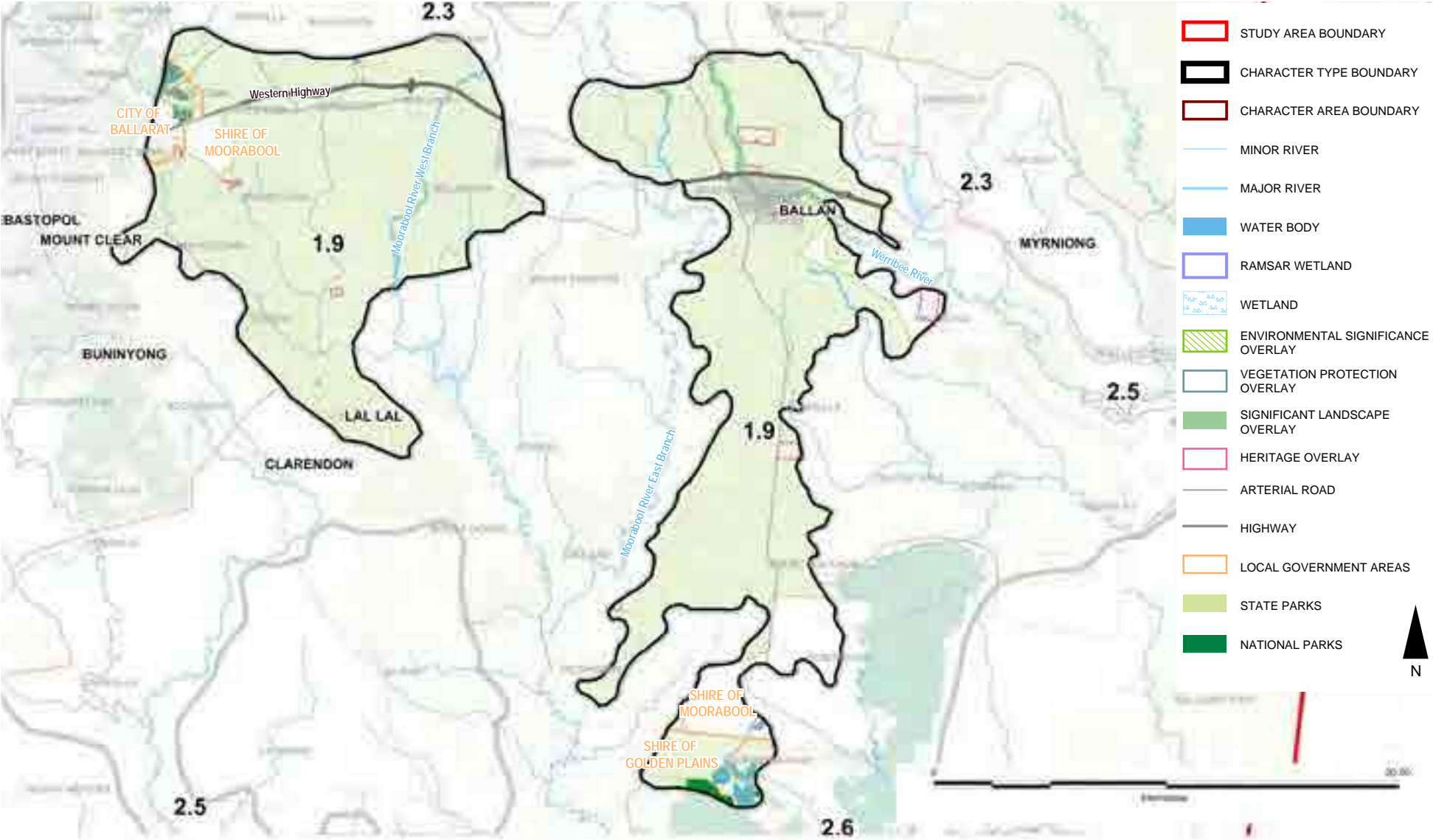
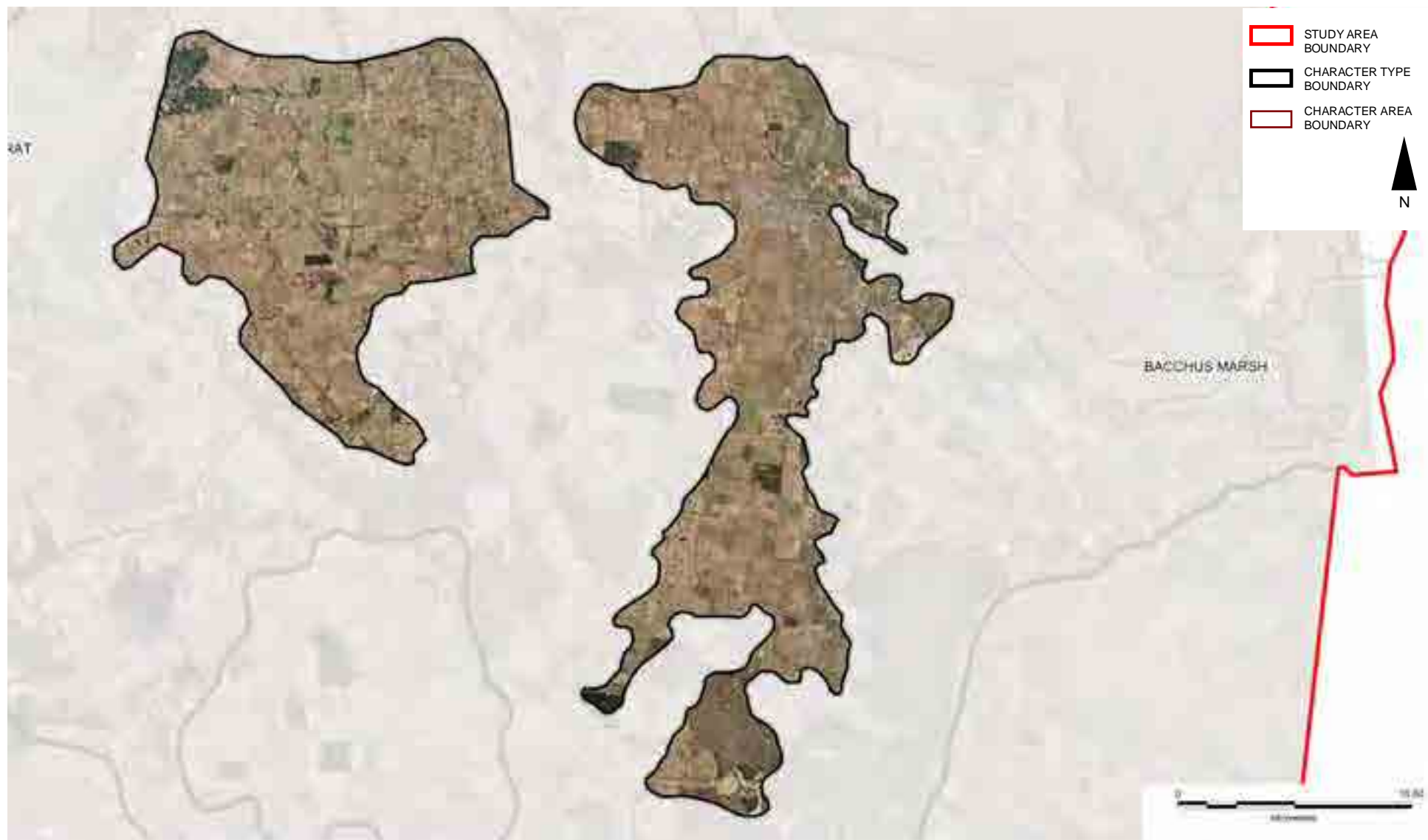


Figure 2 Vegetated Volcanic Plains Landform



Figure 3 Vegetated Volcanic Plains Aerial



LANDSCAPE VALUES

The main viewing corridors within this Character Area are as follows:

- Western Freeway
- C141 Ballan-Geelong Road
- Old Melbourne Road
- Old Western Highway

Views are generally long although some views are blocked by roadside vegetation or development.



Mount Warrenheip offers views over this Character Area and the adjacent Uplands Character Type



Thick shelterbelt planting at roadsides



Volcanic cone at Gordon with weedy roadside vegetation in foreground



View towards Mount Warrenheip is medium in range, terminating in a wooded backdrop of the volcanic cone with residential and agricultural development set back from the road



Remnant vegetation gives a green character, however Hawthorn bushes, blackberries and other weeds often dominate the roadsides

LANDSCAPE VALUES

Environmental/Scientific

- Koalas, habitats protected by Ballarat ESO5
- Mount Warrenheip Flora Reserve, a protected area on the IUCN list, Category IA (Strict Nature Reserve)
- Locally significant environmental attributes, protected by Golden Plains ESO3
- Locally significant native vegetation areas, protected by Ballarat VPO1

Social

- Proclaimed water catchment areas including Barwon Water Supply Catchment Area, protected by Golden Plains ESO1 & Moorabool ESO1, supply potable water to urban & rural communities throughout the region

LANDSCAPE PROTECTION & MANAGEMENT

Planning Scheme Policies & Controls

This Character Area is subject to the Ballarat, Golden Plains and Moorabool Planning Schemes.

Key Zones

- FZ
- PCRZ (except Ballarat)
- RLZ at Brown Hill / Warrenheip, Lal Lal, Gordon / Mount Egerton, Wallace & Yendon
- RCZ3 (Golden Plains only)
- PUZ1
- SUZ2 (Moorabool only)

- Golden Plains SMO
- Ballarat DDO2: Western Highway - Leigh Creek to Woodmans Hill
- Moorabool DDO2: Visual Amenity & Building Design
- Ballarat EAO
- Ballarat PAO1: Road Construction or Widening

Key Overlays

- Ballarat ESO1: Invermay Land Protection Area
- Ballarat ESO2: Streamside & Watercourse Protection
- Ballarat ESO5: Koala & Koala Habitat Protection
- Golden Plains ESO1: Barwon Water Supply Catchment
- Golden Plains ESO3: Mount Misery Creek, Surface Hill – Smythesdale, Klein & Swanston Road Area, Dereel, Swamp Road – Dereel, Yarrowee Creek, Teesdale Reserve, Moorabool Valley, Sutherland Creek, Meredith, Steiglitz
- Moorabool ESO1: Proclaimed Water Catchment Areas
- Moorabool ESO5: Ballan Sewage Treatment Plant Buffer Area
- Golden Plains HO11: Darra, HO111: Outlet Towers
- Moorabool HO26, HO40, HO45: Homesteads, HO49: Stables
- Ballarat VPO1: Native Vegetation Protection Areas
- Golden Plains LSIO
- WMO / BMO

