

Part 2 – delivering the vision

© Shire of Nillumbik 2010

This work is copyright. Apart from any use as permitted under the *Copyright Act 1968*, no part may be reproduced without permission from the Shire of Nillumbik.

Requests and inquiries concerning reproduction and rights should be addressed to:
Manager, Governance and Communications
PO Box 476, Greensborough, Vic 3088
email: nillumbik@nillumbik.vic.gov.au.

Contents

ILLUSTRATIONS AND TABLES	IV
PREFACE.....	V
A note on the structure of the Nillumbik Green Wedge Management Plan.....	v
SUMMARY	VI
Conserving a valuable resource.....	vii
A community vision for the future	viii
Aims of the Nillumbik Green Wedge Management Plan	viii
Guiding principles	ix
Implementing the plan	ix
1. VISION.....	1
2. GUIDING PRINCIPLES	2
3. AIMS.....	4
4. AREAS FOR ACTION	5
A multi-layered approach.....	5
4.1 Environment.....	5
4.2 Economy	9
4.3 People and communities	15
4.4 Governance.....	22
5. IMPLEMENTATION PLAN.....	23
ABBREVIATIONS AND TERMS	24
BIBLIOGRAPHY	27

Illustrations and tables

Figure 1	The Nillumbik Green Wedge	Page vi
----------	---------------------------	---------

Preface

The Nillumbik Green Wedge Management Plan contains a long term vision for the green wedge and a range of existing and new initiatives that work towards delivering that vision. The plan will direct council policy and planning decisions relating to the green wedge and will be a referenced document in the planning scheme.

A note on the structure of the Nillumbik Green Wedge Management Plan

There are two parts to the Nillumbik Green Wedge Management Plan: Part 1 provides background and context, and Part 2 sets out the vision for the Nillumbik Green Wedge with a framework and implementation plan for achieving that vision.

Part 1 – background and context

This explains what a green wedge is, what is special about the Nillumbik Green Wedge, the challenges and issues for its future and why Nillumbik needs a green wedge management plan. It summarises the policy context for such a plan and, finally, it describes how the plan was developed through community consultation.

More detailed information is available in the *Green Wedge Background Paper* 2007, which outlines the way that land is currently being used in the Nillumbik Green Wedge and is a key source of information for the plan.

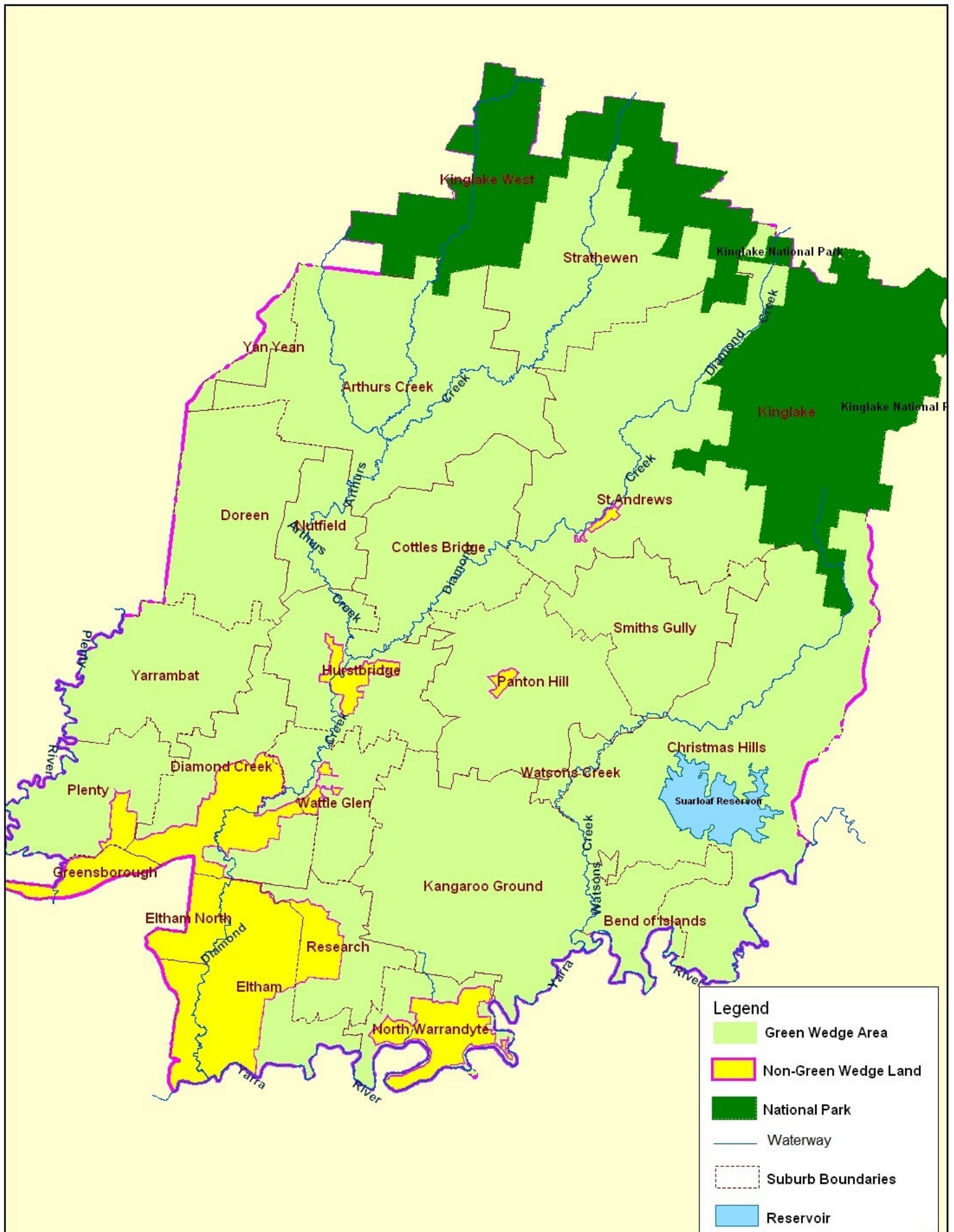
Appendices in Part 1 include more detailed information on:

- green wedges
- the natural and cultural values of the Nillumbik Green Wedge
- the economy of the Nillumbik Green Wedge
- the consultation that informed the management plan.

Part 2 – delivering the vision

This sets out the vision for the Nillumbik Green Wedge and ways to work towards achieving that vision. It contains the following sections:

- Summary of the green wedge management plan
- Vision
- Guiding principles
- Aims
- Areas for action
 - environment
 - economy
 - people and communities
 - governance
- Implementation plan.



Conserving a valuable resource

In 1994, the Local Government Review Board declared that the new Shire of Nillumbik was to be a conservation shire with the green wedge as its strategic focus. The Nillumbik Green Wedge is fundamental to the identity of the shire and the *Council Plan 2009–2013* recognises council's responsibility for managing and protecting it (action 2.1.5).

The concept of green wedges as rural landscapes and natural areas separating corridors of urban development is a longstanding metropolitan planning commitment. The intention in maintaining green wedges is to retain a viable rural environment for farming, recreation, conservation, and natural resources. This intention has been endorsed and promoted by the Victorian State Government policy document *Melbourne 2030* and, subsequently, by *Melbourne @ 5 million*.

In this context the Nillumbik Green Wedge is a resource to be cared for and managed on behalf of the whole metropolitan community because of its environment and its recreational, agricultural, economic and social values.

The *Council Plan 2009–2013* also recognises the importance of the green wedge for the local economy. It supports actions to protect the environment and landscapes by encouraging appropriate economic development in the green wedge including tourism, food production and agriculture.

The purpose of the Nillumbik Green Wedge Management Plan (GWMP) is to direct the sustainable management of the Nillumbik Green Wedge in relation to all strategic planning and use of the non-urban areas of the shire.

Green wedge townships are included in the GWMP as they are an integral part of its landscape. While they are not physically in the Green Wedge Zones – they are zoned as townships and inside urban growth boundaries – the protection of their character and future vitality is important to the future of the green wedge.

Their character will be protected through adherence to township plans, neighbourhood character guidelines and other existing overlays. Where structure plans do not exist they will be prepared as separate projects with allied consultation.

A community vision for the future

The Nillumbik community has a strong attachment to the Nillumbik Green Wedge and is keenly interested in safeguarding this special place now and for future generations.

Extensive background research and many months of community consultation combined to create a vision for the future of the Nillumbik Green Wedge and aims and guiding principles for its management.

In 2030 management of the Nillumbik Green Wedge will lead the way in economic, environmental and social sustainability. The green wedge will be secure and will be valued by the local and wider Melbourne community for its natural and cultural values.

The future of the Nillumbik Green Wedge is one in which:

- natural and cultural values are conserved and enhanced
- bush and rural landscapes are conserved and enhanced
- the economic future is sound
- communities are strong, connected and supported and are knowledgeable about the Nillumbik Green Wedge
- local identity and diversity is respected and nurtured.

The methods of managing the green wedge may change according to circumstances but the aims and the guiding principles remain constant, providing fixed reference points in a changing world.

Aims of the Nillumbik Green Wedge Management Plan

1. Conserve and enhance the natural values, landscapes and cultural heritage of the Nillumbik Green Wedge.
2. Increase local and wider community understanding and enjoyment of the special nature of the Nillumbik Green Wedge.
3. Maintain strong, connected and diverse communities.
4. Achieve a diverse economic base in the Nillumbik Green Wedge that helps local communities to thrive but does not impact negatively on natural and cultural values or on the valued character of towns, settlements and landscapes.
5. Minimise bushfire risk to human life.
6. Involve communities and other stakeholders in delivering the GWMP.
7. Deliver the GWMP and future actions in keeping with the guiding principles.

Guiding principles

1. Collaboration
2. Sustainability: social, environmental, economic
3. Leadership
4. Connectedness
5. Conserve and enhance
6. Embrace change
7. Social equity
8. Celebrate local identity
9. Precautionary principle (anticipate the possibility of detrimental social, health or environmental outcomes of any action and act to avoid serious or irreversible harm)
10. Appreciation and enjoyment

The guiding principles are set out in full on page 2.

Implementing the plan

The GWMP will be a reference document in the Nillumbik Planning Scheme and responsibility for its implementation will sit with Strategic Planning.

1. Vision

During 2007 Nillumbik Shire Council consulted with Nillumbik's communities to find out what people value about the Nillumbik Green Wedge and how they see its future. What is clear from the consultation is that the community has a strong attachment to the Nillumbik Green Wedge and an aspirational vision for its future.

In 2030 management of the Nillumbik Green Wedge will lead the way in economic, environmental and social sustainability. It will be secure and will be valued by both the local and the wider Melbourne community for its natural and cultural values.

The future of the Nillumbik Green Wedge is one in which:

- natural and cultural values are conserved and enhanced
- bush and rural landscapes are conserved and enhanced
- the economic future is sound
- communities are strong, connected and supported and are knowledgeable about the Nillumbik Green Wedge
- local identity and diversity is respected and nurtured.

What the community values about the Nillumbik Green Wedge

- Its biodiversity: the plants and animals, some of which are endangered.
- Its cultural heritage: a place that nurtures and inspires artists.
- Its space and landscapes: the visual aesthetics of the bush and rural landscapes and the sense of place, including the feelings of isolation, peace and wellbeing they engender.
- Strong community spirit and culture of volunteering.
- Local identity: the people and character of the small townships are valued for their unique qualities.
- Working in partnership to deliver the GWMP.

GWMP values, vision and guiding principles (November 2007 p. 3)

2. Guiding principles

The following ten guiding principles were written following consultation. Management of the Nillumbik Green Wedge will be shaped by these, now and into the future.

Principle 1 – Collaboration

Council, community and other stakeholders work in partnership towards a sustainable Nillumbik Green Wedge and will:

- provide opportunities for collaboration and involvement
- seek and develops partnerships.

Principle 2 – Sustainability: social, environmental and economic

Sustainability is something we work towards. Council and community must manage the Nillumbik Green Wedge in ways that:

- demonstrate exemplary sustainable practices
- conserve and enhance natural and cultural values
- contribute to a diverse local economy that does not impact negatively on green wedge values
- connect and support communities
- encourage sustainable living and take account of the 'ecological footprint' of human activity.

Principle 3 – Leadership

In managing the Nillumbik Green Wedge, council will demonstrate:

- strong, courageous and proactive leadership
- advocacy
- creativity and innovation
- transparency.

Principle 4 – Connectedness

Recognise that the Nillumbik Green Wedge does not exist in isolation but is part of a complex web of relationships. For example, there is inter-connectedness, and inter-dependence, between:

- communities within the Shire of Nillumbik, for example between communities in the shire's urban and rural areas
- communities beyond the municipal boundary including metropolitan Melbourne
- different tiers of government and non-government agencies, local, state and federal, which have overlapping interests and responsibilities.

Principle 5 – Conserve and enhance

The Nillumbik Green Wedge environment and cultural heritage are irreplaceable resources for the local and wider metropolitan community. The Nillumbik Green Wedge will be managed to:

- conserve and enhance biodiversity and natural values
- conserve and celebrate cultural values and identity
- conserve and enhance Nillumbik Green Wedge open spaces and landscapes.

Principle 6 – Embrace change

Recognise that there will be change in the Nillumbik Green Wedge. It is a dynamic environment. Change must be addressed and managed in a proactive and sustainable way to conserve the values of the Nillumbik Green Wedge. Trade-offs may be necessary, for example environmental values might be protected in one area in exchange for economic benefit in another.

Principle 7 – Social equity

The needs of all people will be considered. Attention will be paid to:

- embracing a diverse social mix
- providing people with options to suit their needs, such as different housing options for different life stages
- access to services.

Principle 8 – Celebrate local identity

Individual communities in the Nillumbik Green Wedge have a strong sense of local identity and cohesion. The Nillumbik Green Wedge will be managed in ways that:

- contribute to strong and connected communities
- celebrate diversity and support the identity of individual communities.

Principle 9 – Precautionary principle

Management needs to anticipate the possibility of detrimental social, health or environmental outcomes from any action. In general the precautionary principle involves acting to avoid serious or irreversible harm, even when full scientific certainty about the likelihood of such harm is lacking.

Principle 10 – Appreciation and enjoyment

The Nillumbik Green Wedge is a living landscape and will be managed in ways that promote enjoyment and an increased understanding of the natural and cultural values.

3. Aims

The Nillumbik Green Wedge Management Plan provides a strategic framework for managing the green wedge. This framework is expressed as seven broad aims. Like the guiding principles, the aims provide fixed reference points in a changing world. The methods of managing the green wedge may change according to circumstances, but the aims remain constant.

1. Conserve and enhance the natural values, landscapes and cultural heritage of the Nillumbik Green Wedge.
2. Increase local and wider community understanding and enjoyment of the special nature of the Nillumbik Green Wedge.
3. Maintain strong, connected and diverse communities.
4. Achieve a diverse economic base in the Nillumbik Green Wedge that helps local communities to thrive but does not impact negatively on natural and cultural values or on the valued character of towns, settlements and landscapes.
5. Minimise bushfire risk to human life.
6. Involve communities and other stakeholders in delivering the GWMP.
7. Deliver the GWMP and future actions in keeping with the guiding principles.

4. Areas for action

A multi-layered approach

This part of the plan sets out the objectives and strategies for the management of the Nillumbik Green Wedge.

- Objectives provide specific goals against which to measure progress towards the aims.
- Strategies provide practical ways to achieve the objectives.

Breaking down the areas of action in this way provides a multi-layered and multi-faceted response to complex and multi-layered planning issues. Several objectives may address a single aim and several strategies, in their turn, may address a single objective.

Section 5 of this document, the implementation plan, drills down even further. It provides specific actions, programs or initiatives to address various components of the green wedge management.

The structure of this section follows the headings in the *Council Plan 2009–2013*.

- Environment – biodiversity and landscape
- Economy – agriculture, tourism, business development
- People and communities – settlement, recreation, cultural heritage, transport and infrastructure, strengthening communities
- Governance

4.1 Environment

A healthy environment is the foundation for the wellbeing of people and the local economy. 'Everyone has an impact on the environment and everyone has a responsibility to reduce that impact' (DSE 2006).

The natural environment is under a great deal of pressure. Key threats include climate change and the impacts of bushfires such as those experienced by Nillumbik in February 2009 bushfires. Conserving biodiversity and natural values is a priority for the GWMP.

The Nillumbik Green Wedge is recognised for the quality of its natural environment. It supports a diverse range of native fauna and indigenous flora, many of which are threatened species.

The Nillumbik Green Wedge needs to be conserved and managed at a landscape scale¹. The long term conservation of biodiversity needs large areas of high quality native vegetation interconnected by a network of habitat corridors. In Nillumbik these areas are on both public and private land and across council boundaries: habitats do not discriminate. Cooperation with adjoining councils, government, non-government agencies and individual landowners will continue to be important if we are to conserve biodiversity and the natural values of the green wedge. Equally important is careful land use that focuses on preventing negative impacts to the environment.

Community groups, such as Landcare, are important in achieving this landscape scale conservation by working across boundaries and increasing individual landowner capacity. A great many landowners manage their properties primarily to protect and enhance biodiversity and their efforts need to be supported.

The green wedge landscape, its biodiversity and natural values will need to be managed in ways that conserve and enhance those values for the benefit of current and future generations.

For more detail on the specific natural and cultural values of the Nillumbik Green Wedge see Appendix 2 in Part 1.

4.1.1 Biodiversity

We need to recognise our dependence on biodiversity and ecosystems and the services they provide and factor this into our everyday decision making ... The state's biodiversity is fundamental to the welfare and wellbeing of Victorians' (Jennings, G. in DSE 2008, p. i).

The Nillumbik Green Wedge has a high diversity of plants, animals and micro-organisms which together form a valuable ecosystem. The biological forms and the physical environment interact, making the Nillumbik Green Wedge a highly complex, varied and valuable resource.

A comprehensive study of the biodiversity of Melbourne's north-east, the NEROC report, identified 15 biodiversity 'hotspots' in the Nillumbik Green Wedge, and three sites of national significance for their fauna. The Department of Sustainability and Environment lists 72 biosites in the Nillumbik Green Wedge, ten of which have state significance and 29 of regional significance.

¹ '...landscape-scale conservation includes three basic ideas: (1) such initiatives should encompass some *regional* system of interconnected properties; (2) such efforts are in some way organised to achieve one or several *specific conservation objectives*; and (3) various landowners and managers within a given conservation region *cooperate or collaborate* in some concrete fashion to achieve those objectives' (Mitchell 2004).

The biodiversity of the Nillumbik Green Wedge is a valuable natural resource for the whole metropolitan area. Conservation of its natural values is a priority for the green wedge management plan. This position is fully aligned with, and supportive of, The Victorian Government's proposed 50-year vision for Victoria's land and biodiversity: 'Victorians actively conserving and restoring ecosystems to ensure our land, seas and waterways are healthy, resilient and productive', DSE 2008, p, 30).

4.1.2 Landscape

Landscape is about the relationship between people and place. It provides the setting for our day-to-day lives. The term does not mean just special or designated landscapes ... It results from the way that different components of our environment – both natural ... and cultural ... interact together and are perceived by us. People's perceptions turn land into the concept of landscape (Countryside Agency 2002 p. 2).

The Nillumbik Green Wedge landscapes are a defining feature of the shire. The Shire of Nillumbik's logo depicts a landscape of rolling hills and trees with the words 'The Green Wedge Shire'.

The rural areas provide vistas of agricultural land, treed bushland, hills and waterways. From key points in the shire there are long views towards Melbourne, Kinglake Ranges and the Yarra Valley. The Nillumbik Green Wedge landscapes are a joy to look at and to experience. They are important to biodiversity, social wellbeing and to the economy as a key element of tourism.

The Nillumbik Green Wedge Management Plan addresses the need to systematically assess these landscapes to determine the best ways in which to manage them.

Objectives

1. Protect and enhance remnant vegetation.
2. Protect and enhance sites of faunal and habitat significance and strategic habitat links.
3. Protect and enhance catchments and manage water responsibly.
4. Achieve sustainable land management.
5. Conserve the landscapes of the green wedge for aesthetic, environmental and cultural values.

Strategies

- EN1 Identify and manage biodiversity at a landscape scale for conservation.
- EN2 Support the participation of rural landholders and communities in conserving biodiversity.
- EN3 Discourage further rural residential development of undersized allotments in the green wedge.
- EN4 Pursue the protection and restoration of significant sites and wildlife corridors.
- EN5 Ensure land use and development is addressed in the context of its potential effect on the wider catchment.
- EN6 Conserve biodiversity through implementing sustainable land use planning and encouraging sustainable land management.
- EN7 Minimise the impact of pest plants and animals.
- EN8 Identify, document and protect the character of the diverse landscapes of the Nillumbik Green Wedge.
- EN9 Adopt best practice on a local basis to address climate change.

4.2 Economy

Council is committed to working towards a sustainable Nillumbik Shire. It is committed to protecting the green wedge and to supporting sustainable economic development including tourism, food production and agriculture (*Council Plan 2009–2013*, objectives 2.1.5, 3.1.6, 3.1.2).

The GWMP supports economic activity suited to the green wedge: activity that does not have a negative impact on its environmental values and characteristic landscapes. This is in accordance with the *Council Plan 2009–2013* and *Melbourne 2030*.

Melbourne 2030 recognises that green wedges are ‘...active living areas...’ that provide recreation and tourism opportunities and areas for agricultural production and a range of uses that cannot be located in urban areas, e.g. water storage, quarrying, airports (DPCD 2002, p. 66).

The Nillumbik Green Wedge Management Plan, through its implementation plan, defines what level of business development is appropriate in the Nillumbik Green Wedge and in what areas. The *Economic Development Strategy* being prepared in 2010 will be informed by the GWMP and has responsibility for implementing the key economic actions contained in it.

The Nillumbik Green Wedge depends on its townships for services and employment. The main economic opportunities are in townships inside the urban growth boundaries and not in the rural areas of the green wedge.

The intent of the GWMP is to direct most economic development to areas inside the UGBs to make sure the green wedge values are not adversely affected. Larger scale commercial developments will be located in townships.

A land-use framework for tourism in the green wedge is a priority action of the GWMP. It will identify locations in the Nillumbik Green Wedge where tourism will be encouraged or discouraged and include details of permitted and prohibited uses. For example, to support unstructured recreation such as cycling and walking in the green wedge, and to provide opportunities for ‘coffee and cake’ in a scenic environment, small scale cafes are likely to be permitted in specified areas. Strict limits will be set on capacity and setting in the landscape, and will be defined in the planning scheme.

4.2.1 Agriculture

Farming is entering a new era. Our farmers are facing unprecedented pressures and uncertainties. At the same time, exciting new opportunities are emerging. These changes will be far-reaching and will have a profound and lasting impact on the business of farming in Victoria in the coming decades (Department of Primary Industries 2008, p. 4).

There are approximately 200 active agribusinesses in the Nillumbik Green Wedge creating around 150 jobs (4.9 per cent of Nillumbik Green Wedge

jobs) with further local employment supported through services to the industry (Essential Economics, 2008, p51 -53).

Farming is an important land use in the Nillumbik Green Wedge not only for food production but also for biodiversity, landscape management and cultural values. ²Agriculture occupies 20 per cent of the total Nillumbik Green Wedge land area.

The main finding of the 2010 Outer Suburban/interface Services and Development Committee report: *Inquiry into sustainable development of agribusiness in outer suburban Melbourne* is that agriculture is one of the best uses of Green Wedge land. It manages and preserves the landscape, supports local jobs and local economies, allows access to fresh and healthy food close to consumers and holds opportunities for the management and re-use of waste and water' (Outer Suburban/interface Services and Development Committee 2010, p.121).

The *Nillumbik Land Capability Study* (Woodward and Clyde 1998) recommended retaining land in Arthurs Creek, Doreen and Kangaroo Ground for soil-based agriculture. This means that the land should not be developed or subdivided to the extent that soil-based agricultural activities are no longer technically viable. It recommended that land in the Skyline Road and St Andrews land system should be retained for environmental conservation and be used for agriculture only where the use or development proposed does not compromise the quality of the environment. The report made recommendations as to the minimum lot sizes for both of these areas (Nillumbik Shire Council 2006, p. 24).

The *Nillumbik Land Capability Study* (ibid.) recommended the following uses on agricultural land without significant ³environmental constraint: extensive animal husbandry, horticulture and beekeeping. The report did not support

² Agricultural land comprises properties rated as farms under the council's farm rate. It is classified as follows under the Land Valuation Act 1960:
(1) Not less than 2 hectares in area; (2) it is primarily used for grazing (including agistment), dairying, pig farming, fish farming, tree farming, beekeeping, viticulture, fruit growing or the growing of crops of any kind or for any combination of those activities; and that it is used by a business (a) that has a significant and substantial commercial purpose or character; (b) that seeks to make a profit on a continuous or repetitive basis from its activities on the land; (c) that is making a profit from its activities on the land, or that has a reasonable prospect of making a profit from its activities on the land if it continues to operate in the way it is operating. A number of properties were identified in the green wedge that do not receive the farm rebate but were classified as agricultural land – pigs, poultry, horticulture – for the GWMP (Nillumbik Shire Council 2006, p. 18).

³ Land with significant environmental constraint is classified as land with slopes greater than 35 per cent, with stands of indigenous vegetation or within 100 m of a perennial stream (NSC 2006, p. 23).

⁴intensive animal industries and aquaculture because they are likely to cause detrimental impacts to the environment, landscape quality and rural amenity.

Farming can, generally, operate in the Nillumbik Green Wedge only as a supplement to non-farm incomes. This explains the high incidence of part-time and hobby farming and is borne out by Essential Economics' finding that agricultural activities in the Nillumbik Green Wedge are small scale with low profit margins (2008, pp: 51–53).

Interestingly, while the *Land Capability Study* views proximity to Melbourne as a limiting factor, the *Nillumbik Shire Commodity and Economic Profiles*, identifies it as a benefit in accessing off-farm incomes. The closeness of Melbourne may, therefore, be an important factor in promoting farm sustainability (Nillumbik Shire Council 2006, pp. 23, 25).

Ian McPhail, former Victorian Commissioner for Environmental Sustainability states in his recently published report *State of the Environment Victoria*, that '...there is still a tendency to see agriculture policy as separate from ecosystem management, yet the first is utterly dependent on the second...' (2008, p. iii).

Finding solutions to the challenges faced by agriculture in the Nillumbik Green Wedge may require a shift in the way people view its contribution to society and will mean changing traditional practices. This is no easy task but, with resourcing, partnerships with farmers, the community and different levels of government, it is a real possibility.

Future opportunities for the agricultural sector might include farm stays, development of overnight accommodation, cottage industries, restaurants, wineries, small scale intensive primary production and fresh produce (Essential Economics 2008, p. 7). The current trend towards locally produced fresh foods is a significant opportunity and outlets include farmers markets and, potentially, shops in the townships.

An additional opportunity for farmers to be recognised as land managers is the subject of a 2008 report prepared for Australian Conservation Foundation by the CSIRO: *Delivering on the Promise of Stewardship: Issues in realising the full potential of Environmental Stewardship Payments for landholders and the land*. The report notes that ⁵stewardship payments are used in other parts of the world, notably Europe and North America to help farmers support conservation. It concludes that, managed well, stewardship schemes can

⁴ This is particularly notable because poultry slaughtering is the most important existing agricultural activity in the shire and intensive industries have more scope to provide higher returns per hectare.

⁵ 'Stewardship payments ... are a way of creating positive economic incentives ... to manage...land and activities in ways that improve or maintain ecosystem health.' (CSIRO 2008, p. 9). '... stewardship ... is intended to ensure protection and enhancement of environmental assets on private freehold and leasehold land. It is to be delivered under contract by organisations such as regional catchment groups ... [and will] use ... market-based mechanisms to select participants, including tenders for contracts with farmers and other landholders who can provide services on a cost-effective basis' (ibid.).

make a big difference to landholders and the land and are ‘...an essential part of the next generation of environmental governance arrangements...’ (CSIRO 2008, p. 30). Federal and state governments have established small stewardship schemes. Examples include Bush Tender in Victoria and the federal Environmental Stewardship Programme (ESP).

Given the focus on maintaining valued landscapes, including farmland, this approach may be relevant to Nillumbik and of interest to state or federal government as a pilot project. The justification for doing it is described by Williams and McKenzie as follows:

A key function of agriculture in the future will be to manage the landscape ... the agricultural community can no longer be expected to produce cheap, clean food and fibre as well as provide a free service to maintain all the ecological functions of the landscape. This service should be recognised as a fundamental part of our economy and paid accordingly (p.106).

For more information on agriculture in the Nillumbik Green Wedge, see Appendix 3 in Part 1 – the economy of the Nillumbik Green Wedge.

4.2.2 Tourism

Tourism is not an industry in itself but comprises a range of business activities including accommodation and hospitality, retail and recreation. In Nillumbik it also includes an arts and creative sector. Many tourism businesses serve the needs of both local people and visitors.

Existing tourism in Nillumbik’s Green Wedge includes touring, food, wine, art, heritage, romantic getaways and gourmet weekends. Approximately 150 jobs are associated with accommodation, cafés and restaurants representing 5 per cent of all jobs in the Nillumbik Green Wedge. Some of these jobs are only partly attributable to tourism as they serve local communities as well (Essential Economics 2008, p. 54). In addition, there are opportunities for the development of support businesses for Nillumbik Green Wedge tourism enterprises, such as wine making.

At the moment there is a perceived lack of supporting tourism infrastructure such as cafes, restaurants, craft shops and conference facilities. Local businesses believe these have the potential to make the Nillumbik Green Wedge a destination rather than a place that visitors drive through on their way to other locations (Essential Economics 2008, pp. 8, 11, 70).

The Nillumbik Green Wedge Management Plan takes a positive view of tourism possibilities provided they are well planned and complement environmental values and the area’s cultural heritage.

Enabling enjoyment of the environment can be achieved through sensitively planned recreation and tourism activities of a scale and type that are in keeping with, and not detrimental to, the special qualities of the Nillumbik Green Wedge.

The underlying principle [of sustainable tourism] is the need to recognise and protect the values of our special natural and cultural places ... (Department of Environment and Heritage 2004, p. 2).

Tourism in Nillumbik will focus on unstructured activities and will be low impact and sustainable. It will be designed to enhance enjoyment through experience of the environment and an understanding of its significance. This, in turn, might increase support for its conservation.

There are sensitive environmental areas in the green wedge where tourism will not be encouraged, but there are also areas that are well suited to carefully planned tourism development. Opportunities include ecotourism⁶, walking and nature conservation activities, cultural heritage trails, health and wellness experiences and opportunities to purchase local produce, arts and crafts. The realisation of the regional trails network is a priority.

The tourism land use framework is to be completed as a priority action and will clearly define the types of opportunities that are acceptable in the green wedge.

4.2.3 Business development

Potential opportunities identified in research with Nillumbik Green Wedge businesses indicate that the main drivers for economic growth are perceived as population ⁷growth; the area's clean and green image; arts and cultural facilities; more cafés, restaurants and wineries; niche retailing such as alternative health; expansion of home-based businesses and the development of small scale intensive primary production (Essential Economics 2008, p. xii).

The Nillumbik Green Wedge depends on its townships for services and employment. The main economic opportunities, including larger scale commercial development, are in townships inside the urban growth boundaries and not in the rural areas of the green wedge.

A key issue for the GWMP is to consider how much development in the townships is needed to support economic development and whether such development will retain the character of the individual places. In other words, what extent of development is desirable and sustainable? The character and distinctiveness of the green wedge townships and settlements is very important. Any development will be consistent with existing structure plans (currently in Hurstbridge and Wattle Glen). Township strategies, including

⁶ Ecologically sustainable tourism with a primary focus on experiencing natural areas that fosters environmental and cultural understanding, appreciation and conservation', Ecotourism Australia

⁷ It is unlikely that there will be population growth in the green wedge. Essential Economics' report shows a decrease in population. However, Whittlesea growth corridor on the western boundary of the green wedge, is Victoria's fastest growing municipality.

economic development opportunities, will be produced for St Andrews, Panton Hill, Kangaroo Ground, Yarrambat, Christmas Hills and Strathewen.

Objectives

1. Improve the economic viability of the Nillumbik Green Wedge and its townships and settlements: Hurstbridge, Panton Hill, St Andrews, Yarrambat, Arthurs Creek and Kangaroo Ground.
2. Expand tourism opportunities compatible with the green wedge, in green wedge townships and in identified green wedge locations (these will be identified in the proposed land use framework Action E4.1).
3. Ensure that agriculture remains technically viable in the green wedge.

Strategies

- E1 Achieve economic development in townships of St Andrews, Hurstbridge and Panton Hill and in the green wedge, in keeping with township structure plans.
- E2 Prioritise expansion in the following identified business sectors: home-based business and services to business in the green wedge.
- E3 Support only low impact sustainable tourism in the green wedge.
- E4 Provide information about what types of tourism business can be established in the green wedge and where.
- E5 Provide for land uses that encourage expanded, compatible, tourism activity in the green wedge and its townships in keeping with township structure plans.
- E6 Retain existing agricultural land for soil-based agricultural production.
- E7 Support agriculture in all its forms whether it is broadacre or hobby farming.
- E8 Discourage fragmentation of existing agricultural land.
- E9 Discourage rural residential and small lot development on rural land.

4.3 People and communities

Many of the factors influencing health lie in the complex social, economic and physical environments in which people live... (DHS 2001, p. 10).

This section concerns people and communities: where and how people live, how they travel, where they work and what level of services and infrastructure they can reasonably expect. It also concerns opportunities for recreation and enjoyment of the Nillumbik Green Wedge by residents and visitors.

Nillumbik Shire Council's *Municipal Health and Wellbeing Plan* (2010–2013) incorporates the *Environments for Health Framework 2001*, which reflects a 'social model of health' and supports local government to develop approaches to land use, infrastructure planning, the development and delivery of services, and community partnerships that recognise the relationship between people's health and wellbeing and their environment. Local government has an identified role in creating and maintaining environments that can have a positive influence on the health of local communities. This framework, outlined below, is the means by which health and wellbeing can be achieved:

- built environment – infrastructure including roads and recreation spaces
- social environment – support services and community connectedness
- economic environment – a thriving economy and employment opportunities
- natural environment – clean air, water and conservation of the natural environment.

The strategies in the Nillumbik Green Wedge Management Plan affect each of these areas and, combined, make a contribution to the wellbeing of people in the Nillumbik and wider Melbourne communities. This section deals specifically with the built and social environments. It has five elements: settlement, recreation, cultural heritage, transport and infrastructure, and strengthening communities.

4.3.1 Settlement

Conservation of the environment, landscapes, agriculture and rural character of the green wedge and its townships is a stated priority of the GWMP. Incremental residential development in the green wedge and on small lots is a threat to these values.

Since 1971, in the face of increasing urban development pressures, non-urban breaks have been maintained between townships by planning policies and controls. These measures aim to provide a sense of identity and community for each township and preserve the rural character of much of the shire. The existing settlement pattern in the shire can be maintained if non-

urban breaks between urban areas and townships, and between townships, are retained and enhanced (*Shire of Nillumbik Municipal Strategic Statement*). This approach is consistent with *Melbourne 2030* and council is committed to the placement of the urban growth boundary in accordance with state government policy.

Rural residential land use is defined in the *Green Wedge Background Paper* as a residential use in a rural environment where a significant proportion of household income is not gained from rural pursuits. It ranges from hobby-farms to lots covered with native vegetation (p. 12). Approximately 47 per cent of the Nillumbik Green Wedge is rural residential living, a higher percentage than any other land use.

The impact of rural residential development is incremental. Cumulatively it has the potential to threaten the green wedge environment and landscapes. Impacts are as follows.

Loss of vegetation cover

Every new development results in loss of vegetation. The introduction of Clause 52.43 interim measures for bushfire protection allows vegetation removal in the aftermath of the February 2009 bushfires and has added to the potential to change the landscapes of the green wedge. No matter how small each individual clearance, it has a cumulative and potentially negative impact on the green wedge environment and landscapes.

Retention of agricultural land

Rural residential living has an impact on agriculture because land values are based on residential value. This makes it harder for farmers to afford rates and, potentially, makes selling up a more attractive proposition than keeping the farm. It also contributes to land fragmentation resulting in the loss of productive land for future agricultural use.

Discord between rural residential and agricultural use

The ability of farmers to carry out their everyday work can be affected as urban people move into rural areas and find it difficult to tolerate agricultural practices.

Dispersed rural living

Rural residential land use leads to more housing in dispersed rural areas. It does not reinforce the intended role of townships as hubs in the green wedge.

Measures put in place to discourage rural residential and small lot development and to encourage land consolidation have been largely unsuccessful in practice: Clauses 22.02 (sub-division in green wedge areas) and 22.03 (residential use and development on small lots in the green wedge). To continue with this policy aim council will need to introduce tougher controls and, potentially, incentives. This is likely to be something that state government will also need to consider as it affects all green wedges to a greater or lesser extent.

The development of small lots – below the minimum sub-division allowed in a particular zone – is of particular concern. In the Nillumbik Green Wedge,

81 per cent of existing lots are already sub-divided below the minimum lot size. It is estimated that there are approximately 710 under-sized lots which could be developed by 2031 (Essential Economics 2008, p. 33).

Small lot development is inconsistent with the objective of *State Planning Policy Framework* (SPPF) Clause 12.02 'Better management of metropolitan growth' which is:

To locate metropolitan growth close to transport corridors and services and provide efficient and effective infrastructure to create benefits for sustainability while protecting primary production, major sources of raw materials and valued environmental areas.

The Shire of Nillumbik is home to a growing number of single person households including those who wish to age in their communities. Rural residential living does not contribute to the identified housing need for smaller houses close to transport and services, which is suited to this group of the population.

4.3.2 Recreation

Promoting community wellbeing in the Nillumbik Green Wedge involves providing physical and intellectual activities including open space, sports facilities, libraries, arts and cultural activities.

The rural areas provide an ideal setting for establishing a diversity of recreational and tourist opportunities that protect the natural environment, cultural heritage and landscapes (Nillumbik Shire Council 2005, p. iv).

Tourism is closely allied to recreation in that opportunities for visitors are also available to local communities and vice versa.

Council's Open Space and Recreation Trails strategies (2007 under review in 2010) are of most significance to the vision and directions of the Nillumbik Green Wedge Management Plan.

The *Open Space Strategy* (2005) relates to all areas of public open space including reserves with identified conservation objectives such as wetlands, waterways and land with remnant vegetation. It is influenced by *Linking People and Spaces* (Parks Victoria 2002) which has as its vision: 'A linked network of open space for all to enjoy as a part of everyday life, preserved and enhanced into the future'.

The primary focus of Nillumbik's *Open Space Strategy* is on '... open space used for passive recreation⁸ and conservation purposes rather than organised sports' (Nillumbik Shire Council 2005, p. i).

⁸ includes non-organised land uses including informal play, walking, sitting, bird watching (Nillumbik Shire Council 2005, p. i).

A survey of 3000 households in the year 2000 indicated that the top three areas for improving recreation opportunities were paths, parks and bushland, and conservation areas. The same survey indicated that the biggest need is for protecting remnant vegetation, controlling weeds, providing information about what is available and encouraging use and appreciation of parks and the environment. People with disabilities indicated that council could do more to support access to parks. It concluded that funding the Nillumbik Green Wedge vision is a key consideration in managing and developing open space to meet community demand (Jeavons and Jeavons 2000, pp. 49–54).

Nillumbik's trail network is a particular focus for achieving the recreation vision of the green wedge management plan with an emphasis on:

- Diamond Creek Trail
- Maroondah Aqueduct and Pipeline Trails
- Kangaroo Ground to Panton Hill Trail.

4.3.3 Cultural heritage

Places of cultural significance enrich people's lives, often providing a deep and inspirational sense of connection to community and landscape, to the past and to lived experiences ... [they tell] us about who we are and the past that has formed us and the Australian landscape. (Walker & Marquis-Kyle 2004, p. 10).

Cultural heritage is made up of many components including the way communities live, their history, traditions and values. The cultural heritage of the Shire of Nillumbik defines its character and identity, helping to tell the story of the area, its landscape and people through evidence left by generations of people, both Aboriginal and European.

Cultural heritage is a key contributor to sense of place and wellbeing. It includes buildings, landscapes, objects and intangible elements such as stories, traditions and ways of living. Nillumbik building styles, like the famous mud brick, and its artistic tradition are important examples.

It is important to protect heritage places because: they help to strengthen personal and community identity; we want to pass them on to future generations; there are social, spiritual, ethical and legal obligations to do so. The GWMP is committed to the identification and protection of cultural heritage in the green wedge.

4.3.4 Transport and infrastructure

The vision ... is that car traffic growth in the shire will be slowed due to walking and cycling trips ... [and] ... public transport trips (Nillumbik Shire Council 2001, p. 4).

The relative lack of public transport, population spread and high travelling outside the municipality for work means that Nillumbik Green Wedge residents have a high level of car ownership (and dependence). Thirty-six per

cent of Nillumbik Green Wedge households own three or more cars. Private car use is likely to continue and will be augmented by any future dispersed housing where there is no significant public transport infrastructure planned (Essential Economics 2008, p. 21, 35).

Car-dependent Nillumbik creates costs for road repair and contributes to congested roads. More than 75 per cent of people commute to other locations for work (Essential Economics 2008, p. 50) – the highest rate of daily travel to work places outside the shire of all the interface councils (Parliament of Victoria 2008, p. 314). This raises issues with regard to the environment, particularly climate change and air pollution. It is important to focus effort on improving public transport alternatives.

Providing transport options is important to the delivery of sustainable tourism and recreation with opportunities to encourage people to park at designated 'park and ride' points and continue their journey along the trails network, by train or on foot/bicycle.

4.3.5 Strengthening communities

The GWMP emphasises the need for community connectedness, diversity and involvement in managing the green wedge.

It is important to note that infrastructure not only covers the physical infrastructure we are familiar with such as roads and waste collection but also extends to social infrastructure and services, which support and connect local communities. Examples include: local and state government-provided programs like childcare, healthcare, pre-schools, schools, and youth services, as well as sportsgrounds and facilities. It also includes commercially provided services such as general stores, post offices and pubs. In short: everything that helps a community to thrive.

Objectives

1. Provide for housing and a population which meets the social and economic aims of the green wedge and its townships without compromising environmental, landscape or neighbourhood character values or undermining agricultural viability.
2. Maintain non-urban breaks between existing urban areas and townships.
3. Work towards creating socially sustainable communities.
4. Conserve local arts, heritage, culture and township/settlement character.
5. Promote improved access to the green wedge.

Strategies

- PC1 Discourage further residential development of under-sized allotments in the green wedge.
- PC2 Encourage a diversity of housing types in townships of St Andrews, Hurstbridge, Panton Hill and settlements of Kangaroo Ground, Yarrambat and Arthurs Creek to provide for smaller household sizes and ageing in communities.
- PC3 Support the placement of the urban growth boundary in accordance with state government policy.
- PC4 Encourage high quality development that achieves the preferred character for rural and urban landscapes.
- PC5 Identify and conserve the cultural heritage of the Nillumbik Green Wedge.
- PC6 Support volunteering.
- PC7 Encourage actions that contribute to sustainable communities including local food production, transport and social connectedness.
- PC8 Support alternative forms of transport to the private, driver-only, car.
- PC9 Support renewable energy initiatives in Nillumbik Green Wedge and township communities.
- PC10 Promote and expand passive recreation opportunities.
- PC11 Increase opportunities to understand the Nillumbik Green Wedge.

4.4 Governance

Governance is the process of decision making and the process by which decisions are implemented (or not implemented).⁹

There are 12 green wedges around Melbourne spanning 17 municipalities. Under current planning and governance arrangements, each of the 12 green wedges, including Nillumbik's, will have its own management plan and will be managed by its own local government.

Delivering the green wedge management plan requires strong, active and committed governance in order to achieve its objectives. Community members have indicated that council needs to demonstrate proactive leadership in partnership with the community, other councils and organisations in delivering the plan.

In the short-to-medium term the GWMP should be administered through the current governance arrangements but, in the longer term, an alternative model might be considered.

This model emerged from discussions with the community advisory group (see Part 1 section 5.6 and Appendix 4). It would see neighbouring green wedges unified into regional green wedges and managed by a separate authority. In this model, all costs of environmental planning and management would be met by the state government.

Objectives

1. Implement the Nillumbik Green Wedge Management Plan.
2. Work collaboratively and transparently with community and stakeholders to find the best ways in which to deliver the GWMP.

Strategies

- GO1 Manage Nillumbik's Green Wedge in accordance with the GWMP and its guiding principles.

⁹ <<http://www.unescap.org/pdd/prs/ProjectActivities/Ongoing/gg/governance.asp>>

5. Implementation plan

Achieving the aims and objectives of the Nillumbik Green Wedge Management Plan requires a whole-of-council approach and partnerships with community and external agencies.

This implementation plan is aligned to council plan goals and set out under the headings: Economic, Environment, People and communities, and Governance.

Actions are prioritised as high, medium or low, with low priority actions being subject to funding. The council section with lead responsibility for a particular action is identified and will be responsible for developing a detailed plan allocating tasks and delivering against the GWMP objectives.

The implementation plan covers a 15-year period and will be reviewed every four years.

Implementation of the GWMP is dependent on available resources, particularly for new initiatives of which there are many.

Effective and full implementation requires that overall coordination and oversight of the plan be undertaken by strategic planning and that there be a clear understanding of and commitment to the plan by council and the Nillumbik community.

All actions and their implementation will be guided by the GWMP Guiding Principles (page 2).

GWMP Actions

Key

Council

Building Services	BS
Communications	C
Corporate Services	CS
Edendale Farm	EF
Environment and Strategic Planning	ESP
Environmental Planning	EP
Environmental Works	EW
Finance	F
Infrastructure Development	ID
Infrastructure Maintenance	IM
Leisure and Community Services	LC
Major Projects and Business Services	ECODEV
Statutory Planning	StatP
Strategic Planning	SP

Plan actions are rated according to the following priorities

High (immediate to short term)	Year 1- 5 (2010-2014)	
Medium (medium term)	Year 5 -10 (2014-2019)	
Long term (Subject to funding)	Year 10 -15 (2020 – 2025)	

External agencies

Country Fire Authority	CFA
Department of Planning and Community Development	DPCD
Department of Primary Industries	DPI
Department of Sustainability and Environment	DSE
Heritage Victoria	HV
Interface Councils	IC
Melbourne Water	MW
Nillumbik Tourism Association	NTA
Port Philip and Westernport Catchment Management Authority	CMA
Southern Water	SW
Tourism Victoria	TV
Victorian Farmers Federation	VFF

Council plan objectives	GWMP Aim	Objectives	Strategies	Actions			Priority				
2.1.5 Recognise our responsibility in managing and protecting the green wedge					responsibility	partners	High	medium	long term	ongoing	
ENVIRONMENT 2.1.1 support, inform and encourage cooperation between land owners on how to manage their land. 2.1.2 Continue to reassess and improve maintenance and management of vegetation on council land in relation to fire prevention and environmental management. 2.1.5 Recognise our responsibility in managing and protecting the green wedge. 2.1.10 Improve storm water and domestic waste water management to achieve higher water quality and reuse opportunities. 2.1.11 Maintain and improve our drainage systems and other water infrastructure. 2.1.12 Support volunteer and community organisations to undertake environmental programs. 2.1.13 Effectively use council's resources in providing environmental education facilities and programs.	Aim 1 Conserve and enhance the natural values, landscapes and cultural heritage of the Nillumbik Green Wedge.	1. Protect and enhance remnant vegetation.	EN1 Identify and manage biodiversity at a landscape scale for conservation.	EN1.1 Update council's 2001 Environmental Strategy including an investigation of the applicability of the findings and recommendations of the Victorian <i>State of the Environment</i> Report 2008 to the environmental sustainability of the Nillumbik Green Wedge.E3	EP						
				EN1.2 Conduct a biodiversity value assessment as part of a State of the Environment report for Nillumbik. Use the Victorian <i>State of the Environment</i> report as a guide or template.	EP						
				EN1.3 As part of the above assessment, identify actual and potential wildlife corridors and valuable habitat and then ensure that planning controls and incentives reflect the need to protect these areas.	EP	EW					
				EN1.4 Implement NET Gain policies and advocate to state government for greater clarity around these policies.	StatP	EP					
				EN1.5 Investigate the application of ecoMarket principles in Nillumbik (ecoMarket is the term used to describe a range of market-based systems aimed at addressing environmental decline).	EP	ECODEV					
				EN1.6 Continue to investigate the adequacy of planning controls relating to environmental protection and the efficiency of their implementation.	SP	EP					
				EN1.7 Investigate whether there are other settled areas suitable for application of the Environmental Living Zone (SUZ2) and assess the value of planning scheme amendments.	SP	EP					
			EN2 Support the participation of rural landholders and communities in conserving biodiversity.	EN2.1 Investigate how incentives can be used to ensure property rating does not over-ride the agricultural value of land.	EP						
				EN2.2 Implement existing land care programs e.g. community rabbit control, schools environmental education.	EP						√
				EN2.3 Complete the assessment of council's land management incentives programs commenced in 2009 and implement findings.	EP	SP					
				EN2.4 Investigate the extension of the Trust for Nature Covenants in the green wedge areas	EP	TfN					
			EN3 Discourage further rural residential development of undersized allotments in the green wedge.	Action PC1.1	SP						

Council plan objectives	GWMP Aim	Objectives	Strategies	Actions			Priority		
				EN3.2 Investigate the feasibility of planning permit conditions defining a maximum footprint for domestic areas on lots containing high value biodiversity.	StratP	SP			
		2. Protect and enhance sites of faunal and habitat significance and strategic habitat links.	EN4 Pursue the protection and restoration of significant sites and wildlife corridors.	EN4.1 Continue to provide incentives and grants for re-planting vegetation and rehabilitation.	EP				√
				EN4.2 Complete an up-to-date survey of faunal and habitat significance of the Green wedge including roadsides as an update of the NEROC report. Provide the outputs to the State Government to inform its biosites register and as a basis for future updates of the Environmental Significance Overlay	EP				
				EN4.3 Seek partnerships with and involve neighbouring municipalities and agencies in land and biodiversity management.	EP	Landcare groups, adjoining councils			
				EN4.4 Investigate opportunities to reduce light pollution in rural areas including consideration of light emissions of new developments and associated works.	SP	Stat P			
				EN4.5 Investigate the feasibility of pursuing Habitat 141-type initiatives which reconnect landscapes over a large geographic area. [Habitat 141's vision is to work with private and public land managers, agencies, communities, governments, land owners and farmers to conserve, restore and re-connect eco-systems and habitats over a 700 km stretch of land straddling the SA, NSW and Victorian borders].	EP	SP			
		3. Protect and enhance catchments and manage water responsibly.	EN5 Ensure land use and development is addressed in the context of its potential effect on the wider catchment.	EN5.1 Utilise water sensitive urban design in developments where this is possible.	ID	StatP			√
				EN5.2 Investigate the appropriateness of further water extraction and diversion including dams and bores, given the incremental impact on environmental flows in waterways with reduced rainfall and climate change impacts.	EP	MW, SW			
				EN5.3 Work with Melbourne Water to improve water conservation (supply, use, recycling) in all spheres of human activity.	EP	MW			
				EN5.4 Implement the Nillumbik sustainable water plan.	EP				
				EN5.5 Participate in Melbourne Water's streamflow management plan review process.	EP				
		4. Achieve sustainable land management.	EN6 Conserve biodiversity by implementing sustainable land use planning and encouraging sustainable land management.	EN6.1 In priority areas for biodiversity, investigate applying permit conditions to require land management plans.	StatP	EP, SP			
				EN6.2 Review the Environmental Significance Overlay and its schedules to ensure that protection of significant sites is up to date and to investigate the provision of an ESO buffer zone. See also actions EN1.1, EN1.2, EN1.3.	SP				
				EN6.3 Advocate to the Department of Primary Industries for increased support for land management, advice and financial resources.	EP				
				EN6.4 Provide an advisory service for land management which is targeted to areas of identified need.	EP				
				EN6.5 Investigate the effectiveness of enforcement.	EP				
				EN6.6 Develop a model pilot of sustainable practice/whole farm planning as a beacon-type project based on existing DPI pilots (investigate environmental management systems with farmers).	EP	DPI, 'friends of' groups			
				EN6.7 Promote the involvement of Nillumbik communities in Landcare and 'friends of' groups.	EP	EW, C			√

Council plan objectives	GWMP Aim	Objectives	Strategies	Actions			Priority		
				EN6.8 Investigate the applicability of current Melbourne University research being undertaken by Nicole Reichelt on Landcare and social networks. Implement outcomes where appropriate.	EP	LC			
				EN6.9 Implement education programs for sustainable land management including horse, cattle and alpaca grazing.	EP	EF			
				EN6.10 Investigate opportunities to conduct ecological burns on private and public land.	EP	IM, EW, CFA, DPCD			
				EN6.11 Investigate a schools landcare stewardship program for public open spaces (fit in with guidelines from the ResourceSmart schools program).	EP	EW, EF			
			EN7 Minimise the impact of pest plants and animals.	EN7.1 Implement the Weed Action Plan 2008.	EP	EW			
				EN7.2 Work with state government agencies such as Melbourne Water, in coordinating pest plant and animal programs.	EP,	MW,PV, DPI, DSE			
				EN7.3 Implement the Nillumbik Rabbit Action Plan.	EP				
				EN7.4 Investigate the development of a policy to restrict planting of environmental weeds within bushland environments.	EP	EW			
				EN7.5 Continue to investigate and implement improvements to weed and feral animal control programs.	EP	EW			
				EN7.6 Advocate to state government to conduct starling and indian myna control programs.	EP				
		5. Conserve the landscapes of the green wedge for aesthetic, environmental and cultural values.	EN8 Identify, document and protect the character of the diverse landscapes of the green wedge	EN8.1 Complete an assessment of the Green Wedge Landscape Character and implement planning controls and other recommendations arising from this study.	SP				
			EN9 Adopt best practice on a local basis to address climate change	EN9.1 Implement the Climate Change Action Plan.	EP				
ECONOMY 3.1.1 Support opportunities that will generate local jobs and business activities. 3.1.2 Support appropriate sustainable economic development in the green wedge. 3.1.4 Support measures that facilitate the expansion and enhancement of the commercial economic base and local employment opportunities. 3.1.6 Facilitate agricultural tourism activity across the shire. 3.1.7 Encourage local food production and support the agriculture sector. 3.1.8 Identify opportunities to achieve economic benefits based on Nillumbik's environment, skills and culture.	Aim 4 Achieve a diverse economic base in the green wedge which helps local communities to thrive but which does not impact negatively on natural and cultural values or the valued character of towns, settlements and landscapes.B2	1. Improve the economic viability of the Nillumbik Green Wedge and its townships and settlements: Hurstbridge, Pantan Hill, St Andrews, Yarrambat, Arthurs Creek and Kangaroo Ground.	E1 Achieve economic development in townships of St Andrews, Hurstbridge and Pantan Hill and in the geen wedge in keeping with township structure plans.	E1.1 Undertake township strategies for St Andrews, Pantan Hill, Kangaroo Ground, Yarrambat, Arthurs Creek, Christmas Hills and Strathewen. As each strategy is completed, a series of recommendations will be made in relation to the planning provisions for each area, to give effect to the desired outcomes for each township.	SP				
				E1.2 Review the current planning scheme to facilitate increased business opportunities in the green wedge which are compatible with green wedge values. This includes clarifying the full extent of 'in conjunction use'; investigation into whether rural zones in addition to the Rural Conservation and Green Wedge Zones are needed in the green wedge to broaden the range of uses permitted and investigation of the intensity of permitted uses in the existing zones around townships.	SP	ECODEV ; DPCD			
				E1.3 Review and pursue as appropriate, the recommendations of the Outer Suburban/interface Services and Development Committee <i>Inquiry into local economic development in outer suburban Melbourne</i> and the Victorian Government response to its recommendations. E49	ECODE V				
			E2 Prioritise expansion in the following identified business sectors: home-based business and services to business in the green wedge.	E2.1 Complete the Economic Development Strategy (2010). Review the Economic Development Strategy to ensure it aligns with the objectives and actions in the GWMP.	ECODE V	SP. EP			

Council plan objectives	GWMP Aim	Objectives	Strategies	Actions			Priority			
				E2.2 Complete a comprehensive economic analysis of the green wedge's environmental assets to assess their contribution to the economy of the Shire and to the well being of local and Melbourne communities.	SP	EP				
				E2.3 Promote home-based business and services to business which are compatible with amenity of green wedge areas (part of economic development strategy).	ECODE V					
				E2.4 As part of the economic development strategy, consider opportunities for enterprises that embrace the principles of 'intelligent communities'. These communities use high speed broadband to support local enterprises that may have national and international impact.	ECODE V					
			E3 Support only low impact, sustainable tourism for the green wedge.	E3.1 Complete a sustainable tourism plan for the green wedge.	ECODE V	NTA, TV				
			E4 Provide information with regard to what types of tourism business can be established in the green wedge and where.	E4.1 Prepare a land use framework for tourism to be incorporated into the Nillumbik Planning Scheme. This will include detailed mapping of locations where tourism will be encouraged and discouraged and will include details of permitted and prohibited uses. It will also include the number, type and location.	SP					
		2. Expand tourism opportunities compatible with the green wedge, in green wedge townships and in identified green wedge locations (these will be identified in the land use framework Action E4.1).	E5 Provide for land uses which encourage expanded compatible, tourism activity in the green wedge and its townships (in keeping with township structure plans).	E5.1 Assess the current level of tourism-related accommodation provision in the green wedge – number of beds, location etc. <u>If a shortfall is indicated</u> e.g. camping, youth hostel...pursue opportunities to increase appropriate tourism-related accommodation in identified green wedge locations.	ECODE V					
				See action E4.1 (land use framework).						
				E5.2 Explore models for 'ecotourism' or back-to-nature tourism, including Italy for its agritourism.	ECODE V					
		3. Ensure that agriculture remains technically viable in the green wedge.	E6 Retain existing agricultural land for soil-based agricultural production.	E6.1 Investigate the best ways in which to provide an advisory service to farmers on business opportunities and to farmers and major land owners on land use and land management including whole farm and landscape scale management (potential urban fringe pilot with DPI which is already running pilots of this nature).	EP	SP, ECODEV, VFF, DP				
				E6.2 Explore options to support growth of locally based food production.	ECODE V					
				E6.3 Seek funding and commission an update to the 1998 land capability study.	SP	EP				
				E6.4 Investigate the opportunity for and undertake pilot if it seems viable, for land stewardship payments (see Australian Conservation Foundation report: <i>Delivering on the Promise of Stewardship: Issues in realising the full potential of Environmental Stewardship Payments for Landholders and the Land</i> , CSIRO 2008).	EP	SP, DPI, DPCD				
				E6.5 Undertake appropriate monitoring of impacts of climate change, especially on land capability and water resources and assist the agricultural sector to adapt where necessary. See also action E6.1.	EP					
				E6.6 Review the Victorian Parliamentary report: <i>Inquiry into sustainable development of agriculture in outer suburban Melbourne</i> and the Victorian Government response to its recommendations, to inform the GWMP and council's economic development plan. Implement as appropriate.	ECODE V, SP	EP, VFF				

Council plan objectives	GWMP Aim	Objectives	Strategies	Actions			Priority			
			E7 Support agriculture in all its forms in the green wedge – whether it is broadacre or hobby farming.	E7.1 Investigate and implement opportunities to support new, economically viable, agricultural opportunities in the green wedge.	ECODE V	VFF				
				E7.2 Advocate to state government for support for agricultural enterprises.	ECODE V	IC, VFF				
				E7.3 Investigate funding for development of a brand and marketing strategy aimed at attracting growers and visitors to the region. This is allied to the sustainable tourism plan action 3.1.	ECODE V	C+G2				
				See action 6.6.						
			E8 Discourage fragmentation of existing agricultural land.	See action PC1.1	SP, StatP					
			E9 Discourage rural residential and small lot development on rural land.	See action PC1.1,	SP, StatP					
PEOPLE AND COMMUNITY 2.1.4 Improve the presentation of our open space areas. 2.1.15 Improve traffic management throughout the shire. 2.1.17 Advocate for improved public transport systems that are accessible and encourage increased use. 2.1.19 Encourage high quality design that is reflective of the shire's character and history. 2.1.20 Promote sustainable building and design practices. 2.1.21 Encourage medium density development that is consistent with local character and council's strategic direction.	Aim 2 Increase local and wider community understanding and enjoyment of the special nature of the Nillumbik Green Wedge. Aim 3 Maintain strong, connected and diverse communities.	1. Provide for housing and a population which meets the social and economic aims of the green wedge and its townships without compromising environmental, landscape or neighbourhood character values or undermining agricultural viability	PC1 Discourage further rural residential development on under-sized allotments in the green wedge.	PC1.1 Prepare a concise paper on small lot development to recommend actions to discourage the further rural residential development of small lots in the green wedge. It will clarify the extent of the small lot development issue in the green wedge. It will be prepared in the context of the findings of the 2009 Victorian Bushfires Royal Commission and the inquiry into sustainable development of agriculture in outer suburban Melbourne.	SP					
		2. Maintain non-urban breaks between existing urban areas and townships.	PC2 Encourage a diversity of housing types in townships of St Andrews, Hurstbridge, Panton Hill and settlements of Kangaroo Ground, Yarrambat and Arthurs Creek to provide for smaller household sizes and ageing in communities.	PC2.1 Review planning policies in order to encourage increased diversity of housing in green wedge townships of Hurstbridge, Panton Hill and St Andrews and the settlements of Kangaroo Ground, Yarrambat and Arthurs Creek to accommodate a range of household sizes. This is in line with existing structure plans or, where they do not exist, involves producing them in consultation with the community.	SP					
			PC3 Support the placement of the urban growth boundary in accordance with state government policy.	PC3.1 Prepare a land use framework for settlement to be incorporated into the Nillumbik Planning Scheme. This will include detailed mapping of locations where housing will be encouraged and discouraged and include details of permitted and prohibited uses.	SP	EP				
	Aim 1 Conserve and enhance the natural values, landscapes and cultural heritage of the Nillumbik Green Wedge.	4. Conserve local arts, heritage, culture and the character of townships and settlements.	PC4 Encourage high quality development that achieves the preferred character for rural and urban landscapes.	PC4.1 Finalise draft urban design guidelines for Hurstbridge.	SP					

Council plan objectives	GWMP Aim	Objectives	Strategies	Actions			Priority		
				PC4.2 Prepare urban design guidelines for Panton Hill and St Andrews.	SP				
				PC4.3 Develop design policies for the green wedge townships of Hurstbridge, Panton Hill, St Andrews and settlements of Kangaroo Ground, Yarrambat and Arthurs Creek.	SP				
				PC4.4 Promote the use of traditional construction techniques and styles e.g. mud brick and rammed earth in support of the traditional 'Nillumbik style'.	Stat P,	SP			√
			PC5 Identify and conserve the cultural heritage of the Nillumbik Green Wedge.	PC5.1 Work with communities to complete council's cultural plan. Content to include conservation and promotion of the cultural heritage of the green wedge including Indigenous culture and heritage.	LC	SP			√
				PC5.2 Develop a heritage strategy for the Shire of Nillumbik which includes the green wedge and its townships.	SP				
				PC5.3 Apply a Design and Development Overlay and Heritage Overlay to Hurstbridge township to protect the character of the streetscape.	SP				
				See actions in the Environment section of the Implementation Plan.					
		3. Work towards creating socially sustainable communities.	PC6 Support volunteering.	PC6.1 Work with communities to implement the volunteers policy and strategy.	LC				
			PC7 Encourage actions that contribute to sustainable communities including local food production, transport and social connectedness.	PC7.1 Identify opportunities to support community sustainable agriculture.	ECODE V	EP, EF			
				PC7.2 Support programs that reduce food and shopping miles.	ECODE V	EP, EF			
				PC7.3 Work with communities to identify the need for, and to establish, meeting places in all green wedge townships.	LC				
				PC7.4 Work with communities and service providers to locate existing and/or provide new facilities for delivery of healthcare and other services in the community. Consider the model established at the Hurstbridge Hub.	LC				
				PC7.5 On completion of the current shire-wide analysis of children and family services, which will identify issues in rural and township/settlements of the green wedge, develop a strategy to address those issues.	LC				
				PC7.6 Work with communities to complete and implement the <i>Active ageing strategy</i> .	LC				
				PC 7.7 Develop and implement programs to support community resilience and adaptation to the social, health and community impact of climate change.	LC	EP, EF			
			PC8 Support alternative forms of transport to the private, driver only, car.	PC8.1 Work with communities to seek opportunities for expanding transport connections including car pooling, buses and park and ride schemes.	LC				
				PC8.2 Advocate for more accessible public transport systems, particularly those recommended in the state government's <i>North East integrated transport systems strategy 2007</i> and <i>Meeting our Transport Challenges (2006)</i> as related to the green wedge.	LC				
				PC8.3 Expand and improve the safety of off-road bicycle routes and walking paths in the green wedge, particularly those linking townships and tourism destinations and strategic public transport systems. In particular, consider connections with Whittlesea's path networks providing car-free east-west links.	LC				
				PC8.4 Investigate the feasibility of introducing park and ride areas which link public transport to destinations within the green wedge e.g. recreation trails, shops, markets and other tourism and recreation opportunities.	LC	ID, SP, Metro and other transport providers			

Council plan objectives	GWMP Aim	Objectives	Strategies	Actions			Priority		
			PC9 Support renewable energy initiatives in Nillumbik Green Wedge and township communities.	PC9.1 Work with communities to enable them to source renewable energy generation for green wedge townships.	EP				
				PC9.2 Investigate the applicability to Nillumbik of renewable energy initiatives such as the Hepburn Springs Project and Bendigo solar city project.	EP				
		5 Promote improved access to the green wedge.	PC10 Promote and expand passive recreation opportunities.	PC10.1 Implement Nillumbik Shire Council's <i>Recreation Trails Strategy</i> (2001) with emphasis on the extension to the Diamond Creek Trail, Pipeline Trail (Allendale to Diamond Creek-Hurstbridge Road) and the Wattle Glen to Kinglake Trail.	LC				
				PC10.2 Continue investigation into the proposed Maroondah Aqueduct Trail as an opportunity to create an iconic recreation and tourism opportunity for Melbourne.	LC,	MW, adjoining councils, HV			
				PC10.3 Implement Nillumbik Shire Council's Open Space Strategy (2005) with particular emphasis on rural open spaces and on the development of trails networks. Include investigation of the feasibility of a park and ride scheme linked to the trails network as raised in PC8.4 above.	LC				
				PC10.4 Investigate establishing a regional trails network – walking, riding and cycling – so that they cross the entire green wedge and link with adjoining green wedges and municipalities of Yarra Ranges, Murrindindi, Whittlesea, Manningham and Banyule. Include an analysis of the economic benefits including potential visitor spend (relevant also to economic objectives).	LC,	TV, NTA, adjoining councils, HV, MW			
			PC11 increase opportunities to understand the Nillumbik Green wedge.	PC11.1 Investigate the production of a green wedge interpretation strategy (with individual plans for each of the recreation trails and council-owned reserves which might include maps, self-guided walks, on and off site interpretation).	ESP	C, LC			
				PC11.2 In conjunction with the above, develop an education program for a variety of audiences and directed by the aims and objectives of the GWMP.	ESP	C, LC			
				PC11.3 Complete the financial business plan for the Edendale Farm Masterplan and include green wedge and community agricultural initiatives within Edendale Farm's interpretation and education programs.	ESP	C			
				PC11.4 Develop a pilot program to address the potential conflicts between farmers and non-agricultural residents of the rural areas. This should consider a country-code type approach combined with welcoming people into the area and done in conjunction with real estate agents.	EP	SP			
				PC11.5 Actively promote the brand and lifestyle of the Nillumbik Green Wedge.	C				√
				PC11.6 Publish a guide to the green wedge which contains information about the special character of the area and the facilities for its enjoyment and make sure all land holders and estate agents receive copies. See also PC1.1 interpretation strategy).	ESP	C			
				PC11.7 Investigate the viability of a visitor centre which provides information about what to see and do in the area. (See PC11.1 interpretation strategy).	ESP	ECODEV, C			

Council plan objectives	GWMP Aim	Objectives	Strategies	Actions			Priority			
GOVERNANCE 1.1.4 Periodically review emergency management plans for fire, flood, storm and other events. 2.1.5 Recognise our responsibility in managing and protecting the green wedge. 4.1.8 Demonstrate high standards of good governance within council and with our community. 4.1.10 Advocate on behalf of the community to goverments and agencies. 4.1.12 Consult with our community to help us be informed and make better decisions.	Aim 7 Deliver the GWMP and future actions in keeping with the guiding principles. Aim 5 Minimise bushfire risk to human life.	1.Implement the GWMP. 2. Work collaboratively and transparently with the community and stakeholders to find the best ways in which to deliver the GWMP.	GO1 Manage Nillumbik's Green Wedge in accordance with the GWMP and its guiding principles.	GO1.1 Undertake 4-yearly reviews of the GWMP and report on its implementation annually. The first review to take place after publication of the Royal Commission report into the February 2009 bushfires.	SP					
				GO1.2 Establish an expert committee to advise on green wedge funding and undertake investigations into a new possible governance arrangement.	G	ESP				
				GO1.3 Communicate the contents of the GWMP.	C					
				GO1.4 Finalise performance indicators for the green wedge management plan including investigating use of the Victorian <i>State of the Environment</i> report indicators as a measure of progress in implementing the green wedge management plan.	SP	EP				
				GO1.5 Advocate to state government for interface councils to be eligible for rural and regional funding programs.	CEO					√
				GO1.6 Advocate to state government for research into the community's awareness of green wedges and the willingness of the wider community to support them financially.	CEO					
				GO1.7 Advocate that state government promotes the existence and value of Melbourne's green wedges to the wider community as a metropolitan asset.	CEO					
				GO1.8 Lobby state government for an increase in funding for the rural sectors of the shire.	CEO					
				GO.1.9 Encourage the use of sustainable and bushfire resistant design, materials and energy sources.	StatP	BS				√
				GO1.10 Review vegetation controls, fuel modification practices and fire protection in the context of climate change, state government policy changes and the outcomes of the Royal Commission into the February 2009 bushfires and the latest scientific research.	SP	DPCD, EW, IM, CFA, adjoining municipalities				
				GO1.11 Regularly review the Municipal Fire Prevention Committee plan and facilitate increased opportunities for community education and bushfire preparedness in the green wedge.	IM	DPCD, EW, IM, CFA, adjoining municipalities				√
				GO1.12 Provide increased support for vegetation management on council controlled, as well as private, land in the green wedge.	IM	EW				
				GO1.13 In partnership with the CFA provide support for community fireguard groups and other community education initiatives.	IM	CFA				
				GO1.14 Consider an advisory group to assist in implementing the GWMP.	SP					

Abbreviations and terms

The following abbreviations and terms are used in this plan.

Activity centre	<p>'Activity centres are vibrant hubs where people shop, work, meet, relax and often live. Usually well served by public transport, they range in size and intensity of use from local neighbourhood strip shopping centres to universities and major regional shopping malls. Linking them to good transport networks (road, public transport, pedestrian and cycle) is crucial as they attract high numbers of people and generate a significant volume of trips in metropolitan Melbourne.</p> <p>They are a central part of <i>Melbourne 2030</i>, which will encourage more development into activity centres to foster more sustainable, more vibrant communities and will be the focus of major change over the next 30 years.' <http://www.dse.vic.gov.au></p>
Agricultural, or farm viability (includes technical viability)	<p>The Shire of Nillumbik's <i>Land Capability Study</i> (Woodward-Clyde, 1998) differentiates between <i>technical viability</i> and <i>farm viability</i>. <i>Technical viability</i> refers to whether a farm has potential for agricultural production in a sustainable way and is not a measure of its economic performance. <i>Farm viability</i> refers to whether production is economically viable: does it make sufficient income to service borrowings, provide a family with an adequate standard of living, allow investment in the farm and demonstrate ecological sustainability? (Nillumbik Shire Council 2006, p. 25)</p>
Biodiversity	<p>Biodiversity refers to the full range of variety and variability within and among living organisms and the ecological complexes in which they occur. It encompasses ecosystem or community diversity, species diversity and genetic diversity.</p>
Carbon footprint	<p>A carbon footprint is a measure of the impact of human activities on the environment in terms of the amount of greenhouse gases produced, measured in units of carbon dioxide.</p>
Climate change	<p>Climate change refers to the change in climate predicted to arise from human activities. This is predominantly attributed to an enhanced greenhouse effect which is the process whereby an increase in greenhouse gases including carbon dioxide (CO₂), water vapour and methane, which are in the air closest to the earth's surface, absorb outgoing radiant heat and radiate some of this heat back downwards to warm the surface of the earth.</p> <p>.</p>
Conservation	<p>'Conservation means all the processes and actions of looking after a place so as to retain its natural significance and always includes protection, maintenance and monitoring'.</p> <p>'In making decisions that will affect the future of a place, it is important to consider all of its heritage values – both natural and cultural ... The Charter relates closely to the general structure and logic of <i>The Burra Charter – the Australia ICOMOS Charter for Places of Cultural Significance 1999</i>' (Australian Natural Heritage Charter).</p>
CSIRO	Commonwealth Scientific and Research Organisation
Cultural significance	'Australian conservation practice... is based on the concept of

	<p>cultural significance i.e. that the values of a place can be described and that retaining significance is the primary objective of conservation. Some acts use slightly different terms – such as “heritage significance” or “cultural heritage value” – but the concept is the same as cultural significance.’</p> <p>Cultural significance is embodied in a place, its fabric, setting, use, associations and meanings. A given place may have a range of values for different individuals or groups. In heritage practice the significance of a place is assessed in terms of five values: aesthetic, historic, scientific, social and spiritual value (Walker and Marquis-Kyle 2004)</p>
Ecological footprint	Ecological footprint analysis compares human demand on nature with the biosphere's ability to regenerate resources and provide services. It does this by assessing the biologically productive land and marine area required to produce the resources a population consumes and to absorb the corresponding waste, using prevailing technology.
Ecotourism	‘Ecologically sustainable tourism with a primary focus on experiencing natural areas that fosters environmental and cultural understanding, appreciation and conservation’, Ecotourism Australia
Enhance (as in conserve and enhance)	‘Enhancement means the introduction of additional organisms, genotypes, species or elements of habitat or geodiversity to those that naturally exist in a place.’ (Article 1.26 Australian Natural Heritage Charter)
Green wedge	‘Green wedges are the open landscapes that were set aside, more than 30 years ago, to conserve rural activities and significant natural features and resources between the growth areas of metropolitan Melbourne as they spread out along major roads and rail links.’ (DPCD 2008)
Green wedge management plan (GWMP)	The GWMP sets out objectives, strategies and actions to manage the Nillumbik Green Wedge
Heritage values	See cultural significance
Intellectual access	This term implies that access to the Nillumbik Green Wedge will not only be physical access but will include interpretation materials suited to a range of different audiences and learning styles. It is in line with interpretation best practice.
Interface councils	The interface councils are located on the fringes of Melbourne. They are Cardinia, Hume, Melton, Mornington Peninsula, Nillumbik, Whittlesea, Wyndham and Yarra Ranges. These councils define themselves as 30 per cent urban and 70 per cent rural, forming the interface between regional and metropolitan Victoria.
Landscape values	The value of a landscape is a combination of vegetative cover and wildlife and visual qualities, including landform features and views and the value placed on it by a community or communities. Landscape values contribute greatly to amenity and are an attraction for residents and visitors.
LGA	Local Government Association
Melbourne 2030 (M2030)	The Victorian Government’s planning strategy for Melbourne.
Municipal Strategic Statement (MSS)	A statutory document that guides future land use and development in the Shire of Nillumbik.
Peak oil	Peak oil is the point in time when the maximum rate of global

	petroleum extraction is reached, after which the rate of production enters terminal decline.
SEIFA	Social Economic Index for Areas is an analytical tool used to assess socio-economic wellbeing and identify areas of advantage and disadvantage.
SLA	Statistical Local Area
Sustainability	Refers in its simplest form to the utilisation of resources at a level that can be maintained into the distant future and in a manner that does not irreversibly damage natural ecosystems and human societies.
Sustainable tourism	'Sustainable tourism development meets the needs of present tourists and host regions while protecting and enhancing opportunities for the future. It is envisaged as leading to management of all resources in such a way that economic, social and aesthetic needs can be fulfilled while maintaining cultural integrity, essential ecological processes, biological diversity and life support systems' (Department of Environment and Heritage 2004).
Technical viability	See Agricultural or farm viability.
UGB (urban growth boundary)	The urban growth boundary is a tool that the government introduced in 2002 to help contain Melbourne's outward growth.

Bibliography

Australian Bureau of Statistics, *Population projections*

<<http://www.abs.gov.au/Ausstats/abs@.nsf/mf/3222.0>>, viewed 30 October 2008

Australian Bureau of Statistics 2007, 2006 Census, ABS,

<http://www.id.com.au/profile/default.aspx?id=140>, viewed 16 March 2009

Australian Natural Heritage Charter

<<http://www.environment.gov.au/heritage/ahc/publications/commission/books/australian-national-heritage-charter.html>>

'Australians ranked among the world's worst eco-offenders', *The Age*, 30 October 2008, p. 5

Beardsell, C 1997, *Sites of faunal and habitat significance in north-east Melbourne*, Nillumbik Shire Council, Greensborough

Butler, G & Associates 1996, *Nillumbik Shire Heritage Study: Environmental History Stage 1*, Vol. 2

Clark, N & Associates 1998, *Nillumbik Shire commodity and economic profiles*, Nillumbik Shire Council, Greensborough

Commissioner for Environmental Sustainability 2008, *Victoria – State of the Environment*, Victorian Government, Melbourne

Context Pty Ltd August 2008, *Knox City Council: 2008–2018 Sustainable Environment Strategy*, Knox City Council,

<www.knox.vic.gov.au/Page/Download.asp?name=Knox_Sustainable_Environment_Strategy.pdf&size=1419406&link=../Files/Knox_Sustainable_Environment_Strategy.pdf>

Countryside Agency and Scottish Natural Heritage 2002, *Landscape Character Assessment: Guidance for England and Scotland*,

<http://www.countryside.gov.uk/images/LCA_guidance_tcm2-19316.pdf>, viewed 25 May 2007

Countryside Agency 2006, *Landscape: beyond the view*,

<www.landscapecharacter.org.uk>, viewed 25 May 2007

Department of Environment and Heritage 2004, *Steps to sustainable tourism*, Department of Environment and Heritage, Canberra

Department of the Environment, Sport and Territories 1996, *National Strategy for the Conservation of Australia's Biological Diversity*,

<<http://www.environment.gov.au/biodiversity/publications/strategy/chap2.html>>, viewed 7 May 2008, Department of Environment, Sport and Territories, Canberra

Department of Human Services (Victoria) 2001, *Environments for health – promoting health and wellbeing through built, social, economic and natural environments: municipal health planning framework*, DHS, Melbourne

Department of Planning and Community Development (Victoria) 2008a, *Planning for all of Melbourne, the Victorian Government response to the Melbourne 2030 audit*, DPCD, Melbourne

Department of Planning and Community Development (Victoria) 2008b, *Melbourne @ 5 Million – full report*,
<<http://www.dse.vic.gov.au/DSE/nrenpl.nsf/LinkView/1352EB2F109044AFCA2575120016BE8B718331E8AB7D9987CA256D1900299B45>>, DPCD, Melbourne, viewed 11 March 2009

Department of Planning and Community Development (Victoria) 2008c, *Melbourne @ 5 Million – Fact Sheet*,
<<http://www.dse.vic.gov.au/DSE/nrenpl.nsf/LinkView/1352EB2F109044AFCA2575120016BE8B718331E8AB7D9987CA256D1900299B45>>, DPCD, Melbourne, viewed 15 December 2008

Department of Primary Industries (Victoria) 2008a, *Future Farming: Productive, Competitive, Sustainable*, DPI, Melbourne

Department of Primary Industries (Victoria) 2008b, *Square Pegs in Green Wedges*, DPI, Melbourne

Department of Sustainability and Environment (Victoria) 1997, *Victoria's Biodiversity Strategy – Sustaining our Living Wealth*, DSE,
<<http://www.dse.vic.gov.au/dse/nrence.nsf/LinkView/EFAC7933C595DA23CA256EE7000B6CCC1C26CB3A9ABC1C2FCA256EE700148D0B>>, viewed 8 May 2008

Department of Sustainability and Environment (Victoria) 2003, *Planning Provisions for Melbourne's Green Wedges*, DSE, Melbourne

Department of Sustainability and Environment (Victoria) 2005, *Principles, issues and guidelines for the preparation of green wedge management plans*, DSE, Melbourne

Department of Sustainability and Environment (Victoria) 2006, *Our Environment, Our Future – Sustainability Action Statement 2006*, Fact Sheet, DSE,
<<http://www.dse.vic.gov.au/ourevironment-ourfuture/downloads.htm>>, viewed 23 December 2008

Department of Sustainability and Environment (Victoria) 2008, *Land and biodiversity at a time of climate change*, Green Paper, DSE, Melbourne

Department of Transport (Victoria) 2006, *Meeting our Transport Challenges*, DoT,
<<http://www.transport.vic.gov.au/DOI/Internet/planningprojects.nsf/AllDocs/80E779DD0C35BA08CA2573AE000509F0?OpenDocument>>, viewed 28 May 2008

Department of Transport (Victoria) 2007, *North East Integrated Transport Study (NEITS)*, DoT,
<<http://www.transport.vic.gov.au/Doi/Internet/planningprojects.nsf/AllDocs/8D2A24F5A2FB7552CA256F3200257724?OpenDocument#neits>>, viewed 28 May 2008

Diamond Creek sub catchment Working Group 1999, *Diamond Creek sub catchment – Local Action program*

Dovers, S 2008, 'Policy and Institutional Reforms' in *Ten Commitments Reshaping the Lucky Country's Environment*, eds D Lindenmayer, S Dovers, M Harriss Olsen, S Morton, CSIRO Publishing, Collingwood, Victoria

Ellender, I 1994, *The Aboriginal Heritage of the Shire of Eltham*, unpublished study

Essential Economics 2008, *Nillumbik Green Wedge Management Plan Economic Research*, Nillumbik Shire Council, Greensborough

Flora and Fauna Guarantee Act 1988, s. 4,
<http://www.austlii.edu.au/au/legis/vic/consol_act/fafga1988205/s4.html>, viewed 7 May 2008

Foran, B, Gurran, N 2008 'Population reforms' in *Ten Commitments Reshaping the Lucky Country's Environment*, eds D Lindenmayer, S Dovers, M Harriss Olsen, S Morton, CSIRO Publishing, Collingwood, Victoria

Goldie, J 2005 'Population, the great multiplier' in *In Search of Sustainability*, eds J Goldie, B Douglas, B Furnass, CSIRO Publishing, Collingwood, Victoria

Harris, G 2005, *Melbourne's Green Belt and Wedges*, School of Social Science and Planning, RMIT University, Melbourne

Hatfield-Dodds, S, Proctor, W 2008, *Delivering on the Promise of Stewardship: issues in realising the full potential of environmental stewardship payments for landholders and the land*, a discussion paper prepared for the Australian Conservation Foundation, CSIRO Sustainable Ecosystems, Canberra

Hughes, L 2008, 'Climate change' in *Ten Commitments Reshaping the Lucky Country's Environment*, eds D Lindenmayer, S Dovers, M Harriss Olsen, S Morton, CSIRO Publishing, Collingwood, Victoria

Jeavons and Jeavons 2000, Preliminary progress report Open Space Strategy, pp. 49–54, cited in Nillumbik Shire Council 2005, *Open Space Strategy*, Appendix 2, pp. 2–4, Nillumbik Shire Council, Greensborough

Johns, D, *The Kinglake Fires — January 2006*

Knox, A 1985, *Living in the Environment*, Second back Row Press, NSW

Knox, A *We are what we stand on*, Adobe Press, Eltham

Land and Water Australia 2003, *Biodiversity Conservation in Regional NRM Planning* research project VRA1 Fact sheet: September 2003,
<http://downloads.lwa2.com/downloads/publications_pdf/PF030618.pdf> viewed 7 May 2008

Lowe, Ian, 2005 'Achieving a sustainable future' in *In Search of Sustainability*, eds J Goldie, B Douglas, B Furnass, CSIRO Publishing, Collingwood, Victoria

Lowe, Ian, 2008 'Energy' in *Ten Commitments Reshaping the Lucky Country's Environment*, eds D Lindenmayer, S Dovers, M Harriss Olsen, S Morton, CSIRO Publishing, Collingwood, Victoria

Maribyrnong City Council, *Peak Oil Policy*,
 <<http://www.maribyrnong.vic.gov.au/Files/PeakOilPolicy.pdf>>, viewed 7 May 2008

Melbourne and Metropolitan Board of Works 1981, *Metropolitan Strategy Implementation*

Melbourne Water Corporation 2007, *Port Phillip and Westernport Regional River Health Strategy*, Melbourne Water, Melbourne

Mitchell, N 2004, 'Landscape-scale conservation: grappling with the green matrix', cited in Levitt, J N, *Land Lines* vol.16, no.1, Lincoln Institute of Land Policy
 <<http://www.lincolninst.edu/pubs/PubDetail.aspx?pubid=869>> viewed 28 May 2008

Nillumbik Shire Council 2000, *Draft Hurstbridge township strategy*, Nillumbik Shire Council, Greensborough

Nillumbik Shire Council 2001a, *Integrated Transport Strategy*, Nillumbik Shire Council, Greensborough

Nillumbik Shire Council 2001b, *Sustainable Water Management Plan*, Nillumbik Shire Council, Greensborough

Nillumbik Shire Council December 2006, *Green Wedge: Background paper*, Nillumbik Shire Council, Greensborough

Nillumbik Shire Council 2005, *Open Space Strategy*, Nillumbik Shire Council, Greensborough

Nillumbik Shire Council February 2007, *Green Wedge: Discussion paper*, Nillumbik Shire Council, Greensborough

Nillumbik Shire Council 2009, *Council Plan 2009–2013*, Nillumbik Shire Council, Greensborough

Nillumbik Shire Council, 2008, *Draft Climate Change Action plan: 2008-2015*, Nillumbik Shire Council, Greensborough

Nillumbik Shire Council *Municipal Strategic Statement*, Nillumbik Shire Council, Greensborough

Nillumbik Tourism Association 2008, *Business Plan*, Nillumbik Tourism Association,
 <http://www.nillumbiktourism.com/?PK_PAGE_ID=803> viewed 7 May 2008

Outer Suburban/interface Services and Development Committee 2010, *Final report on the Inquiry into Sustainable Agriculture in Outer Melbourne*

Parks Victoria 2002, *Linking people and spaces*, Victorian Government, Melbourne

Port Phillip and Westernport CMA 2000, *Port Phillip and Westernport Native Vegetation Plan*, Port Phillip and Westernport CMA, Frankston

Port Phillip and Westernport CMA, 2002/3, *Sustainability Objectives for natural resource management in the Port Phillip and Westernport region*, Port Phillip and Westernport CMA, Frankston

Possingham, H 2008, 'Biodiversity Reforms' in *Ten Commitments Reshaping the Lucky Country's Environment*, eds D Lindenmayer, S Dovers, M Harriss Olsen, S Morton, CSIRO Publishing, Collingwood, Victoria

Sciusco, L 1996, *Nillumbik Shire Council Aboriginal Heritage Study*, unpublished study

Scott, J M 2002, 'Measuring whole farm sustainability and profitability at a credible scale', *Proceedings of the Fenner Conference on the Environment*, Chicago State University, <<http://www.csu.edu.au/special/fenner/>> viewed 31 December 2008

Sustainability Victoria 2008, *Green Light Report – Victorians and the Environment*, Sustainability Victoria, <<http://www.sustainability.vic.gov.au/www/html/2698-green-light-report.asp?intSiteID=4>> viewed 23 December 2008

Tilbury, D, Wortman, D 2008, *Engaging people in sustainability*, IUCN Publications, Cambridge, UK

Tourism Victoria 2007, *Sustainability in Tourism*, <www.tourismexcellence.com.au/sustainability-in-tourism.html> viewed 7 May 2008

Walker, M & Marquis-Kyle, P 2004, *The illustrated Burra Charter: good practice for heritage places*, Australia ICOMOS inc., Burwood

Western Australian Government 2003, *State Sustainability Strategy* <<http://www.dec.wa.gov.au/our-environment/sustainability/state-sustainability-strategy.html>>, viewed 23 December 2008

Whittlesea City Council 2008, 'About Whittlesea', Whittlesea City Council website, <<http://www.whittlesea.vic.gov.au/content/content.asp?cnid=949>>, viewed 15 December 2008

Woodward-Clyde 1998, *Nillumbik Shire Council Land Capability Study*, Nillumbik Shire Council, Greensborough