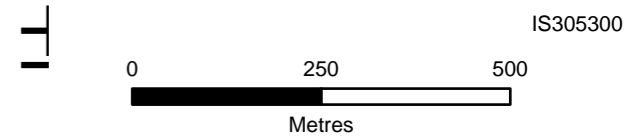


- Native Vegetation Time-Stamped Dataset (within MSA area)
- 104 Lignum Swamp
  - 125 Plains Grassy Wetland
  - 132 Plains Grassland
  - 653 Aquatic Herbland
  - 68 Creekline Grassy Woodland
- DELWP Modelled 2005 EVCs (outside MSA area)
- 68, Creekline Grassy Woodland
  - 104, Lignum Swamp
  - 125, Plains Grassy Wetland
  - 132, Plains Grassland

- Legend
- S2M Interconnector Indicative Assessment Area (Option B)
  - LGA Boundary
  - MSA boundary
  - Biodiversity Conservation Strategy (BCS) conservation area
  - BCS - Areas of Strategic Importance for Growling Grass Frog



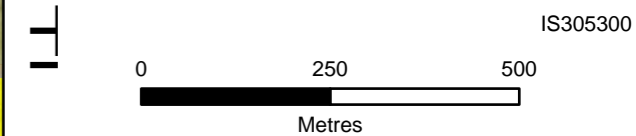
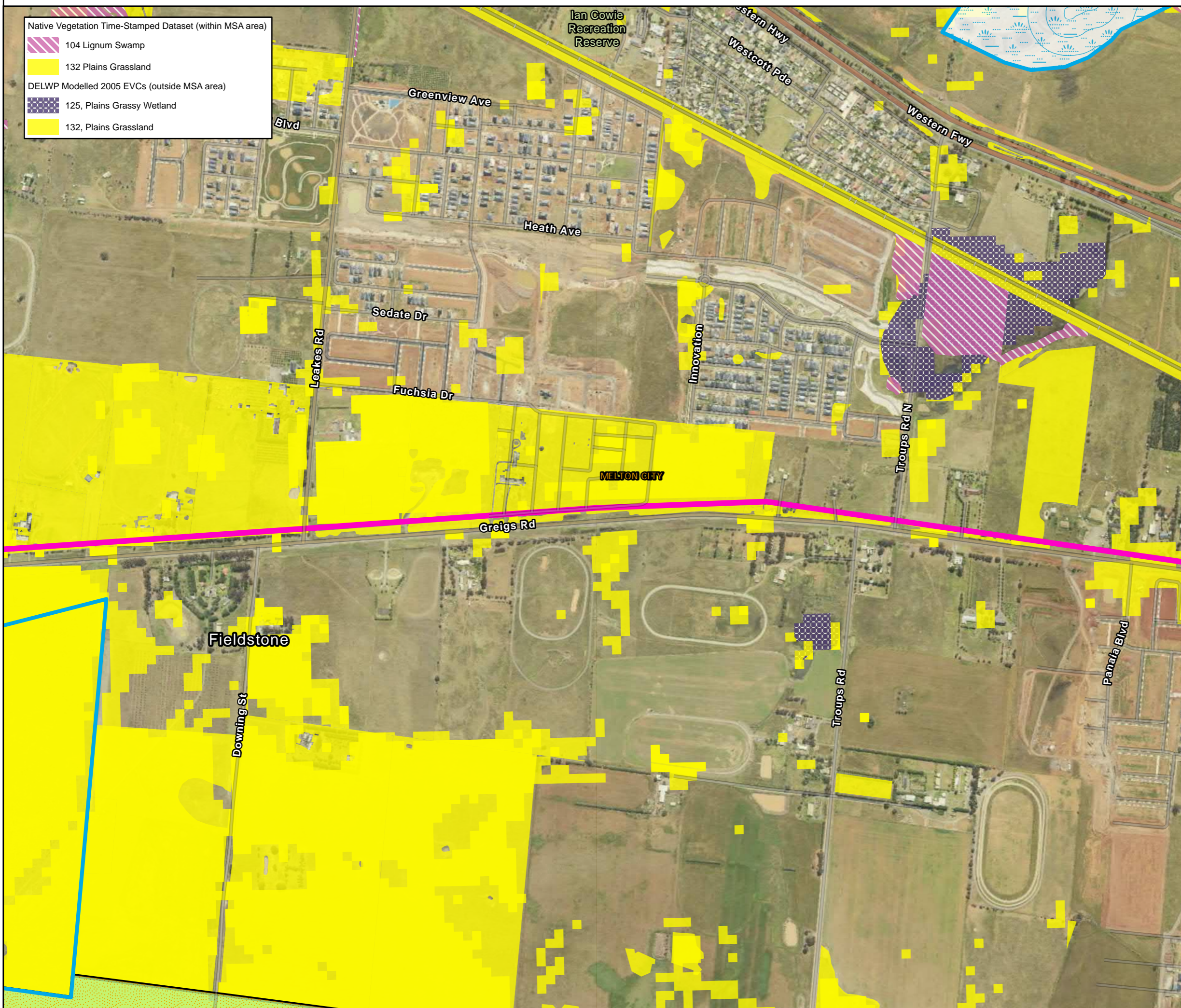
DATA SOURCES  
 © Commonwealth of Australia (Geoscience Australia) 2006 Geodata Topo 250k Series 3; Vicmap Data © State of Victoria 2021; CH2M Beca 2021. Aerometrex Metromap 2021; ESRI Basemap 2021

COPYRIGHT: The concepts and information contained in this document are the copyright of Jacobs. Use or copying of the document in whole or in part without the written permission of Jacobs constitutes an infringement of copyright. Jacobs does not warrant that this document is definitive nor free of error and does not accept liability for any loss caused or arising from reliance upon information provided herein.



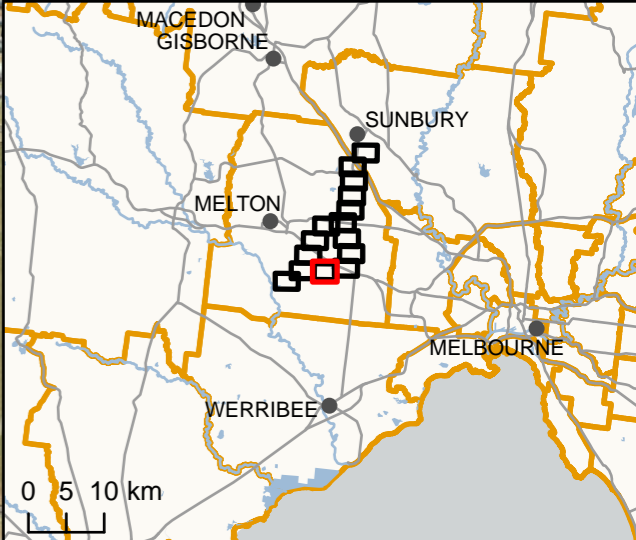
- Native Vegetation Time-Stamped Dataset (within MSA area)
- 104 Lignum Swamp
  - 132 Plains Grassland
- DELWP Modelled 2005 EVCs (outside MSA area)
- 125, Plains Grassy Wetland
  - 132, Plains Grassland







- Legend
- S2M Interconnector Indicative Assessment Area (Option B)
  - LGA Boundary
  - MSA boundary
  - Biodiversity Conservation Strategy (BCS) conservation area
  - Western Grassland Reserve (declared area)
  - BCS – Areas of Strategic Importance for Growling Grass Frog









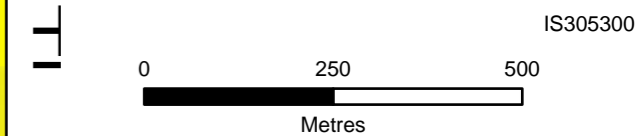
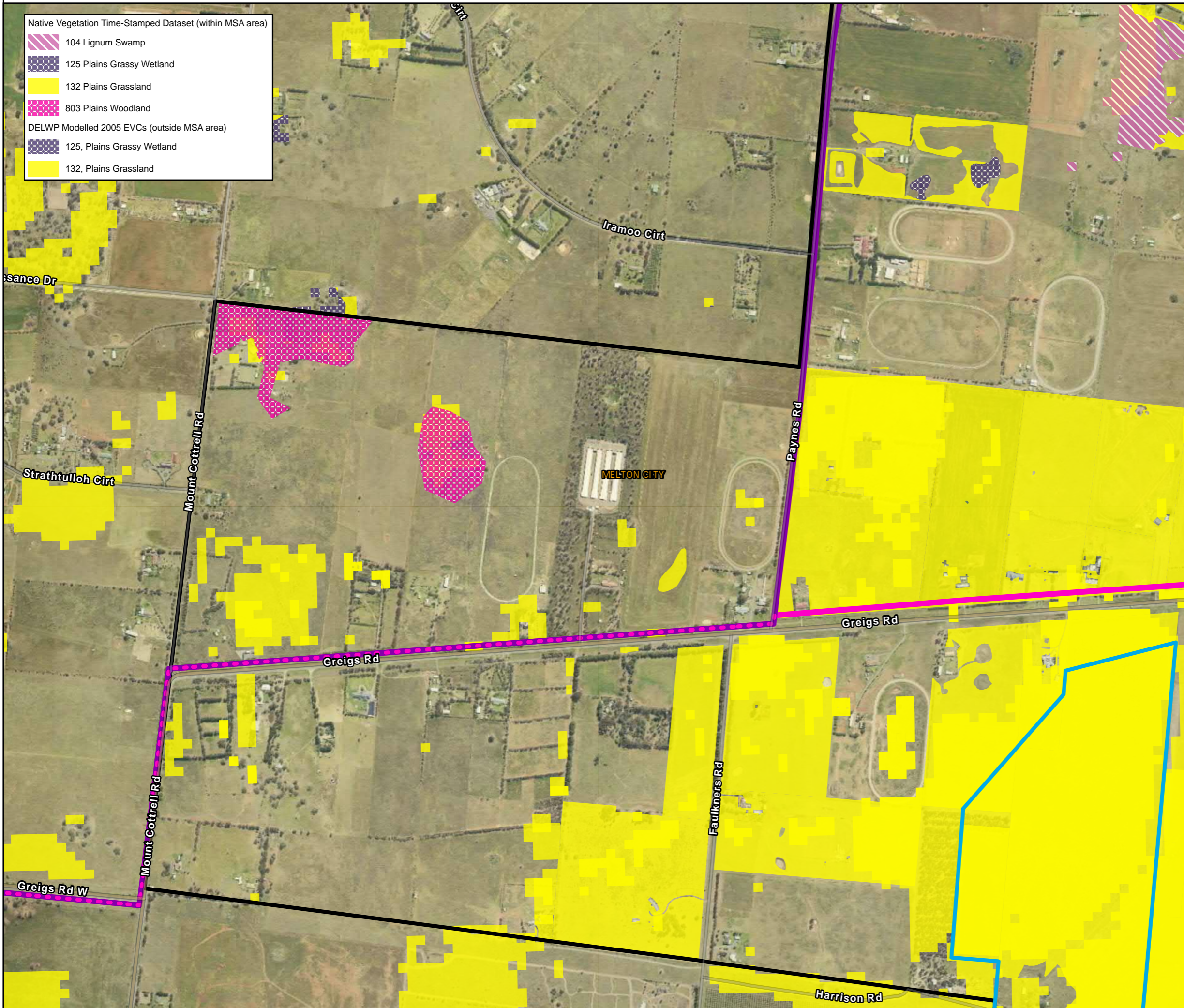
DATA SOURCES  
 © Commonwealth of Australia (Geoscience Australia) 2006 Geodata Topo 250k Series 3; Vicmap Data © State of Victoria 2021; CH2M Beca 2021. Aerometrex Metromap 2021; ESRI Basemap 2021

COPYRIGHT: The concepts and information contained in this document are the copyright of Jacobs. Use or copying of the document in whole or in part without the written permission of Jacobs constitutes an infringement of copyright. Jacobs does not warrant that this document is definitive nor free of error and does not accept liability for any loss caused or arising from reliance upon information provided herein.



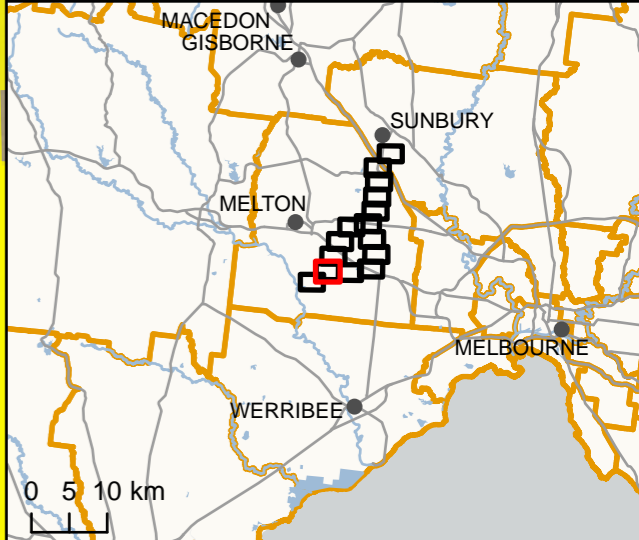
- Native Vegetation Time-Stamped Dataset (within MSA area)
-  104 Lignum Swamp
  -  125 Plains Grassy Wetland
  -  132 Plains Grassland
  -  803 Plains Woodland
- DELWP Modelled 2005 EVCs (outside MSA area)
-  125, Plains Grassy Wetland
  -  132, Plains Grassland

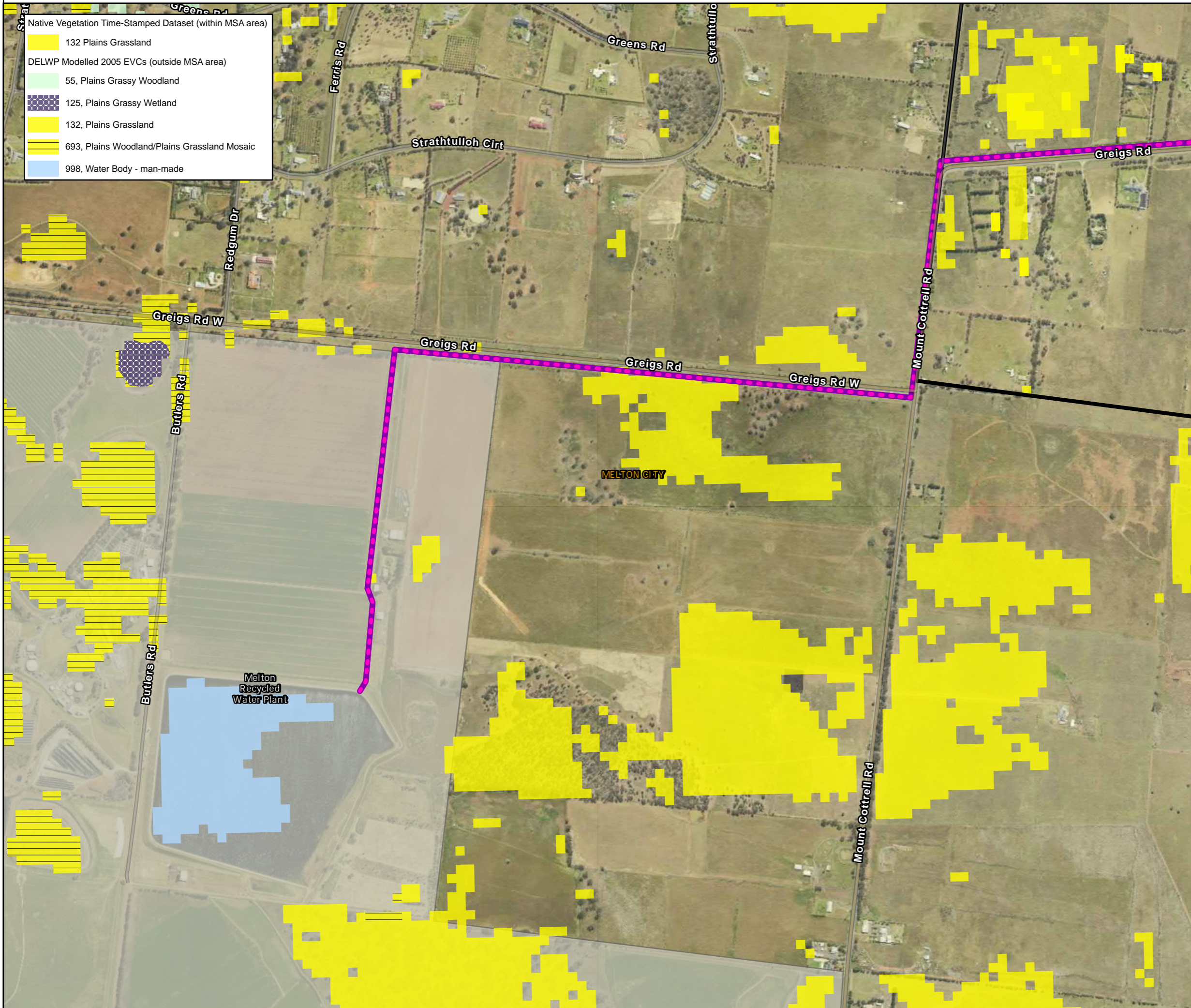
- Legend
-  S2M Interconnector - Shared alignment
  -  S2M Interconnector Indicative Assessment Area (Option A)
  -  S2M Interconnector Indicative Assessment Area (Option B)
  -  LGA Boundary
  -  MSA boundary
  -  Biodiversity Conservation Strategy (BCS) conservation area



DATA SOURCES  
 © Commonwealth of Australia (Geoscience Australia) 2006 Geodata Topo 250k Series 3; Vicmap Data © State of Victoria 2021; CH2M Beca 2021. Aerometrex Metromap 2021; ESRI Basemap 2021

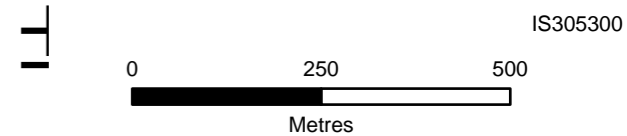
COPYRIGHT: The concepts and information contained in this document are the copyright of Jacobs. Use or copying of the document in whole or in part without the written permission of Jacobs constitutes an infringement of copyright. Jacobs does not warrant that this document is definitive nor free of error and does not accept liability for any loss caused or arising from reliance upon information provided herein.





- Native Vegetation Time-Stamped Dataset (within MSA area)
- 132 Plains Grassland
- DELWP Modelled 2005 EVCs (outside MSA area)
- 55, Plains Grassy Woodland
  - 125, Plains Grassy Wetland
  - 132, Plains Grassland
  - 693, Plains Woodland/Plains Grassland Mosaic
  - 998, Water Body - man-made

- Legend
- S2M Interconnector - Shared alignment
  - S2M Interconnector Indicative Assessment Area (Option A)
  - S2M Interconnector Indicative Assessment Area (Option B)
  - Western Water Recycled Water Plants
  - LGA Boundary
  - MSA boundary



DATA SOURCES  
 © Commonwealth of Australia (Geoscience Australia) 2006 Geodata Topo 250k Series 3; Vicmap Data © State of Victoria 2021; CH2M Beca 2021. Aerometrex Metromap 2021; ESRI Basemap 2021

COPYRIGHT: The concepts and information contained in this document are the copyright of Jacobs. Use or copying of the document in whole or in part without the written permission of Jacobs constitutes an infringement of copyright. Jacobs does not warrant that this document is definitive nor free of error and does not accept liability for any loss caused or arising from reliance upon information provided herein.

