



Legend

- S2M Interconnector - Shared alignment
- S2M Interconnector Indicative Assessment Area (Option A)
- S2M Interconnector Indicative Assessment Area (Option B)
- Western Water Recycled Water Plants
- DELWP Region
- LGA Boundary
- Crown Land Tenure (Public Land Management)
 - UNDEFINED
 - NATURE CONSERVATION RESERVE
 - PUBLIC LAND WATER FRONTAGE
 - RAILWAY

± 0 250 500 Metres

IS3053300

DATA SOURCES
© Commonwealth of Australia (Geoscience Australia) 2006 Geodata Topo 250k Series 3; Vicmap Data © State of Victoria 2021; CH2M Beca 2021. Aerometrex Metromap 2021; ESRI Basemap 2021

COPYRIGHT: The concepts and information contained in this document are the copyright of Jacobs. Use or copying of the document in whole or in part without the written permission of Jacobs constitutes an infringement of copyright. Jacobs does not warrant that this document is definitive nor free of error and does not accept liability for any loss caused or arising from reliance upon information provided herein.





Legend

- S2M Interconnector - Shared alignment
- S2M Interconnector Indicative Assessment Area (Option A)
- S2M Interconnector Indicative Assessment Area (Option B)
- DELWP Region
- LGA Boundary

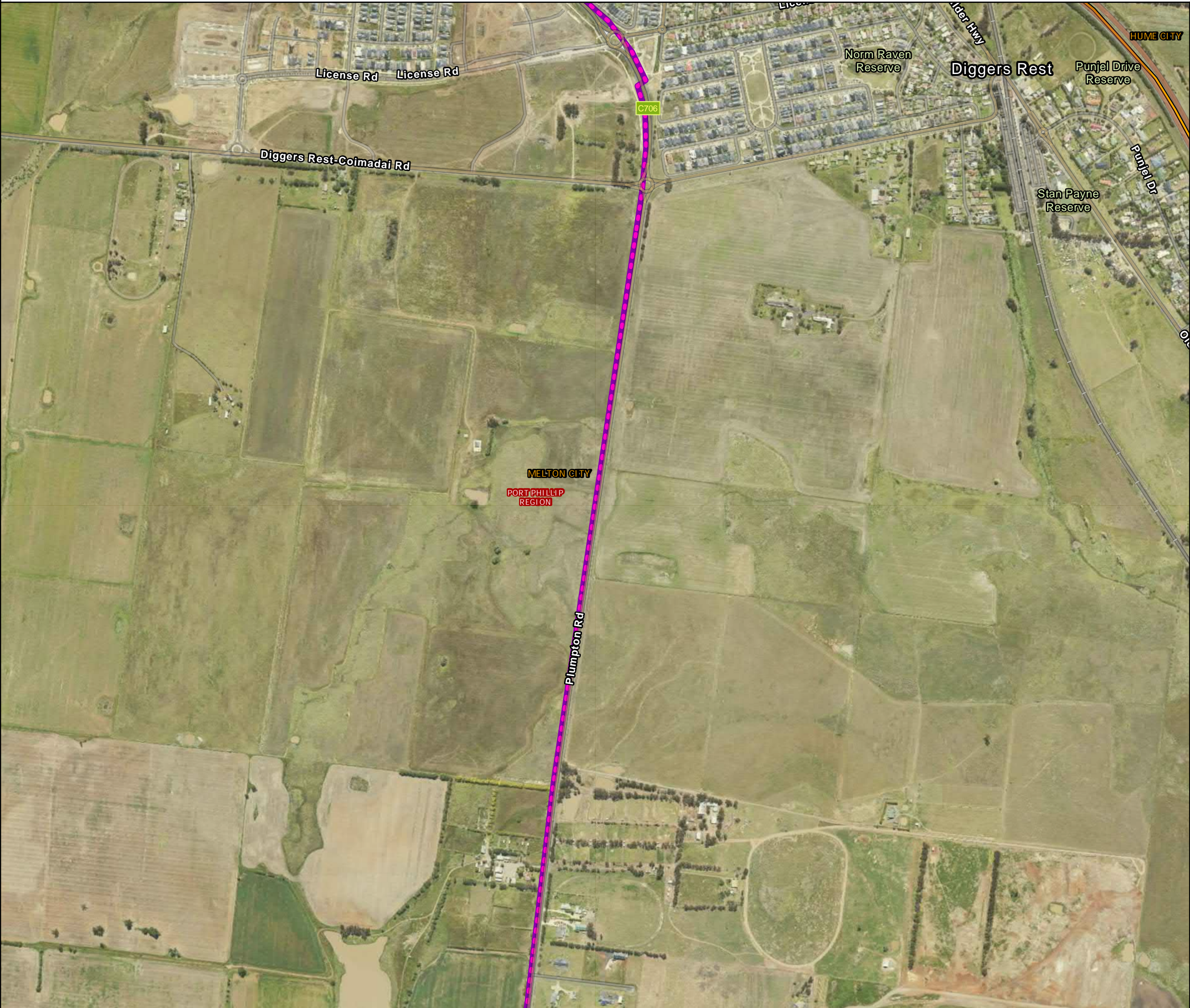
Scale bar: 0 250 500 Metres

IS305300

DATA SOURCES
© Commonwealth of Australia (Geoscience Australia) 2006 Geodata Topo 250k Series 3; Vicmap Data © State of Victoria 2021; CH2M Beca 2021. Aerometrex Metromap 2021; ESRI Basemap 2021

COPYRIGHT: The concepts and information contained in this document are the copyright of Jacobs. Use or copying of the document in whole or in part without the written permission of Jacobs constitutes an infringement of copyright. Jacobs does not warrant that this document is definitive nor free of error and does not accept liability for any loss caused or arising from reliance upon information provided herein.





Legend

- S2M Interconnector - Shared alignment
- S2M Interconnector Indicative Assessment Area (Option A)
- S2M Interconnector Indicative Assessment Area (Option B)
- DELWP Region
- LGA Boundary

±

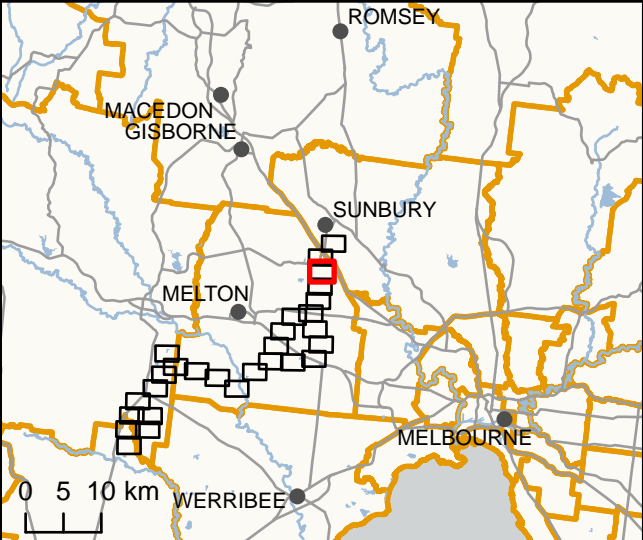
0 250 500

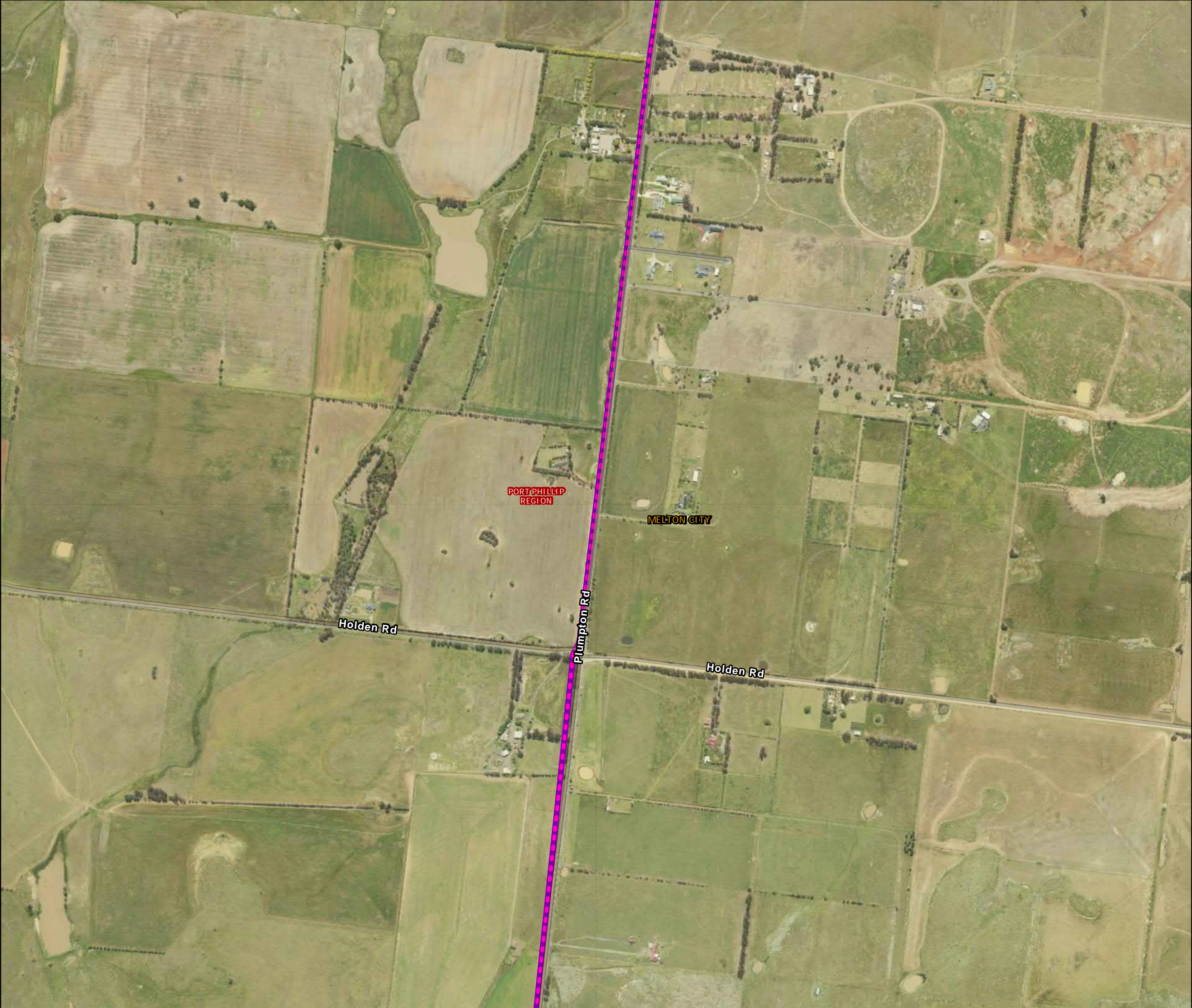
Metres

IS305300

DATA SOURCES
© Commonwealth of Australia (Geoscience Australia) 2006 Geodata Topo 250k Series 3; Vicmap Data © State of Victoria 2021; CH2M Beca 2021. Aerometrex Metromap 2021; ESRI Basemap 2021

COPYRIGHT: The concepts and information contained in this document are the copyright of Jacobs. Use or copying of the document in whole or in part without the written permission of Jacobs constitutes an infringement of copyright. Jacobs does not warrant that this document is definitive nor free of error and does not accept liability for any loss caused or arising from reliance upon information provided herein.





Legend

- S2M Interconnector - Shared alignment
- S2M Interconnector Indicative Assessment Area (Option A)
- S2M Interconnector Indicative Assessment Area (Option B)
- DELWP Region
- LGA Boundary

Scale bar and projection information:

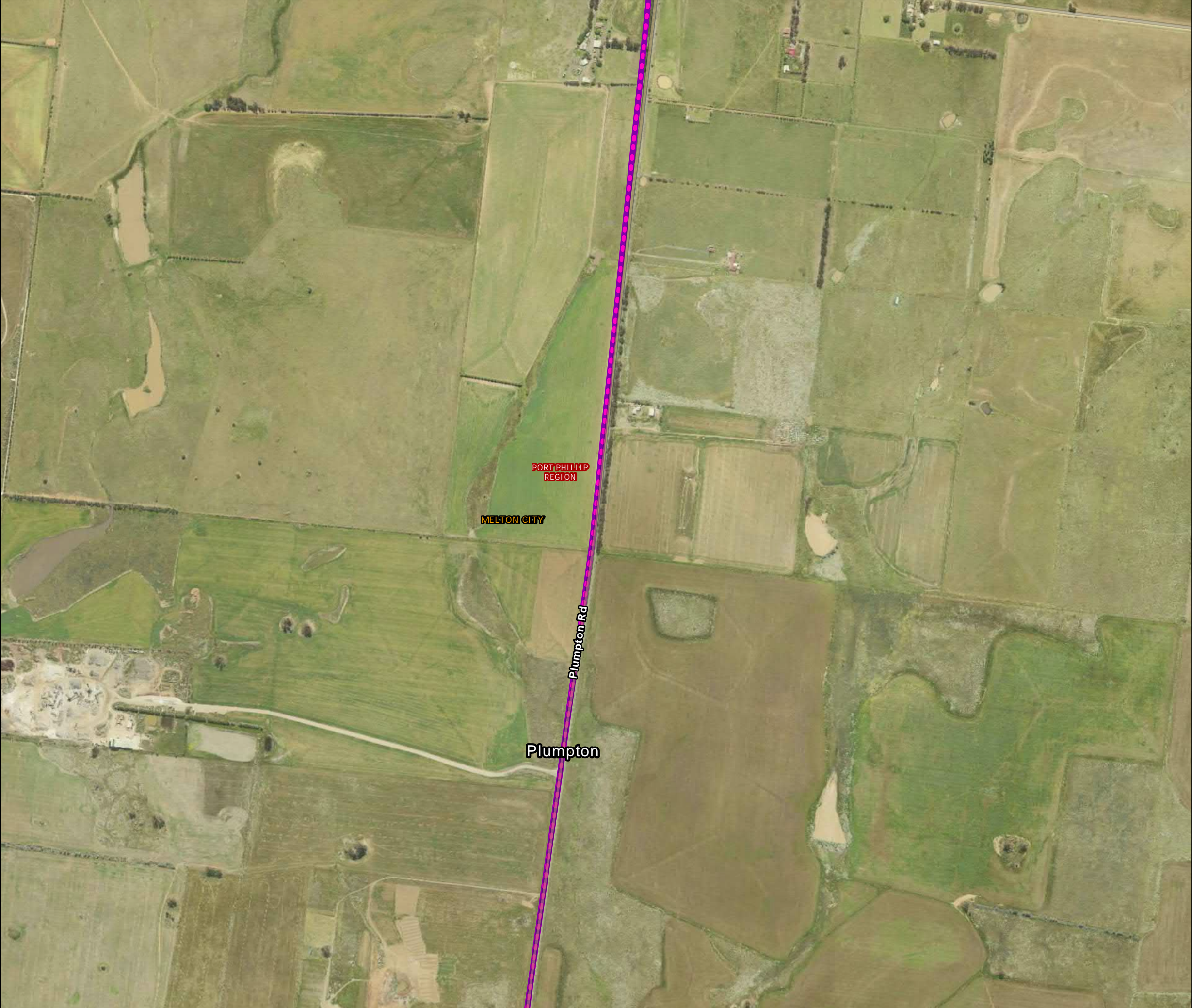
0 250 500 Metres

IS305300

DATA SOURCES
© Commonwealth of Australia (Geoscience Australia) 2006 Geodata Topo 250k Series 3; Vicmap Data © State of Victoria 2021; CH2M Beca 2021. Aerometrex Metromap 2021; ESRI Basemap 2021

COPYRIGHT: The concepts and information contained in this document are the copyright of Jacobs. Use or copying of the document in whole or in part without the written permission of Jacobs constitutes an infringement of copyright. Jacobs does not warrant that this document is definitive nor free of error and does not accept liability for any loss caused or arising from reliance upon information provided herein.





Legend

- S2M Interconnector - Shared alignment
- S2M Interconnector Indicative Assessment Area (Option A)
- S2M Interconnector Indicative Assessment Area (Option B)
- DELWP Region
- LGA Boundary

IS305300

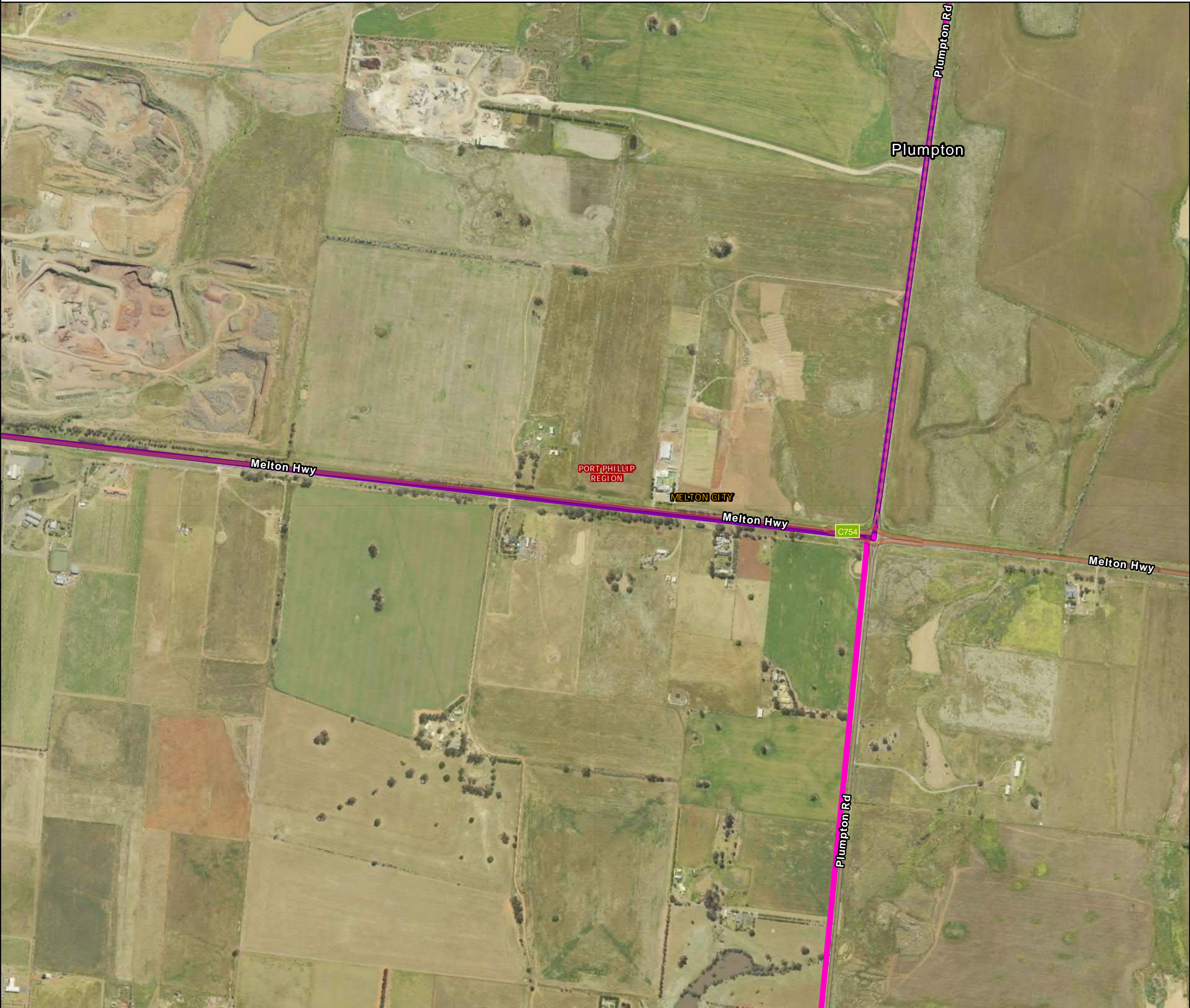
0 250 500

Metres

DATA SOURCES
© Commonwealth of Australia (Geoscience Australia) 2006 Geodata Topo 250k Series 3; Vicmap Data © State of Victoria 2021; CH2M Beca 2021. Aerometrex Metromap 2021; ESRI Basemap 2021

COPYRIGHT: The concepts and information contained in this document are the copyright of Jacobs. Use or copying of the document in whole or in part without the written permission of Jacobs constitutes an infringement of copyright. Jacobs does not warrant that this document is definitive nor free of error and does not accept liability for any loss caused or arising from reliance upon information provided herein.





Legend

- S2M Interconnector - Shared alignment
- S2M Interconnector Indicative Assessment Area (Option A)
- S2M Interconnector Indicative Assessment Area (Option B)
- DELWP Region
- LGA Boundary

±

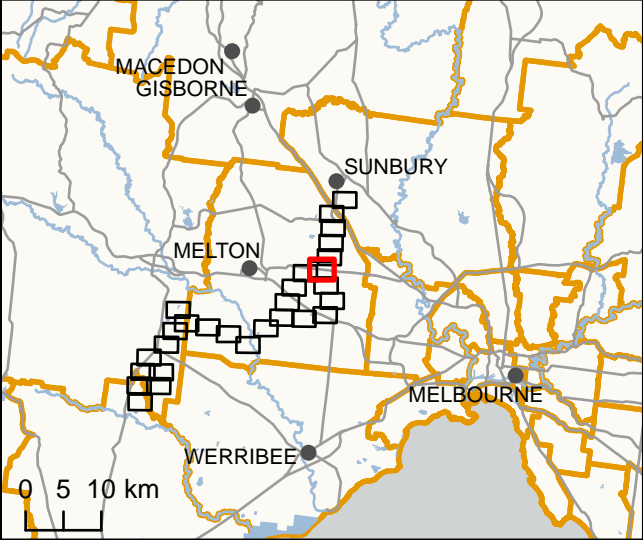
0 250 500

Metres

IS305300

DATA SOURCES
© Commonwealth of Australia (Geoscience Australia) 2006 Geodata Topo 250k Series 3; Vicmap Data © State of Victoria 2021; CH2M Beca 2021. Aerometrex Metromap 2021; ESRI Basemap 2021

COPYRIGHT: The concepts and information contained in this document are the copyright of Jacobs. Use or copying of the document in whole or in part without the written permission of Jacobs constitutes an infringement of copyright. Jacobs does not warrant that this document is definitive nor free of error and does not accept liability for any loss caused or arising from reliance upon information provided herein.





Legend

- S2M Interconnector Indicative Assessment Area (Option A)
- DELWP Region
- LGA Boundary
- Crown Land Tenure (*Public Land Management*)
 - OTHER RESERVES AND PUBLIC LAND
 - PUBLIC LAND WATER FRONTAGE

IS305300

0 250 500

Metres

DATA SOURCES
© Commonwealth of Australia (Geoscience Australia) 2006 Geodata Topo 250k Series 3; Vicmap Data © State of Victoria 2021; CH2M Beca 2021. Aerometrex Metromap 2021; ESRI Basemap 2021

COPYRIGHT: The concepts and information contained in this document are the copyright of Jacobs. Use or copying of the document in whole or in part without the written permission of Jacobs constitutes an infringement of copyright. Jacobs does not warrant that this document is definitive nor free of error and does not accept liability for any loss caused or arising from reliance upon information provided herein.





Legend

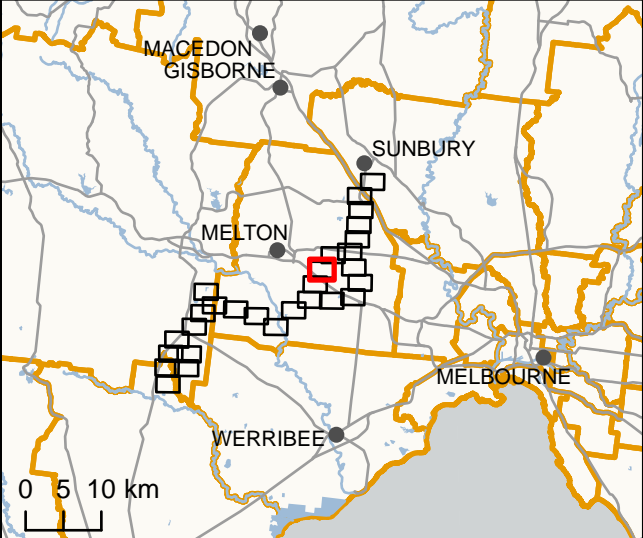
- S2M Interconnector Indicative Assessment Area (Option A)
- DELWP Region
- LGA Boundary
- Crown Land Tenure (Public Land Management)
- UNDEFINED
- OTHER RESERVES AND PUBLIC LAND
- PUBLIC LAND WATER FRONTAGE
- UNCATEGORISED PUBLIC LAND

0 250 500 Metres

IS305300

DATA SOURCES
© Commonwealth of Australia (Geoscience Australia) 2006 Geodata Topo 250k Series 3; Vicmap Data © State of Victoria 2021; CH2M Beca 2021. Aerometrex Metromap 2021; ESRI Basemap 2021

COPYRIGHT: The concepts and information contained in this document are the copyright of Jacobs. Use or copying of the document in whole or in part without the written permission of Jacobs constitutes an infringement of copyright. Jacobs does not warrant that this document is definitive nor free of error and does not accept liability for any loss caused or arising from reliance upon information provided herein.





Legend

- S2M Interconnector Indicative Assessment Area (Option A)
- DELWP Region
- LGA Boundary

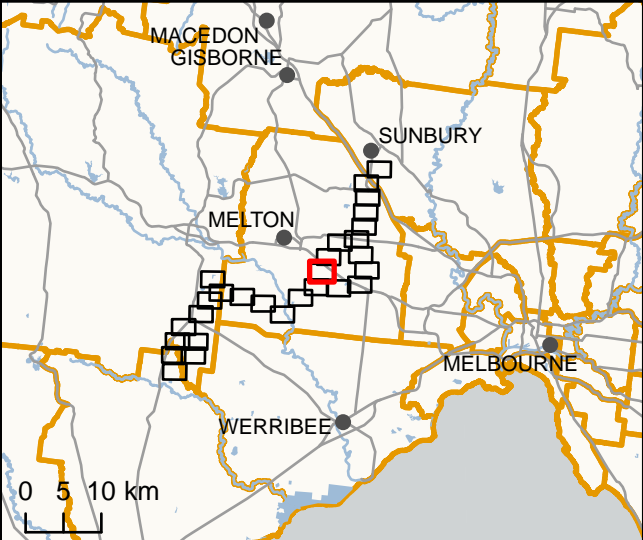
IS305300

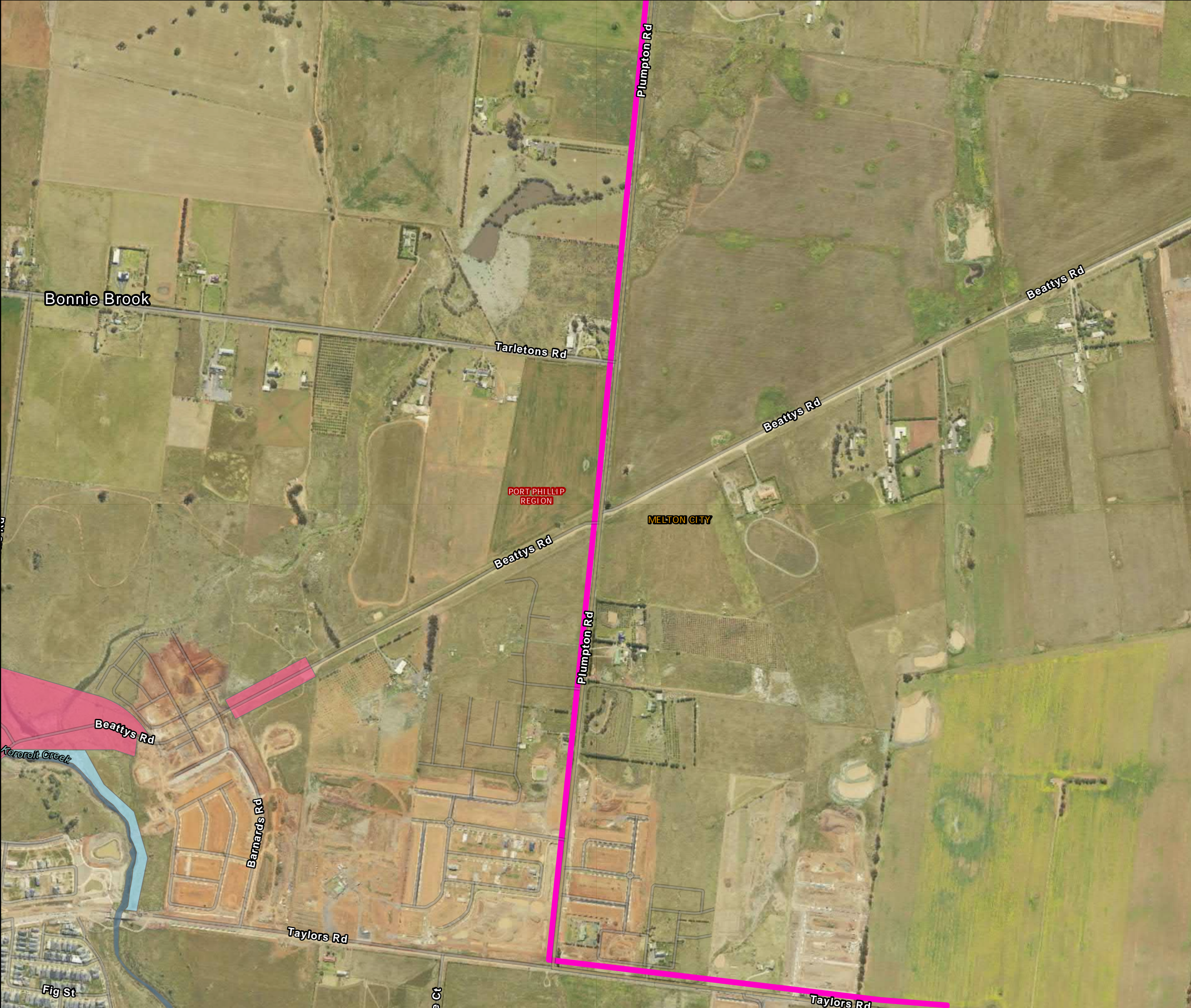
0 250 500

Metres

DATA SOURCES
© Commonwealth of Australia (Geoscience Australia) 2006 Geodata Topo 250k Series 3; Vicmap Data © State of Victoria 2021; CH2M Beca 2021. Aerometrex Metromap 2021; ESRI Basemap 2021

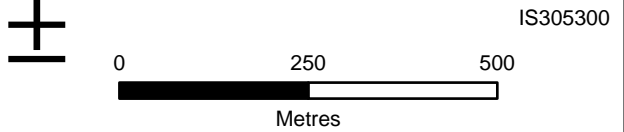
COPYRIGHT: The concepts and information contained in this document are the copyright of Jacobs. Use or copying of the document in whole or in part without the written permission of Jacobs constitutes an infringement of copyright. Jacobs does not warrant that this document is definitive nor free of error and does not accept liability for any loss caused or arising from reliance upon information provided herein.





Legend

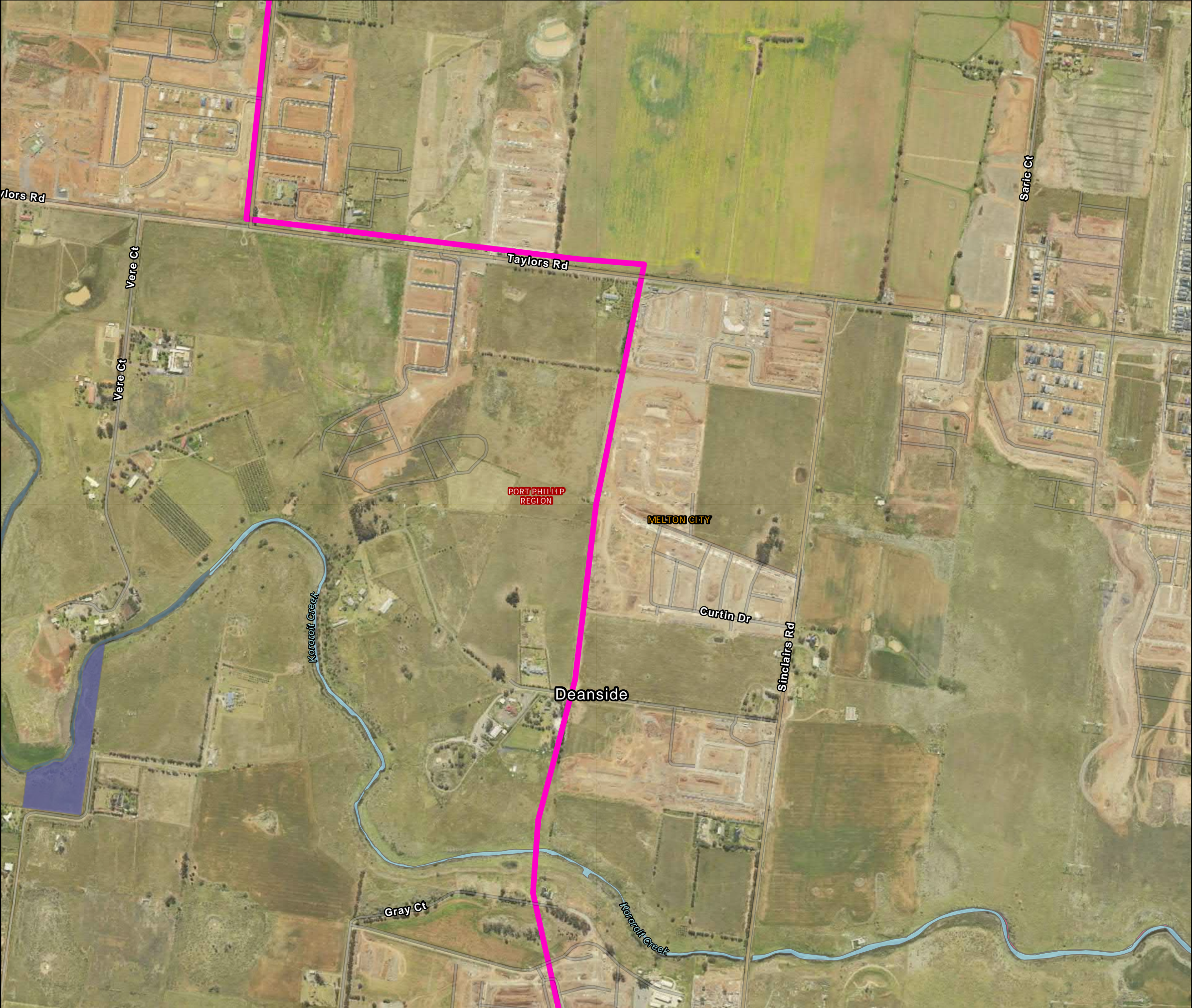
- S2M Interconnector Indicative Assessment Area (Option B)
- DELWP Region
- LGA Boundary
- Crown Land Tenure (Public Land Management)
- UNDEFINED
- PUBLIC LAND WATER FRONTAGE
- UNCATEGORISED PUBLIC LAND



DATA SOURCES
© Commonwealth of Australia (Geoscience Australia) 2006 Geodata Topo 250k Series 3; Vicmap Data © State of Victoria 2021; CH2M Beca 2021. Aerometrex Metromap 2021; ESRI Basemap 2021

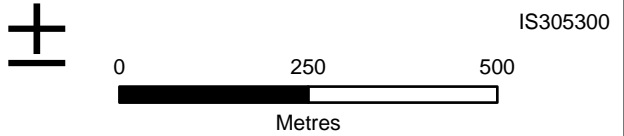
COPYRIGHT: The concepts and information contained in this document are the copyright of Jacobs. Use or copying of the document in whole or in part without the written permission of Jacobs constitutes an infringement of copyright. Jacobs does not warrant that this document is definitive nor free of error and does not accept liability for any loss caused or arising from reliance upon information provided herein.





Legend

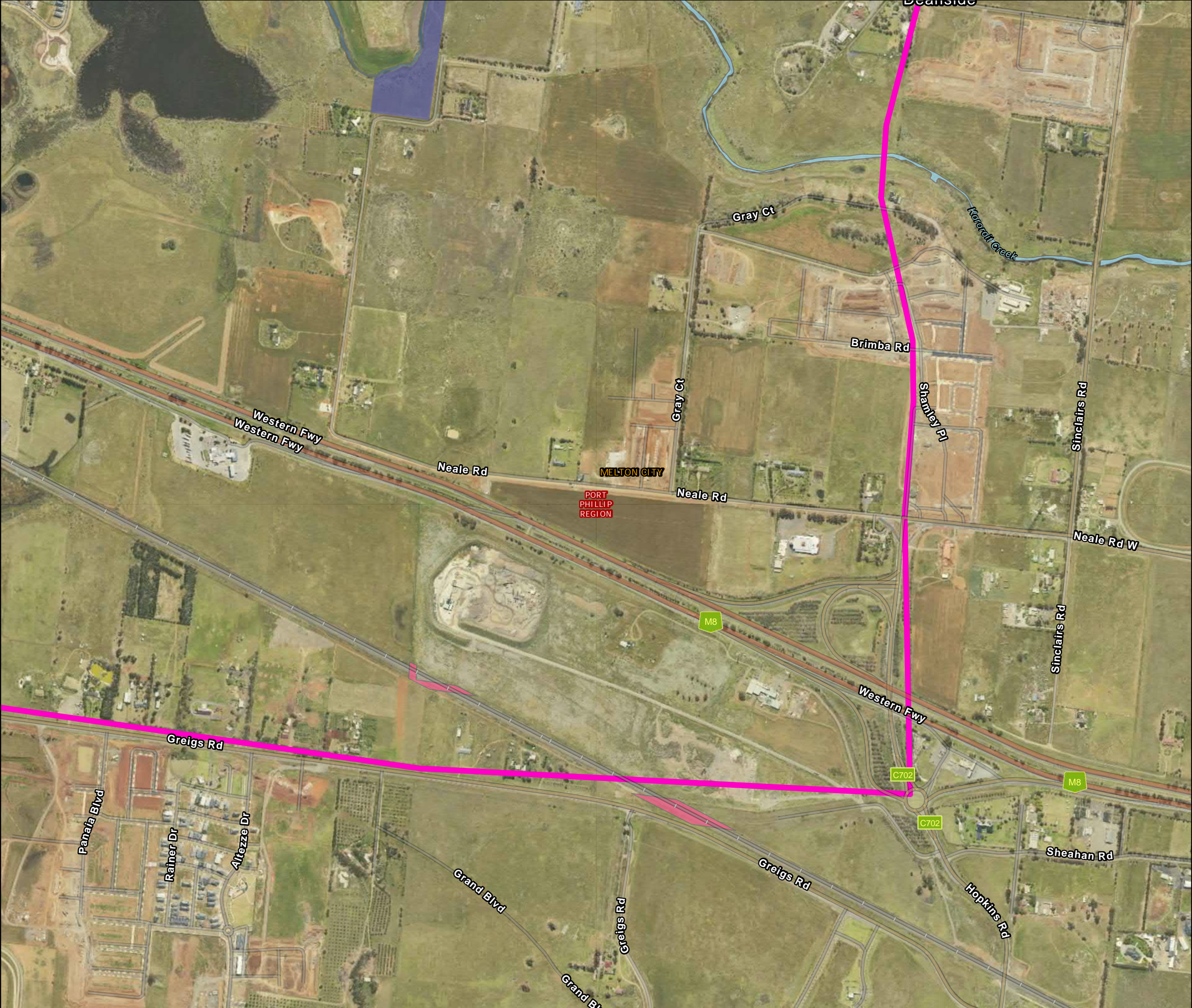
- S2M Interconnector Indicative Assessment Area (Option B)
- DELWP Region
- LGA Boundary
- Crown Land Tenure (*Public Land Management*)
- UNDEFINED
- OTHER RESERVES AND PUBLIC LAND
- PUBLIC LAND WATER FRONTAGE
- UNCATEGORISED PUBLIC LAND



DATA SOURCES
© Commonwealth of Australia (Geoscience Australia) 2006 Geodata Topo 250k Series 3; Vicmap Data © State of Victoria 2021; CH2M Beca 2021. Aerometrex Metromap 2021; ESRI Basemap 2021

COPYRIGHT: The concepts and information contained in this document are the copyright of Jacobs. Use or copying of the document in whole or in part without the written permission of Jacobs constitutes an infringement of copyright. Jacobs does not warrant that this document is definitive nor free of error and does not accept liability for any loss caused or arising from reliance upon information provided herein.





Legend

- S2M Interconnector Indicative Assessment Area (Option B)
- DELWP Region
- LGA Boundary
- Crown Land Tenure (Public Land Management)
- UNDEFINED
- OTHER RESERVES AND PUBLIC LAND
- PUBLIC LAND WATER FRONTAGE
- UNCATEGORISED PUBLIC LAND

IS305300

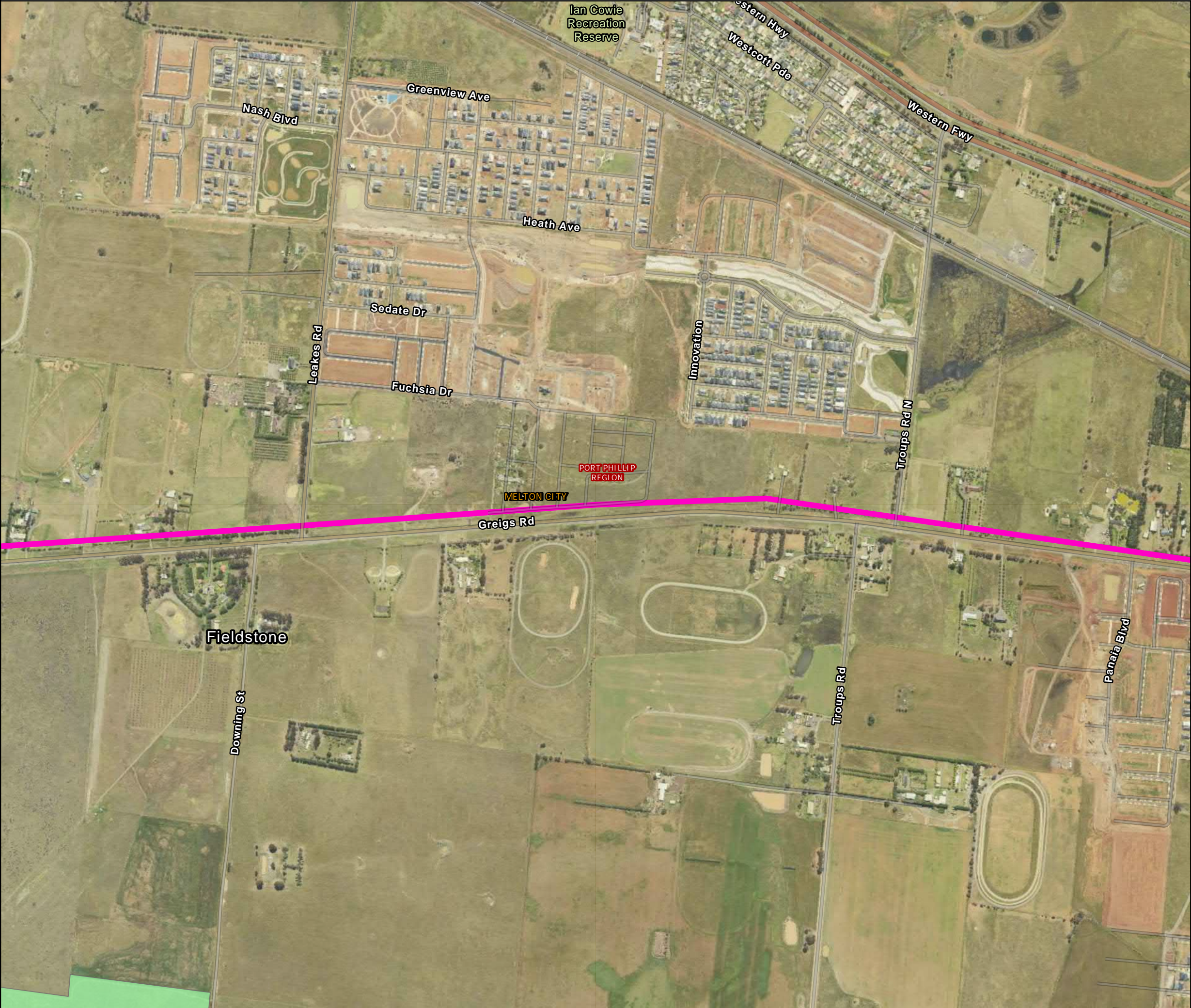
0 250 500

Metres

DATA SOURCES
© Commonwealth of Australia (Geoscience Australia) 2006 Geodata Topo 250k Series 3; Vicmap Data © State of Victoria 2021; CH2M Beca 2021. Aerometrex Metromap 2021; ESRI Basemap 2021

COPYRIGHT: The concepts and information contained in this document are the copyright of Jacobs. Use or copying of the document in whole or in part without the written permission of Jacobs constitutes an infringement of copyright. Jacobs does not warrant that this document is definitive nor free of error and does not accept liability for any loss caused or arising from reliance upon information provided herein.





Legend

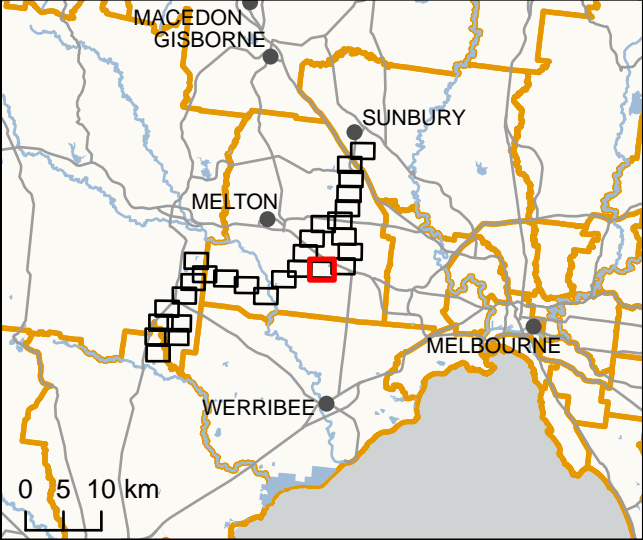
- S2M Interconnector Indicative Assessment Area (Option B)
- DELWP Region
- LGA Boundary
- Crown Land Tenure (Public Land Management)
- NATURE CONSERVATION RESERVE

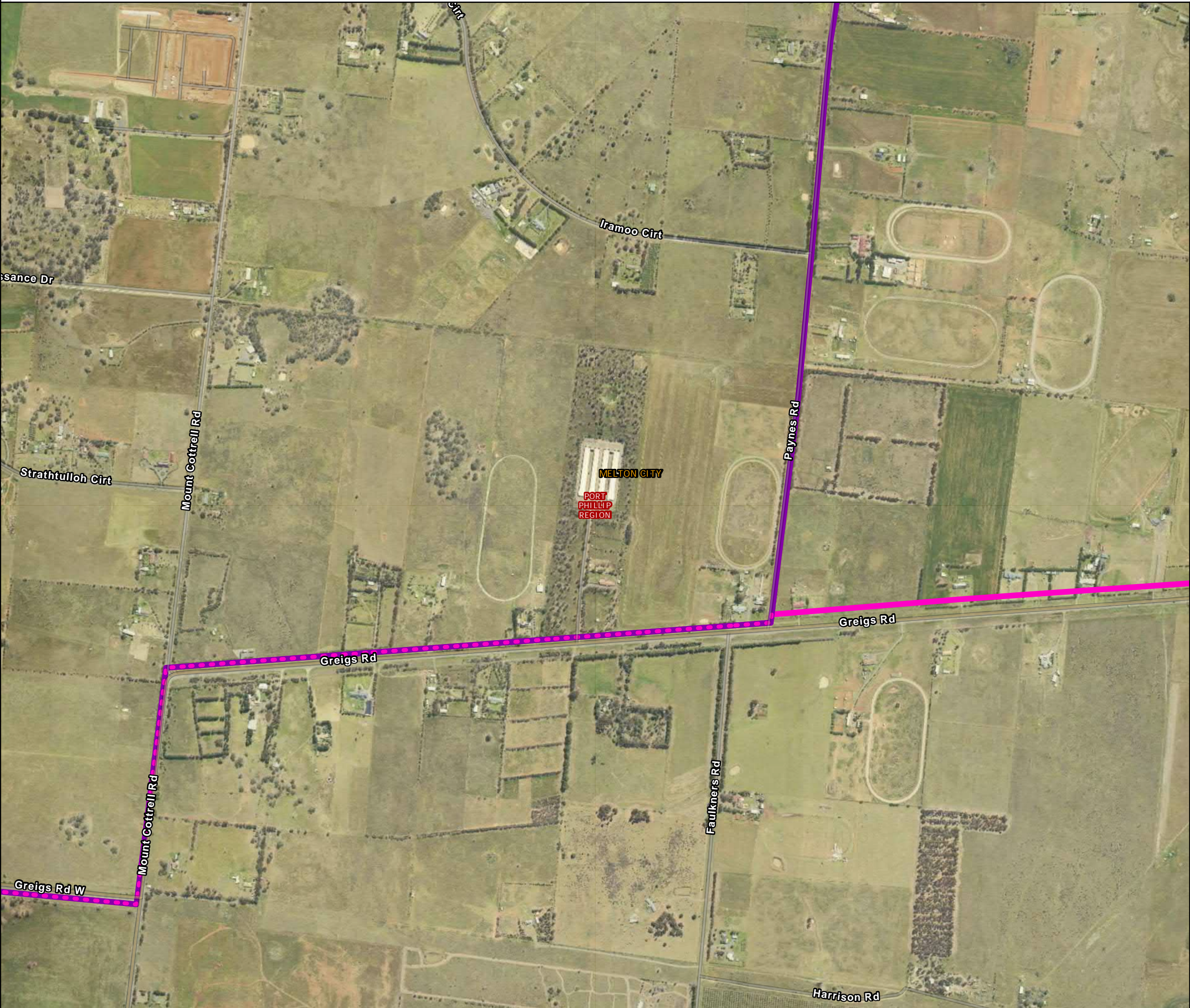
Scale bar: 0, 250, 500 Metres

IS305300

DATA SOURCES
© Commonwealth of Australia (Geoscience Australia) 2006 Geodata Topo 250k Series 3; Vicmap Data © State of Victoria 2021; CH2M Beca 2021. Aerometrex Metromap 2021; ESRI Basemap 2021

COPYRIGHT: The concepts and information contained in this document are the copyright of Jacobs. Use or copying of the document in whole or in part without the written permission of Jacobs constitutes an infringement of copyright. Jacobs does not warrant that this document is definitive nor free of error and does not accept liability for any loss caused or arising from reliance upon information provided herein.





Legend

- S2M Interconnector - Shared alignment
- S2M Interconnector Indicative Assessment Area (Option A)
- S2M Interconnector Indicative Assessment Area (Option B)
- DELWP Region
- LGA Boundary

IS305300

0 250 500

Metres

DATA SOURCES
© Commonwealth of Australia (Geoscience Australia) 2006 Geodata Topo 250k Series 3; Vicmap Data © State of Victoria 2021; CH2M Beca 2021. Aerometrex Metromap 2021; ESRI Basemap 2021

COPYRIGHT: The concepts and information contained in this document are the copyright of Jacobs. Use or copying of the document in whole or in part without the written permission of Jacobs constitutes an infringement of copyright. Jacobs does not warrant that this document is definitive nor free of error and does not accept liability for any loss caused or arising from reliance upon information provided herein.

