

Legend

- S2M Interconnector - Shared alignment
- S2M Interconnector Indicative Assessment Area (Option A)
- S2M Interconnector Indicative Assessment Area (Option B)
- Western Water Recycled Water Plants
- LGA Boundary

Environment and Landscape Overlays

- ESO - Environmental Significance Overlay

Scale: 0 250 500 Metres

IS305300

DATA SOURCES
© Commonwealth of Australia (Geoscience Australia) 2006 Geodata Topo 250k Series 3; Vicmap Data © State of Victoria 2021; CH2M Beca 2021. Aerometrex Metromap 2021

COPYRIGHT: The concepts and information contained in this document are the copyright of Jacobs. Use or copying of the document in whole or in part without the written permission of Jacobs constitutes an infringement of copyright. Jacobs does not warrant that this document is definitive nor free of error and does not accept liability for any loss caused or arising from reliance upon information provided herein.





Legend

- S2M Interconnector - Shared alignment
- S2M Interconnector Indicative Assessment Area (Option A)
- S2M Interconnector Indicative Assessment Area (Option B)
- LGA Boundary

Environment and Landscape Overlays

- ESO - Environmental Significance Overlay

0 250 500
Metres

IS305300

DATA SOURCES
 © Commonwealth of Australia (Geoscience Australia) 2006 Geodata Topo 250k Series 3; Vicmap Data © State of Victoria 2021; CH2M Beca 2021. Aerometrex Metromap 2021

COPYRIGHT: The concepts and information contained in this document are the copyright of Jacobs. Use or copying of the document in whole or in part without the written permission of Jacobs constitutes an infringement of copyright. Jacobs does not warrant that this document is definitive nor free of error and does not accept liability for any loss caused or arising from reliance upon information provided herein.





Legend

- S2M Interconnector - Shared alignment
- S2M Interconnector Indicative Assessment Area (Option A)
- S2M Interconnector Indicative Assessment Area (Option B)
- LGA Boundary

Environment and Landscape Overlays

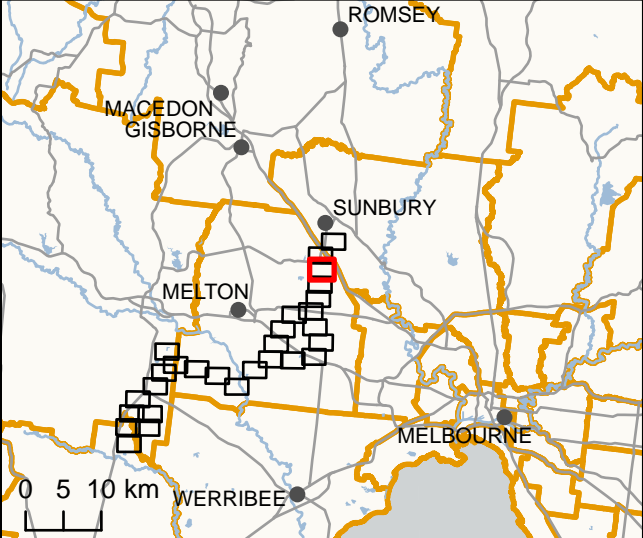
- ESO - Environmental Significance Overlay

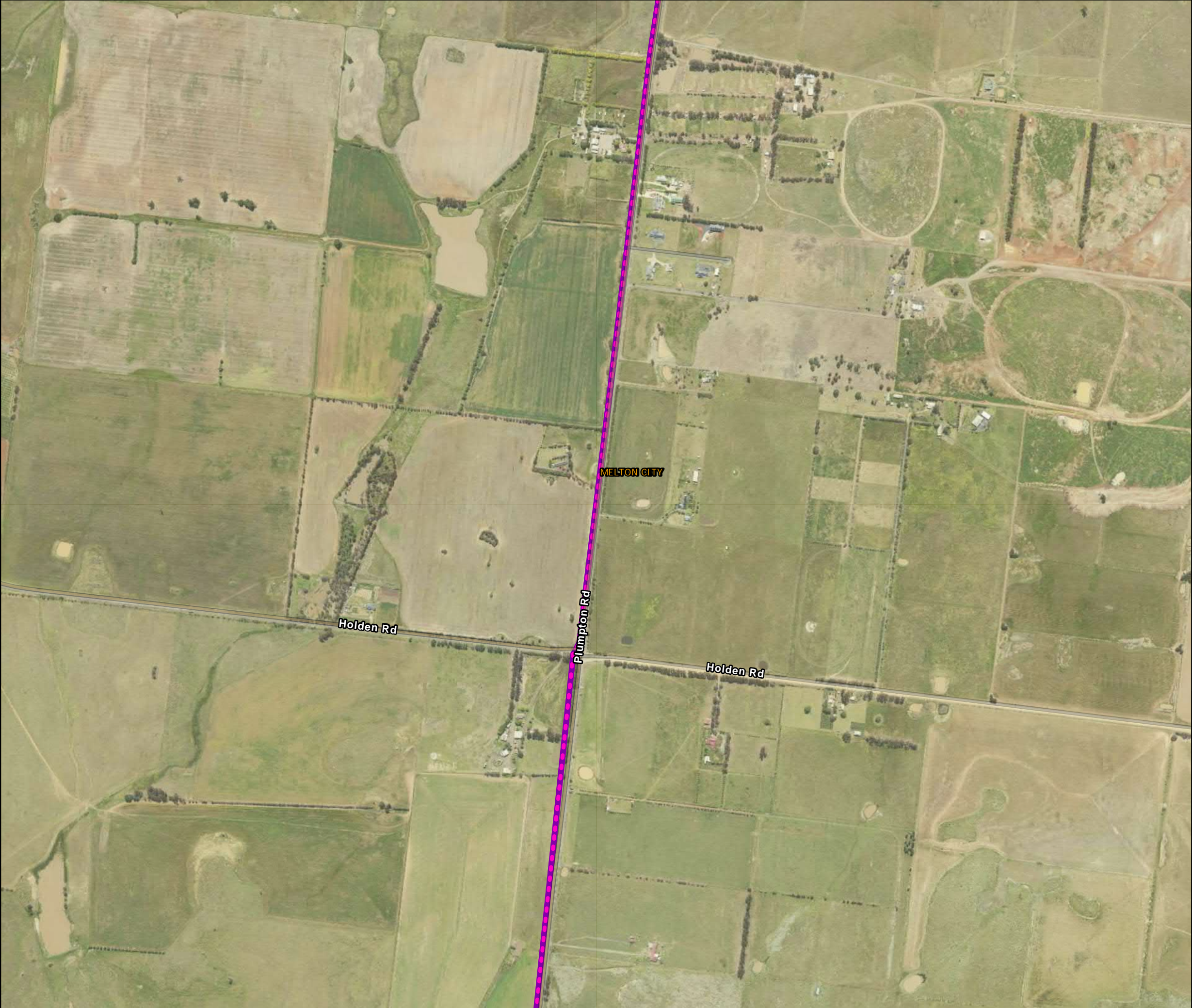
Scale: 0 250 500 Metres

IS305300

DATA SOURCES
© Commonwealth of Australia (Geoscience Australia) 2006 Geodata Topo 250k Series 3; Vicmap Data © State of Victoria 2021; CH2M Beca 2021. Aerometrex Metromap 2021

COPYRIGHT: The concepts and information contained in this document are the copyright of Jacobs. Use or copying of the document in whole or in part without the written permission of Jacobs constitutes an infringement of copyright. Jacobs does not warrant that this document is definitive nor free of error and does not accept liability for any loss caused or arising from reliance upon information provided herein.





Legend

- S2M Interconnector - Shared alignment
- S2M Interconnector Indicative Assessment Area (Option A)
- S2M Interconnector Indicative Assessment Area (Option B)
- LGA Boundary

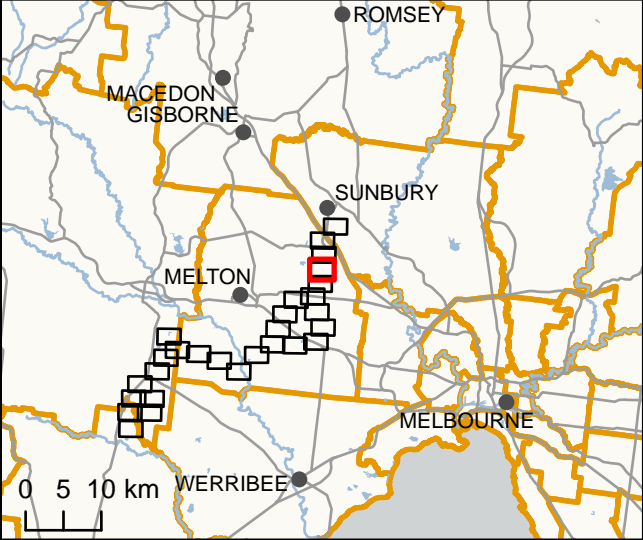
IS305300

0 250 500

Metres

DATA SOURCES
© Commonwealth of Australia (Geoscience Australia) 2006 Geodata Topo 250k Series 3; Vicmap Data © State of Victoria 2021; CH2M Beca 2021. Aerometrex Metromap 2021

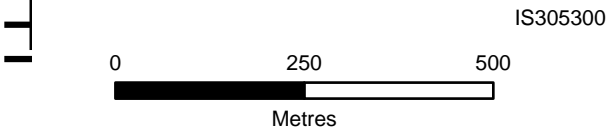
COPYRIGHT: The concepts and information contained in this document are the copyright of Jacobs. Use or copying of the document in whole or in part without the written permission of Jacobs constitutes an infringement of copyright. Jacobs does not warrant that this document is definitive nor free of error and does not accept liability for any loss caused or arising from reliance upon information provided herein.





Legend

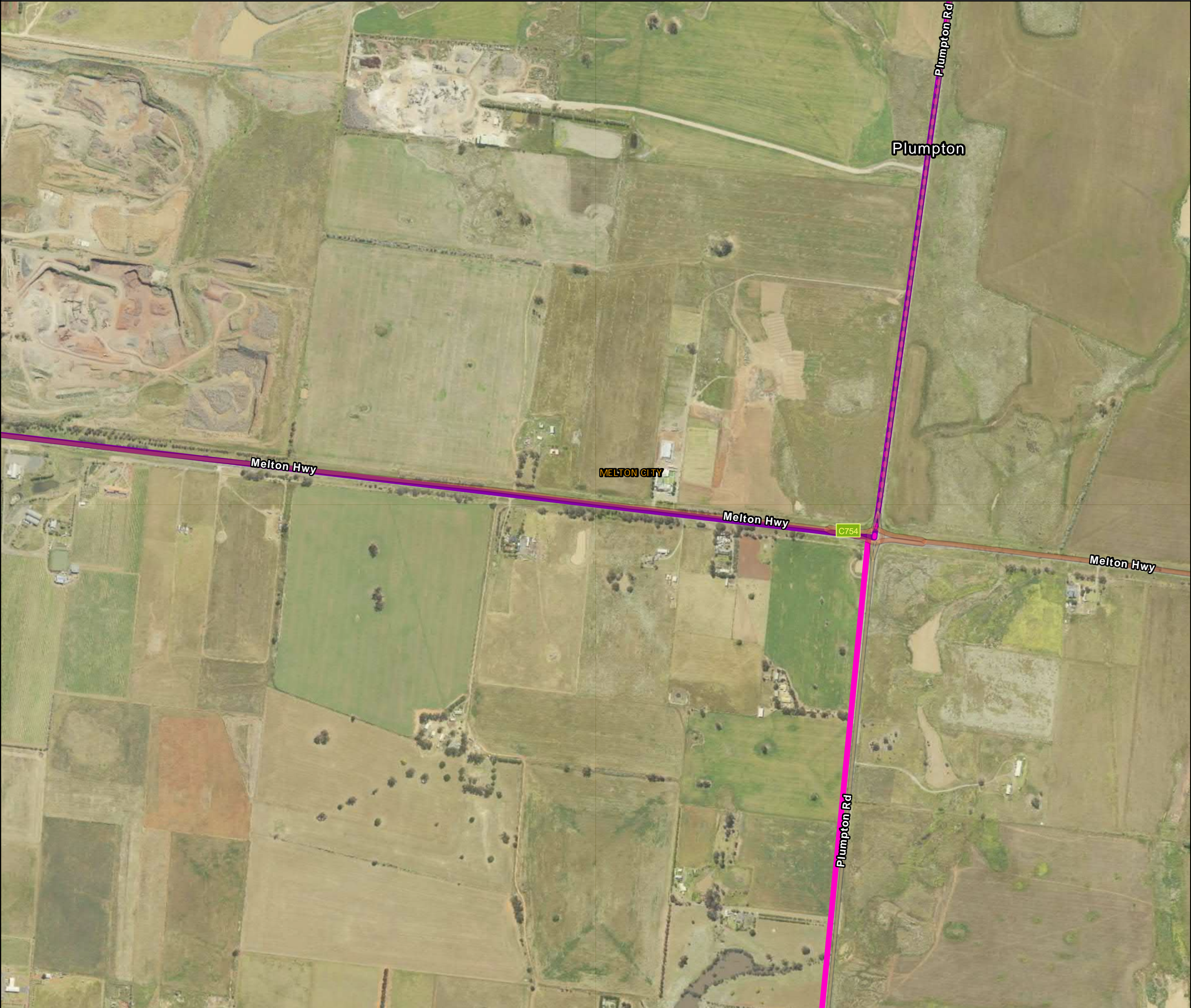
- S2M Interconnector - Shared alignment
- S2M Interconnector Indicative Assessment Area (Option A)
- S2M Interconnector Indicative Assessment Area (Option B)
- LGA Boundary



DATA SOURCES
© Commonwealth of Australia (Geoscience Australia) 2006 Geodata Topo 250k Series 3; Vicmap Data © State of Victoria 2021; CH2M Beca 2021. Aerometrex Metromap 2021

COPYRIGHT: The concepts and information contained in this document are the copyright of Jacobs. Use or copying of the document in whole or in part without the written permission of Jacobs constitutes an infringement of copyright. Jacobs does not warrant that this document is definitive nor free of error and does not accept liability for any loss caused or arising from reliance upon information provided herein.





Legend

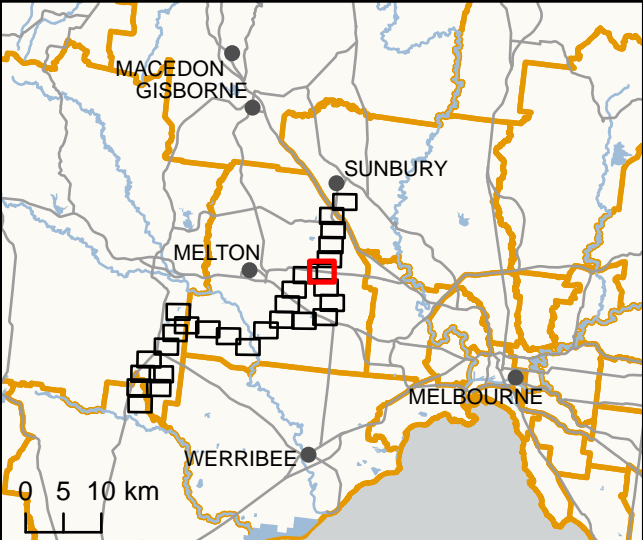
- S2M Interconnector - Shared alignment
- S2M Interconnector Indicative Assessment Area (Option A)
- S2M Interconnector Indicative Assessment Area (Option B)
- LGA Boundary

Scale bar: 0, 250, 500 Metres

IS305300

DATA SOURCES
© Commonwealth of Australia (Geoscience Australia) 2006 Geodata Topo 250k Series 3; Vicmap Data © State of Victoria 2021; CH2M Beca 2021. Aerometrex Metromap 2021

COPYRIGHT: The concepts and information contained in this document are the copyright of Jacobs. Use or copying of the document in whole or in part without the written permission of Jacobs constitutes an infringement of copyright. Jacobs does not warrant that this document is definitive nor free of error and does not accept liability for any loss caused or arising from reliance upon information provided herein.





Legend

- S2M Interconnector Indicative Assessment Area (Option A)
- LGA Boundary
- Environment and Landscape Overlays
- ESO - Environmental Significance Overlay

IS305300

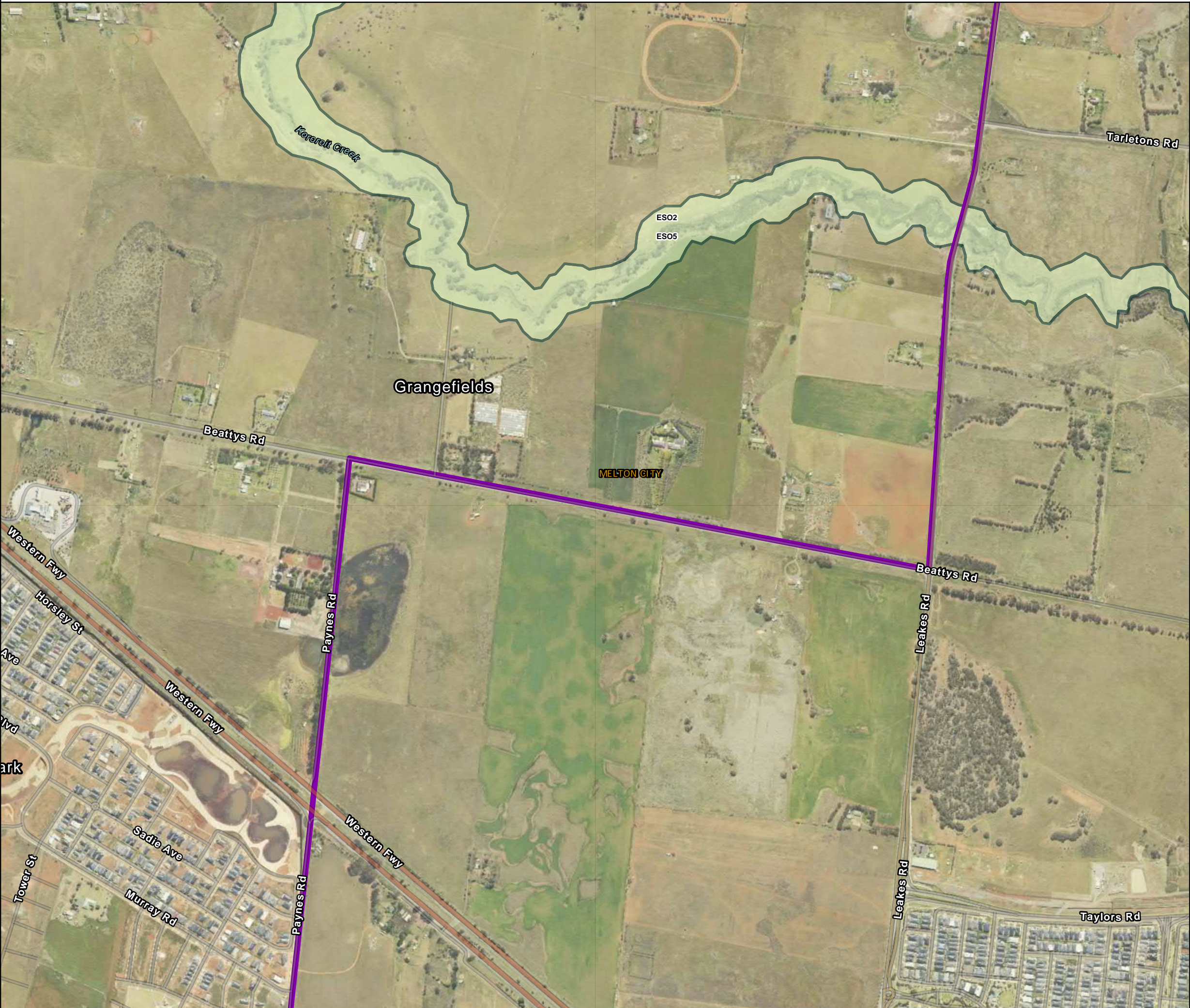
0 250 500

Metres

DATA SOURCES
© Commonwealth of Australia (Geoscience Australia) 2006 Geodata Topo 250k Series 3; Vicmap Data © State of Victoria 2021; CH2M Beca 2021. Aerometrex Metromap 2021

COPYRIGHT: The concepts and information contained in this document are the copyright of Jacobs. Use or copying of the document in whole or in part without the written permission of Jacobs constitutes an infringement of copyright. Jacobs does not warrant that this document is definitive nor free of error and does not accept liability for any loss caused or arising from reliance upon information provided herein.





Legend

- S2M Interconnector Indicative Assessment Area (Option A)
- LGA Boundary

Environment and Landscape Overlays

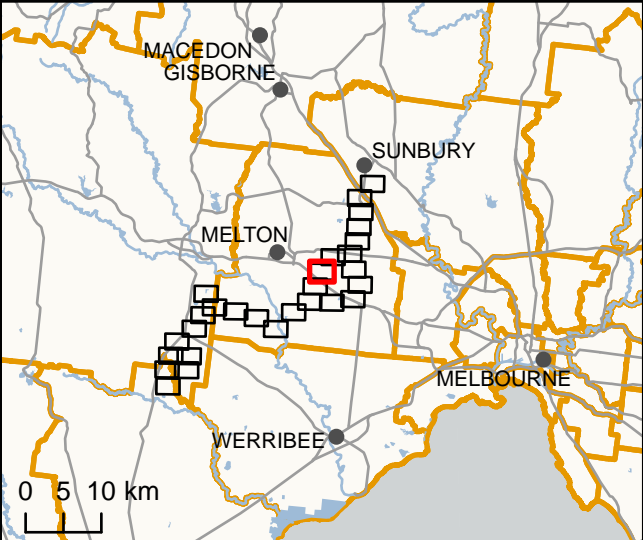
- ESO - Environmental Significance Overlay

Scale: 0 250 500 Metres

IS305300

DATA SOURCES
© Commonwealth of Australia (Geoscience Australia) 2006 Geodata Topo 250k Series 3; Vicmap Data © State of Victoria 2021; CH2M Beca 2021. Aerometrex Metromap 2021

COPYRIGHT: The concepts and information contained in this document are the copyright of Jacobs. Use or copying of the document in whole or in part without the written permission of Jacobs constitutes an infringement of copyright. Jacobs does not warrant that this document is definitive nor free of error and does not accept liability for any loss caused or arising from reliance upon information provided herein.





Legend

- S2M Interconnector Indicative Assessment Area (Option A)
- LGA Boundary

Environment and Landscape Overlays

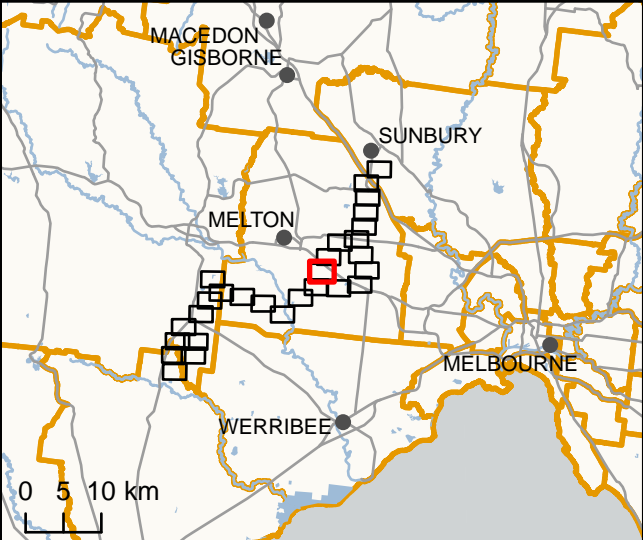
- ESO - Environmental Significance Overlay

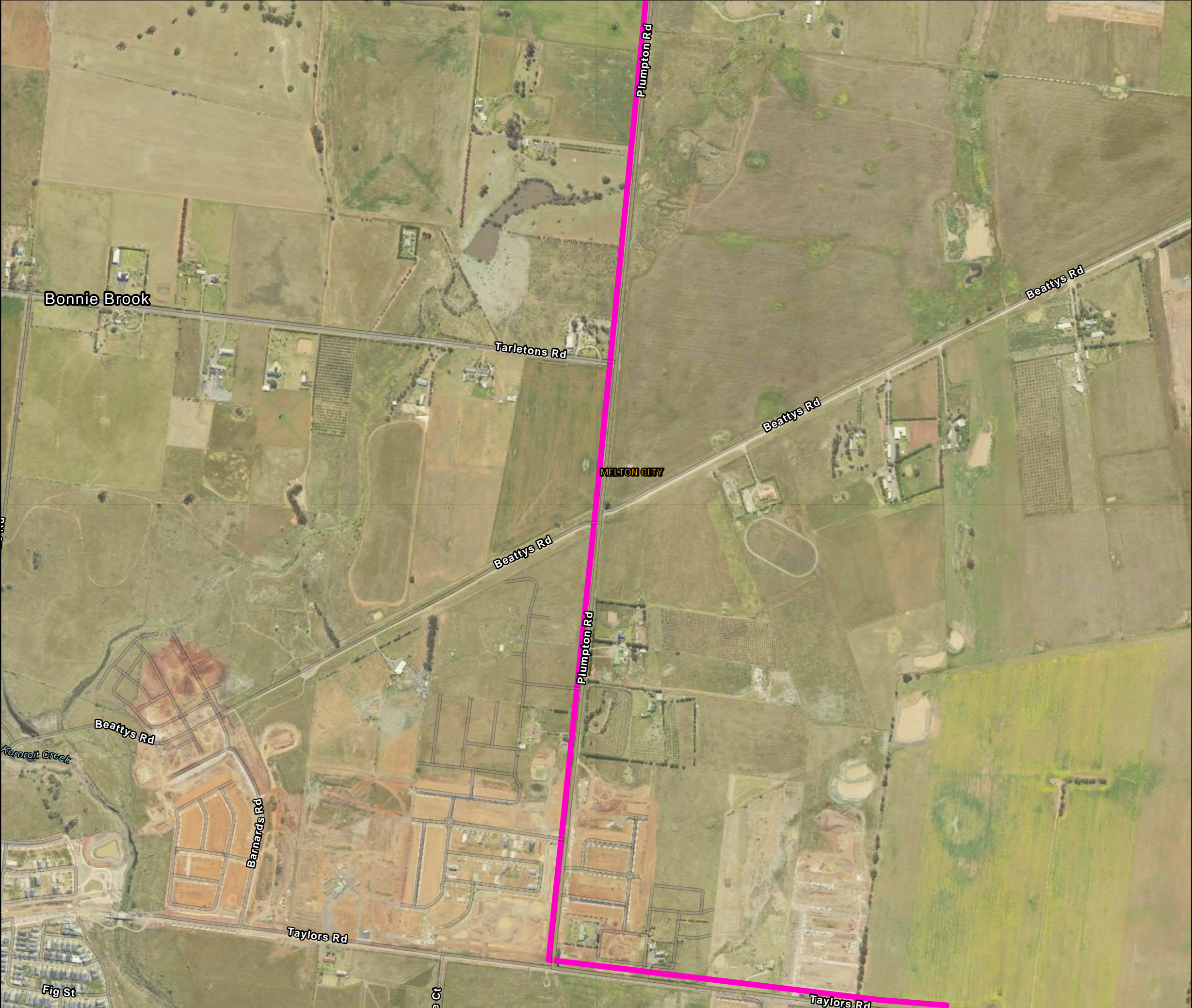
Scale: 0 250 500 Metres

IS305300

DATA SOURCES
© Commonwealth of Australia (Geoscience Australia) 2006 Geodata Topo 250k Series 3; Vicmap Data © State of Victoria 2021; CH2M Beca 2021. Aerometrex Metromap 2021

COPYRIGHT: The concepts and information contained in this document are the copyright of Jacobs. Use or copying of the document in whole or in part without the written permission of Jacobs constitutes an infringement of copyright. Jacobs does not warrant that this document is definitive nor free of error and does not accept liability for any loss caused or arising from reliance upon information provided herein.





Legend

- S2M Interconnector Indicative Assessment Area (Option B)
- LGA Boundary

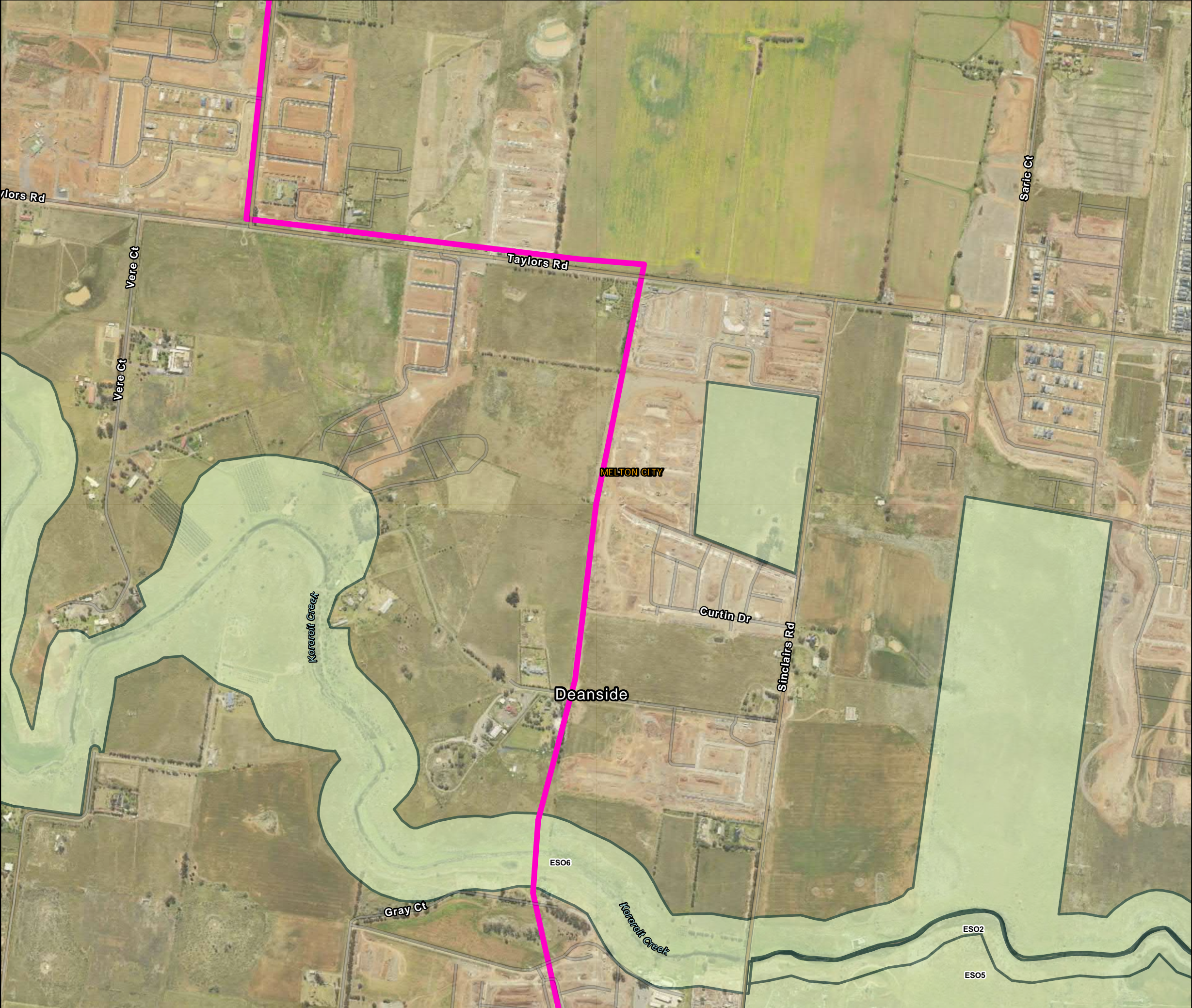
0 250 500 Metres

IS305300

DATA SOURCES
© Commonwealth of Australia (Geoscience Australia) 2006 Geodata Topo 250k Series 3; Vicmap Data © State of Victoria 2021; CH2M Beca 2021. Aerometrex Metromap 2021

COPYRIGHT: The concepts and information contained in this document are the copyright of Jacobs. Use or copying of the document in whole or in part without the written permission of Jacobs constitutes an infringement of copyright. Jacobs does not warrant that this document is definitive nor free of error and does not accept liability for any loss caused or arising from reliance upon information provided herein.





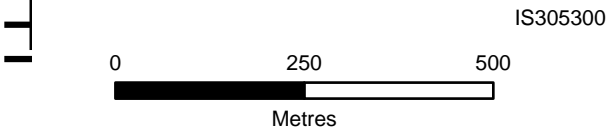
Legend

S2M Interconnector Indicative Assessment Area (Option B)

LGA Boundary

Environment and Landscape Overlays

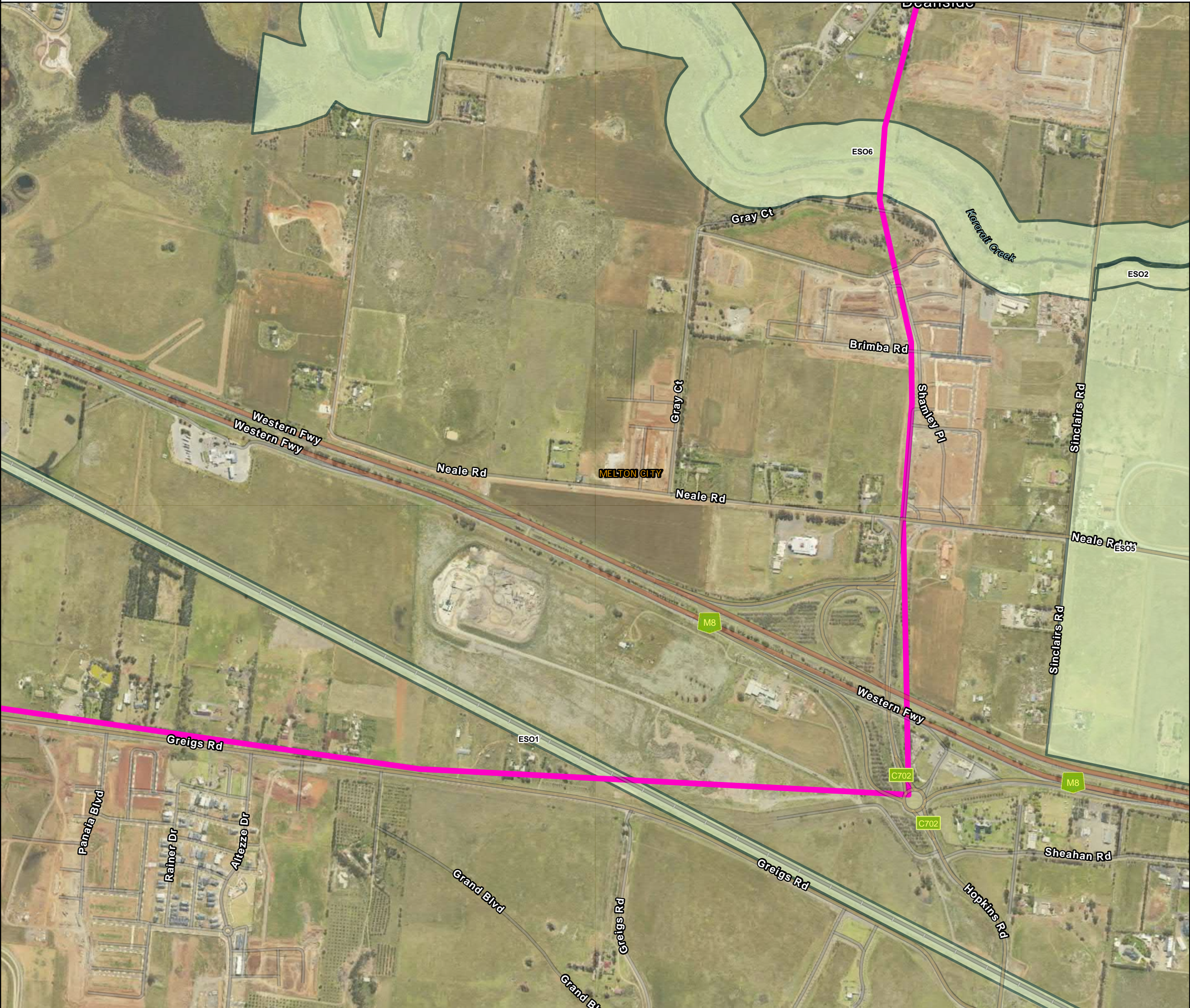
ESO - Environmental Significance Overlay



DATA SOURCES
© Commonwealth of Australia (Geoscience Australia) 2006 Geodata Topo 250k Series 3; Vicmap Data © State of Victoria 2021; CH2M Beca 2021. Aerometrex Metromap 2021

COPYRIGHT: The concepts and information contained in this document are the copyright of Jacobs. Use or copying of the document in whole or in part without the written permission of Jacobs constitutes an infringement of copyright. Jacobs does not warrant that this document is definitive nor free of error and does not accept liability for any loss caused or arising from reliance upon information provided herein.





Legend

- S2M Interconnector Indicative Assessment Area (Option B)
- LGA Boundary

Environment and Landscape Overlays

- ESO - Environmental Significance Overlay

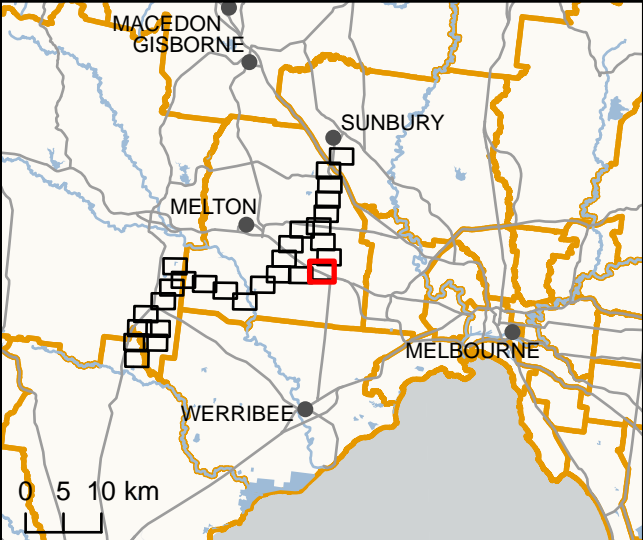
IS305300

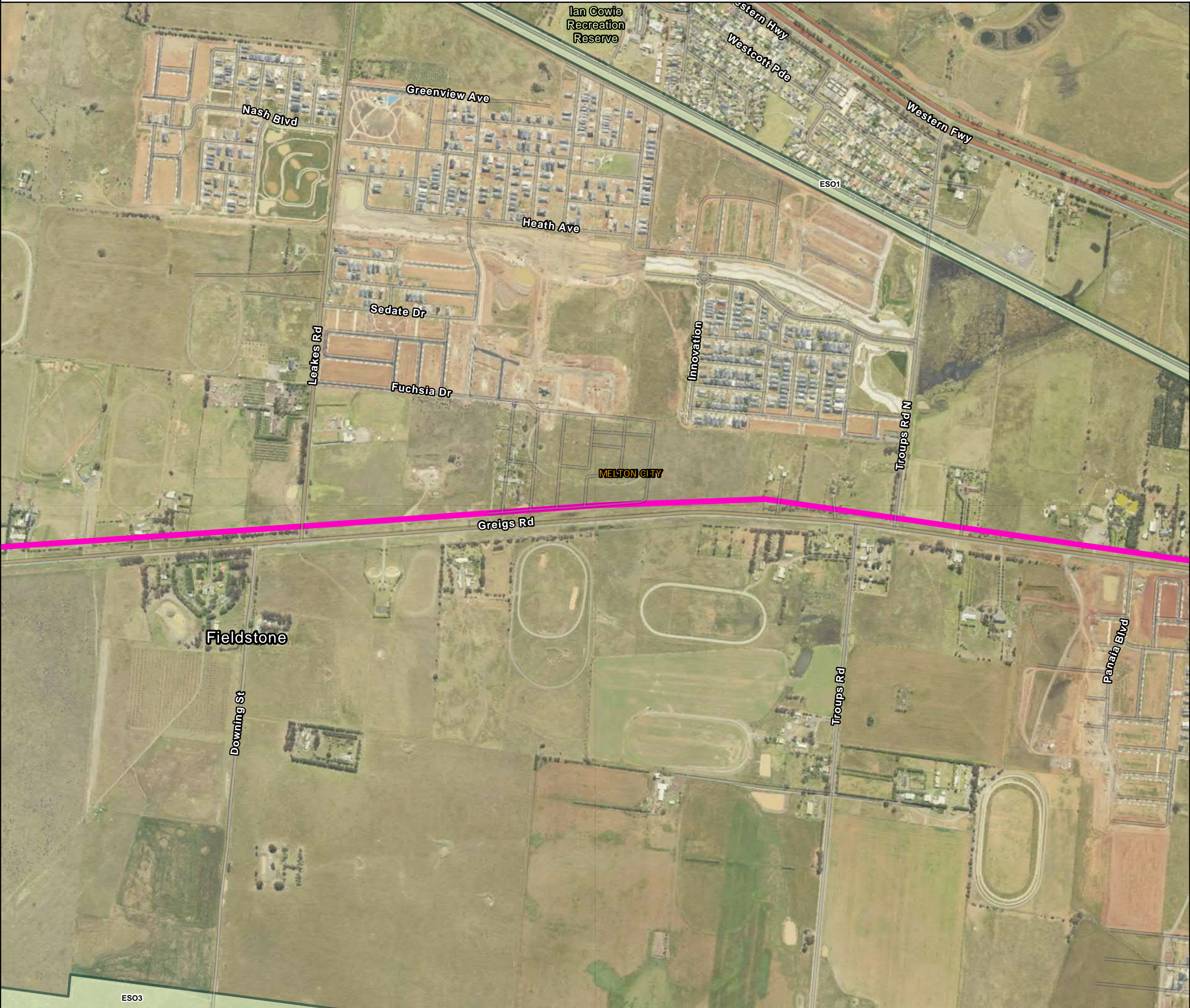
0 250 500

Metres

DATA SOURCES
© Commonwealth of Australia (Geoscience Australia) 2006 Geodata Topo 250k Series 3; Vicmap Data © State of Victoria 2021; CH2M Beca 2021. Aerometrex Metromap 2021

COPYRIGHT: The concepts and information contained in this document are the copyright of Jacobs. Use or copying of the document in whole or in part without the written permission of Jacobs constitutes an infringement of copyright. Jacobs does not warrant that this document is definitive nor free of error and does not accept liability for any loss caused or arising from reliance upon information provided herein.





Legend

- S2M Interconnector Indicative Assessment Area (Option B)
- LGA Boundary

Environment and Landscape Overlays

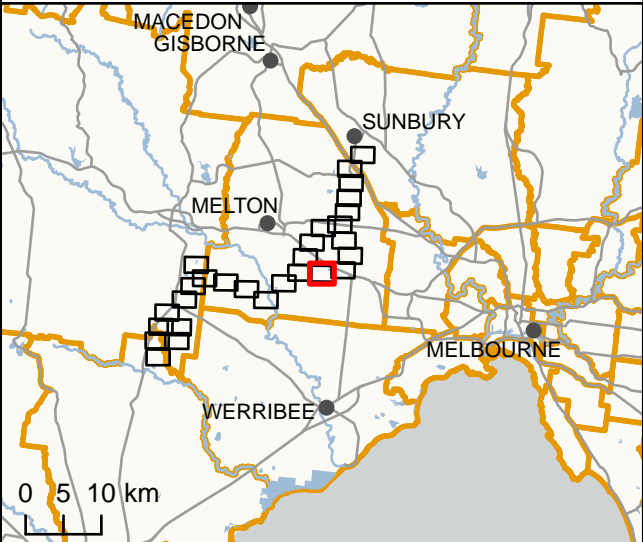
- ESO - Environmental Significance Overlay

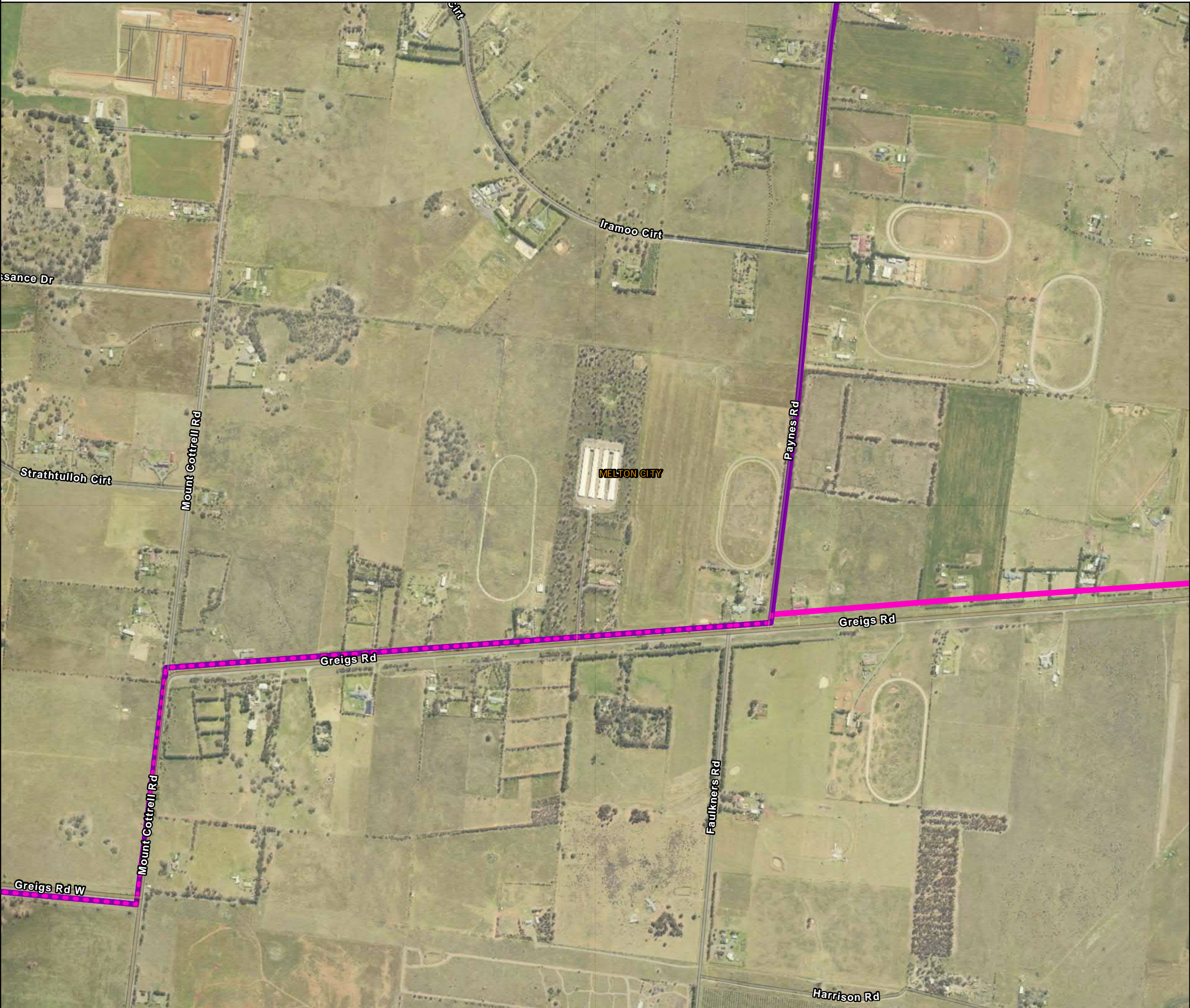
Scale: 0 250 500 Metres

IS305300

DATA SOURCES
© Commonwealth of Australia (Geoscience Australia) 2006 Geodata Topo 250k Series 3; Vicmap Data © State of Victoria 2021; CH2M Beca 2021. Aerometrex Metromap 2021

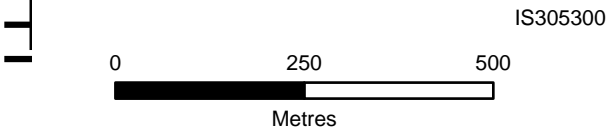
COPYRIGHT: The concepts and information contained in this document are the copyright of Jacobs. Use or copying of the document in whole or in part without the written permission of Jacobs constitutes an infringement of copyright. Jacobs does not warrant that this document is definitive nor free of error and does not accept liability for any loss caused or arising from reliance upon information provided herein.





Legend

- S2M Interconnector - Shared alignment
- S2M Interconnector Indicative Assessment Area (Option A)
- S2M Interconnector Indicative Assessment Area (Option B)
- LGA Boundary



DATA SOURCES
© Commonwealth of Australia (Geoscience Australia) 2006 Geodata Topo 250k Series 3; Vicmap Data © State of Victoria 2021; CH2M Beca 2021. Aerometrex Metromap 2021

COPYRIGHT: The concepts and information contained in this document are the copyright of Jacobs. Use or copying of the document in whole or in part without the written permission of Jacobs constitutes an infringement of copyright. Jacobs does not warrant that this document is definitive nor free of error and does not accept liability for any loss caused or arising from reliance upon information provided herein.

