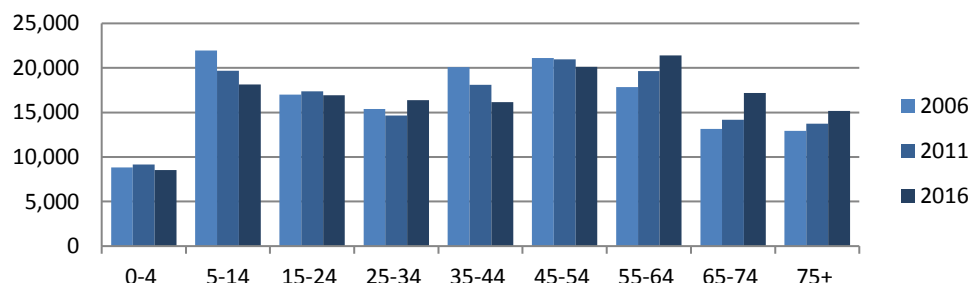


North West (SA4)

Count of persons by Usual Residence	Total 2006	148,295	Period	5-year change	Annual rate
	Total 2011	147,427	2006-11	868 decrease	-0.1% p.a.
	Total 2016	150,035	2011-16	2,608 increase	0.4% p.a.

Age Structure, 2006 to 2016

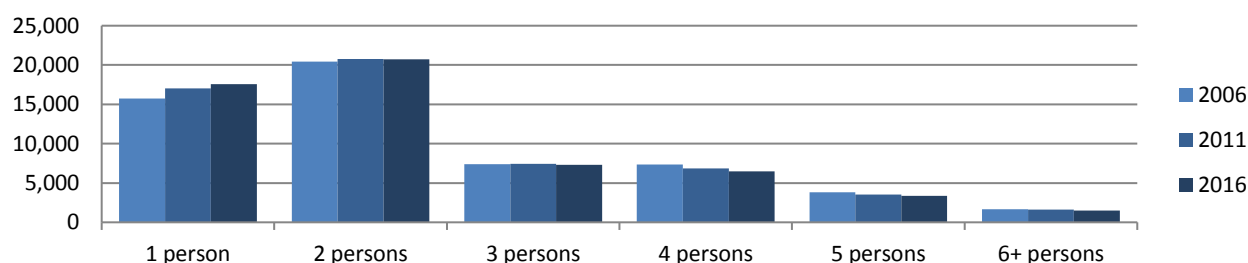


Proportions 2016

0-4 yrs	5.7%
5-14 yrs	12.1%
15-24 yrs	11.3%
25-34 yrs	10.9%
35-44 yrs	10.8%
45-54 yrs	13.4%
55-64 yrs	14.3%
65-74 yrs	11.5%
75+ yrs	10.1%

	2006	2011	2016
Median population age in years	40	42	44
Proportion indigenous persons	2.0%	2.5%	2.7%
Proportion Australian citizens	92.1%	90.8%	87.5%
Proportion born in Australia	87.1%	86.1%	81.7%
Proportion born elsewhere	7.2%	8.4%	8.9%
Proportion speaking English only at home	91.0%	89.4%	84.8%
Proportion speaking other language at home	5.0%	6.0%	6.6%

Number of households by number of persons usually resident, 2006 to 2016



	2006	2011	2016
Average household size	2.4	2.4	2.3
Average persons per bedroom	0.8	0.8	0.8
Proportion of households with children	37.4%	35.3%	32.7%
Proportion couple-only households	28.7%	28.3%	27.4%
Proportion lone person households	26.9%	28.4%	28.4%
Proportion group households	2.6%	2.5%	2.7%
Proportion of dwellings rented	23.3%	25.1%	24.3%
Proportion owned with mortgage	41.9%	39.4%	37.5%
Proportion owned outright	28.2%	28.5%	27.6%