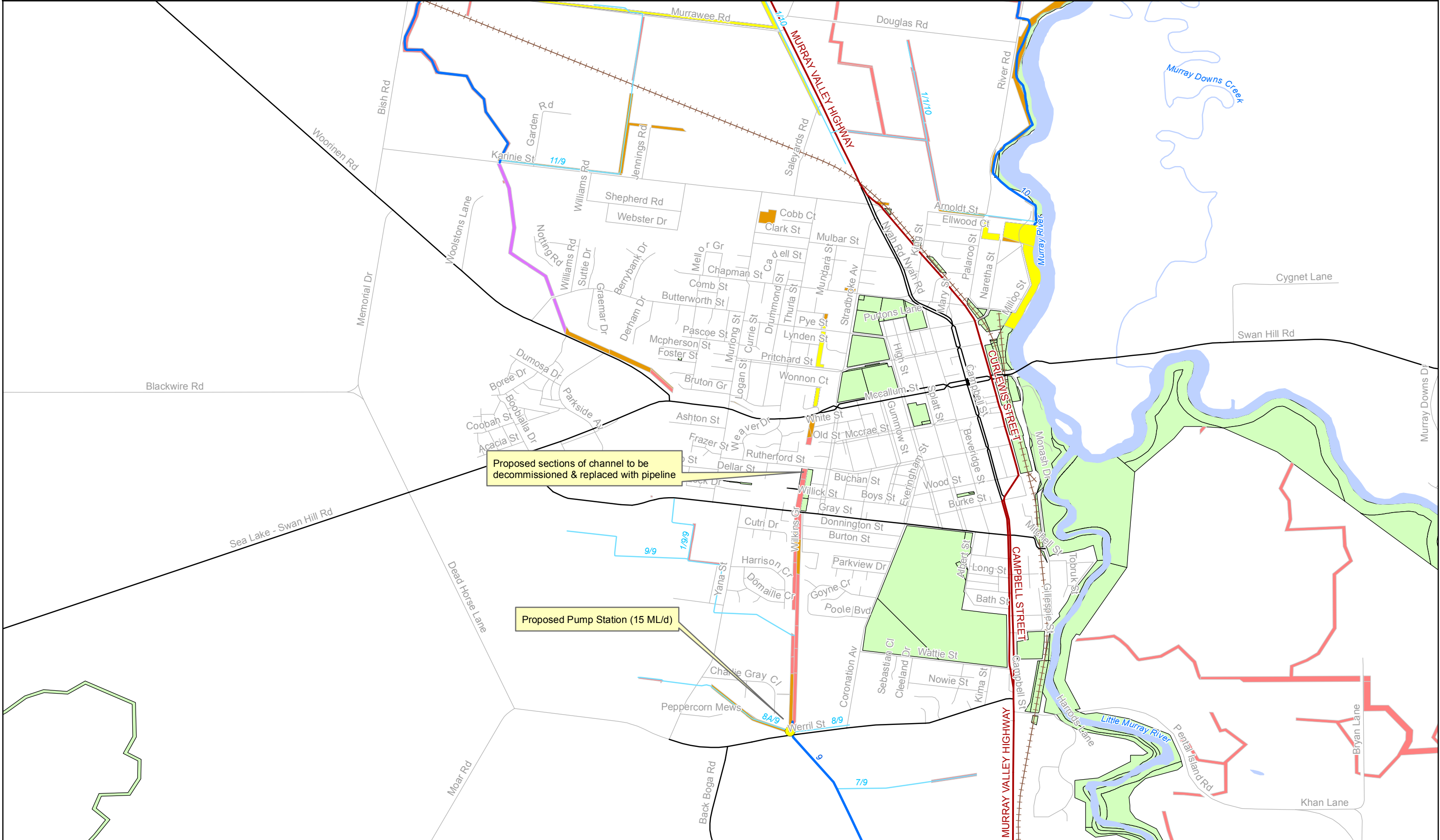


Swan Hill Modernisation Project

Construction Area 3 - Land Tenure



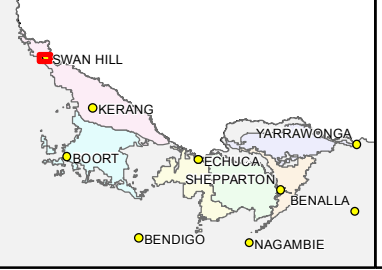
Proposed sections of channel to be decommissioned & replaced with pipeline

Proposed Pump Station (15 ML/d)

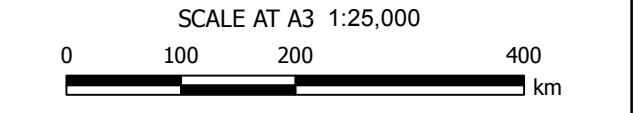


CP-13-049
03 OCT 2013

GOULBURN-MURRAY WATER
40 CASEY STREET (PO BOX 165)
TATURA VIC 3616
Ph (03) 5833 5500 Fax (03) 58245827
gissupport@g-mwater.com.au



Backbone	Highway	Waterway	Crown (Appropriated/Vested for SR & WSC)
Non-Backbone	Major Road	Waterbody	GMW Freehold
	Semi-Major Road	Wetland	Easement
	Minor Road		Channel Reserve
	Railway		Crown



The content of this product is provided for information purposes only. No claim is made as to the accuracy or authenticity of the content of the product. In no event will G-MW, its agents, instrumentalities and employees be liable for the accuracy of the information contained within this product nor its use or reliance placed on it. The information used within this product is provided on the basis that all persons accessing the information undertake responsibility for assessing the relevance and accuracy of its content.
Z:\2013_Products_CP\CP-13-049\CP-13-049 A3-L Swan Hill Site 3.mxd