



Character Area 3.2

Goldfields Forests

3.2 GOLDFIELDS FORESTS

This Character Area features the hills and rolling topography of the southern uplands, and is covered in a dense vegetation that is forested in native vegetation and plantations. Creeks and rivers have created deeply incised gorges with exposed quartz, basalt and granite bedrock.

This area was heavily mined in the gold rush period and retains much of its gold rush character with Australia's first National Heritage Park at Castlemaine Diggings (to the north of the Study Area) displaying numerous gold mining remains.

The forest edges are cleared for agriculture with residential development set back from roadsides and largely screened by vegetation.

Key Features

- Thickly vegetated
- Steep escarpments
- Exposed granite, basalt and quartz
- Mineral springs
- Castlemaine Diggings National Heritage Park
- State Forests
- Gold mining remains
- Numerous rivers and streams

Settlements

- Franklinford
- Hepburn Springs
- Daylesford (part)



Exposed boulders within the Wombat State Forest



Granite boulders in the Deep Creek mineral spring



An old Cornish miners hut within the Castlemaine Diggings National Heritage Park



A clearing within the forest

Figure 1 Goldfields Forests Overview

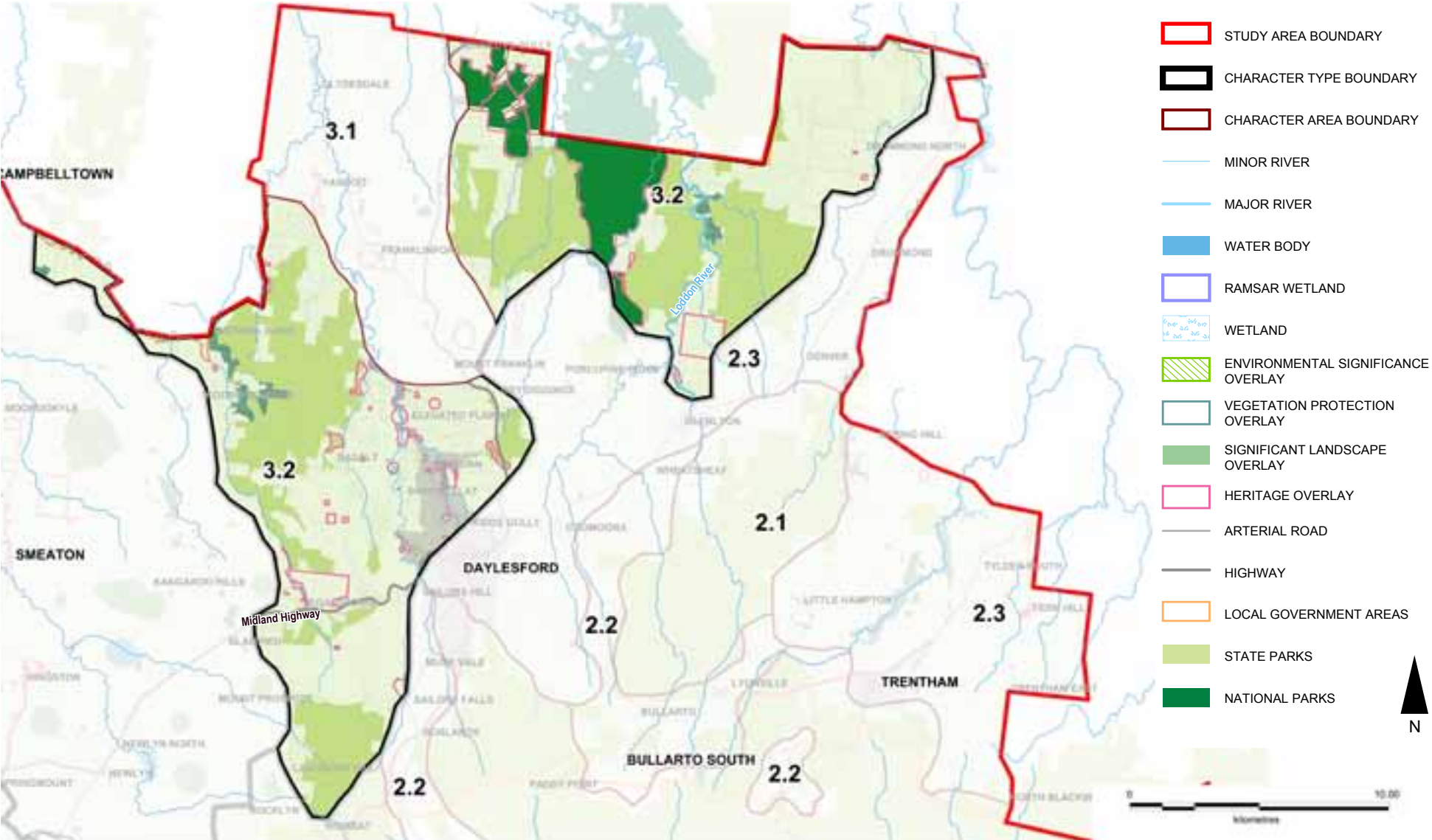


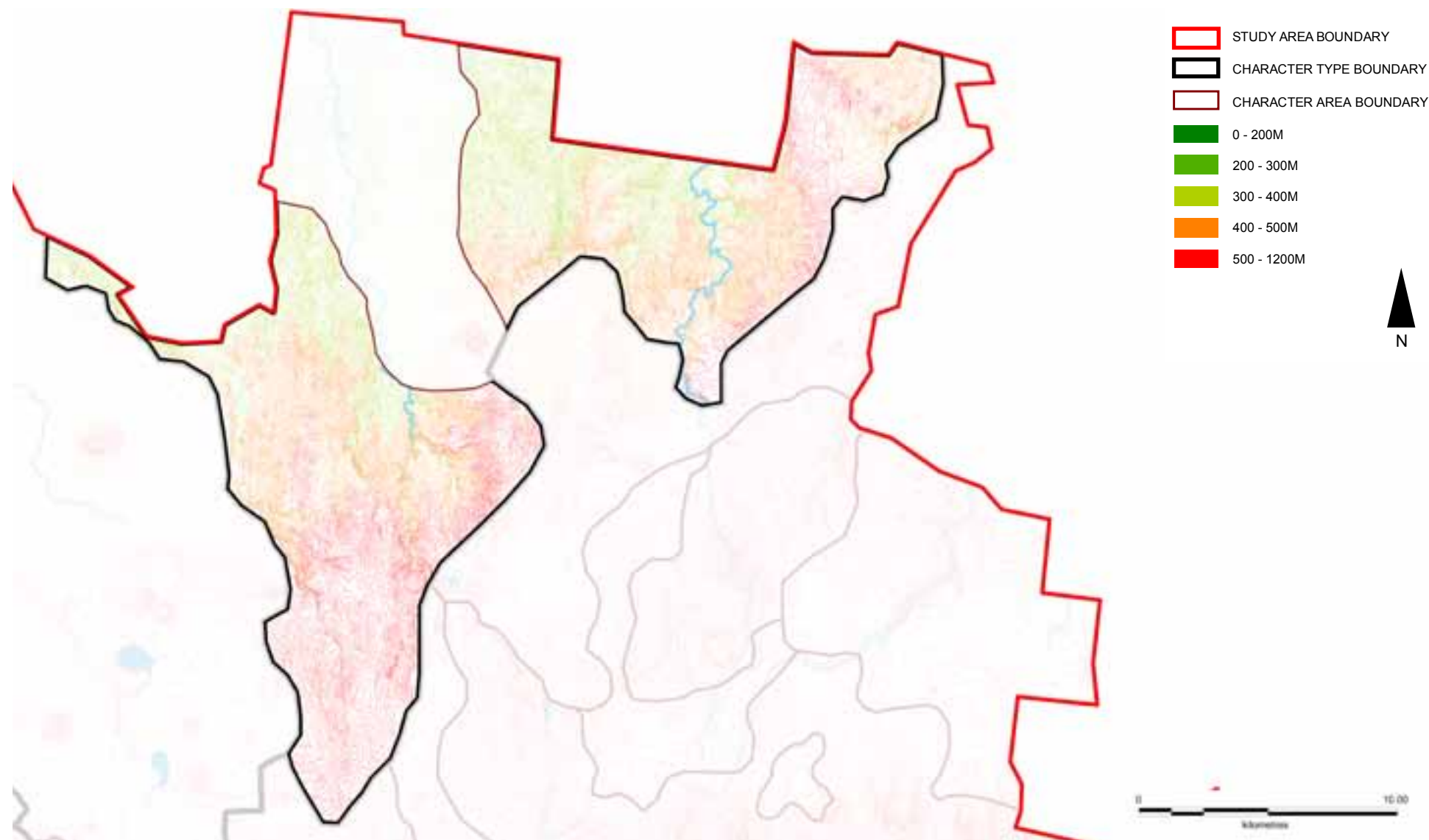
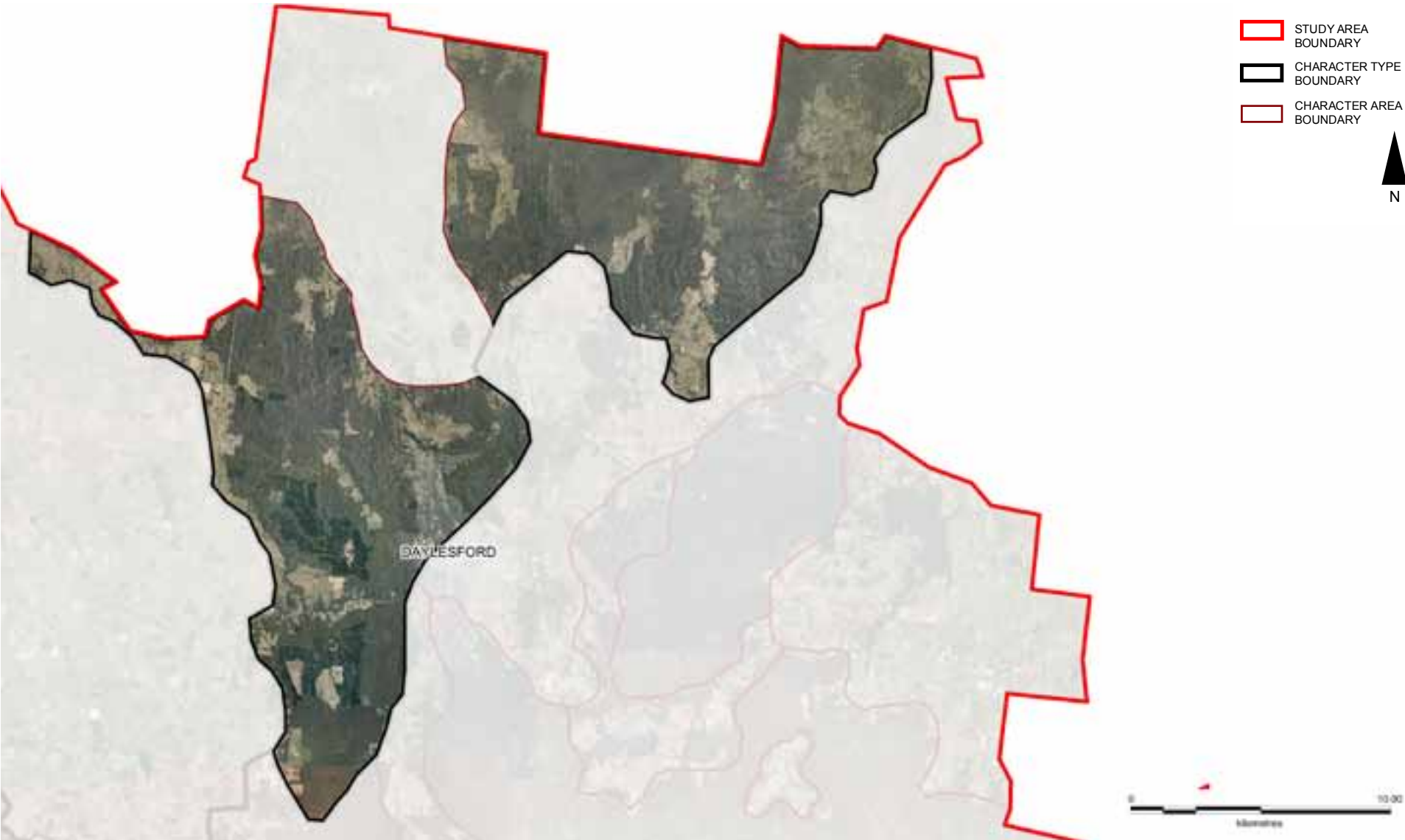
Figure 2 Goldfields Forests Landform

Figure 3 Goldfields Forests Aerial



PATTERN OF VIEWING

The main viewing corridors for this Character Area are:

- Midland Highway
- Daylesford - Newstead Road
- Limestone Road
- Hepburn - Newstead Road
- Vaughan Springs Road
- Basalt Road
- Green Gully Road

Views within the forested areas are narrow, contained by tall vegetation. At the forest edges and in clearings views open up over cleared paddocks and occasional built form, terminating in a vegetated backdrop.

Roads are often cut into steep sided rises exposing the bedrock to the surface.

Views over this Character Area are afforded at gaps in the vegetation that cloaks the steep slopes of Mount Franklin.



Looking north on Basalt Road, contained views and exposed bedrock.



Looking East on Vaughan Springs Road, views are directed forwards. Exposed rock on forest floor



Looking west from Mount Franklin over the thick forested Character Area



A clearing within the forest on Green Gully Road allows glimpsed views towards residential development

LANDSCAPE VALUES

Historic

- Castlemaine Diggings Heritage Park, listed on the National Heritage List as a Historic Heritage, also protected by Hepburn HO981
 - one of the most outstanding gold rush era sites in Australia
 - historically significant as an authentic and intact early 1850s goldfield with a rich collection of mining sites and landscapes
 - particularly important large areas relating to the early phase of the great Australian gold rushes
 - a place of strong aesthetic significance

Environmental/Scientific

- Mineral springs & groundwater, protected by Hepburn ESO2, a natural, cultural & economic asset
- Protected areas on the IUCN list
 - Fryers Ridge Nature Conservation Reserve, Category IA (Strict Nature Reserve)
 - Dyers Falls & Loddon River Scenic Reserves, Category III (Natural Monument or Feature)
 - Drummond I90, Glamorgan Reef & Holcombe I84 Bushland Reserves, Category IV (Habitat/Species Management Area)

Social

- Wombat State Forest, a tourist destination
- Water catchments which provide domestic water supply, protected by Hepburn ESO1

LANDSCAPE PROTECTION & MANAGEMENT

Planning Scheme Policies & Controls

Only the Hepburn Planning Scheme applies to this Character Area.

Key Clauses

- Clause 22.02 Mineral Springs Protection

Key Zones

- FZ
- PCRZ
- RLZ at Basalt, Blampied, Drummond North, Hepburn, Musk Vale, Porcupine Ridge, Sailors Falls, Shepherds Flat
- RCZ

Key Overlays

- ESO1: Proclaimed Catchment Protection
- ESO2: Mineral Springs & Groundwater Protection
- HO including
 - HO617: Deep Creek Mineral Springs Reserve
 - HO626: Jim Crow Creek Heritage Mining Precinct
 - HO636: Lithia Springs Reserve
 - HO637: Pise Hut Remains, Wombat State Forest
 - HO640: Daylesford-Upper Loddon State Forest water channel
 - HO692: Jim Crow Creek Gold Mining Diversion Sluice
 - HO732: Tipperary Mineral Springs Reserve
 - HO735: Hepburn Mineral Springs Heritage Precinct
 - HO741: Blowhole Gold Diversion Tunnel

- HO965 Mine Tunnel, Tunnel Entrance & Rail Tracks, South Star Mine
- HO971: Breakneck Gorge Gold Puddling Site
- HO977: Maxwell Consolidated Quartz Gold Mine
- HO981: Castlemaine Diggings National Heritage Park
- VPO1: Roadside Conservation & Remnant Vegetation
- WMO / BMO
- EMO
- RO2: Sailors Falls Estate



Character Area 3.3

Central Goldfields

3.3 CENTRAL GOLDFIELDS

The Central Goldfields Character Area displays a rolling but irregular topography crossed by ridge-like rises. The major land use is agriculture with some cropping.

Remnant vegetation is a feature with Red Gums visible in low lying paddocks. Native vegetation appears along roadsides and creek lines.

Granite boulders and basalt bedrock are exposed on hillsides and road cuttings.

Key Features

- Hilly to undulating agricultural land with exposed granite outcrops
- Vegetated low points
- Areas of remnant vegetation

Settlements

- Amphitheatre



Exposed bedrock on slopes



Remnant vegetation remains in some paddocks



Hilly, but irregular, topography

Figure 1 Central Goldfields Overview

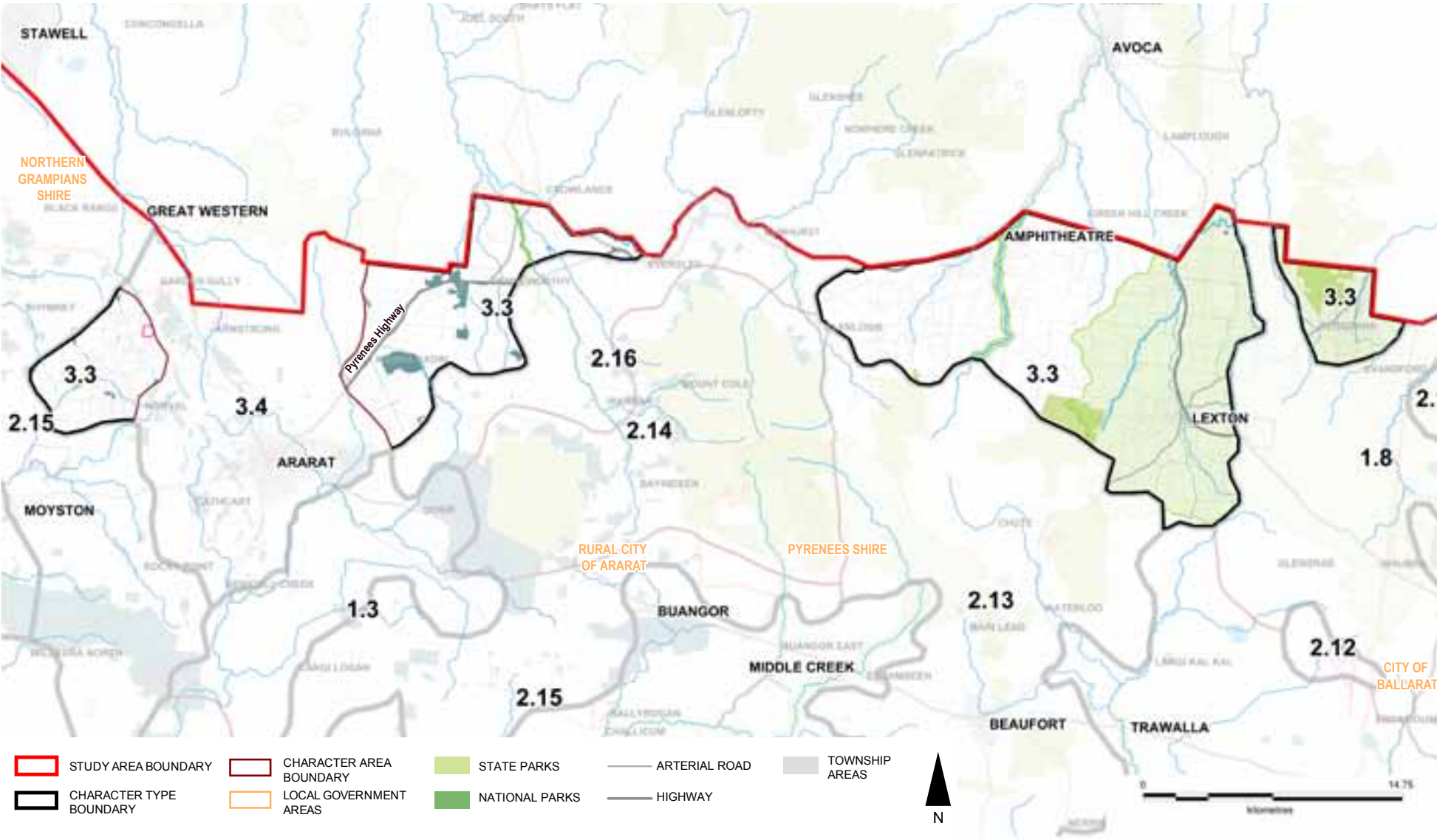


Figure 2 Central Goldfields Landform

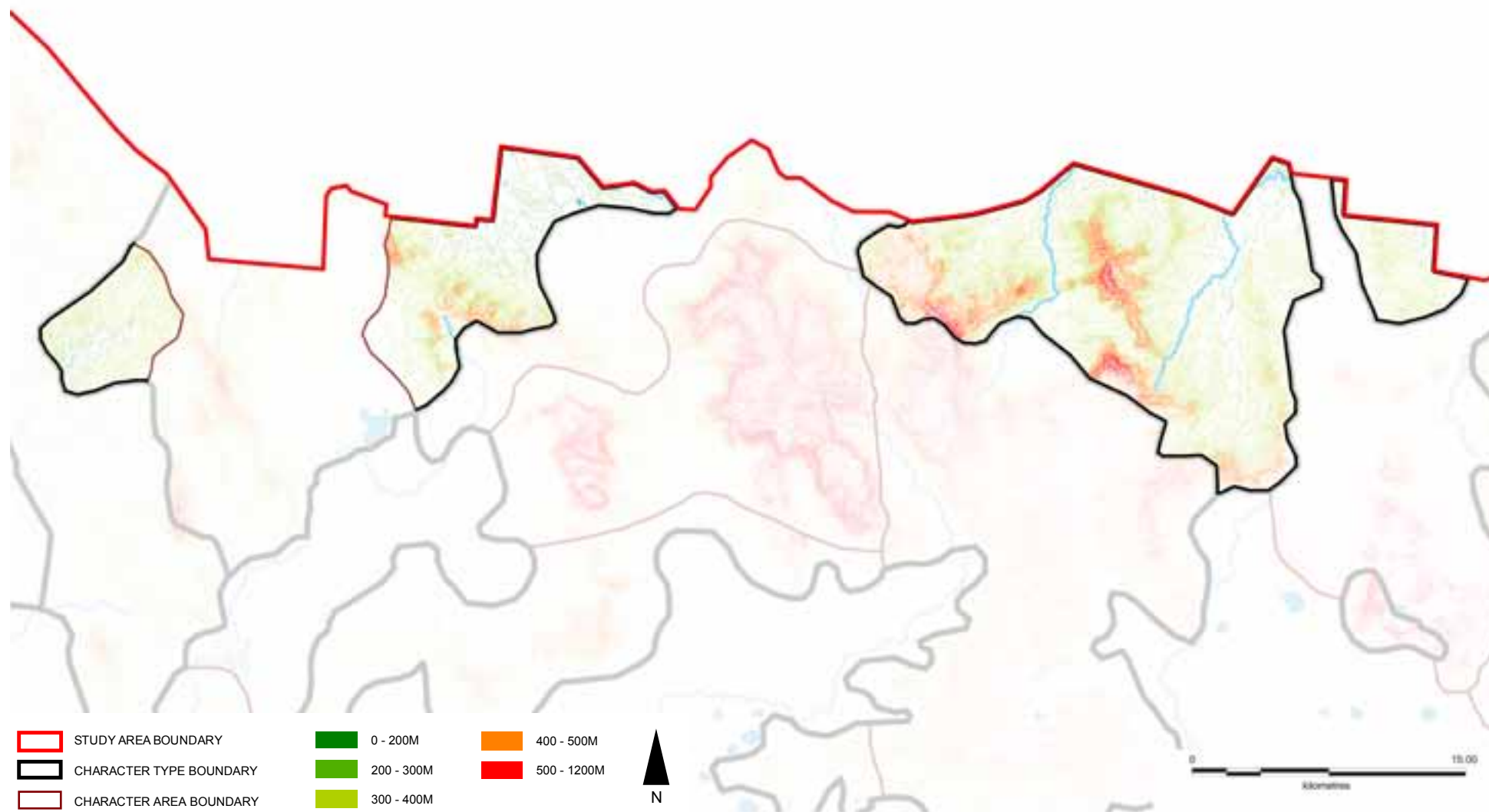
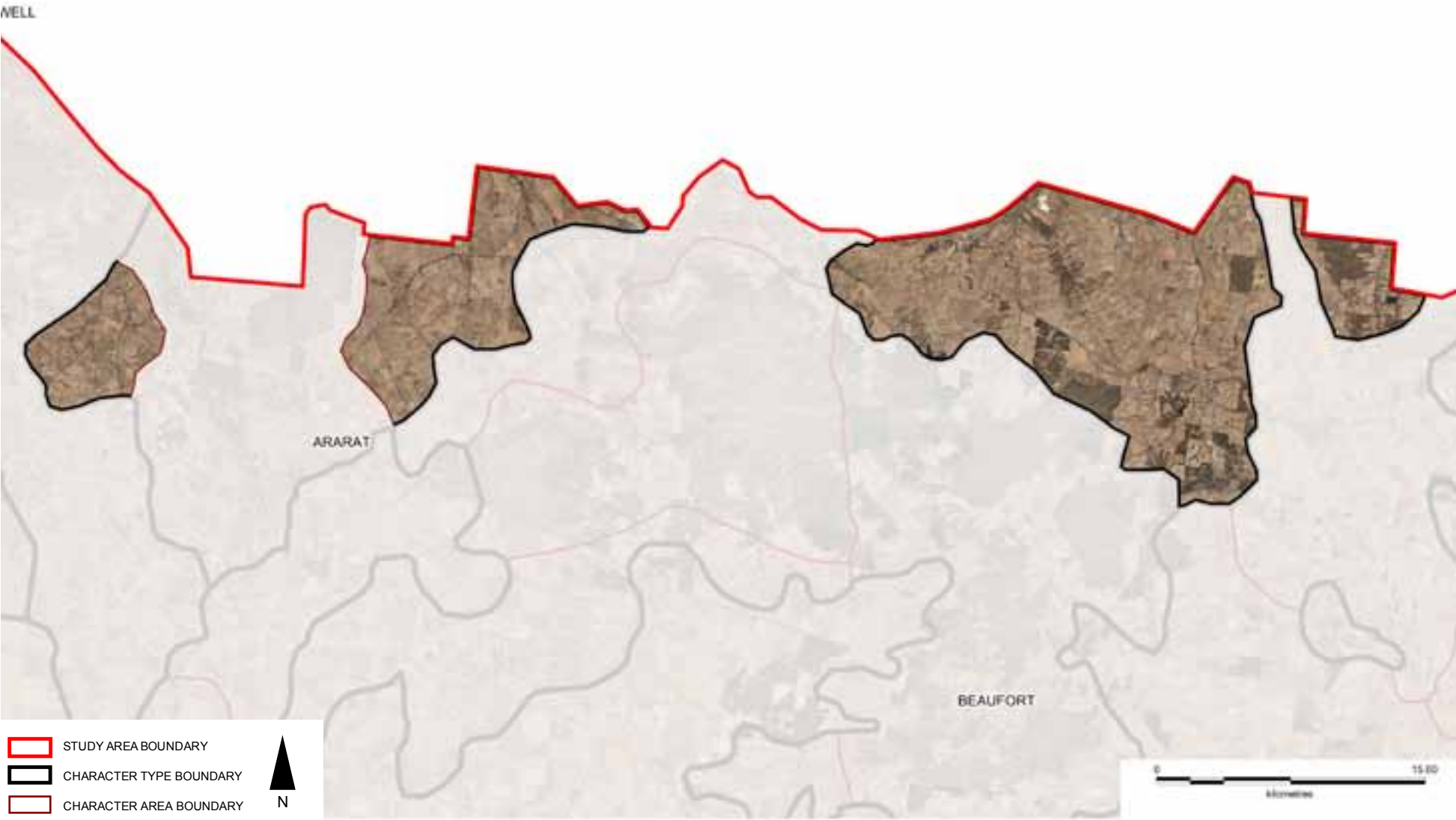


Figure 3 Central Goldfields Aerial



PATTERN OF VIEWING

The main viewing corridors for this Character Area are:

- Pyrenees Highway
- Sunraysia Highway
- Rhymney Road
- Moyston - Great Western Road
- Ararat - St Arnaud Road
- Lexton - Ararat Road
- Amphitheatre Road

Views within this Character Area include medium range views terminating at rising topography to long views across undulating agricultural land.



Looking west on Back Amphitheatre across undulating agricultural land, views terminate at forested hills



On Richards Road north of Amphitheatre built form is sited adjacent to the roadside, views are medium in range terminating at forested hills and consistently filtered by vegetation which is set back from the roadside



Looking south from the Pyrenees Highway, views are filtered by native vegetation



Looking west on the Lexton - Ararat Road towards one of the ridge like rises crossing this Character Area

LANDSCAPE VALUES

Historic

- Locally significant Woodstock Homestead bluestone woolshed, 1840s Colonial-style, listed by National Trust, on Register of the National Estate & protected by Ararat HO31

Environmental/Scientific

- Protected areas on the IUCN list
 - Lexton Nature Conservation Reserve, Category IA (Strict Nature Reserve)
 - Burbank Creek Streamside Reserve & Granite Hill Scenic Reserve, Category III (Natural Monument or Feature)
 - Lexton H5 & H6 Bushland Reserves, Category IV (Habitat/Species Management Area)
- Significant vegetation, protected by VPOs, including:
 - habitat for Large-fruit Fireweed at Ararat railway and along Pyrenees Highway, vulnerable plant on EPBC Act list
 - Ararat railway area, also an important link and biodiversity corridor
 - Hopkins River Road Themeda dominated grassland, North Ballarat
 - Warrak Road north remnant Red Gum woodland
 - Ararat Hills remnant vegetation
 - Scattered Red Gums, an important habitat and links
 - Norval remnants including Grassy Woodland, native grasses and important links for Curtis Creek
 - Pentlands Creek Road vegetation remnants including significant Red Gum overstorey
 - Rhymney Reef Yellow Gum Woodland

- Red Gum/ Yellow Box Grassy Woodland and good cover of Themeda at Warra Yankin Rail Reserve
- Thomas Road native grassland remnants, Dunneworthy
- Pyrenees Highway remnants, Eversley including Long-leaf Box/Red Box and Yellow Box/ Red Box Heathy Woodland
- Hopkins River Road Grassy Woodland, Ararat
- Locally significant watercourses, waterbodies & wetlands, protected by Ararat ESO2 & Pyrenees ESO2
- Locally significant sites of biodiversity, protected by Ararat ESO3
- Locally significant vegetation, protected by Ararat VPO1 & VPO2 & Pyrenees VPO1

Social

- Primary sources of potable water supply for townships, protected by Pyrenees ESO1

LANDSCAPE PROTECTION & MANAGEMENT

Planning Scheme Policies & Controls

This Character Area is subject to the Ararat and Pyrenees Planning Schemes.

Key Zones

- FZ
- PCRZ (Pyrenees only)
- RLZ at Evensford

Key Overlays

- Ararat ESO2: Watercourses, Waterbody & Wetland Protection Areas
- Ararat ESO3: Habitat Protection Areas
- Pyrenees ESO1: Designated Water Supply Areas
- Pyrenees ESO2: Watercourse Protection
- Ararat HO113: “Westgate” buildings, Armstrong
- Pyrenees HO31: “Woodstock” Homestead, Lexton
- Ararat VPO1: Significant & Remnant Vegetation Areas
- Ararat VPO2: Roadside Vegetation Protection Areas
- Pyrenees VPO1: Roadside Grassland Protection & Conservation
- WMO / BMO
- Pyrenees RO
 - RO11: Greenhill Creek Environs
 - RO13: Evansford & Talbot Reservoir Catchment Environs
 - RO14: Amphitheatre Environs
 - RO17: Lexton Environs
 - RO29: Lamplough & Bet Bet Creek



Character Area 3.4 Ararat Hills

3.4 ARARAT HILLS

This Character Area features dramatic, high ridge landforms, which include One Tree Hill (within the Ararat Regional Park) and Mount Ararat, that rise from the undulating paddocks. Hillslopes are more subdued than the steep rises of the Pyrenees range which are visible on the horizon to the east.

Remnant vegetation is scattered throughout the Character Area but is most prevalent at low points and along creek lines. Built form is generally sited back from the roadside, and Chalicum Hills wind farm is sited to take advantage of the higher ground provided by the hills to the south of Ararat.

Key Features

- Ridge landforms rising from undulating paddocks
- Ararat hills
- State forests
- Remnant vegetation
- Views west towards the Grampians
- Gold mining history
- Chalicum Hills wind farm

Settlements

- Ararat



Ridged landforms rise from undulating paddocks, remnant vegetation nestles within the folding hills.



Built form is sited at the base of hills and set back from the roadside



A visually layered landscape of productive use in the undulating foreground, rising ridges in the midground and views toward the Pyrenees range to the rear

Figure 1 Ararat Hills Overview

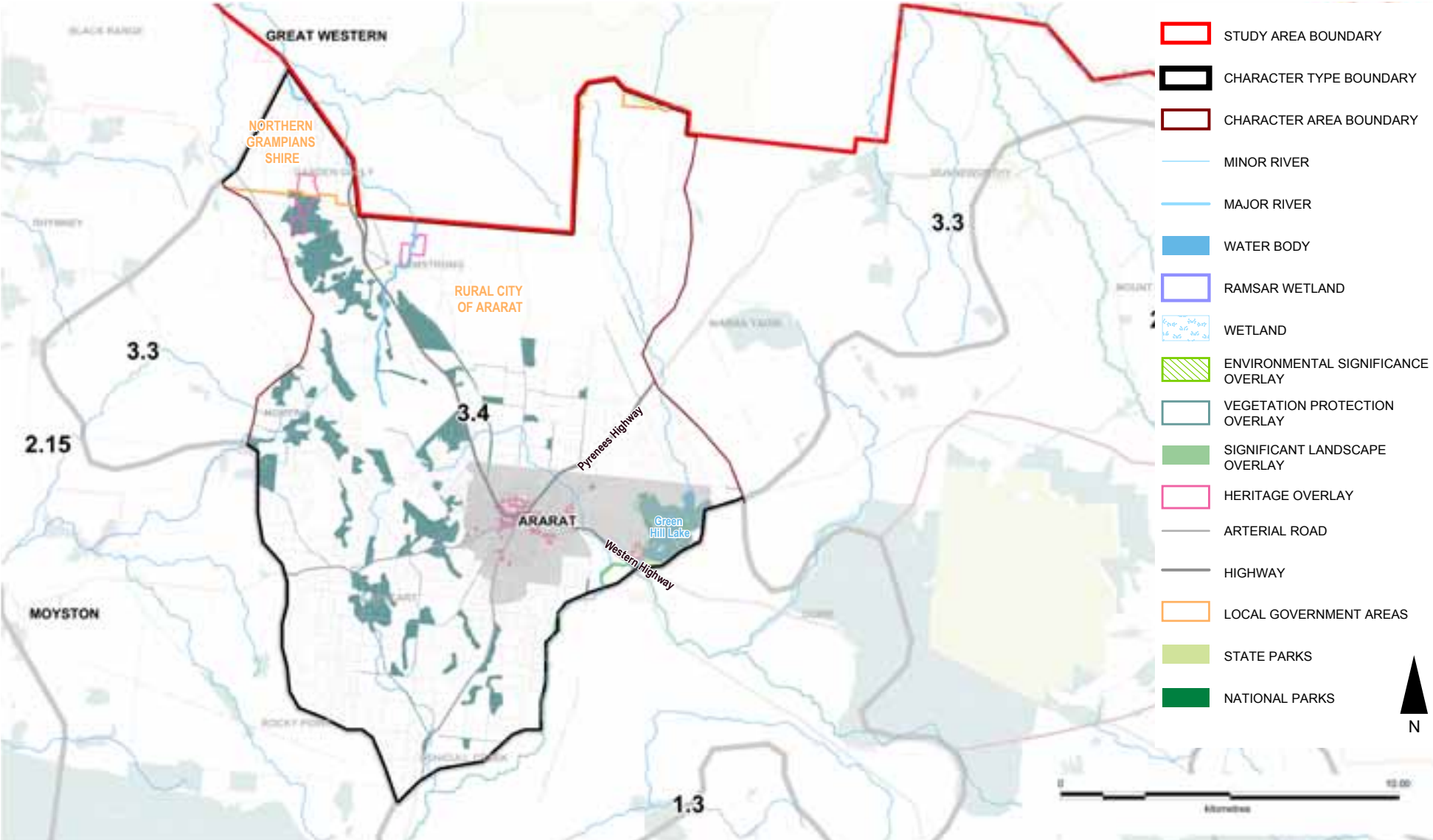


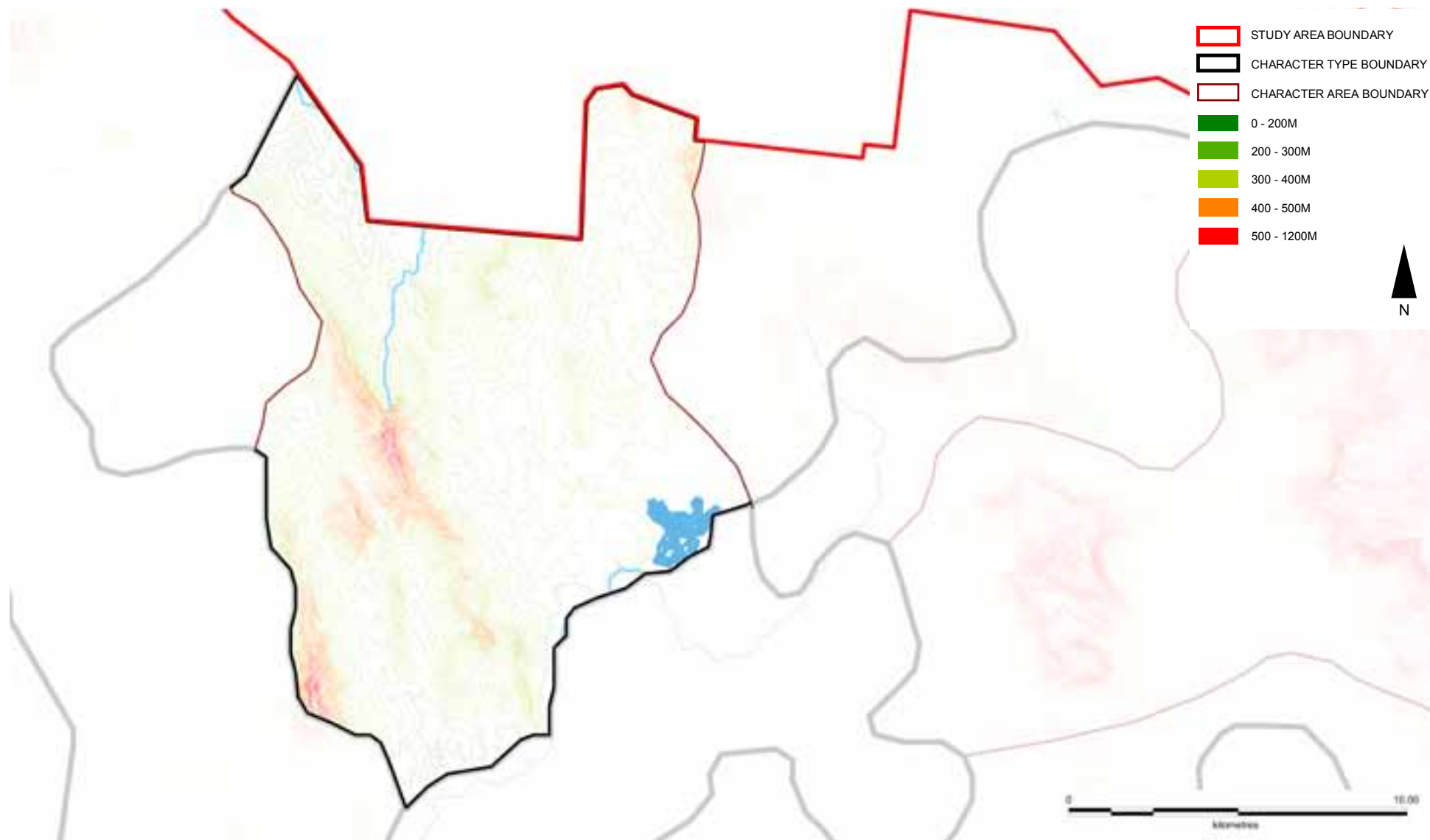
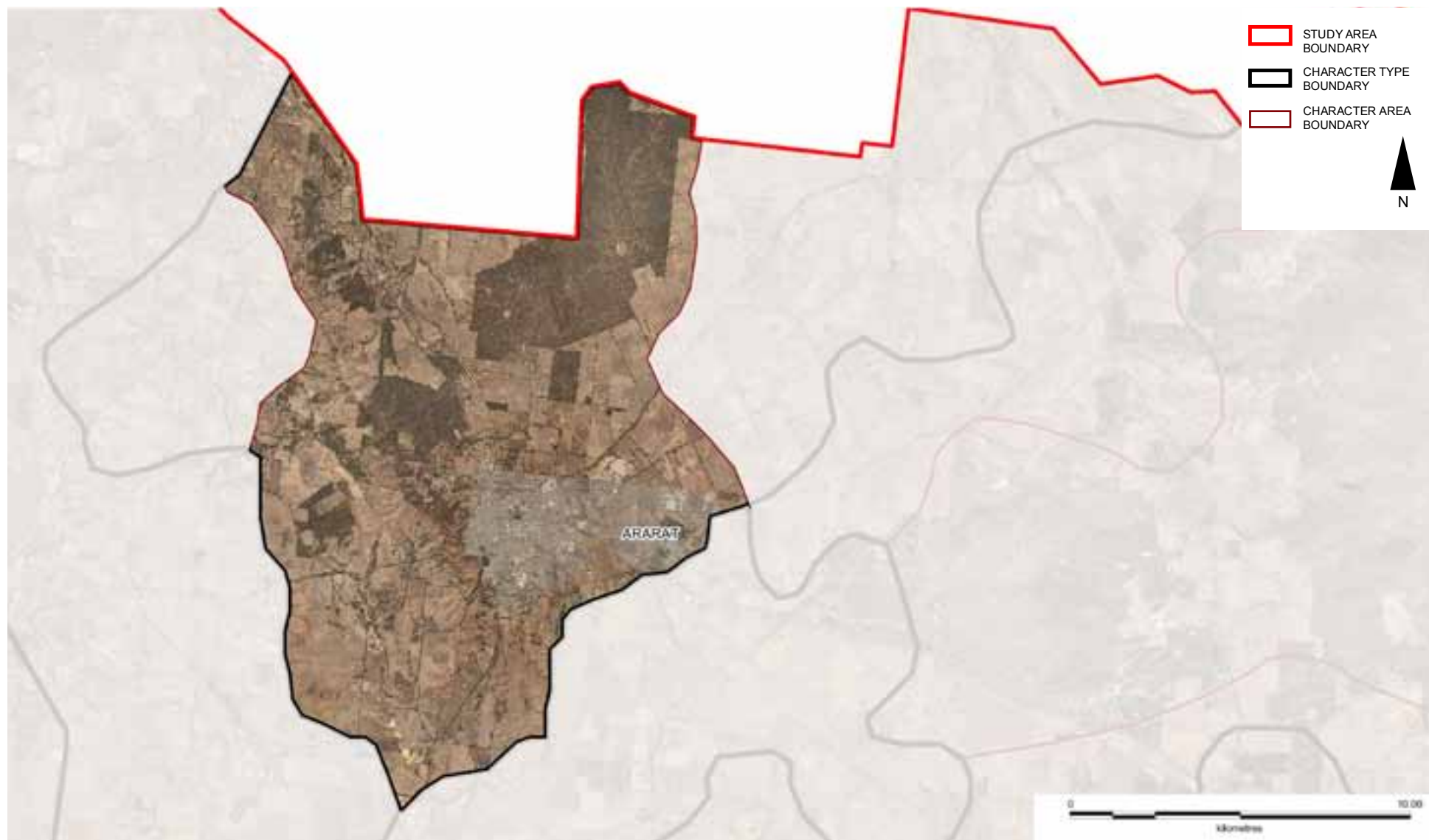
Figure 2 Ararat Hills Landform

Figure 3 Ararat Hills Aerial



PATTERN OF VIEWING

The main viewing corridors for this character areas are:

- The Western Highway
- The Pyrenees Highway
- Ararat - Halls Gap Road
- Mortlake - Ararat Road
- Rhymney Road
- Tatyoon Road

Views in this Character Area are generally medium in range, terminating at the rising landform. Rhymney Road offers good views of the typical topography of this area towards the Ararat Regional Park.

Views from major corridors are generally screened by roadside vegetation.

Pioneer lookout offers panoramic views over the Character Area and towards the Grampians, Mount Langhi Ghiran and Mount Cole.



Looking north on the Western Highway, views are screened by roadside vegetation



Views from within the State Forest are narrow, constrained by tall trees



Looking north on the Ararat to Halls Gap Road, views are narrow as the road cuts through the granitic terrain



Pioneer Lookout on the One Tree Hill Road in the Ararat Hills Regional Park



Looking east from Rhymney Road towards Ararat Hills Park. Built form is generally sited at the base of hillslopes and screened by vegetation. Where built form sits atop ridge lines it becomes more visible in the landscape, altering the natural silhouette.

LANDSCAPE VALUES

Environmental/Scientific

- Significant vegetation, protected by Ararat VPO1 & VPO2, including:
 - Ararat Hills remnant vegetation (Emerald-lip Greenhood, Hairy Tails, Yellow Gum / Red Stringybark Woodland, Yellow Gum Woodland, Yellow Gum Grassy Woodland)
 - Armstrong West remnants (Heathy Woodland, Plains Grassy Woodland)
 - Armstrong South remnants (Red Gum / Yellow Gum Grassy Woodland)
- Locally significant watercourses, waterbodies & wetlands, protected by Ararat ESO2

Social

- Part of the Grampians winery region, a tourist attraction

LANDSCAPE PROTECTION & MANAGEMENT

Planning Scheme Policies & Controls

This Character Area is subject to the Ararat and Northern Grampians Planning Schemes.

Key Zones

- FZ
- PCRZ (Ararat only)
- RLZ at Ararat, Great Western

Key Overlays

- Ararat ESO2: Watercourses, Waterbody & Wetland Protection Areas
- Ararat HO71, HO72, HO112, HO113, HO114
- Northern Grampians HO7
- Ararat VPO1: Significant & Remnant Vegetation Areas
- Ararat VPO2: Roadside Vegetation Protection Areas
- Ararat WMO / BMO

