

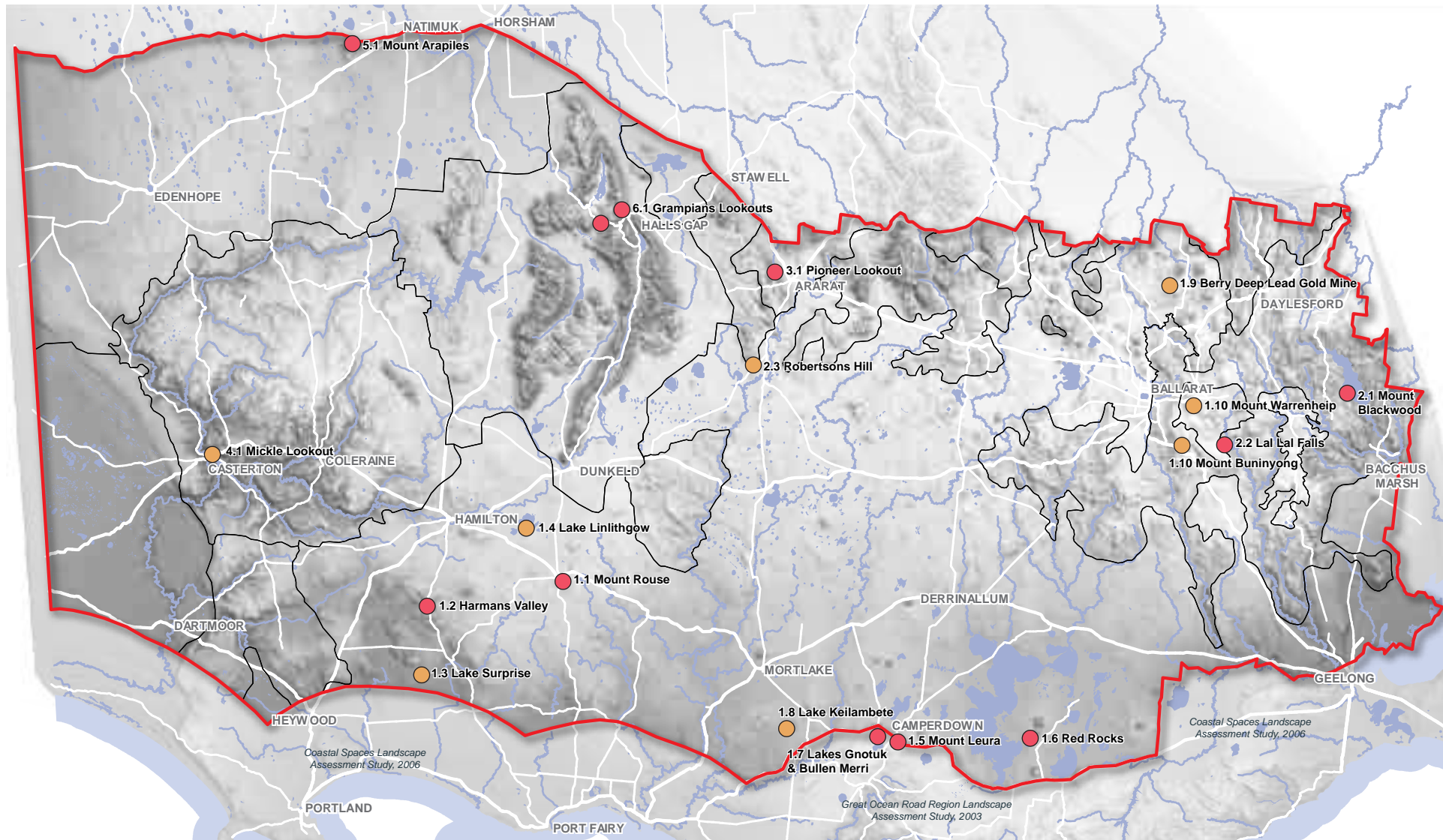


# SOUTH WEST VICTORIA LANDSCAPE ASSESSMENT STUDY

## Significant Views of South West Victoria

June 2013

# Significant Views of South West Victoria



# Significant Views of South West Victoria

## 1. WESTERN VOLCANIC PLAIN

1.1	Mount Rouse	State
1.2	Harmans Valley	State
1.3	Lake Surprise	Regional
1.4	Lake Linlithgow	Regional
1.5	Mount Leura	State
1.6	Red Rocks	State
1.7	Lakes Gnotuk & Bullen Merri	State
1.8	Lake Keilambete	Regional
1.9	Berry Deep Lead Gold Mine Views	Regional
1.10	Mount Buninyong & Mount Warrenheip	Regional

## 2. THE UPLANDS

2.1	Mount Blackwood	State
2.2	Lal Lal Falls	State
2.3	Robertsons Hill	Regional

## 3. THE GOLDFIELDS

3.1	Pioneer Lookout (One Tree Hill)	State
-----	---------------------------------	-------

## 4. THE ROLLING TABLELANDS

4.1	Mickle Lookout, Casterton	Regional
-----	---------------------------	----------

## 5. THE WIMMERA PLAINS

5.1	Mount Arapiles	State
-----	----------------	-------

## 6. THE GRAMPIANS (GARIWERD) & SURROUNDS

6.1	Grampians Lookouts	State
-----	--------------------	-------

## 7. VEGETATED RISES

(No State or Regionally Significant Views identified)

## 8. THE GLENELG PLAIN

(No State or Regionally Significant Views identified)







# 1.1 MOUNT ROUSE

## Significant Viewing Location

Character Type	3	Western Volcanic Plains
	1.3	Volcanic Agricultural
	1.4	Stony Rises & Lava Flows
Character Areas visible in view	4.1	Eastern Tablelands
	1.10	Partially Wooded Agricultural
	6.2	Grampians Surrounds

A road up Mount Rouse and a short climb rewards viewers with a sweeping panoramic views. The view cone on the viewshed map opposite describes the extent of the view as seen from the western side of the summit, as views to the east are blocked by vegetation.

## Overall View Significance Rating: State



View towards the Grampians Ranges over the town of Peshurst

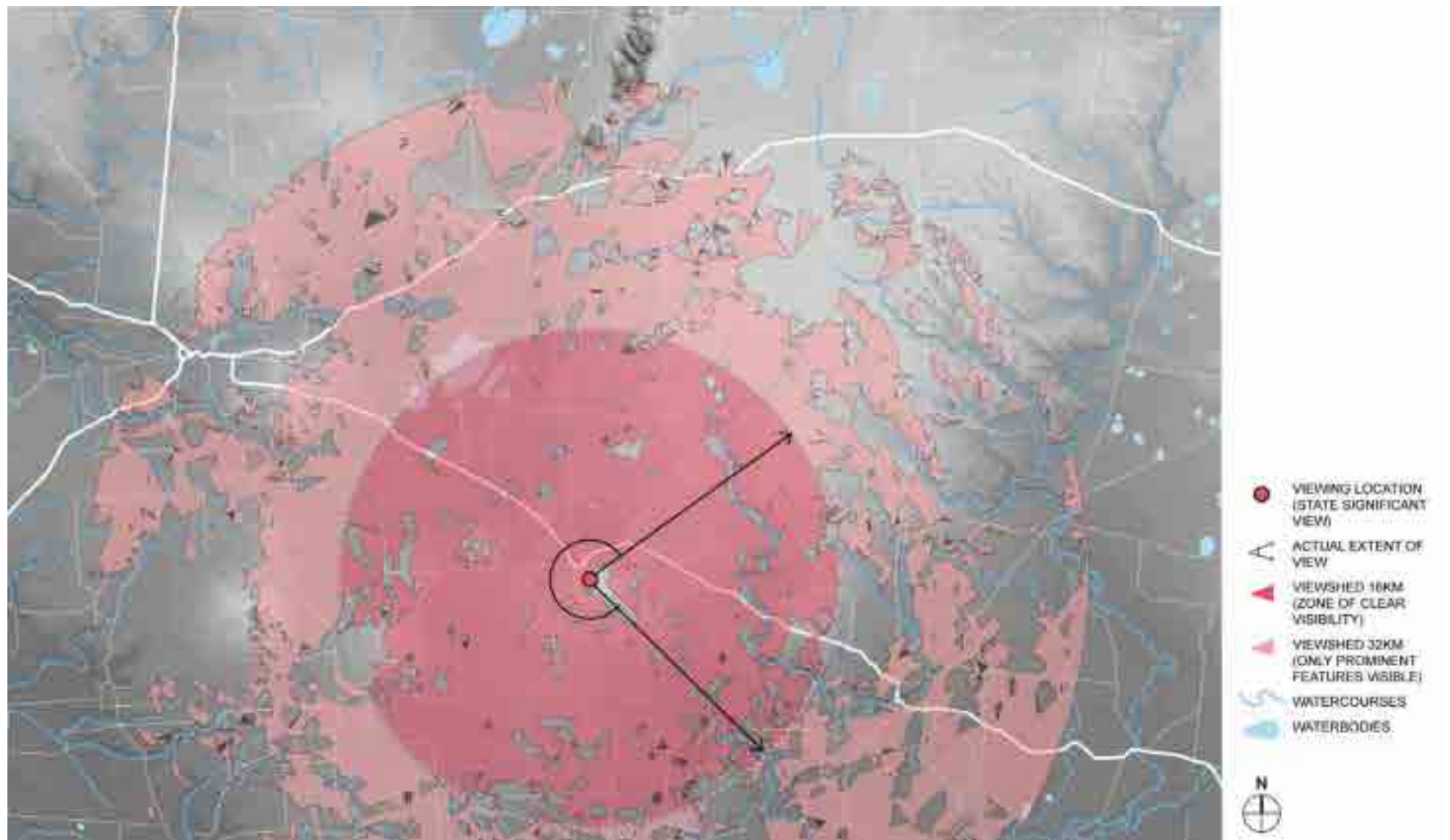


View to the east from Mount Rouse that is screened by vegetation



Wide views to the south display the textured landscape of stony rises from the Mount Rouse lava flow

## Viewshed Map: Mount Rouse



## Aesthetic Values

AESTHETIC VALUES				
	Source	Description	Aesthetic Values Rating Considerations (i.e. exemplary, iconic, scarce)	Level of Significance
COMPOSITION (STRUCTURE)	Survey	The Mount Rouse Lookout provides almost 360° 'picture postcard' panoramic views across the lava plain and surrounding district. These are available from a number of locations on the summit. The Grampians Ranges rise up from the horizon in the north, which provides a visual balance between foreground and background elements. Views terminate at the jagged peaks of the Ranges on the horizon which provide a strong visual contrast with the surrounding flat pastoral landscape.	This view provides an exemplary outlook over the surrounding landscape.	Exceptional (State)
COMPOSITION (VISUAL QUALITIES)	Survey	Views from the summit of Mount Rouse are panoramic, with the foreground and middle ground stretching out across the lava plain towards a backdrop of the Grampians. Paddocks are criss-crossed with dark green shelterbelts and the nearby volcanic rises of Mount Napier and Mount Eccles (Budj Bim) can be seen. It is also possible to view the extent of the rocky lava flow as it makes its way south, creating a rough, lumpy texture across the agricultural field patterns.	Mount Rouse is easily accessible and provides 360° degree views across the surrounding region.	Exceptional (State)
Overall Aesthetic Significance Rating				State



## Other Cultural Landscape Values

OTHER VALUES		
	Source	Description
SOCIAL VALUE	Tourist information	The Mount Rouse Lookout is extensively promoted through tourist information and is clearly signposted. The Mount Rouse Lookout provides the first clear views of the Grampians for tourists travelling from the south.
ENVIRONMENTAL VALUE	Survey	The lookout is an important opportunity to understand the environment and volcanic origins of the region.
CULTURAL VALUES SIGNIFICANCE RATING		State

# 1.2 HARMANS VALLEY LOOKOUT

## Significant Viewing Location

Character Type	1	Western Volcanic Plain
Character Area visible in this view	1.4	Stony Rises & Lava Flows

This viewing location overlooks the Harmans Valley Lava Flow and includes designated viewing infrastructure and interpretive information. It is situated near the junction of Harmans Road (which runs through the Mount Napier State Park) and the Port Fairy - Hamilton Road.

The viewshed map opposite illustrates how the view is contained within the sweeping curve of the valley, with Mount Napier visible in the background. While other parts of the surrounding landscape are visible, the view cone describes the extent of the view that is dominated by the lava flow.

## Overall View Significance Rating: State

A detailed significance assessment is provided over the following pages.



*The classic cone formation of Mount Napier is a stand out feature on the horizon in this view*

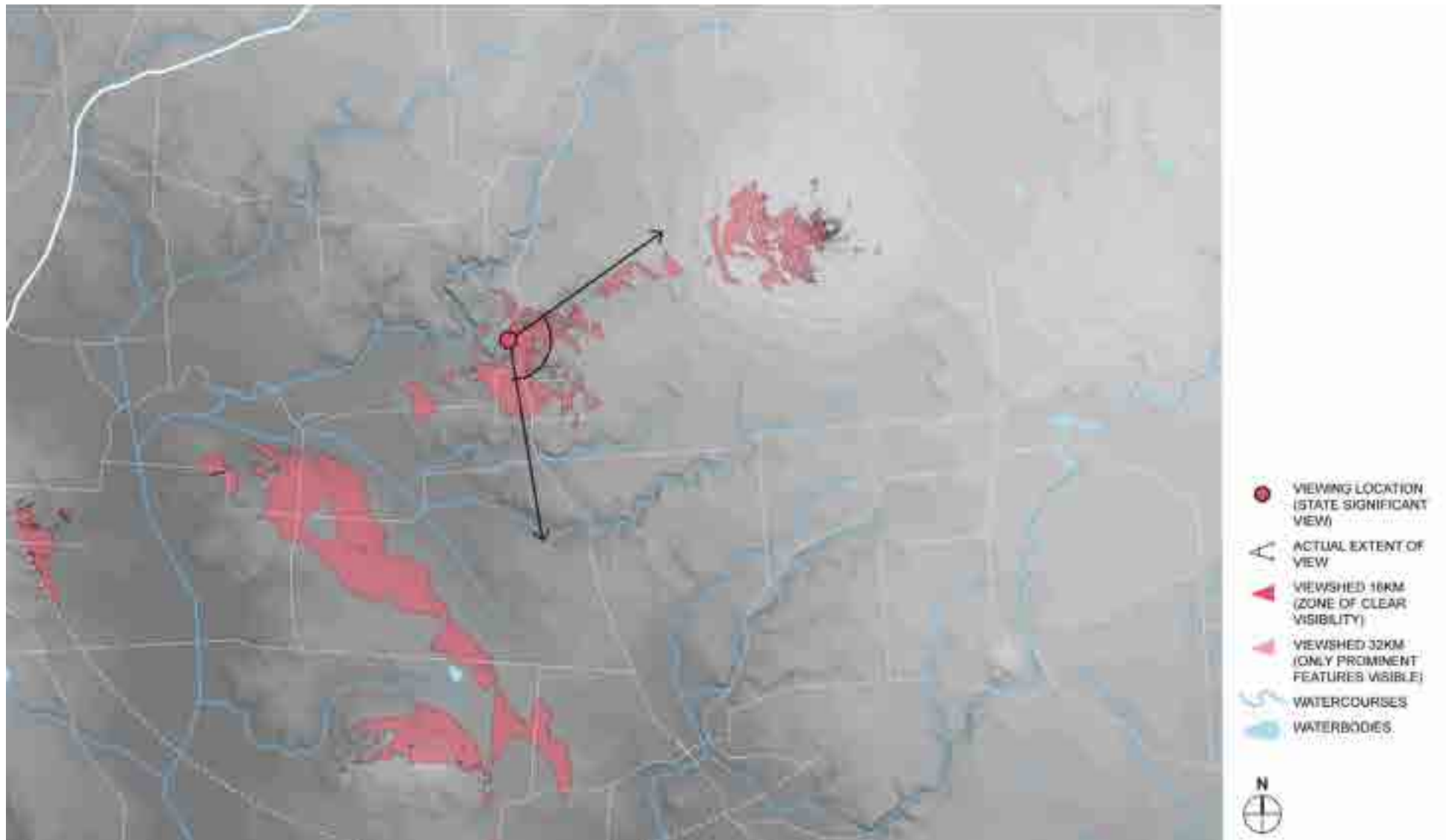


*Rough textures of the lava flow*



*View over Harmans Valley Lava Flow*

## Viewshed Map: Harmans Valley Lookout



## Aesthetic Values

AESTHETIC VALUES				
	Source	Description	Aesthetic Values Rating Considerations (i.e. exemplary, iconic, scarce)	Level of Significance
COMPOSITION (STRUCTURE)	Survey	This view provides a sweeping, though relatively short range, panorama over Harmans Valley and the lava flow contained within it, which is considered a nationally significant volcanic feature. A grassy foreground drops down towards the surface of the lava flow, which bends across the middle-ground of the view. The eye is drawn up in the direction of the flow to the perfect formation of the cone of Mount Napier on the horizon, the source of the lava, which provides a central focus point in the view.	This is an exceptionally balanced view, with the eye drawn across the landscape to a series of significant features.	Exceptional (State)
COMPOSITION (VISUAL QUALITIES)	Survey	The open, cleared foreground and elevated position of the viewing location allows for excellent, uninterrupted views over the lava flow. There is a high contrast between the rough texture of the flow and the dark, scrubby bracken growing in its crevices, and the smooth, grassy slopes of the valley walls. The lava flow is a dramatic visual feature that twists across the middle ground. The central location of Mount Napier and the span of the landscape between it and the viewing location makes it easy to appreciate the distance that the boiling river of lava travelled when the volcano was active. This is further highlighted by dark vegetation that frames the valley and directs the eye across the volcanic features.	This view is the best available over any of the lava flows in Western Victoria.	Exceptional (State)
Overall Aesthetic Significance Rating				State

## Other Cultural Landscape Values

OTHER VALUES		
	Source	Description
SOCIAL VALUE	Desktop Research	<p>The lava flow is promoted through tourism brochures for the area and is highlighted as a significant part of the Kanawinka Global Geopark.</p> <p>Harmans Valley lookout is the main viewing point of this phenomenal landscape and a tourist attraction for the local area, and the region.</p>
ENVIRONMENTAL/ SCIENTIFIC VALUE	Desktop Research	The viewing point reveals the complex nature of this landscape and how it has been formed through volcanic activity
CULTURAL VALUES SIGNIFICANCE RATING		State (or higher)