

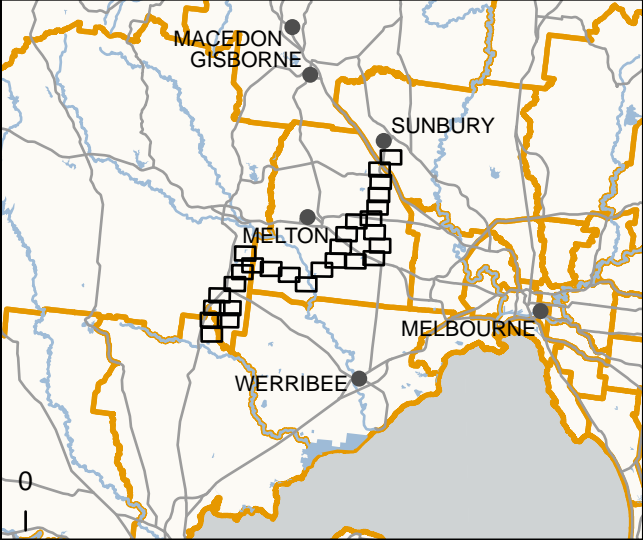


- Legend
- S2M Interconnector - Shared alignment
 - S2M Interconnector Indicative Assessment Area (Option A)
 - S2M Interconnector Indicative Assessment Area (Option B)
 - Areas of Cultural Heritage Sensitivity
 - Western Water Recycled Water Plants



DATA SOURCES
© Commonwealth of Australia (Geoscience Australia) 2006 Geodata Topo 250k Series 3; Vicmap Data © State of Victoria 2021; CH2M Beca 2021. Aerometrex Metromap 2021; ESRI Basemap 2021

COPYRIGHT: The concepts and information contained in this document are the copyright of Jacobs. Use or copying of the document in whole or in part without the written permission of Jacobs constitutes an infringement of copyright. Jacobs does not warrant that this document is definitive nor free of error and does not accept liability for any loss caused or arising from reliance upon information provided herein.





Legend

- M2BM Interconnector Construction Area
- RAP boundary
- Areas of Cultural Heritage Sensitivity
- Western Water Recycled Water Plants

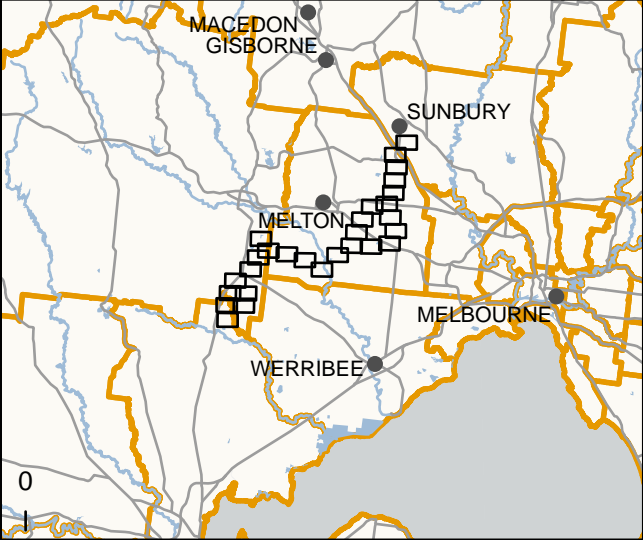
IS305300

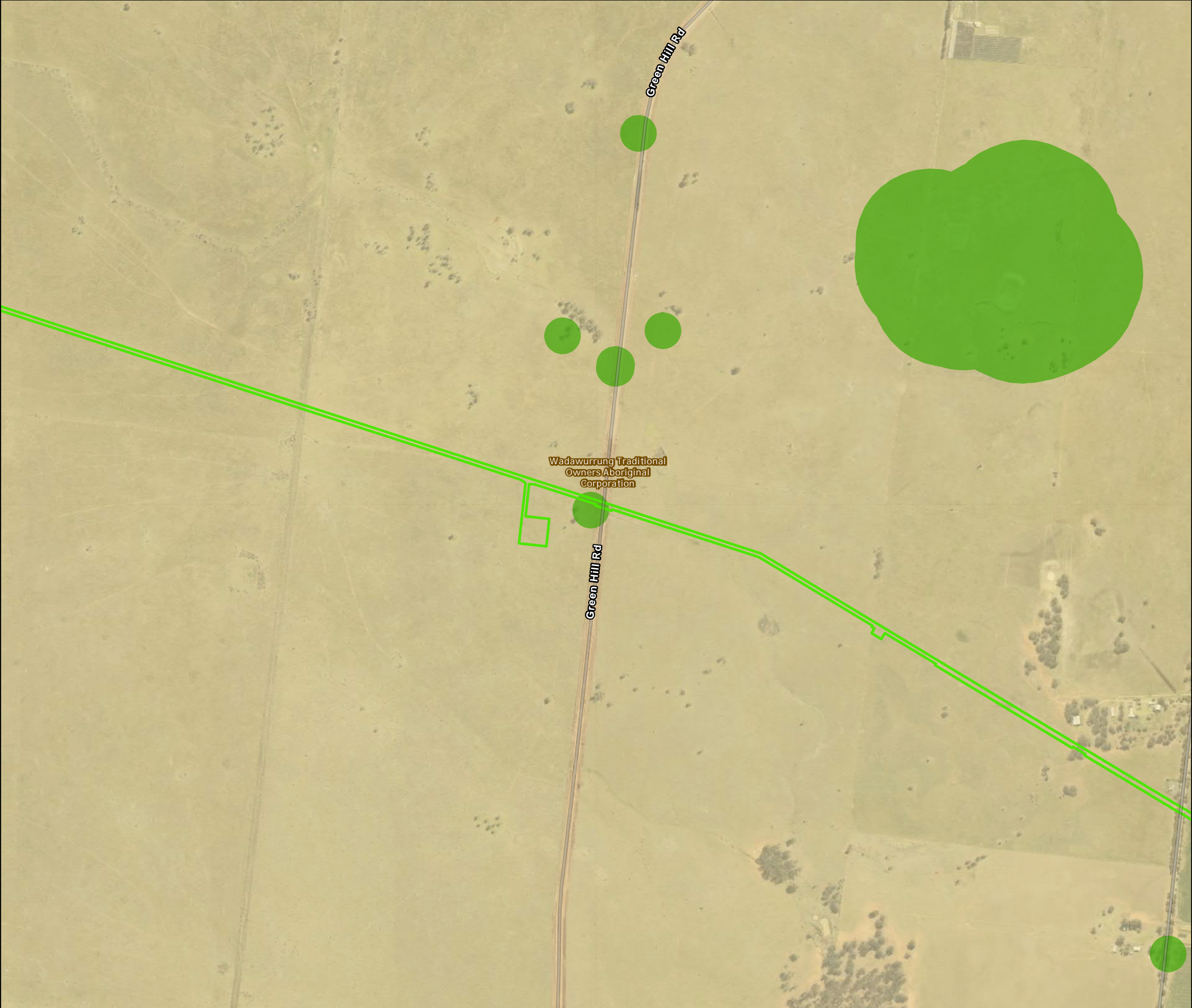
0 250 500

Metres

DATA SOURCES
© Commonwealth of Australia (Geoscience Australia) 2006 Geodata Topo 250k Series 3; Vicmap Data © State of Victoria 2021; CH2M Beca 2021. Aerometrex Metromap 2021; ESRI Basemap 2021

COPYRIGHT: The concepts and information contained in this document are the copyright of Jacobs. Use or copying of the document in whole or in part without the written permission of Jacobs constitutes an infringement of copyright. Jacobs does not warrant that this document is definitive nor free of error and does not accept liability for any loss caused or arising from reliance upon information provided herein.





Legend

- M2BM Interconnector Construction Area
- RAP boundary
- Areas of Cultural Heritage Sensitivity

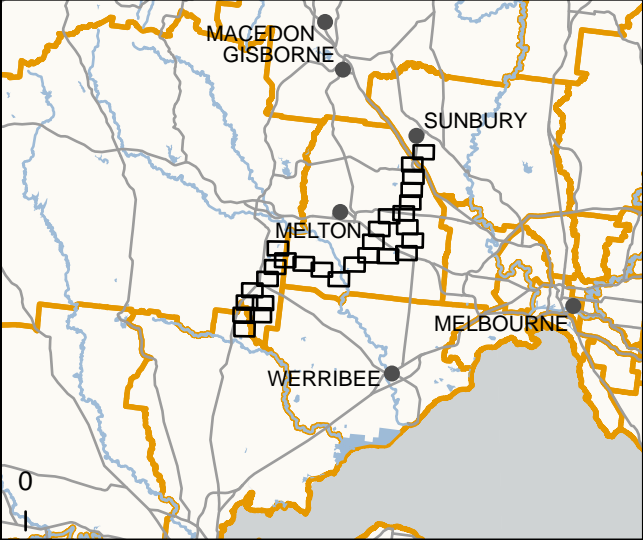
IS305300

0 250 500

Metres

DATA SOURCES
© Commonwealth of Australia (Geoscience Australia) 2006 Geodata Topo 250k Series 3; Vicmap Data © State of Victoria 2021; CH2M Beca 2021. Aerometrex Metromap 2021; ESRI Basemap 2021

COPYRIGHT: The concepts and information contained in this document are the copyright of Jacobs. Use or copying of the document in whole or in part without the written permission of Jacobs constitutes an infringement of copyright. Jacobs does not warrant that this document is definitive nor free of error and does not accept liability for any loss caused or arising from reliance upon information provided herein.





Legend

- M2BM Interconnector Construction Area
- RAP boundary

0 250 500

Metres

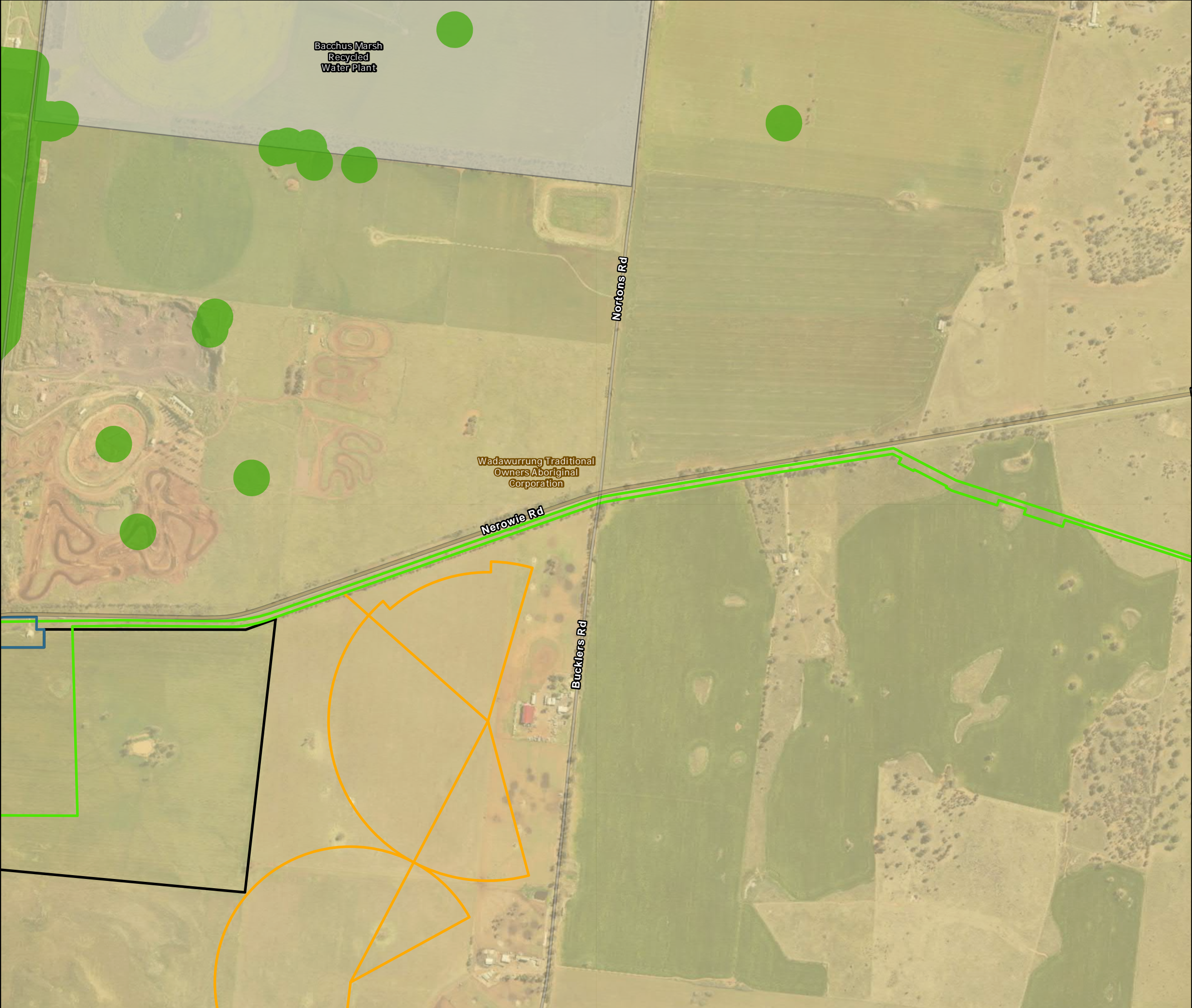
IS305300

DATA SOURCES

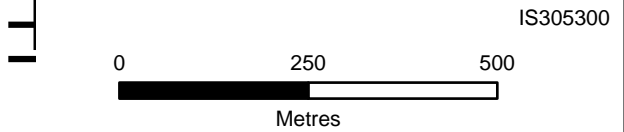
© Commonwealth of Australia (Geoscience Australia) 2006 Geodata Topo 250k Series 3; Vicmap Data © State of Victoria 2021; CH2M Beca 2021. Aerometrex Metromap 2021; ESRI Basemap 2021

COPYRIGHT: The concepts and information contained in this document are the copyright of Jacobs. Use or copying of the document in whole or in part without the written permission of Jacobs constitutes an infringement of copyright. Jacobs does not warrant that this document is definitive nor free of error and does not accept liability for any loss caused or arising from reliance upon information provided herein.

Inset map showing the location of the study area within the Melbourne region. The map includes labels for Macedon, Gisborne, Sunbury, Melton, Melbourne, and Werribee. The study area is highlighted with a green line.

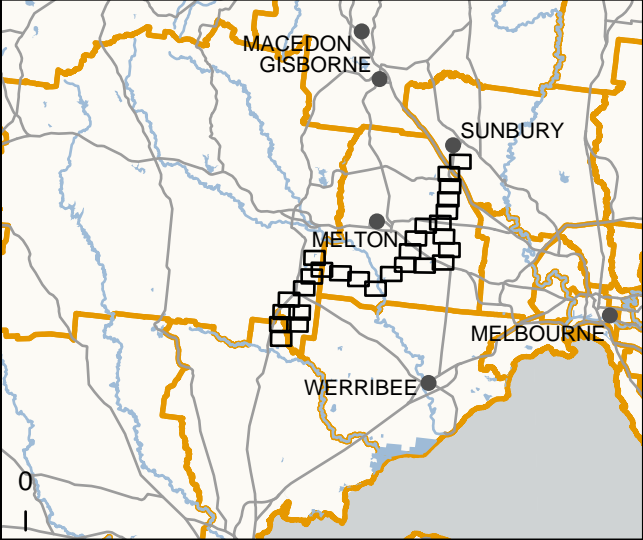


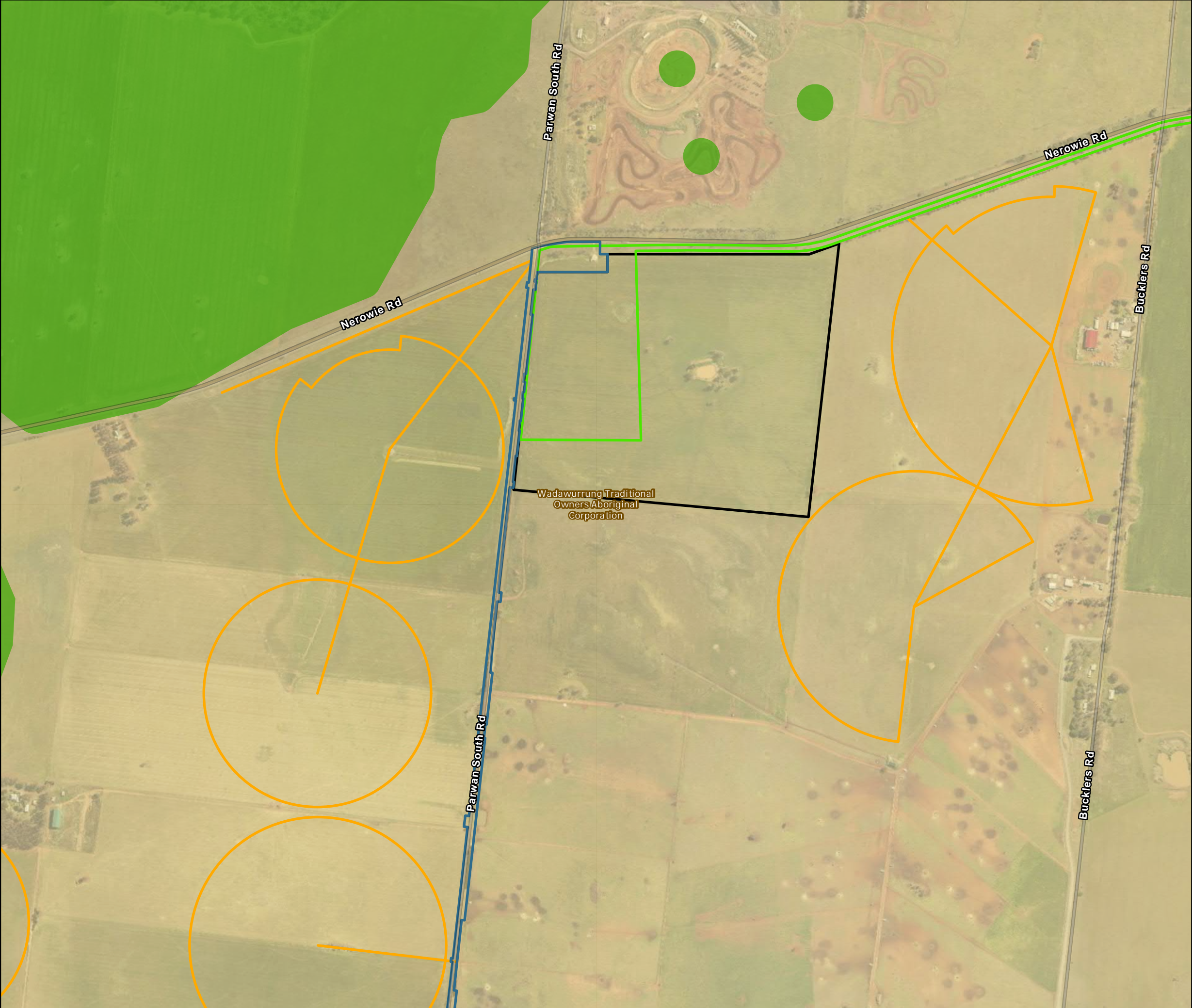
- Legend
- PBID Supply Network Construction Area
 - M2BM Interconnector Construction Area
 - PBID Foundation Recycled Water Irrigation Areas
 - RAP boundary
 - Areas of Cultural Heritage Sensitivity
 - Parwan Recycled Water Storage Assessment Area
 - Western Water Recycled Water Plants



DATA SOURCES
© Commonwealth of Australia (Geoscience Australia) 2006 Geodata Topo 250k Series 3; Vicmap Data © State of Victoria 2021; CH2M Beca 2021. Aerometrex Metromap 2021; ESRI Basemap 2021

COPYRIGHT: The concepts and information contained in this document are the copyright of Jacobs. Use or copying of the document in whole or in part without the written permission of Jacobs constitutes an infringement of copyright. Jacobs does not warrant that this document is definitive nor free of error and does not accept liability for any loss caused or arising from reliance upon information provided herein.





Legend

- PBID Supply Network Construction Area
- M2BM Interconnector Construction Area
- PBID Foundation Recycled Water Irrigation Areas
- RAP boundary
- Areas of Cultural Heritage Sensitivity
- Parwan Recycled Water Storage Assessment Area

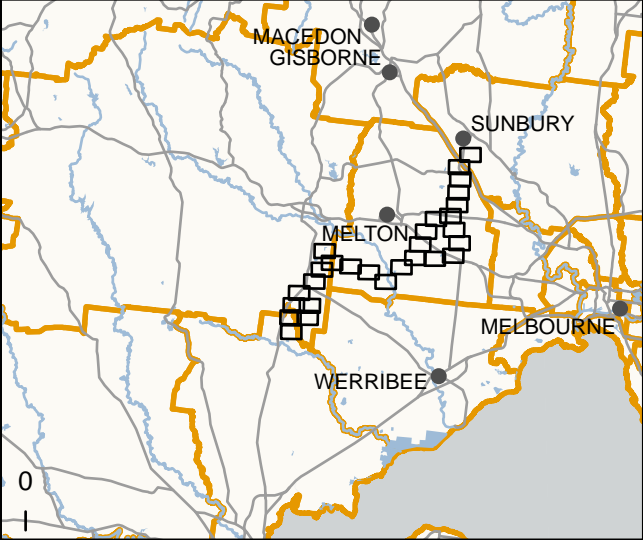
IS305300

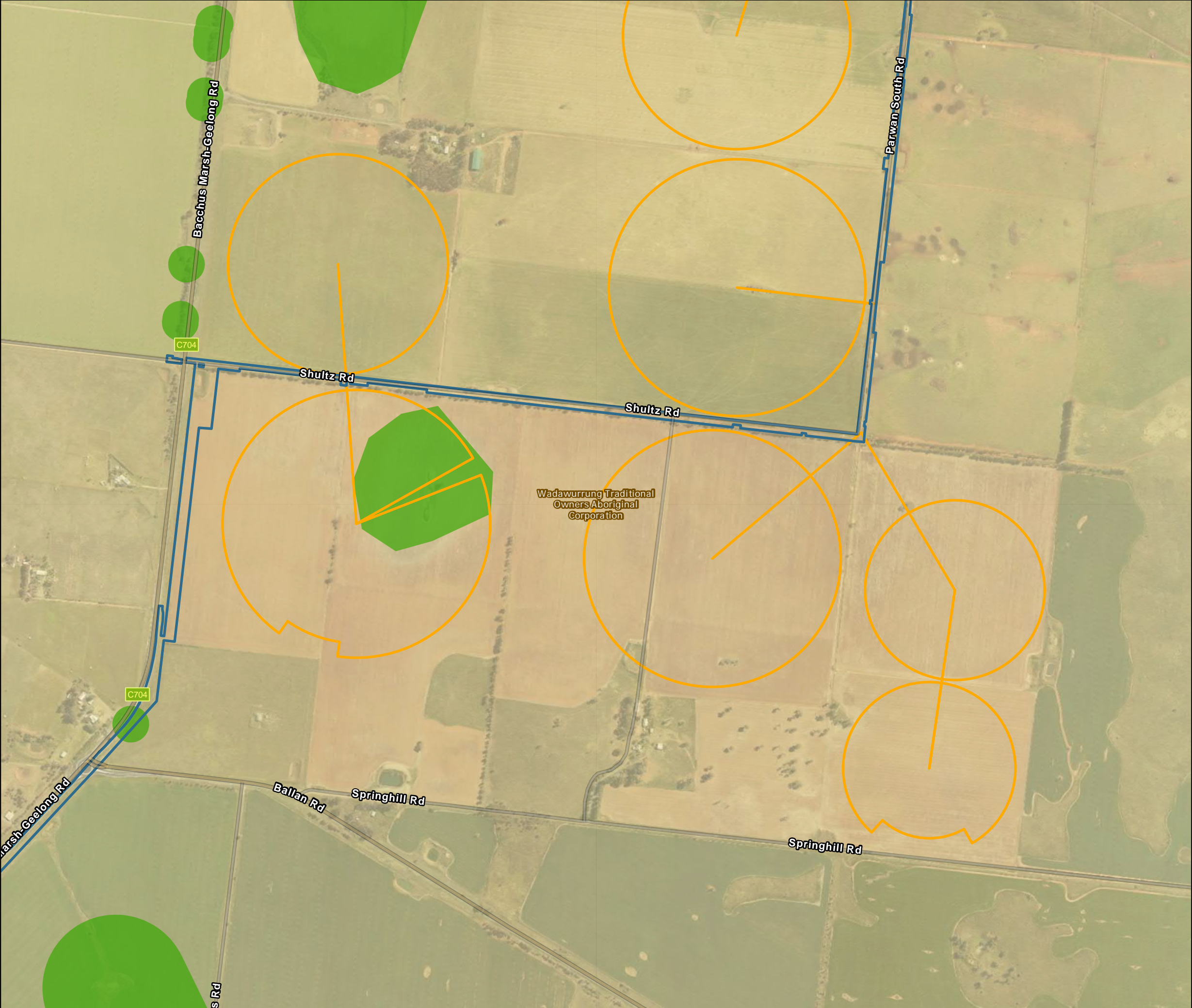
0 250 500

Metres

DATA SOURCES
© Commonwealth of Australia (Geoscience Australia) 2006 Geodata Topo 250k Series 3; Vicmap Data © State of Victoria 2021; CH2M Beca 2021. Aerometrex Metromap 2021; ESRI Basemap 2021

COPYRIGHT: The concepts and information contained in this document are the copyright of Jacobs. Use or copying of the document in whole or in part without the written permission of Jacobs constitutes an infringement of copyright. Jacobs does not warrant that this document is definitive nor free of error and does not accept liability for any loss caused or arising from reliance upon information provided herein.





Legend

- PBID Supply Network Construction Area
- PBID Foundation Recycled Water Irrigation Areas
- RAP boundary
- Areas of Cultural Heritage Sensitivity

IS305300

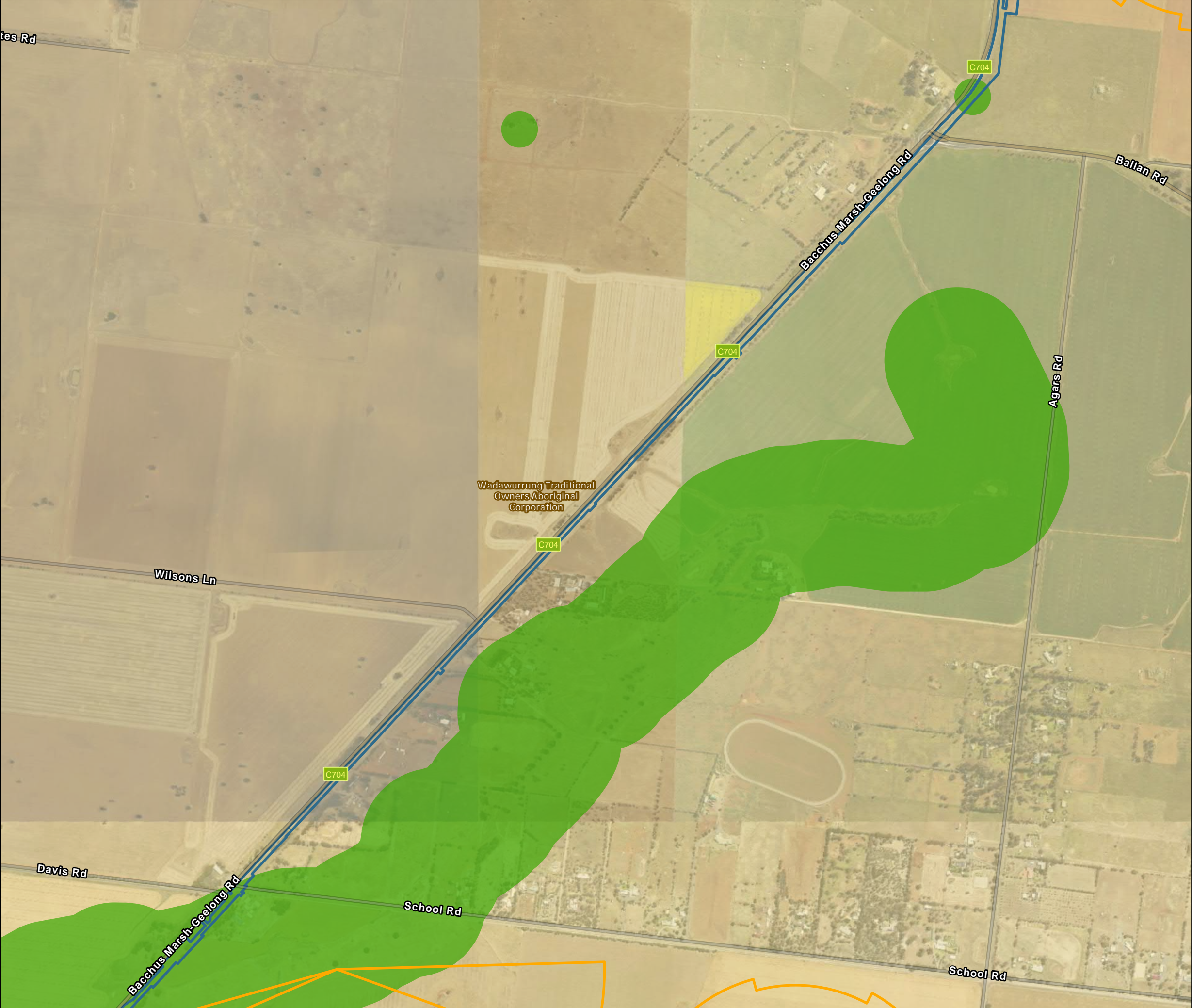
0 250 500

Metres

DATA SOURCES
© Commonwealth of Australia (Geoscience Australia) 2006 Geodata Topo 250k Series 3; Vicmap Data © State of Victoria 2021; CH2M Beca 2021. Aerometrex Metromap 2021; ESRI Basemap 2021

COPYRIGHT: The concepts and information contained in this document are the copyright of Jacobs. Use or copying of the document in whole or in part without the written permission of Jacobs constitutes an infringement of copyright. Jacobs does not warrant that this document is definitive nor free of error and does not accept liability for any loss caused or arising from reliance upon information provided herein.





Legend

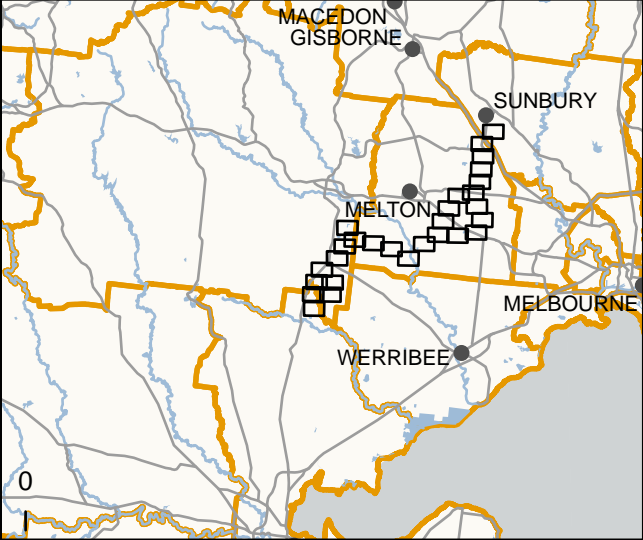
- PBID Supply Network Construction Area
- PBID Foundation Recycled Water Irrigation Areas
- RAP boundary
- Areas of Cultural Heritage Sensitivity

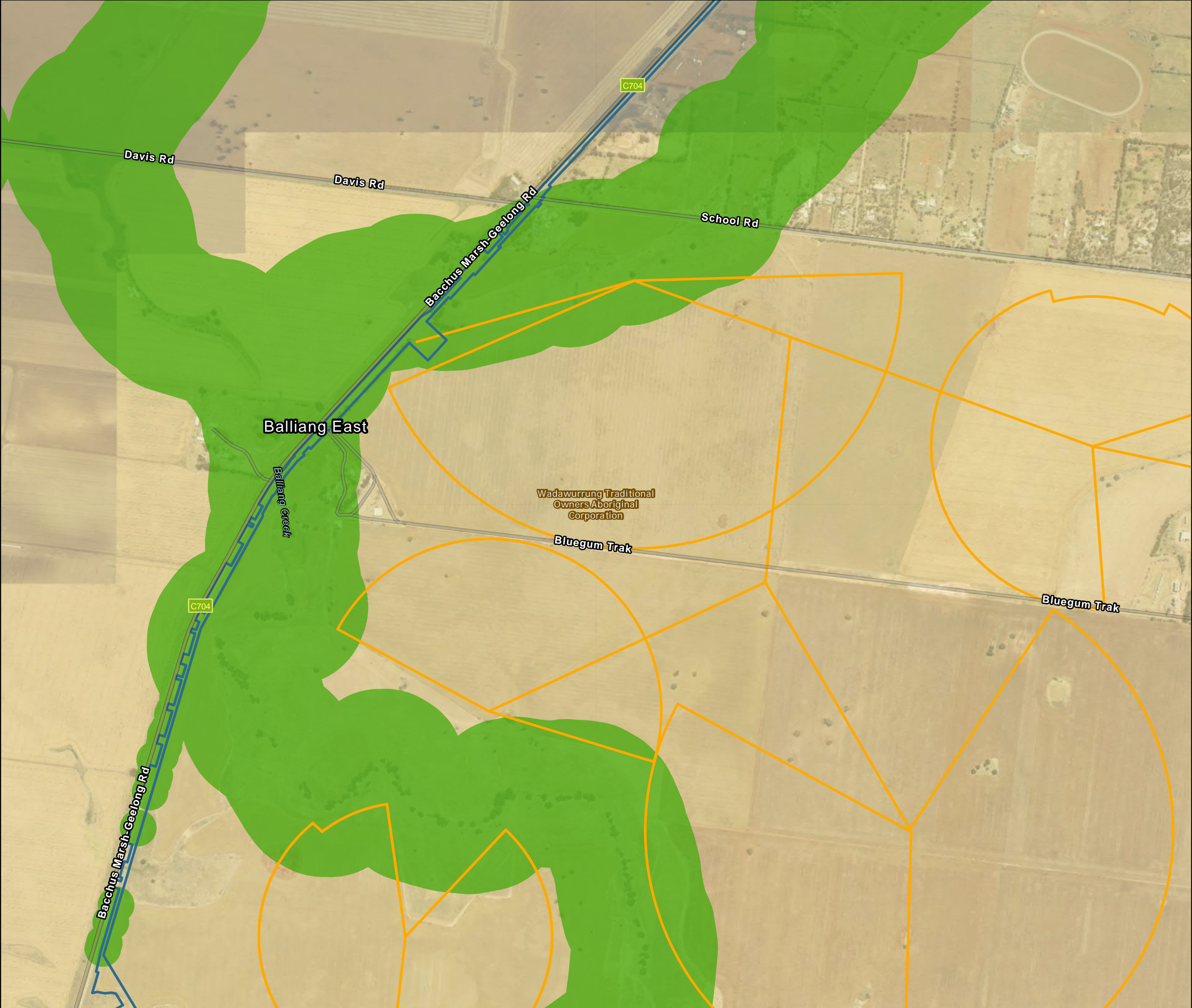
0 250 500
Metres

IS305300

DATA SOURCES
© Commonwealth of Australia (Geoscience Australia) 2006 Geodata Topo 250k Series 3; Vicmap Data © State of Victoria 2021; CH2M Beca 2021. Aerometrex Metromap 2021; ESRI Basemap 2021

COPYRIGHT: The concepts and information contained in this document are the copyright of Jacobs. Use or copying of the document in whole or in part without the written permission of Jacobs constitutes an infringement of copyright. Jacobs does not warrant that this document is definitive nor free of error and does not accept liability for any loss caused or arising from reliance upon information provided herein.



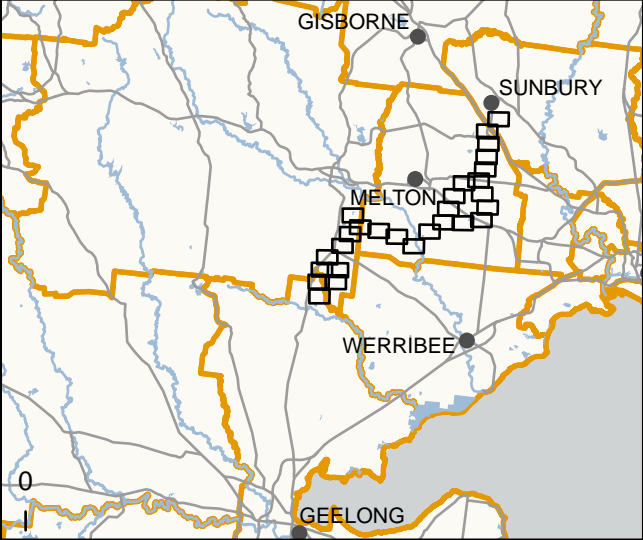


- Legend
- PBID Supply Network Construction Area
 - PBID Foundation Recycled Water Irrigation Areas
 - RAP boundary
 - Areas of Cultural Heritage Sensitivity



DATA SOURCES
© Commonwealth of Australia (Geoscience Australia) 2006 Geodata Topo 250k Series 3; Vicmap Data © State of Victoria 2021; CH2M Beca 2021. Aerometrex Metromap 2021; ESRI Basemap 2021

COPYRIGHT: The concepts and information contained in this document are the copyright of Jacobs. Use or copying of the document in whole or in part without the written permission of Jacobs constitutes an infringement of copyright. Jacobs does not warrant that this document is definitive nor free of error and does not accept liability for any loss caused or arising from reliance upon information provided herein.





Legend

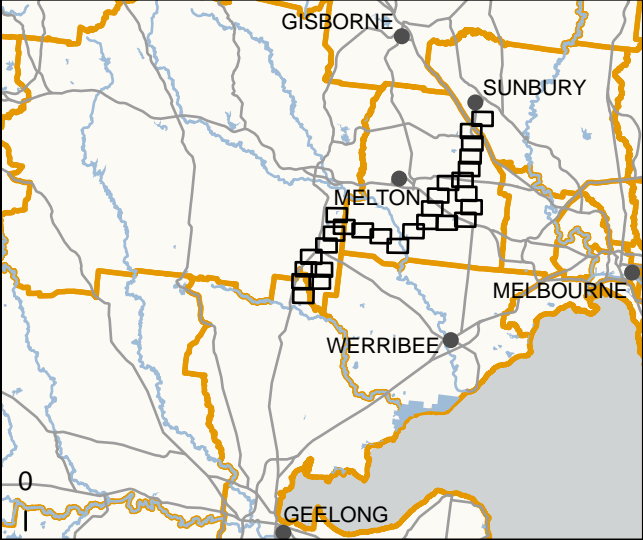
- PBID Foundation Recycled Water Irrigation Areas
- RAP boundary
- Areas of Cultural Heritage Sensitivity

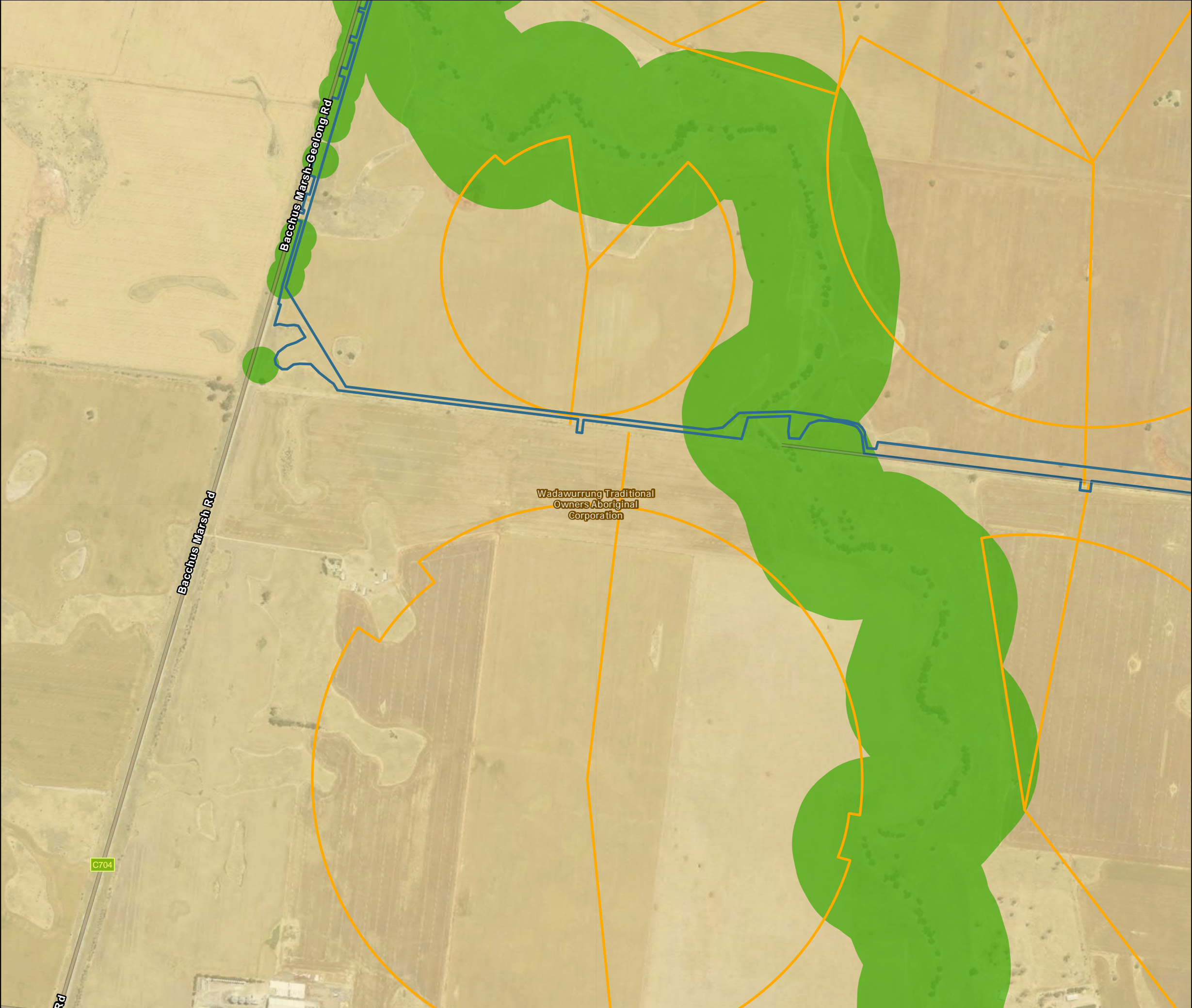
Scale bar: 0, 250, 500 Metres

IS305300

DATA SOURCES
© Commonwealth of Australia (Geoscience Australia) 2006 Geodata Topo 250k Series 3; Vicmap Data © State of Victoria 2021; CH2M Beca 2021. Aerometrex Metromap 2021; ESRI Basemap 2021

COPYRIGHT: The concepts and information contained in this document are the copyright of Jacobs. Use or copying of the document in whole or in part without the written permission of Jacobs constitutes an infringement of copyright. Jacobs does not warrant that this document is definitive nor free of error and does not accept liability for any loss caused or arising from reliance upon information provided herein.





Legend

- PBID Supply Network Construction Area
- PBID Foundation Recycled Water Irrigation Areas
- RAP boundary
- Areas of Cultural Heritage Sensitivity

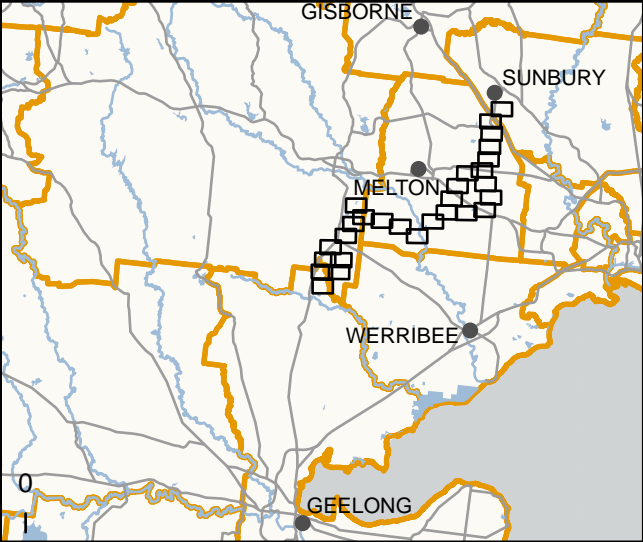
IS305300

0 250 500

Metres

DATA SOURCES
© Commonwealth of Australia (Geoscience Australia) 2006 Geodata Topo 250k Series 3; Vicmap Data © State of Victoria 2021; CH2M Beca 2021. Aerometrex Metromap 2021; ESRI Basemap 2021

COPYRIGHT: The concepts and information contained in this document are the copyright of Jacobs. Use or copying of the document in whole or in part without the written permission of Jacobs constitutes an infringement of copyright. Jacobs does not warrant that this document is definitive nor free of error and does not accept liability for any loss caused or arising from reliance upon information provided herein.





Legend

- PBID Supply Network Construction Area
- PBID Foundation Recycled Water Irrigation Areas
- RAP boundary
- Areas of Cultural Heritage Sensitivity

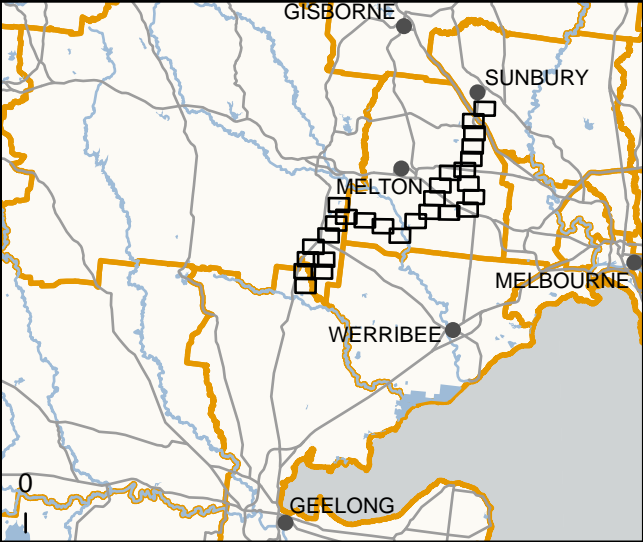
IS305300

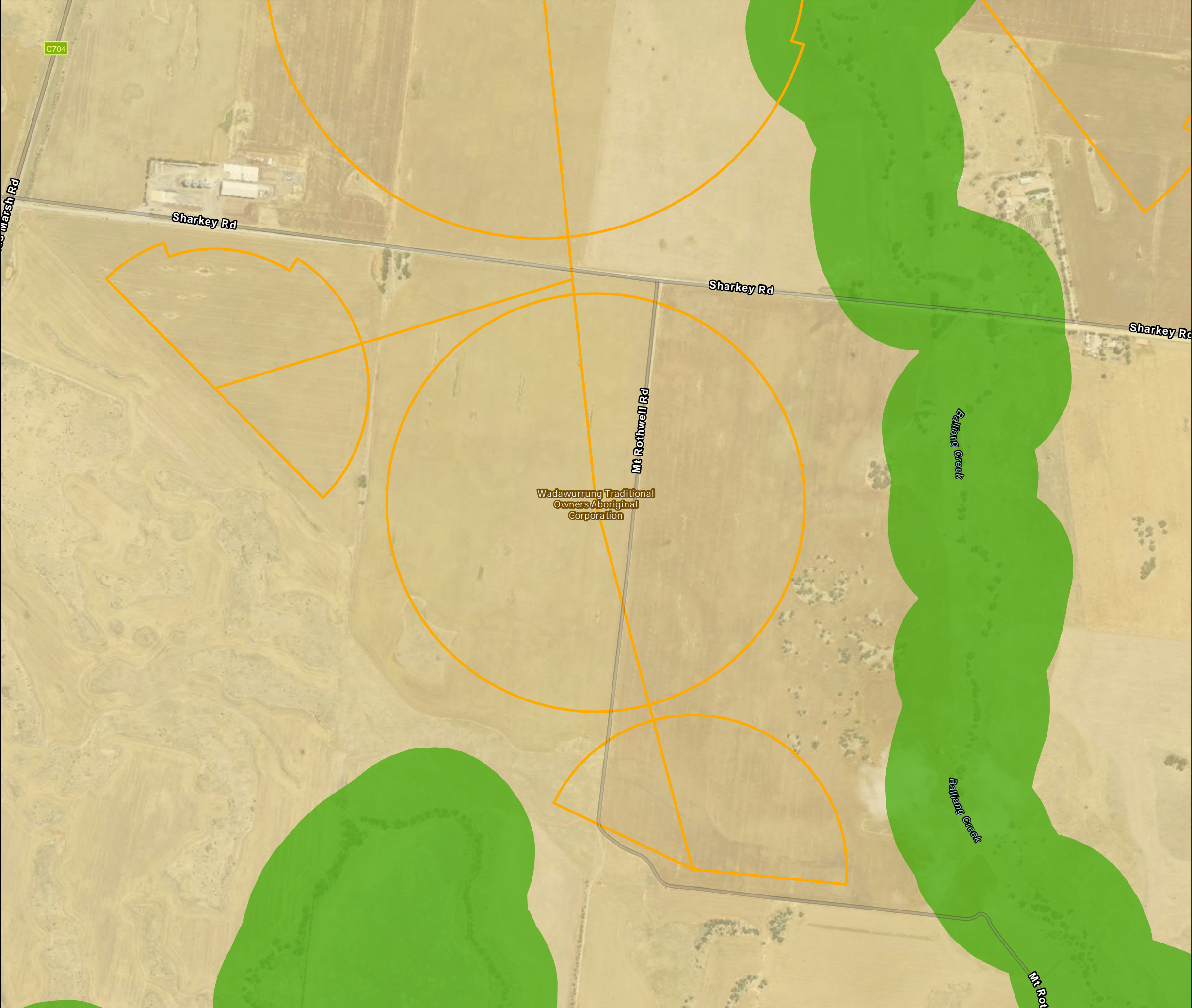
0 250 500

Metres

DATA SOURCES
© Commonwealth of Australia (Geoscience Australia) 2006 Geodata Topo 250k Series 3; Vicmap Data © State of Victoria 2021; CH2M Beca 2021. Aerometrex Metromap 2021; ESRI Basemap 2021

COPYRIGHT: The concepts and information contained in this document are the copyright of Jacobs. Use or copying of the document in whole or in part without the written permission of Jacobs constitutes an infringement of copyright. Jacobs does not warrant that this document is definitive nor free of error and does not accept liability for any loss caused or arising from reliance upon information provided herein.





Legend

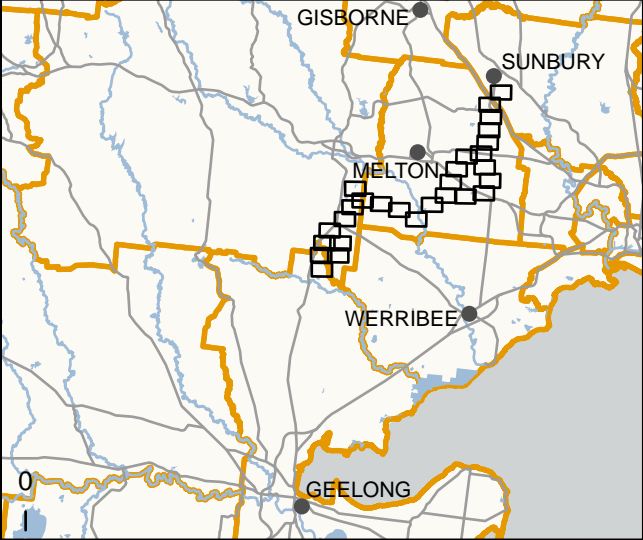
- PBID Foundation Recycled Water Irrigation Areas
- RAP boundary
- Areas of Cultural Heritage Sensitivity

0 250 500 Metres

IS305300

DATA SOURCES
© Commonwealth of Australia (Geoscience Australia) 2006 Geodata Topo 250k Series 3; Vicmap Data © State of Victoria 2021; CH2M Beca 2021. Aerometrex Metromap 2021; ESRI Basemap 2021

COPYRIGHT: The concepts and information contained in this document are the copyright of Jacobs. Use or copying of the document in whole or in part without the written permission of Jacobs constitutes an infringement of copyright. Jacobs does not warrant that this document is definitive nor free of error and does not accept liability for any loss caused or arising from reliance upon information provided herein.





Legend

- Bacchus Marsh RWP Pump Station Assessment Area
- RAP boundary
- Areas of Cultural Heritage Sensitivity
- Western Water Recycled Water Plants

IS305300

0 250 500

Metres

DATA SOURCES
© Commonwealth of Australia (Geoscience Australia) 2006 Geodata Topo 250k Series 3; Vicmap Data © State of Victoria 2021; CH2M Beca 2021. Aerometrex Metromap 2021; ESRI Basemap 2021

COPYRIGHT: The concepts and information contained in this document are the copyright of Jacobs. Use or copying of the document in whole or in part without the written permission of Jacobs constitutes an infringement of copyright. Jacobs does not warrant that this document is definitive nor free of error and does not accept liability for any loss caused or arising from reliance upon information provided herein.

