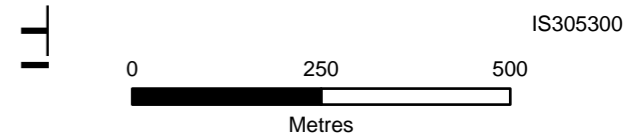


Legend

- ⋯ S2M Interconnector - Shared alignment
- S2M Interconnector Indicative Assessment Area (Option B)
- S2M Interconnector Indicative Assessment Area (Option A)
- Western Water Recycled Water Plants
- LGA Boundary
- VPA PSP boundary

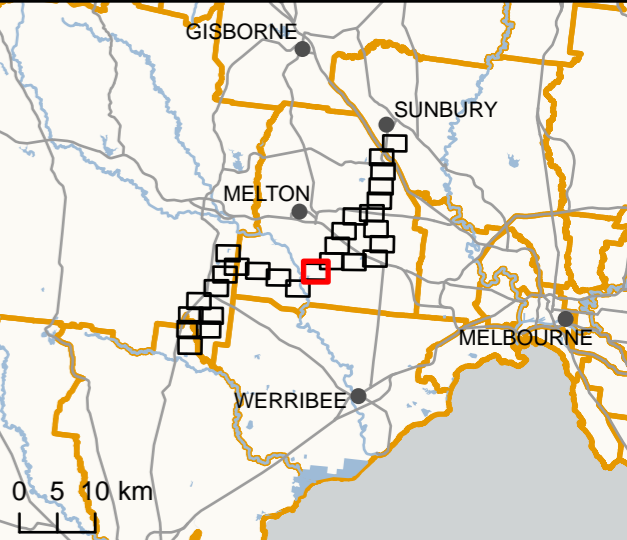
Planning Zones

- FZ - Farming Zone
- GWZ - Green Wedge Zone
- PPRZ - Public Park and Recreation Zone
- PUZ1 - Public Use Zone Service and Utility
- SUZ - Special Use Zone
- UGZ - Urban Growth Zone



DATA SOURCES
 © Commonwealth of Australia (Geoscience Australia) 2006 Geodata Topo 250k Series 3; Vicmap Data © State of Victoria 2021; CH2M Beca 2021. Aerometrex Metromap 2021

COPYRIGHT: The concepts and information contained in this document are the copyright of Jacobs. Use or copying of the document in whole or in part without the written permission of Jacobs constitutes an infringement of copyright. Jacobs does not warrant that this document is definitive nor free of error and does not accept liability for any loss caused or arising from reliance upon information provided herein.



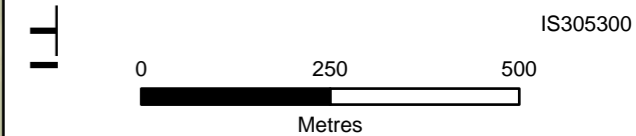


Legend

- M2BM Interconnector Construction Area
- Western Water Recycled Water Plants
- LGA Boundary
- VPA PSP boundary

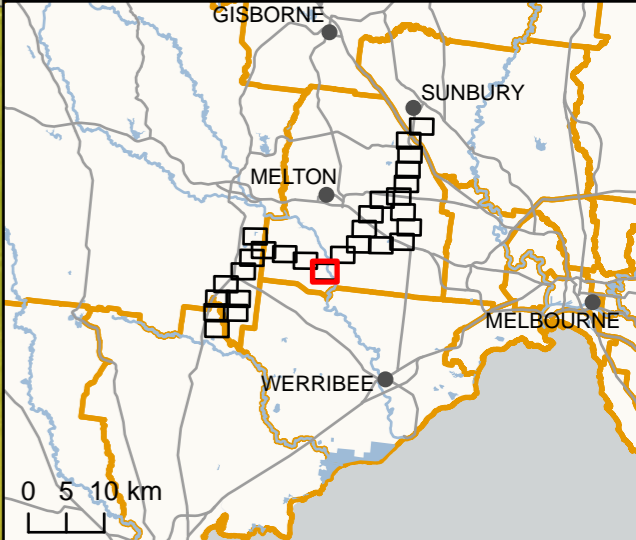
Planning Zones

- GWZ - Green Wedge Zone
- MUZ - Mixed Use Zone
- PUZ1 - Public Use Zone Service and Utility
- RCZ - Rural Conservation Zone
- SUZ - Special Use Zone



DATA SOURCES
 © Commonwealth of Australia (Geoscience Australia) 2006 Geodata Topo 250k Series 3; Vicmap Data © State of Victoria 2021; CH2M Beca 2021. Aerometrex Metromap 2021

COPYRIGHT: The concepts and information contained in this document are the copyright of Jacobs. Use or copying of the document in whole or in part without the written permission of Jacobs constitutes an infringement of copyright. Jacobs does not warrant that this document is definitive nor free of error and does not accept liability for any loss caused or arising from reliance upon information provided herein.



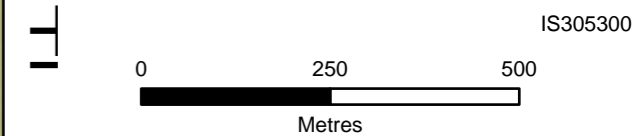


Legend

- M2BM Interconnector Construction Area
- LGA Boundary
- VPA PSP boundary

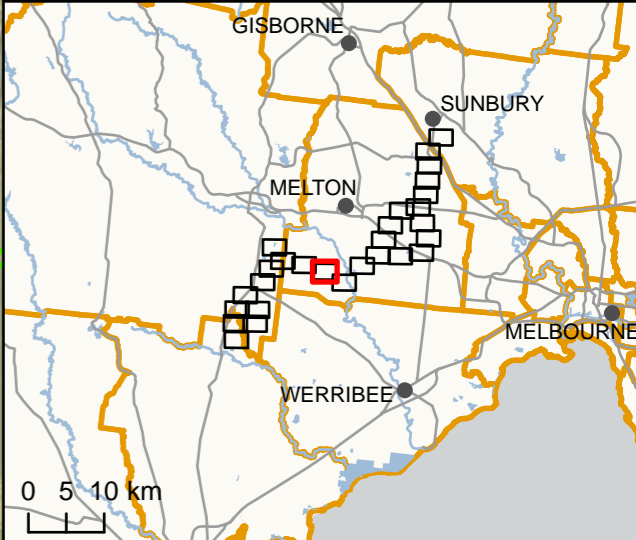
Planning Zones

- GWZ - Green Wedge Zone
- MUZ - Mixed Use Zone
- RCZ - Rural Conservation Zone



DATA SOURCES
 © Commonwealth of Australia (Geoscience Australia) 2006 Geodata Topo 250k Series 3; Vicmap Data © State of Victoria 2021; CH2M Beca 2021. Aerometrex Metromap 2021

COPYRIGHT: The concepts and information contained in this document are the copyright of Jacobs. Use or copying of the document in whole or in part without the written permission of Jacobs constitutes an infringement of copyright. Jacobs does not warrant that this document is definitive nor free of error and does not accept liability for any loss caused or arising from reliance upon information provided herein.



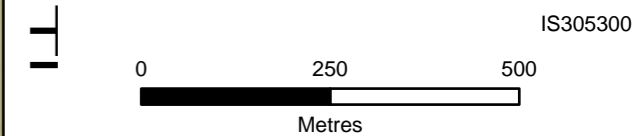


Legend

- M2BM Interconnector Construction Area
- LGA Boundary
- VPA PSP boundary

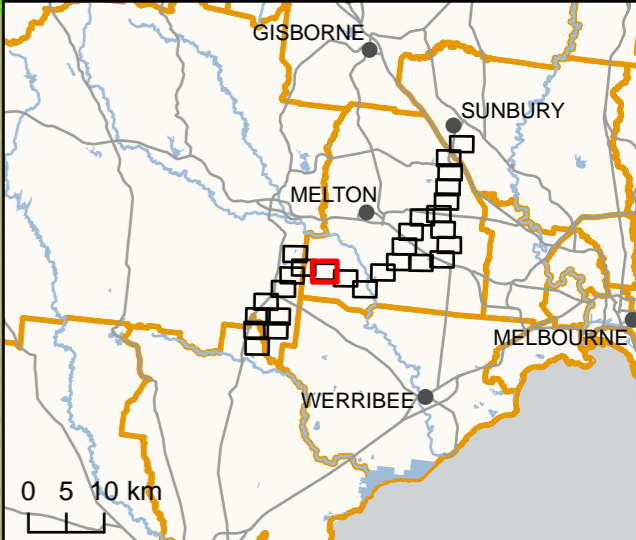
Planning Zones

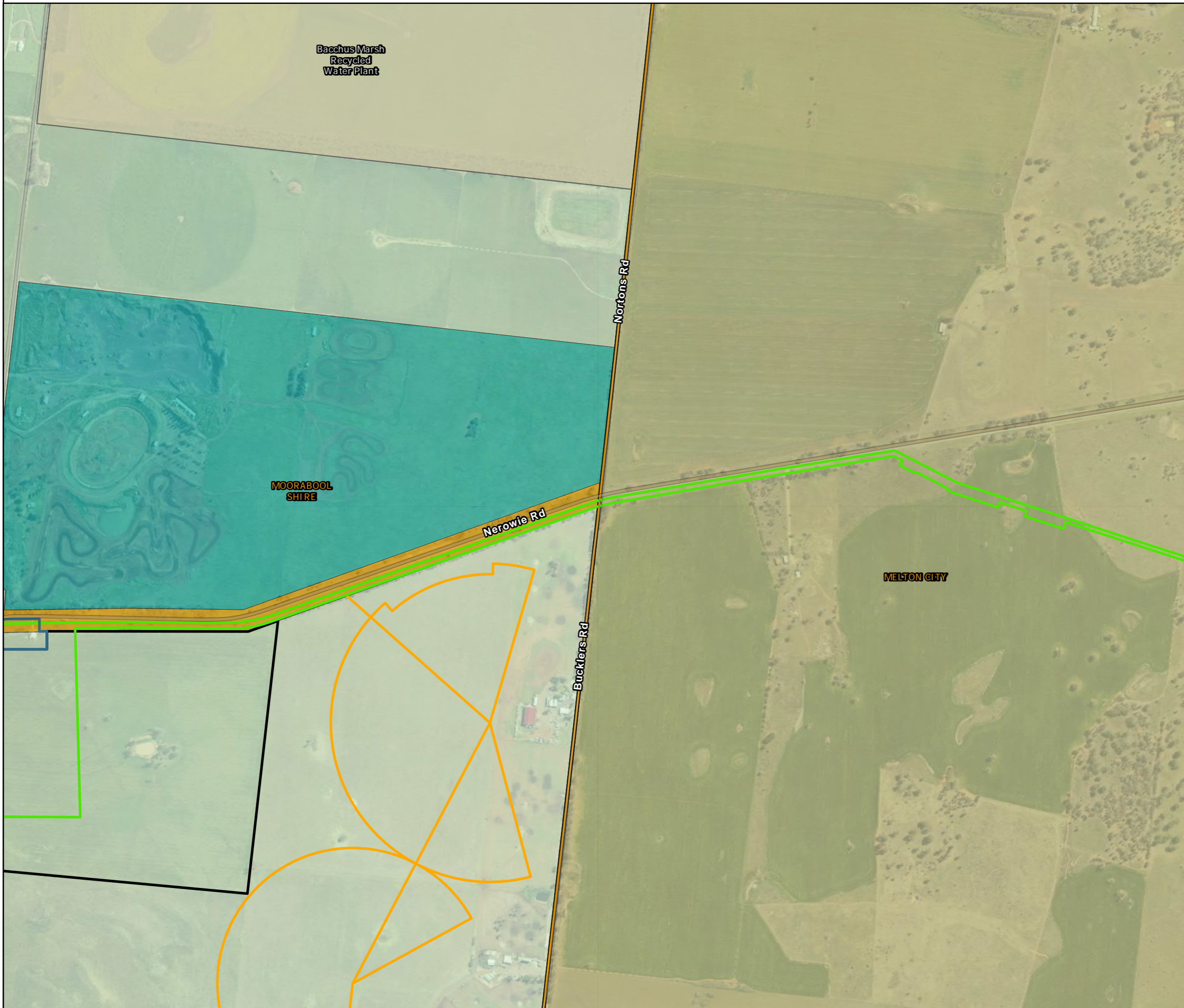
- GWZ - Green Wedge Zone



DATA SOURCES
 © Commonwealth of Australia (Geoscience Australia) 2006 Geodata Topo 250k Series 3; Vicmap Data © State of Victoria 2021; CH2M Beca 2021. Aerometrex Metromap 2021

COPYRIGHT: The concepts and information contained in this document are the copyright of Jacobs. Use or copying of the document in whole or in part without the written permission of Jacobs constitutes an infringement of copyright. Jacobs does not warrant that this document is definitive nor free of error and does not accept liability for any loss caused or arising from reliance upon information provided herein.



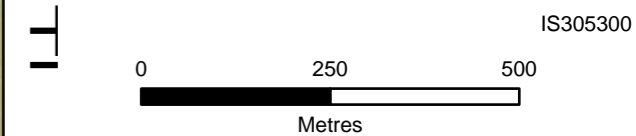


Legend

- PBID Supply Network Construction Area
- M2BM Interconnector Construction Area
- PBID Foundation Recycled Water Irrigation Areas
- Parwan Recycled Water Storage Assessment Area
- Western Water Recycled Water Plants
- LGA Boundary
- VPA PSP boundary

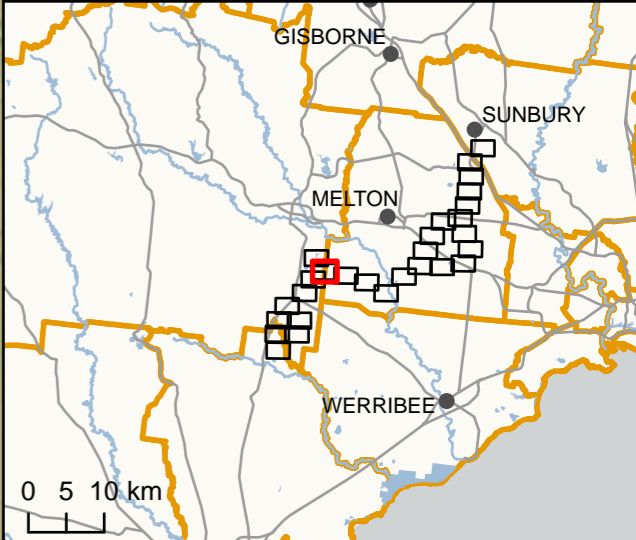
Planning Zones

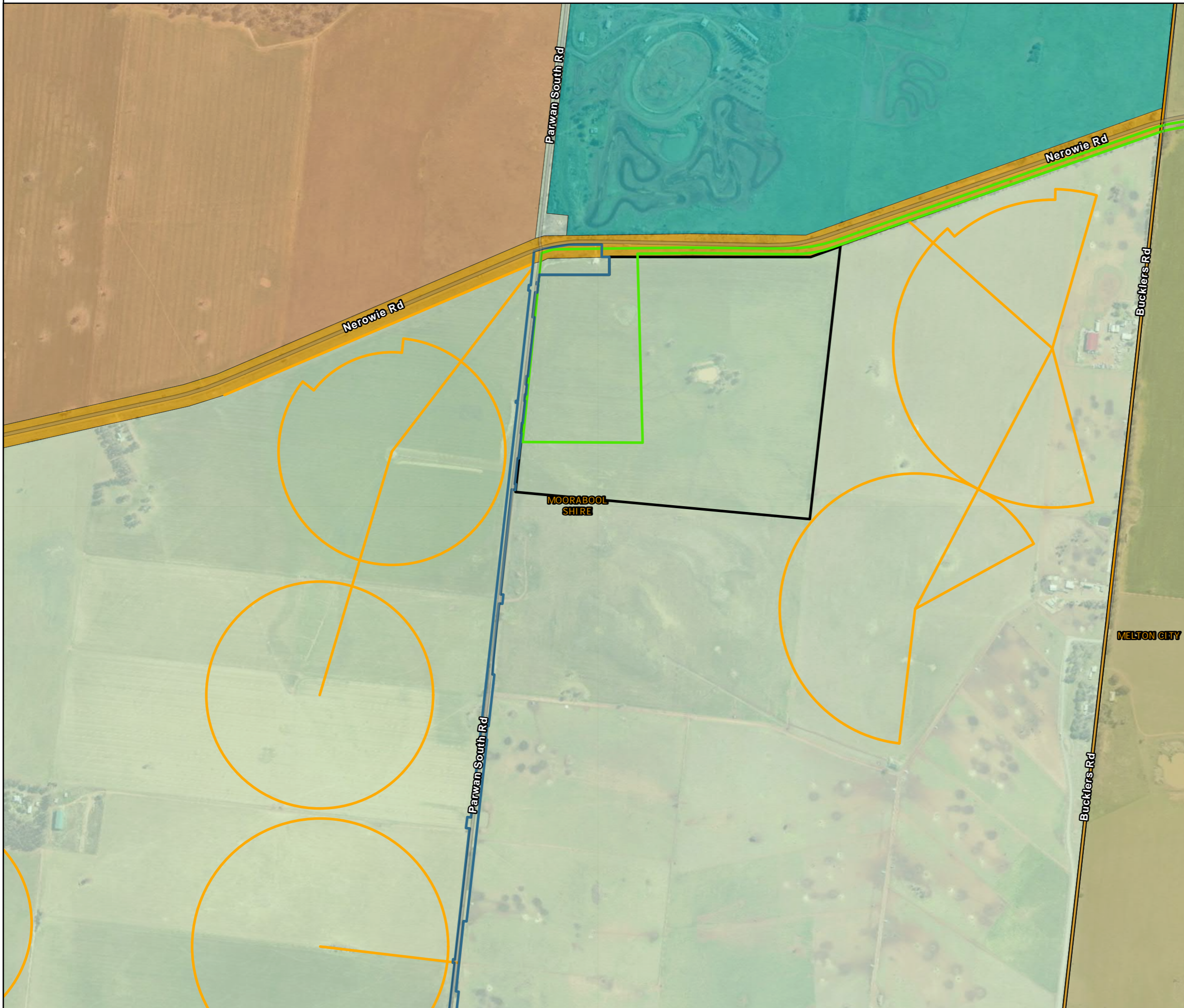
- CDZ - Comprehensive Development Zone
- FZ - Farming Zone
- GWZ - Green Wedge Zone
- IN1Z - Industrial 1 Zone
- PUZ1 - Public Use Zone Service and Utility
- RDZ2 - Road Zone Category 2



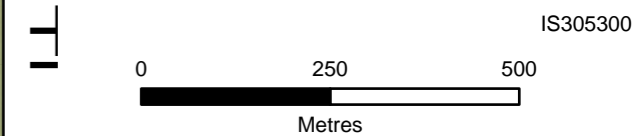
DATA SOURCES
 © Commonwealth of Australia (Geoscience Australia) 2006 Geodata Topo 250k Series 3; Vicmap Data © State of Victoria 2021; CH2M Beca 2021. Aerometrex Metromap 2021

COPYRIGHT: The concepts and information contained in this document are the copyright of Jacobs. Use or copying of the document in whole or in part without the written permission of Jacobs constitutes an infringement of copyright. Jacobs does not warrant that this document is definitive nor free of error and does not accept liability for any loss caused or arising from reliance upon information provided herein.





- Legend**
- PBID Supply Network Construction Area
 - M2BM Interconnector Construction Area
 - PBID Foundation Recycled Water Irrigation Areas
 - Parwan Recycled Water Storage Assessment Area
 - LGA Boundary
 - VPA PSP boundary
- Planning Zones**
- CDZ - Comprehensive Development Zone
 - FZ - Farming Zone
 - GWZ - Green Wedge Zone
 - IN1Z - Industrial 1 Zone
 - RDZ2 - Road Zone Category 2



DATA SOURCES
 © Commonwealth of Australia (Geoscience Australia) 2006 Geodata Topo 250k Series 3; Vicmap Data © State of Victoria 2021; CH2M Bece 2021. Aerometrex Metromap 2021

COPYRIGHT: The concepts and information contained in this document are the copyright of Jacobs. Use or copying of the document in whole or in part without the written permission of Jacobs constitutes an infringement of copyright. Jacobs does not warrant that this document is definitive nor free of error and does not accept liability for any loss caused or arising from reliance upon information provided herein.



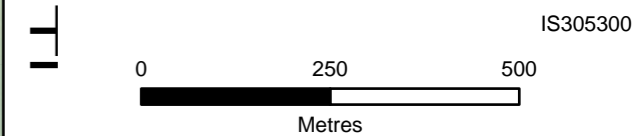


Legend

- PBID Supply Network Construction Area
- PBID Foundation Recycled Water Irrigation Areas
- LGA Boundary
- VPA PSP boundary

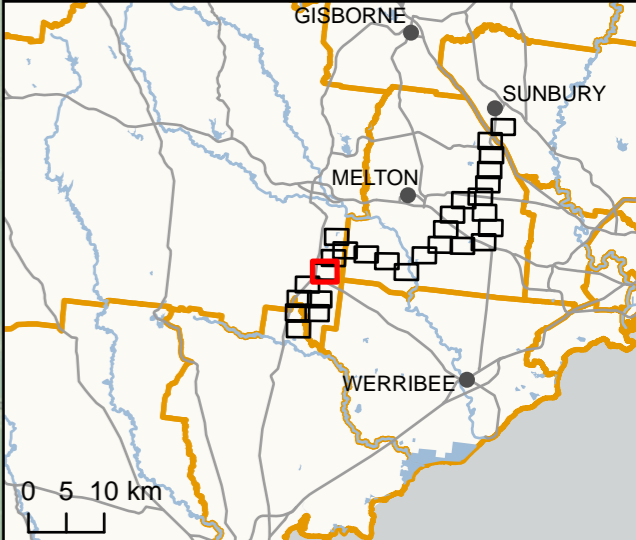
Planning Zones

- FZ - Farming Zone
- RDZ1 - Road Zone Category 1



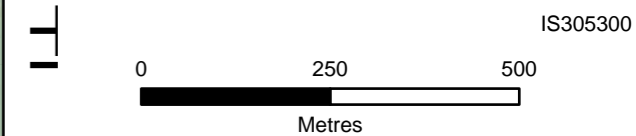
DATA SOURCES
 © Commonwealth of Australia (Geoscience Australia) 2006 Geodata Topo 250k Series 3; Vicmap Data © State of Victoria 2021; CH2M Beca 2021. Aerometrex Metromap 2021

COPYRIGHT: The concepts and information contained in this document are the copyright of Jacobs. Use or copying of the document in whole or in part without the written permission of Jacobs constitutes an infringement of copyright. Jacobs does not warrant that this document is definitive nor free of error and does not accept liability for any loss caused or arising from reliance upon information provided herein.





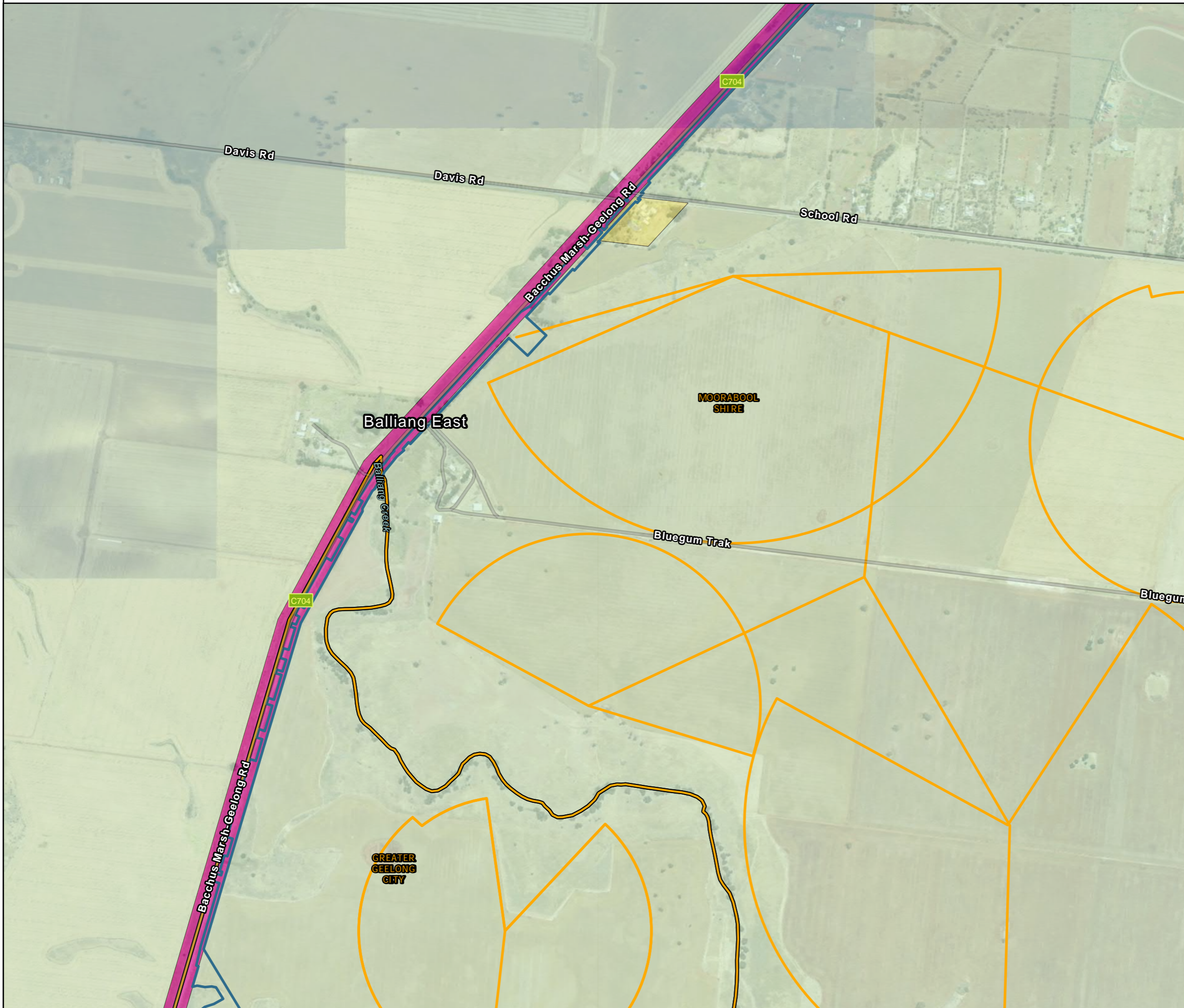
- Legend**
- PBID Supply Network Construction Area
 - PBID Foundation Recycled Water Irrigation Areas
 - LGA Boundary
 - VPA PSP boundary
- Planning Zones**
- FZ - Farming Zone
 - PUZ2 - Public Use Zone Education
 - RDZ1 - Road Zone Category 1



DATA SOURCES
 © Commonwealth of Australia (Geoscience Australia) 2006 Geodata Topo 250k Series 3; Vicmap Data © State of Victoria 2021; CH2M Beca 2021. Aerometrex Metromap 2021

COPYRIGHT: The concepts and information contained in this document are the copyright of Jacobs. Use or copying of the document in whole or in part without the written permission of Jacobs constitutes an infringement of copyright. Jacobs does not warrant that this document is definitive nor free of error and does not accept liability for any loss caused or arising from reliance upon information provided herein.



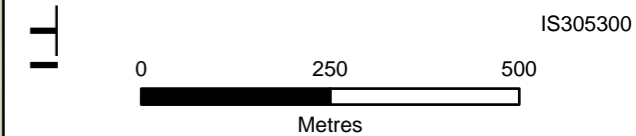


Legend

- PBID Supply Network Construction Area
- PBID Foundation Recycled Water Irrigation Areas
- LGA Boundary
- VPA PSP boundary

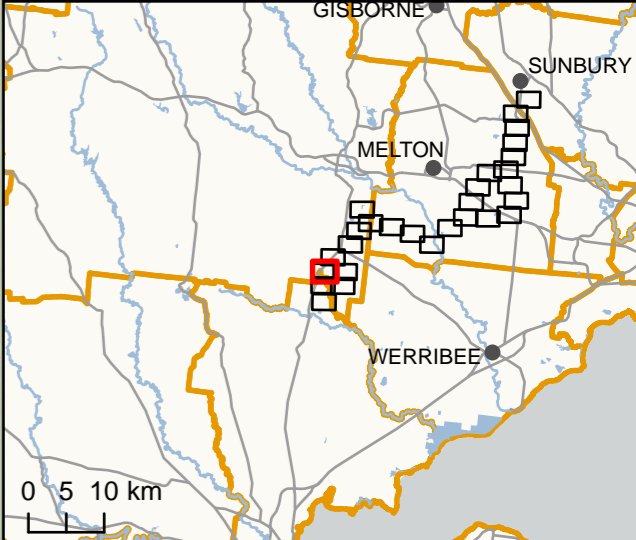
Planning Zones

- FZ - Farming Zone
- PUZ2 - Public Use Zone Education
- RDZ1 - Road Zone Category 1






DATA SOURCES
 © Commonwealth of Australia (Geoscience Australia) 2006 Geodata Topo 250k Series 3; Vicmap Data © State of Victoria 2021; CH2M Beca 2021. Aerometrex Metromap 2021

COPYRIGHT: The concepts and information contained in this document are the copyright of Jacobs. Use or copying of the document in whole or in part without the written permission of Jacobs constitutes an infringement of copyright. Jacobs does not warrant that this document is definitive nor free of error and does not accept liability for any loss caused or arising from reliance upon information provided herein.

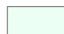



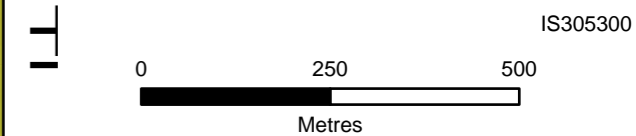


Legend

-  PBID Foundation Recycled Water Irrigation Areas
-  LGA Boundary
-  VPA PSP boundary

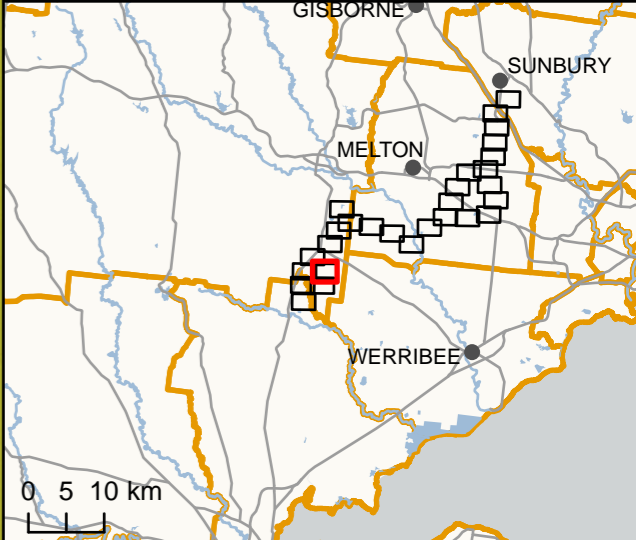
Planning Zones

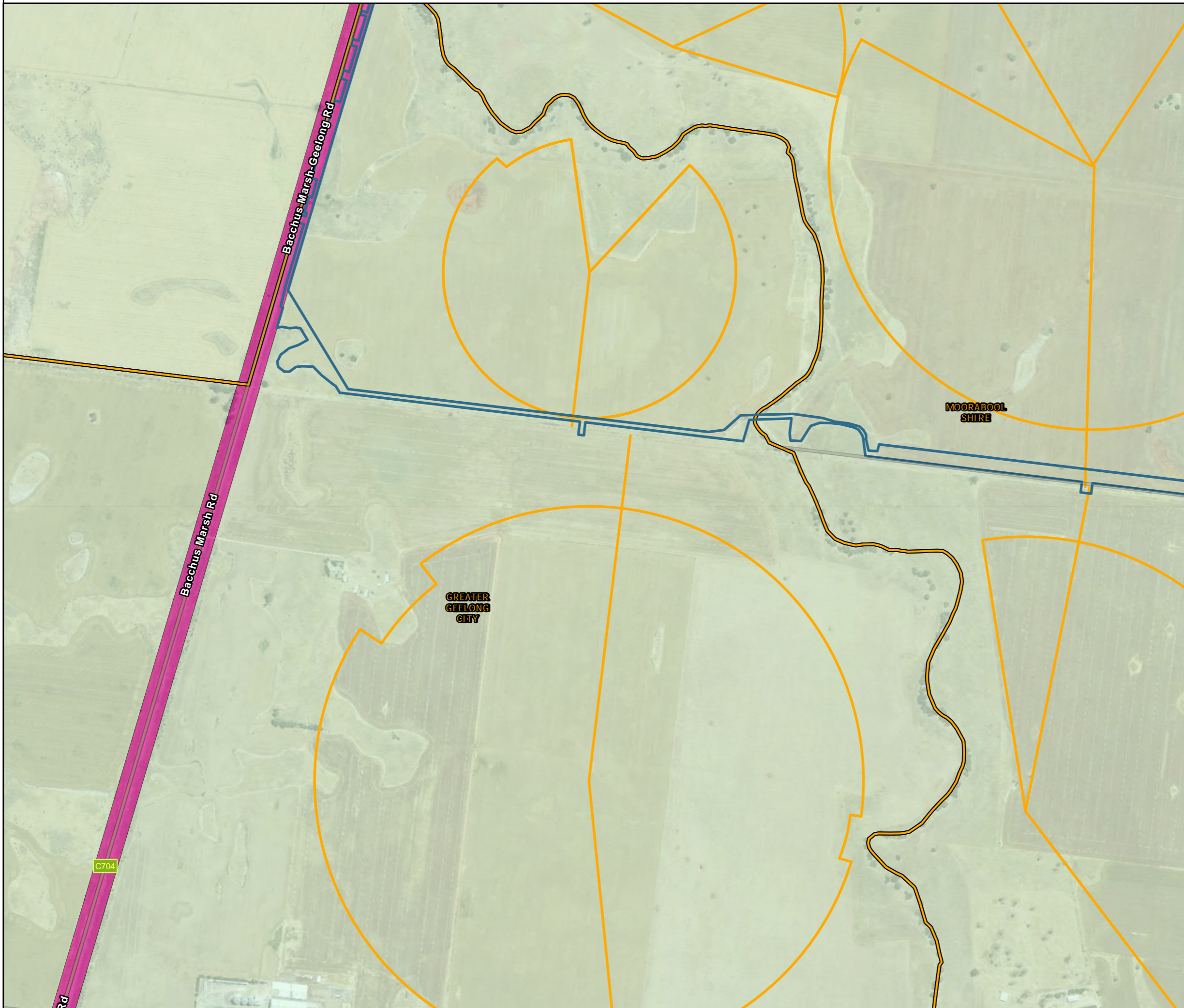
-  FZ - Farming Zone
-  RCZ - Rural Conservation Zone



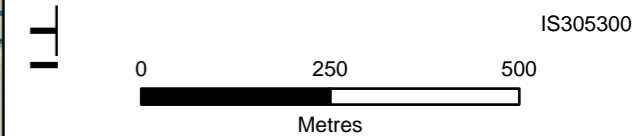
DATA SOURCES
 © Commonwealth of Australia (Geoscience Australia) 2006 Geodata Topo 250k Series 3; Vicmap Data © State of Victoria 2021; CH2M Beca 2021. Aerometrex Metromap 2021

COPYRIGHT: The concepts and information contained in this document are the copyright of Jacobs. Use or copying of the document in whole or in part without the written permission of Jacobs constitutes an infringement of copyright. Jacobs does not warrant that this document is definitive nor free of error and does not accept liability for any loss caused or arising from reliance upon information provided herein.



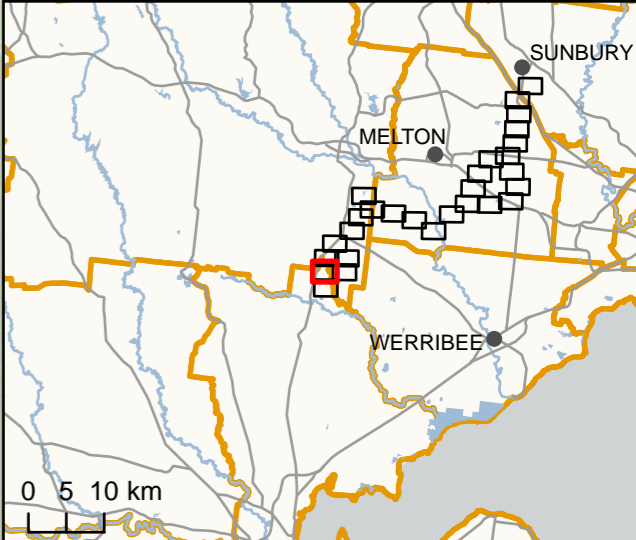


- Legend**
- PBID Supply Network Construction Area
 - PBID Foundation Recycled Water Irrigation Areas
 - LGA Boundary
 - VPA PSP boundary
- Planning Zones**
- FZ - Farming Zone
 - RDZ1 - Road Zone Category 1



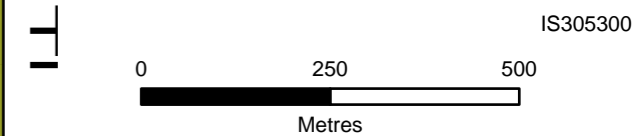
DATA SOURCES
 © Commonwealth of Australia (Geoscience Australia) 2006 Geodata Topo 250k Series 3; Vicmap Data © State of Victoria 2021; CH2M Beca 2021. Aerometrex Metromap 2021

COPYRIGHT: The concepts and information contained in this document are the copyright of Jacobs. Use or copying of the document in whole or in part without the written permission of Jacobs constitutes an infringement of copyright. Jacobs does not warrant that this document is definitive nor free of error and does not accept liability for any loss caused or arising from reliance upon information provided herein.





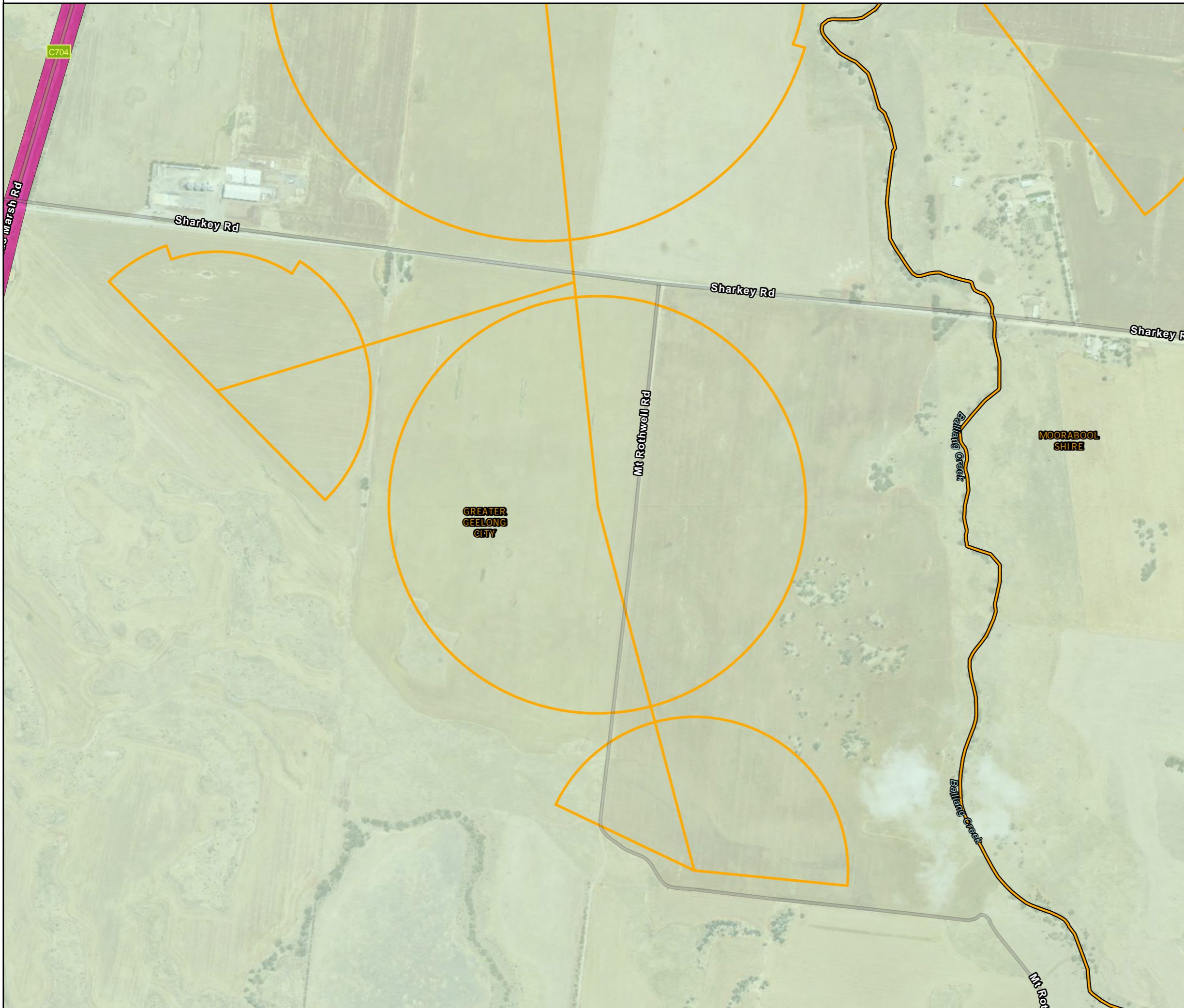
- Legend**
- PBID Supply Network Construction Area
 - PBID Foundation Recycled Water Irrigation Areas
 - LGA Boundary
 - VPA PSP boundary
- Planning Zones**
- FZ - Farming Zone
 - RCZ - Rural Conservation Zone




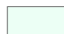



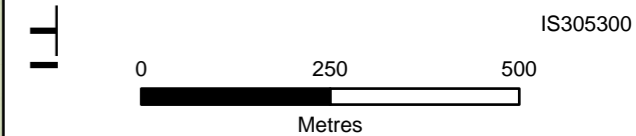
DATA SOURCES
 © Commonwealth of Australia (Geoscience Australia) 2006 Geodata Topo 250k Series 3; Vicmap Data © State of Victoria 2021; CH2M Bece 2021. Aerometrex Metromap 2021

COPYRIGHT: The concepts and information contained in this document are the copyright of Jacobs. Use or copying of the document in whole or in part without the written permission of Jacobs constitutes an infringement of copyright. Jacobs does not warrant that this document is definitive nor free of error and does not accept liability for any loss caused or arising from reliance upon information provided herein.





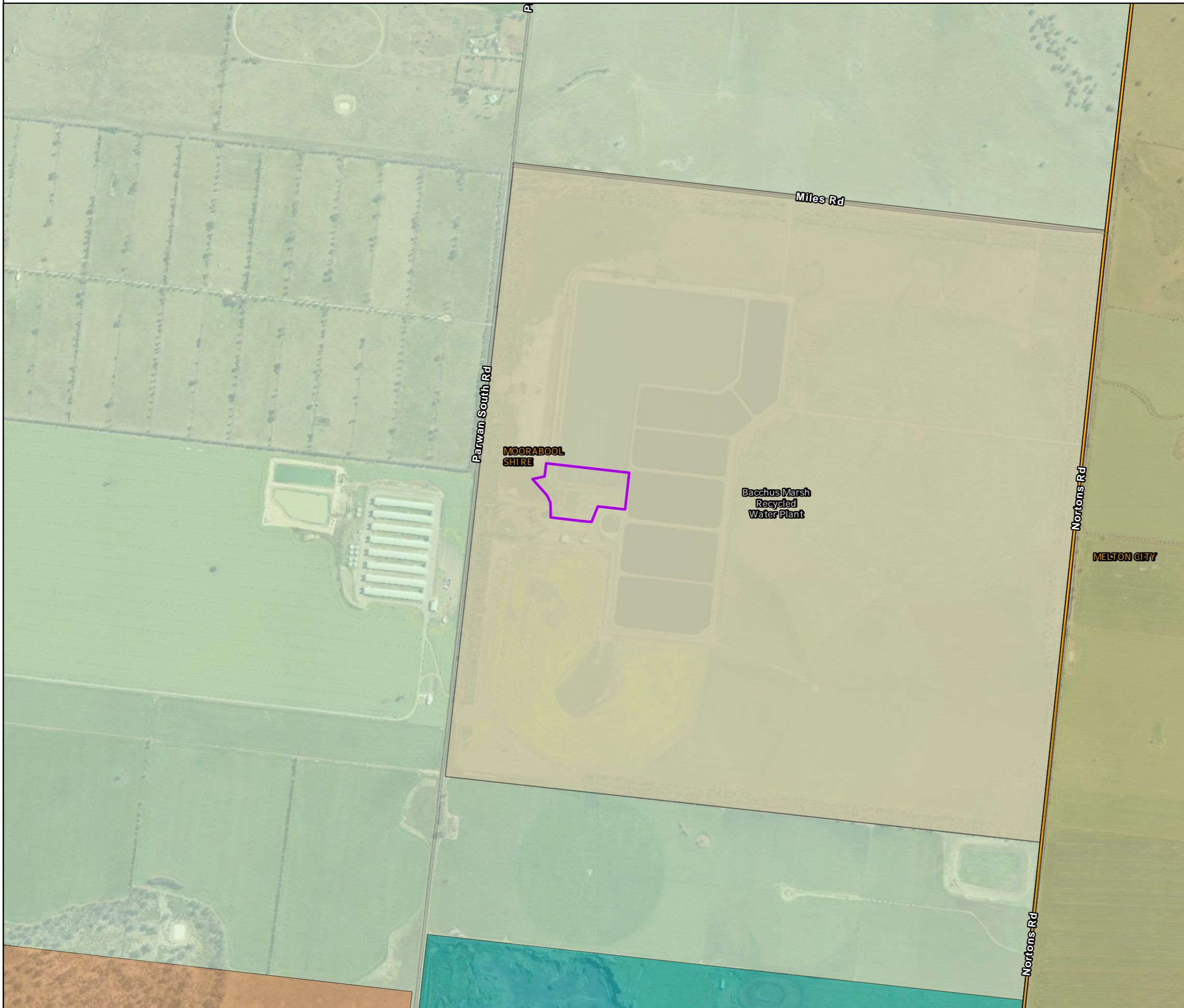
- Legend**
-  PBID Foundation Recycled Water Irrigation Areas
 -  LGA Boundary
 -  VPA PSP boundary
 - Planning Zones**
 -  FZ - Farming Zone
 -  RDZ1 - Road Zone Category 1






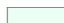


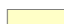


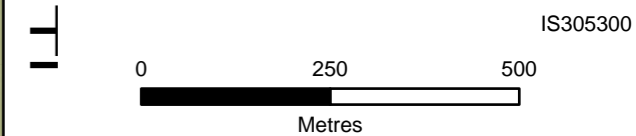
DATA SOURCES
 © Commonwealth of Australia (Geoscience Australia) 2006 Geodata Topo 250k Series 3; Vicmap Data © State of Victoria 2021; CH2M Beca 2021. Aerometrex Metromap 2021

COPYRIGHT: The concepts and information contained in this document are the copyright of Jacobs. Use or copying of the document in whole or in part without the written permission of Jacobs constitutes an infringement of copyright. Jacobs does not warrant that this document is definitive nor free of error and does not accept liability for any loss caused or arising from reliance upon information provided herein.





- Legend**
-  Bacchus Marsh RWP Pump Station Assessment Area
 -  Western Water Recycled Water Plants
 -  LGA Boundary
 -  VPA PSP boundary
- Planning Zones**
-  CDZ - Comprehensive Development Zone
 -  FZ - Farming Zone
 -  GWZ - Green Wedge Zone
 -  IN1Z - Industrial 1 Zone
 -  PUZ1 - Public Use Zone Service and Utility



DATA SOURCES
 © Commonwealth of Australia (Geoscience Australia) 2006 Geodata Topo 250k Series 3; Vicmap Data © State of Victoria 2021; CH2M Beca 2021. Aerometrex Metromap 2021

COPYRIGHT: The concepts and information contained in this document are the copyright of Jacobs. Use or copying of the document in whole or in part without the written permission of Jacobs constitutes an infringement of copyright. Jacobs does not warrant that this document is definitive nor free of error and does not accept liability for any loss caused or arising from reliance upon information provided herein.

