

TOTAL IRRIGATION AREA: 397Ha
 NOMINAL FLOW: 2718ML/250d = 10.8ML/d (126L/s)
 MINIMUM REQUIRED IRRIGATION AREA: 390Ha (7ML/Ha) (TBA WITH MODEL)

XXm: DENOTES MINIMUM REQUIRED PRESSURE AT MACHINE CENTER. ACCOUNTS FOR CP FRICTION & MIN RESIDUAL PRESSURE. BASED ON PACK SIZING OF 6mm/d.

XXm: DENOTES SCENARIO WORKING PRESSURE AT MACHINE CENTER.

SCENARIO 1: ALL CP OPERATING AT 3mm/d (163L/s)
 SCENARIO 2: CP B, C, D OPERATING AT 6mm/d (108L/s)
 SCENARIO 3: CP A OPERATING AT 9mm/d (183L/s) (OUTLET LIMIT CAPACITY)

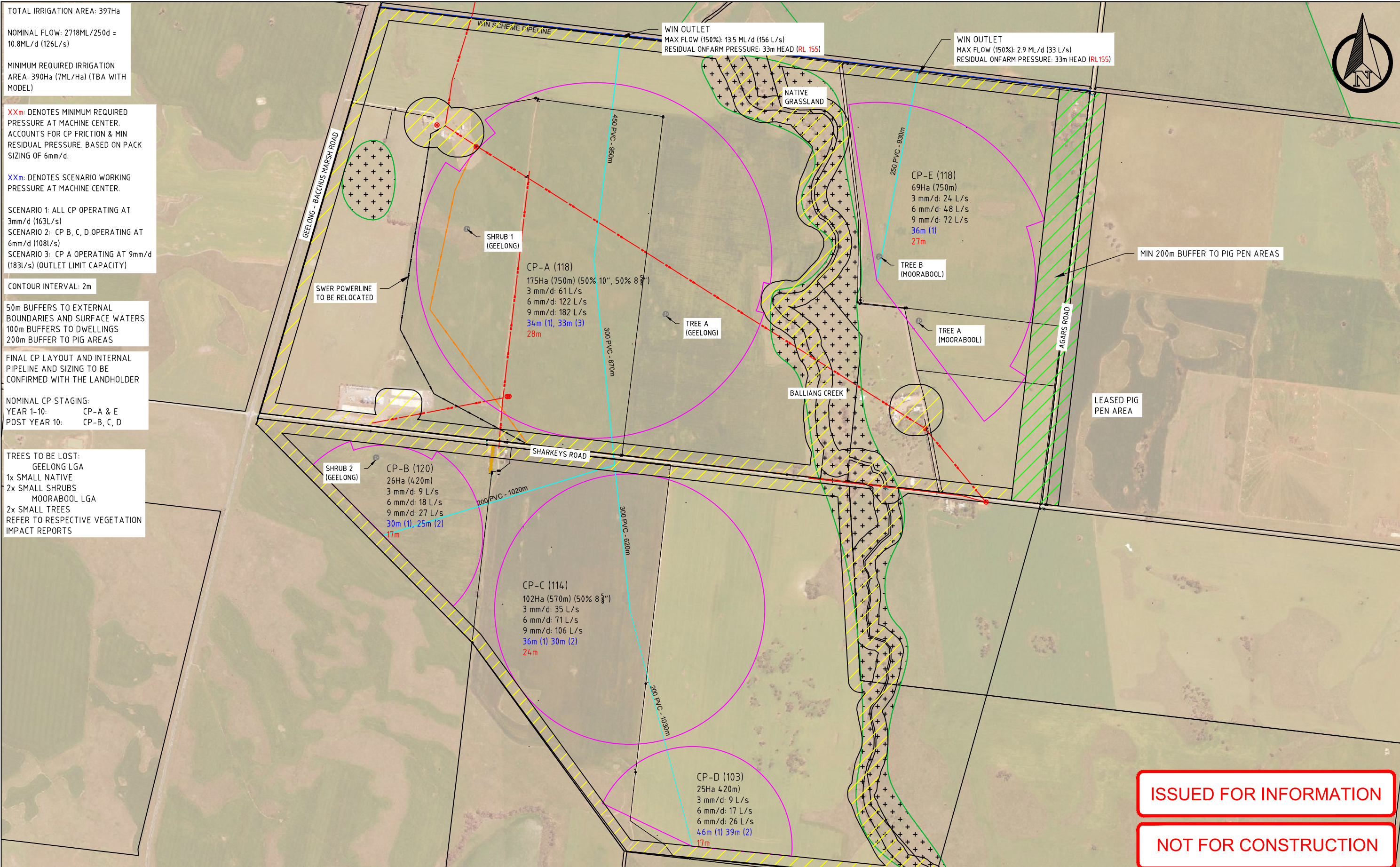
CONTOUR INTERVAL: 2m

50m BUFFERS TO EXTERNAL BOUNDARIES AND SURFACE WATERS
 100m BUFFERS TO DWELLINGS
 200m BUFFER TO PIG AREAS

FINAL CP LAYOUT AND INTERNAL PIPELINE AND SIZING TO BE CONFIRMED WITH THE LANDHOLDER

NOMINAL CP STAGING:
 YEAR 1-10: CP-A & E
 POST YEAR 10: CP-B, C, D


TREES TO BE LOST:
 GEELONG LGA
 1x SMALL NATIVE
 2x SMALL SHRUBS
 MOORABOOL LGA
 2x SMALL TREES
 REFER TO RESPECTIVE VEGETATION IMPACT REPORTS



ISSUED FOR INFORMATION

NOT FOR CONSTRUCTION

REV	DATE	COMMENTS	DRN	CHK
G	23.03.21	BUFFER AREAS ADDED, MOVED OUTLET POSITION	DM	CT
F	20.10.20	CP UPDATED LAYOUT	DM	CT
E	14.09.20	CP LAYOUT AMENDMENTS FOR BUFFERS	DM	CT
D	05.08.20	AMEND HYDRAULICS AND INTERNAL PIPEWORK	DM	CT
C	02.03.20	ISSUED FOR CLIENT INFORMATION	DM	CT
B	17.02.20	FOR INFORMATION - CP-E ADJUSTMENT	DM	CT


 25 Birdwood Av
 Stanhope
 VIC 3623
 Ph: 1300 PINION
 Email: admin@pinionadvisory.com
 www.pinionadvisory.com.au
 © Copyright Pinion Advisory


 WESTERN WATER

	DATE
DESIGNED:	DM 21.10.20
DRAWN:	DM 21.10.20
CHECKED:	CT 21.10.20
APPROVED:	CT 21.10.20

PROJECT		DRAWING TITLE		REVISION	
WESTERN WATER - WESTERN IRRIGATION NETWORK		SHARKEY FARM PLAN		G	
SCALE (A3)	DRAWING NUMBER				
1:15,000	WIN-01				