

Our Ref: 59918162:TW
Contact: Thomas Wright

21 June 2019

Iluka Resources Limited
Locked Bag, 1001
HAMILTON VIC 3300

Attention: Marcus Little

Cardno Victoria Pty Ltd
ABN 47 106 610 913

Level 4
501 Swanston Street
Melbourne VIC 3000
Australia

Phone: + 61 3 8415 7777
Fax: + 61 3 8415 7788

www.cardno.com.au

Dear Marcus,

Ecological implications of exclusions from WIM100 mining footprint

1 Overview

Cardno (Victoria) Pty Ltd (Cardno) was engaged by Iluka Resources Limited (Iluka) to undertake a baseline ecological assessment of an area centred on the WIM100 heavy mineral sands deposit located between Hamilton and Horsham in western Victoria. The deposit is within the EL4282 exploration licence held by Iluka.

The assessment consisted of a desktop study and preliminary field-based assessment for the defined study area (Figure 3). The objectives of the assessment were to identify the ecological values of the study area, identify environmental approvals and permits likely required prior to commencing any potential future mine development, and identify and inform any requirements for further detailed survey. The assessment findings were documented in the report Iluka Baseline Ecological Assessments – WIM100 Ecology Report (Cardno 2019).

Subsequently Cardno was further engaged to prepare a letter of advice on the ecological implications of aligning the mining development footprint to the optimised ore boundary (i.e. indicative mineralised extent 3a in Figure 3), as well as refining the optimised ore boundary to exclude Red Gum Swamp and Jallumba Marsh Flora Reserve (i.e. revised mineralised extent 3a in Figure 3).

The ecological impacts of the indicative and refined mineralised extents is informed by the findings contained within the Baseline Ecology Report (Cardno 2019).

Jallumba Marsh Flora Reserve is located at the intersection of Jallumba-Mockinya Road and Jallumba-Douglas Road, Toolondo. The reserve is zoned as Public Conservation and Resource Zone (PCRZ) within the Horsham Planning Scheme and is managed as a conservation reserve by Parks Victoria. Red Gum Swamp is located to the south of the Toolondo Gun Club Road, and between Hamilton-Natimuk Road and Quick Sinclair Russells Road, Toolondo. Within the Horsham Planning Scheme the eastern half of Red Gum Swamp is zoned as Public Conservation and Resource Zone (PCRZ) while the western half is zoned for farming. The entire swamp has been fenced off from surrounding agricultural activity and is managed as a conservation reserve. The locations of Jallumba Marsh Flora Reserve and Red Gum Swamp are shown in Figure 3.

The Baseline Ecology Report identified Red Gum Swamp as supporting 134.2 hectares (ha) of the eponymously named Ecological Vegetation Class (EVC) Red Gum Swamp (EVC 292) (Cardno 2019). It is characterised by large River Red Gums *Eucalyptus camaldulensis* and the ground layer is dominated by exotic grasses (Figure 1).

Australia • Belgium • Canada • Colombia • Ecuador • Germany • Indonesia • Italy • Kenya •
New Zealand • Papua New Guinea • Peru • Philippines • Tanzania • United Arab Emirates •
United Kingdom • United States • Operations in over 100 countries

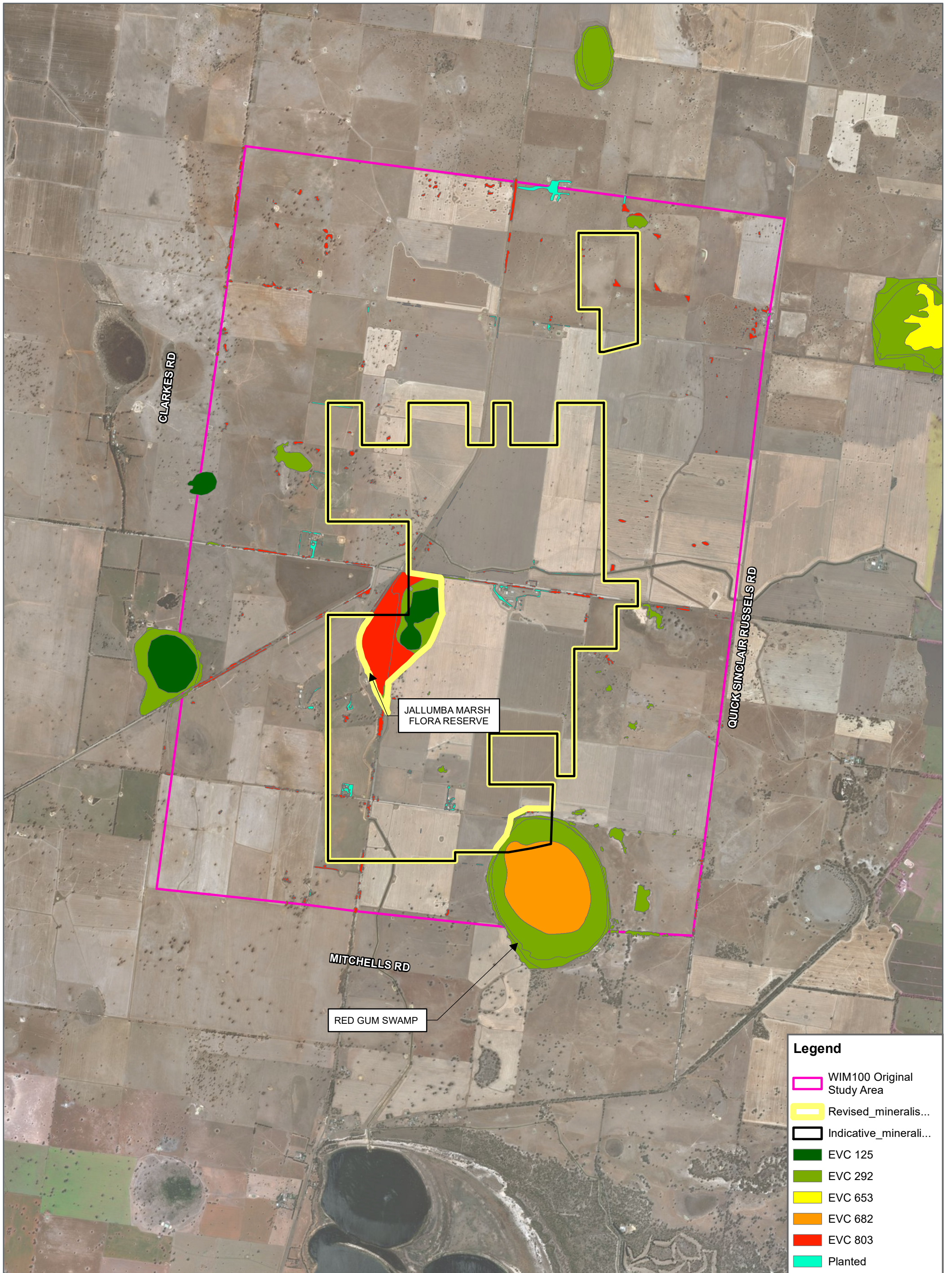


Figure 1. Red Gum Swamp (EVC292) within the study area

Jallumba Marsh Flora Reserve was mapped as supporting predominantly Plains Grassy Wetland (EVC 125) (Cardno 2019) characterised by a diversity of native herbs including Prickfoot *Eryngium vesiculosum* and Yellow balls *Craspedia variabilis* (Figure 2). The Reserve may also support threatened ecological communities listed under the Commonwealth *Environment Protection and Biodiversity Conservation Act 1999* (EPBC Act) including Grey Box (*Eucalyptus microcarpa*) Grassy Woodlands and Derived Native Grasslands of South-eastern Australia, Buloke Woodlands of the Riverina and Murray-Darling Depression Bioregions and Seasonal Herbaceous Wetlands (Freshwater) of the Temperate Lowland Plains.



Figure 2. Plains Grassy Wetland (EVC 125) at Jallumba Marsh Flora Reserve



- Legend**
- WIM100 Original Study Area
 - Revised_mineralis...
 - Indicative_minerali...
 - EVC 125
 - EVC 292
 - EVC 653
 - EVC 682
 - EVC 803
 - Planted



FIGURE 3
1:40,000 Scale at A3

Metres
0 500 1,000

Ecological Vegetation Classes
WIM100 ECOLOGICAL LETTER OF ADVICE



2 Key findings

This section contains information on the ecological values present or likely to be present within three areas of interest; being:

- The study area for the baseline ecological assessment
- The potential development footprint as described the indicative mineralised extent
- The potential development footprint as describe by the revised indicative mineralised extent (Jallumba Marsh Flora Reserve and Red Gum Swam excluded).

This comparison identifies the ecological values associated with the two potential development footprint options. Both development footprints would have a substantially smaller ecological footprint then the baseline study area, and differences in ecological impacts between the two development footprints can be attributed to the ecological values associated with Red Gum Swamp and Jallumba Marsh Flora Reserve.

Ecological values considered in this letter report are threatened species and ecological communities listed under the EPBC Act, Victorian *Flora and Fauna Guarantee Act 1988* (FFG Act) and Victorian Advisory Lists (DEPI 2014; DSE 2009, 2013) as well as native vegetation (EVCs) protected under the Victorian *Planning and Environment Act 1987*.

2.1 Threatened Species

One EPBC Act-listed species is likely to occur in Jallumba Marsh Flora Reserve and Red Gum Swamp: Red-tailed Black-Cockatoo *Calyptorhynchis banksia graptogyne*. Both sites support large Rive Red Gums with hollows that provide breeding habitat for the species. The nearby Darragan Swamp Wildlife Reserve, located just to the east of the northern end of the baseline study area, may also provide breeding habitat for the species. All three sites provide the best quality habitat for woodland birds within the baseline study area.

The Baseline Ecology Report identified the following State-significant woodland birds as potentially occurring within the baseline study area:

- Crested Bellbird *Oreoica gutturalis gutturalis*
- Major Mitchell's Cockatoo *Lophochroa leadbeateri*
- Slender-billed Thornbill *Acanthiza iredalei hedleyi*
- Barking Owl *Ninox connivens connivens*
- Speckled Warbler *Pyrrholaemus sagittatus*

The State-significant Diamond Firetail *Stagonopleura guttata* and Brown Treecreeper (eastern subspecies) *Climacteris picumnus victoriae* were recorded by Cardno (2019) in the Jallumba Marsh Flora Reserve.

Red Gum Swamp (and Darragan Swamp Wildlife Reserve) also provide the best quality habitat for threatened wetland species. State-significant wetland species that may occur at these sites include the Australasian Shoveler *Anas rhynchos*, Eastern Great Egret *Ardea modesta*, Little Bittern *Ixobrychus minutus dubius*, Glossy Ibis *Plegadis falcinellus* and Royal Spoonbill *Plegadis regia*.

The State-significant Brown Toadlet *Pseudophryne bibronii* was found within the Jallumba Marsh Flora Reserve; however, the species is expected to be found throughout the baseline study area following detailed surveys proposed for Autumn 2019.

The EPBC Act-listed Growling Grass Frog *Litoria raniformis* is likely to occur in the baseline study area. Preferred habitat for the species includes swamps, wetlands, channels and drainage lines which include large areas found outside of Red Gum Swamp and Jallumba Marsh Flora Reserve.

Six threatened flora species were recorded by Cardno (2019) within the baseline study area, all of which are of State-significance:

- Rock Wattle *Acacia rupicola*
- Buloke *Allocasuarina luehmannii*
- Buloke Mistletoe *Amyema linophylla* subsp. *orientalis*
- Wimmera Woodruff *Asperula wimmerana*

- Winged Water Star-wort *Callitriche umbonata*
- Leek Flax-lily *Dianella porracea*.

Only one of these species was recorded in Jallumba Marsh Flora Reserve – Wimmera Woodruff; which was also found throughout the baseline study area.

The FFG Act-listed Small Milkwort *Comesperma polygaloides* has previously been identified within the Jallumba Marsh Flora Reserve and is still assumed to be present despite not being found by Cardno (2019), due to the ephemeral nature of the species.

Without the results of targeted surveys, it is difficult to assess the comparative differences in ecological impacts between the baseline study area, the indicative mineralised extent and refined mineralised extent. Using impacts to habitat as an indicator, threatened species are more likely to be impacted under the baseline study area than the indicative mineralised extent, and the indicative mineralised extent than the refined mineralised extent. Differences in habitat impacts between the indicative mineralised extent and the refined mineralised extent is attributed to Jallumba Marsh Flora Reserve, as there are little differences in impacts to Red Gum Swamp between the two possible mining development footprints.

2.2 Threatened Ecological Communities

There could be a substantial reduction in the potential impacts to EPBC Act-listed threatened ecological communities (TECs) under either the indicative or revised mineralised extents, compared to the baseline study area. The Baseline Ecology Report (Cardno 2019) identifies the potential for three EPBC Act-listed TECs to occur in the baseline study area:

- Grey Box Grassy Woodlands and Derived Native Grasslands of South-eastern Australia (Grey Box TEC)
- Buloke Woodlands of the Riverina and Murray-Darling Depression Bioregions (Buloke TEC)
- Seasonal Herbaceous Wetlands (Freshwater) of the Temperate Lowland Plains (Wetlands TEC).

Within the indicative mineralised extent, all three communities have potential to occur in Jallumba Marsh Flora Reserve, and to a lesser extent overall than in the baseline study area (Table 1). No EPBC Act-listed communities are predicted to occur within Red Gum Swamp (Figure 4).

Excluding Jallumba Marsh Flora Reserve from the proposed mining footprint as part of the revised mining extent, would further reduce the potential impacts on TECs (Table 1). Impacts to the Grey Box and Buloke TECs is predicted to be 0.1 ha or less, while there are no predicted impacts to the Wetland TEC.

The baseline study area supports one FFG Act-listed TEC, Victorian Temperate Woodland Bird Community (Cardno 2019). The presence of this community is based on the presence of State-significant fauna woodland birds. The community is still predicted to occur in the indicative and revised mineralised extents where the community may be associated with high-quality woodlands in road-reserves. Nonetheless, the likelihood of impacting on the TEC under the indicative or revised mineralised extent is greatly diminished compared to the baseline study area, due to the substantial differences in suitable habitat.

Two other FFG Act-listed TECs have potential to occur in the baseline study area:

- Red Gum Swamp No. 1
- Semi-arid Northwest Plains Buloke Grassy Woodland Community.

Areas supporting EVC 292 are also likely to meet the definition of Red Gum Swamp No. 1. Impacts to EVC 292 are predicted to be substantially reduced under the indicative mineralised extent, which mostly avoids Red Gum Swamp where the EVC is predominantly found within the baseline study area. The revised mineralised extent avoids all of Red Gum Swamp and therefore most areas of EVC 292 mapped within the baseline study area. (Figure 4).

Semi-arid Northwest Plains Buloke Grassy Woodland Community has potential to occur in areas supporting EVC 803 dominated by Buloke. Most of these areas occur within sections of the Jallumba Marsh Flora which

would be impacted by the indicative mineralised extent. The TEC is also predicted to occur in road-reserves that would be impacted under the revised mineralised extent.

Table 1. Areas for EPBC Act-listed threatened ecological communities with potential to occur in the baseline study area, indicative mineralised extent 3a, and revised mineralised extent 3a (all see Figure 3).

Community	Area (ha)		
	Baseline study area	Indicative mineralised extent 3a	Revised mineralised extent 3a
Grey Box (<i>Eucalyptus microcarpa</i>) Grassy Woodlands and Derived Native Grasslands of South-eastern Australia	56.67	39.91	<0.01
Buloke Woodlands of the Riverina and Murray-Darling Depression Bioregions	56.61	40.18	0.11
Seasonal Herbaceous Wetlands (Freshwater) of the Temperate Lowland Plains	57.85	19.37	0.00

2.3 Ecological Vegetation Classes

Patches of native vegetation within the baseline assessment study area were identified and assigned an EVC by sub-sampling at 110 locations and extrapolated using aerial photography (Cardno 2019). Following this approach 448 ha of patches of native vegetation were identified within the baseline assessment study area (Figure 3).

Impacts to native vegetation are predicted to reduce by approximately 80% to less than 100 hectares under the indicative mineralised extent (Table 2), while under the revised mineralised extent impacts to native vegetation are predicted to be less than one hectare.

Table 2. Areas for EVCs within the revised mining footprint.

EVC	BCS	Area (ha)		
		Baseline study area	Indicative mineralised extent 3a	Revised mineralised extent 3a
WIM_0125	Endangered	56.50	19.37	0.00
WIM_0292	Vulnerable	280.40	33.38	0.06
WIM_0653	Endangered	23.40	0.00	0.00
WIM_0803	Endangered	88.00	40.51	0.17
	Total	448.30	93.26	0.23

2.4 Offsets (State)

In accordance with Victoria's *Guidelines for the removal, destruction or lopping of native vegetation* 'the Guidelines' (DELWP 2017), the removal of native vegetation will need to be offset. Cardno has provided general advice to Iluka on the potential differences in offset requirements between the indicative mineralised extent and revised mineralised extent.

The offset requirements for the removal of native vegetation were calculated by DELWP using the habitat hectare data collected during the Baseline Ecology Report. Native vegetation removed is based on native patches and does not include scattered trees which have not been fully assessed in the field.

Offset requirements were calculated based on the comparative differences in native vegetation clearing between the indicative mineralised extent and the revised mineralised extent. The offset calculations were therefore based largely on native vegetation contained within the Red Gum Swamp and Jallumba Marsh Flora Reserve. The difference in offset requirements for the two potential mining footprints is contained within the Ensym report in Appendix A. Due to the additional native vegetation that would be cleared, the indicative mineralised extent would require additional offsets for 36 threatened species, with between 27 and 89 Species Habitat Units (SHUs) required for each species. These additional offsets are avoided if the Jallumba Marsh Flora Reserve and Red Gum Swamp are excluded from the indicative mineralised extent.

The average market rate for third-party offsets (purchasing offset credits from a registered offset broker) is approximately [REDACTED] per SHU¹. This market rate is reflective of trades for offset credits of a smaller scale than the offset calculations contained with the Ensym report (Appendix A). For larger offset trades it is expected that a lower rate could be negotiated. Another cost-effective offset option would include purchasing and managing land that has been identified as supporting species habitat (i.e. first party offset) that meets all of the project offset requirements.

3 Summary

The table below provides a summary of the implications under relevant environmental legislation for the three possible mining development footprints considered: baseline study area, indicative mineralised extent and revised mineralised extent. While ecological impacts under the indicative mineralised extent are expected to be substantially less than for the baseline study area, and further substantially reduced under the revised mineralised extent, targeted field surveys for threatened species and TECs are required to confirm any changes to the implications for environmental approvals and permitting.

Table 3. Summary of findings relevant to environmental legislation

Legislation	Original study area findings (as per Table 1-1 of Cardno 2019)	Impact based on indicative mineralised extent	Impacts based on revised mineralised extent
Commonwealth Environment Protection and Biodiversity Conservation Act 1999	One category of Matter of National Environmental Significance (MNES) present or likely to be present within the study area: listed threatened species and ecological communities. The study area has potential to support three TECs and two threatened fauna species (Red-tailed Black-Cockatoo and Growling Grass Frog). The TECs which are likely to be present include: <ul style="list-style-type: none"> - Grey Box TEC - Buloke TEC - Wetland TEC 	Substantial reduction in the potential areas supporting TECs and breeding habitat for Red-tailed Black-Cockatoo. Targeted surveys still required to determine presence of TECs and Red-tailed Black-Cockatoo habitat. Indicative mineralised extent still impacts on channel system which is suitable habitat for Growling Grass Frog. Likelihood of significant impact to MNES assumed to be lower due to reduced impacts on potential habitat; however, this needs to be confirmed following targeted surveys.	Further reduction in potential impacts to MNES, with suitable habitat for TECs and threatened species confined to narrow road-reserves given avoidance of entire Red Gum Swamp and Jallumba Marsh Flora Reserve. Revised mineralised extent still impacts on channel system which is suitable habitat for Growling Grass Frog. Significant impact to MNES less likely than other two options, but requires targeted surveys to confirm.
Victorian Flora and Fauna Guarantee Act 1988	Confirmed presence of one listed ecological community, (Victorian Temperate Woodland Bird Community) and likely presence of two more (Semi-arid Northwest Plains Buloke Grassy Woodland	Listed species and TECs potentially occur within the impacted areas of Red Gum Swamp and Jallumba Marsh Flora Reserve, and road-reserves.	Listed species and TECs potentially occur in road-reserves. Potential for impact to listed species and TECs significantly lower than other two

¹ This figure is an approximate of all offset trades completed since the Guidelines came into effect in December 2017. Offset prices can vary considerably across regions and depending on availability and the type of species habitat units (SHUs) required. A formal quote from an offset broker is recommended to get a more accurate estimate of the current market value of offset requirements for the indicative or revised mineralised extents.

Legislation	Original study area findings (as per Table 1-1 of Cardno 2019)	Impact based on indicative mineralised extent	Impacts based on revised mineralised extent
Victorian Environment Effects Act 1978	<p>Community, and Red Gum Swamp Community No. 1). Five listed species were recorded in the study area (Buloke, Magpie Goose, Diamond Firetail, Whiskered Tern and Brown Toadlet).</p> <p>In response to the Environment Effects Statement (EES) referral triggers for individual environmental effects, the study area supports more than 10 ha of an endangered Ecological Vegetation Class (EVC), and provides habitat for threatened species. An assessment of aquatic biodiversity was not undertaken. In response to the EES referral triggers for a combination of potential environmental effects, the study area was mapped as supporting 448 ha of native vegetation and 942 scattered trees, supports or is likely to support ecological communities and species listed under the <i>Flora and Fauna Guarantee Act 1988</i> (FFG Act), and is covered by Environmental Significance Overlays which relate to the protection of the Natimuk Douglas Wetlands and other local values.</p>	<p>Detailed assessment of aquatic habitats to establish presence and condition of fish and invertebrate populations still required.</p> <p>Impact on native vegetation including endangered EVCs significantly reduced, although residual impact still above EES threshold (10 ha).</p>	<p>options, although targeted surveys required to confirm</p> <p>Detailed assessment of aquatic habitats to establish presence and condition of fish and invertebrate populations still required.</p> <p>Impact on native vegetation including endangered EVCs below EES threshold (10 ha).</p>
Victorian Mineral Resources (Sustainable Development) Act 1990	<p>A mining license under the <i>Mining Resources (Sustainable Development) Act 1990</i> is likely to stipulate conditions on the removal of native vegetation and offset requirements</p>	<p>No change</p>	<p>No change.</p>
Victorian Planning and Environment Act 1987 – Guidelines for the removal, destruction or lopping of native vegetation (DELWP 2017)	<p>Mapping at 1:10,000 scale identified 448 ha of native patches and 942 scattered trees within the study area. Mapped wetlands (which are classified as native vegetation under the Guidelines) are also present throughout the study area. According to Native Vegetation Information Management (NVIM) native vegetation within the study area has been assigned to Location 1 or Location 2.</p>	<p>Contains approximately half of the extent of native vegetation patches.</p>	<p>Impacts to native vegetation reduced to less than one hectare.</p> <p>Would avoid additional offsets requirements of between 27 and 89 SHUs for 36 threatened species.</p>
Victorian Catchment and Land Protection Act 1994	<p>Four declared weeds (Bridal Creeper, Slender Thistle, Spear Thistle and African Boxthorn) and one declared pest (Red Fox) was recorded in the study area.</p>	<p>No change</p>	<p>No change</p>
Victorian Wildlife Act 1975	<p>Study area provides a variety of habitats including mature woodland, large scattered trees and permanent and ephemeral swamps and wetlands that support, or are likely to support, wildlife protected under the Act.</p>	<p>No change</p>	<p>No change</p>

Yours sincerely,



Thomas Wright
Business Unit Manager - Melbourne Water & Environment
for Cardno
Direct Line: 8415 7512
Email: thomas.e.wright@cardno.com.au

References

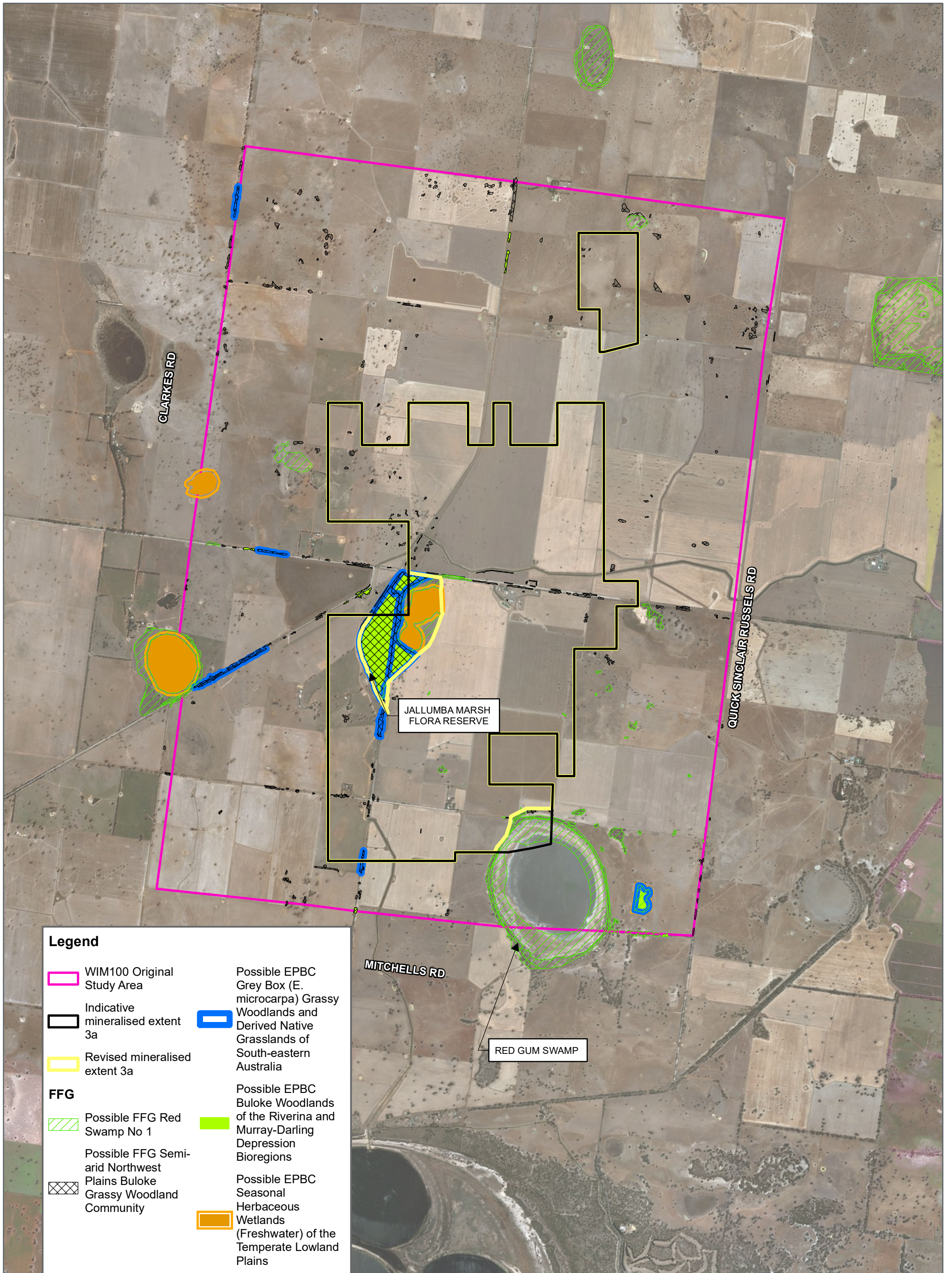
Cardno 2019. Iluka Baseline Ecological Assessments – WIM 100 Ecology Report Murray Basin Fine Mineral Deposits. Final report prepared for Iluka, February 2019.

DELWP 2017. Guidelines for the removal, destruction or lopping of native vegetation. Department of Environment, Land, Water and Planning, Victorian Government, East Melbourne.

DEPI 2014. Advisory list of rare or threatened plants in Victoria.
https://www.environment.vic.gov.au/__data/assets/pdf_file/0021/50448/Advisory-List-of-Rare-or-Threatened-Plants-in-Victoria-2014.pdf

DSE 2009. Advisory list of threatened invertebrate fauna in Victoria.
https://www.environment.vic.gov.au/__data/assets/pdf_file/0016/50452/Advisory_List_of_Threatened_Invertebrate_Fauna_2009_FINAL_Sept_2009.pdf

DSE 2013. Advisory list of threatened vertebrate fauna in Victoria.
https://www.environment.vic.gov.au/__data/assets/pdf_file/0014/50450/Advisory-List-of-Threatened-Vertebrate-Fauna_FINAL-2013.pdf



Legend

	WIM100 Original Study Area		Possible EPBC Grey Box (E. microcarpa) Grassy Woodlands and Derived Native Grasslands of South-eastern Australia
	Indicative mineralised extent 3a		Possible EPBC Buloke Woodlands of the Riverina and Murray-Darling Depression Bioregions
	Revised mineralised extent 3a		Possible FFG Red Swamp No 1
FFG			Possible FFG Semi-arid Northwest Plains Buloke Grassy Woodland Community
	Possible FFG Red Swamp No 1		Possible EPBC Seasonal Herbaceous Wetlands (Freshwater) of the Temperate Lowland Plains
	Possible FFG Semi-arid Northwest Plains Buloke Grassy Woodland Community		

Appendix A

Scenario test – native vegetation removal

This report provides offset requirements for internal testing of different proposals to remove native vegetation. **This report DOES NOT support an application to remove, destroy or lop native vegetation under Clause 52.16 or 52.17 of planning schemes in Victoria.** A report must be obtained from the Department of Environment, Land, Water and Planning (DELWP).

Date of issue: 13/05/2019
 Time of issue: 8:52 am

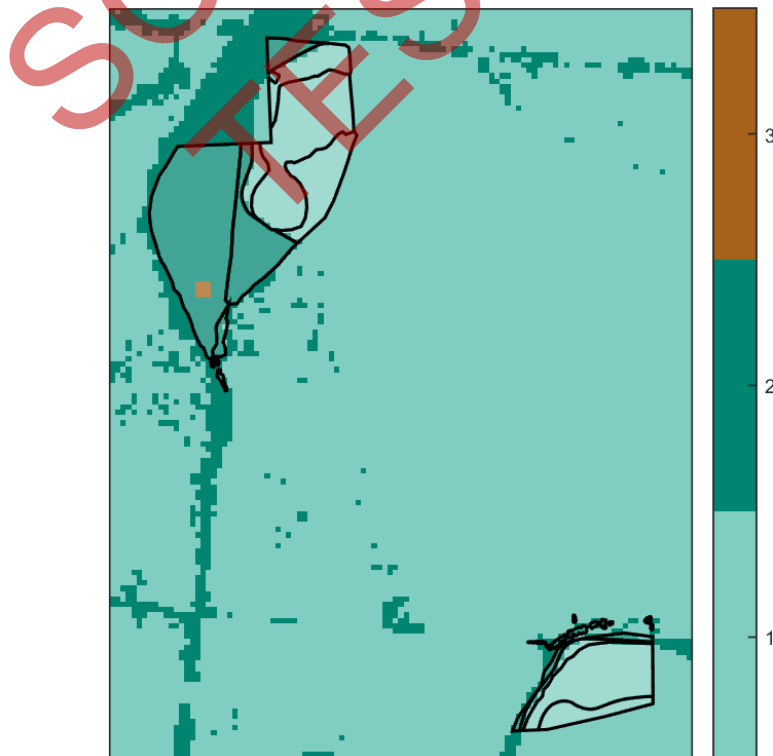
Report ID: Scenario Testing

Project ID	Indicative_vs_Revised_veg
------------	---------------------------

Assessment pathway

Assessment pathway	Detailed Assessment Pathway
Extent including past and proposed	94.723 ha
Extent of past removal	0.000 ha
Extent of proposed removal	94.723 ha
No. Large trees proposed to be removed	0
Location category of proposed removal	Location 3 The native vegetation is in an area where the removal of less than 0.5 hectares could have a significant impact on habitat for one or more rare or threatened species. The native vegetation is also in an area mapped as an endangered Ecological Vegetation Class (as per the statewide EVC map).

1. Location map



Scenario test – native vegetation removal

Offset requirements if a permit is granted

Any approval granted will include a condition to obtain an offset that meets the following requirements:

SCENARIO
TESTING

Scenario test – native vegetation removal

Species offset amount ¹	
	88.657 species units of habitat for Gull-billed Tern, <i>Gelochelidon nilotica macrotarsa</i>
	75.080 species units of habitat for Brolga, <i>Grus rubicunda</i>
	63.762 species units of habitat for Blue-billed Duck, <i>Oxyura australis</i>
	65.407 species units of habitat for Musk Duck, <i>Biziura lobata</i>
	65.424 species units of habitat for Striped Legless Lizard, <i>Delma impar</i>
	83.925 species units of habitat for Golden Sun Moth, <i>Synemon plana</i>
	78.083 species units of habitat for Hairy-pod Wattle, <i>Acacia glandulicarpa</i>
	78.083 species units of habitat for Rock Wattle, <i>Acacia rupicola</i>
	53.590 species units of habitat for Three-nerve Wattle, <i>Acacia trineura</i>
	78.033 species units of habitat for Bramble Wattle, <i>Acacia victoriae</i> subsp. <i>victoriae</i>
	78.000 species units of habitat for Swamp Sheoak, <i>Casuarina obesa</i>
	78.141 species units of habitat for Thorny Bitter-pea, <i>Daviesia pectinata</i>
	78.083 species units of habitat for Trailing Hop-bush, <i>Dodonaea procumbens</i>
	77.147 species units of habitat for Long Eryngium, <i>Eryngium paludosum</i>
	78.006 species units of habitat for Kamarooka Mallee, <i>Eucalyptus froggattii</i>
	78.097 species units of habitat for Small-leaf Goodenia, <i>Goodenia benthamiana</i>
	78.024 species units of habitat for Western Golden-tip, <i>Goodia medicaginea</i>
	77.742 species units of habitat for Erect Peppergrass, <i>Lepidium pseudopapillosum</i>
	77.964 species units of habitat for Small Monkey-flower, <i>Elacholoma prostrata</i>
	15.408 species units of habitat for Hoary Bush-pea, <i>Pultenaea daltonii</i>
	78.083 species units of habitat for Tiny Bog-sedge, <i>Schoenus nanus</i>
	77.975 species units of habitat for Downy Swainson-pea, <i>Swainsona swainsonioides</i>
	71.918 species units of habitat for Winged New Holland Daisy, <i>Vittadinia pterochaeta</i>
	58.430 species units of habitat for Yellow-tongue Daisy, <i>Brachyscome chrysoglossa</i>
	78.083 species units of habitat for Wimmera Mallee-box, <i>Eucalyptus wimmerensis</i>
	67.395 species units of habitat for Floodplain Rustyhood, <i>Pterostylis cheraphila</i>
	78.007 species units of habitat for Inland Pomaderris, <i>Pomaderris paniculosa</i> subsp. <i>paniculosa</i>
	78.083 species units of habitat for Fine-hairy Spear-grass, <i>Austrostipa puberula</i>
	34.509 species units of habitat for Western Sheoak, <i>Allocasuarina mackliniana</i> subsp. <i>hirtilinea</i>
	78.089 species units of habitat for Purple Blown-grass, <i>Lachnagrostis punicea</i> subsp. <i>punicea</i>
	78.141 species units of habitat for Jericho Wire-grass, <i>Aristida jerichoensis</i> var. <i>subspinulifera</i>
	60.512 species units of habitat for Spiny Rice-flower, <i>Pimelea spinescens</i> subsp. <i>spinescens</i>
	77.971 species units of habitat for Southern Swainson-pea, <i>Swainsona behriana</i>
	72.706 species units of habitat for Arching Flax-lily, <i>Dianella</i> sp. aff. <i>longifolia</i>

¹ The species offset amount(s) required is the sum of all species habitat units in Appendix 1.

Scenario test – native vegetation removal

	<i>(Benambra)</i> 27.276 species units of habitat for Wimmera Woodruff, <i>Asperula wimmerana</i> 75.294 species units of habitat for Pale Flax-lily, <i>Dianella sp. aff. longifolia</i> <i>(Riverina)</i>
Large trees	0 trees

NB: values within tables in this document may not add to the totals shown above due to rounding

Appendix 1 includes information about the native vegetation to be removed

Appendix 2 includes information about the rare or threatened species mapped at the site.

Appendix 3 includes maps showing native vegetation to be removed and extracts of relevant species habitat importance maps

Scenario test – native vegetation removal

Next steps

Any proposal to remove native vegetation must meet the application requirements of the Detailed Assessment Pathway and it will be assessed under the Detailed Assessment Pathway.

This report DOES NOT support an application to remove, destroy or lop native vegetation under Clause 52.16 or 52.17 of planning schemes in Victoria.

If you wish to remove the mapped native vegetation you must submit the related shapefiles to the Department of Environment, Land, Water and Planning (DELWP) for processing, by email to ensymnvrtool.support@delwp.vic.gov.au. DELWP will provide a *Native vegetation removal report* that is required to meet the permit application requirements in accordance with *Guidelines for the removal, destruction or lopping of native vegetation* (Guidelines).

SCENARIO
TESTING

Appendix 1: Description of native vegetation to be removed

The species-general offset test was applied to your proposal. This test determines if the proposed removal of native vegetation has a proportional impact on any rare or threatened species habitats above the species offset threshold. The threshold is set at 0.005 per cent of the mapped habitat value for a species. When the proportional impact is above the species offset threshold a species offset is required. This test is done for all species mapped at the site. Multiple species offsets will be required if the species offset threshold is exceeded for multiple species.

Where a zone requires species offset(s), the species habitat units for each species in that zone is calculated by the following equation in accordance with the Guidelines:

$$\text{Species habitat units} = \text{extent} \times \text{condition} \times \text{species landscape factor} \times 2, \text{ where the species landscape factor} = 0.5 + (\text{habitat importance score}/2)$$

The species offset amount(s) required is the sum of all species habitat units per zone

Where a zone does not require a species offset, the general habitat units in that zone is calculated by the following equation in accordance with the Guidelines:

$$\text{General habitat units} = \text{extent} \times \text{condition} \times \text{general landscape factor} \times 1.5, \text{ where the general landscape factor} = 0.5 + (\text{strategic biodiversity value score}/2)$$

The general offset amount required is the sum of all general habitat units per zone.

Native vegetation to be removed

Information provided by or on behalf of the applicant in a GIS file							Information calculated by EnSym					
Zone	Type	BioEVC	BioEVC conservation status	Large tree(s)	Partial removal	Condition score	Polygon Extent	Extent without overlap	SBV score	HI score	Habitat units	Offset type
1-a	Patch	wim_0125	Endangered	0	no	0.460	18.923	18.923	0.868	1.000	17.409	10111 Gull-billed Tern <i>Gelochelidon nilotica macrotarsa</i>
										0.606	13.976	10177 Brolga <i>Grus rubicunda</i>
										0.364	12.208	10216 Blue-billed Duck <i>Oxyura australis</i>
										0.431	12.531	10217 Musk Duck <i>Biziura lobata</i>
										0.530	13.320	12159 Striped Legless Lizard <i>Delma impar</i>
										0.786	15.544	15021 Golden Sun Moth <i>Synemon plana</i>
										0.668	14.523	500039 Hairy-pod Wattle <i>Acacia glandulicarpa</i>
										0.668	14.523	500082 Rock Wattle <i>Acacia rupicola</i>
										0.257	14.418	500096 Three-nerve Wattle <i>Acacia trineura</i>
										0.271	14.559	500101 Bramble Wattle <i>Acacia victoriae subsp. victoriae</i>

Information provided by or on behalf of the applicant in a GIS file							Information calculated by EnSym					
Zone	Type	BioEVC	BioEVC conservation status	Large tree(s)	Partial removal	Condition score	Polygon Extent	Extent without overlap	SBV score	HI score	Habitat units	Offset type
										0.668	14.523	500682 Swamp Sheoak <i>Casuarina obesa</i>
										0.668	14.523	500998 Thorny Bitter-pea <i>Daviesia pectinata</i>
										0.668	14.523	501090 Trailing Hop-bush <i>Dodonaea procumbens</i>
										0.668	14.523	501238 Long Eryngium <i>Eryngium paludosum</i>
										0.668	14.523	501279 Kamarooka Mallee <i>Eucalyptus froggattii</i>
										0.668	14.523	501493 Small-leaf Goodenia <i>Goodenia benthamiana</i>
										0.668	14.523	501518 Western Golden-tip <i>Goodia medicaginea</i>
										0.327	14.405	501909 Erect Peppercross <i>Lepidium pseudopapillosum</i>
										0.668	14.523	502196 Small Monkey-flower <i>Elacholoma prostrata</i>
										0.668	14.523	503050 Tiny Bog-sedge <i>Schoenus nanus</i>
										0.668	14.523	503328 Downy Swainson-pea <i>Swainsona swainsonioides</i>
										0.342	14.504	503542 Winged New Holland Daisy <i>Vittadinia pterochaeta</i>
										0.668	14.523	503654 Yellow-tongue Daisy <i>Brachyscome chrysoglossa</i>
										0.668	14.523	503721 Wimmera Mallee-box <i>Eucalyptus wimmerensis</i>
										0.293	14.649	503916 Floodplain Rustyhood <i>Pterostylis cheraphila</i>
										0.224	14.428	503943 Inland Pomaderris <i>Pomaderris paniculosa subsp. paniculosa</i>
										0.668	14.523	503988 Fine-hairy Spear-grass <i>Austrostipa puberula</i>

SCENARIO TESTING

Information provided by or on behalf of the applicant in a GIS file							Information calculated by EnSym					
Zone	Type	BioEVC	BioEVC conservation status	Large tree(s)	Partial removal	Condition score	Polygon Extent	Extent without overlap	SBV score	HI score	Habitat units	Offset type
										0.181	14.385	504203 Western Sheoak <i>Allocasuarina mackliniana</i> subsp. <i>hirtilinea</i>
										0.668	14.523	504206 Purple Blown-grass <i>Lachnagrostis punicea</i> subsp. <i>punicea</i>
										0.668	14.523	504631 Jericho Wire-grass <i>Aristida jerichoensis</i> var. <i>subspinulifera</i>
										0.374	14.503	504823 Spiny Rice-flower <i>Pimelea spinescens</i> subsp. <i>spinescens</i>
										0.668	14.523	504944 Southern Swainson-pea <i>Swainsona behriana</i>
										0.668	14.523	505560 Arching Flax-lily <i>Dianella</i> sp. aff. <i>longifolia</i> (<i>Benambra</i>)
										0.668	14.523	507399 Pale Flax-lily <i>Dianella</i> sp. aff. <i>longifolia</i> (<i>Riverina</i>)
1-b	Patch	wim_0803	Endangered	0	no	0.390	0.100	0.100	0.623	0.579	0.062	10177 Brolga <i>Grus rubicunda</i>
										0.725	0.068	15021 Golden Sun Moth <i>Synemon plana</i>
										0.539	0.060	500039 Hairy-pod Wattle <i>Acacia glandulicarpa</i>
										0.539	0.060	500082 Rock Wattle <i>Acacia rupicola</i>
										0.222	0.066	500682 Swamp Sheoak <i>Casuarina obesa</i>
										0.539	0.060	500998 Thorny Bitter-pea <i>Daviesia pectinata</i>
										0.539	0.060	501090 Trailing Hop-bush <i>Dodonaea procumbens</i>
										0.027	0.066	501279 Kamarooka Mallee <i>Eucalyptus froggattii</i>
										0.539	0.060	501493 Small-leaf Goodenia <i>Goodenia benthamiana</i>
										0.195	0.066	501518 Western Golden-tip <i>Goodia medicaginea</i>
										0.539	0.060	503050 Tiny Bog-sedge <i>Schoenus nanus</i>

Information provided by or on behalf of the applicant in a GIS file							Information calculated by EnSym					
Zone	Type	BioEVC	BioEVC conservation status	Large tree(s)	Partial removal	Condition score	Polygon Extent	Extent without overlap	SBV score	HI score	Habitat units	Offset type
										0.539	0.060	503721 Wimmera Mallee-box <i>Eucalyptus wimmerensis</i>
										0.344	0.058	503916 Floodplain Rustyhood <i>Pterostylis cheraphila</i>
										0.539	0.060	503943 Inland Pomaderris <i>Pomaderris paniculosa subsp. paniculosa</i>
										0.539	0.060	503988 Fine-hairy Spear-grass <i>Austrostipa puberula</i>
										0.539	0.060	504206 Purple Blown-grass <i>Lachnagrostis punicea subsp. punicea</i>
										0.214	0.066	504631 Jericho Wire-grass <i>Aristida jerichoensis var. subspinulifera</i>
										0.214	0.066	504823 Spiny Rice-flower <i>Pimelea spinescens subsp. spinescens</i>
1-k	Patch	wim_0803	Endangered	0	no	0.300	0.037	0.037	0.260	0.640	0.018	15021 Golden Sun Moth <i>Synemon plana</i>
										0.460	0.016	500039 Hairy-pod Wattle <i>Acacia glandulicarpa</i>
										0.460	0.016	500082 Rock Wattle <i>Acacia rupicola</i>
										0.460	0.016	500096 Three-nerve Wattle <i>Acacia trineura</i>
										0.460	0.016	500101 Bramble Wattle <i>Acacia victoriae subsp. victoriae</i>
										0.460	0.016	500682 Swamp Sheoak <i>Casuarina obesa</i>
										0.460	0.016	500998 Thorny Bitter-pea <i>Daviesia pectinata</i>
										0.460	0.016	501090 Trailing Hop-bush <i>Dodonaea procumbens</i>
										0.460	0.016	501238 Long Eryngium <i>Eryngium paludosum</i>
										0.460	0.016	501279 Kamarooka Mallee <i>Eucalyptus froggattii</i>
										0.460	0.016	501493 Small-leaf Goodenia <i>Goodenia benthamiana</i>

Information provided by or on behalf of the applicant in a GIS file							Information calculated by EnSym					
Zone	Type	BioEVC	BioEVC conservation status	Large tree(s)	Partial removal	Condition score	Polygon Extent	Extent without overlap	SBV score	HI score	Habitat units	Offset type
										0.460	0.016	501518 Western Golden-tip <i>Goodia medicaginea</i>
										0.460	0.016	501909 Erect Peppercross <i>Lepidium pseudopapillosum</i>
										0.460	0.016	502196 Small Monkey-flower <i>Elacholoma prostrata</i>
										0.460	0.016	503050 Tiny Bog-sedge <i>Schoenus nanus</i>
										0.460	0.016	503328 Downy Swainson-pea <i>Swainsona swainsonioides</i>
										0.460	0.016	503542 Winged New Holland Daisy <i>Vittadinia pterochaeta</i>
										0.460	0.016	503721 Wimmera Mallee-box <i>Eucalyptus wimmerensis</i>
										0.460	0.016	503943 Inland Pomaderris <i>Pomaderris paniculosa subsp. paniculosa</i>
										0.460	0.016	503988 Fine-hairy Spear-grass <i>Austrostipa puberula</i>
										0.460	0.016	504206 Purple Blown-grass <i>Lachnagrostis punicea subsp. punicea</i>
										0.460	0.016	504631 Jericho Wire-grass <i>Aristida jerichoensis var. subspinulifera</i>
										0.460	0.016	504823 Spiny Rice-flower <i>Pimelea spinescens subsp. spinescens</i>
										0.460	0.016	504944 Southern Swainson-pea <i>Swainsona behriana</i>
										0.460	0.016	505560 Arching Flax-lily <i>Dianella sp. aff. longifolia (Benambra)</i>
1-l	Patch	wim_0292	Vulnerable	0	no	0.320	0.016	0.016	0.252	0.640	0.008	15021 Golden Sun Moth <i>Synemon plana</i>
										0.279	0.007	500039 Hairy-pod Wattle <i>Acacia glandulicarpa</i>
										0.279	0.007	500082 Rock Wattle <i>Acacia rupicola</i>

Information provided by or on behalf of the applicant in a GIS file							Information calculated by EnSym					
Zone	Type	BioEVC	BioEVC conservation status	Large tree(s)	Partial removal	Condition score	Polygon Extent	Extent without overlap	SBV score	HI score	Habitat units	Offset type
										0.279	0.007	500096 Three-nerve Wattle <i>Acacia trineura</i>
										0.279	0.007	500101 Bramble Wattle <i>Acacia victoriae subsp. victoriae</i>
										0.279	0.007	500682 Swamp Sheoak <i>Casuarina obesa</i>
										0.279	0.007	500998 Thorny Bitter-pea <i>Daviesia pectinata</i>
										0.279	0.007	501090 Trailing Hop-bush <i>Dodonaea procumbens</i>
										0.279	0.007	501238 Long Eryngium <i>Eryngium paludosum</i>
										0.279	0.007	501279 Kamarooka Mallee <i>Eucalyptus froggattii</i>
										0.279	0.007	501493 Small-leaf Goodenia <i>Goodenia benthamiana</i>
										0.279	0.007	501518 Western Golden-tip <i>Goodia medicaginea</i>
										0.279	0.007	501909 Erect Peppercress <i>Lepidium pseudopapillosum</i>
										0.279	0.007	502196 Small Monkey-flower <i>Elacholoma prostrata</i>
										0.279	0.007	503050 Tiny Bog-sedge <i>Schoenus nanus</i>
										0.279	0.007	503328 Downy Swainson-pea <i>Swainsona swainsonioides</i>
										0.279	0.007	503542 Winged New Holland Daisy <i>Vittadinia pterochaeta</i>
										0.279	0.007	503721 Wimmera Mallee-box <i>Eucalyptus wimmerensis</i>
										0.279	0.007	503943 Inland Pomaderris <i>Pomaderris paniculosa subsp. paniculosa</i>
										0.279	0.007	503988 Fine-hairy Spear-grass <i>Austrostipa puberula</i>

SCENARIO TESTING

Information provided by or on behalf of the applicant in a GIS file							Information calculated by EnSym					
Zone	Type	BioEVC	BioEVC conservation status	Large tree(s)	Partial removal	Condition score	Polygon Extent	Extent without overlap	SBV score	HI score	Habitat units	Offset type
										0.279	0.007	504206 Purple Blown-grass <i>Lachnagrostis punicea</i> subsp. <i>punicea</i>
										0.279	0.007	504631 Jericho Wire-grass <i>Aristida jerichoensis</i> var. <i>subspinulifera</i>
										0.279	0.007	504823 Spiny Rice-flower <i>Pimelea spinescens</i> subsp. <i>spinescens</i>
										0.279	0.007	504944 Southern Swainson-pea <i>Swainsona behriana</i>
										0.279	0.007	505560 Arching Flax-lily <i>Dianella</i> sp. aff. <i>longifolia</i> (<i>Benambra</i>)
1-m	Patch	wim_0803	Endangered	0	no	0.310	0.031	0.031	0.261	0.692	0.016	15021 Golden Sun Moth <i>Synemon plana</i>
										0.587	0.015	500039 Hairy-pod Wattle <i>Acacia glandulicarpa</i>
										0.587	0.015	500082 Rock Wattle <i>Acacia rupicola</i>
										0.587	0.015	500096 Three-nerve Wattle <i>Acacia trineura</i>
										0.585	0.015	500101 Bramble Wattle <i>Acacia victoriae</i> subsp. <i>victoriae</i>
										0.587	0.015	500682 Swamp Sheoak <i>Casuarina obesa</i>
										0.587	0.015	500998 Thorny Bitter-pea <i>Daviesia pectinata</i>
										0.587	0.015	501090 Trailing Hop-bush <i>Dodonaea procumbens</i>
										0.587	0.015	501238 Long Eryngium <i>Eryngium paludosum</i>
										0.587	0.015	501279 Kamarooka Mallee <i>Eucalyptus froggattii</i>
										0.587	0.015	501493 Small-leaf Goodenia <i>Goodenia benthamiana</i>
										0.587	0.015	501518 Western Golden-tip <i>Goodia medicaginea</i>
										0.585	0.015	501909 Erect Peppercress <i>Lepidium pseudopapillosum</i>

Information provided by or on behalf of the applicant in a GIS file							Information calculated by EnSym					
Zone	Type	BioEVC	BioEVC conservation status	Large tree(s)	Partial removal	Condition score	Polygon Extent	Extent without overlap	SBV score	HI score	Habitat units	Offset type
										0.587	0.015	502196 Small Monkey-flower <i>Elacholoma prostrata</i>
										0.587	0.015	503050 Tiny Bog-sedge <i>Schoenus nanus</i>
										0.585	0.015	503328 Downy Swainson-pea <i>Swainsona swainsonioides</i>
										0.585	0.015	503542 Winged New Holland Daisy <i>Vittadinia pterochaeta</i>
										0.587	0.015	503721 Wimmera Mallee-box <i>Eucalyptus wimmerensis</i>
										0.587	0.015	503943 Inland Pomaderris <i>Pomaderris paniculosa subsp. paniculosa</i>
										0.587	0.015	503988 Fine-hairy Spear-grass <i>Austrostipa puberula</i>
										0.587	0.015	504206 Purple Blown-grass <i>Lachnagrostis punicea subsp. punicea</i>
										0.587	0.015	504631 Jericho Wire-grass <i>Aristida jerichoensis var. subspinulifera</i>
										0.117	0.014	504823 Spiny Rice-flower <i>Pimelea spinescens subsp. spinescens</i>
										0.587	0.015	504944 Southern Swainson-pea <i>Swainsona behriana</i>
										0.585	0.015	505560 Arching Flax-lily <i>Dianella sp. aff. longifolia (Benambra)</i>
1-n	Patch	wim_0292	Vulnerable	0	no	0.360	0.454	0.454	0.396	0.580	0.258	10177 Brolga <i>Grus rubicunda</i>
										0.087	0.232	12159 Striped Legless Lizard <i>Delma impar</i>
										0.539	0.280	15021 Golden Sun Moth <i>Synemon plana</i>
										0.609	0.263	500039 Hairy-pod Wattle <i>Acacia glandulicarpa</i>
										0.609	0.263	500082 Rock Wattle <i>Acacia rupicola</i>

Information provided by or on behalf of the applicant in a GIS file							Information calculated by EnSym					
Zone	Type	BioEVC	BioEVC conservation status	Large tree(s)	Partial removal	Condition score	Polygon Extent	Extent without overlap	SBV score	HI score	Habitat units	Offset type
										0.609	0.263	500096 Three-nerve Wattle <i>Acacia trineura</i>
										0.609	0.263	500101 Bramble Wattle <i>Acacia victoriae subsp. victoriae</i>
										0.609	0.263	500682 Swamp Sheoak <i>Casuarina obesa</i>
										0.609	0.263	500998 Thorny Bitter-pea <i>Daviesia pectinata</i>
										0.609	0.263	501090 Trailing Hop-bush <i>Dodonaea procumbens</i>
										0.609	0.263	501238 Long Eryngium <i>Eryngium paludosum</i>
										0.609	0.263	501279 Kamarooka Mallee <i>Eucalyptus froggattii</i>
										0.609	0.263	501493 Small-leaf Goodenia <i>Goodenia benthamiana</i>
										0.609	0.263	501518 Western Golden-tip <i>Goodia medicaginea</i>
										0.609	0.263	501909 Erect Peppercress <i>Lepidium pseudopapillosum</i>
										0.609	0.263	502196 Small Monkey-flower <i>Elacholoma prostrata</i>
										0.609	0.263	503050 Tiny Bog-sedge <i>Schoenus nanus</i>
										0.609	0.263	503328 Downy Swainson-pea <i>Swainsona swainsonioides</i>
										0.609	0.263	503542 Winged New Holland Daisy <i>Vittadinia pterochaeta</i>
										0.609	0.263	503721 Wimmera Mallee-box <i>Eucalyptus wimmerensis</i>
										0.609	0.263	503943 Inland Pomaderris <i>Pomaderris paniculosa subsp. paniculosa</i>
										0.609	0.263	503988 Fine-hairy Spear-grass <i>Austrostipa puberula</i>

SCENARIO TESTING

Information provided by or on behalf of the applicant in a GIS file							Information calculated by EnSym					
Zone	Type	BioEVC	BioEVC conservation status	Large tree(s)	Partial removal	Condition score	Polygon Extent	Extent without overlap	SBV score	HI score	Habitat units	Offset type
										0.609	0.263	504206 Purple Blown-grass <i>Lachnagrostis punicea</i> subsp. <i>punicea</i>
										0.609	0.263	504631 Jericho Wire-grass <i>Aristida jerichoensis</i> var. <i>subspinulifera</i>
										0.609	0.263	504944 Southern Swainson-pea <i>Swainsona behriana</i>
										0.609	0.263	505560 Arching Flax-lily <i>Dianella</i> sp. aff. <i>longifolia</i> (<i>Benambra</i>)
1-o	Patch	wim_0292	Vulnerable	0	no	0.320	0.036	0.036	0.260	0.550	0.018	500039 Hairy-pod Wattle <i>Acacia glandulicarpa</i>
										0.372	0.018	500082 Rock Wattle <i>Acacia rupicola</i>
										0.372	0.018	500096 Three-nerve Wattle <i>Acacia trineura</i>
										0.372	0.018	500101 Bramble Wattle <i>Acacia victoriae</i> subsp. <i>victoriae</i>
										0.372	0.018	500682 Swamp Sheoak <i>Casuarina obesa</i>
										0.372	0.018	500998 Thorny Bitter-pea <i>Daviesia pectinata</i>
										0.372	0.018	501090 Trailing Hop-bush <i>Dodonaea procumbens</i>
										0.372	0.018	501238 Long Eryngium <i>Eryngium paludosum</i>
										0.372	0.018	501279 Kamarooka Mallee <i>Eucalyptus froggattii</i>
										0.372	0.018	501493 Small-leaf Goodenia <i>Goodenia benthamiana</i>
										0.372	0.018	501518 Western Golden-tip <i>Goodia medicaginea</i>
										0.372	0.018	501909 Erect Peppercress <i>Lepidium pseudopapillosum</i>
										0.372	0.018	502196 Small Monkey-flower <i>Elacholoma prostrata</i>
										0.372	0.018	503050 Tiny Bog-sedge <i>Schoenus nanus</i>

SCENARIO TESTING

Information provided by or on behalf of the applicant in a GIS file							Information calculated by EnSym					
Zone	Type	BioEVC	BioEVC conservation status	Large tree(s)	Partial removal	Condition score	Polygon Extent	Extent without overlap	SBV score	HI score	Habitat units	Offset type
										0.372	0.018	503328 Downy Swainson-pea <i>Swainsona swainsonioides</i>
										0.372	0.018	503542 Winged New Holland Daisy <i>Vittadinia pterochaeta</i>
										0.372	0.018	503721 Wimmera Mallee-box <i>Eucalyptus wimmerensis</i>
										0.372	0.018	503943 Inland Pomaderris <i>Pomaderris paniculosa subsp. paniculosa</i>
										0.372	0.018	503988 Fine-hairy Spear-grass <i>Austrostipa puberula</i>
										0.372	0.018	504206 Purple Blown-grass <i>Lachnagrostis punicea subsp. punicea</i>
										0.372	0.018	504631 Jericho Wire-grass <i>Aristida jerichoensis var. subspinulifera</i>
										0.372	0.018	504944 Southern Swainson-pea <i>Swainsona behriana</i>
										0.372	0.018	505560 Arching Flax-lily <i>Dianella sp. aff. longifolia (Benambra)</i>
1-p	Patch	wim_0803	Endangered	0	no	0.310	0.079	0.079	0.870	0.700	0.042	15021 Golden Sun Moth <i>Synemon plana</i>
										0.547	0.038	500039 Hairy-pod Wattle <i>Acacia glandulicarpa</i>
										0.547	0.038	500082 Rock Wattle <i>Acacia rupicola</i>
										0.547	0.038	500096 Three-nerve Wattle <i>Acacia trineura</i>
										0.547	0.038	500101 Bramble Wattle <i>Acacia victoriae subsp. victoriae</i>
										0.547	0.038	500682 Swamp Sheoak <i>Casuarina obesa</i>
										0.547	0.038	500998 Thorny Bitter-pea <i>Daviesia pectinata</i>
										0.547	0.038	501090 Trailing Hop-bush <i>Dodonaea procumbens</i>

Information provided by or on behalf of the applicant in a GIS file							Information calculated by EnSym					
Zone	Type	BioEVC	BioEVC conservation status	Large tree(s)	Partial removal	Condition score	Polygon Extent	Extent without overlap	SBV score	HI score	Habitat units	Offset type
										0.547	0.038	501238 Long Eryngium <i>Eryngium paludosum</i>
										0.547	0.038	501279 Kamarooka Mallee <i>Eucalyptus froggattii</i>
										0.547	0.038	501493 Small-leaf Goodenia <i>Goodenia benthamiana</i>
										0.547	0.038	501518 Western Golden-tip <i>Goodia medicaginea</i>
										0.547	0.038	501909 Erect Peppercross <i>Lepidium pseudopapillosum</i>
										0.547	0.038	502196 Small Monkey-flower <i>Elacholoma prostrata</i>
										0.547	0.038	503050 Tiny Bog-sedge <i>Schoenus nanus</i>
										0.547	0.038	503328 Downy Swainson-pea <i>Swainsona swainsonioides</i>
										0.547	0.038	503542 Winged New Holland Daisy <i>Vittadinia pterochaeta</i>
										0.547	0.038	503721 Wimmera Mallee-box <i>Eucalyptus wimmerensis</i>
										0.547	0.038	503943 Inland Pomaderris <i>Pomaderris paniculosa subsp. paniculosa</i>
										0.547	0.038	503988 Fine-hairy Spear-grass <i>Austrostipa puberula</i>
										0.547	0.038	504206 Purple Blown-grass <i>Lachnagrostis punicea subsp. punicea</i>
										0.547	0.038	504631 Jericho Wire-grass <i>Aristida jerichoensis var. subspinulifera</i>
										0.547	0.038	504944 Southern Swainson-pea <i>Swainsona behriana</i>
										0.547	0.038	505560 Arching Flax-lily <i>Dianella sp. aff. longifolia (Benambra)</i>
1-q	Patch	wim_0292	Vulnerable	0	no	0.320	0.002	0.002	0.870	0.700	0.001	15021 Golden Sun Moth <i>Synemon plana</i>

Information provided by or on behalf of the applicant in a GIS file							Information calculated by EnSym					
Zone	Type	BioEVC	BioEVC conservation status	Large tree(s)	Partial removal	Condition score	Polygon Extent	Extent without overlap	SBV score	HI score	Habitat units	Offset type
										0.559	0.001	500039 Hairy-pod Wattle <i>Acacia glandulicarpa</i>
										0.559	0.001	500082 Rock Wattle <i>Acacia rupicola</i>
										0.559	0.001	500096 Three-nerve Wattle <i>Acacia trineura</i>
										0.559	0.001	500101 Bramble Wattle <i>Acacia victoriae</i> subsp. <i>victoriae</i>
										0.559	0.001	500682 Swamp Sheoak <i>Casuarina obesa</i>
										0.559	0.001	500998 Thorny Bitter-pea <i>Daviesia pectinata</i>
										0.559	0.001	501090 Trailing Hop-bush <i>Dodonaea procumbens</i>
										0.559	0.001	501238 Long Eryngium <i>Eryngium paludosum</i>
										0.559	0.001	501279 Kamarooka Mallee <i>Eucalyptus froggattii</i>
										0.559	0.001	501493 Small-leaf Goodenia <i>Goodenia benthamiana</i>
										0.559	0.001	501518 Western Golden-tip <i>Goodia medicaginea</i>
										0.559	0.001	501909 Erect Peppercross <i>Lepidium pseudopapillosum</i>
										0.559	0.001	502196 Small Monkey-flower <i>Elacholoma prostrata</i>
										0.559	0.001	503050 Tiny Bog-sedge <i>Schoenus nanus</i>
										0.559	0.001	503328 Downy Swainson-pea <i>Swainsona swainsonioides</i>
										0.559	0.001	503542 Winged New Holland Daisy <i>Vittadinia pterochaeta</i>
										0.559	0.001	503721 Wimmera Mallee-box <i>Eucalyptus wimmerensis</i>
										0.559	0.001	503943 Inland Pomaderris <i>Pomaderris paniculosa</i> subsp. <i>paniculosa</i>

SCENARIO TESTING

Information provided by or on behalf of the applicant in a GIS file							Information calculated by EnSym					
Zone	Type	BioEVC	BioEVC conservation status	Large tree(s)	Partial removal	Condition score	Polygon Extent	Extent without overlap	SBV score	HI score	Habitat units	Offset type
										0.559	0.001	503988 Fine-hairy Spear-grass <i>Austrostipa puberula</i>
										0.559	0.001	504206 Purple Blown-grass <i>Lachnagrostis punicea</i> subsp. <i>punicea</i>
										0.559	0.001	504631 Jericho Wire-grass <i>Aristida jerichoensis</i> var. <i>subspinulifera</i>
										0.559	0.001	504944 Southern Swainson-pea <i>Swainsona behriana</i>
										0.559	0.001	505560 Arching Flax-lily <i>Dianella</i> sp. aff. <i>longifolia</i> (<i>Benambra</i>)
1-r	Patch	wim_0292	Vulnerable	0	no	0.320	0.005	0.005	0.870	0.490	0.002	500039 Hairy-pod Wattle <i>Acacia glandulicarpa</i>
										0.490	0.002	500082 Rock Wattle <i>Acacia rupicola</i>
										0.490	0.002	500096 Three-nerve Wattle <i>Acacia trineura</i>
										0.490	0.002	500101 Bramble Wattle <i>Acacia victoriae</i> subsp. <i>victoriae</i>
										0.490	0.002	500682 Swamp Sheoak <i>Casuarina obesa</i>
										0.490	0.002	500998 Thorny Bitter-pea <i>Daviesia pectinata</i>
										0.490	0.002	501090 Trailing Hop-bush <i>Dodonaea procumbens</i>
										0.490	0.002	501238 Long Eryngium <i>Eryngium paludosum</i>
										0.490	0.002	501279 Kamarooka Mallee <i>Eucalyptus froggattii</i>
										0.490	0.002	501493 Small-leaf Goodenia <i>Goodenia benthamiana</i>
										0.490	0.002	501518 Western Golden-tip <i>Goodia medicaginea</i>
										0.490	0.002	501909 Erect Peppercross <i>Lepidium pseudopapillosum</i>

Information provided by or on behalf of the applicant in a GIS file							Information calculated by EnSym					
Zone	Type	BioEVC	BioEVC conservation status	Large tree(s)	Partial removal	Condition score	Polygon Extent	Extent without overlap	SBV score	HI score	Habitat units	Offset type
										0.490	0.002	502196 Small Monkey-flower <i>Elacholoma prostrata</i>
										0.490	0.002	503050 Tiny Bog-sedge <i>Schoenus nanus</i>
										0.490	0.002	503328 Downy Swainson-pea <i>Swainsona swainsonioides</i>
										0.490	0.002	503542 Winged New Holland Daisy <i>Vittadinia pterochaeta</i>
										0.490	0.002	503721 Wimmera Mallee-box <i>Eucalyptus wimmerensis</i>
										0.490	0.002	503943 Inland Pomaderris <i>Pomaderris paniculosa subsp. paniculosa</i>
										0.490	0.002	503988 Fine-hairy Spear-grass <i>Austrostipa puberula</i>
										0.490	0.002	504206 Purple Blown-grass <i>Lachnagrostis punicea subsp. punicea</i>
										0.490	0.002	504631 Jericho Wire-grass <i>Aristida jerichoensis var. subspinulifera</i>
										0.490	0.002	504944 Southern Swainson-pea <i>Swainsona behriana</i>
										0.490	0.002	505560 Arching Flax-lily <i>Dianella sp. aff. longifolia (Benambra)</i>
1-s	Patch	wim_0803	Endangered	0	no	0.310	0.081	0.081	0.870	0.490	0.037	500039 Hairy-pod Wattle <i>Acacia glandulicarpa</i>
										0.490	0.037	500082 Rock Wattle <i>Acacia rupicola</i>
										0.490	0.037	500096 Three-nerve Wattle <i>Acacia trineura</i>
										0.490	0.037	500101 Bramble Wattle <i>Acacia victoriae subsp. victoriae</i>
										0.490	0.037	500682 Swamp Sheoak <i>Casuarina obesa</i>
										0.490	0.037	500998 Thorny Bitter-pea <i>Daviesia pectinata</i>

Information provided by or on behalf of the applicant in a GIS file							Information calculated by EnSym					
Zone	Type	BioEVC	BioEVC conservation status	Large tree(s)	Partial removal	Condition score	Polygon Extent	Extent without overlap	SBV score	HI score	Habitat units	Offset type
										0.490	0.037	501090 Trailing Hop-bush <i>Dodonaea procumbens</i>
										0.490	0.037	501238 Long Eryngium <i>Eryngium paludosum</i>
										0.490	0.037	501279 Kamarooka Mallee <i>Eucalyptus froggattii</i>
										0.490	0.037	501493 Small-leaf Goodenia <i>Goodenia benthamiana</i>
										0.490	0.037	501518 Western Golden-tip <i>Goodia medicaginea</i>
										0.490	0.037	501909 Erect Peppercross <i>Lepidium pseudopapillosum</i>
										0.490	0.037	502196 Small Monkey-flower <i>Elacholoma prostrata</i>
										0.490	0.037	503050 Tiny Bog-sedge <i>Schoenus nanus</i>
										0.490	0.037	503328 Downy Swainson-pea <i>Swainsona swainsonioides</i>
										0.490	0.037	503542 Winged New Holland Daisy <i>Vittadinia pterochaeta</i>
										0.490	0.037	503721 Wimmera Mallee-box <i>Eucalyptus wimmerensis</i>
										0.490	0.037	503943 Inland Pomaderris <i>Pomaderris paniculosa subsp. paniculosa</i>
										0.490	0.037	503988 Fine-hairy Spear-grass <i>Austrostipa puberula</i>
										0.490	0.037	504206 Purple Blown-grass <i>Lachnagrostis punicea subsp. punicea</i>
										0.490	0.037	504631 Jericho Wire-grass <i>Aristida jerichoensis var. subspinulifera</i>
										0.490	0.037	504944 Southern Swainson-pea <i>Swainsona behriana</i>

SCENARIO TESTING

Information provided by or on behalf of the applicant in a GIS file							Information calculated by EnSym					
Zone	Type	BioEVC	BioEVC conservation status	Large tree(s)	Partial removal	Condition score	Polygon Extent	Extent without overlap	SBV score	HI score	Habitat units	Offset type
										0.490	0.037	505560 Arching Flax-lily <i>Dianella sp. aff. longifolia</i> (Benambra)
1-t	Patch	wim_0803	Endangered	0	no	0.310	0.056	0.056	0.790	0.690	0.030	15021 Golden Sun Moth <i>Synemon plana</i>
										0.380	0.024	500039 Hairy-pod Wattle <i>Acacia glandulicarpa</i>
										0.380	0.024	500082 Rock Wattle <i>Acacia rupicola</i>
										0.380	0.024	500096 Three-nerve Wattle <i>Acacia trineura</i>
										0.380	0.024	500101 Bramble Wattle <i>Acacia victoriae subsp. victoriae</i>
										0.380	0.024	500682 Swamp Sheoak <i>Casuarina obesa</i>
										0.380	0.024	500998 Thorny Bitter-pea <i>Daviesia pectinata</i>
										0.380	0.024	501090 Trailing Hop-bush <i>Dodonaea procumbens</i>
										0.380	0.024	501238 Long Eryngium <i>Eryngium paludosum</i>
										0.380	0.024	501279 Kamarooka Mallee <i>Eucalyptus froggattii</i>
										0.380	0.024	501493 Small-leaf Goodenia <i>Goodenia benthamiana</i>
										0.380	0.024	501518 Western Golden-tip <i>Goodia medicaginea</i>
										0.380	0.024	501909 Erect Peppercross <i>Lepidium pseudopapillosum</i>
										0.380	0.024	502196 Small Monkey-flower <i>Elacholoma prostrata</i>
										0.380	0.024	503050 Tiny Bog-sedge <i>Schoenus nanus</i>
										0.380	0.024	503328 Downy Swainson-pea <i>Swainsona swainsonioides</i>
										0.380	0.024	503542 Winged New Holland Daisy <i>Vittadinia pterochaeta</i>

Information provided by or on behalf of the applicant in a GIS file							Information calculated by EnSym					
Zone	Type	BioEVC	BioEVC conservation status	Large tree(s)	Partial removal	Condition score	Polygon Extent	Extent without overlap	SBV score	HI score	Habitat units	Offset type
										0.380	0.024	503721 Wimmera Mallee-box <i>Eucalyptus wimmerensis</i>
										0.380	0.024	503943 Inland Pomaderris <i>Pomaderris paniculosa</i> subsp. <i>paniculosa</i>
										0.380	0.024	503988 Fine-hairy Spear-grass <i>Austrostipa puberula</i>
										0.380	0.024	504206 Purple Blown-grass <i>Lachnagrostis punicea</i> subsp. <i>punicea</i>
										0.380	0.024	504631 Jericho Wire-grass <i>Aristida jerichoensis</i> var. <i>subspinulifera</i>
										0.380	0.024	504944 Southern Swainson-pea <i>Swainsona behriana</i>
										0.380	0.024	505560 Arching Flax-lily <i>Dianella</i> sp. aff. <i>longifolia</i> (<i>Benambra</i>)
1-u	Patch	wim_0292	Vulnerable	0	no	0.320	0.010	0.010	0.790	0.690	0.005	15021 Golden Sun Moth <i>Synemon plana</i>
										0.344	0.004	500039 Hairy-pod Wattle <i>Acacia glandulicarpa</i>
										0.344	0.004	500082 Rock Wattle <i>Acacia rupicola</i>
										0.153	0.004	500096 Three-nerve Wattle <i>Acacia trineura</i>
										0.344	0.004	500101 Bramble Wattle <i>Acacia victoriae</i> subsp. <i>victoriae</i>
										0.344	0.004	500682 Swamp Sheoak <i>Casuarina obesa</i>
										0.344	0.004	500998 Thorny Bitter-pea <i>Daviesia pectinata</i>
										0.344	0.004	501090 Trailing Hop-bush <i>Dodonaea procumbens</i>
										0.344	0.004	501238 Long Eryngium <i>Eryngium paludosum</i>
										0.344	0.004	501279 Kamarooka Mallee <i>Eucalyptus froggattii</i>
										0.344	0.004	501493 Small-leaf Goodenia <i>Goodenia benthamiana</i>

Information provided by or on behalf of the applicant in a GIS file							Information calculated by EnSym					
Zone	Type	BioEVC	BioEVC conservation status	Large tree(s)	Partial removal	Condition score	Polygon Extent	Extent without overlap	SBV score	HI score	Habitat units	Offset type
										0.344	0.004	501518 Western Golden-tip <i>Goodia medicaginea</i>
										0.344	0.004	501909 Erect Peppercross <i>Lepidium pseudopapillosum</i>
										0.344	0.004	502196 Small Monkey-flower <i>Elacholoma prostrata</i>
										0.344	0.004	503050 Tiny Bog-sedge <i>Schoenus nanus</i>
										0.344	0.004	503328 Downy Swainson-pea <i>Swainsona swainsonioides</i>
										0.344	0.004	503542 Winged New Holland Daisy <i>Vittadinia pterochaeta</i>
										0.344	0.004	503721 Wimmera Mallee-box <i>Eucalyptus wimmerensis</i>
										0.344	0.004	503943 Inland Pomaderris <i>Pomaderris paniculosa subsp. paniculosa</i>
										0.344	0.004	503988 Fine-hairy Spear-grass <i>Austrostipa puberula</i>
										0.344	0.004	504206 Purple Blown-grass <i>Lachnagrostis punicea subsp. punicea</i>
										0.344	0.004	504631 Jericho Wire-grass <i>Aristida jerichoensis var. subspinulifera</i>
										0.344	0.004	504944 Southern Swainson-pea <i>Swainsona behriana</i>
										0.153	0.004	505560 Arching Flax-lily <i>Dianella sp. aff. longifolia (Benambra)</i>
1-v	Patch	wim_0803	Endangered	0	no	0.310	0.023	0.023	0.870	0.477	0.010	500039 Hairy-pod Wattle <i>Acacia glandulicarpa</i>
										0.477	0.010	500082 Rock Wattle <i>Acacia rupicola</i>
										0.477	0.010	500096 Three-nerve Wattle <i>Acacia trineura</i>
										0.477	0.010	500101 Bramble Wattle <i>Acacia victoriae subsp. victoriae</i>

Information provided by or on behalf of the applicant in a GIS file							Information calculated by EnSym					
Zone	Type	BioEVC	BioEVC conservation status	Large tree(s)	Partial removal	Condition score	Polygon Extent	Extent without overlap	SBV score	HI score	Habitat units	Offset type
										0.477	0.010	500682 Swamp Sheoak <i>Casuarina obesa</i>
										0.442	0.011	500998 Thorny Bitter-pea <i>Daviesia pectinata</i>
										0.477	0.010	501090 Trailing Hop-bush <i>Dodonaea procumbens</i>
										0.477	0.010	501238 Long Eryngium <i>Eryngium paludosum</i>
										0.477	0.010	501279 Kamarooka Mallee <i>Eucalyptus froggattii</i>
										0.477	0.010	501493 Small-leaf Goodenia <i>Goodenia benthamiana</i>
										0.477	0.010	501518 Western Golden-tip <i>Goodia medicaginea</i>
										0.477	0.010	501909 Erect Peppercress <i>Lepidium pseudopapillosum</i>
										0.477	0.010	502196 Small Monkey-flower <i>Elacholoma prostrata</i>
										0.477	0.010	503050 Tiny Bog-sedge <i>Schoenus nanus</i>
										0.477	0.010	503328 Downy Swainson-pea <i>Swainsona swainsonioides</i>
										0.477	0.010	503542 Winged New Holland Daisy <i>Vittadinia pterochaeta</i>
										0.477	0.010	503721 Wimmera Mallee-box <i>Eucalyptus wimmerensis</i>
										0.477	0.010	503943 Inland Pomaderris <i>Pomaderris paniculosa subsp. paniculosa</i>
										0.477	0.010	503988 Fine-hairy Spear-grass <i>Austrostipa puberula</i>
										0.477	0.010	504206 Purple Blown-grass <i>Lachnagrostis punicea subsp. punicea</i>
										0.477	0.010	504631 Jericho Wire-grass <i>Aristida jerichoensis var. subspinulifera</i>

SCENARIO TESTING

Information provided by or on behalf of the applicant in a GIS file							Information calculated by EnSym					
Zone	Type	BioEVC	BioEVC conservation status	Large tree(s)	Partial removal	Condition score	Polygon Extent	Extent without overlap	SBV score	HI score	Habitat units	Offset type
										0.477	0.010	504944 Southern Swainson-pea <i>Swainsona behriana</i>
										0.477	0.010	505560 Arching Flax-lily <i>Dianella sp. aff. longifolia (Benambra)</i>
1-y	Patch	wim_0803	Endangered	0	no	0.310	0.020	0.020	0.790	0.690	0.011	15021 Golden Sun Moth <i>Synemon plana</i>
										0.380	0.009	500039 Hairy-pod Wattle <i>Acacia glandulicarpa</i>
										0.380	0.009	500082 Rock Wattle <i>Acacia rupicola</i>
										0.380	0.009	500096 Three-nerve Wattle <i>Acacia trineura</i>
										0.380	0.009	500101 Bramble Wattle <i>Acacia victoriae subsp. victoriae</i>
										0.380	0.009	500682 Swamp Sheoak <i>Casuarina obesa</i>
										0.380	0.009	500998 Thorny Bitter-pea <i>Daviesia pectinata</i>
										0.380	0.009	501090 Trailing Hop-bush <i>Dodonaea procumbens</i>
										0.380	0.009	501238 Long Eryngium <i>Eryngium paludosum</i>
										0.380	0.009	501279 Kamarooka Mallee <i>Eucalyptus froggattii</i>
										0.380	0.009	501493 Small-leaf Goodenia <i>Goodenia benthamiana</i>
										0.380	0.009	501518 Western Golden-tip <i>Goodia medicaginea</i>
										0.380	0.009	501909 Erect Peppercress <i>Lepidium pseudopapillosum</i>
										0.380	0.009	502196 Small Monkey-flower <i>Elacholoma prostrata</i>
										0.380	0.009	503050 Tiny Bog-sedge <i>Schoenus nanus</i>
										0.380	0.009	503328 Downy Swainson-pea <i>Swainsona swainsonioides</i>

Information provided by or on behalf of the applicant in a GIS file							Information calculated by EnSym					
Zone	Type	BioEVC	BioEVC conservation status	Large tree(s)	Partial removal	Condition score	Polygon Extent	Extent without overlap	SBV score	HI score	Habitat units	Offset type
										0.380	0.009	503542 Winged New Holland Daisy <i>Vittadinia pterochaeta</i>
										0.380	0.009	503721 Wimmera Mallee-box <i>Eucalyptus wimmerensis</i>
										0.380	0.009	503943 Inland Pomaderris <i>Pomaderris paniculosa subsp. paniculosa</i>
										0.380	0.009	503988 Fine-hairy Spear-grass <i>Austrostipa puberula</i>
										0.380	0.009	504206 Purple Blown-grass <i>Lachnagrostis punicea subsp. punicea</i>
										0.380	0.009	504631 Jericho Wire-grass <i>Aristida jerichoensis var. subspinulifera</i>
										0.380	0.009	504944 Southern Swainson-pea <i>Swainsona behriana</i>
										0.380	0.009	505560 Arching Flax-lily <i>Dianella sp. aff. longifolia (Benambra)</i>
1-ae	Patch	wim_0803	Endangered	0	no	0.390	0.165	0.165	0.590	0.570	0.101	10177 Brolga <i>Grus rubicunda</i>
										0.719	0.111	15021 Golden Sun Moth <i>Synemon plana</i>
										0.542	0.099	500039 Hairy-pod Wattle <i>Acacia glandulicarpa</i>
										0.542	0.099	500082 Rock Wattle <i>Acacia rupicola</i>
										0.542	0.099	500998 Thorny Bitter-pea <i>Daviesia pectinata</i>
										0.542	0.099	501090 Trailing Hop-bush <i>Dodonaea procumbens</i>
										0.542	0.099	501493 Small-leaf Goodenia <i>Goodenia benthamiana</i>
										0.542	0.099	503050 Tiny Bog-sedge <i>Schoenus nanus</i>
										0.542	0.099	503721 Wimmera Mallee-box <i>Eucalyptus wimmerensis</i>

Information provided by or on behalf of the applicant in a GIS file							Information calculated by EnSym					
Zone	Type	BioEVC	BioEVC conservation status	Large tree(s)	Partial removal	Condition score	Polygon Extent	Extent without overlap	SBV score	HI score	Habitat units	Offset type
										0.542	0.099	503916 Floodplain Rustyhood <i>Pterostylis cheraphila</i>
										0.542	0.099	503943 Inland Pomaderris <i>Pomaderris paniculosa</i> subsp. <i>paniculosa</i>
										0.542	0.099	503988 Fine-hairy Spear-grass <i>Austrostipa puberula</i>
										0.542	0.099	504206 Purple Blown-grass <i>Lachnagrostis punicea</i> subsp. <i>punicea</i>
										0.333	0.103	504631 Jericho Wire-grass <i>Aristida jerichoensis</i> var. <i>subspinulifera</i>
										0.333	0.103	504823 Spiny Rice-flower <i>Pimelea spinescens</i> subsp. <i>spinescens</i>
1-af	Patch	wim_0682	Endangered	0	no	0.910	3.616	3.616	0.816	1.000	6.581	10111 Gull-billed Tern <i>Gelochelidon nilotica macrotarsa</i>
										0.588	5.224	10177 Brolga <i>Grus rubicunda</i>
										0.398	4.610	10216 Blue-billed Duck <i>Oxyura australis</i>
										0.434	4.730	10217 Musk Duck <i>Biziura lobata</i>
										0.626	5.658	15021 Golden Sun Moth <i>Synemon plana</i>
										0.553	5.239	500039 Hairy-pod Wattle <i>Acacia glandulicarpa</i>
										0.592	5.239	500082 Rock Wattle <i>Acacia rupicola</i>
										0.531	5.237	500096 Three-nerve Wattle <i>Acacia trineura</i>
										0.487	5.237	500101 Bramble Wattle <i>Acacia victoriae</i> subsp. <i>victoriae</i>
										0.592	5.239	500682 Swamp Sheoak <i>Casuarina obesa</i>
										0.105	5.247	500998 Thorny Bitter-pea <i>Daviesia pectinata</i>
										0.553	5.239	501090 Trailing Hop-bush <i>Dodonaea procumbens</i>

Information provided by or on behalf of the applicant in a GIS file							Information calculated by EnSym					
Zone	Type	BioEVC	BioEVC conservation status	Large tree(s)	Partial removal	Condition score	Polygon Extent	Extent without overlap	SBV score	HI score	Habitat units	Offset type
										0.588	5.238	501238 Long Eryngium <i>Eryngium paludosum</i>
										0.592	5.239	501279 Kamarooka Mallee <i>Eucalyptus froggattii</i>
										0.308	5.245	501493 Small-leaf Goodenia <i>Goodenia benthamiana</i>
										0.592	5.239	501518 Western Golden-tip <i>Goodia medicaginea</i>
										0.471	5.237	501909 Erect Peppercross <i>Lepidium pseudopapillosum</i>
										0.592	5.239	502196 Small Monkey-flower <i>Elacholoma prostrata</i>
										0.193	5.241	502843 Hoary Bush-pea <i>Pultenaea daltonii</i>
										0.592	5.239	503050 Tiny Bog-sedge <i>Schoenus nanus</i>
										0.272	5.232	503328 Downy Swainson-pea <i>Swainsona swainsonioides</i>
										0.592	5.239	503721 Wimmera Mallee-box <i>Eucalyptus wimmerensis</i>
										0.465	5.240	503916 Floodplain Rustyhood <i>Pterostylis cheraphila</i>
										0.592	5.239	503943 Inland Pomaderris <i>Pomaderris paniculosa subsp. paniculosa</i>
										0.592	5.239	503988 Fine-hairy Spear-grass <i>Austrostipa puberula</i>
										0.340	5.244	504206 Purple Blown-grass <i>Lachnagrostis punicea subsp. punicea</i>
										0.592	5.239	504631 Jericho Wire-grass <i>Aristida jerichoensis var. subspinulifera</i>
										0.399	5.242	504944 Southern Swainson-pea <i>Swainsona behriana</i>
										0.305	5.244	507399 Pale Flax-lily <i>Dianella sp. aff. longifolia (Riverina)</i>

Information provided by or on behalf of the applicant in a GIS file							Information calculated by EnSym					
Zone	Type	BioEVC	BioEVC conservation status	Large tree(s)	Partial removal	Condition score	Polygon Extent	Extent without overlap	SBV score	HI score	Habitat units	Offset type
1-ag	Patch	wim_0292	Vulnerable	0	no	0.490	13.127	13.127	0.821	1.000	12.865	10111 Gull-billed Tern <i>Gelochelidon nilotica macrotarsa</i>
										0.559	10.154	10177 Brolga <i>Grus rubicunda</i>
										0.339	9.014	10216 Blue-billed Duck <i>Oxyura australis</i>
										0.366	9.214	10217 Musk Duck <i>Biziura lobata</i>
										0.161	9.147	12159 Striped Legless Lizard <i>Delma impar</i>
										0.777	11.428	15021 Golden Sun Moth <i>Synemon plana</i>
										0.596	10.269	500039 Hairy-pod Wattle <i>Acacia glandulicarpa</i>
										0.596	10.269	500082 Rock Wattle <i>Acacia rupicola</i>
										0.528	10.265	500096 Three-nerve Wattle <i>Acacia trineura</i>
										0.451	10.270	500101 Bramble Wattle <i>Acacia victoriae subsp. victoriae</i>
										0.596	10.269	500682 Swamp Sheoak <i>Casuarina obesa</i>
										0.301	10.323	500998 Thorny Bitter-pea <i>Daviesia pectinata</i>
										0.596	10.269	501090 Trailing Hop-bush <i>Dodonaea procumbens</i>
										0.562	10.266	501238 Long Eryngium <i>Eryngium paludosum</i>
										0.591	10.269	501279 Kamarooka Mallee <i>Eucalyptus froggattii</i>
										0.539	10.276	501493 Small-leaf Goodenia <i>Goodenia benthamiana</i>
										0.596	10.269	501518 Western Golden-tip <i>Goodia medicaginea</i>
										0.289	10.208	501909 Erect Peppercress <i>Lepidium pseudopapillosum</i>
										0.596	10.269	502196 Small Monkey-flower <i>Elacholoma prostrata</i>

Information provided by or on behalf of the applicant in a GIS file							Information calculated by EnSym					
Zone	Type	BioEVC	BioEVC conservation status	Large tree(s)	Partial removal	Condition score	Polygon Extent	Extent without overlap	SBV score	HI score	Habitat units	Offset type
										0.066	10.167	502843 Hoary Bush-pea <i>Pultenaea daltonii</i>
										0.596	10.269	503050 Tiny Bog-sedge <i>Schoenus nanus</i>
										0.288	10.276	503328 Downy Swainson-pea <i>Swainsona swainsonioides</i>
										0.046	10.255	503542 Winged New Holland Daisy <i>Vittadinia pterochaeta</i>
										0.596	10.269	503721 Wimmera Mallee-box <i>Eucalyptus wimmerensis</i>
										0.417	10.252	503916 Floodplain Rustyhood <i>Pterostylis cheraphila</i>
										0.596	10.269	503943 Inland Pomaderris <i>Pomaderris paniculosa subsp. paniculosa</i>
										0.596	10.269	503988 Fine-hairy Spear-grass <i>Austrostipa puberula</i>
										0.580	10.270	504206 Purple Blown-grass <i>Lachnagrostis punicea subsp. punicea</i>
										0.596	10.269	504631 Jericho Wire-grass <i>Aristida jerichoensis var. subspinulifera</i>
										0.580	10.270	504944 Southern Swainson-pea <i>Swainsona behriana</i>
										0.036	10.269	505560 Arching Flax-lily <i>Dianella sp. aff. longifolia (Benambra)</i>
										0.390	10.255	507399 Pale Flax-lily <i>Dianella sp. aff. longifolia (Riverina)</i>
1-ah	Patch	wim_0292	Vulnerable	0	no	0.490	1.573	1.573	0.655	0.559	1.202	10177 Brolga <i>Grus rubicunda</i>
										0.252	1.088	12159 Striped Legless Lizard <i>Delma impar</i>
										0.671	1.344	15021 Golden Sun Moth <i>Synemon plana</i>
										0.603	1.236	500039 Hairy-pod Wattle <i>Acacia glandulicarpa</i>

Information provided by or on behalf of the applicant in a GIS file							Information calculated by EnSym					
Zone	Type	BioEVC	BioEVC conservation status	Large tree(s)	Partial removal	Condition score	Polygon Extent	Extent without overlap	SBV score	HI score	Habitat units	Offset type
										0.603	1.236	500082 Rock Wattle <i>Acacia rupicola</i>
										0.492	1.240	500096 Three-nerve Wattle <i>Acacia trineura</i>
										0.320	1.228	500101 Bramble Wattle <i>Acacia victoriae</i> subsp. <i>victoriae</i>
										0.603	1.236	500682 Swamp Sheoak <i>Casuarina obesa</i>
										0.597	1.237	500998 Thorny Bitter-pea <i>Daviesia pectinata</i>
										0.603	1.236	501090 Trailing Hop-bush <i>Dodonaea procumbens</i>
										0.438	1.242	501238 Long Eryngium <i>Eryngium paludosum</i>
										0.511	1.239	501279 Kamarooka Mallee <i>Eucalyptus froggattii</i>
										0.603	1.236	501493 Small-leaf Goodenia <i>Goodenia benthamiana</i>
										0.603	1.236	501518 Western Golden-tip <i>Goodia medicaginea</i>
										0.312	1.230	501909 Erect Peppercross <i>Lepidium pseudopapillosum</i>
										0.603	1.236	502196 Small Monkey-flower <i>Elacholoma prostrata</i>
										0.603	1.236	503050 Tiny Bog-sedge <i>Schoenus nanus</i>
										0.394	1.228	503328 Downy Swainson-pea <i>Swainsona swainsonioides</i>
										0.312	1.230	503542 Winged New Holland Daisy <i>Vittadinia pterochaeta</i>
										0.603	1.236	503721 Wimmera Mallee-box <i>Eucalyptus wimmerensis</i>
										0.005	1.196	503916 Floodplain Rustyhood <i>Pterostylis cheraphila</i>

SCENARIO TESTING

Information provided by or on behalf of the applicant in a GIS file							Information calculated by EnSym					
Zone	Type	BioEVC	BioEVC conservation status	Large tree(s)	Partial removal	Condition score	Polygon Extent	Extent without overlap	SBV score	HI score	Habitat units	Offset type
										0.603	1.236	503943 Inland Pomaderris <i>Pomaderris paniculosa</i> subsp. <i>paniculosa</i>
										0.603	1.236	503988 Fine-hairy Spear-grass <i>Austrostipa puberula</i>
										0.603	1.236	504206 Purple Blown-grass <i>Lachnagrostis punicea</i> subsp. <i>punicea</i>
										0.603	1.236	504631 Jericho Wire-grass <i>Aristida jerichoensis</i> var. <i>subspinulifera</i>
										0.008	1.179	504823 Spiny Rice-flower <i>Pimelea spinescens</i> subsp. <i>spinescens</i>
										0.600	1.236	504944 Southern Swainson-pea <i>Swainsona behriana</i>
										0.299	1.231	505560 Arching Flax-lily <i>Dianella</i> sp. aff. <i>longifolia</i> (<i>Benambra</i>)
1-ai	Patch	wim_0292	Vulnerable	0	no	0.490	2.024	2.024	0.644	0.578	1.565	10177 Brolga <i>Grus rubicunda</i>
										0.051	1.407	10216 Blue-billed Duck <i>Oxyura australis</i>
										0.055	1.437	10217 Musk Duck <i>Biziura lobata</i>
										0.254	1.409	12159 Striped Legless Lizard <i>Delma impar</i>
										0.741	1.733	15021 Golden Sun Moth <i>Synemon plana</i>
										0.625	1.611	500039 Hairy-pod Wattle <i>Acacia glandulicarpa</i>
										0.625	1.611	500082 Rock Wattle <i>Acacia rupicola</i>
										0.508	1.618	500096 Three-nerve Wattle <i>Acacia trineura</i>
										0.327	1.623	500101 Bramble Wattle <i>Acacia victoriae</i> subsp. <i>victoriae</i>
										0.625	1.611	500682 Swamp Sheoak <i>Casuarina obesa</i>
										0.623	1.611	500998 Thorny Bitter-pea <i>Daviesia pectinata</i>

Information provided by or on behalf of the applicant in a GIS file							Information calculated by EnSym					
Zone	Type	BioEVC	BioEVC conservation status	Large tree(s)	Partial removal	Condition score	Polygon Extent	Extent without overlap	SBV score	HI score	Habitat units	Offset type
										0.625	1.611	501090 Trailing Hop-bush <i>Dodonaea procumbens</i>
										0.441	1.624	501238 Long Eryngium <i>Eryngium paludosum</i>
										0.522	1.617	501279 Kamarooka Mallee <i>Eucalyptus froggattii</i>
										0.625	1.611	501493 Small-leaf Goodenia <i>Goodenia benthamiana</i>
										0.625	1.611	501518 Western Golden-tip <i>Goodia medicaginea</i>
										0.253	1.622	501909 Erect Peppercross <i>Lepidium pseudopapillosum</i>
										0.625	1.611	502196 Small Monkey-flower <i>Elacholoma prostrata</i>
										0.625	1.611	503050 Tiny Bog-sedge <i>Schoenus nanus</i>
										0.383	1.616	503328 Downy Swainson-pea <i>Swainsona swainsonioides</i>
										0.253	1.622	503542 Winged New Holland Daisy <i>Vittadinia pterochaeta</i>
										0.625	1.611	503721 Wimmera Mallee-box <i>Eucalyptus wimmerensis</i>
										0.076	1.625	503916 Floodplain Rustyhood <i>Pterostylis cheraphila</i>
										0.625	1.611	503943 Inland Pomaderris <i>Pomaderris paniculosa subsp. paniculosa</i>
										0.625	1.611	503988 Fine-hairy Spear-grass <i>Austrostipa puberula</i>
										0.625	1.611	504206 Purple Blown-grass <i>Lachnagrostis punicea subsp. punicea</i>
										0.625	1.611	504631 Jericho Wire-grass <i>Aristida jerichoensis var. subspinulifera</i>

SCENARIO TESTING

Information provided by or on behalf of the applicant in a GIS file							Information calculated by EnSym					
Zone	Type	BioEVC	BioEVC conservation status	Large tree(s)	Partial removal	Condition score	Polygon Extent	Extent without overlap	SBV score	HI score	Habitat units	Offset type
										0.623	1.611	504944 Southern Swainson-pea <i>Swainsona behriana</i>
										0.190	1.626	505560 Arching Flax-lily <i>Dianella sp. aff. longifolia (Benambra)</i>
										0.076	1.625	507399 Pale Flax-lily <i>Dianella sp. aff. longifolia (Riverina)</i>
1-aj	Patch	wim_0292	Vulnerable	0	no	0.470	14.460	14.460	0.846	1.000	13.593	10111 Gull-billed Tern <i>Gelochelidon nilotica macrotarsa</i>
										0.606	10.950	10177 Brolga <i>Grus rubicunda</i>
										0.182	9.574	10216 Blue-billed Duck <i>Oxyura australis</i>
										0.227	9.827	10217 Musk Duck <i>Biziura lobata</i>
										0.482	10.407	12159 Striped Legless Lizard <i>Delma impar</i>
										0.765	12.039	15021 Golden Sun Moth <i>Synemon plana</i>
										0.646	11.185	500039 Hairy-pod Wattle <i>Acacia glandulicarpa</i>
										0.646	11.185	500082 Rock Wattle <i>Acacia rupicola</i>
										0.246	11.255	500096 Three-nerve Wattle <i>Acacia trineura</i>
										0.479	11.185	500101 Bramble Wattle <i>Acacia victoriae subsp. victoriae</i>
										0.646	11.185	500682 Swamp Sheoak <i>Casuarina obesa</i>
										0.633	11.178	500998 Thorny Bitter-pea <i>Daviesia pectinata</i>
										0.646	11.185	501090 Trailing Hop-bush <i>Dodonaea procumbens</i>
										0.646	11.185	501238 Long Eryngium <i>Eryngium paludosum</i>
										0.646	11.185	501279 Kamarooka Mallee <i>Eucalyptus froggattii</i>
										0.646	11.185	501493 Small-leaf Goodenia <i>Goodenia benthamiana</i>

Information provided by or on behalf of the applicant in a GIS file							Information calculated by EnSym					
Zone	Type	BioEVC	BioEVC conservation status	Large tree(s)	Partial removal	Condition score	Polygon Extent	Extent without overlap	SBV score	HI score	Habitat units	Offset type
										0.646	11.185	501518 Western Golden-tip <i>Goodia medicaginea</i>
										0.495	11.163	501909 Erect Peppercross <i>Lepidium pseudopapillosum</i>
										0.646	11.185	502196 Small Monkey-flower <i>Elacholoma prostrata</i>
										0.646	11.185	503050 Tiny Bog-sedge <i>Schoenus nanus</i>
										0.646	11.185	503328 Downy Swainson-pea <i>Swainsona swainsonioides</i>
										0.526	11.192	503542 Winged New Holland Daisy <i>Vittadinia pterochaeta</i>
										0.646	11.185	503654 Yellow-tongue Daisy <i>Brachyscome chrysoglossa</i>
										0.646	11.185	503721 Wimmera Mallee-box <i>Eucalyptus wimmerensis</i>
										0.128	11.087	503916 Floodplain Rustyhood <i>Pterostylis cheraphila</i>
										0.481	11.167	503943 Inland Pomaderris <i>Pomaderris paniculosa subsp. paniculosa</i>
										0.646	11.185	503988 Fine-hairy Spear-grass <i>Austrostipa puberula</i>
										0.102	11.154	504203 Western Sheoak <i>Allocasuarina mackliniana subsp. hirtilinea</i>
										0.646	11.185	504206 Purple Blown-grass <i>Lachnagrostis punicea subsp. punicea</i>
										0.627	11.200	504631 Jericho Wire-grass <i>Aristida jerichoensis var. subspinulifera</i>
										0.531	11.193	504823 Spiny Rice-flower <i>Pimelea spinescens subsp. spinescens</i>
										0.646	11.185	504944 Southern Swainson-pea <i>Swainsona behriana</i>

Information provided by or on behalf of the applicant in a GIS file							Information calculated by EnSym					
Zone	Type	BioEVC	BioEVC conservation status	Large tree(s)	Partial removal	Condition score	Polygon Extent	Extent without overlap	SBV score	HI score	Habitat units	Offset type
										0.646	11.185	505560 Arching Flax-lily <i>Dianella sp. aff. longifolia</i> (Benambra)
										0.563	11.219	507399 Pale Flax-lily <i>Dianella sp. aff. longifolia</i> (Riverina)
1-ak	Patch	wim_0803	Endangered	0	no	0.490	11.157	11.157	0.929	1.000	10.934	10111 Gull-billed Tern <i>Gelochelidon nilotica macrotarsa</i>
										0.603	8.813	10177 Brolga <i>Grus rubicunda</i>
										0.037	7.663	10216 Blue-billed Duck <i>Oxyura australis</i>
										0.091	7.882	10217 Musk Duck <i>Biziura lobata</i>
										0.498	8.324	12159 Striped Legless Lizard <i>Delma impar</i>
										0.811	9.901	15021 Golden Sun Moth <i>Synemon plana</i>
										0.676	9.166	500039 Hairy-pod Wattle <i>Acacia glandulicarpa</i>
										0.676	9.166	500082 Rock Wattle <i>Acacia rupicola</i>
										0.073	9.111	500096 Three-nerve Wattle <i>Acacia trineura</i>
										0.333	9.199	500101 Bramble Wattle <i>Acacia victoriae subsp. victoriae</i>
										0.676	9.166	500682 Swamp Sheoak <i>Casuarina obesa</i>
										0.676	9.166	500998 Thorny Bitter-pea <i>Daviesia pectinata</i>
										0.676	9.166	501090 Trailing Hop-bush <i>Dodonaea procumbens</i>
										0.429	9.149	501238 Long Eryngium <i>Eryngium paludosum</i>
										0.676	9.166	501279 Kamarooka Mallee <i>Eucalyptus froggattii</i>
										0.676	9.166	501493 Small-leaf Goodenia <i>Goodenia benthamiana</i>
										0.676	9.166	501518 Western Golden-tip <i>Goodia medicaginea</i>

Information provided by or on behalf of the applicant in a GIS file							Information calculated by EnSym					
Zone	Type	BioEVC	BioEVC conservation status	Large tree(s)	Partial removal	Condition score	Polygon Extent	Extent without overlap	SBV score	HI score	Habitat units	Offset type
										0.484	9.164	501909 Erect Peppercress <i>Lepidium pseudopapillosum</i>
										0.676	9.166	502196 Small Monkey-flower <i>Elacholoma prostrata</i>
										0.676	9.166	503050 Tiny Bog-sedge <i>Schoenus nanus</i>
										0.676	9.166	503328 Downy Swainson-pea <i>Swainsona swainsonioides</i>
										0.495	9.167	503542 Winged New Holland Daisy <i>Vittadinia pterochaeta</i>
										0.596	9.145	503654 Yellow-tongue Daisy <i>Brachyscome chrysoglossa</i>
										0.676	9.166	503721 Wimmera Mallee-box <i>Eucalyptus wimmerensis</i>
										0.486	9.203	503943 Inland Pomaderris <i>Pomaderris paniculosa subsp. paniculosa</i>
										0.676	9.166	503988 Fine-hairy Spear-grass <i>Austrostipa puberula</i>
										0.053	8.970	504203 Western Sheoak <i>Allocasuarina mackliniana subsp. hirtilinea</i>
										0.676	9.166	504206 Purple Blown-grass <i>Lachnagrostis punicea subsp. punicea</i>
										0.676	9.166	504631 Jericho Wire-grass <i>Aristida jerichoensis var. subspinulifera</i>
										0.655	9.181	504823 Spiny Rice-flower <i>Pimelea spinescens subsp. spinescens</i>
										0.676	9.166	504944 Southern Swainson-pea <i>Swainsona behriana</i>
										0.676	9.166	505560 Arching Flax-lily <i>Dianella sp. aff. longifolia (Benambra)</i>
										0.419	9.191	507399 Pale Flax-lily <i>Dianella sp. aff. longifolia (Riverina)</i>

Information provided by or on behalf of the applicant in a GIS file							Information calculated by EnSym					
Zone	Type	BioEVC	BioEVC conservation status	Large tree(s)	Partial removal	Condition score	Polygon Extent	Extent without overlap	SBV score	HI score	Habitat units	Offset type
1-al	Patch	wim_0803	Endangered	0	no	0.490	27.833	27.833	0.899	1.000	27.276	10111 Gull-billed Tern <i>Gelochelidon nilotica macrotarsa</i>
										0.615	22.113	10177 Brolga <i>Grus rubicunda</i>
										0.010	19.287	10216 Blue-billed Duck <i>Oxyura australis</i>
										0.029	19.786	10217 Musk Duck <i>Biziura lobata</i>
										0.299	20.876	12159 Striped Legless Lizard <i>Delma impar</i>
										0.826	24.951	15021 Golden Sun Moth <i>Synemon plana</i>
										0.727	23.548	500039 Hairy-pod Wattle <i>Acacia glandulicarpa</i>
										0.727	23.548	500082 Rock Wattle <i>Acacia rupicola</i>
										0.451	23.565	500101 Bramble Wattle <i>Acacia victoriae subsp. victoriae</i>
										0.712	23.559	500682 Swamp Sheoak <i>Casuarina obesa</i>
										0.727	23.548	500998 Thorny Bitter-pea <i>Daviesia pectinata</i>
										0.727	23.548	501090 Trailing Hop-bush <i>Dodonaea procumbens</i>
										0.305	23.473	501238 Long Eryngium <i>Eryngium paludosum</i>
										0.725	23.550	501279 Kamarooka Mallee <i>Eucalyptus froggattii</i>
										0.727	23.548	501493 Small-leaf Goodenia <i>Goodenia benthamiana</i>
										0.664	23.583	501518 Western Golden-tip <i>Goodia medicaginea</i>
										0.513	23.579	501909 Erect Peppercross <i>Lepidium pseudopapillosum</i>
										0.628	23.585	502196 Small Monkey-flower <i>Elacholoma prostrata</i>
										0.727	23.548	503050 Tiny Bog-sedge <i>Schoenus nanus</i>

Information provided by or on behalf of the applicant in a GIS file							Information calculated by EnSym					
Zone	Type	BioEVC	BioEVC conservation status	Large tree(s)	Partial removal	Condition score	Polygon Extent	Extent without overlap	SBV score	HI score	Habitat units	Offset type
										0.570	23.594	503328 Downy Swainson-pea <i>Swainsona swainsonioides</i>
										0.377	23.503	503542 Winged New Holland Daisy <i>Vittadinia pterochaeta</i>
										0.539	23.577	503654 Yellow-tongue Daisy <i>Brachyscome chrysoglossa</i>
										0.727	23.548	503721 Wimmera Mallee-box <i>Eucalyptus wimmerensis</i>
										0.042	23.188	503916 Floodplain Rustyhood <i>Pterostylis cheraphila</i>
										0.727	23.548	503943 Inland Pomaderris <i>Pomaderris paniculosa subsp. paniculosa</i>
										0.727	23.548	503988 Fine-hairy Spear-grass <i>Austrostipa puberula</i>
										0.727	23.548	504206 Purple Blown-grass <i>Lachnagrostis punicea subsp. punicea</i>
										0.624	23.582	504631 Jericho Wire-grass <i>Aristida jerichoensis var. subspinulifera</i>
										0.670	23.548	504823 Spiny Rice-flower <i>Pimelea spinescens subsp. spinescens</i>
										0.614	23.588	504944 Southern Swainson-pea <i>Swainsona behriana</i>
										0.720	23.553	505560 Arching Flax-lily <i>Dianella sp. aff. longifolia (Benambra)</i>
										0.020	27.276	505640 Wimmera Woodruff <i>Asperula wimmerana</i>
										0.055	23.236	507399 Pale Flax-lily <i>Dianella sp. aff. longifolia (Riverina)</i>
1-am	Patch	wim_0292	Vulnerable	0	no	0.460	0.895	0.895	0.707	0.607	0.661	10177 Brolga <i>Grus rubicunda</i>
										0.016	0.622	12159 Striped Legless Lizard <i>Delma impar</i>

Information provided by or on behalf of the applicant in a GIS file							Information calculated by EnSym					
Zone	Type	BioEVC	BioEVC conservation status	Large tree(s)	Partial removal	Condition score	Polygon Extent	Extent without overlap	SBV score	HI score	Habitat units	Offset type
										0.789	0.737	15021 Golden Sun Moth <i>Synemon plana</i>
										0.704	0.701	500039 Hairy-pod Wattle <i>Acacia glandulicarpa</i>
										0.704	0.701	500082 Rock Wattle <i>Acacia rupicola</i>
										0.024	0.720	500101 Bramble Wattle <i>Acacia victoriae subsp. victoriae</i>
										0.704	0.701	500682 Swamp Sheoak <i>Casuarina obesa</i>
										0.704	0.701	500998 Thorny Bitter-pea <i>Daviesia pectinata</i>
										0.704	0.701	501090 Trailing Hop-bush <i>Dodonaea procumbens</i>
										0.487	0.706	501279 Kamarooka Mallee <i>Eucalyptus froggattii</i>
										0.704	0.701	501493 Small-leaf Goodenia <i>Goodenia benthamiana</i>
										0.704	0.701	501518 Western Golden-tip <i>Goodia medicaginea</i>
										0.009	0.687	501909 Erect Peppercross <i>Lepidium pseudopapillosum</i>
										0.255	0.705	502196 Small Monkey-flower <i>Elacholoma prostrata</i>
										0.704	0.701	503050 Tiny Bog-sedge <i>Schoenus nanus</i>
										0.034	0.709	503328 Downy Swainson-pea <i>Swainsona swainsonioides</i>
										0.704	0.701	503721 Wimmera Mallee-box <i>Eucalyptus wimmerensis</i>
										0.704	0.701	503943 Inland Pomaderris <i>Pomaderris paniculosa subsp. paniculosa</i>
										0.704	0.701	503988 Fine-hairy Spear-grass <i>Austrostipa puberula</i>

SCENARIO TESTING

Information provided by or on behalf of the applicant in a GIS file							Information calculated by EnSym					
Zone	Type	BioEVC	BioEVC conservation status	Large tree(s)	Partial removal	Condition score	Polygon Extent	Extent without overlap	SBV score	HI score	Habitat units	Offset type
										0.704	0.701	504206 Purple Blown-grass <i>Lachnagrostis punicea</i> subsp. <i>punicea</i>
										0.704	0.701	504631 Jericho Wire-grass <i>Aristida jerichoensis</i> var. <i>subspinulifera</i>
										0.704	0.701	504823 Spiny Rice-flower <i>Pimelea spinescens</i> subsp. <i>spinescens</i>
										0.255	0.705	504944 Southern Swainson-pea <i>Swainsona behriana</i>
										0.487	0.706	505560 Arching Flax-lily <i>Dianella</i> sp. aff. <i>longifolia</i> (<i>Benambra</i>)

SCENARIO TESTING

Appendix 2: Information about impacts to rare or threatened species' habitats on site

This table lists all rare or threatened species' habitats mapped at the site.

Species common name	Species scientific name	Species number	Conservation status	Group	Habitat impacted	% habitat value affected
Wimmera Woodruff	<i>Asperula wimmerana</i>	505640	Rare	Highly Localised Habitat	Habitat importance map ; special site	2.7436
Thorny Bitter-pea	<i>Daviesia pectinata</i>	500998	Rare	Dispersed	Habitat importance map	0.0275
Hairy-pod Wattle	<i>Acacia glandulicarpa</i>	500039	Vulnerable	Dispersed	Habitat importance map	0.0274
Inland Pomaderris	<i>Pomaderris paniculosa subsp. paniculosa</i>	503943	Vulnerable	Dispersed	Habitat importance map	0.0249
Erect Peppercross	<i>Lepidium pseudopapillosum</i>	501909	Endangered	Dispersed	Habitat importance map	0.0234
Three-nerve Wattle	<i>Acacia trineura</i>	500096	Vulnerable	Dispersed	Habitat importance map	0.0198
Jericho Wire-grass	<i>Aristida jerichoensis var. subspinulifera</i>	504631	Endangered	Dispersed	Habitat importance map	0.0168
Small-leaf Goodenia	<i>Goodenia benthamiana</i>	501493	Rare	Dispersed	Habitat importance map	0.0168
Western Sheoak	<i>Allocasuarina mackliniana subsp. hirtilinea</i>	504203	Rare	Dispersed	Habitat importance map	0.0158
Rock Wattle	<i>Acacia rupicola</i>	500082	Rare	Dispersed	Habitat importance map	0.0153
Hoary Bush-pea	<i>Pultenaea daltonii</i>	502843	Rare	Dispersed	Habitat importance map	0.0143
Spiny Rice-flower	<i>Pimelea spinescens subsp. spinescens</i>	504823	Endangered	Dispersed	Habitat importance map	0.0112
Downy Swainson-pea	<i>Swainsona swainsonioides</i>	503328	Endangered	Dispersed	Habitat importance map	0.0104
Kamarooka Mallee	<i>Eucalyptus froggattii</i>	501279	Rare	Dispersed	Habitat importance map	0.0101
Gull-billed Tern	<i>Gelochelidon nilotica macrotarsa</i>	10111	Endangered	Dispersed	Habitat importance map	0.0098
Striped Legless Lizard	<i>Delma impar</i>	12159	Endangered	Dispersed	Habitat importance map	0.0096
Swamp Sheoak	<i>Casuarina obesa</i>	500682	Endangered	Dispersed	Habitat importance map	0.0093
Yellow-tongue Daisy	<i>Brachyscome chrysoglossa</i>	503654	Vulnerable	Dispersed	Habitat importance map	0.0088
Wimmera Mallee-box	<i>Eucalyptus wimmerensis</i>	503721	Rare	Dispersed	Habitat importance map	0.0087

Pale Flax-lily	<i>Dianella sp. aff. longifolia</i> (<i>Riverina</i>)	507399	Vulnerable	Dispersed	Habitat importance map	0.0086
Western Golden-tip	<i>Goodia medicaginea</i>	501518	Rare	Dispersed	Habitat importance map	0.0083
Purple Blown-grass	<i>Lachnagrostis punicea subsp. punicea</i>	504206	Rare	Dispersed	Habitat importance map	0.0077
Trailing Hop-bush	<i>Dodonaea procumbens</i>	501090	Vulnerable	Dispersed	Habitat importance map	0.0073
Brolga	<i>Grus rubicunda</i>	10177	Vulnerable	Dispersed	Habitat importance map	0.0070
Golden Sun Moth	<i>Synemon plana</i>	15021	Critically endangered	Dispersed	Habitat importance map	0.0069
Tiny Bog-sedge	<i>Schoenus nanus</i>	503050	Rare	Dispersed	Habitat importance map	0.0068
Southern Swainson-pea	<i>Swainsona behriana</i>	504944	Rare	Dispersed	Habitat importance map	0.0067
Floodplain Rustyhood	<i>Pterostylis cheraphila</i>	503916	Vulnerable	Dispersed	Habitat importance map	0.0066
Small Monkey-flower	<i>Elacholoma prostrata</i>	502196	Rare	Dispersed	Habitat importance map	0.0065
Bramble Wattle	<i>Acacia victoriae subsp. victoriae</i>	500101	Rare	Dispersed	Habitat importance map	0.0058
Winged New Holland Daisy	<i>Vittadinia pterochaeta</i>	503542	Vulnerable	Dispersed	Habitat importance map	0.0057
Long Eryngium	<i>Eryngium paludosum</i>	501238	Vulnerable	Dispersed	Habitat importance map	0.0057
Arching Flax-lily	<i>Dianella sp. aff. longifolia</i> (<i>Benambra</i>)	505560	Vulnerable	Dispersed	Habitat importance map	0.0056
Fine-hairy Spear-grass	<i>Austrostipa puberula</i>	503988	Rare	Dispersed	Habitat importance map	0.0053
Blue-billed Duck	<i>Oxyura australis</i>	10216	Endangered	Dispersed	Habitat importance map	0.0052
Musk Duck	<i>Biziura lobata</i>	10217	Vulnerable	Dispersed	Habitat importance map	0.0050
Neat Spear-grass	<i>Austrostipa mundula</i>	503281	Rare	Dispersed	Habitat importance map	0.0050
Slender Club-sedge	<i>Isolepis congrua</i>	501773	Vulnerable	Dispersed	Habitat importance map	0.0049
Riverine Flax-lily	<i>Dianella porracea</i>	504266	Vulnerable	Dispersed	Habitat importance map	0.0049
Rigid Spider-orchid	<i>Caladenia tensa</i>	500338	Vulnerable	Dispersed	Habitat importance map	0.0048
Fuzzy New Holland Daisy	<i>Vittadinia cuneata var. morrisii</i>	505060	Rare	Dispersed	Habitat importance map	0.0048
Australasian Shoveler	<i>Anas rhynchotis</i>	10212	Vulnerable	Dispersed	Habitat importance map	0.0045

Australian Bustard	<i>Ardeotis australis</i>	10176	Critically endangered	Dispersed	Habitat importance map	0.0044
Small Milkwort	<i>Comesperma polygaloides</i>	500798	Vulnerable	Dispersed	Habitat importance map	0.0044
Lewin's Rail	<i>Lewinia pectoralis pectoralis</i>	10045	Vulnerable	Dispersed	Habitat importance map ; special site	0.0043
Hardhead	<i>Aythya australis</i>	10215	Vulnerable	Dispersed	Habitat importance map	0.0043
Diosma Rice-flower	<i>Pimelea flava subsp. dichotoma</i>	502518	Rare	Dispersed	Habitat importance map	0.0043
Button Immortelle	<i>Leptorhynchos waitzia</i>	501949	Vulnerable	Dispersed	Habitat importance map	0.0042
Baillon's Crake	<i>Porzana pusilla palustris</i>	10050	Vulnerable	Dispersed	Habitat importance map	0.0041
Dark Wire-grass	<i>Aristida calycina var. calycina</i>	503630	Rare	Dispersed	Habitat importance map	0.0039
Eastern Great Egret	<i>Ardea modesta</i>	10187	Vulnerable	Dispersed	Habitat importance map	0.0038
Spiny Lignum	<i>Duma horrida subsp. horrida</i>	502230	Rare	Dispersed	Habitat importance map	0.0038
Freckled Duck	<i>Stictonetta naevosa</i>	10214	Endangered	Dispersed	Habitat importance map	0.0036
Pepper Grass	<i>Panicum laevinode</i>	504808	Vulnerable	Dispersed	Habitat importance map	0.0036
Dwarf Brooklime	<i>Gratiola pumilo</i>	503753	Rare	Dispersed	Habitat importance map	0.0034
Quinetia	<i>Quinetia urvillei</i>	502885	Rare	Dispersed	Habitat importance map	0.0033
Hairy Tails	<i>Ptilotus erubescens</i>	502825	Vulnerable	Dispersed	Habitat importance map	0.0033
Bearded Dragon	<i>Pogona barbata</i>	12177	Vulnerable	Dispersed	Habitat importance map	0.0032
Salt Paperbark	<i>Melaleuca halmaturorum</i>	502149	Vulnerable	Dispersed	Habitat importance map	0.0029
Winged Peppercross	<i>Lepidium monoplocoides</i>	501905	Endangered	Dispersed	Habitat importance map	0.0027
Buloke Mistletoe	<i>Amyema linophylla subsp. orientalis</i>	500217	Vulnerable	Dispersed	Habitat importance map	0.0026
Dwarf Yellow-heads	<i>Trichanthodium baracchianum</i>	501476	Vulnerable	Dispersed	Habitat importance map	0.0026
Club-hair New Holland Daisy	<i>Vittadinia condyloides</i>	503536	Rare	Dispersed	Habitat importance map	0.0025
Half-bearded Spear-grass	<i>Austrostipa hemipogon</i>	503985	Rare	Dispersed	Habitat importance map	0.0020
Common Beard-heath	<i>Leucopogon virgatus var. brevifolius</i>	504392	Rare	Dispersed	Habitat importance map	0.0019

Buloke	<i>Allocasuarina luehmannii</i>	500678	Endangered	Dispersed	Habitat importance map ; special site	0.0019
Black Falcon	<i>Falco subniger</i>	10238	Vulnerable	Dispersed	Habitat importance map	0.0018
Red-tailed Black-Cockatoo	<i>Calyptorhynchus banksii graptogyne</i>	10264	Endangered	Dispersed	Habitat importance map	0.0017
Fringed Sun-orchid	<i>Thelymitra luteocillium</i>	503375	Rare	Dispersed	Habitat importance map	0.0016
Australian Little Bittern	<i>Ixobrychus dubius</i>	10195	Endangered	Dispersed	Habitat importance map	0.0015
Tufted Grass-tree	<i>Xanthorrhoea caespitosa</i>	505088	Rare	Dispersed	Habitat importance map	0.0015
Intermediate Egret	<i>Ardea intermedia</i>	10186	Endangered	Dispersed	Habitat importance map	0.0013
Dwarf Swainson-pea	<i>Swainsona phacoides</i>	503323	Endangered	Dispersed	Habitat importance map	0.0011
Australasian Bittern	<i>Botaurus poiciloptilus</i>	10197	Endangered	Dispersed	Habitat importance map	0.0010
Common White Sunray	<i>Rhodanthe floribunda</i>	505296	Endangered	Dispersed	Habitat importance map	0.0009
Mallee Annual-bluebell	<i>Wahlenbergia tumidifructa</i>	504060	Rare	Dispersed	Habitat importance map	0.0008
Giant New Holland Daisy	<i>Vittadinia megacephala</i>	503540	Vulnerable	Dispersed	Habitat importance map	0.0006
Large White Spider-orchid	<i>Caladenia venusta</i>	500533	Rare	Dispersed	Habitat importance map	0.0006
Scaly Mantle	<i>Eriochlamys squamata</i>	505661	Vulnerable	Dispersed	Habitat importance map	0.0005
Yellow Burr-daisy	<i>Calotis lappulacea</i>	500598	Rare	Dispersed	Habitat importance map	0.0004
Small-flower Mat-rush	<i>Lomandra micrantha subsp. tuberculata</i>	504711	Rare	Dispersed	Habitat importance map	0.0004
Red Swainson-pea	<i>Swainsona plagiotropis</i>	503324	Endangered	Dispersed	Habitat importance map	0.0004
Purple Love-grass	<i>Eragrostis lacunaria</i>	501190	Vulnerable	Dispersed	Habitat importance map	0.0003
Narrow-leaf Phebalium	<i>Phebalium stenophyllum</i>	502493	Rare	Dispersed	Habitat importance map	0.0003
Growling Grass Frog	<i>Litoria raniformis</i>	13207	Endangered	Dispersed	Habitat importance map	0.0003
Bush Stone-curlew	<i>Burhinus grallarius</i>	10174	Endangered	Dispersed	Habitat importance map	0.0003
Pin Sida	<i>Sida fibulifera</i>	503142	Vulnerable	Dispersed	Habitat importance map	0.0003
Heathy Bluebush	<i>Maireana oppositifolia</i>	502106	Rare	Dispersed	Habitat importance map	0.0002

Slender Darling-pea	<i>Swainsona murrayana</i>	503321	Endangered	Dispersed	Habitat importance map	0.0001
Tough Scurf-pea	<i>Cullen tenax</i>	502776	Endangered	Dispersed	Habitat importance map	0.0001

Habitat group

- Highly localised habitat means there is 2000 hectares or less mapped habitat for the species
- Dispersed habitat means there is more than 2000 hectares of mapped habitat for the species

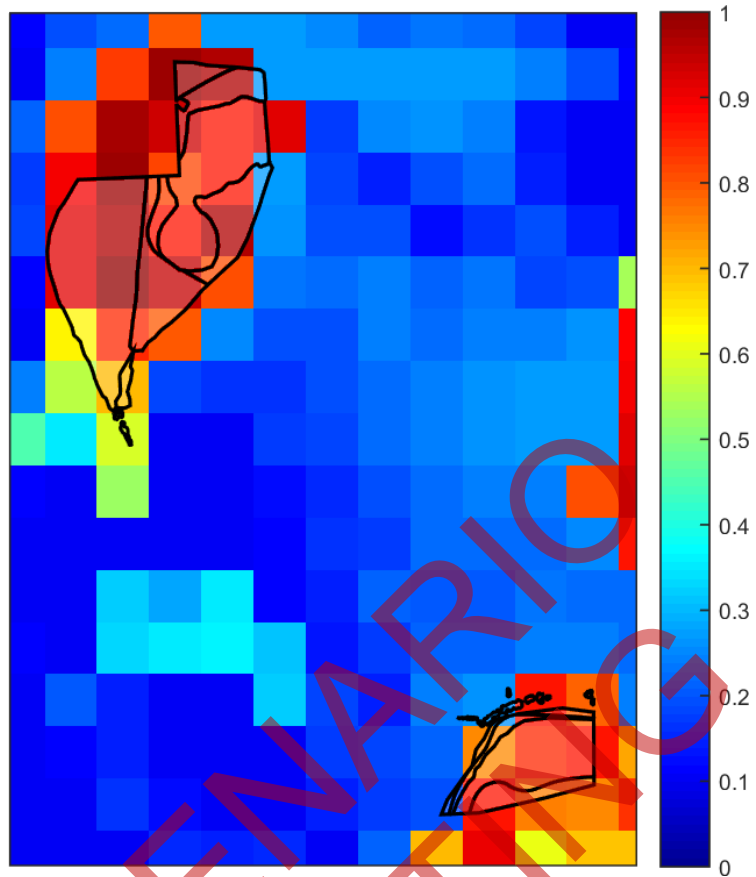
Habitat impacted

- Habitat importance maps are the maps defined in the Guidelines that include all the mapped habitat for a rare or threatened species
- Top ranking maps are the maps defined in the Guidelines that depict the important areas of a dispersed species habitat, developed from the highest habitat importance scores in dispersed species habitat maps and selected VBA records
- Selected VBA record is an area in Victoria that represents a large population, roosting or breeding site etc.

SCENARIO TESTING

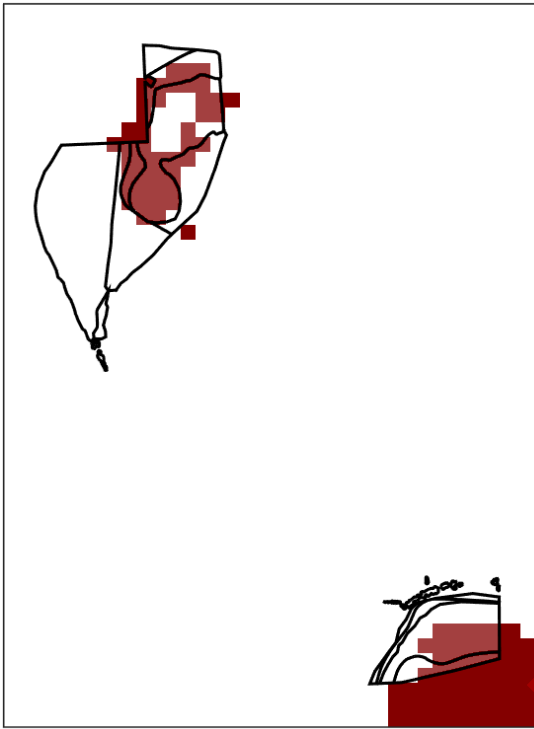
Appendix 3 – Images of mapped native vegetation

2. Strategic biodiversity values map

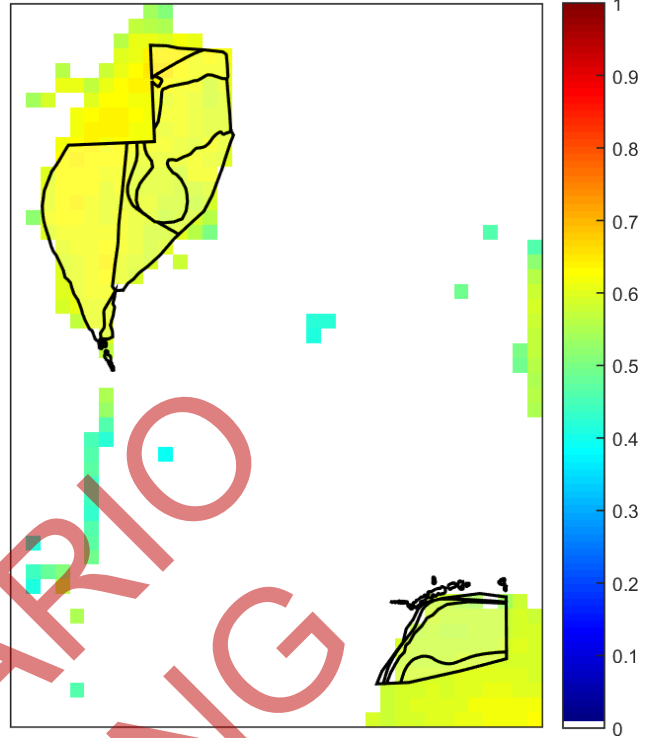


3. Habitat importance maps

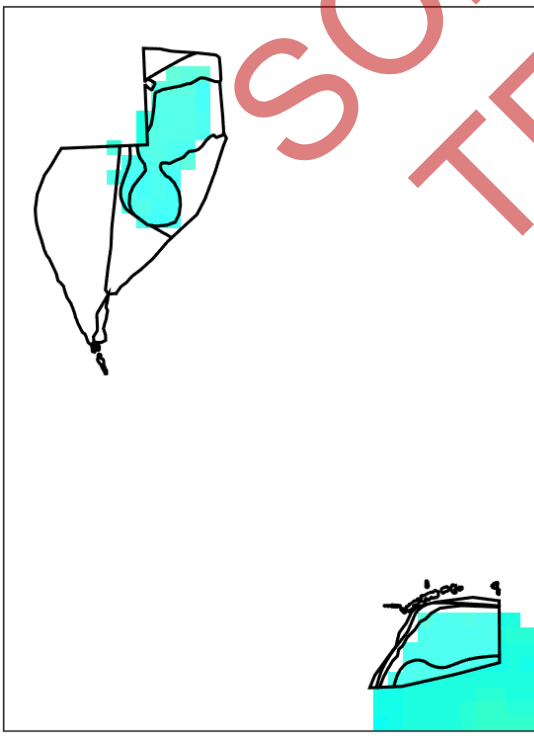
Gull-billed Tern
Gelochelidon nilotica macrotarsa
10111



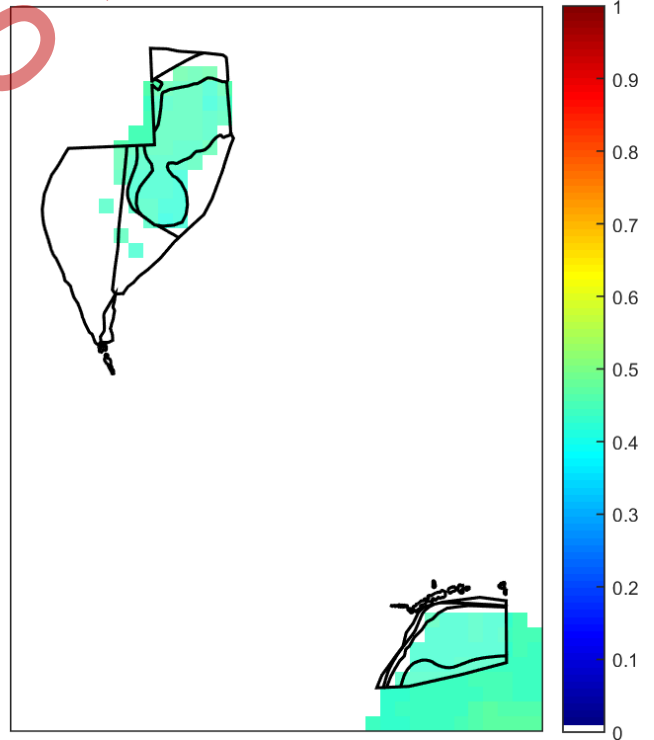
Brolga
Grus rubicunda
10177



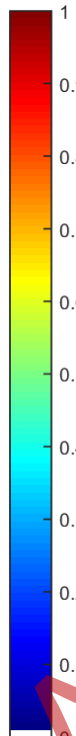
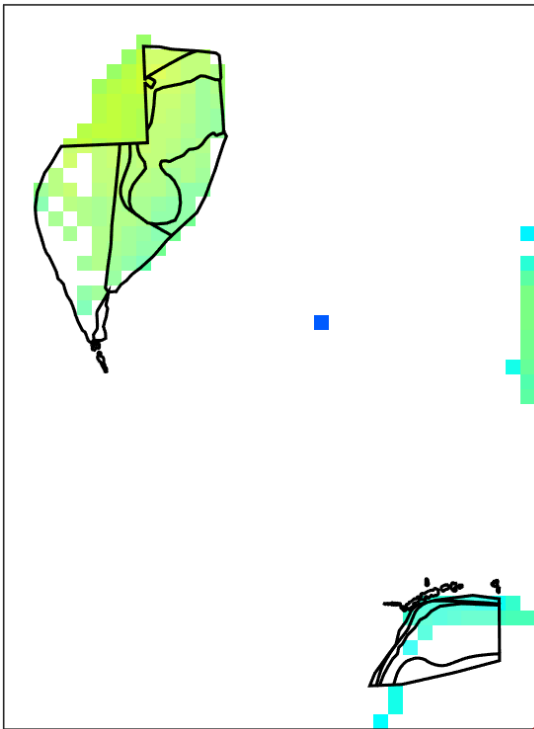
Blue-billed Duck
Oxyura australis
10216



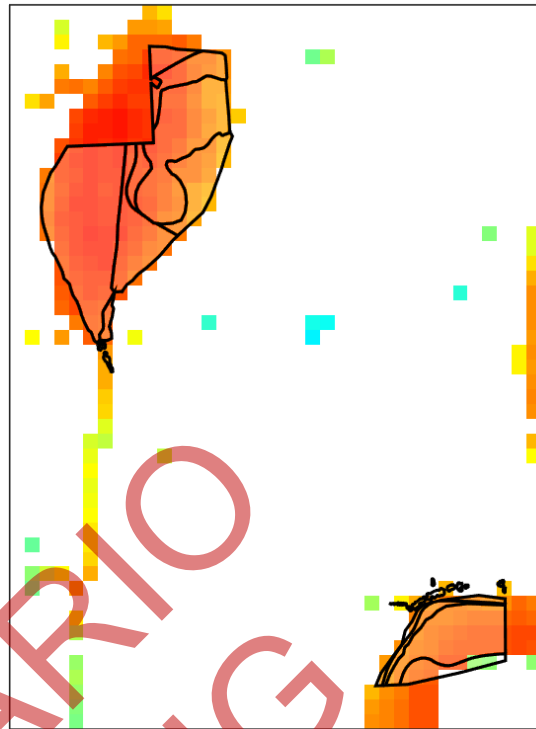
Musk Duck
Biziura lobata
10217



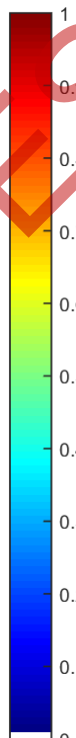
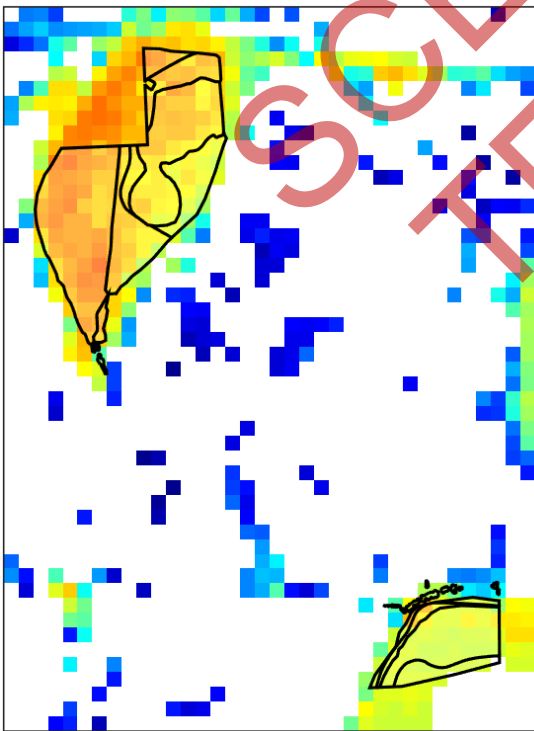
Striped Legless Lizard
Delma impar
12159



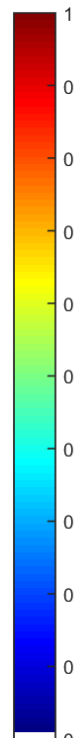
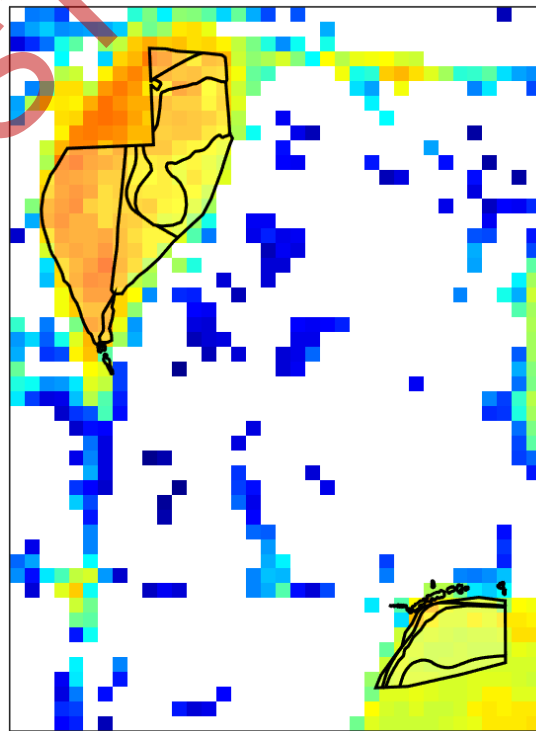
Golden Sun Moth
Synemon plana
15021



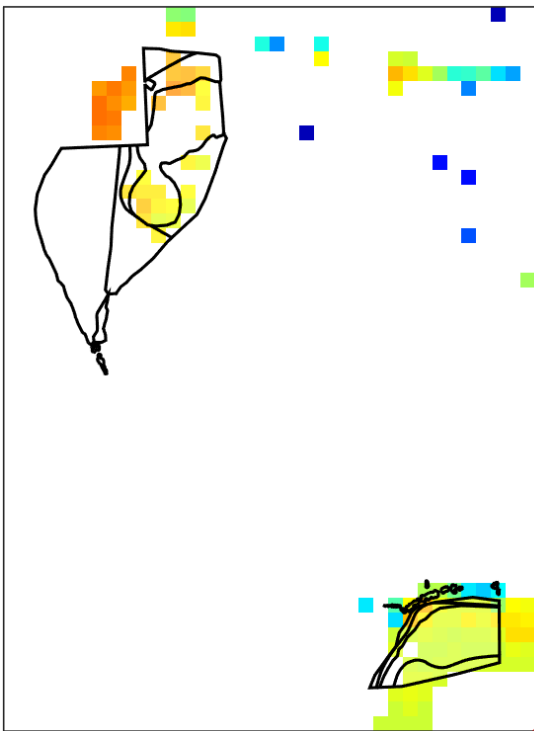
Hairy-pod Wattle
Acacia glandulicarpa
500039



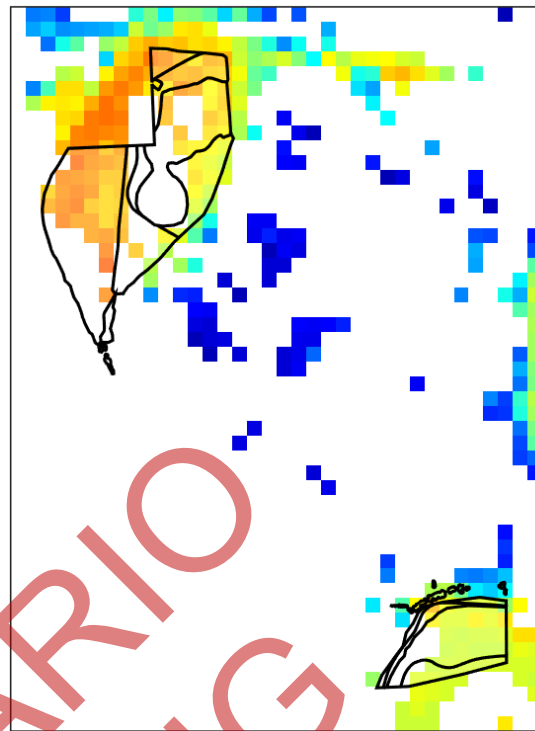
Rock Wattle
Acacia rupicola
500082



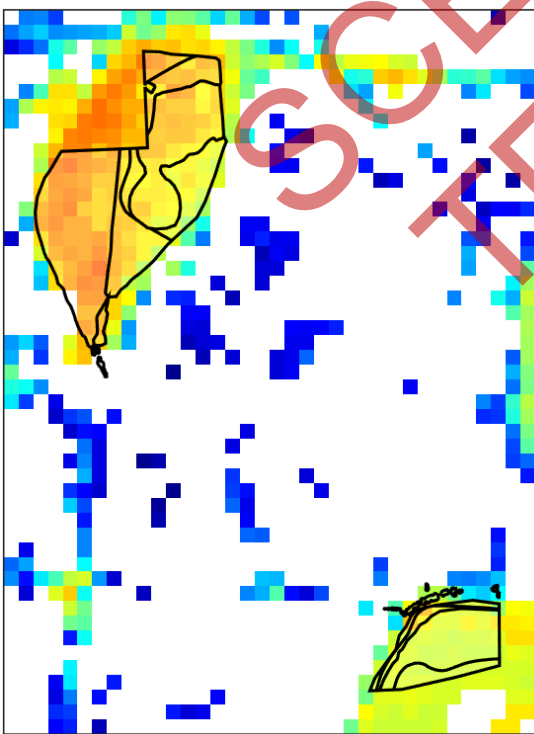
Three-nerve Wattle
Acacia trineura
500096



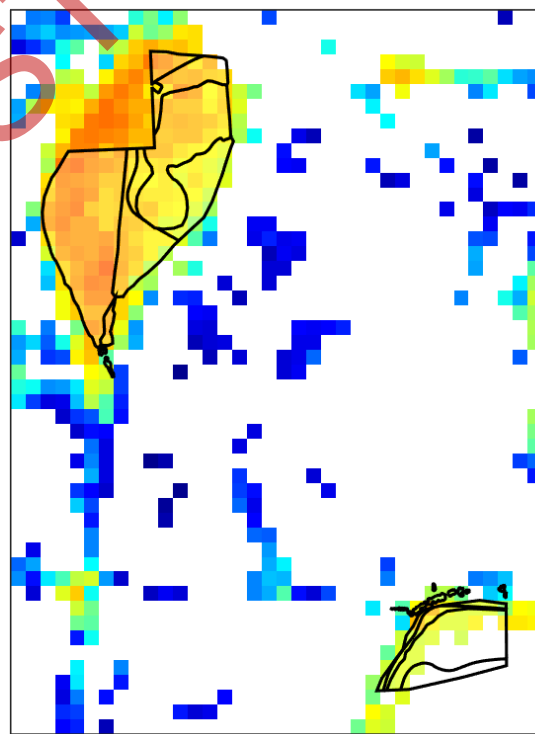
Bramble Wattle
Acacia victoriae subsp. victoriae
500101



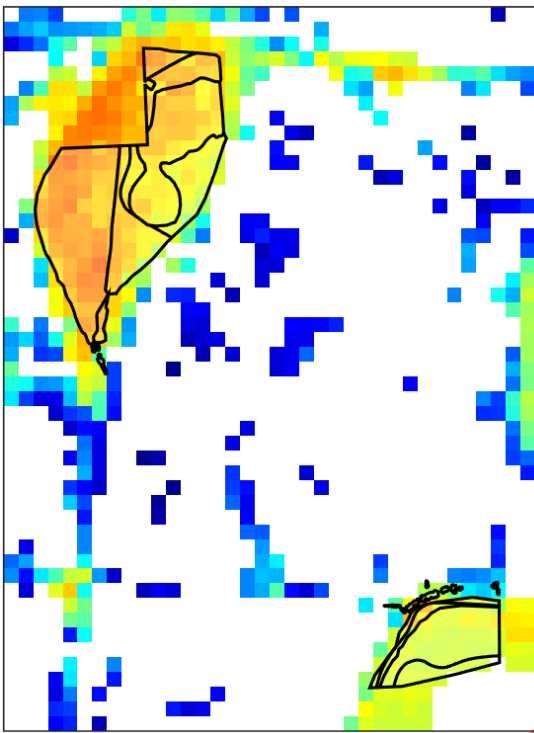
Swamp Sheoak
Casuarina obesa
500682



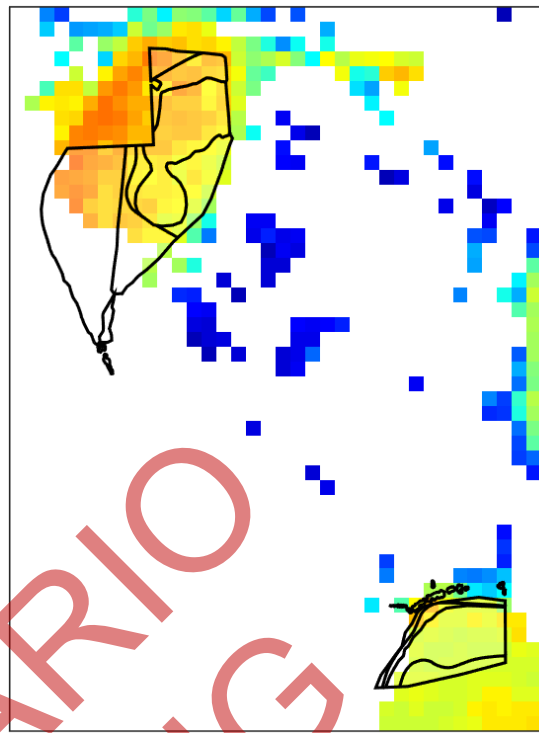
Thorny Bitter-pea
Daviesia pectinata
500998



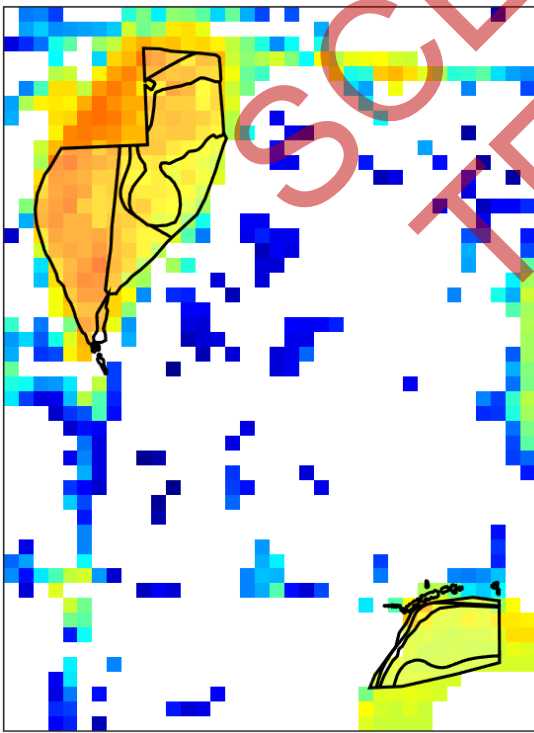
Trailing Hop-bush
Dodonaea procumbens
501090



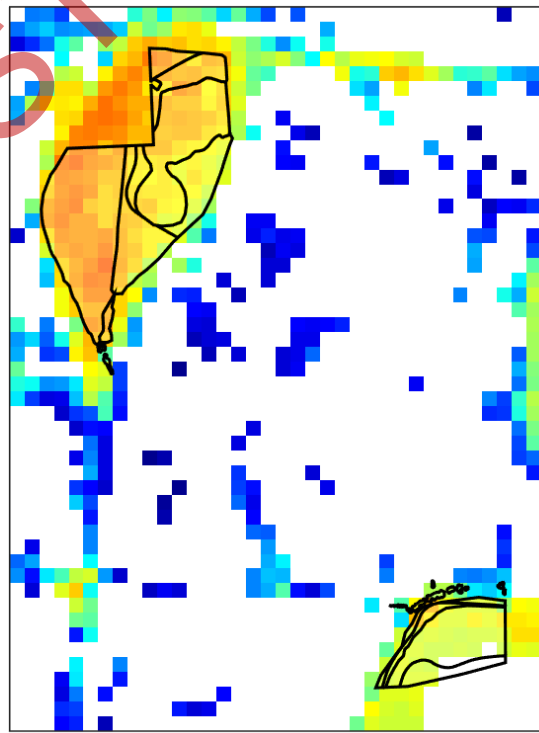
Long Eryngium
Eryngium paludosum
501238



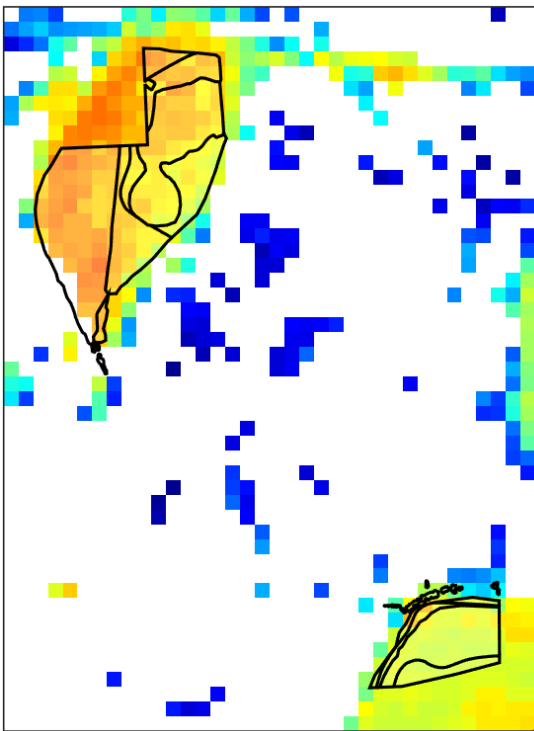
Kamarooka Mallee
Eucalyptus froggattii
501279



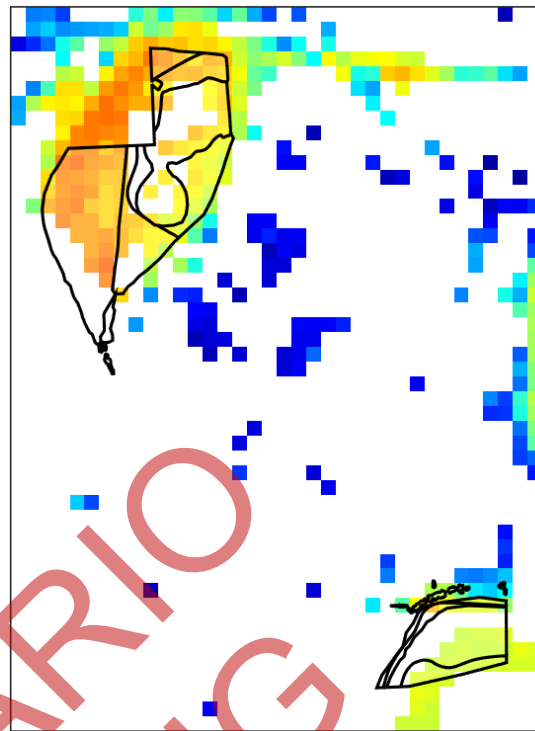
Small-leaf Goodenia
Goodenia benthamiana
501493



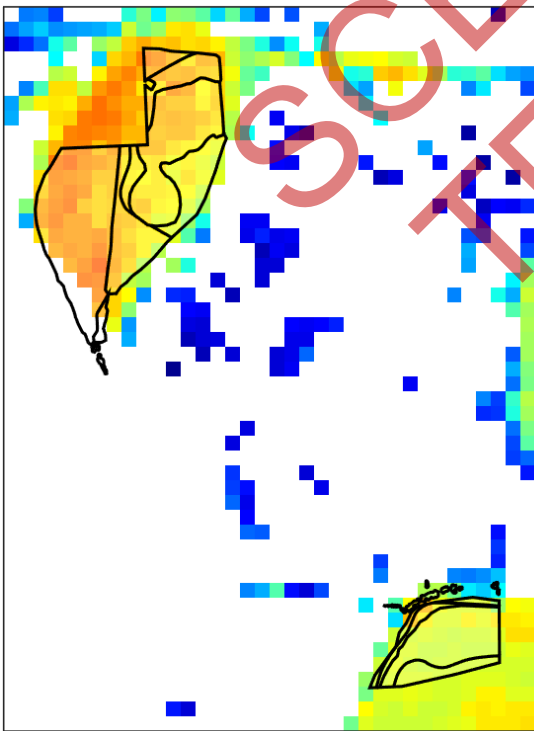
Western Golden-tip
Goodia medicaginea
501518



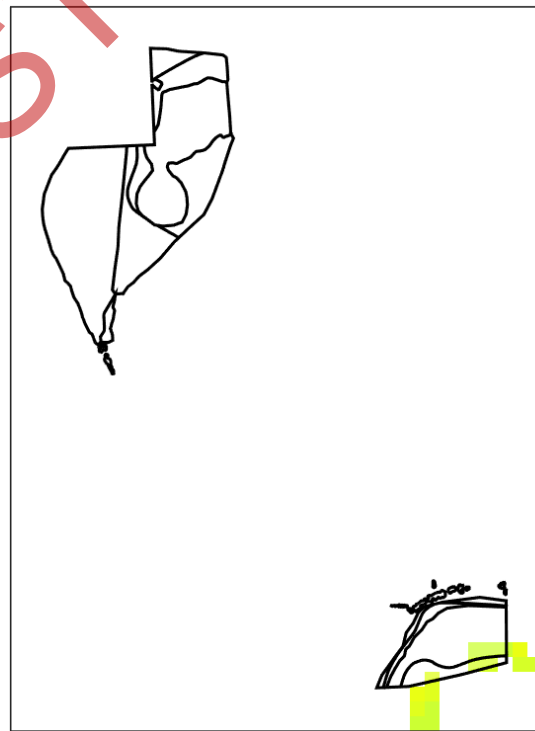
Erect Peppercross
Lepidium pseudopapillosum
501909



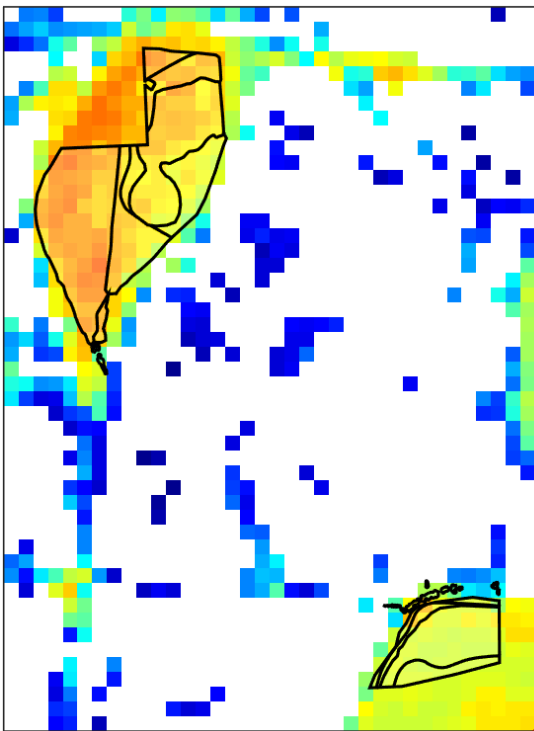
Small Monkey-flower
Elacholoma prostrata
502196



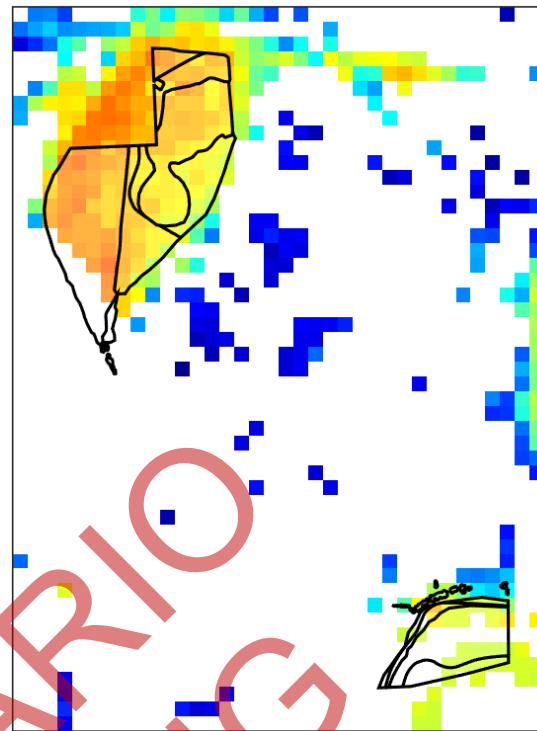
Hoary Bush-pea
Pultenaea daltonii
502843



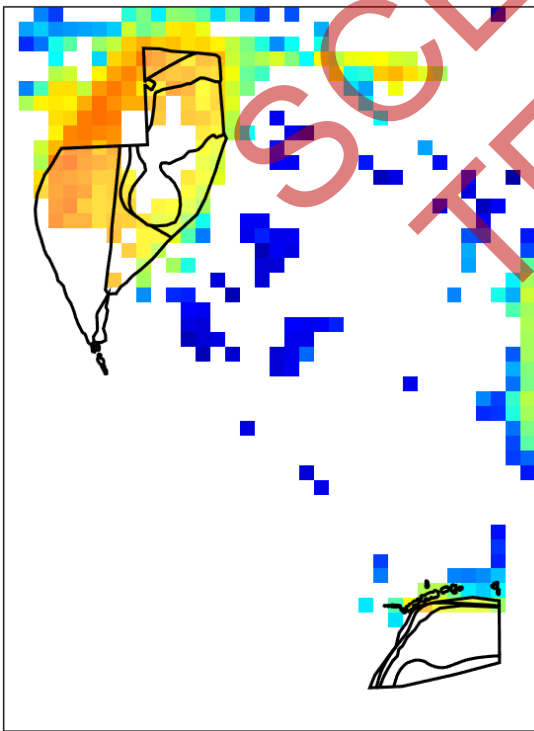
Tiny Bog-sedge
Schoenus nanus
503050



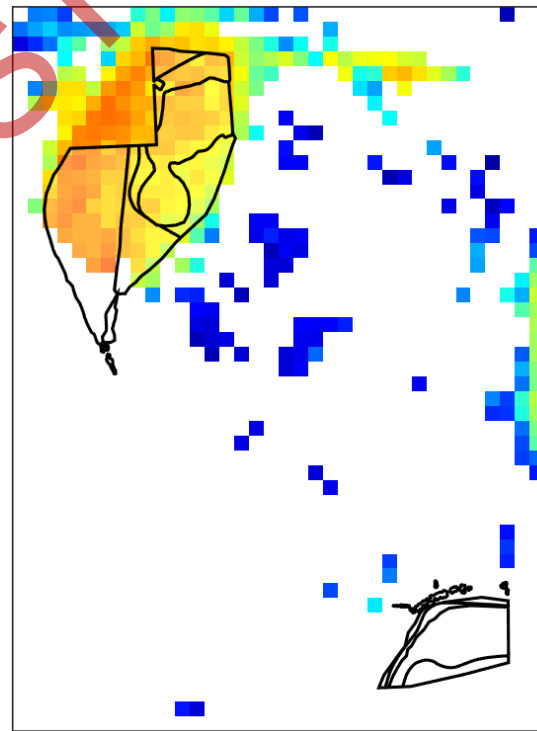
Downy Swainson-pea
Swainsona swainsonioides
503328



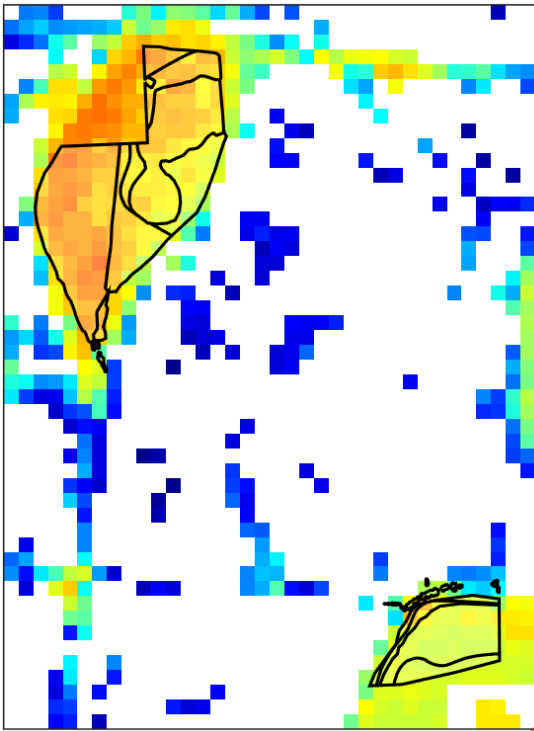
Winged New Holland Daisy
Vittadinia pterochaeta
503542



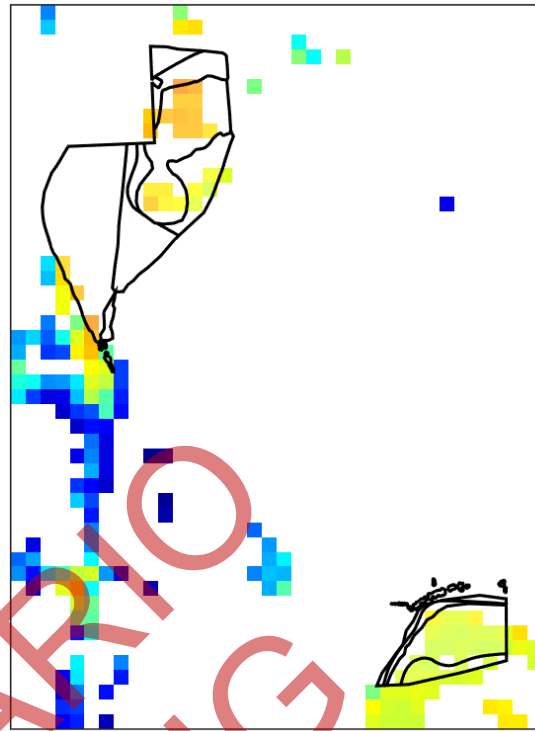
Yellow-tongue Daisy
Brachyscome chrysoglossa
503654



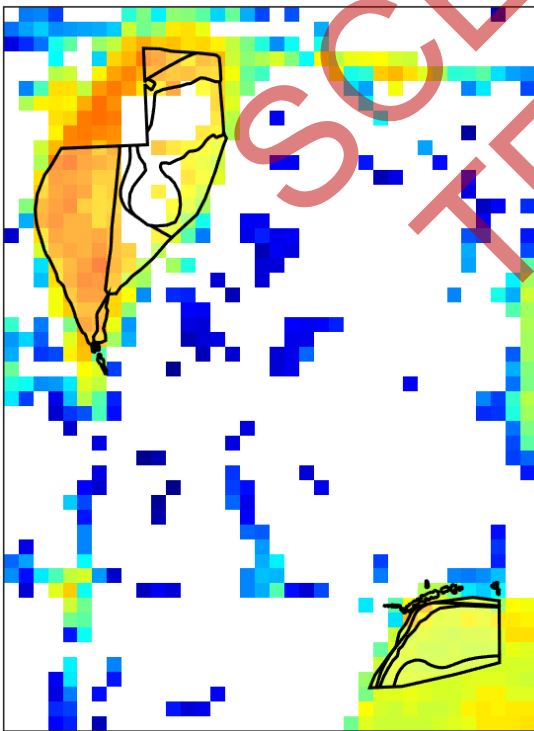
Wimmera Mallee-box
Eucalyptus wimmerensis
503721



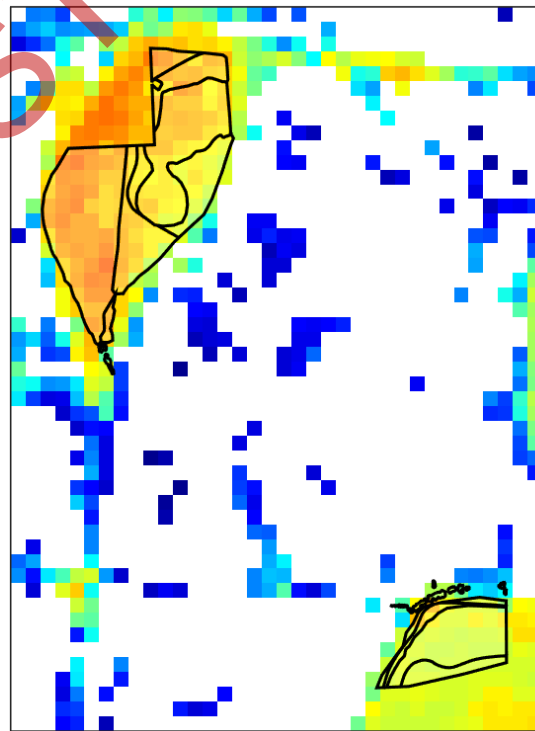
Floodplain Rustyhood
Pterostylis cheraphila
503916



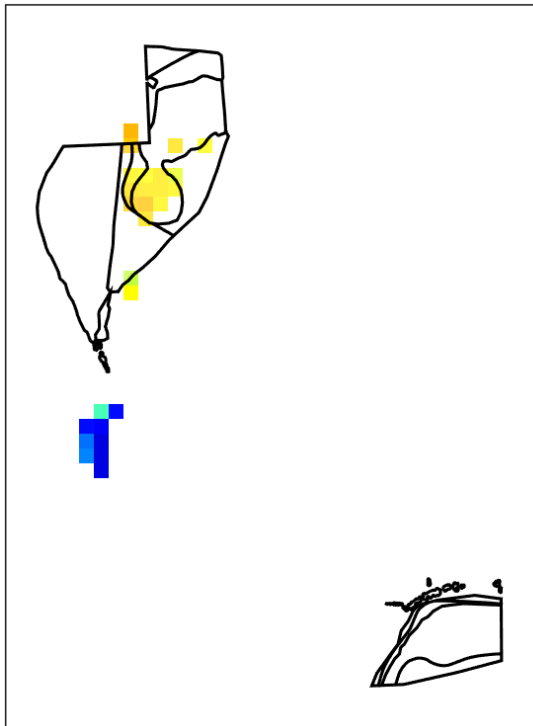
Inland Pomaderris
Pomaderris paniculosa subsp. *paniculosa*
503943



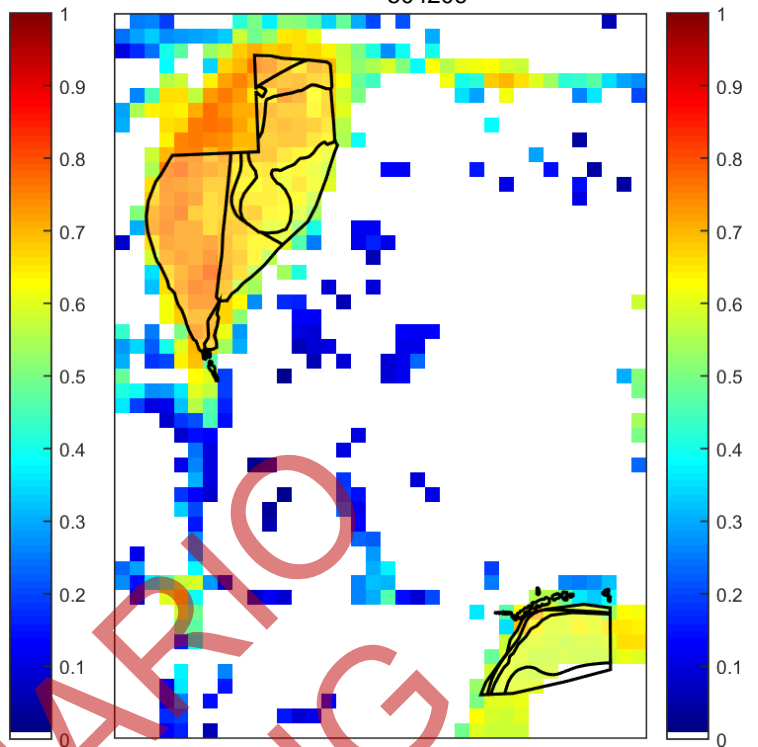
Fine-hairy Spear-grass
Austrostipa puberula
503988



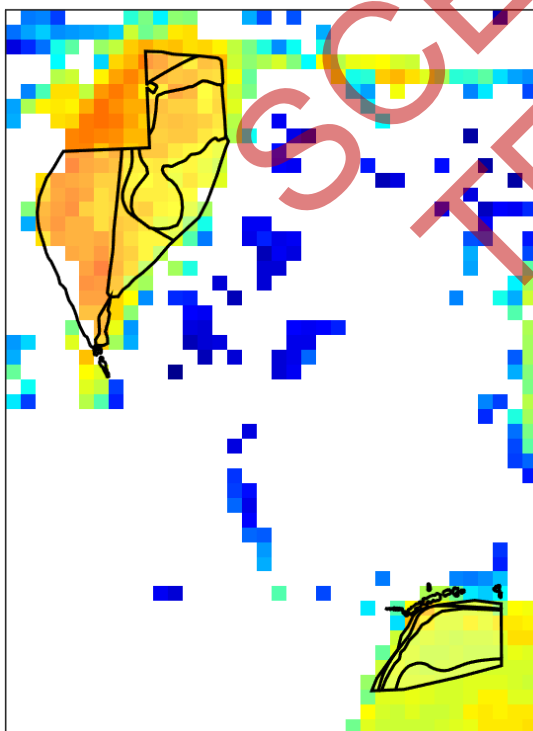
Western Sheoak
Allocasuarina mackliniana subsp. *hirtilinea*
504203



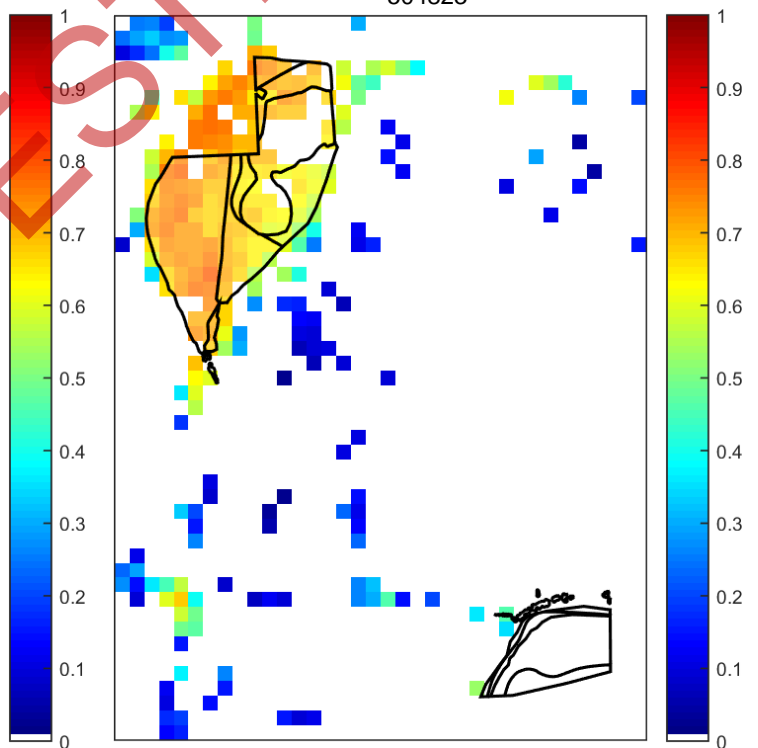
Purple Blown-grass
Lachnagrostis punicea subsp. *punicea*
504206



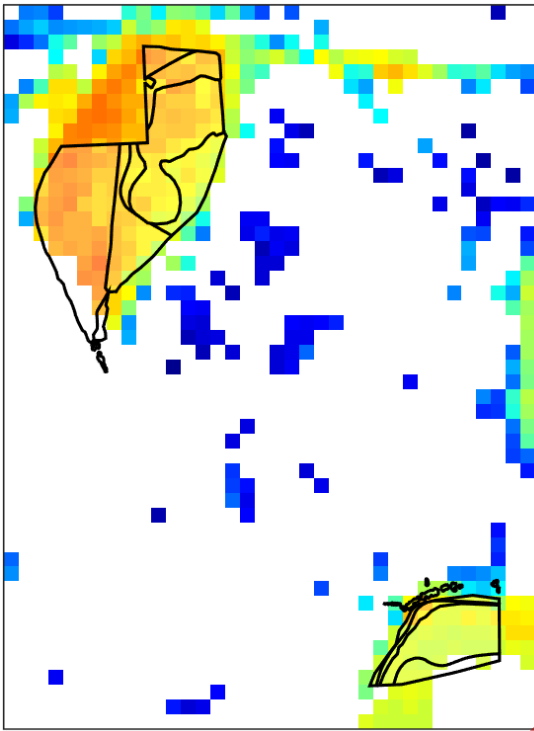
Jericho Wire-grass
Aristida jerichoensis var. *subspinulifera*
504631



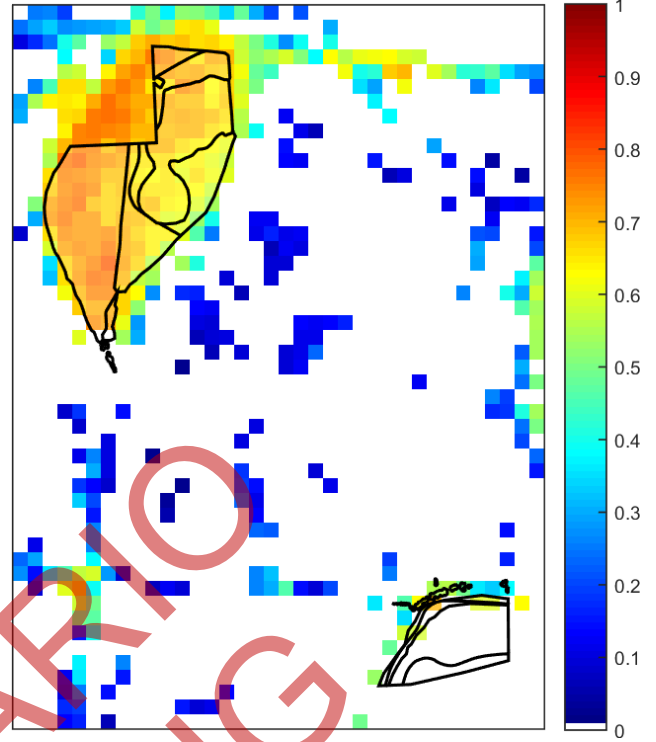
Spiny Rice-flower
Pimelea spinescens subsp. *spinescens*
504823



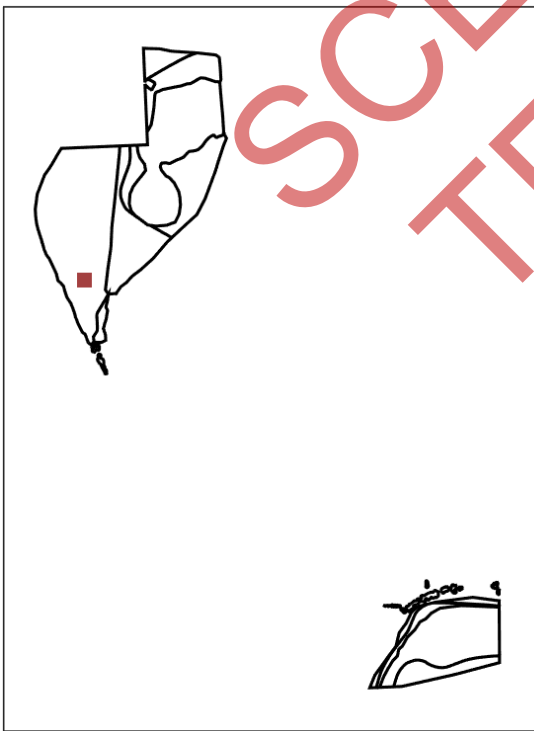
Southern Swainson-pea
Swainsona behriana
504944



Arching Flax-lily
Dianella sp. aff. longifolia (Benambra)
505560



Wimmera Woodruff
Asperula wimmerana
505640



Pale Flax-lily
Dianella sp. aff. longifolia (Riverina)
507399

