

# **South West Loddon Pipeline Project**

**Incorporated Document**

---

**January 2018**

## 1. INTRODUCTION

- 1.1. This document is an incorporated document in the Loddon and Northern Grampians Planning Schemes pursuant to section 6(2)(j) of the *Planning and Environment Act 1987*.
- 1.2. The land identified in this document may be developed and used in accordance with the controls in this document.
- 1.3. The controls in this document prevail over any contrary or inconsistent provision in the Loddon and Northern Grampians Planning Schemes.

## 2. PURPOSE

- 2.1. The purpose of this Incorporated Document is to facilitate the use and development of land described in clause 3 for the purposes of the South West Loddon Pipeline Project (the "Project"). The pipeline associated with the Project is defined as a 'minor utility installation' in the Victoria Planning Provisions.
  - a. The Project consists of the following components:
    - approximately 360 km of underground trunk pipes of 150 mm to 450 mm diameter;
    - approximately 1,050 km of underground distribution pipes of 63 mm to 125 mm diameter;
    - eight pump stations, each with a site area of approximately 20 m x 30 m;
    - four pump stations, each with a site area of approximately 15 m x 20 m;
    - eight pump stations, each with a site area of approximately 10 m x 15 m;
    - Service connections and water meters for connecting customers;
    - a balancing storage site of 300 m x 300 m, created by refurbishment of an existing redundant water storage facility;
    - three water storage tank sites, each of area approximately 40 m x 60 m;
    - a gravel access track of 4 m x 3000 m to one of the water tank sites;
    - power line extensions to pump stations; and
    - firefighting infrastructure including 50 x 22,500 litre fire water tanks and 30 hydrants.
- 2.2. The raw (untreated) water pipeline network will connect the West Waranga Channel with the Wimmera Mallee Pipeline to service rural farming enterprises and lifestyle properties over an area of up to 3,000km<sup>2</sup> with a reticulated, pressurised water supply. It will provide a reliable and secure water supply for stock and domestic purposes to more than 630 properties in the climate-stressed region of Northern Victoria which do not currently have

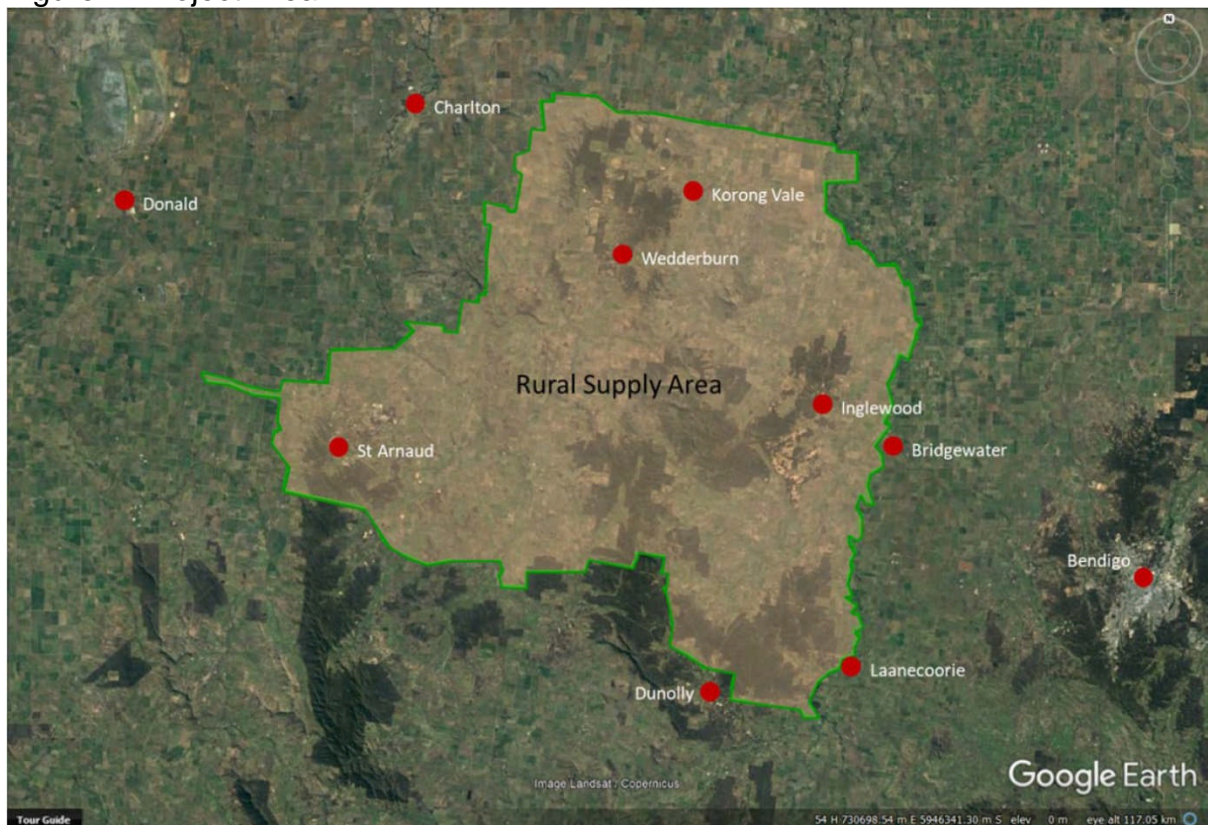
access to a reticulated water supply and which are critically in need of water security.

2.3. The piped water supply will draw on Grampians Wimmera Mallee Water's (GMMWater) existing Wimmera Mallee Pipeline (using water sourced from GMMWater reservoirs including Lake Bellfield) and from the Waranga Western Channel managed by Goulburn Murray Water. The Project includes construction of the pipeline network and all associated infrastructure, such as water storages and pump stations.

### 3. LAND

3.1. This incorporated document applies to the land required for the Project shown as the "Project Area" in Figure 1 of this document.

Figure 1: Project Area



## **4. CONTROL**

4.1. Despite any provision to the contrary or any inconsistent provision in the Loddon Planning Scheme and Northern Grampians Planning Scheme, no planning permit is required for, and nothing in the Planning Schemes operates to prohibit or restrict the development or use of land in the Project Area for the purposes of constructing, operating and maintaining the Project, including (but not limited to):

- (a) Use and development of land for minor utility installation purposes, pump stations, water storage and access tracks as described in clause 2.1 of this document.
- (b) Construction of buildings and/or works associated with the Project.
- (c) Display of construction and directional signage.
- (d) Removing, destroying and lopping trees and removing native vegetation.
- (e) Ancillary buildings and works.

4.2. This control is subject to the conditions in clause 5 of this document.

## **5. CONDITIONS**

### Project Design and Impact Assessment Report

5.1. The use and development permitted by this document must be undertaken in accordance with a Project Design and Impact Assessment Report (PDIA Report) for the Project.

5.2. The PDIA Report is to be prepared in consultation with the Department of Environment, Land, Water and Planning and other relevant agencies, including Parks Victoria, Aboriginal Victoria, the Loddon Shire Council, Northern Grampians Shire Council and North Central Catchment Management Authority.

5.3. Before the use or development permitted by this document commences, the PDIA Report prepared under clause 5.2 must be approved by the Minister for Planning.

5.4. The PDIA Report must refine and document:

- (a) the proposed design, alignment locations and site selection of the trunk pipelines, distribution pipelines and associated infrastructure (including the pump stations, firefighting infrastructure and emergency access points);

- (b) the predicted environmental impacts of the proposed design and alignments, in particular on native vegetation, biodiversity values (such as any listed threatened species and communities), waterway values, Aboriginal cultural heritage values, historic cultural heritage values and current land-uses;
- (c) mapping that clarifies the locations of proposed infrastructure, predicted environmental impacts and key environmental assets and values to be avoided (no go zones);
- (d) investigations and surveys undertaken by suitably qualified persons to inform the prediction of potential environmental impacts of the Project;
- (e) the proposed measures/methods for avoidance and mitigation of the potential impacts on key environmental assets and values identified, including Crown land;
- (f) the proposed framework for environmental management and governance of the Project, that is to help ensure appropriate avoidance, minimisation and regulation of predicted environmental impacts and management of residual uncertainties during construction and operational phases;
- (g) the proposed approach to delivery and staging of the Project's construction; and
- (h) a risk assessment of waterway crossings, to inform decisions on the proposed crossing methods and environmental management to be implemented to avoid and minimise environmental impacts.

#### Environmental Management Framework

5.5. Prior to the commencement of any works a project Environmental Management Framework (EMF) must be completed, in consultation with the Department of Environment, Land, Water and Planning, and submitted to and approved by the Minister for Planning. The EMF must include a statement of all environmental commitments for the Project, including specific measures to address predicted impacts and risks. Moreover, the EMF must address:

- (a) the purpose, scope and description of the Project and its delivery, including the number of project stages to be adopted for its construction;
- (b) the legislative requirements for the Project;
- (c) a description of the environmental documents required for the Project and the review, approval, and change process for each of them;
- (d) the proponent's environmental policy and overview of environmental management system;

- (e) environmental performance standards for the construction and operation of the Project;
- (f) the environmental risk assessment for the Project demonstrating that the potential impacts and risks documented in the PDIA Report (Condition 5.1), are directly linked to appropriate mitigation and management measures;
- (g) roles and responsibilities during the construction and operation of the Project, including a training and awareness program; and
- (h) the environmental monitoring, auditing, reporting and notification procedures for the Project.

The use and development must be carried out in accordance with the endorsed EMF.

#### Construction Environmental Management Plan

- 5.6. Prior to the commencement of any works for a stage of the Project, a Construction Environmental Management Plan must be prepared for that stage, in consultation with the Department of Environment, Land, Water and Planning, the relevant Shire(s) and the North Central Catchment Management Authority, and then submitted to and endorsed by the Secretary to the Department of Environment, Land, Water and Planning.

The use and development must be carried out in accordance with the endorsed Construction Environmental Management Plan.

#### Threatened Species Management Plan

- 5.7. Prior to the commencement of any works, a Threatened Species Management Plan must be prepared for the Project, in consultation with the Department of Environment, Land Water and Planning, and then submitted to and endorsed by the Secretary to the Department of Environment, Land, Water and Planning (as constituted under Part 2 of the *Conservation, Forests and Lands Act 1987*). The plan must include specific measures intended to address predicted impacts and risks on listed threatened species, in particular the Golden Sun Moth, Growling Grass Frog and Bibron's Toadlet.

The use and development must be carried out in accordance with the endorsed Threatened Species Management Plan.

### Native Vegetation Offset Strategy

- 5.8. Prior to the removal of any native vegetation, a Native Vegetation Offset Strategy must be prepared to address predicted losses and detail how offsets will be secured for the Project and then must be submitted to and approved by the Secretary to the Department of Environment, Land, Water and Planning (as constituted under Part 2 of the *Conservation, Forests and Lands Act 1987*).

### Native Vegetation Offset Plan

- 5.9. Prior to the removal of any native vegetation for each stage of the Project, a Native Vegetation Offset Plan for that stage must be prepared and then submitted to and approved by the Secretary to the Department of Environment, Land, Water and Planning (as constituted under Part 2 of the *Conservation, Forests and Lands Act 1987*). The plan must outline the offsets for that stage of the Project and demonstrate that the offsets have been secured to the satisfaction of the Secretary to the Department of Environment, Land, Water and Planning (as constituted under Part 2 of the *Conservation, Forests and Lands Act 1987*).

## **6. EXPIRY**

- 6.1. The control in this document expires if any of the following circumstances applies:
- (i) The development allowed by the control is not started by 31 December 2018.
  - (j) The development allowed by the control is not completed by 31 December 2022.
- 6.2. The Minister for Planning may extend these periods if a request is made in writing before the expiry date or within three months afterwards.