

XURBAN

Urban Design
Landscape Architecture
Visual Assessment

Suite 6, 60 Little Latrobe Street,
Melbourne Victoria 3000

P: 61 3 9642 8040
E: allan.wyatt@xurban.com.au

Layout

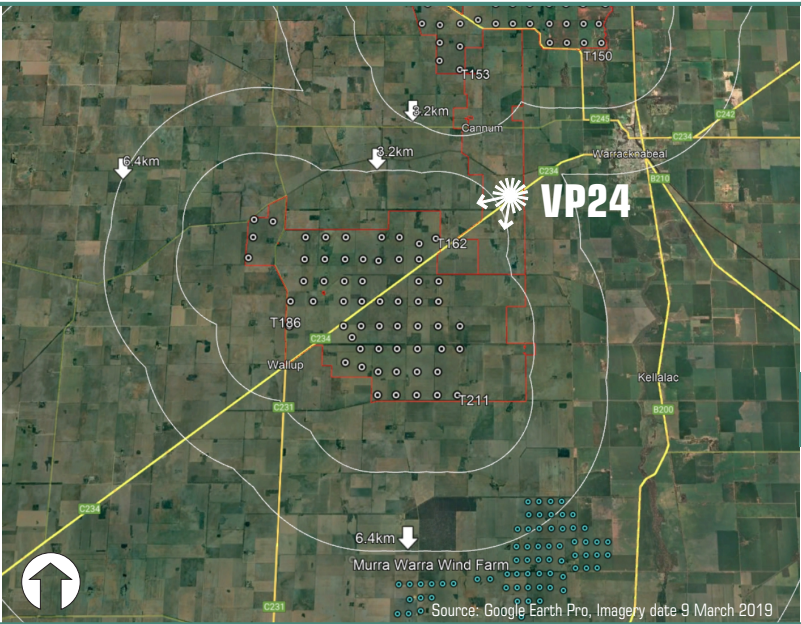
Wind turbine layout - V08-01

Photography data

Photography date: 13 May 2022 at 9:33AM
Camera: Nikon D5
Lens: 60mm

VP 24

Location data reference: Grid Datum: GDA94 Zone 54
Latitude: -36.271164°
Longitude: 142.33735°
Ground level: 120m
Distance to nearest wind turbine: (T162) 4.0km
Bearing 241° approx



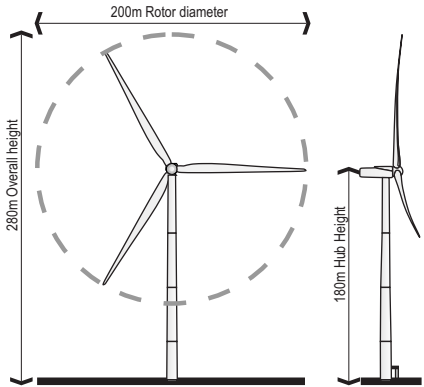
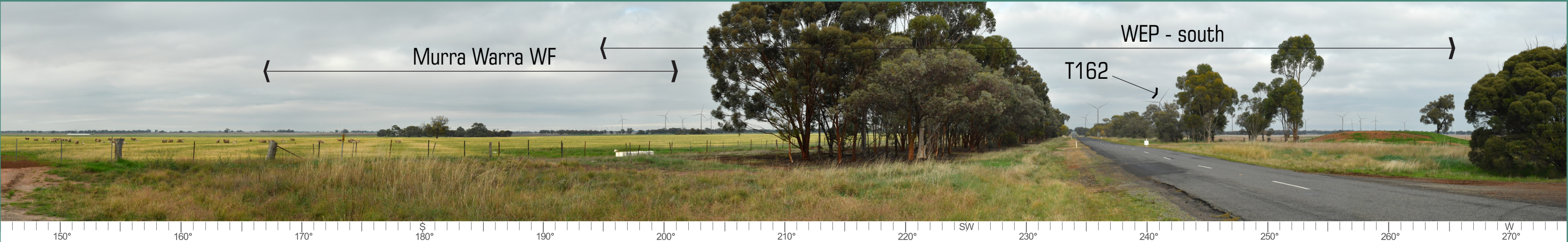
Project:
Warracknabeal Energy Park

Client:
Warracknabeal Energy Park Pty Ltd

Location:
**Borong Highway
South-west of Warracknabeal**

Existing view - Panorama 130° FOV

Date:	23 May 2022	Project No:	15187
Drawing:	Viewpoint 24	Sheet:	24.01



XURBAN

Urban Design
Landscape Architecture
Visual Assessment

Suite 6, 60 Little Latrobe Street,
Melbourne Victoria 3000

P: 61 3 9642 8040
E: allan.wyatt@xurban.com.au

Layout

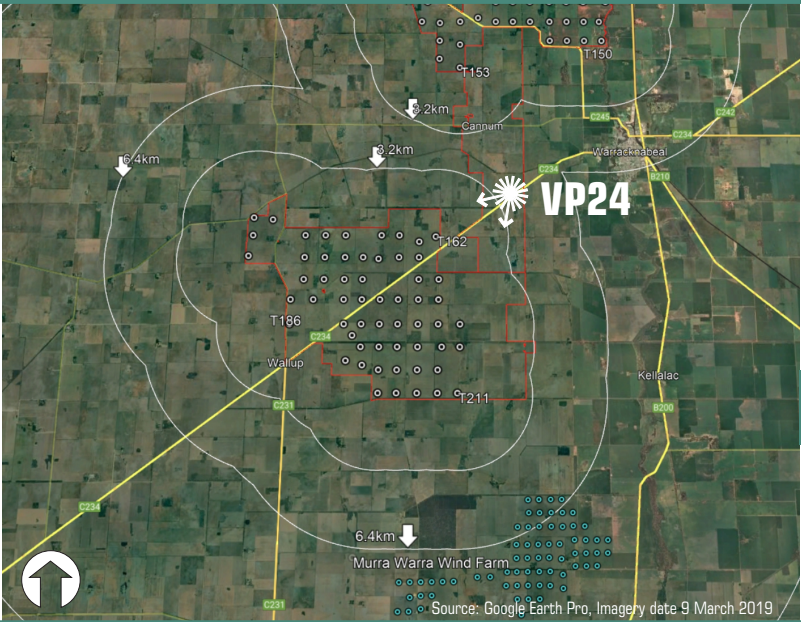
Wind turbine layout - V08-01

Photography data

Photography date: 13 May 2022 at 9:33AM
Camera: Nikon D5
Lens: 60mm

VP 24

Location data reference: Grid Datum: GDA94 Zone 54
Latitude: -36.271164°
Longitude: 142.33735°
Ground level: 120m
Distance to nearest wind turbine: (T162) 4.0km
Bearing 241° approx



Project:
Warracknabeal Energy Park

Client:
Warracknabeal Energy Park Pty Ltd

Location:
**Borong Highway
South-west of Warracknabeal**

Photomontage - Panorama 130° FOV

Date: 23 May 2022 Project No: 15187

Drawing: **Viewpoint 24** Sheet: **24.02**