

1.3 LAKE SURPRISE

Significant Viewing Location

Character Type	3	Western Volcanic Plains
Character Areas visible in view	1.4	Stony Rises & Lava Flows

The Lake Surprise Lookout is located on the edge of the Mount Eccles crater rim and offers views over the Lake and surrounding volcanic features.

The photos to the right document the extent of the viewshed from the Lake Surprise Lookout.

Overall View Significance Rating: Regional





Aesthetic Values

AESTHETIC VALUES				
	Source	Description	Aesthetic Values Rating Considerations (i.e. exemplary, iconic, scarce)	Level of Significance
COMPOSITION (STRUCTURE)	Survey	This view is largely contained within the deep crater of Mount Eccles (Budj Bim) which is filled with the waters of Lake Surprise. The crater is comprised of three smaller craters which have amalgamated over time and are now rimmed with dense vegetation. Geological features, including lava caves, scoria cones and the crater lake, can be viewed from the lookout point and crater walk. Lake Surprise sometimes displays a deep blue colour which is formed from lake sediments and by algae in the water.	This view provides an exemplary outlook over volcanic features.	High (Regional)
COMPOSITION (VISUAL QUALITIES)	Survey	Views in the immediate foreground are of exposed basalt lava rocks and the textured leaves and bark of the Manna Gum. In the middle ground views open up over Lake Surprise and the vegetated crater rim. The texture of the smooth expansive lake contrasts with the jagged lava rocky crater rim and lush green vegetation.	Mt Eccles is easily accessible and the Lake Surprise Lookout offers spectacular views over the lake and crater.	High (Regional)
Overall Aesthetic Significance Rating				Regional

Other Cultural Landscape Values

OTHER VALUES		
	Source	Description
SOCIAL VALUE	Desktop Research	Budj Bim - Mount Eccles has a high visitation as a place of high cultural, geological and historic significance within Victoria. This viewing location is a popular destination for appreciation of the landscape.
CULTURAL VALUES SIGNIFICANCE RATING		State (or higher)

1.4 LAKE LINLITHGOW

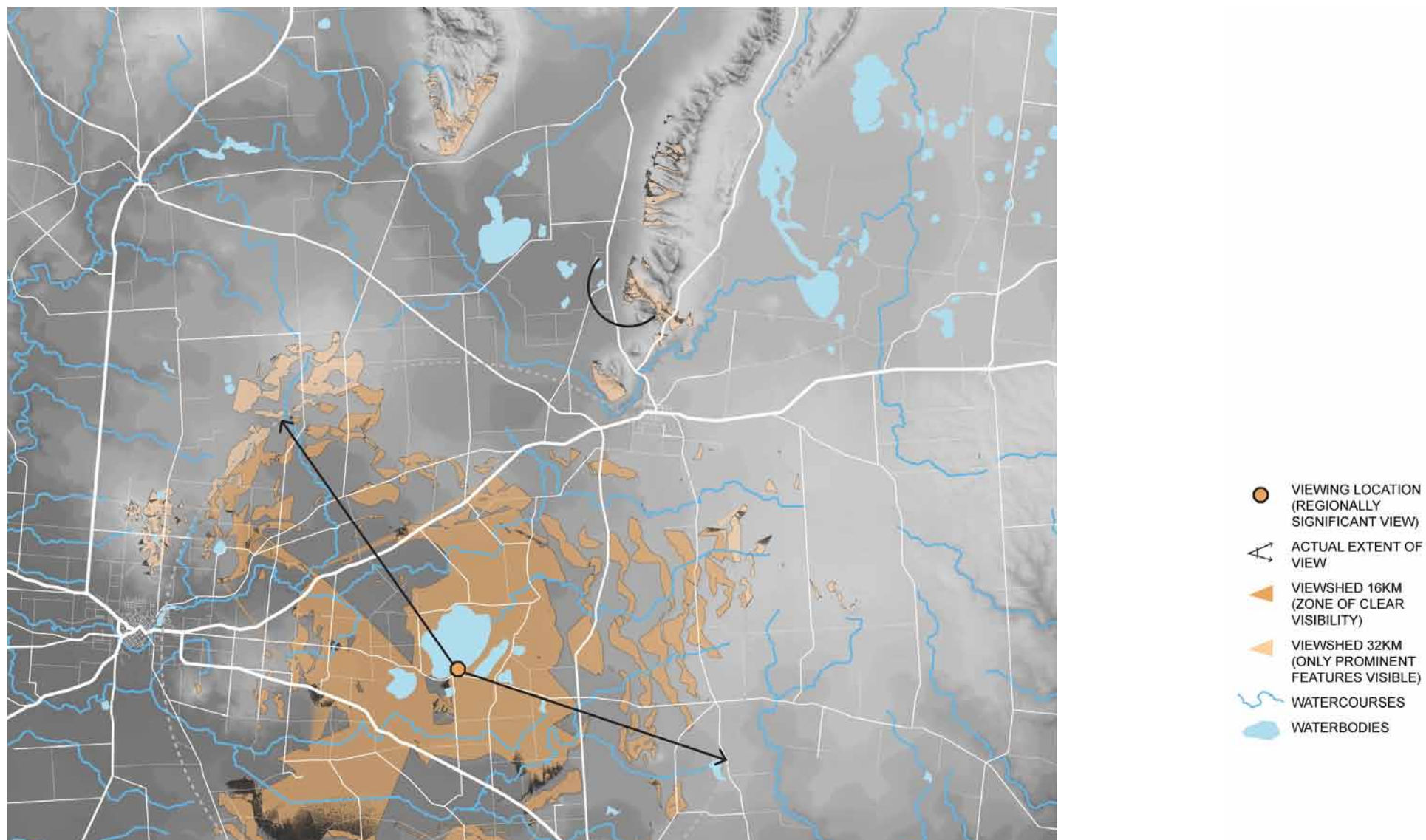
Significant Viewing Location

Character Type	3	Western Volcanic Plains
Character Areas visible in view	1.10	Partially Wooded Agricultural
	6.1	Grampians Ranges (Gariwerd)

Lake Linlithgow is situated outside landscapes of regional or state significance, however an excellent view is available across the Lake to the Grampian Ranges in the north.

Overall View Significance Rating: Regional





Aesthetic Values

AESTHETIC VALUES				
	Source	Description	Aesthetic Values Rating Considerations (i.e. exemplary, iconic, scarce)	Level of Significance
COMPOSITION (STRUCTURE)	Survey	Sweeping views across the flat surface of the lake are terminated in the jagged formation of the Grampian Ranges on the horizon. The foreground features a grassy foreshore dotted with recreational facilities and a boat ramp. Raised lunettes are visible on the eastern shore.	The presence of the lake in the foreground and the Grampians on the horizon combine to create a view that is iconic for the region.	High (Regional)
COMPOSITION (VISUAL QUALITIES)	Survey	Grassy, open shores frame the gently lapping waters of the lake. A history of alternating dry periods and flood are written in the layers of earth that have built up along the shore line. The edges of the lake are ringed in places by reedy banks that contrast with dry mud beds and the surface of the lake. Mount Sturgeon and Mount Abrupt provide distinctive visual contrast and a stunning focus for views across the lake. Their silhouettes are a distinctive feature of the landscape of the Southern Grampians region.	This location provides an exemplary view of the Grampians, with the flat waters of the lake highlighting the looming presence of the mountains in the distance.	High (Regional)
Overall Aesthetic Significance Rating				Regional

Other Cultural Landscape Values

OTHER VALUES		
	Source	Description
SOCIAL VALUE	Tourist information	Lake Linlithgow is a recreational destination and contains a number of facilities such as picnic areas, a boat ramp and barbeques.
ENVIRONMENTAL/ SCIENTIFIC VALUE	Desktop research	Lake Linlithgow is an important resource for waterbirds and is popular with birdwatchers. It is part of a greater wetland system in the area and is prone to running dry during periods of lesser rainfall.
HISTORICAL VALUE	Desktop Research	The impact of the view of the ranges near the lake is noted in George Augustus Robinson's (Chief Protector of Aborigines 1839-1849) journal: "a short distance before reaching the lake we passed over an elevation from which we had a magnificent view: Abrupt and Sturgeon 10 miles distant..."
CULTURAL VALUES SIGNIFICANCE RATING		Regional



Bank of Lake Linlithgow, looking towards Dunkeld / Grampians. Photo courtesy of Tracy Kruger

1.5 MOUNT LEURA

Significant Viewing Location

Character Type	1	Western Volcanic Plain
	1.2	Large Shallow & Deep Crater Lakes
Character Areas visible in view	1.3	Volcanic Agricultural
	1.5	Lakeside Stony Rises

Mount Leura is a complex eruption point just outside Camperdown. A designated viewing location at the top is accessible by vehicle and includes interpretive signage. The summit allows extensive views across the landscape of the volcanic plains, including the vast inland lakes and numerous volcanic rises.

Overall View Significance Rating: State (or higher)

A detailed significance assessment is provided over the following pages.

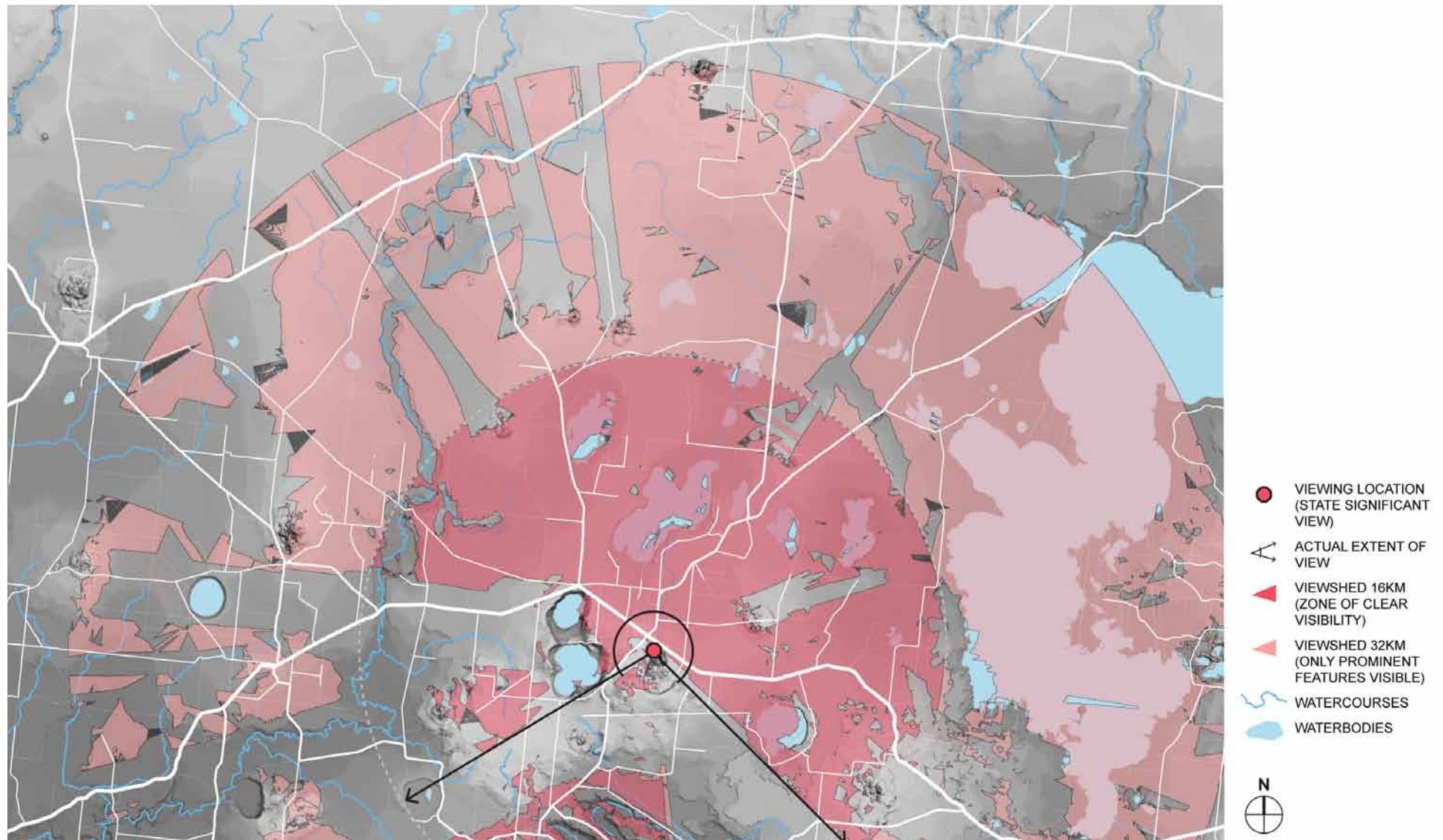


Mount Sugarloaf



View from Mount Leura over Camperdown and towards Lake Colongaluc

Viewshed Map: Mount Leura



Aesthetic Values

AESTHETIC VALUES				
	Source	Description	Aesthetic Values Rating Considerations (i.e. exemplary, iconic, scarce)	Level of Significance
COMPOSITION (STRUCTURE)	Survey	<p>Views from the summit of Mount Leura are panoramic, taking in much of the surrounding landscape for almost 360°, and occasionally framed by vegetation growing in the foreground.</p> <p>Views stretch out to a seeming infinity over the flat landscape, except for where the background and distant horizon are punctuated with the rounded forms of the numerous volcanic cones and rises. To the northwest the Grampians Ranges can be seen faintly on the horizon.</p>	The vast panoramas across the geological features and volcanic lakes contain numerous stand out features making it an outstanding viewing experience of the region.	Exceptional (State or higher)
COMPOSITION (VISUAL QUALITIES)	Survey	<p>The foreground features shrubby vegetation that occasionally frames views, before it drops down sharply to reveal the sweeping plain that surrounds Mount Leura. The spectacular conical formation of Mount Sugarloaf is a distinctive part of the view, as is the township of Camperdown nestled in Mount Leura's shadow.</p> <p>Dark green shelterbelts create short geometric repeats across the landscape beyond, which contrast with the vast paddocks and organic outlines of the broad and reflective inland lakes. The scattered volcanic rises create a high level of visual interest for the viewer, displaying a variety of shapes and form.</p>	The sense of vastness and viewing distance available is exceptional and a key part of the exploration of the volcanic region of western Victoria.	Exceptional (State or higher)
Overall Aesthetic Significance Rating				State (or higher)

Other Cultural Landscape Values

OTHER VALUES		
	Source	Description
SOCIAL VALUE	Desktop Research	Mount Leura Complex has high value as a tourist attraction and for educational purposes. The summit of Mount Leura is easily accessible and the lookout provides extensive panoramic views of the surrounding landscape.
	Parks Victoria	The visitation attracted by the Mount Leura Complex has significant economic benefit for the local area.
ENVIRONMENTAL VALUE	Survey	The lookout is an important opportunity to understand the environment and volcanic origins of the region.
HISTORICAL VALUE	National Trust	The proximity of Mount Leura to Camperdown allows a complete view of the township, showing how this important Western District centre was formed around road and rail links.
CULTURAL VALUES SIGNIFICANCE RATING		State (or higher)

1.6 RED ROCK

Significant Viewing Location

Character Type	1	Western Volcanic Plain
	1.2	Large Shallow & Deep Crater Lakes
Character Areas visible in view	1.3	Volcanic Agricultural
	1.5	Lakeside Stony Rises
	1.11	Winchelsea Western Plain

The Red Rock Complex lies to the east of Lake Corangamite and features a collection of volcanic features. The summit of the main volcanic rise has two viewing locations that are accessible by car and contain interpretive information. These look out over the vast inland lakes and volcanic plains.

Overall View Significance Rating: State (or higher)

A detailed significance assessment is provided over the following pages.



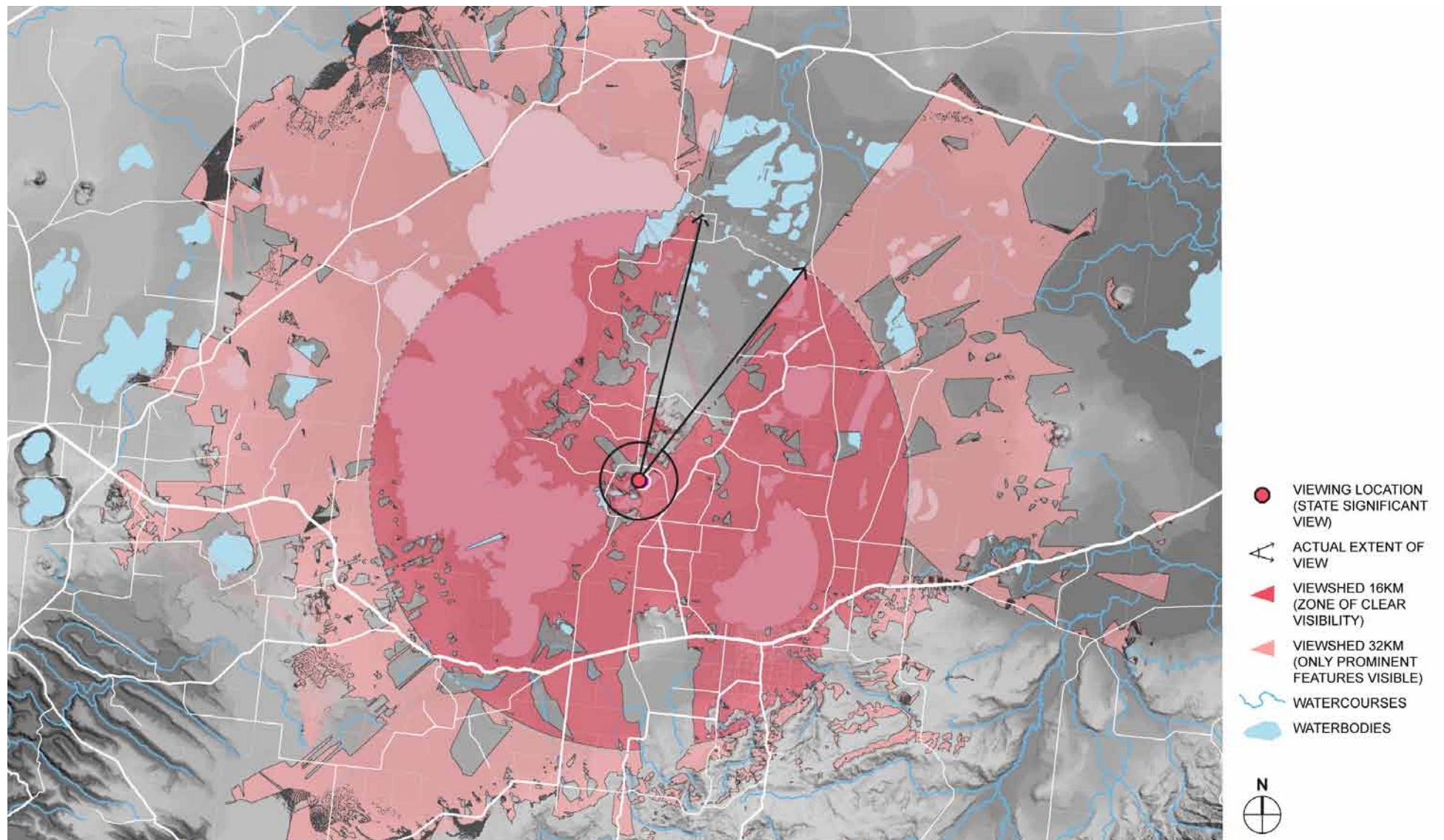
View from the eastern lookout



View towards Lake Corangamite from the western lookout



Viewshed Map: Red Rocks



Aesthetic Values

AESTHETIC VALUES				
	Source	Description	Aesthetic Values Rating Considerations (i.e. exemplary, iconic, scarce)	Level of Significance
COMPOSITION (STRUCTURE)	Survey	<p>Two lookouts are available towards the east and west. Views are panoramic and expansive and demonstrate the vastness of the Red Rock Complex and the array of volcanic features. Views take in the distant volcanic features such as Mount Elephant, Mount Porndon and Mount Leura.</p> <p>Flat farmlands are interspersed with shelterbelts and contrast against the reflective surface of the large inland lakes that include Lake Colac, Lake Beecac and the huge saltwater expanse of Lake Corangamite.</p>	The vast panoramas across the geological features and volcanic lakes contain numerous stand out features making it an outstanding viewing experience of the region.	State (or higher)
COMPOSITION (VISUAL QUALITIES)	Survey	<p>The Red Rocks area is one of the most complex eruption points in the Victorian Volcanic Plain, and the fore and middle ground of views from the two lookout points feature a textured landscape of scoria cones, tuff rings and volcanic mairs. Exposed red rocks contrast against the grassed volcanic slopes. The landscape of hummocky stoney rises around the southern edge of Lake Corangamite is visible as a rough texture in the topography.</p> <p>Views stretch out across the flat agricultural plains and vast inland lakes, and the horizon is occasionally interrupted by the conical rises of distant volcanos.</p>	The sense of vastness and viewing distance available is exceptional and should be part of any exploration of the volcanic region of western Victoria.	State (or higher)
Overall Aesthetic Significance Rating				State (or higher)

Other Cultural Landscape Values

OTHER VALUES		
	Source	Description
SOCIAL VALUE	Tourist Information	The Red Rock Reserve and lookout is a local visitor attraction and provides an important opportunity to view the broader area. In this way it makes a contribution to the local tourism economy.
ENVIRONMENTAL VALUE	Survey	The lookout allows appreciation and understanding of this exemplary volcanic landscape.
CULTURAL VALUES SIGNIFICANCE RATING		State (or higher)

1.7 LAKES GNOTUK & BULLEN MERRI

Significant Viewing Location

Character Type	1	Western Volcanic Plains
	1.1	Paddocks & Cones
Character Areas visible in view	1.2	Large Shallow & Deep Crater Lakes
	1.3	Volcanic Agricultural
	1.4	Lava Flows & Stony Rises

Sadlers Road spans the high saddle of land that separates Lakes Gnotuk and Bullen Merri. While there are no designated viewpoints along the road, there are two opportunities to pull over and view the impressive craters filled by the lakes.

The view cones on the map opposite describe the predominant extents of the views, as visible on site. The south western extent of the view from Lake Gnotuk is visible over a small rise in the topography, and is not a dominant feature of the view across the lake.

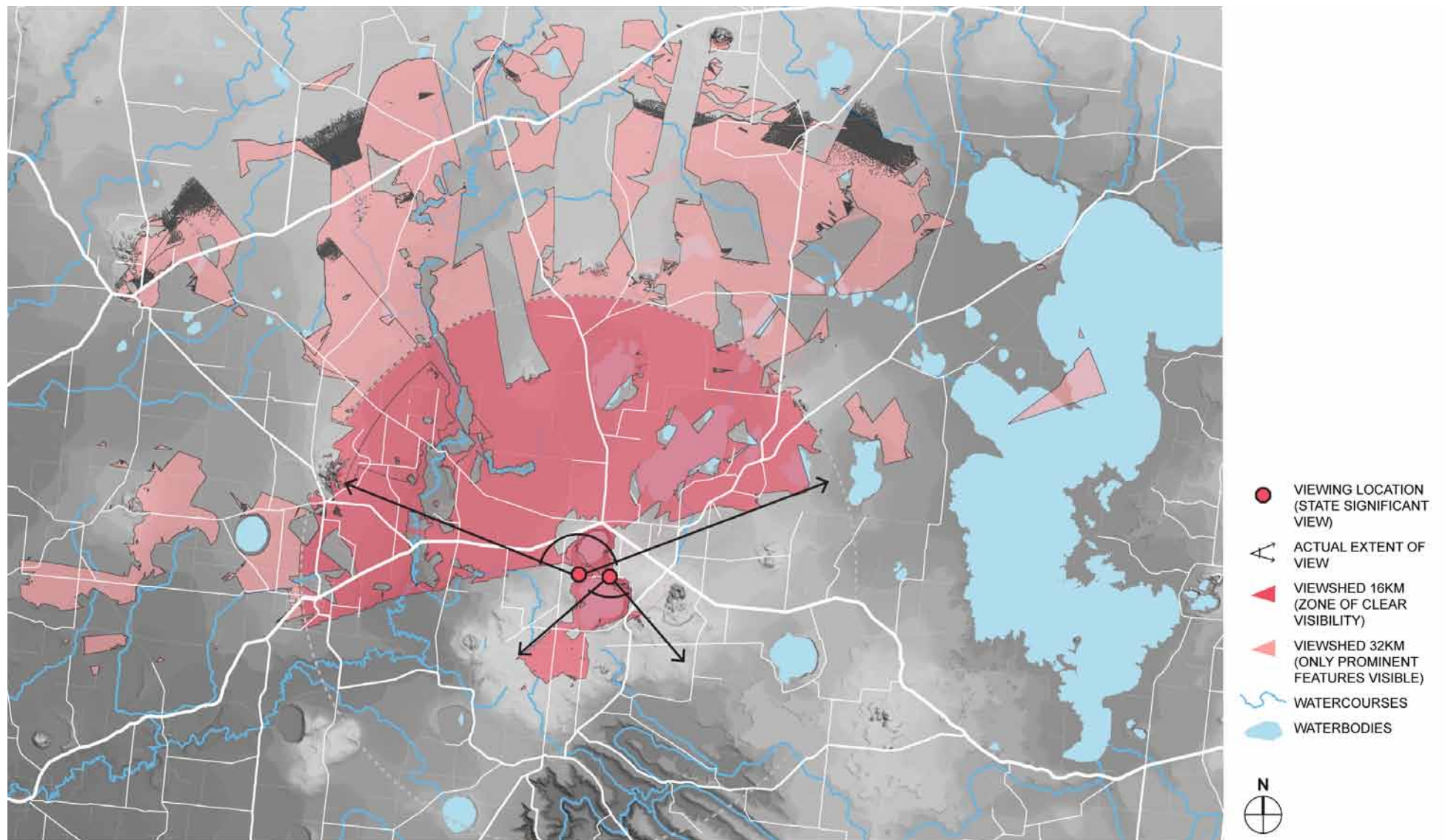
Overall View Significance Rating: State



Lake Gnotuk, view



Lake Bullen Merri: View is predominantly contained within the crater of the marr.



Aesthetic Values

AESTHETIC VALUES				
	Source	Description	Aesthetic Values Rating Considerations (i.e. exemplary, iconic, scarce)	Level of Significance
COMPOSITION (STRUCTURE)	Survey	There are two points along Sadlers Road that traverse the narrow strip of land between the lakes and allow for expansive views across both. The deep, still waters of these lakes fill the middle ground, while beyond the crater walls the flat volcanic plain dotted with dramatic conical rises stretches out to a distant horizon.	The high elevations on the crater walls offer exemplary views over the volcanic lakes. The location of the two mairs and their twin formation is rare.	Exceptional (State)
COMPOSITION (VISUAL QUALITIES)	Survey	<p>High elevations of the tuff rings surrounding the water bodies allow for expansive views of the lakes. The foreground on either side of the road drops steeply down the crater wall before sweeping across the still waterbodies. Dark vegetation contrasts with the grassy pastoral land and the straight edges of shelterbelt planting highlights the form of the craters. Built form and rural development is visible within the crater rims, however these are recessive features of the views. The water in the lakes is a striking shade of deep blue.</p> <p>The lakes as viewed from these locations have been the subject of many works of art.</p>	The twin formation of Gnotuk and Bullen Merri is unique and therefore a scarce feature of the Victorian volcanic plain.	Exceptional (State)
Overall Aesthetic Significance Rating				State

Other Cultural Landscape Values

OTHER VALUES		
	Source	Description
SOCIAL VALUE	Research & Consultation	The views of Lakes Gnotuk and Bullen Merri have been depicted in numerous artworks, from early landscape paintings by artists such as Von Geuarard to more contemporary works. Recently, a show was curated featuring artworks solely inspired by Lake Gnotuk, that travelled rural Victoria.
	Survey	Interpretive information in this viewing location would assist in understanding the rich heritage of this significant landscape.
ENVIRONMENTAL VALUE	Survey	The lookout allows appreciation and understanding of this exemplary volcanic landscape.
CULTURAL VALUES SIGNIFICANCE RATING	State	

1.6 RED ROCK

Significant Viewing Location

Character Type	1	Western Volcanic Plain
	1.2	Large Shallow & Deep Crater Lakes
Character Areas visible in view	1.3	Volcanic Agricultural
	1.5	Lakeside Stony Rises
	1.11	Winchelsea Western Plain

The Red Rock Complex lies to the east of Lake Corangamite and features a collection of volcanic features. The summit of the main volcanic rise has two viewing locations that are accessible by car and contain interpretive information. These look out over the vast inland lakes and volcanic plains.

Overall View Significance Rating: State (or higher)

A detailed significance assessment is provided over the following pages.



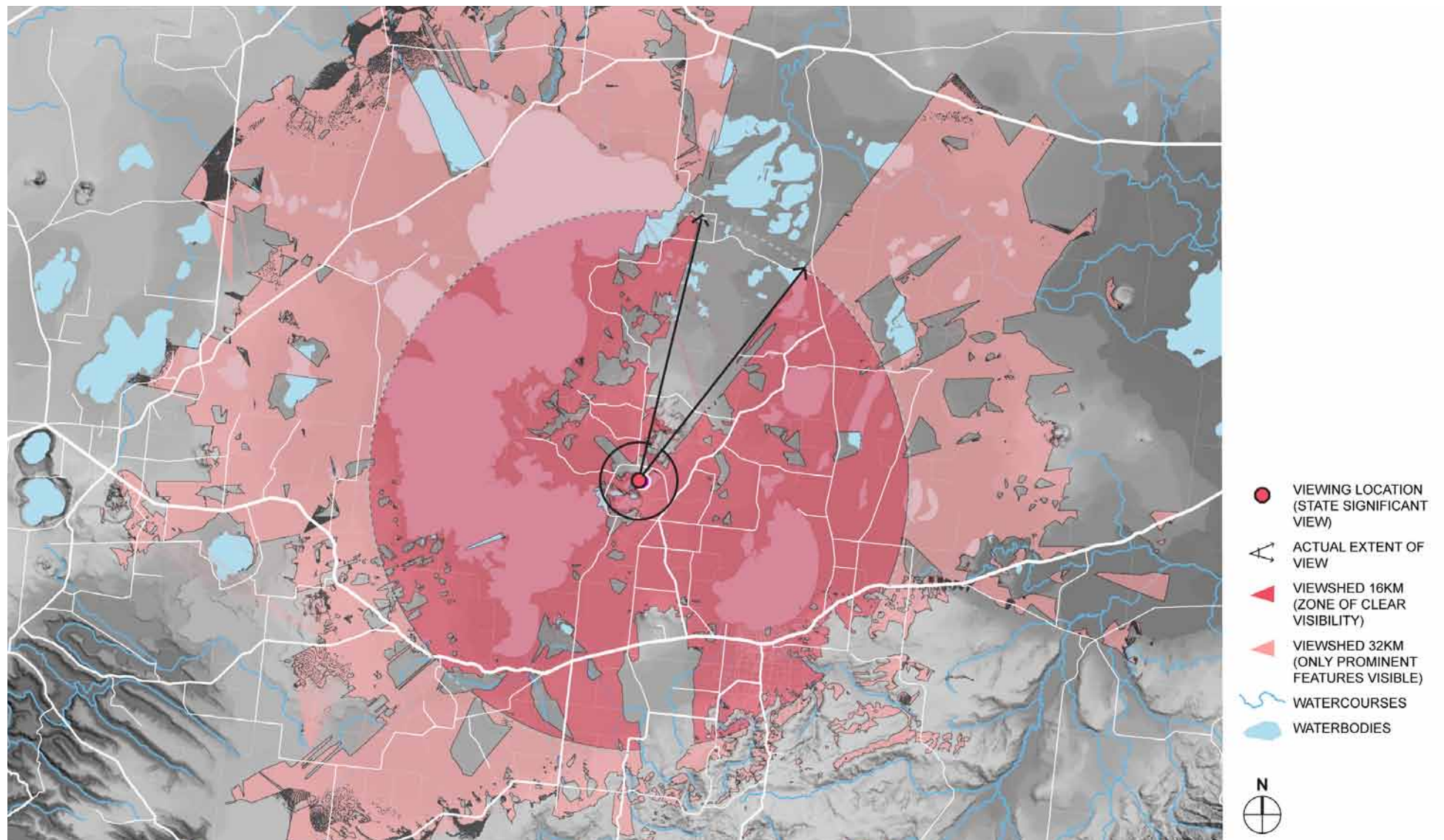
View from the eastern lookout



View towards Lake Corangamite from the western lookout



Viewshed Map: Red Rocks



Aesthetic Values

AESTHETIC VALUES				
	Source	Description	Aesthetic Values Rating Considerations (i.e. exemplary, iconic, scarce)	Level of Significance
COMPOSITION (STRUCTURE)	Survey	<p>Two lookouts are available towards the east and west. Views are panoramic and expansive and demonstrate the vastness of the Red Rock Complex and the array of volcanic features. Views take in the distant volcanic features such as Mount Elephant, Mount Porndon and Mount Leura.</p> <p>Flat farmlands are interspersed with shelterbelts and contrast against the reflective surface of the large inland lakes that include Lake Colac, Lake Beecan and the huge saltwater expanse of Lake Corangamite.</p>	The vast panoramas across the geological features and volcanic lakes contain numerous stand out features making it an outstanding viewing experience of the region.	State (or higher)
COMPOSITION (VISUAL QUALITIES)	Survey	<p>The Red Rocks area is one of the most complex eruption points in the Victorian Volcanic Plain, and the fore and middle ground of views from the two lookout points feature a textured landscape of scoria cones, tuff rings and volcanic mounds. Exposed red rocks contrast against the grassed volcanic slopes. The landscape of hummocky stony rises around the southern edge of Lake Corangamite is visible as a rough texture in the topography.</p> <p>Views stretch out across the flat agricultural plains and vast inland lakes, and the horizon is occasionally interrupted by the conical rises of distant volcanoes.</p>	The sense of vastness and viewing distance available is exceptional and should be part of any exploration of the volcanic region of western Victoria.	State (or higher)
Overall Aesthetic Significance Rating				State (or higher)

Other Cultural Landscape Values

OTHER VALUES		
	Source	Description
SOCIAL VALUE	Tourist Information	The Red Rock Reserve and lookout is a local visitor attraction and provides an important opportunity to view the broader area. In this way it makes a contribution to the local tourism economy.
ENVIRONMENTAL VALUE	Survey	The lookout allows appreciation and understanding of this exemplary volcanic landscape.
CULTURAL VALUES SIGNIFICANCE RATING		State (or higher)