



# SOUTH WEST VICTORIA LANDSCAPE ASSESSMENT STUDY

## Significant Landscapes of South West Victoria

June 2013

# SIGNIFICANCE OVERVIEW

---

At the outset of the Significance Assessment stage of the project, broad 'significance investigation areas' were defined (shaded in grey on the Significant Landscapes and Views Map overleaf), based on previous character work, field surveys, information gained from secondary sources, and community feedback.

These broad landscape areas were then examined in detail and an assessment of their cultural landscape values was undertaken (refer to the methodology outlined in the Regional Overview Report). These detailed assessments led to the designation of some landscapes as regionally significant, and others of state significance (or higher, though a rating of 'national' significance has not been attributed due to the scale/context of the study, and the inability to justify such a rating through comparative analysis.)

The detailed assessments of the landscapes are contained in the Landscape Significance Assessment Papers within this document.

An assessment of the most significant views throughout the study area has also been undertaken. Viewing locations were chosen based on the fact that they featured a view of a regionally or state significant landscape, and substantially met a number of other 'selection considerations' that are outlined and explained in the methodology outline in the Regional Overview Report.

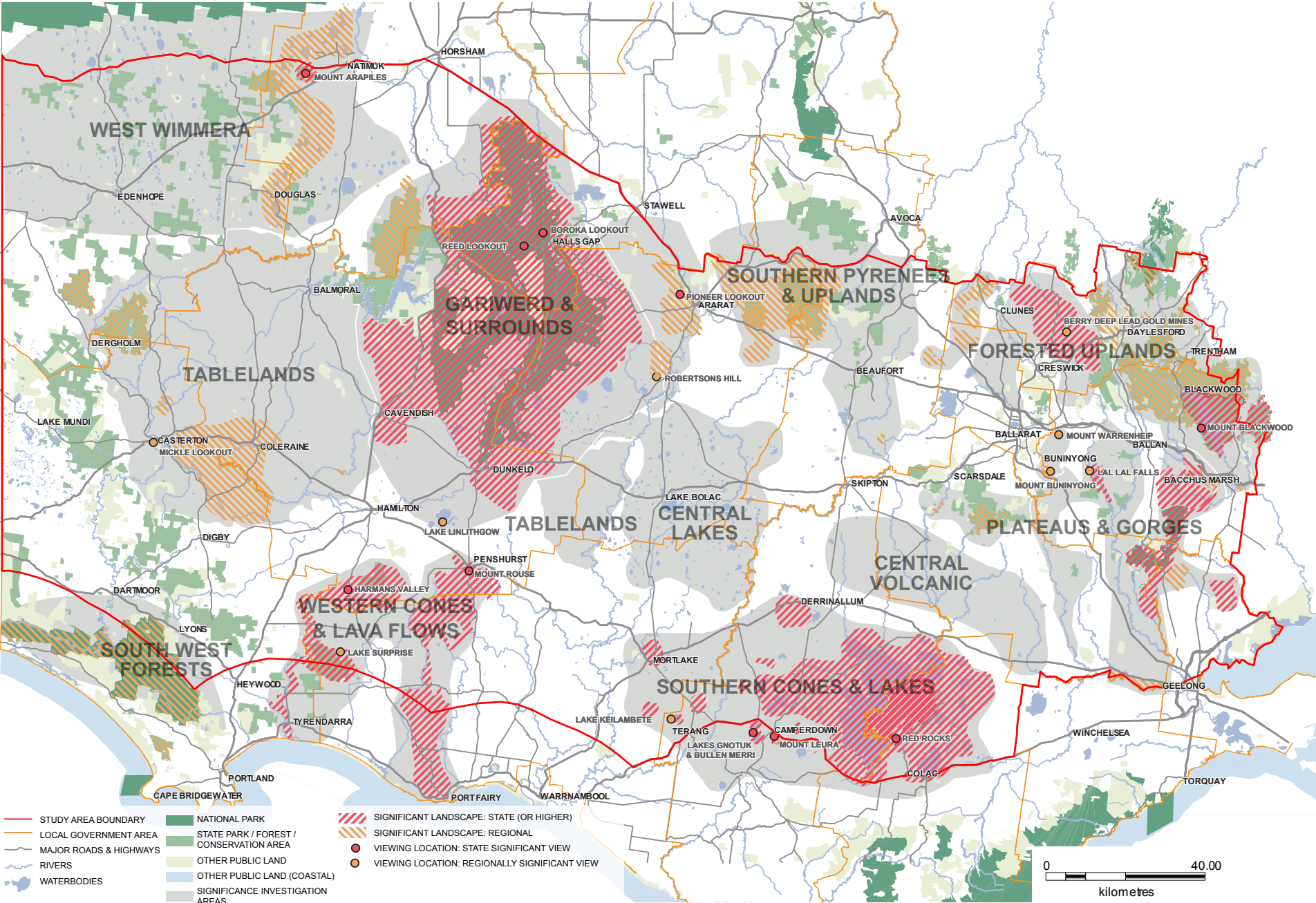
These views were then examined in detail and an assessment of their aesthetic characteristics and relevant cultural values was undertaken. As with the landscapes, this led to the designation of some views as regionally significant, and others of state significance (or higher).

The detailed assessments of the views are contained in the Significant Views of South West Victoria document.

The Significant Landscapes and Views Map overleaf shows the levels of significance attributed to the landscapes across South West Victoria, as well as the viewing locations from which regionally and state significant views are available.

The final packages of Significant Landscapes and Significant Views documents have been arranged into Landscape Character Types rather than 'significance investigation areas' to retain consistency and ease of navigation across the suite of documents.

Significance Investigation Areas + Significant Landscapes & Views of South West Victoria Map



# Significant Landscapes of South West Victoria

<b>1. Western Volcanic Plain</b>			<b>2. The Uplands</b>			<b>3. Goldfields</b>		
1.1	Southern Cones	State	2.1	Lerderderg Gorge & State Park	State	3.1	Castlemaine Diggings National Heritage Park	Regional
1.2	Lakeside Stony Rises	State	2.2	Wombat State Forest & Hepburn Regional Park	Regional	3.2	Ararat Hills & Ridges	Regional
1.3	Volcanic Lakes	State	2.3	Werribee Gorge	State	<b>4. The Rolling Tablelands</b>		
1.4	Inland Lakes	State	2.4	Bacchus Marsh Agricultural Valley	Regional	4.1	Wannon & Nigretta Falls	State
1.5	Mount Leura Complex	State	2.5	Parwan Valley	State	4.2	The Hummocks, Wando Vale	Regional
1.6	Red Rock Volcanic Complex	State	2.6	Brisbane Ranges & Rowsley Scarp	State	4.3	Dergholm State Park	Regional
1.7	Mount Rouse	State	2.7	Anakie Hills	Regional	4.4	Merino Tablelands	Regional
1.8	Mount Eccles (Budj Bim) & Tyrendarra Lava Flow	State	2.8	You Yangs	State	<b>5. The Wimmera Plains</b>		
1.9	Mount Napier & Harmans Valley Lava Flow	State	2.9	Lal Lal Gorge	State	5.1	Mount Arapiles	State
1.10	Hepburn Gold Mines & Volcanic District	State	2.10	Enfield State Park	Regional	5.2	Natimuk - Douglas Wetland System	Regional
1.11	Mount Buninyong & Mount Warrenheip	Regional	2.11	Devils Kitchen	Regional	<b>6. The Grampians (Gariwerd) &amp; Surrounds</b>		
1.12	Mount Emu	Regional	2.12	Island Uplands	Regional	6.1	The Grampians (Gariwerd)	State (or higher)
1.13	Barrabool Hills	Regional	2.13	Lower Pyrenees	Regional	6.2	Black Range (Burrunj) State Park	Regional
						<b>7. Vegetated Rises</b>		
						7.1	Cobboboonee & Lower Glenelg National Parks	Regional