

## 2.6 BRISBANE RANGES & ROWSLEY SCARP

### Significant Landscape

Character Type	1	Uplands
Character Area	2.5	Plateaus & Gorges
	2.6	Brisbane Ranges
	2.7	You Yangs

The Brisbane Ranges National Park lies to the south of Bacchus Marsh. The Rowsley Scarp is a long tectonic fault line that sweeps from Bacchus Marsh in the north to near Anakie in the south, where it peters out to join the valleys of the Moorabool River and Sutherland Creek. The Scarp forms the eastern edge of the Brisbane Ranges.

#### Major viewing corridors:

- Ballan - Geelong Road
- De Motts Road
- Staughton Vale Road
- Bacchus Marsh - Balliang Road
- Brisbane Road
- Steiglitz - Durdidwarrah Road
- McCormacks Road
- Briabane Ranges / Reids Road

#### Overall Significance Rating: State

A detailed significance assessment is provided over the following pages.



*Rowlsey Scarp*



*View from the edge of Rowsley Scarp where it joins the Weribee Gorge near Bacchus Marsh, on McCormacks Road*

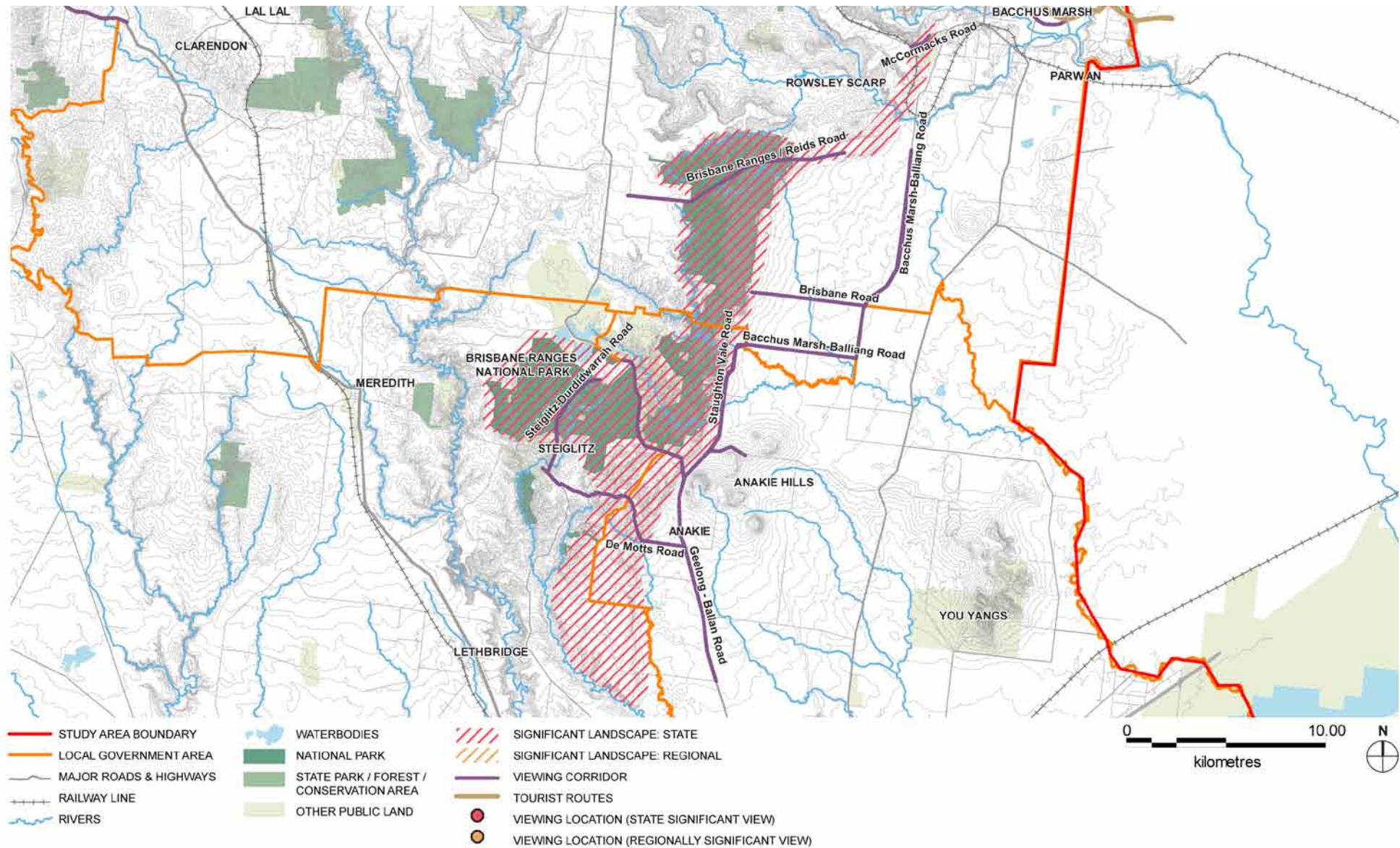


*Brisbane Ranges*



*Within the Brisbane Ranges*

## Landscape Significance Map





## Aesthetic Values

AESTHETIC VALUES				
	Source	Description	Aesthetic Values Rating Considerations (i.e. exemplary, iconic, scarce)	Level of Significance
LANDSCAPE FEATURES	Survey	<p>The Brisbane Ranges are a low range of mountains dissected by rugged rocky gullies and gorges, and blanketed in thick tree cover.</p> <p>The Rowsley Scarp is a long ridgeline that rises to 230 metres above the sunken flat lands that border Port Phillip Bay. It sharply defines edge of the Victorian Uplands region that features flat plateaus and deeply incised gorges, and marks the eastern edge of the Brisbane Ranges.</p>	<p>The eastern edges of the Brisbane ranges which include Rowsley Scarp form an iconic and scarce landscape feature within the broader context.</p> <p>The breadth of the Scarp and the impact that is has on the Western Plains of Victoria between Melbourne and Geelong make it an exemplary landscape feature in Victoria.</p>	Exceptional (State)
EDGES OR CONTRASTS	Survey	<p>The Scarp is a high protrusion that rises from the flat to undulating landscape. The eastern edge of the Brisbane Ranges National Park is heavily vegetated and this provides a contrast with the cleared land on the Volcanic Plain. Further north near Bacchus Marsh the slopes of the Brisbane Ranges are predominantly cleared, and the underlying structure of the landform (such as variations between sheer faces and more gentle rises) is more apparent.</p> <p>In contrast to the eastern edge, the western edge of the Brisbane Ranges does not display visually strong edges, with low hills and vegetation cover which 'bleeds' into the surrounding landscape.</p>	<p>The edges of the landscape regions within Victoria are often blurred, however, the Rowsley Scarp is a sharp and distinctive feature that clearly defines the edge between the Volcanic Plain and Victorian Uplands region. This is a scarce landscape within the broader context.</p>	High (Regional)
COMPOSITION	Survey	<p>The vegetated edge of the Rowsley Scarp provides a stunning backdrop to open, undulating landscapes in the middle and foreground of views.</p> <p>At higher elevations on the Scarp there are numerous scenic viewing opportunities, providing views filtered through roadside vegetation across the open plains to the east. Where the landscape is open, these are broad and sweeping, or glimpses are available through breaks in vegetation in forested areas.</p>	<p>The Rowsley Scarp provides an excellent range of opportunities from which the landscape may be appreciated, it takes the form of a scenic backdrop as well as providing a number of outlooks from road corridors.</p>	High (Regional)
OVERALL AESTHETIC SIGNIFICANCE RATING				State

## Other Cultural Landscape Values

HISTORIC	
Source	Description
Desktop Research	Aboriginal artefact scatters, earth mounds and scarred trees occur throughout the area.
Parks Victoria	Gold was discovered in the Anakie Hills in 1851 and the town of Steiglitz was established to accommodate the influx of miners. The Lower Stony Creek Reservoir was built in the 1870s and the reservoir wall is significant as the first concrete dam wall in the southern hemisphere.
Golden Plains Planning Scheme	The Brisbane Ranges are included in the Heritage Overlay (HO16) as a place of natural and cultural heritage significance.
SIGNIFICANCE RATING	Regional

ENVIRONMENTAL / SCIENTIFIC	
Source	Description
National Trust	The Brisbane Ranges are listed by the National Trust as of State significance for its unique geological features such as the Rowsley fault's distinguishable escarpment, and the area's significant vegetation and the presence of rare species.
IUCN Parks Victoria	Brisbane Ranges National Park is a protected area Category II (National Park) on the IUCN list and protected by National Parks Act 1975, Schedule 2. Mount Anakie Scenic Reserve is a protected area, Category III (Natural Monument or Feature) on the IUCN list.  The Stony Creek (Durdiwarrah) Reference Area is protected by the Reference Areas Act 1978 and listed in IUCN's List of Protected Areas, Category IA (Strict Nature Reserve). The Durdidwarrah Bushland Reserve is listed as Category IV (Habitat/Species Management Area) by the IUCN.
Department of Primary Industries	The Rowsley Fault is one of the most obvious examples of a fault scarp in Victoria and provides an outstanding site for earth science teaching and research.

Golden Plains Planning Scheme	The Rural Conservation Zone is applied to the Sheoaks-Steiglitz area to protect natural heritage and biodiversity values, including remnant native vegetation on private land (RCZ3).
Greater Geelong Planning Scheme	The Brisbane Ranges are protected under the Rural Conservation Zone (RC1, 2 & 3) for their significant geology and ecology. The Significant Landscape Overlay also applies (SLO5) to protect the Anakie Hills and their high scenic quality.
Greater Geelong Planning Scheme	The Environmental Significance Overlay has been applied to the area as a part of the protected grasslands of the Werribee plains hinterland (ESO1) and for its flora and fauna habitat and geological and natural interest (ESO4). The Vegetation Protection Overlay (VPO1) applies to areas of significant roadsides vegetation.
SIGNIFICANCE RATING	State

SOCIAL	
Source	Description
Aboriginal Affairs Victoria	The Brisbane Ranges are the traditional country of the Wathaurung people to whom it holds social, cultural and spiritual significance. The waterbodies, distinctive natural features and places of ecological value within this area are likely to have high Aboriginal cultural heritage sensitivity.
Parks Victoria Tourist Information	The Brisbane Ranges National Park is popular for bushwalks, camping, picnics, scenic drives, rock climbing, wildflower and bird studies and historical discoveries.
SIGNIFICANCE RATING	State

OTHER	
Source	Description
Tourist Information	The high tourism and recreation value of the Brisbane is important to the local area and region.
SIGNIFICANCE RATING	Regional

## 2.7 ANAKIE HILLS

### Significant Landscape

Character Type	2	Uplands
Character Area	2.7	You Yangs

The Anakie Hills are a series of three volcanic hills that lie to the south of Bacchus Marsh adjacent to the Rowsley Scarp.

Notable viewing locations within this landscape include:

- Views from the granitic outcrop Elephant Rock
- The summit of Mount Anakie (located on private property)

Major viewing corridors:

- Ballan - Geelong Road
- Old Boundary Road
- Granite Road
- Staughton Vale Road
- Mount Road
- Brownes Road

### Overall Significance Rating: Regional

A detailed significance assessment is provided over the following pages.



*Exposed granite tors and slabs provide the setting for 'Fairy Park'*



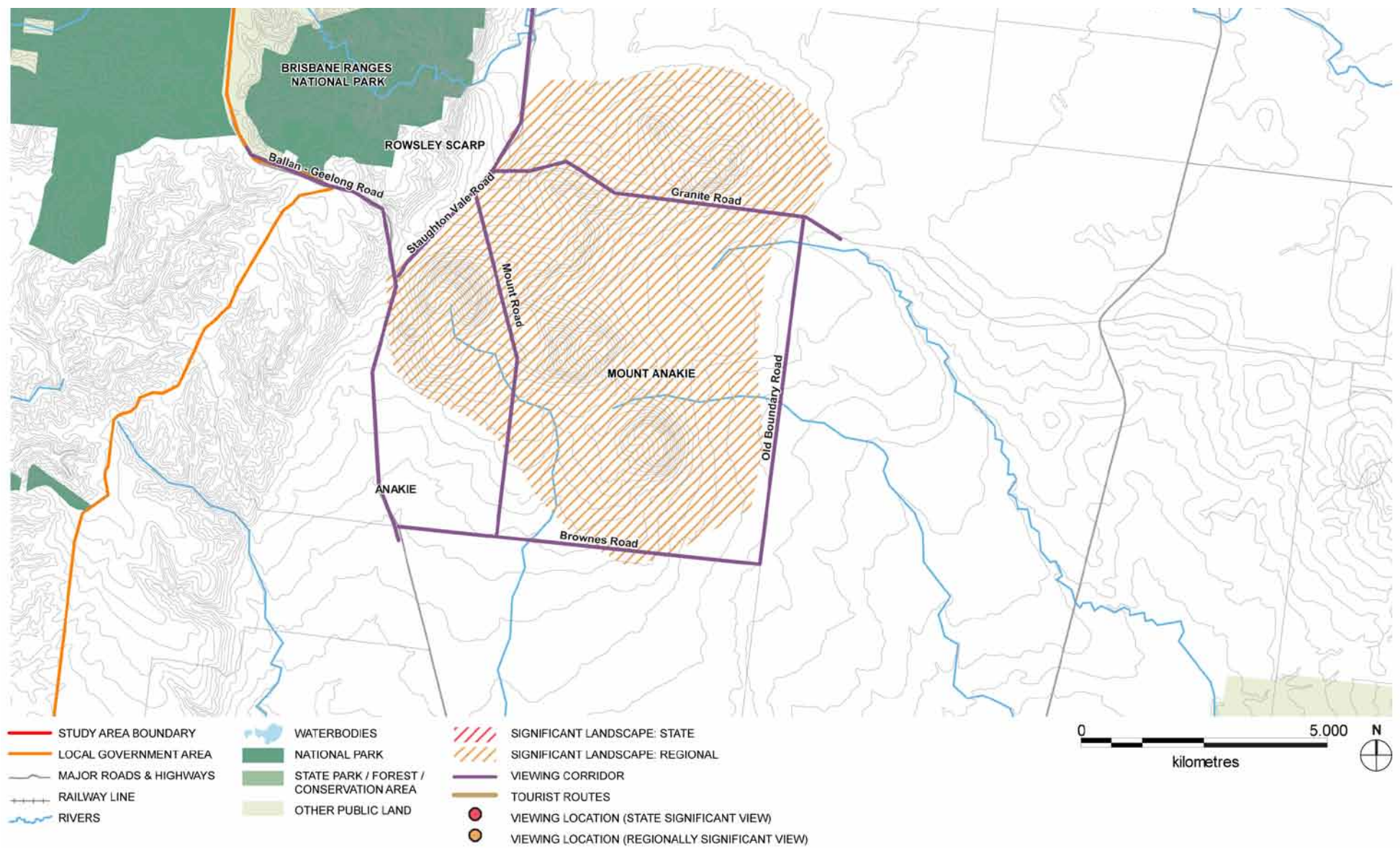
*Granite boulders form part of the landscape around Anakie*



*Anakie Hills, a series of volcanic hills that abut the Rowsley Scarp, as seen from Mount Road*



# Landscape Significance Map



## Aesthetic Values

AESTHETIC VALUES				
	Source	Description	Aesthetic Values Rating Considerations (i.e. exemplary, iconic, scarce)	Level of Significance
LANDSCAPE FEATURES	Survey	<p>Near Anakie a small collection of volcanic cones known as the Anakie Hills abuts the edge of the Rowsely Scarp.</p> <p>The Anakie Hills include Mount Anakie along with two other scoria cones and a volcanic depression which is likely to be a maar. The volcanos are adjacent to a landscape scattered with impressive granite tors and slabs, including the prominent hill that has the “Fairy Park” children’s theme park located on it.</p>	The Anakie Hills provide additional features and detail within the landscape that supports the transition between volcanic and upland regions. These features are an iconic landscape within the broader regional context.	High (Regional)
EDGES OR CONTRASTS	Survey	The Anakie Hills rise sharply from the plain, with distinct conical formations that provide highly scenic landscape variation before becoming engulfed in the vegetation of the Brisbane Ranges. In some areas sculptural granitic tors are scattered across the landscape which creates a high level of visual interest.	Clearly defined edges and distinct formations provide an exemplary viewing experience in the broader regional context.	High (Regional)
COMPOSITION	Survey	<p>The nested nature of the Anakie Hills provides a unique opportunity for the viewer to be immersed in a volcanic landscape, which is rare in the Victorian context. Scoria mining has occurred on Mount Anakie, which has caused significant scarring of the feature.</p> <p>The Fairy Park development creates further visual interruption within the landscape.</p>	The granitic features of the Anakie Hills create interest for the viewer, however, built form and mining detracts from the overall composition.	Moderate (Local)
OVERALL AESTHETIC SIGNIFICANCE RATING				Regional

## Other Cultural Landscape Values

### HISTORIC SIGNIFICANCE

Source	Description
Desktop Research	Aboriginal artefact scatters, earth mounds and scarred trees occur throughout the area.
SIGNIFICANCE RATING	Local

### ENVIRONMENTAL / SCIENTIFIC SIGNIFICANCE

Source	Description
Greater Geelong Planning Scheme	<p>The Anakie Hills are protected under the Rural Conservation Zone (RC13) for their significant geological and ecological characteristics.</p> <p>The Significant Landscape Overlay also applies to this area (SLO5) to protect the visually prominent features of the scoria Anakie Hills and their high scenic quality.</p> <p>The Environmental Significance Overlay (ESO1) has also been applied as an area of flora and fauna habitat and of geological and natural interest.</p>
Department of Primary Industries	The Rowsley Fault is one of the most obvious examples of a fault scarp in Victoria.
SIGNIFICANCE RATING	State

### SOCIAL SIGNIFICANCE

Source	Description
Aboriginal Affairs Victoria	The Anakie Hills are the traditional country of the Wathaurung people to whom it holds social, cultural and spiritual significance. The waterbodies, distinctive natural features and places of ecological value within this area are likely to have high Aboriginal cultural heritage sensitivity.
Department of Primary Industries	The Rowsley Fault provides an outstanding site for earth science teaching and research.
SIGNIFICANCE RATING	State

### OTHER SIGNIFICANCE

Source	Description
Visit Victoria	The Anakie Hills and the Fairy Park are tourist attractions within the local area.
SIGNIFICANCE RATING	Regional



## 2.8 WURDI YOUANG (YOU YANGS)

### Significant Landscape

**Character Type**      2      The Uplands

**Character Area**      2.7      You Yang

The Wathaurong Aboriginal people called the granitic rises commonly known as the You Yangs, Wurdi Youang, meaning big mountain in the middle of the plain. These hills are part of the southern reaches of the Great Dividing Range, and can be seen clearly from Geelong and sometimes as far away as the Mornington Peninsula across Port Phillip Bay.

#### Notable viewing locations within this landscape include:

- Flinders Peak Lookout
- Big Rock Lookout

#### Major viewing corridors:

- Little River - Ripley Road
- Ripley Road
- You Yangs Road
- Branch Road
- Sandy Creek Road
- Geelong - Melbourne Railway Line
- Princes Highway (Though not visible on the map opposite, the You Yangs are a clear feature along the Princes Highway between Melbourne and Geelong)

### Overall Significance Rating: State

A detailed significance assessment is provided over the following pages.



*You Yangs in Fog (elizt.atport: Flickr)*

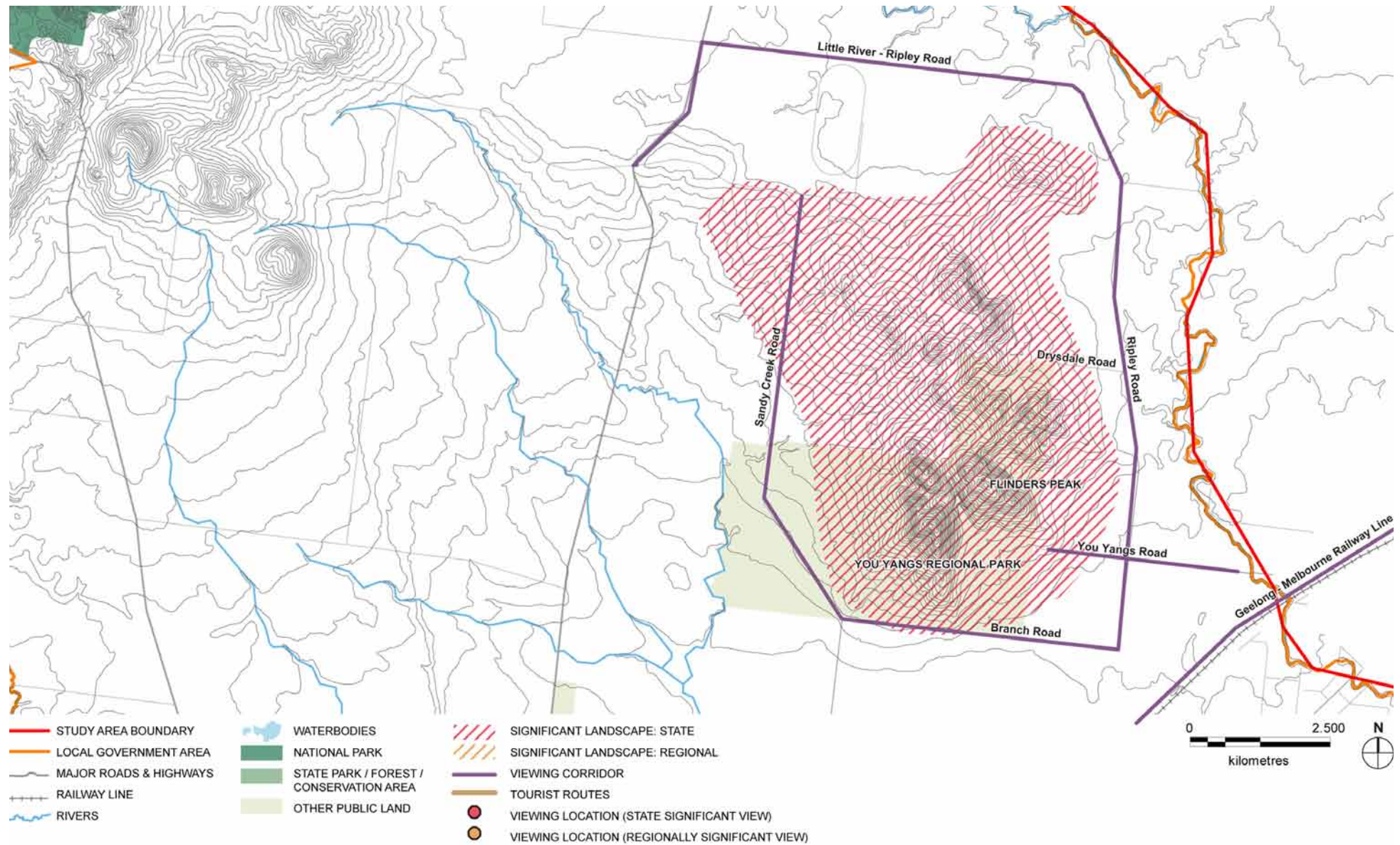


*Aboriginal water wells in the granite rocks*



*Granite rocks*

## Landscape Significance Map



## Aesthetic Values

AESTHETIC VALUES				
	Source	Description	Aesthetic Values Rating Considerations (i.e. exemplary, iconic, scarce)	Level of Significance
LANDSCAPE FEATURES	Survey	The Wurdi Youang are a series of granite ranges that rise from the Werribee Plain between Melbourne and Geelong. Most of the rises are included in the You Yangs Regional Park. Flinders Peak is the highest point in the park, with an elevation of around 350 metres. From here views are available across the Brisbane Ranges, Geelong and Corio Bay, to Melbourne and as far away as Mount Macedon.	The rise and formation of the You Yangs are a distinctive and memorable feature of the journey between Melbourne and Geelong.	High (Regional)
EDGES OR CONTRASTS	Survey	There is a sharp contrast between the uplift of the hills and the surrounding, flat landscape. The vegetated setting of these contrasts with the cleared, agricultural land of the surrounding plain, making it a bold focal point.	The steep slopes and bloated, granitic outcrops are an exemplary example of the uplands that protrude on the northern and eastern edges of the Volcanic Plains.	High (Regional)
COMPOSITION	Survey	<p>The sharp, triangular peaks of the You Yangs are a distinctive landscape feature that dominates the horizon from a number of viewing angles. Up close, weathered granite outcrops and tors on the faces of the hill slopes create intricate detail, and impressive sculptural forms. These often feature in the foreground and middle ground of views, with the dramatic backdrop of the ranges in the distance. The landscape surrounding the You Yangs often contains rough, textured surfaces of stony rises and lava flows that originated from volcanic activity at the nearby Anakie Hills.</p> <p>Australian landscape artist Fred Williams drew inspiration from the landscape surrounding the You Yangs, and the distinctive shape on the horizon and sculptural granitic tors are popular settings and subjects for landscape photographers.</p>	The You Yangs are an iconic landscape feature that is recognisable not just to residents of Geelong and the surrounding region, but to those who can see the hills on the distant horizon from the eastern edge of Port Phillip Bay.	Exceptional (State)
OVERALL AESTHETIC SIGNIFICANCE RATING				State



## Other Cultural Landscape Values

HISTORIC SIGNIFICANCE	
Source	Description
Desktop Research	Aboriginal artefact scatters, earth mounds, scarred trees and granitic rock wells occur throughout the area.
Museum Victoria	The Wurdi Youang were used as a navigation beacon by Matthew Flinders, the first European explorer in the area.
Parks Victoria	The park includes remains of gravel pits and plantations which reflect how European settlers used the area as a source of gravel and timber.
National Gallery of Australia	Australian landscape painter Fred Williams drew inspiration from this landscape in his <i>You Yangs</i> series of 1962-64.
SIGNIFICANCE RATING	State

ENVIRONMENTAL / SCIENTIFIC SIGNIFICANCE	
Source	Description
Desktop Research	Mt. Rothwell Biodiversity Interpretation Centre on the northern edges of the You Yangs Regional Park has been established for the protection of flora and fauna species with high conservation value.
Park Victoria	<p>The park has high conservation values as an island of habitat for flora and fauna species that are otherwise surrounded by exotic pastures and grazing land.</p> <p>The Brittle Greenhood and Growling Grass Frogs which are both listed as threatened under the Flora and Fauna Guarantee Act 1988 are found in the park.</p>
SIGNIFICANCE RATING	Regional

SOCIAL SIGNIFICANCE	
Source	Description
Aboriginal Affairs Victoria	Wurdi Youang is the traditional country of the Wathaurung people to whom it holds social, cultural and spiritual significance. The waterbodies, distinctive natural features and places of ecological value within this area are likely to have high Aboriginal cultural heritage sensitivity.
Parks Victoria	The You Yangs Regional Park has high recreational values and offers a range of outdoor activities such as mountain bike riding, bird watching, rock climbing and bushwalking, all with magnificent views of the surrounding plains.
Survey	The Wurdi Youang are a well known landmark within the region, and at the gateway to Geelong.
Parks Victoria	<i>Bunjil</i> (2006) is a large stone geoglyph created by Andrew Rogers to commemorate the Melbourne 2006 Commonwealth Games. The geoglyph depicts Bunjil, a wedged-tailed eagle who was the Creator Spirit of the Wathaurong Aboriginal people.
SIGNIFICANCE RATING	Regional

OTHER SIGNIFICANCE	
Source	Description
Desktop Research	The scenic and recreational attributes of the Wurdi Youang are important visitor attractions for the area which contributes to the local economy.
SIGNIFICANCE RATING	Regional

## 2.10 LAL LAL GORGE

### Significant Landscape

Character Type	2	The Uplands
Character Areas	2.5	Plateaus and Gorges

Lal Lal Gorge is a steep sided basalt gorge and waterfall to the south east of Ballarat.

The main viewing corridor from which to experience this landscape is the Elaine - Edgerton Road which cuts across the Gorge to the south.

### Overall Significance Rating: State

A detailed significance assessment is provided over the following pages.



*Lal Lal Gorge by Andrew Thomas*



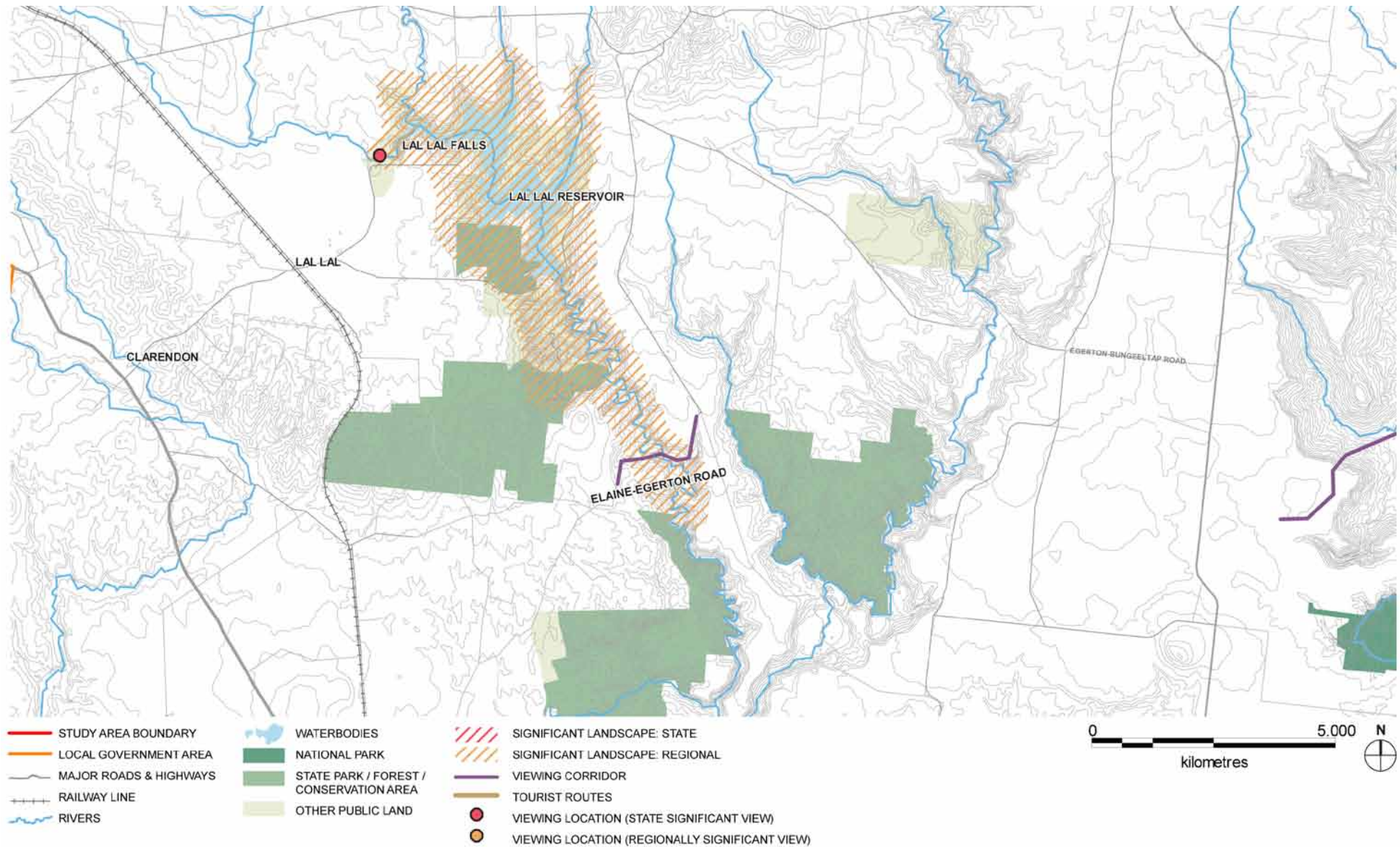
*Lal Lal Falls by Andrew Thomas*



*The gorge cuts deeply into the surrounding plain*



## Landscape Significance Map





## Aesthetic Values

AESTHETIC VALUES				
	Source	Description	Aesthetic Values Rating Considerations (ie. exemplary, iconic, scarce)	Level of Significance
LANDSCAPE FEATURES	Survey	The Lal Lal gorge is a steep sided basalt gorge carved out of a volcanic lava flow by the waters of Lal Lal Creek. The gorge is surrounded by gently undulating pastoral land and forested areas. It carves a deeply incised cleft that twists through this landscape before joining the broader waters of the Lal Lal Reservoir in the east.	The Lal Lal Gorge is an exemplary landscape of rushing waterfalls, scenic views and exposed lava rocks that proved a strong contrast with the surrounding pastoral land.	Exceptional (State)
EDGES OR CONTRASTS	Survey	Distinctive edges and contrasts are created as the grassland gives way to the textured, deep red and grey rock columns that line the walls of the gorge. The exposed rocks with undercut sides cast deep shadows on the rocky cliff faces which descend to a valley floor of crumbling basalt rocks, pools of water and tufts of vegetation.	Distinctive edges are present between the gorge feature and the surrounding landscape. This landscape is unique and scarce in the regional context.	High (Regional)
COMPOSITION	Survey	<p>Picture postcard views are available over this spectacular landscape. The basaltic gorge plummets dramatically into a deep, cavernous floor of textured rock and flowing water. The falls at one end create a scenic point of focus from the viewing platform. Surrounding the gorge, the gently undulating pastoral landscape is peppered with gum trees and in the distance the volcanic rises of Mounts Buninyong and Warrenheip are visible.</p> <p>Artists and photographers have been drawn to the falls to capture the landscape in their work. The landscape was painted by Eugene von Guerard in the 19th century and more recently by Fred Williams in 1976, and continues to provide inspiration to numerous modern day artists.</p>	This is an iconic composition within the region and can be viewed from a number of designated viewing points.	Exceptional (State)
OVERALL AESTHETIC SIGNIFICANCE RATING				State

## Other Cultural Landscape Values

### HISTORIC SIGNIFICANCE

Source	Description
Desktop Research	Aboriginal artefact scatters, earth mounds and scarred trees occur throughout the area. The name 'Lal Lal' is derived from the Wathaurong language meaning 'dashing of water'. The creeks and rivers of this region were part of a network of 'highways' used by Aboriginal people as a means of reaching the sea.
SIGNIFICANCE RATING	Regional

### ENVIRONMENTAL / SCIENTIFIC SIGNIFICANCE

Source	Description
IUCN	The Lal Lal Falls Scenic Reserve is included as a protected area, Category III (Natural Monument or Feature).
SIGNIFICANCE RATING	Regional

### SOCIAL SIGNIFICANCE

Source	Description
Aboriginal Affairs Victoria	<p>The Lal Lal Gorge and Falls are the traditional country of the Wathaurong people to whom it holds social, cultural and spiritual significance. The waterbodies, distinctive natural features and places of ecological value within this area are likely to have high Aboriginal cultural heritage sensitivity.</p> <p>Lal Lal Falls are a place of the Dreaming, of high significance. It is believed that they were made by Bunjil the Creator to relieve a monotonous landscape. He was so pleased with his work he chose to live here.</p>
Tourist Information	The Lal Lal Falls are a popular tourist destination within the region and for day trippers from Melbourne. There are many walking trails around the falls and the gorge.
Desktop Research	The gorge is a popular rock climbing location.
SIGNIFICANCE RATING	Regional