



**Legend**

- S2M Interconnector - Shared alignment
- S2M Interconnector Indicative Assessment Area (Option A)
- S2M Interconnector Indicative Assessment Area (Option B)
- RAP boundary
- Areas of Cultural Heritage Sensitivity
- Western Water Recycled Water Plants

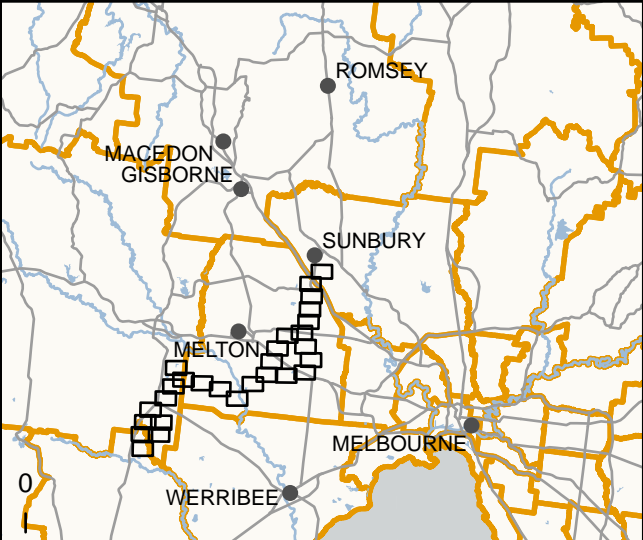
**Scale**

0 250 500 Metres

**DATA SOURCES**

© Commonwealth of Australia (Geoscience Australia) 2006 Geodata Topo 250k Series 3; Vicmap Data © State of Victoria 2021; CH2M Beca 2021. Aerometrex Metromap 2021; ESRI Basemap 2021

**COPYRIGHT:** The concepts and information contained in this document are the copyright of Jacobs. Use or copying of the document in whole or in part without the written permission of Jacobs constitutes an infringement of copyright. Jacobs does not warrant that this document is definitive nor free of error and does not accept liability for any loss caused or arising from reliance upon information provided herein.







Legend

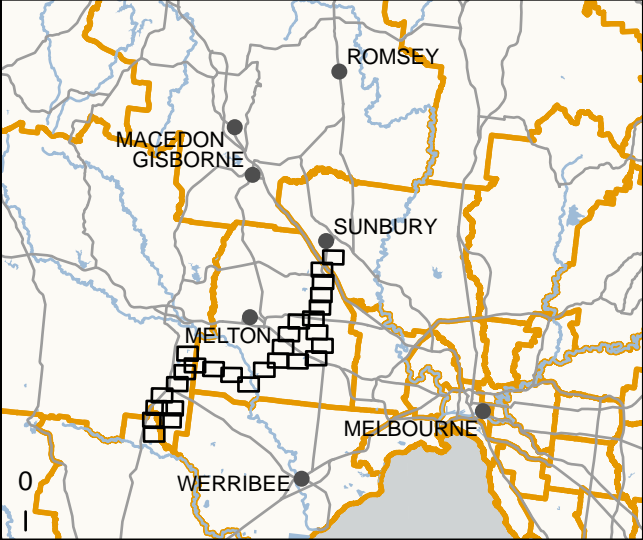
- S2M Interconnector - Shared alignment
- S2M Interconnector Indicative Assessment Area (Option A)
- S2M Interconnector Indicative Assessment Area (Option B)
- RAP boundary
- Areas of Cultural Heritage Sensitivity

Scale bar: 0 250 500 Metres

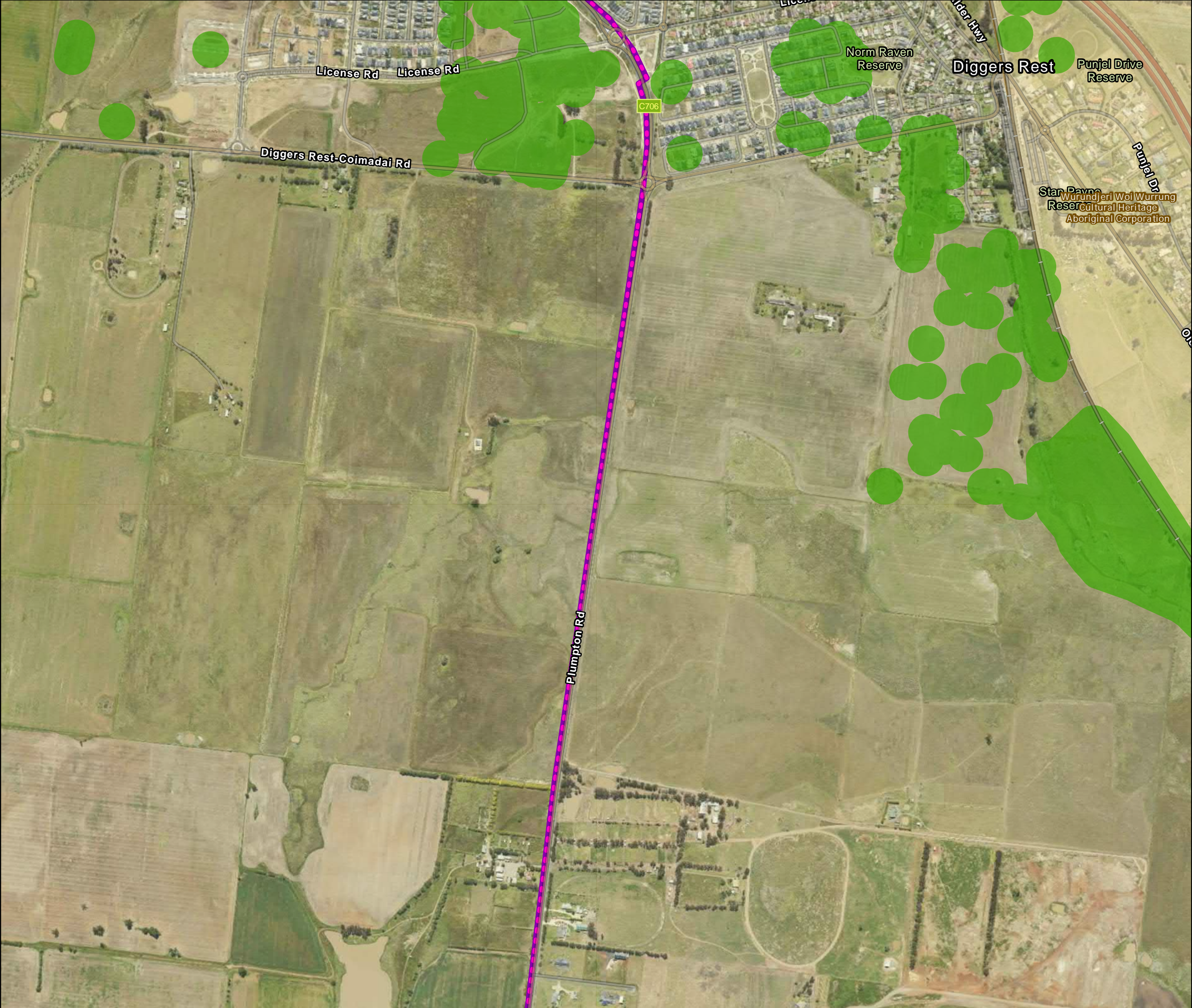
IS305300

DATA SOURCES  
© Commonwealth of Australia (Geoscience Australia) 2006 Geodata Topo 250k Series 3; Vicmap Data © State of Victoria 2021; CH2M Beca 2021. Aerometrex Metromap 2021; ESRI Basemap 2021

COPYRIGHT: The concepts and information contained in this document are the copyright of Jacobs. Use or copying of the document in whole or in part without the written permission of Jacobs constitutes an infringement of copyright. Jacobs does not warrant that this document is definitive nor free of error and does not accept liability for any loss caused or arising from reliance upon information provided herein.







Legend

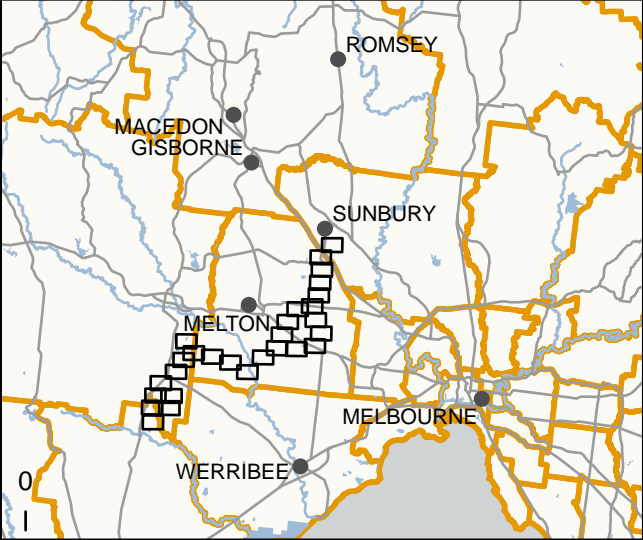
- S2M Interconnector - Shared alignment
- S2M Interconnector Indicative Assessment Area (Option A)
- S2M Interconnector Indicative Assessment Area (Option B)
- RAP boundary
- Areas of Cultural Heritage Sensitivity

Scale bar: 0, 250, 500 Metres

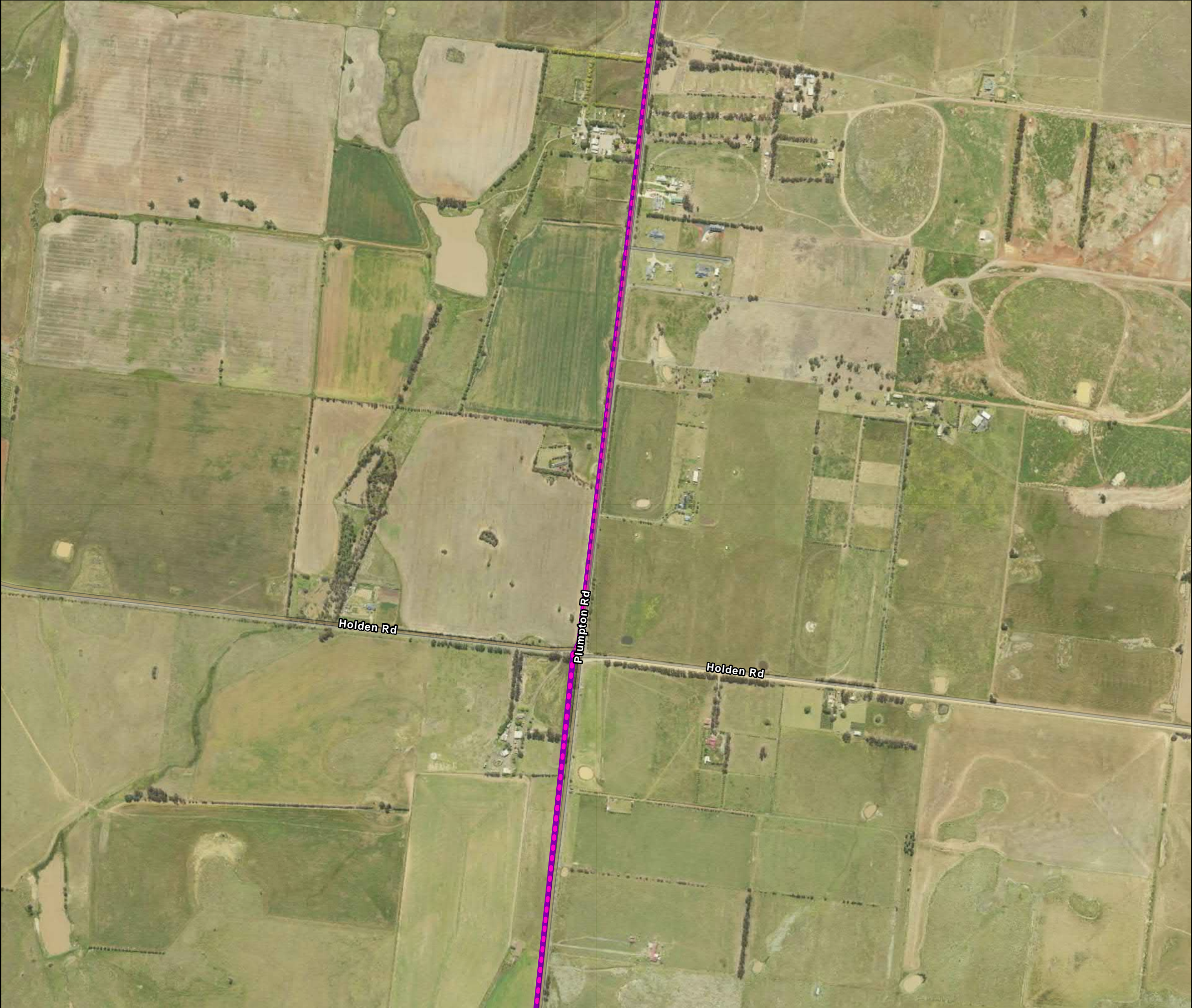
IS305300

DATA SOURCES  
© Commonwealth of Australia (Geoscience Australia) 2006 Geodata Topo 250k Series 3; Vicmap Data © State of Victoria 2021; CH2M Beca 2021. Aerometrex Metromap 2021; ESRI Basemap 2021

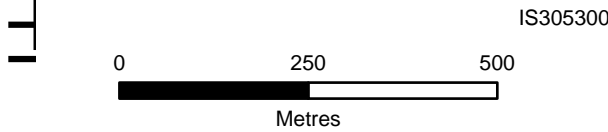
COPYRIGHT: The concepts and information contained in this document are the copyright of Jacobs. Use or copying of the document in whole or in part without the written permission of Jacobs constitutes an infringement of copyright. Jacobs does not warrant that this document is definitive nor free of error and does not accept liability for any loss caused or arising from reliance upon information provided herein.





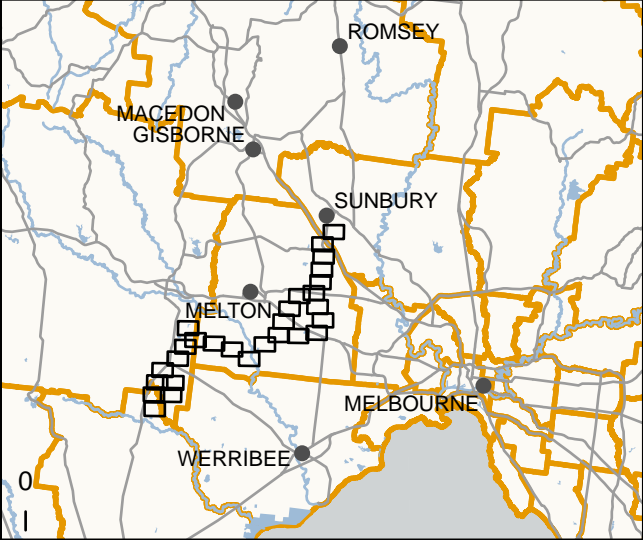


- Legend
- S2M Interconnector - Shared alignment
  - S2M Interconnector Indicative Assessment Area (Option A)
  - S2M Interconnector Indicative Assessment Area (Option B)



DATA SOURCES  
© Commonwealth of Australia (Geoscience Australia) 2006 Geodata Topo 250k Series 3; Vicmap Data © State of Victoria 2021; CH2M Beca 2021. Aerometrex Metromap 2021; ESRI Basemap 2021

COPYRIGHT: The concepts and information contained in this document are the copyright of Jacobs. Use or copying of the document in whole or in part without the written permission of Jacobs constitutes an infringement of copyright. Jacobs does not warrant that this document is definitive nor free of error and does not accept liability for any loss caused or arising from reliance upon information provided herein.





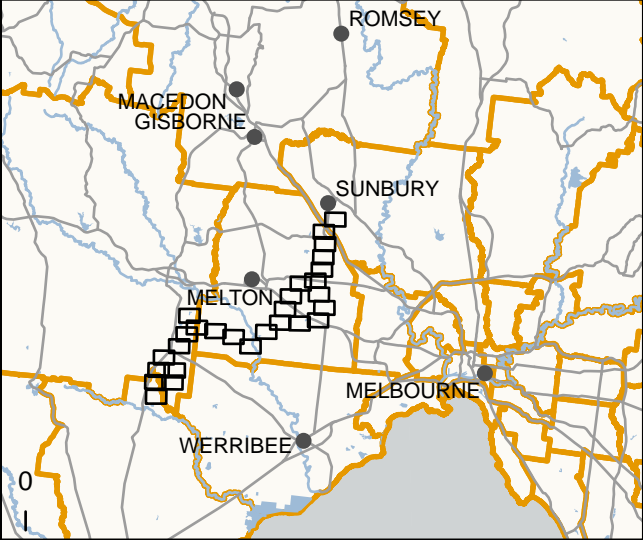


- Legend
- S2M Interconnector - Shared alignment
  - S2M Interconnector Indicative Assessment Area (Option A)
  - S2M Interconnector Indicative Assessment Area (Option B)

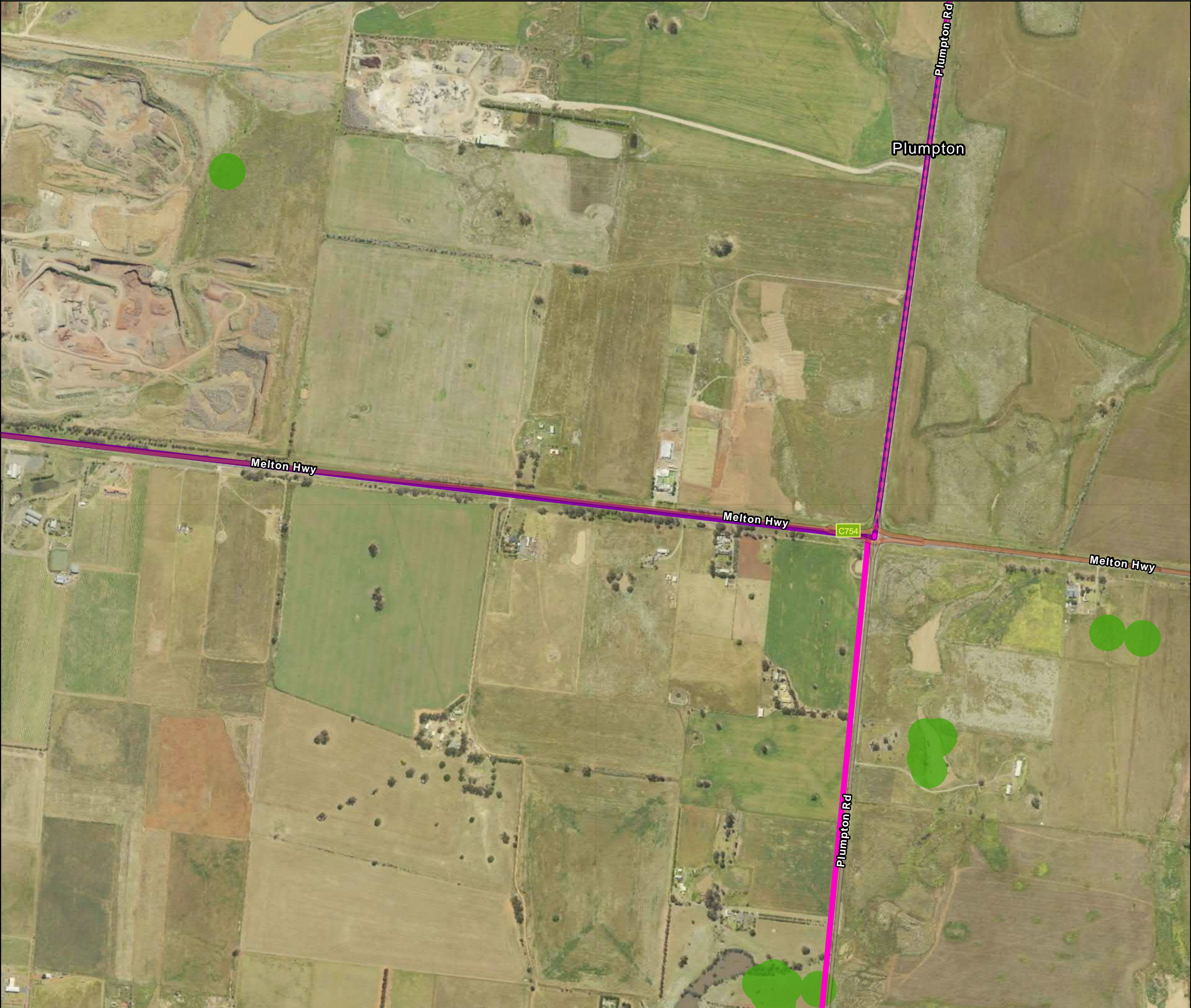


DATA SOURCES  
© Commonwealth of Australia (Geoscience Australia) 2006 Geodata Topo 250k Series 3; Vicmap Data © State of Victoria 2021; CH2M Beca 2021. Aerometrex Metromap 2021; ESRI Basemap 2021

COPYRIGHT: The concepts and information contained in this document are the copyright of Jacobs. Use or copying of the document in whole or in part without the written permission of Jacobs constitutes an infringement of copyright. Jacobs does not warrant that this document is definitive nor free of error and does not accept liability for any loss caused or arising from reliance upon information provided herein.





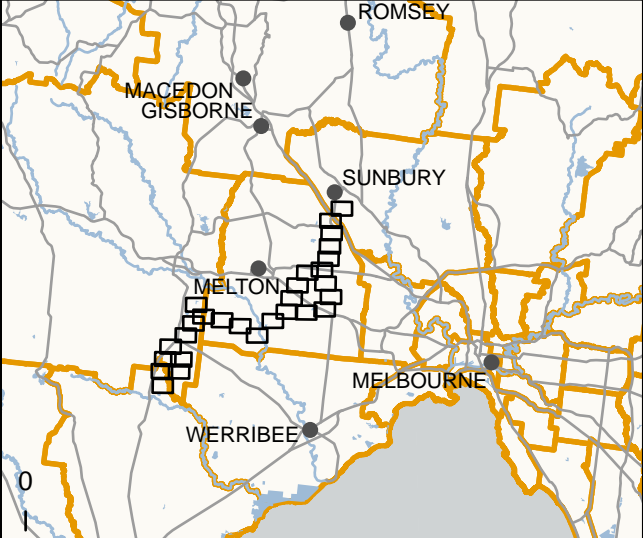


- Legend
- S2M Interconnector - Shared alignment
  - S2M Interconnector Indicative Assessment Area (Option A)
  - S2M Interconnector Indicative Assessment Area (Option B)
  - Areas of Cultural Heritage Sensitivity

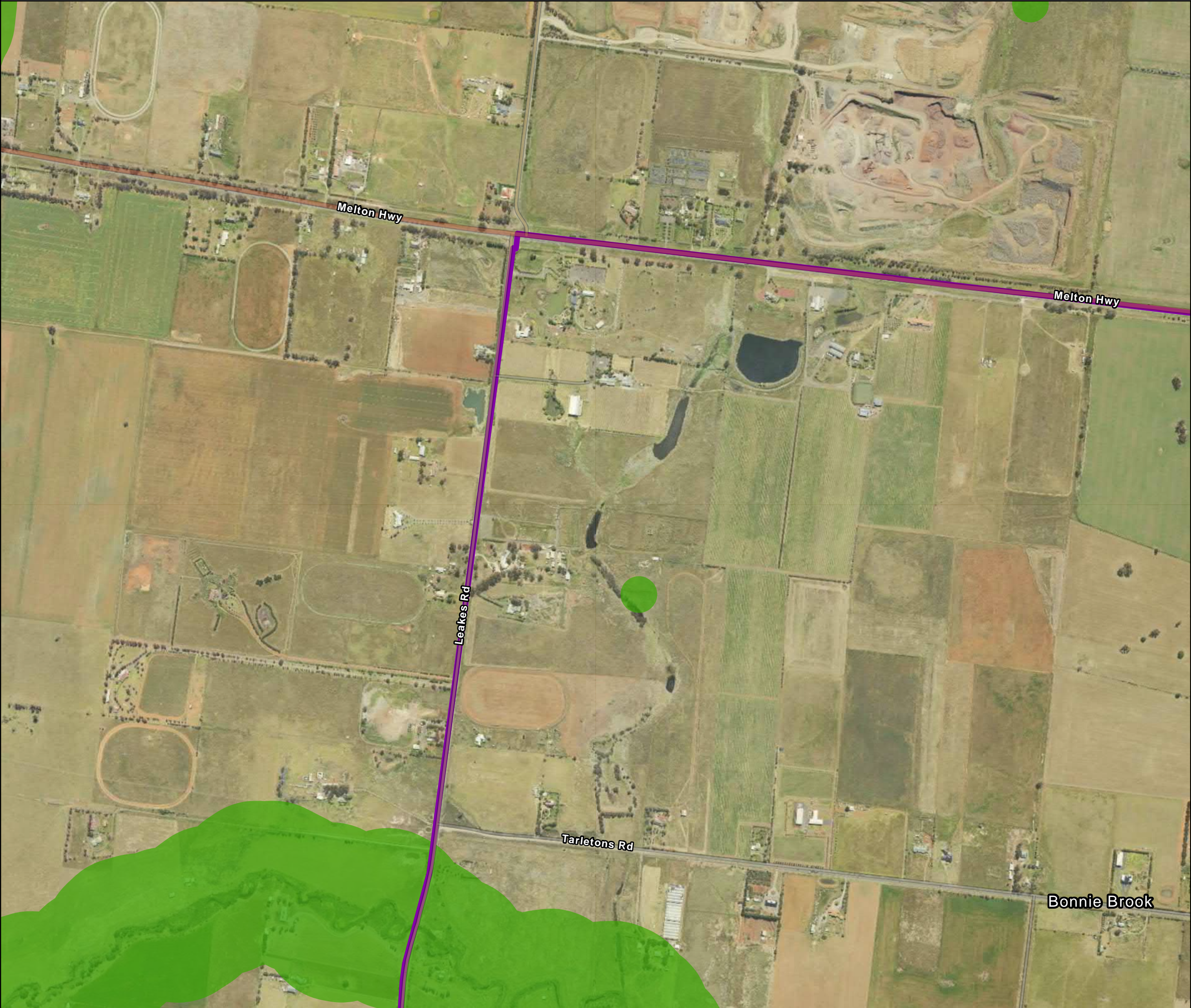


DATA SOURCES  
© Commonwealth of Australia (Geoscience Australia) 2006 Geodata Topo 250k Series 3; Vicmap Data © State of Victoria 2021; CH2M Beca 2021. Aerometrex Metromap 2021; ESRI Basemap 2021

COPYRIGHT: The concepts and information contained in this document are the copyright of Jacobs. Use or copying of the document in whole or in part without the written permission of Jacobs constitutes an infringement of copyright. Jacobs does not warrant that this document is definitive nor free of error and does not accept liability for any loss caused or arising from reliance upon information provided herein.







Legend

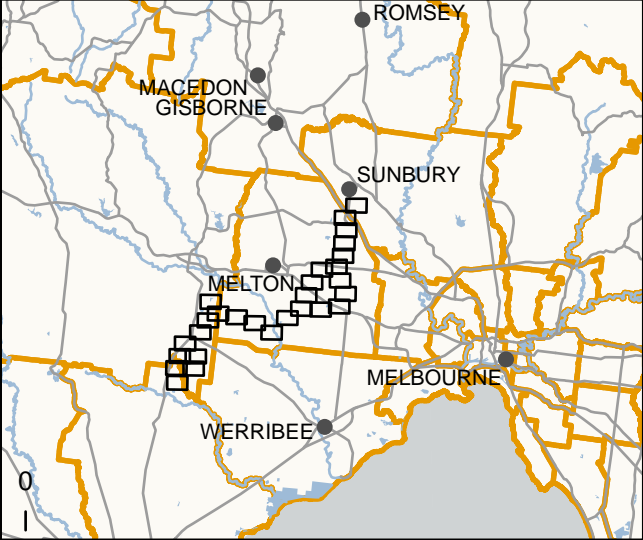
- S2M Interconnector Indicative Assessment Area (Option A)
- Areas of Cultural Heritage Sensitivity

Scale bar: 0, 250, 500 Metres

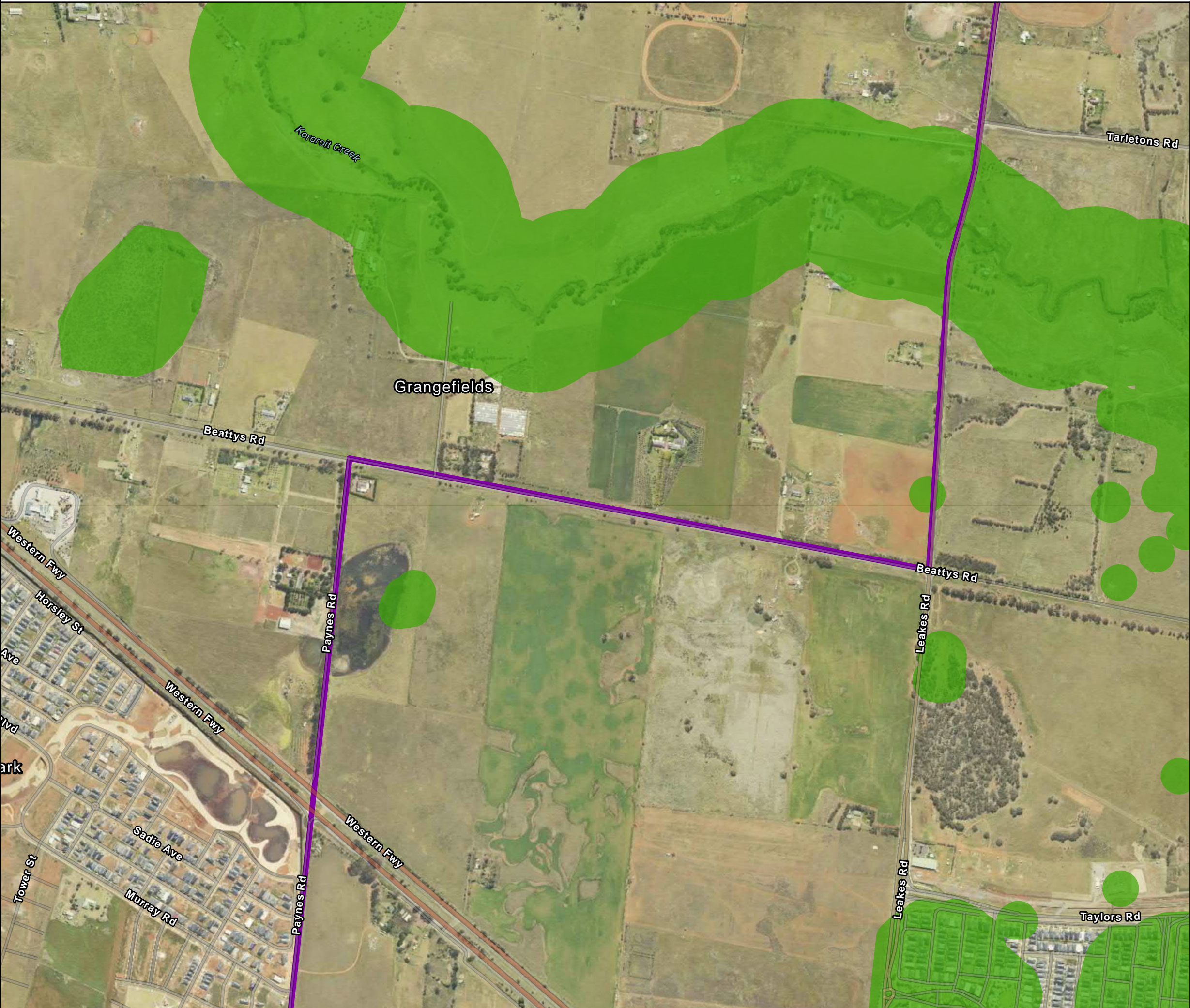
IS305300

DATA SOURCES  
© Commonwealth of Australia (Geoscience Australia) 2006 Geodata Topo 250k Series 3; Vicmap Data © State of Victoria 2021; CH2M Beca 2021. Aerometrex Metromap 2021; ESRI Basemap 2021

COPYRIGHT: The concepts and information contained in this document are the copyright of Jacobs. Use or copying of the document in whole or in part without the written permission of Jacobs constitutes an infringement of copyright. Jacobs does not warrant that this document is definitive nor free of error and does not accept liability for any loss caused or arising from reliance upon information provided herein.







Legend

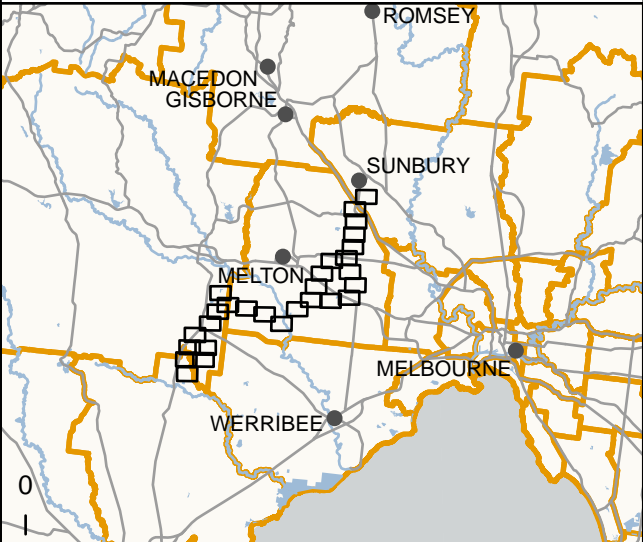
- S2M Interconnector Indicative Assessment Area (Option A)
- Areas of Cultural Heritage Sensitivity

Scale: 0 250 500 Metres

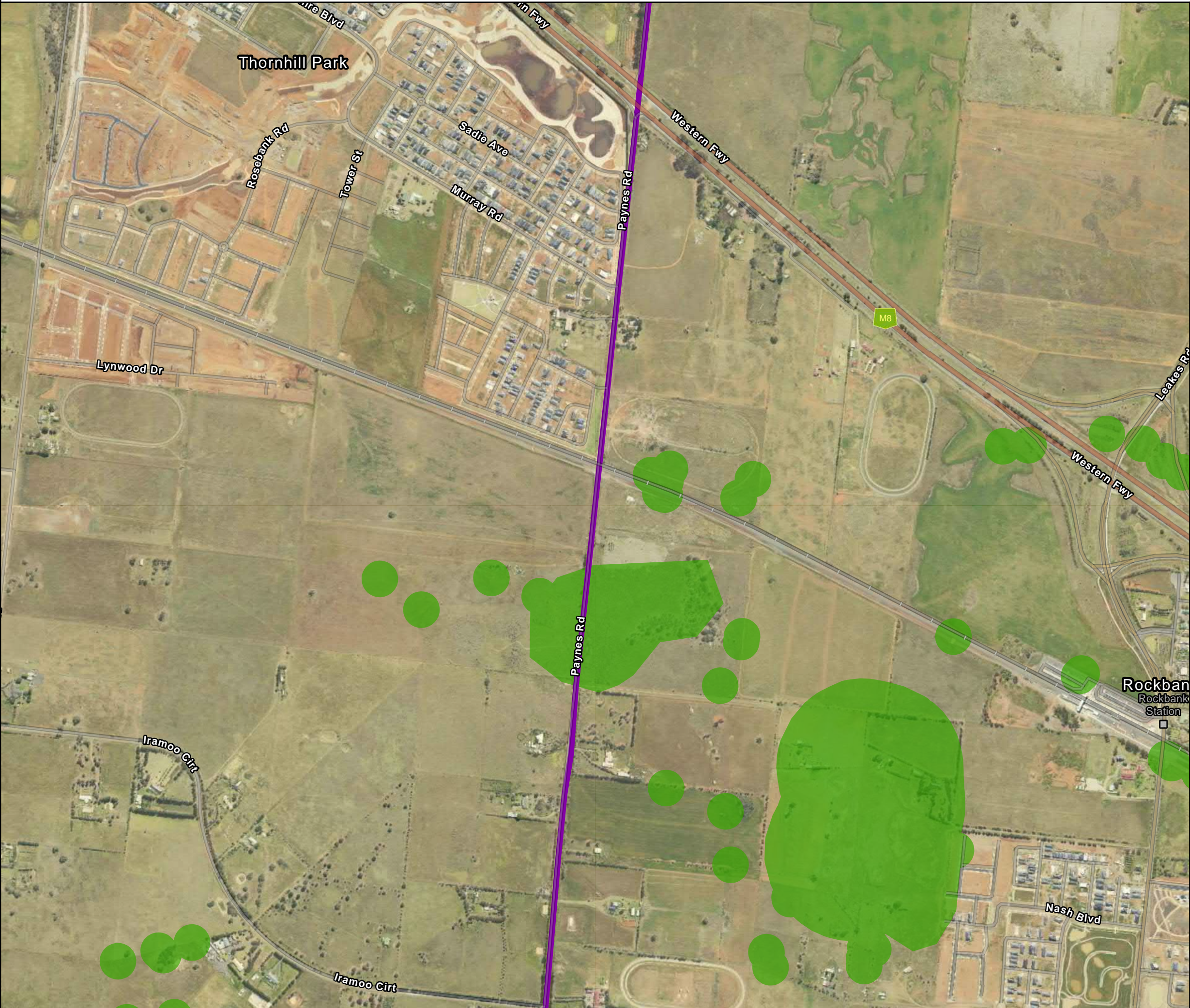
IS305300

DATA SOURCES  
© Commonwealth of Australia (Geoscience Australia) 2006 Geodata Topo 250k Series 3; Vicmap Data © State of Victoria 2021; CH2M Beca 2021. Aerometrex Metromap 2021; ESRI Basemap 2021

COPYRIGHT: The concepts and information contained in this document are the copyright of Jacobs. Use or copying of the document in whole or in part without the written permission of Jacobs constitutes an infringement of copyright. Jacobs does not warrant that this document is definitive nor free of error and does not accept liability for any loss caused or arising from reliance upon information provided herein.







Legend

- S2M Interconnector Indicative Assessment Area (Option A)
- Areas of Cultural Heritage Sensitivity

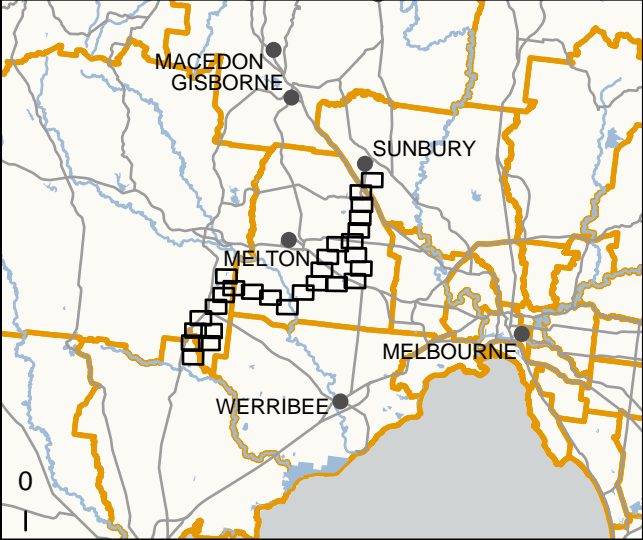
IS305300

0 250 500

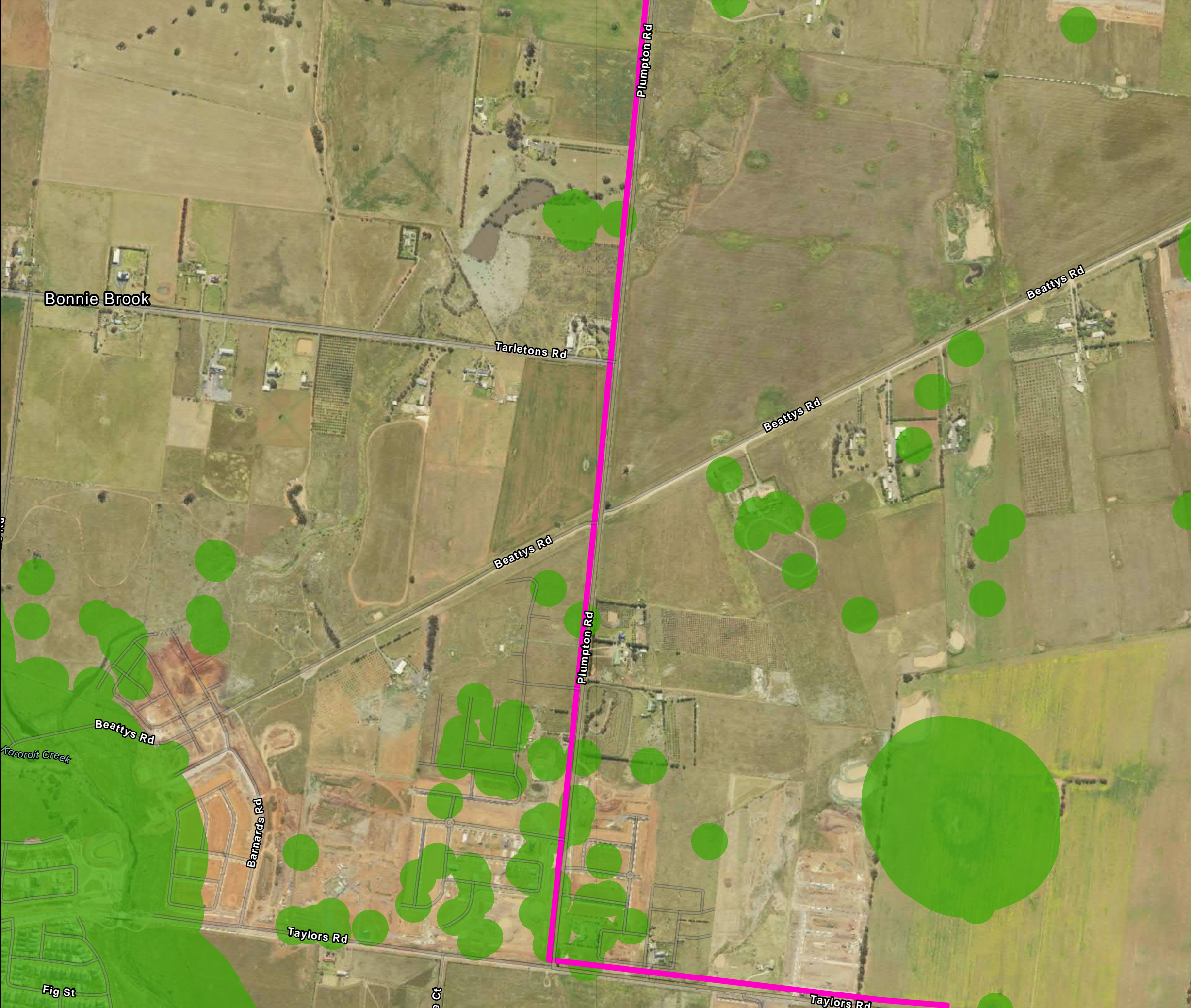
Metres

DATA SOURCES  
© Commonwealth of Australia (Geoscience Australia) 2006 Geodata Topo 250k Series 3; Vicmap Data © State of Victoria 2021; CH2M Beca 2021. Aerometrex Metromap 2021; ESRI Basemap 2021

COPYRIGHT: The concepts and information contained in this document are the copyright of Jacobs. Use or copying of the document in whole or in part without the written permission of Jacobs constitutes an infringement of copyright. Jacobs does not warrant that this document is definitive nor free of error and does not accept liability for any loss caused or arising from reliance upon information provided herein.







Legend

- S2M Interconnector Indicative Assessment Area (Option B)
- Areas of Cultural Heritage Sensitivity

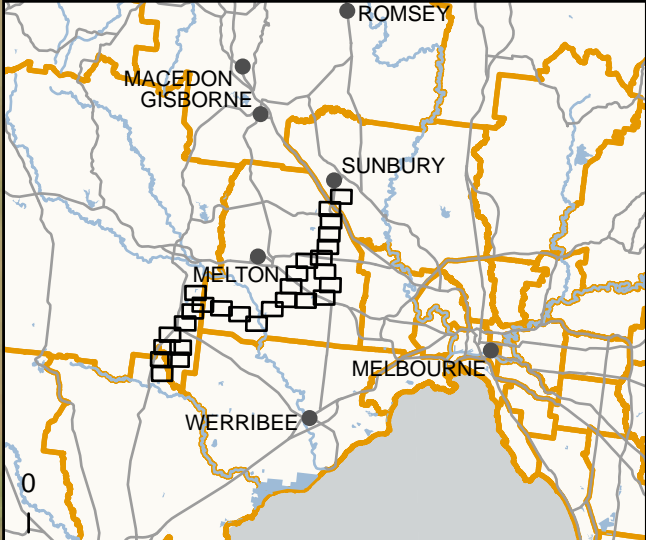
IS305300

0 250 500

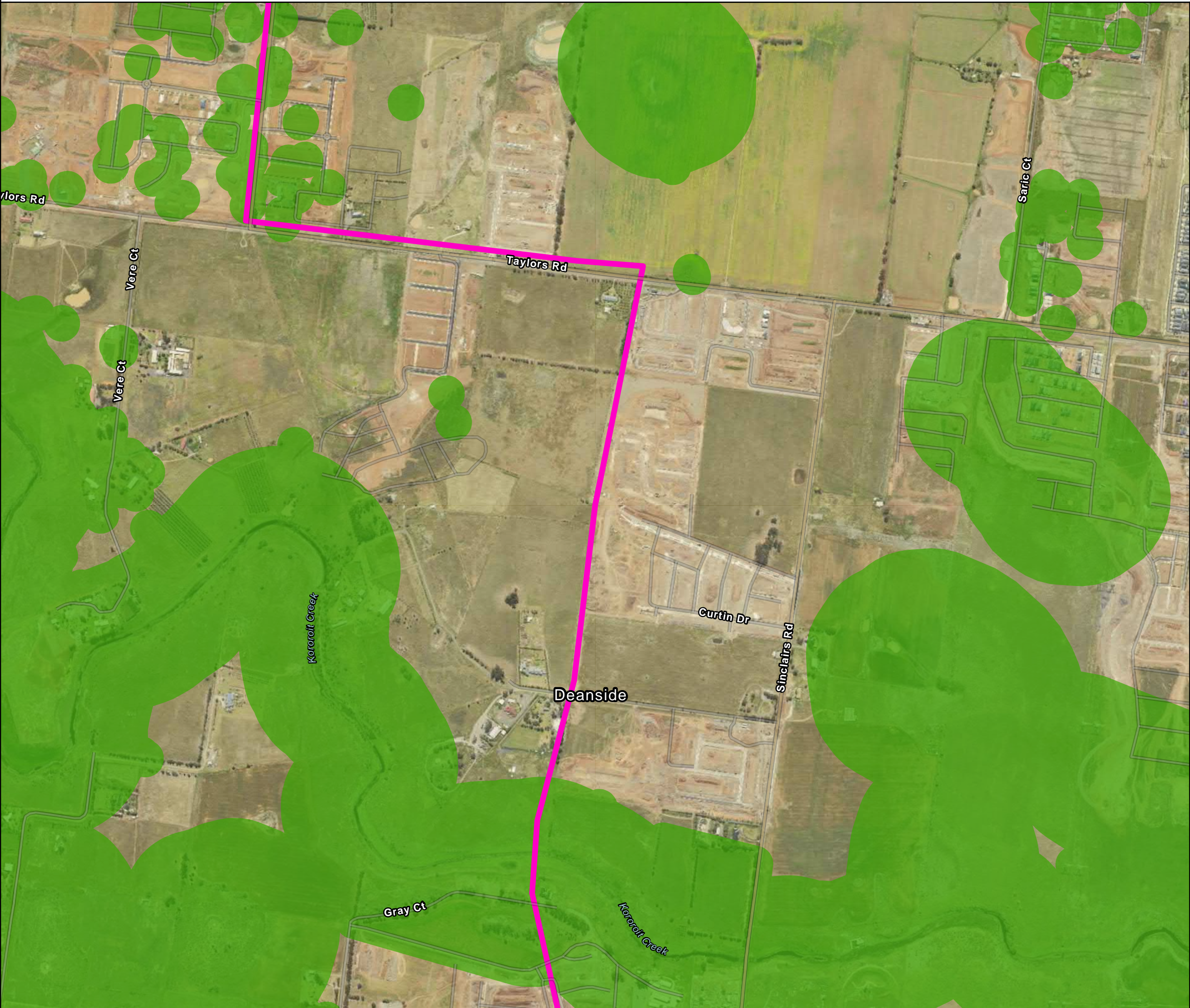
Metres

DATA SOURCES  
© Commonwealth of Australia (Geoscience Australia) 2006 Geodata Topo 250k Series 3; Vicmap Data © State of Victoria 2021; CH2M Beca 2021. Aerometrex Metromap 2021; ESRI Basemap 2021

COPYRIGHT: The concepts and information contained in this document are the copyright of Jacobs. Use or copying of the document in whole or in part without the written permission of Jacobs constitutes an infringement of copyright. Jacobs does not warrant that this document is definitive nor free of error and does not accept liability for any loss caused or arising from reliance upon information provided herein.







Legend

- S2M Interconnector Indicative Assessment Area (Option B)
- Areas of Cultural Heritage Sensitivity

0 250 500

Metres

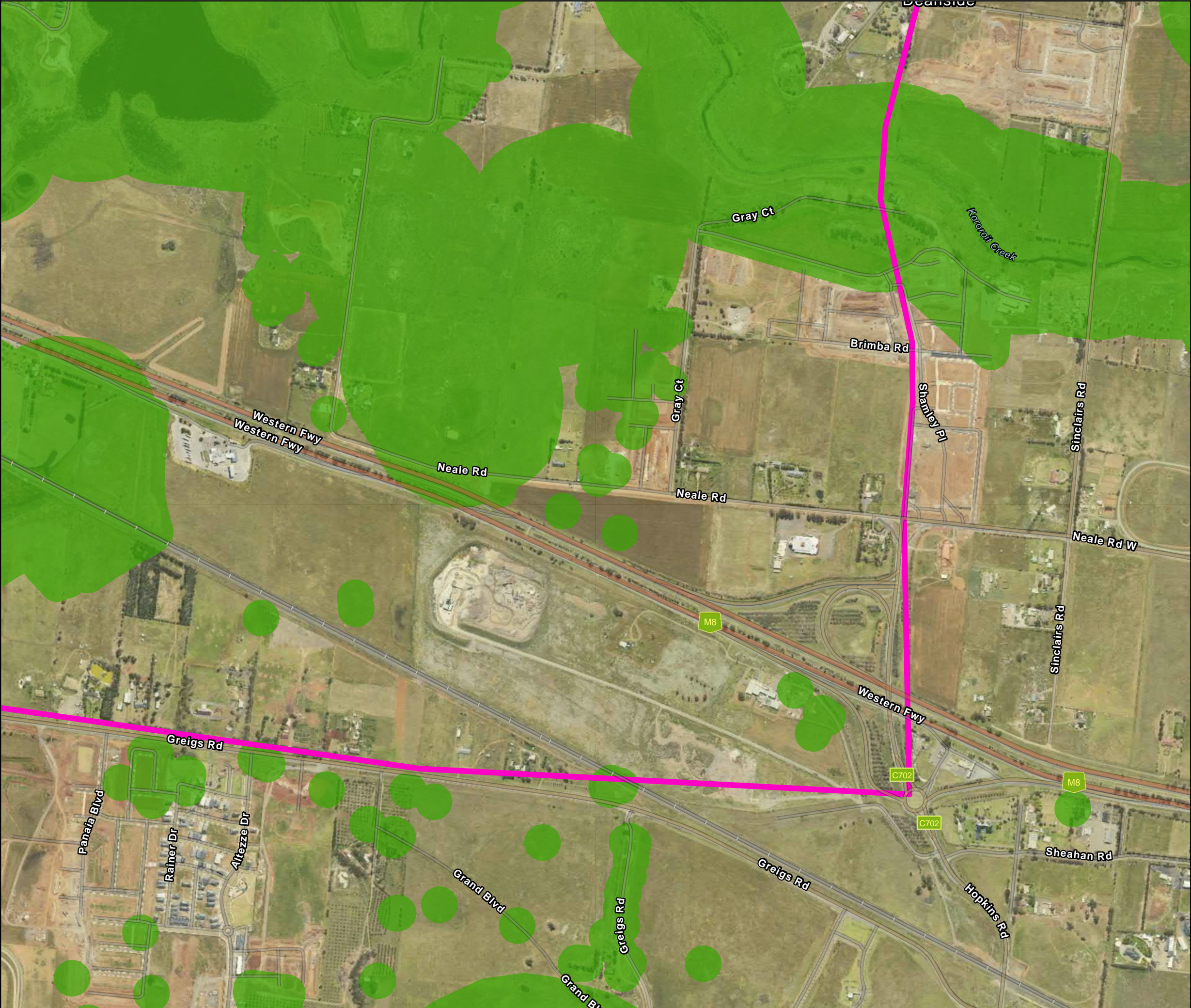
IS305300

DATA SOURCES

© Commonwealth of Australia (Geoscience Australia) 2006 Geodata Topo 250k Series 3; Vicmap Data © State of Victoria 2021; CH2M Beca 2021. Aerometrex Metromap 2021; ESRI Basemap 2021

COPYRIGHT: The concepts and information contained in this document are the copyright of Jacobs. Use or copying of the document in whole or in part without the written permission of Jacobs constitutes an infringement of copyright. Jacobs does not warrant that this document is definitive nor free of error and does not accept liability for any loss caused or arising from reliance upon information provided herein.





Legend

- S2M Interconnector Indicative Assessment Area (Option B)
- Areas of Cultural Heritage Sensitivity

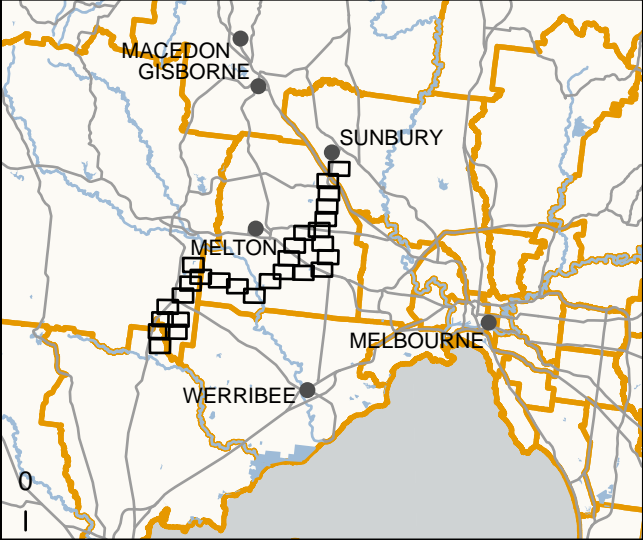
IS305300

0 250 500

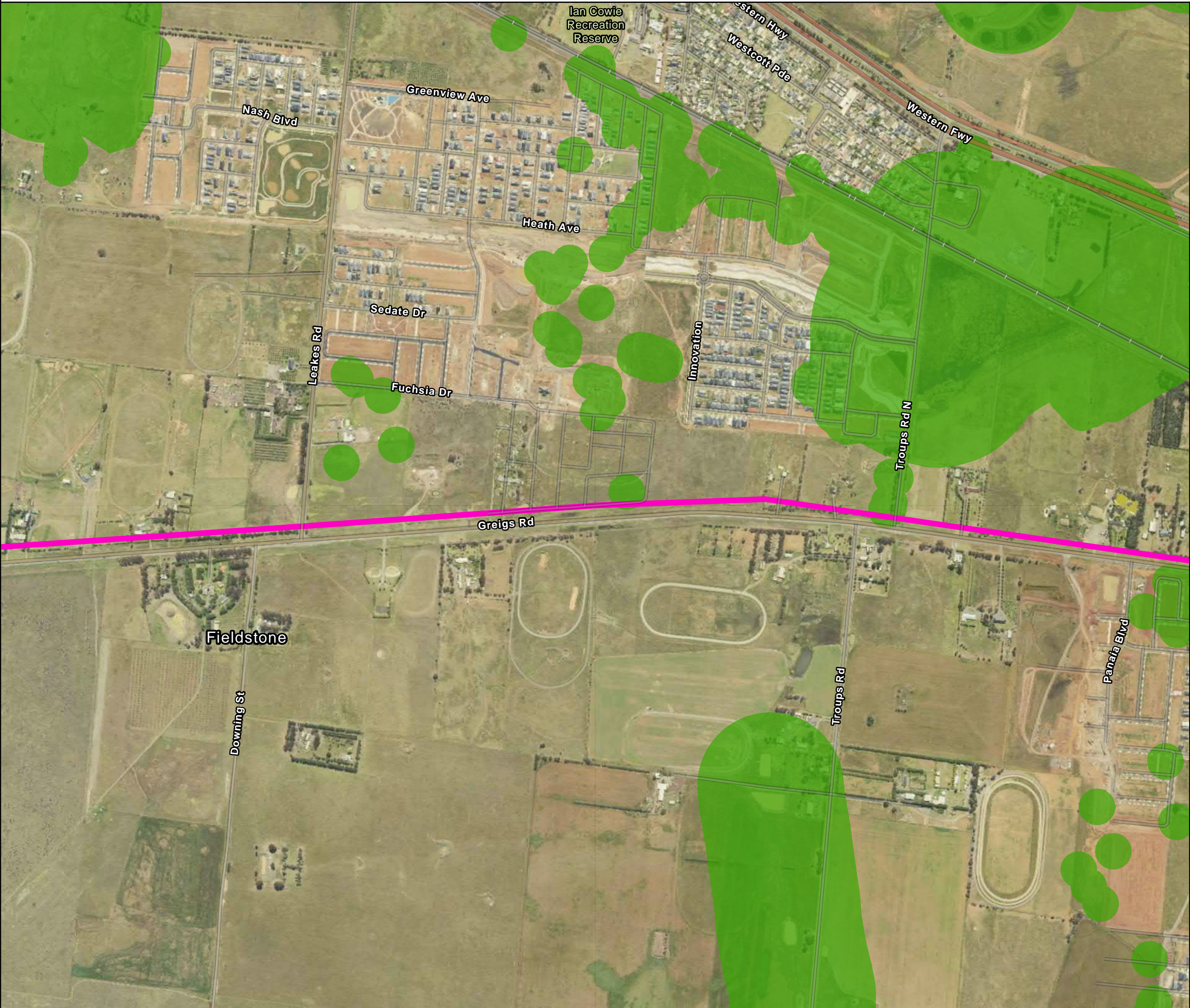
Metres

DATA SOURCES  
© Commonwealth of Australia (Geoscience Australia) 2006 Geodata Topo 250k Series 3; Vicmap Data © State of Victoria 2021; CH2M Beca 2021. Aerometrex Metromap 2021; ESRI Basemap 2021

COPYRIGHT: The concepts and information contained in this document are the copyright of Jacobs. Use or copying of the document in whole or in part without the written permission of Jacobs constitutes an infringement of copyright. Jacobs does not warrant that this document is definitive nor free of error and does not accept liability for any loss caused or arising from reliance upon information provided herein.







Legend

- S2M Interconnector Indicative Assessment Area (Option B)
- Areas of Cultural Heritage Sensitivity

0 250 500

Metres

IS305300

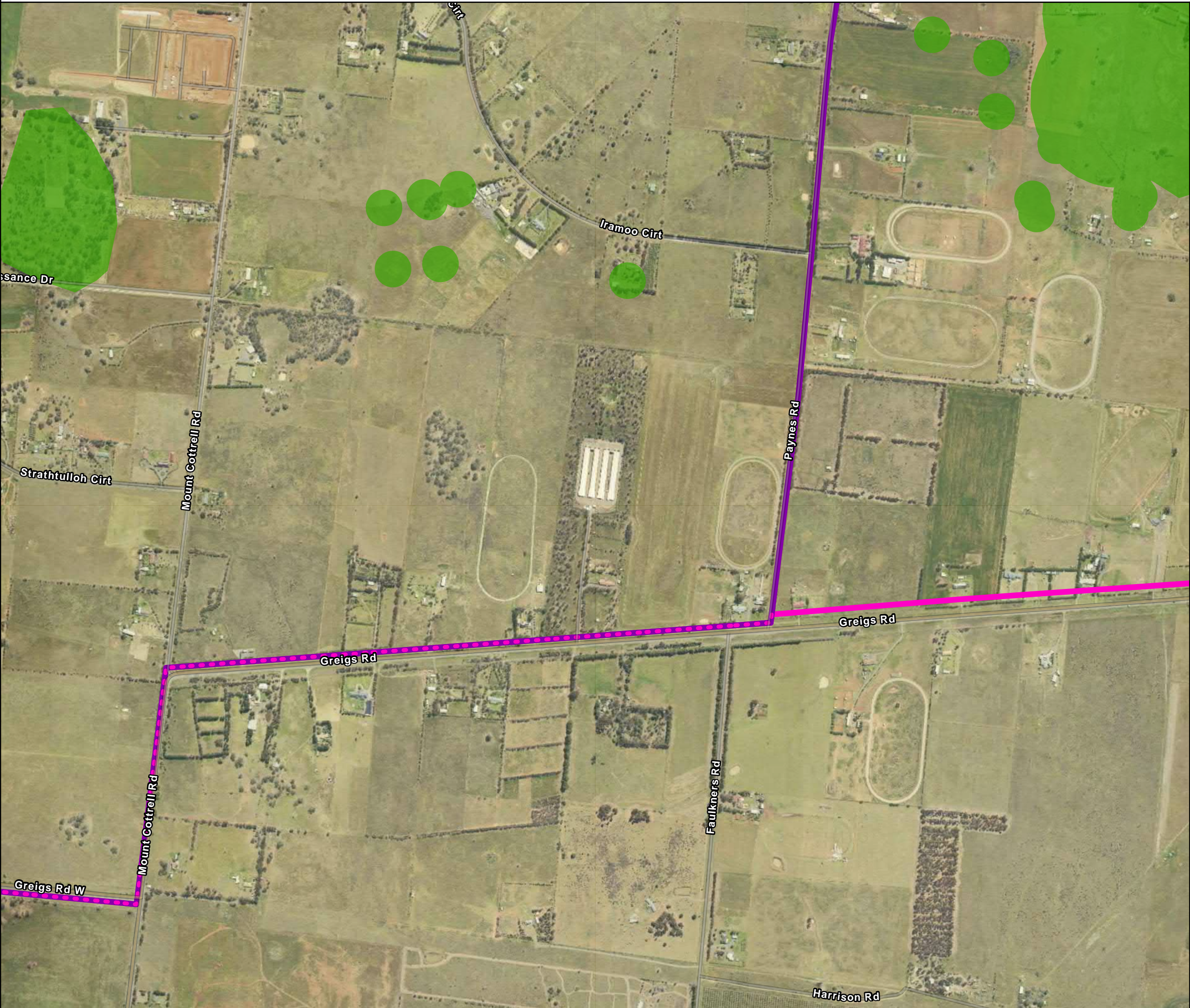
DATA SOURCES

© Commonwealth of Australia (Geoscience Australia) 2006 Geodata Topo 250k Series 3; Vicmap Data © State of Victoria 2021; CH2M Beca 2021. Aerometrex Metromap 2021; ESRI Basemap 2021

COPYRIGHT: The concepts and information contained in this document are the copyright of Jacobs. Use or copying of the document in whole or in part without the written permission of Jacobs constitutes an infringement of copyright. Jacobs does not warrant that this document is definitive nor free of error and does not accept liability for any loss caused or arising from reliance upon information provided herein.

0 1





Legend

- S2M Interconnector - Shared alignment
- S2M Interconnector Indicative Assessment Area (Option A)
- S2M Interconnector Indicative Assessment Area (Option B)
- Areas of Cultural Heritage Sensitivity

IS305300

0 250 500

Metres

DATA SOURCES  
© Commonwealth of Australia (Geoscience Australia) 2006 Geodata Topo 250k Series 3; Vicmap Data © State of Victoria 2021; CH2M Beca 2021. Aerometrex Metromap 2021; ESRI Basemap 2021

COPYRIGHT: The concepts and information contained in this document are the copyright of Jacobs. Use or copying of the document in whole or in part without the written permission of Jacobs constitutes an infringement of copyright. Jacobs does not warrant that this document is definitive nor free of error and does not accept liability for any loss caused or arising from reliance upon information provided herein.

