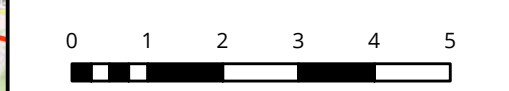


- Legend**
- Preliminary Pipeline Alignment
  - Existing pipeline
  - Kilometre Point
  - Melbourne Strategic Assessment extent
  - Conservation Area
  - Urban growth boundary
  - Public Acquisition Overlay
  - Outer Metropolitan Ring/ E6 Transport Corridor
  - PSP Boundaries

**Figure 10. Overview Western Outer Ring Main preliminary alignment in relation to the Melbourne Strategic Assessment Biodiversity Conservation Strategy extent**



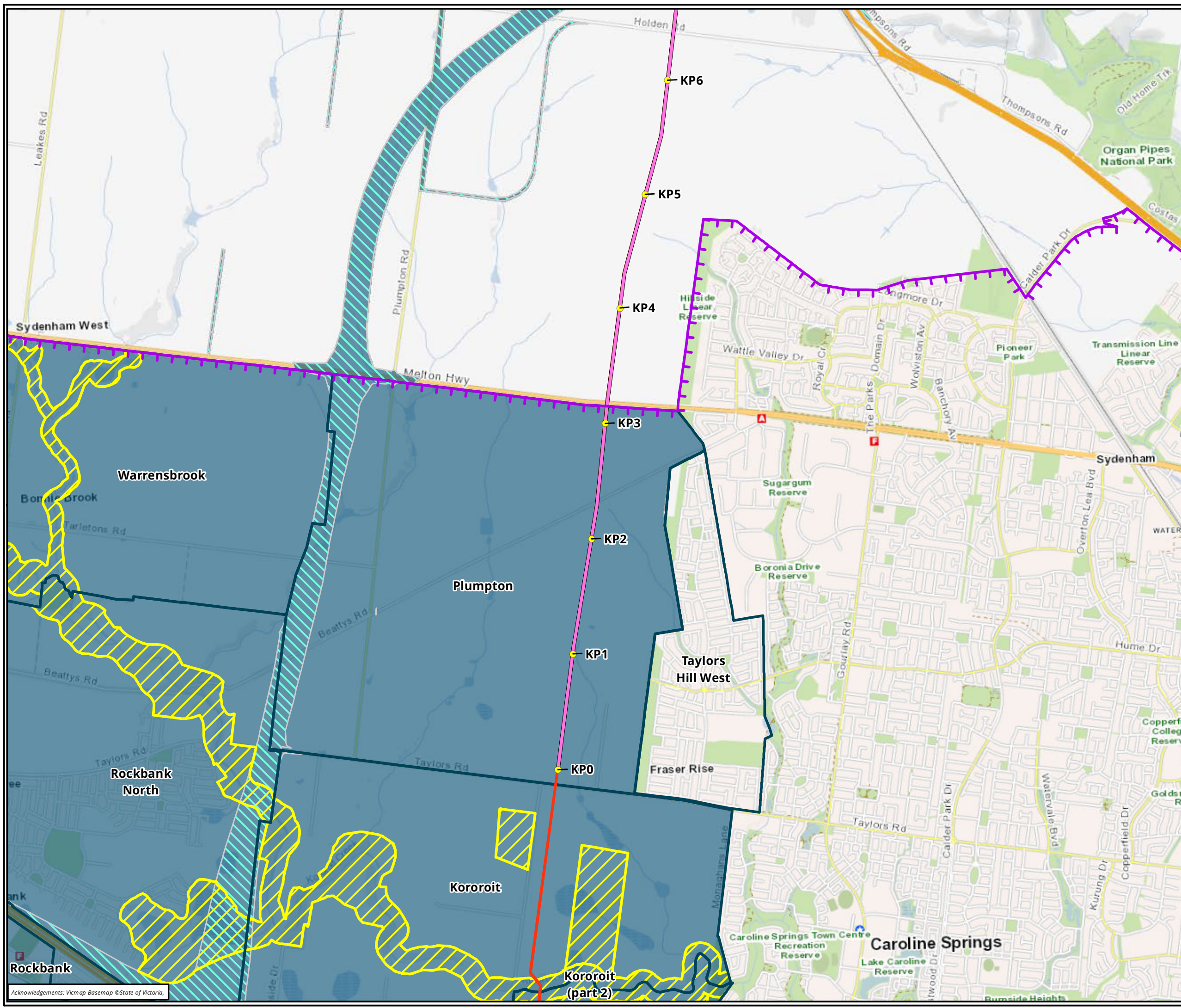
Kilometres  
Scale: 1:100,000 @ A3  
Coordinate System: GDA 1994 MGA Zone 55



Acknowledgements: Vicmap Basemap ©State of Victoria.

Matter: 30829,  
Date: 14 October 2019,  
Checked by: SCC, Drawn by: DK, Last edited by: jturner  
Location: P:\30800s\30829\Mapping\30829\_F1\_MSA.mxd





- Legend**
- Preliminary Pipeline Alignment
  - Existing pipeline
  - Kilometre Point
  - Melbourne Strategic Assessment extent
  - Conservation Area
  - Urban growth boundary
  - Public Acquisition Overlay
  - Outer Metropolitan Ring/E6 Transport Corridor
  - PSP Boundaries

**Figure 10.1 Western Outer Ring Main preliminary alignment in relation to the Melbourne Strategic Assessment Biodiversity Conservation Strategy extent**

0 0.3 0.6 0.9 1.2 1.5  
 Kilometres

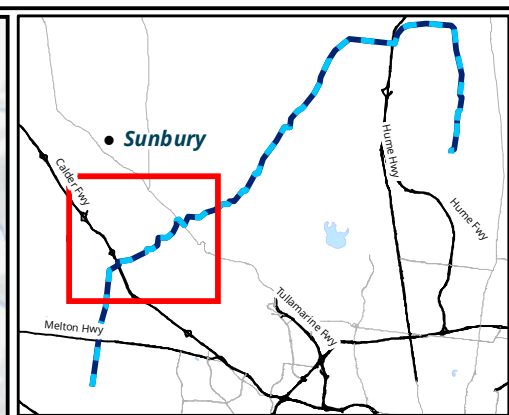
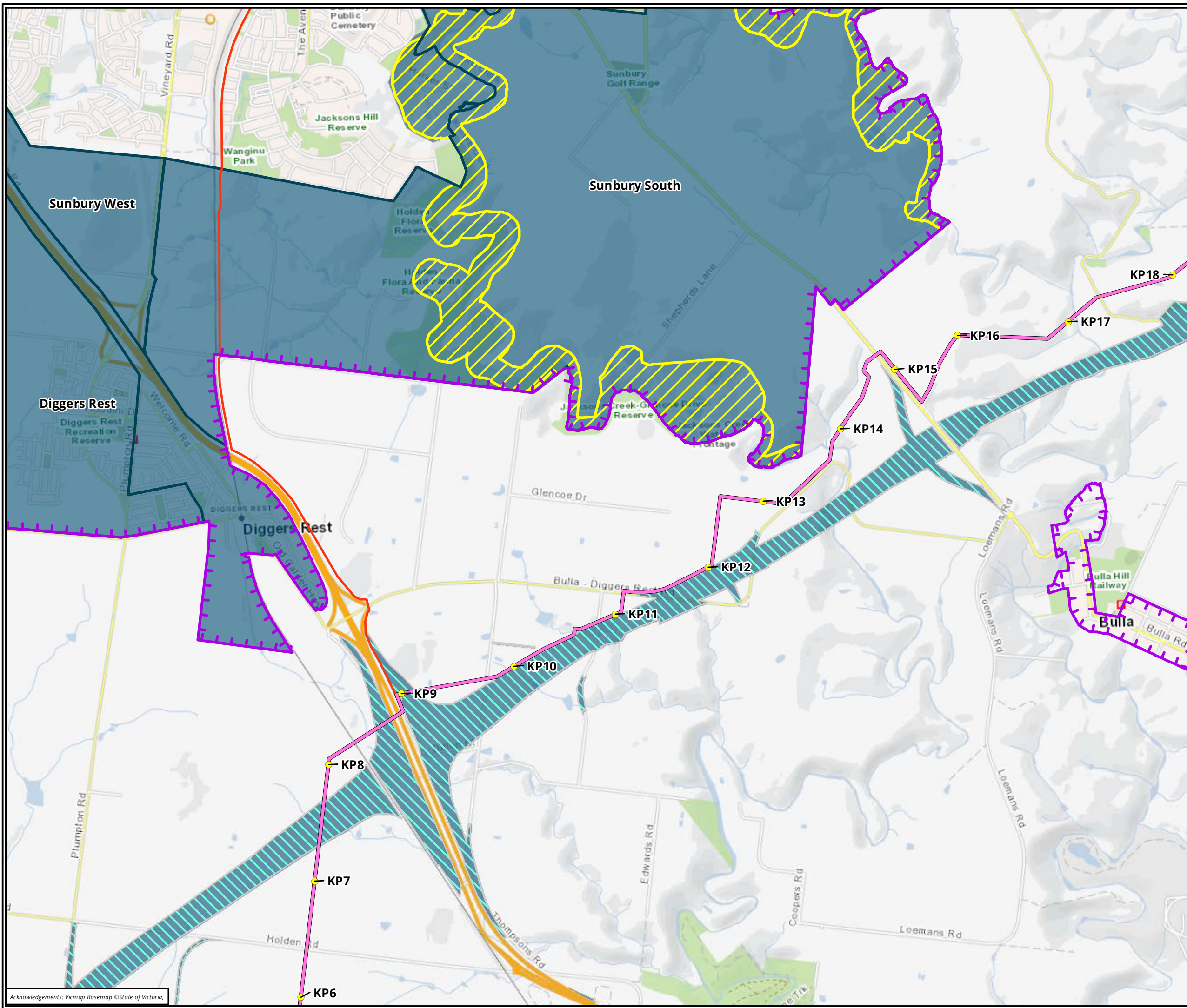
Scale: 1:30,000 @ A3  
 Coordinate System: GDA 1994 MGA Zone 55



Matter: 30829,  
 Date: 14 October 2019,  
 Checked by: SCC, Drawn by: DK, Last edited by: jturner  
 Location: P:\30800s\30829\Mapping\30829\_F1\_MSA.mxd

Acknowledgements: Vicmap Basemap ©State of Victoria,





- Legend**
- Preliminary Pipeline Alignment
  - Existing pipeline
  - Kilometre Point
  - Melbourne Strategic Assessment extent
  - Conservation Area
  - Urban growth boundary
  - Public Acquisition Overlay
  - Outer Metropolitan Ring/ E6 Transport Corridor
  - PSP Boundaries

**Figure 10.2 Western Outer Ring Main preliminary alignment in relation to the Melbourne Strategic Assessment Biodiversity Conservation Strategy extent**

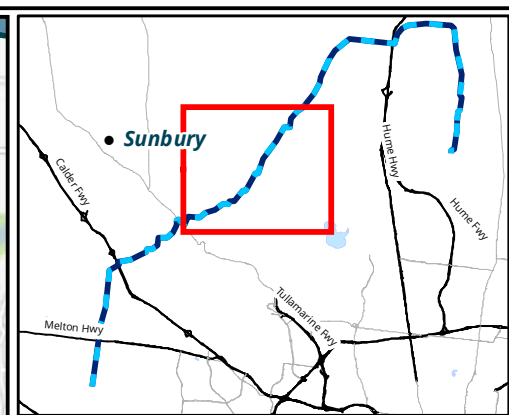
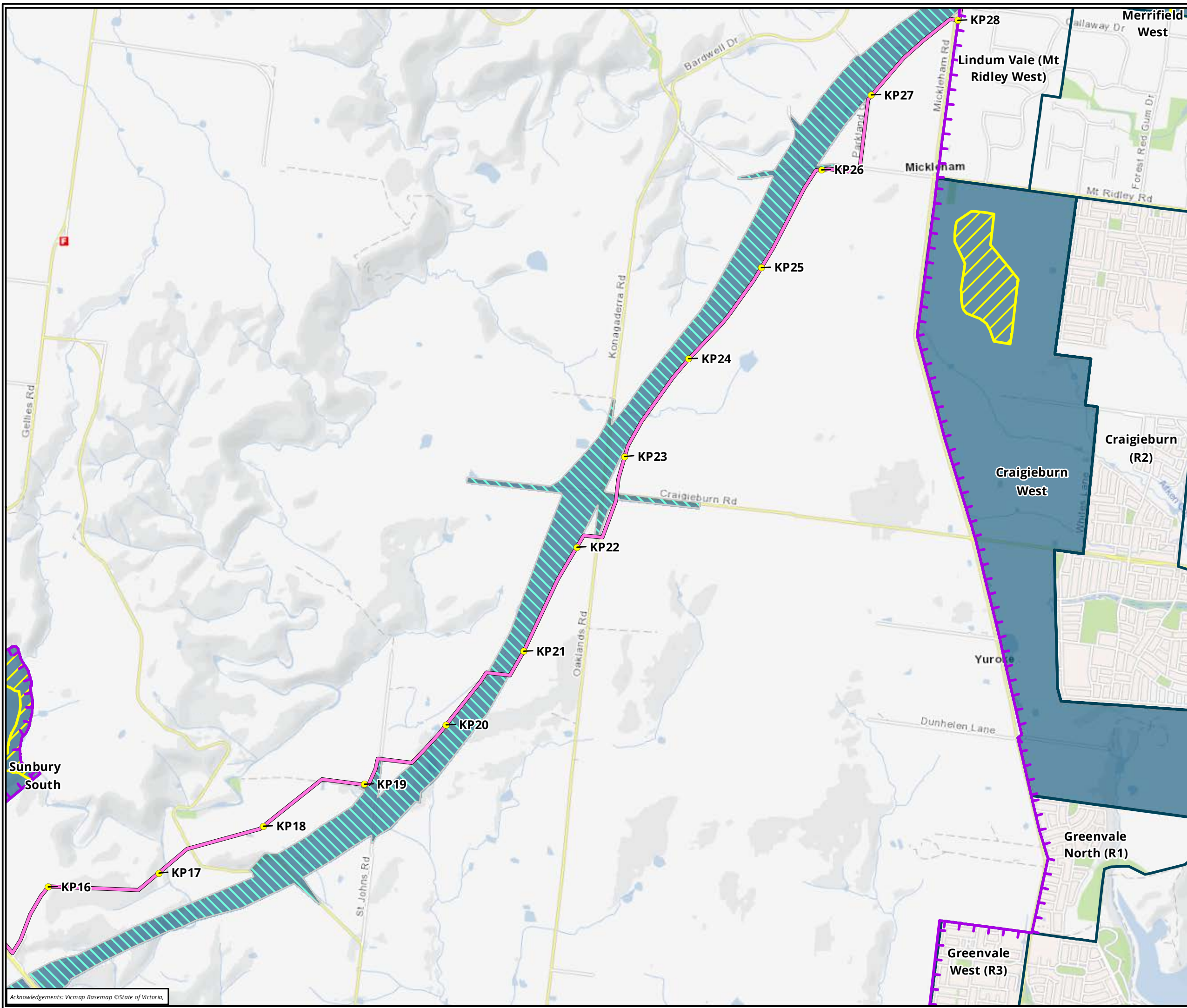
0 0.3 0.6 0.9 1.2 1.5  
 Kilometres  
 Scale: 1:30,000 @ A3  
 Coordinate System: GDA 1994 MGA Zone 55



Acknowledgements: Vicmap Basemap ©State of Victoria.

Matter: 30829,  
 Date: 14 October 2019,  
 Checked by: SCC, Drawn by: DK, Last edited by: jturner  
 Location: P:\30800s\30829\Mapping\30829\_F1\_MSA.mxd





- Legend**
- Preliminary Pipeline Alignment
  - Kilometre Point
  - Melbourne Strategic Assessment extent
  - Conservation Area
  - Urban growth boundary
  - Public Acquisition Overlay
  - Outer Metropolitan Ring/ E6 Transport Corridor
  - PSP Boundaries

**Figure 10.3 Western Outer Ring Main preliminary alignment in relation to the Melbourne Strategic Assessment Biodiversity Conservation Strategy extent**

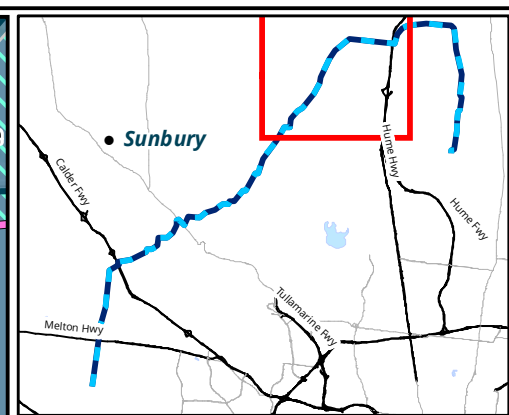
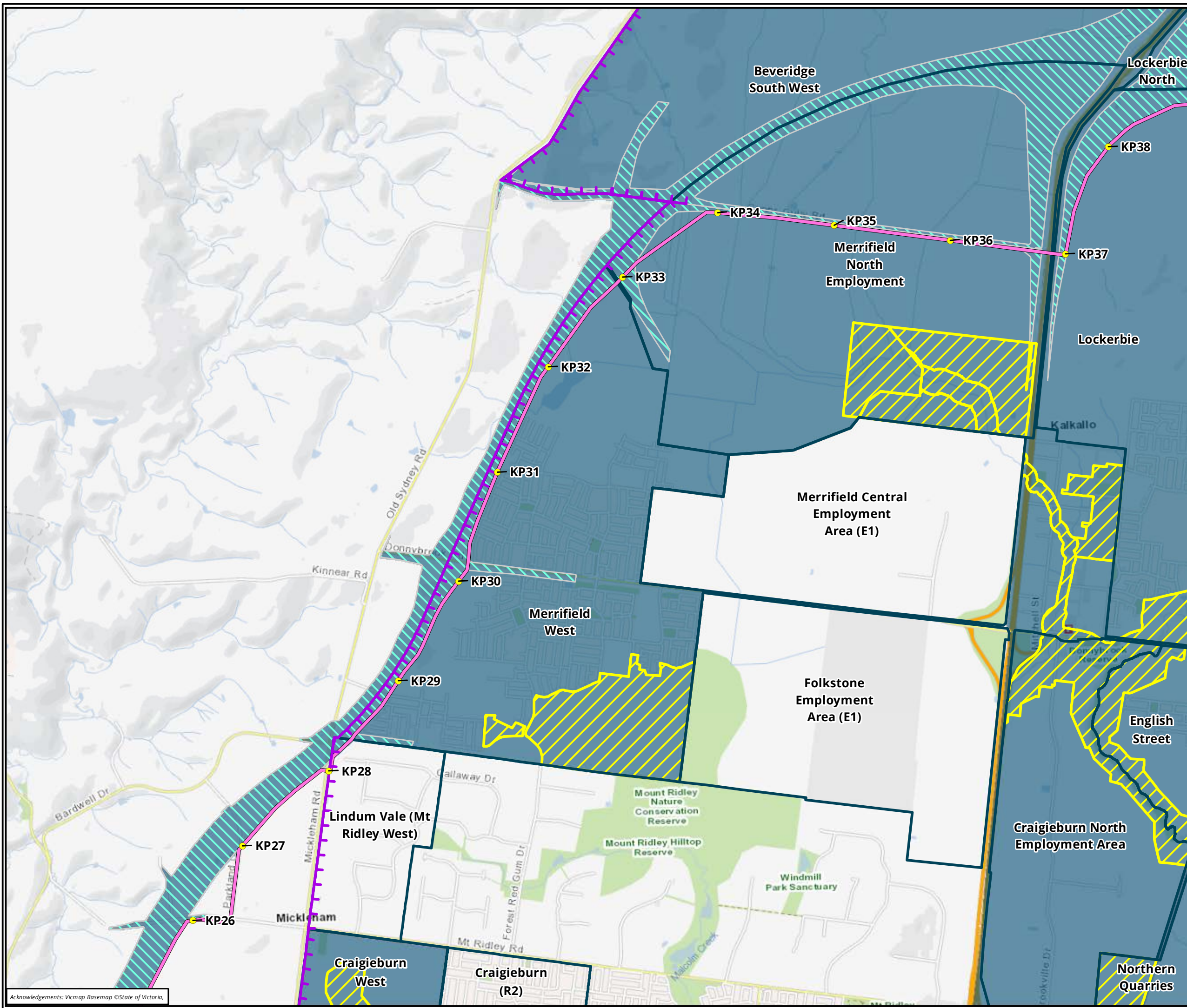
0 0.3 0.6 0.9 1.2 1.5  
 Kilometres  
 Scale: 1:30,000 @ A3  
 Coordinate System: GDA 1994 MGA Zone 55



Acknowledgements: Vicmap Basemap ©State of Victoria.

Matter: 30829,  
 Date: 14 October 2019,  
 Checked by: SCC, Drawn by: DK, Last edited by: jturner  
 Location: P:\30800s\30829\Mapping\30829\_F1\_MSA.mxd





- Legend**
- Preliminary Pipeline Alignment
  - Kilometre Point
  - Melbourne Strategic Assessment extent
  - Conservation Area
  - Urban growth boundary
  - Public Acquisition Overlay
  - Outer Metropolitan Ring/E6 Transport Corridor
  - PSP Boundaries

**Figure 10.4 Western Outer Ring Main preliminary alignment in relation to the Melbourne Strategic Assessment Biodiversity Conservation Strategy extent**

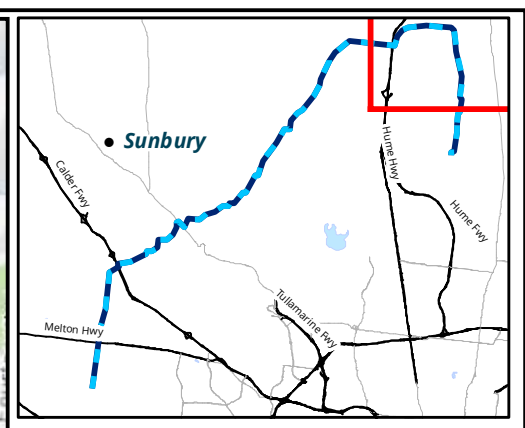
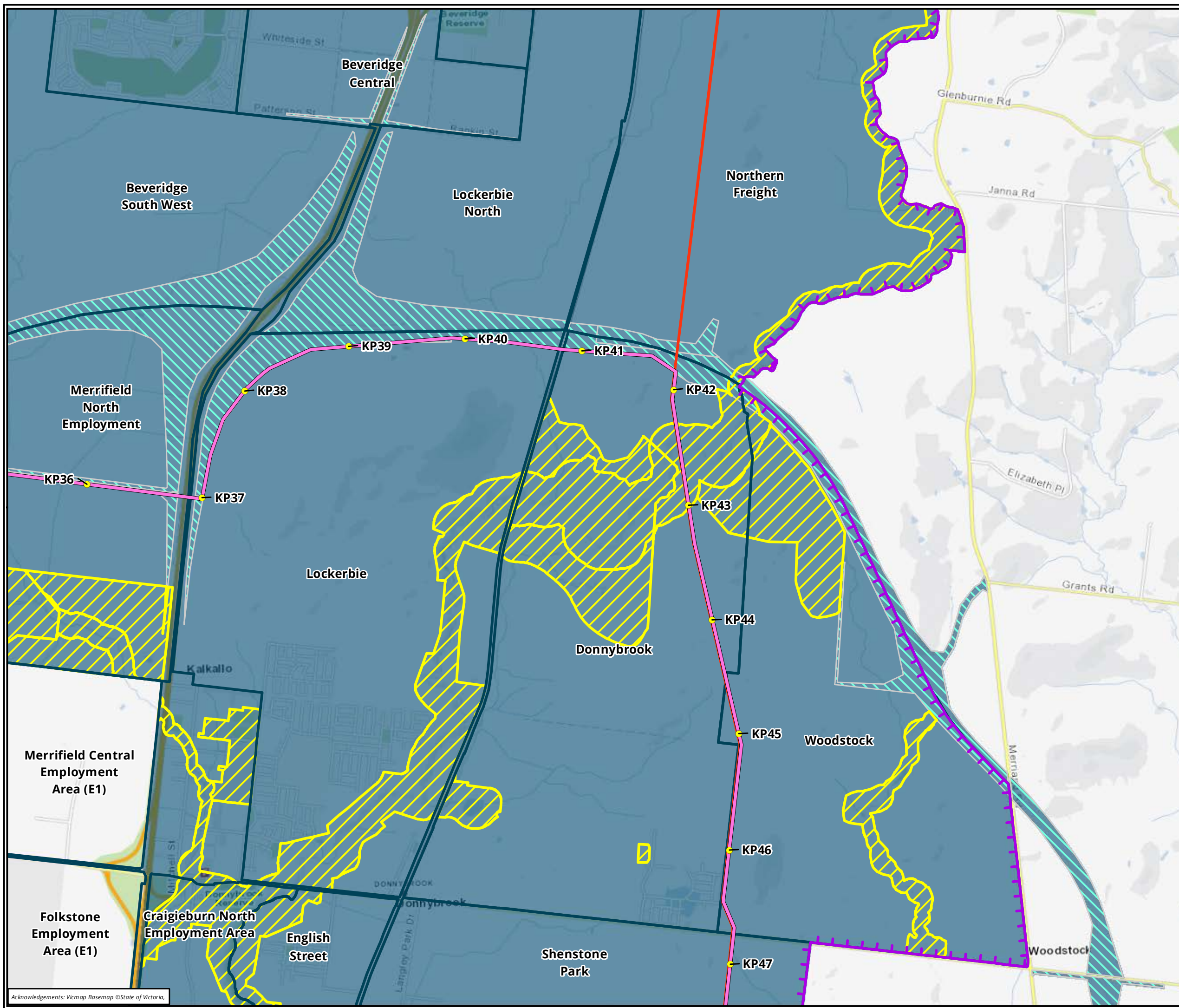
0 0.3 0.6 0.9 1.2 1.5  
 Kilometres  
 Scale: 1:30,000 @ A3  
 Coordinate System: GDA 1994 MGA Zone 55



Matter: 30829,  
 Date: 14 October 2019,  
 Checked by: SCC, Drawn by: DK, Last edited by: jturner  
 Location: P:\30800s\30829\Mapping\30829\_F1\_MSA.mxd

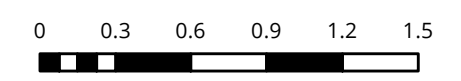
Acknowledgements: Vicmap Basemap ©State of Victoria.





- Legend**
- Preliminary Pipeline Alignment
  - Existing pipeline
  - Kilometre Point
  - Melbourne Strategic Assessment extent
  - Conservation Area
  - Urban growth boundary
  - Public Acquisition Overlay
  - Outer Metropolitan Ring/ E6 Transport Corridor
  - PSP Boundaries

**Figure 10.5 Western Outer Ring Main preliminary alignment in relation to the Melbourne Strategic Assessment Biodiversity Conservation Strategy extent**



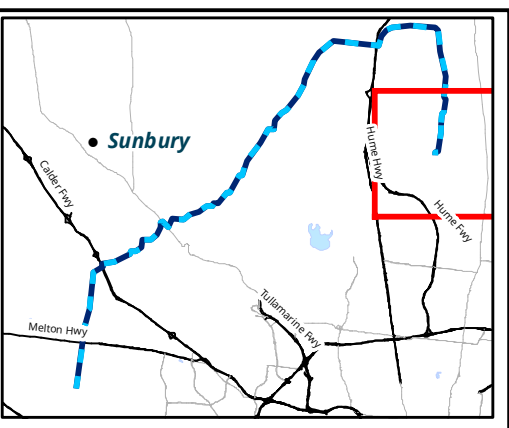
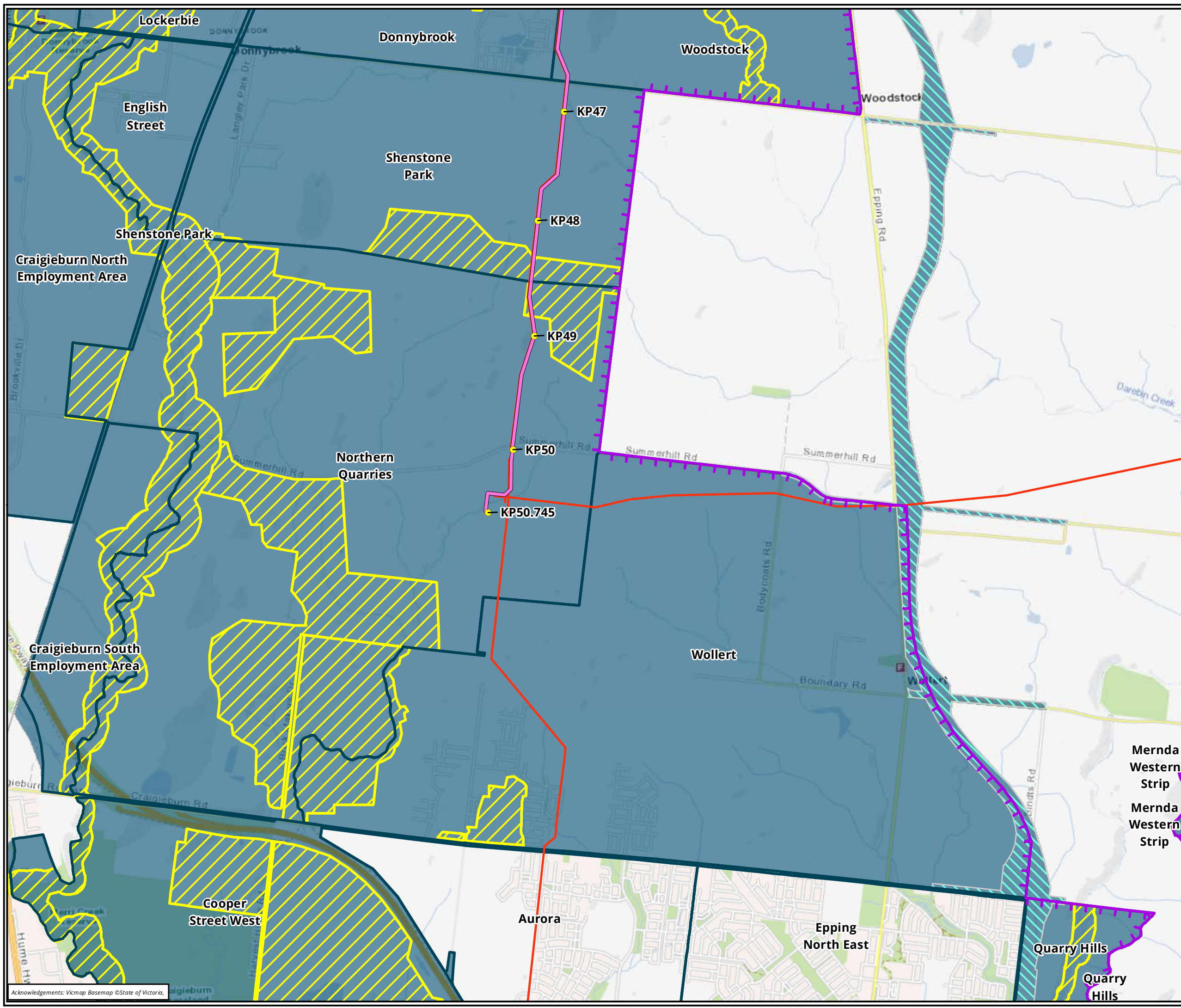
Kilometres  
Scale: 1:30,000 @ A3  
Coordinate System: GDA 1994 MGA Zone 55



Matter: 30829,  
Date: 14 October 2019,  
Checked by: SCC, Drawn by: DK, Last edited by: jturner  
Location: P:\30800s\30829\Mapping\30829\_F1\_MSA.mxd

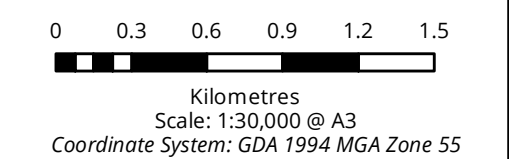
Acknowledgements: Vicmap Basemap ©State of Victoria.





- Legend**
- Preliminary Pipeline Alignment
  - Existing pipeline
  - Kilometre Point
  - Melbourne Strategic Assessment extent
  - Conservation Area
  - Urban growth boundary
  - Public Acquisition Overlay
  - Outer Metropolitan Ring/ E6 Transport Corridor
  - PSP Boundaries

**Figure 10.6 Western Outer Ring Main preliminary alignment in relation to the Melbourne Strategic Assessment Biodiversity Conservation Strategy extent**



Matter: 30829, Date: 14 October 2019, Checked by: SCC, Drawn by: DK, Last edited by: jturner, Location: P:\30800s\30829\Mapping\30829\_F1\_MSA.mxd

Acknowledgements: Vicmap Basemap ©State of Victoria.