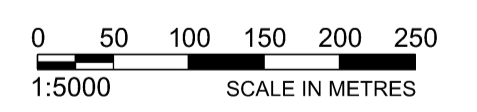
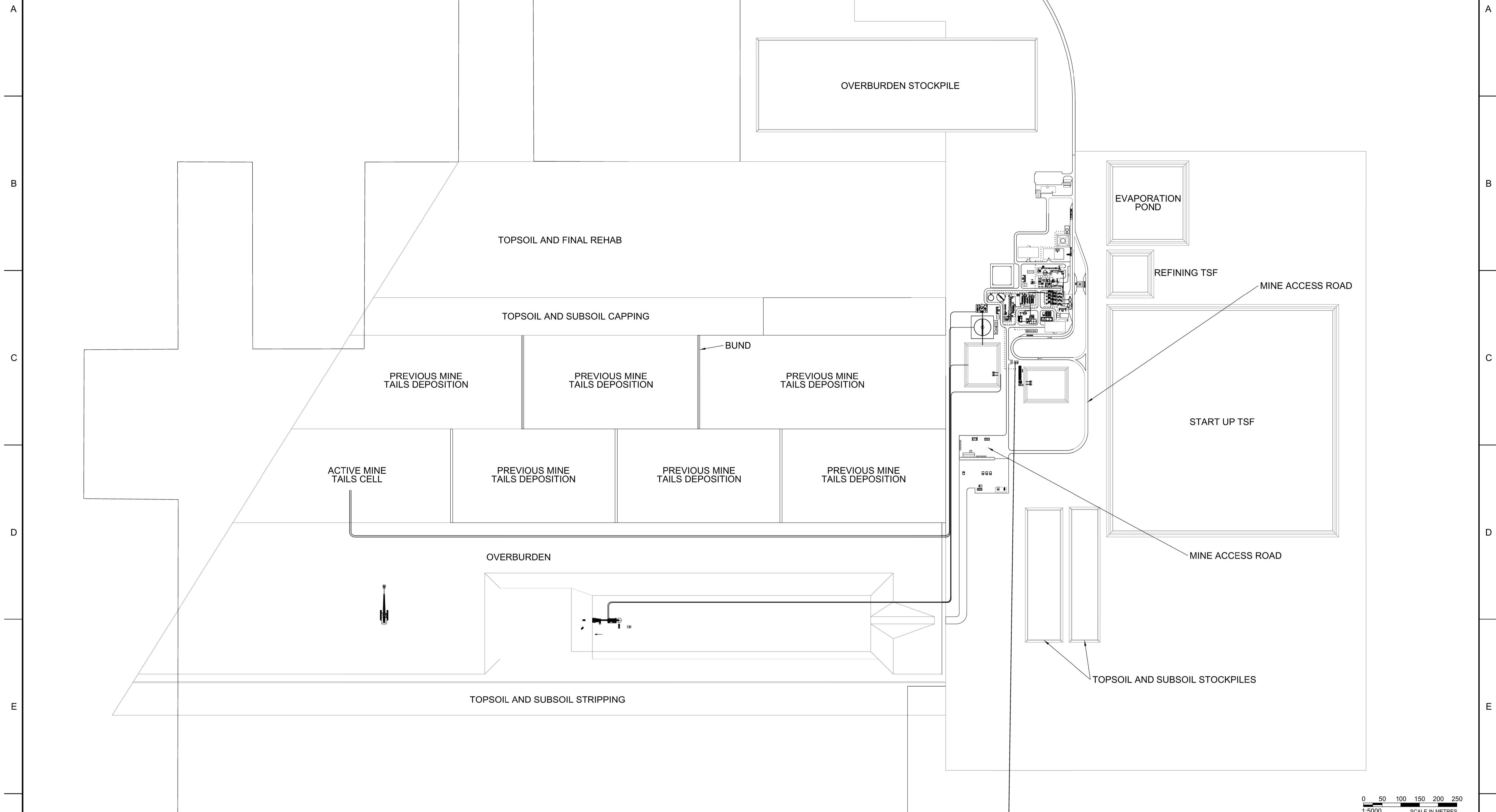


DRAWING No.		DRAWING TITLE		REG. PROFESSIONAL		1 Sheet 1:1000 Plan		THIS DRAWING WAS PREPARED FOR THE EXCLUSIVE USE OF ILUKA RESOURCES LTD (CLIENT) AND IS ISSUED PURSUANT TO PO NUMBER 420043501 BETWEEN CLIENT AND HATCH PTY LTD ("HATCH"). UNLESS OTHERWISE AGREED IN WRITING WITH CLIENT OR SPECIFIED ON THIS DRAWING, HATCH DOES NOT ACCEPT AND DISCLAIMS ANY AND ALL LIABILITY OR RESPONSIBILITY ARISING FROM ANY USE OF OR RELIANCE ON THIS DRAWING BY ANY THIRD PARTY OR ANY MODIFICATION OR MISUSE OF THIS DRAWING BY CLIENT, AND (B) THIS DRAWING IS CONFIDENTIAL AND ALL INTELLECTUAL PROPERTY RIGHTS EMBODIED OR REFERENCED IN THIS DRAWING REMAIN THE PROPERTY OF HATCH.		HATCH				ILUKA RESOURCES FINE MINERAL SAND PROJECT			
B APPROVED FOR USE		SD FB 08/11/18		DRAFTSPERSON		S DENNISON NR 9/11/18		DESIGNER		S DENNISON NR 9/11/18		PROCESS PLANT					
A ISSUED FOR INTERNAL REVIEW		SD FB 07/11/18		CHECKER		F BLANCHET 9/11/18		DESIGN COORD.		R BURATTO 9/11/19		GENERAL ARRANGEMENT					
No.		DESCRIPTION		BY		CHK'D		DATE		ROLE		NAME		SIGNATURE		DATE	
										DRAWING APPROVAL STATUS:		Approved for Use		SCALE		DWG. No.	
												1:1,000		H358357-00000-203-270-0001		REV	
												OR AS NOTED		B		SHEET SIZE: A1	

11:26
 sdc_dwservice
 iluka\murray_basini\H358357\203 - Layout Design Coordination and General Drawings\H358357-00000-203-270-0001.dgn

H358357-00000-203-270-0002
DWG. No.



DRAWING No.		DRAWING TITLE		REG. PROFESSIONAL		REVISIONS		DRAWING APPROVAL STATUS: Approved for Use		SCALE 1:5,000 OR AS NOTED		DWG. No. H358357-00000-203-270-0002		REV C	
1		2		3		4		5		6		7		8	

THIS DRAWING WAS PREPARED FOR THE EXCLUSIVE USE OF ILUKA RESOURCES LTD (CLIENT) AND IS ISSUED PURSUANT TO PO NUMBER 450043001 BETWEEN CLIENT AND HATCH PTY LTD ("HATCH"). UNLESS OTHERWISE AGREED IN WRITING WITH CLIENT OR SPECIFIED ON THIS DRAWING, HATCH DOES NOT ACCEPT AND DISCLAIMS ANY AND ALL LIABILITY OR RESPONSIBILITY ARISING FROM ANY USE OF OR RELIANCE ON THIS DRAWING BY ANY THIRD PARTY OR ANY MODIFICATION OR MISUSE OF THIS DRAWING BY CLIENT. AND (B) THIS DRAWING IS CONFIDENTIAL AND ALL INTELLECTUAL PROPERTY RIGHTS EMBODIED OR REFERENCED IN THIS DRAWING REMAIN THE PROPERTY OF HATCH.



ILUKA RESOURCES
FINE MINERAL SAND PROJECT
PROCESS PLANT
PLOT PLAN

DRAFTSPERSON			
DESIGNER	S DENNISON	NR	16/01/19
CHECKER	F BLANCHET		16/01/19
DESIGN COORD.			
RESP. ENG.	R BURATTO		16/01/19
LEAD DISC. ENG.			
ENG. MANAGER			
PROJ. MANAGER	F BLANCHET	NR	16/01/19

No.	DESCRIPTION	BY	CHK'D	DATE
C	ISSUED FOR USE	DCA	FB	16/01/19
B	ISSUED FOR USE	SD	FB	09/07/18
A	ISSUED FOR INTERNAL REVIEW	SD	FB	07/11/18

8:27:07 AM
 c:\p\project\hatch\h358357\dwg_data\source\d0143444\H358357-00000-203-270-0002.dgn