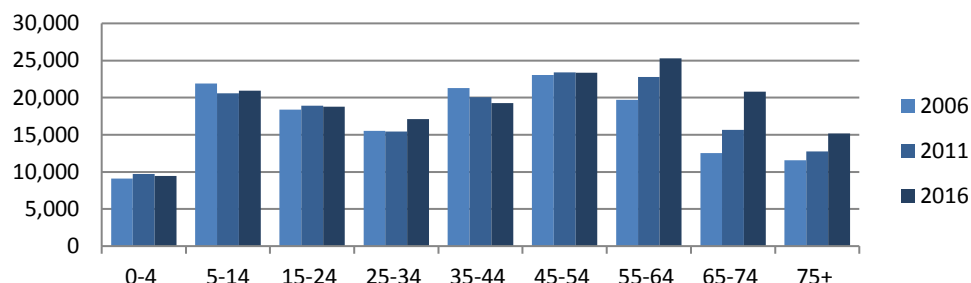


## Hume (SA4)

Count of persons by Usual Residence	Total 2006	153,015	Period	5-year change	Annual rate
	Total 2011	159,294	2006-11	6,279 increase	0.8% p.a.
	Total 2016	170,194	2011-16	10,900 increase	1.3% p.a.

### Age Structure, 2006 to 2016

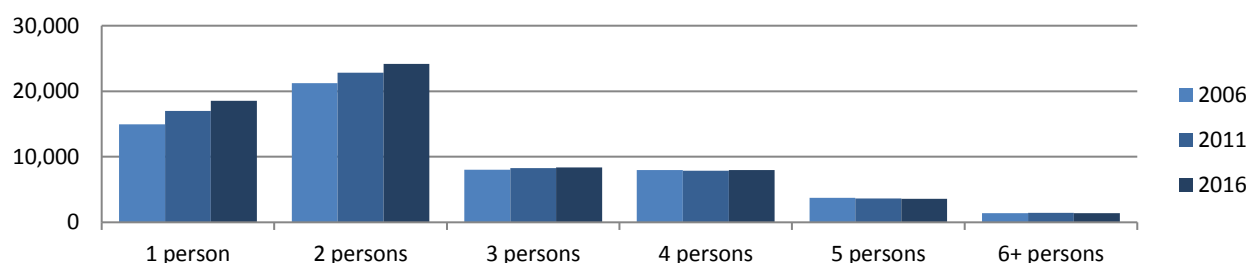


### Proportions 2016

0-4 yrs	5.6%
5-14 yrs	12.3%
15-24 yrs	11.0%
25-34 yrs	10.1%
35-44 yrs	11.3%
45-54 yrs	13.7%
55-64 yrs	14.9%
65-74 yrs	12.2%
75+ yrs	8.9%

	2006	2011	2016
Median population age in years	40	42	44
Proportion indigenous persons	0.9%	1.2%	1.6%
Proportion Australian citizens	92.2%	92.1%	89.0%
Proportion born in Australia	85.2%	85.6%	81.6%
Proportion born elsewhere	9.5%	9.8%	9.7%
Proportion speaking English only at home	92.1%	92.0%	87.9%
Proportion speaking other language at home	4.0%	4.2%	4.6%

### Number of households by number of persons usually resident, 2006 to 2016



	2006	2011	2016
Average household size	2.5	2.4	2.4
Average persons per bedroom	0.8	0.8	0.8
Proportion of households with children	38.5%	36.5%	33.8%
Proportion couple-only households	28.5%	28.9%	28.3%
Proportion lone person households	24.8%	26.5%	26.6%
Proportion group households	2.6%	2.5%	2.5%
Proportion of dwellings rented	24.1%	24.7%	23.8%
Proportion owned with mortgage	37.6%	36.8%	35.7%
Proportion owned outright	32.0%	32.3%	30.6%