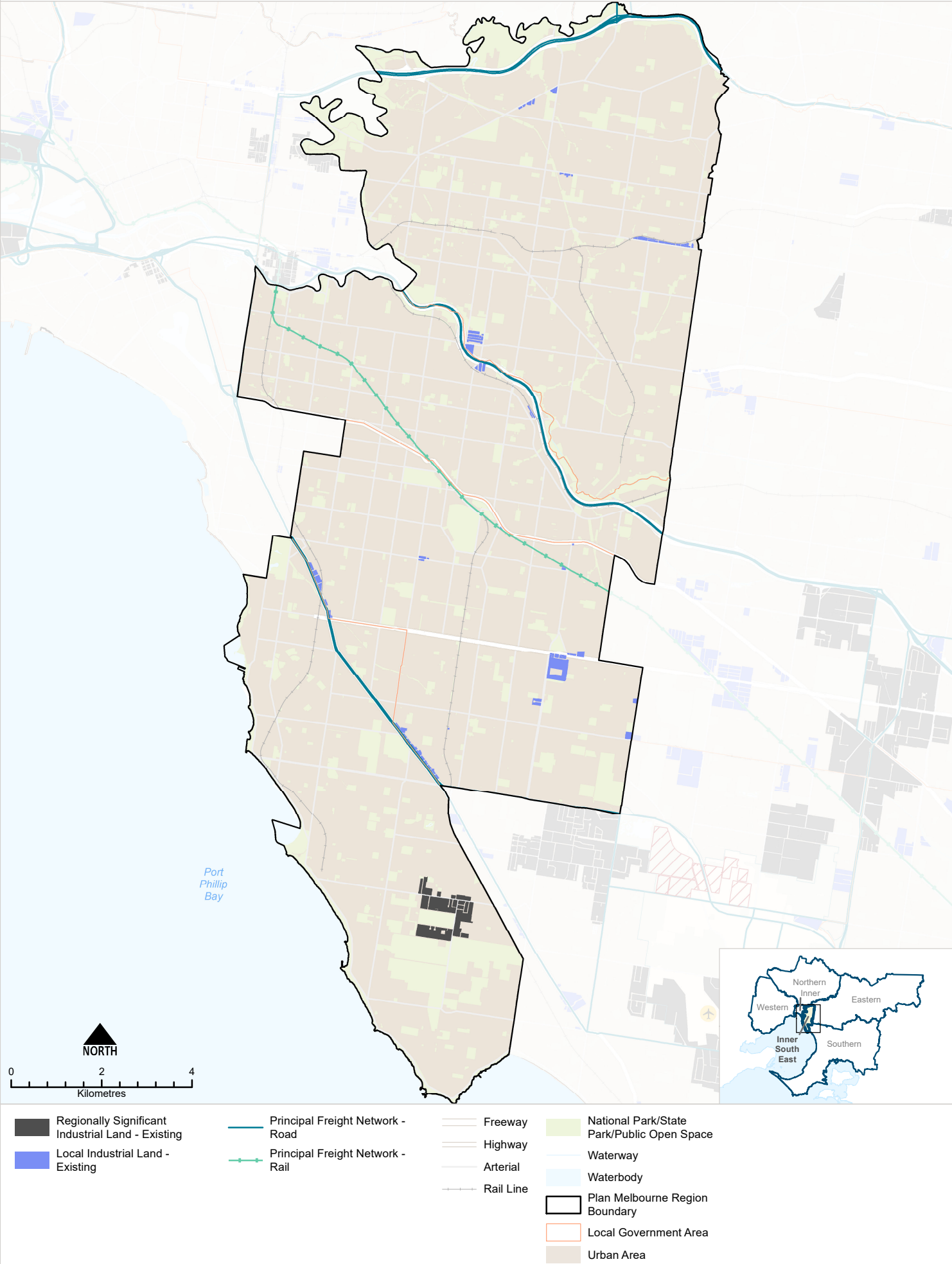


Melbourne Industrial and Commercial Land Use Plan

Map 14: Inner South East Region Industrial Land



NOTE: The Principal Freight Network reflects the version published in 2013 (Victoria the Freight State – the Victorian Freight and Logistics Plan, August 2013) in addition to Mordialloc Highway and West Gate Tunnel. East West Link has been removed. The Department of Transport are currently undertaking a review of the Principal Freight Network and will publish an updated one later in 2020.