

Character Area 2.1 Forested Hills

2.1 FORESTED HILLS

Blanketed in thick vegetation the extinct volcanoes, textured ridges and steep slopes of this Character Area straddle the Great Dividing Range.

This rugged landscape is home to the source of numerous Victorian rivers including the Lerderderg, Campaspe, Moorabool, and Loddon rivers. The area is known for its extent of mineral springs which have been supplemented by the historic volcanic activity.

Key Features

- Thick vegetation cover
- Walking tracks and recreational opportunities
- Mineral springs
- Lerderderg River & Gorge
- Gold mining relics

Settlements

- No notable settlements



Thick vegetation blankets the layered hills of the Character Area



Cowan Track in Lerderderg Park pic: Dey



Lerderderg Gorge pic: Alex Bikes

Figure 1 Forested Hills Overview

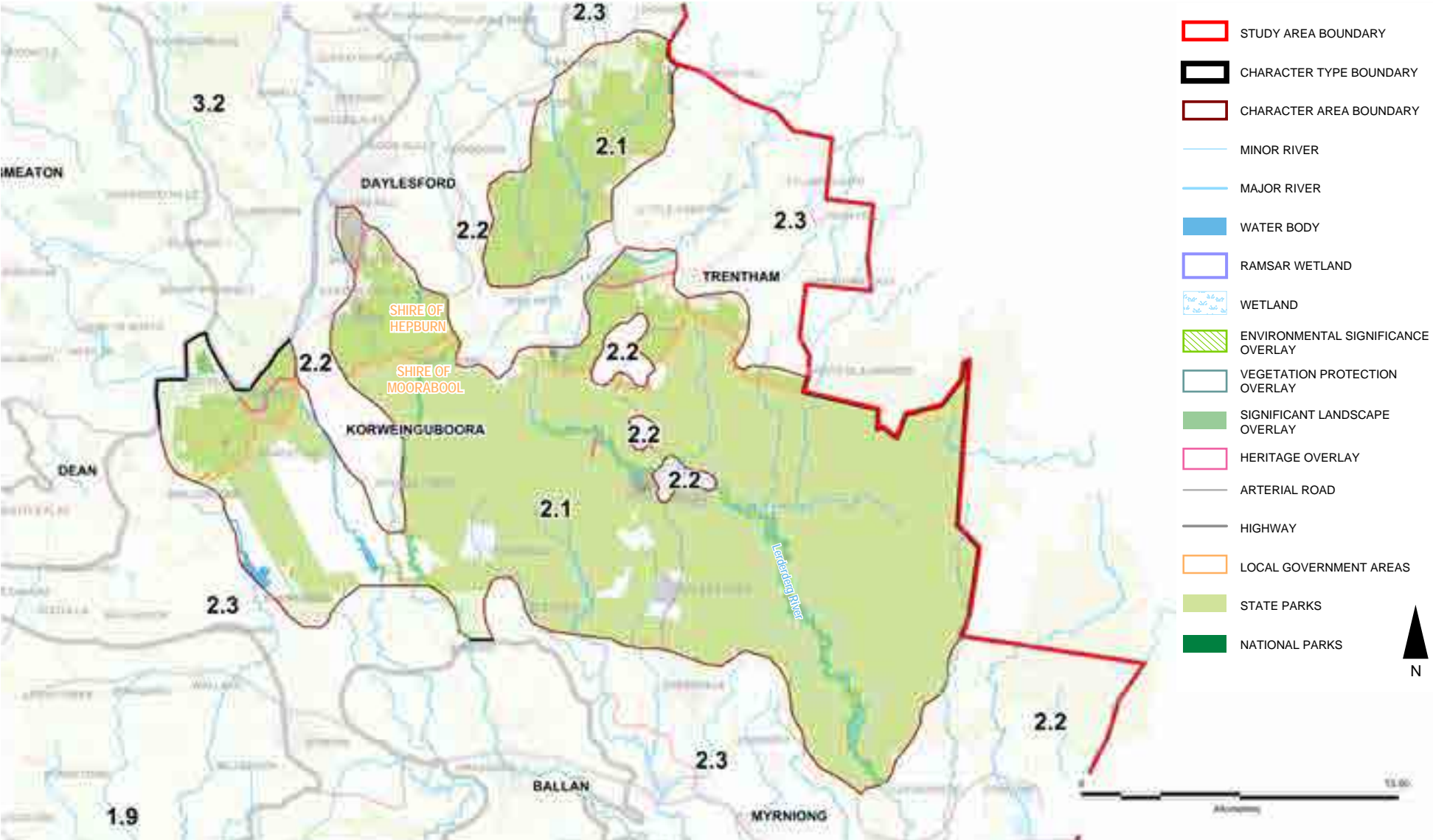


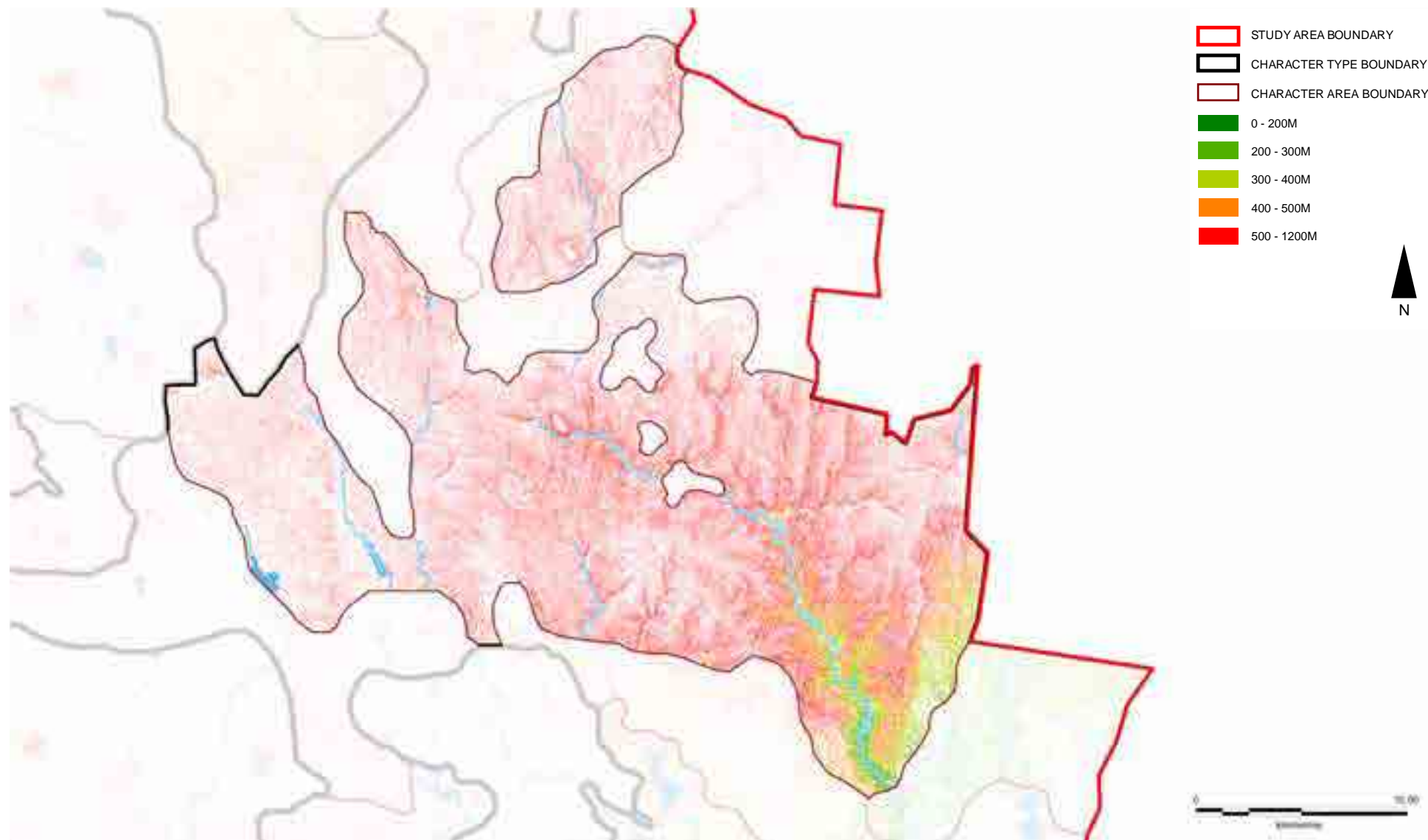
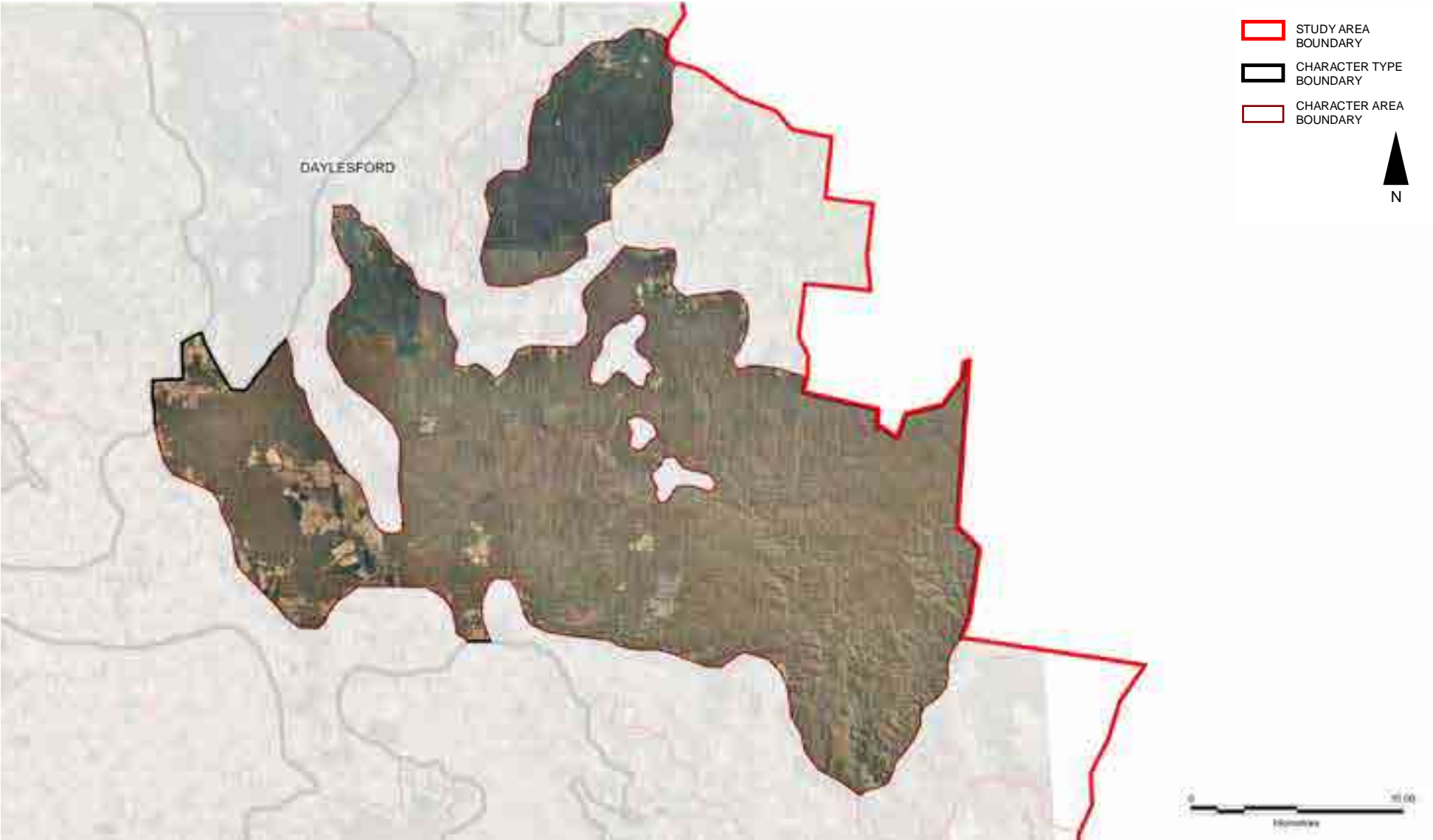
Figure 2 Forested Hills Landform

Figure 3 Forested Hills Aerial



PATTERN OF VIEWING

There are a number of viewing corridors which traverse this Character Area including:

- Greendale - Trentham Forest Road
- Spargo - Blakesville Road
- Spargo Creek Road
- Daylesford - Malmbury Road
- Ballan - Daylesford Road

Viewing corridors generally cut through clearings in the forest. At high points long ranging views over the Forest and Park are available, as the viewing corridor descends views become narrow, contained by thick vegetation.

In some locations, native roadside vegetation screens small plantations which sit within the confines of the forest.

Within Lerderderg State Park along O'Briens Road, at the north of the park, there are panoramic views of Lerderderg Gorge and Wombat State Forest to the north.

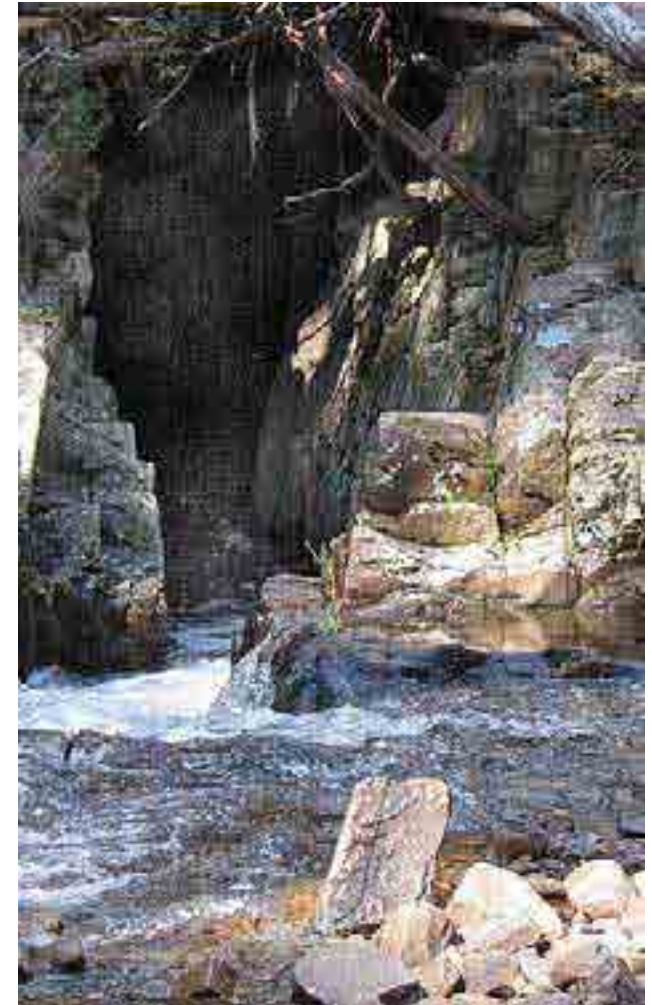
To truly appreciate the diversity and extent of this Character Area it is necessary to explore the area on foot. There are multiple walking tracks throughout the area including; the Mackenzies Flat - Grahams Dam, Blackwood Mineral Springs - Shaws Lake - Sweets Lookout, amongst many others.



View from Spargo Creek Road looking west, native roadside vegetation screens a small plantation



Narrow views contained by thick vegetation



Details within the Forest and Park, such as this miners tunnel, must be sought out on foot



Mount Blackwood Lookout

Looking south towards Bacchus Marsh over the Lerderderg State Park. The blanketed folds of the underlying geology contrast heavily with the cleared agricultural land beyond



View from within Lerderderg State Park from one of the 4x4 tracks which cut through the Park. Long ranging views towards adjacent Character Types and areas are available from high points.

LANDSCAPE VALUES

Historic

- Lerderderg State Park, listed by the National Trust as state significant because of its:
 - scenic riverine and gorge landscape
 - remains of structures and tunnels from early gold mining activity
 - geology (Ordovician rocks and overlying Permian glacial deposits and Tertiary basalt)
 - prospects for challenging walking
 - remoteness
- Jubilee Lake, Daylesford, on file with the National Trust
- Gold rush history of logging, the wood products were used as tunnel supports, sleepers for tramways, lining mining shafts etc.
- Wombat State Forest was almost completely deforested until a management plan was established in 1871
- Historical attractions including Andersons Mill, Balt Camp, Pioneer Sawmill and Yankee Mine
- Wheeler's Tramway, Wombat State Forest, archaeologically significant, built 1870s, protected by Moorabool HO53

Environmental/Scientific

- Mineral springs & groundwater, a natural, cultural & economic asset
- Lerderderg State Park
 - protected area on the IUCN list Category II (National Park)
 - protected by National Parks Act 1975, Schedule 2B

Social

- Wombat State Forest, a tourist destination
- Local community are involved in the state run management of the Wombat State Forest
- Tourism attractions including Lyonville Mineral Spring, Garden of St Erth, Lerderderg Heritage River Walk, Nolans Creek Picnic Area



Logging in the Wombat Forest www.porcupineridge.com

LANDSCAPE PROTECTION & MANAGEMENT

Planning Scheme Policies & Controls

This Character Area is subject to the Hepburn and Moorabool Planning Schemes.

Key Clauses

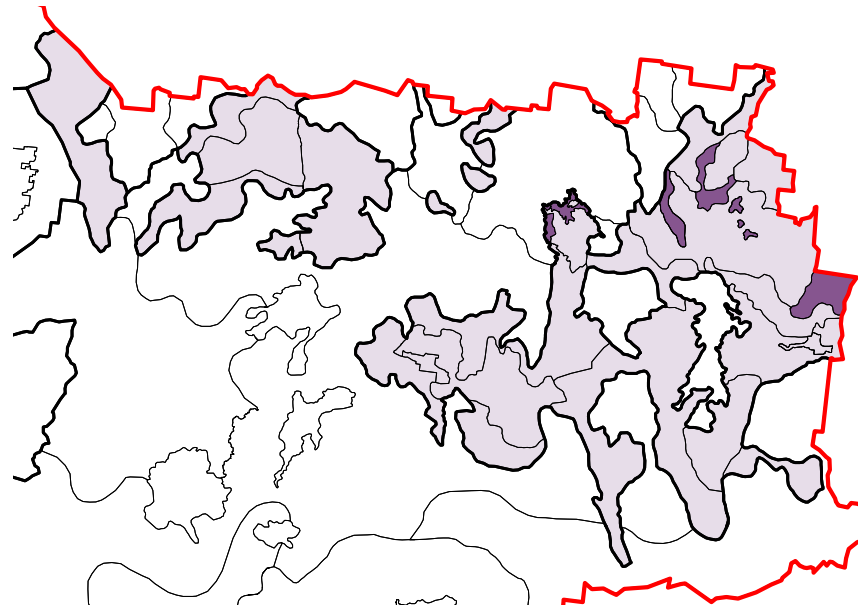
- Hepburn Clause 22.02 Mineral Springs Protection

Key Zones

- FZ
- PCRZ
- RLZ at Daylesford, Denver, Greendale, Lyonville, Wheatsheaf
- RCZ
- PUZ

Key Overlays

- Hepburn SLO1: Volcanic Peaks Landscape Area, Ridges & Escarpments Area & Sites of Geological Significance
- Hepburn ESO1: Proclaimed Catchment Protection
- Hepburn ESO2: Mineral Springs & Groundwater Protection
- Moorabool ESO1: Proclaimed Water Catchment Areas
- Moorabool ESO2: Waterway Protection
- Hepburn HO including:
 - HO724: Pump-house & Lyonville Mineral Springs, Lyonville Mineral Springs Reserve, Lyonville
 - HO980: Telegraph (Graves') Sawmill, Wombat State Forest
- Hepburn VPO1: Roadside Conservation & Remnant Vegetation
- Moorabool VPO1: Blackwood Township Environs



Character Area 2.2

Residential Forest Edges

2.2 RESIDENTIAL FOREST EDGES

Character Area 2.2 features a patchwork of residential enclaves set within a pastoral or forested locale. The edges of the Lerderderg State Park and the Wombat State Forest define this area.

Built form sits along road corridors or set back beside the forest edge and is typified by exotic planting around property boundaries. Rural residential properties are nestled in amongst bushland at the forest edges. Subdivisions become smaller adjacent to settlements.

Roadside verges are often weedy with a mixture of exotic and native vegetation.

Key Features

- Built form and forest interface
- Exotic vegetation
- Cleared paddocks with a forested backdrop

Settlements

- Creswick
- Dales Creek
- Barrys Reef
- Blackwood
- Glenlyon
- Leanards Hill
- Sailors Falls
- Trentham
- Tylden
- Wheatsheaf



Rows of letter boxes signal numerous dwellings set within the forest edges



Residential properties sit within cleared paddocks with a forested backdrop and patches of exotic vegetation



This Character Area has a long settled appearance, exotic vegetation, power infrastructure and built development are typical

Figure 1 Residential Forest Edges Overview

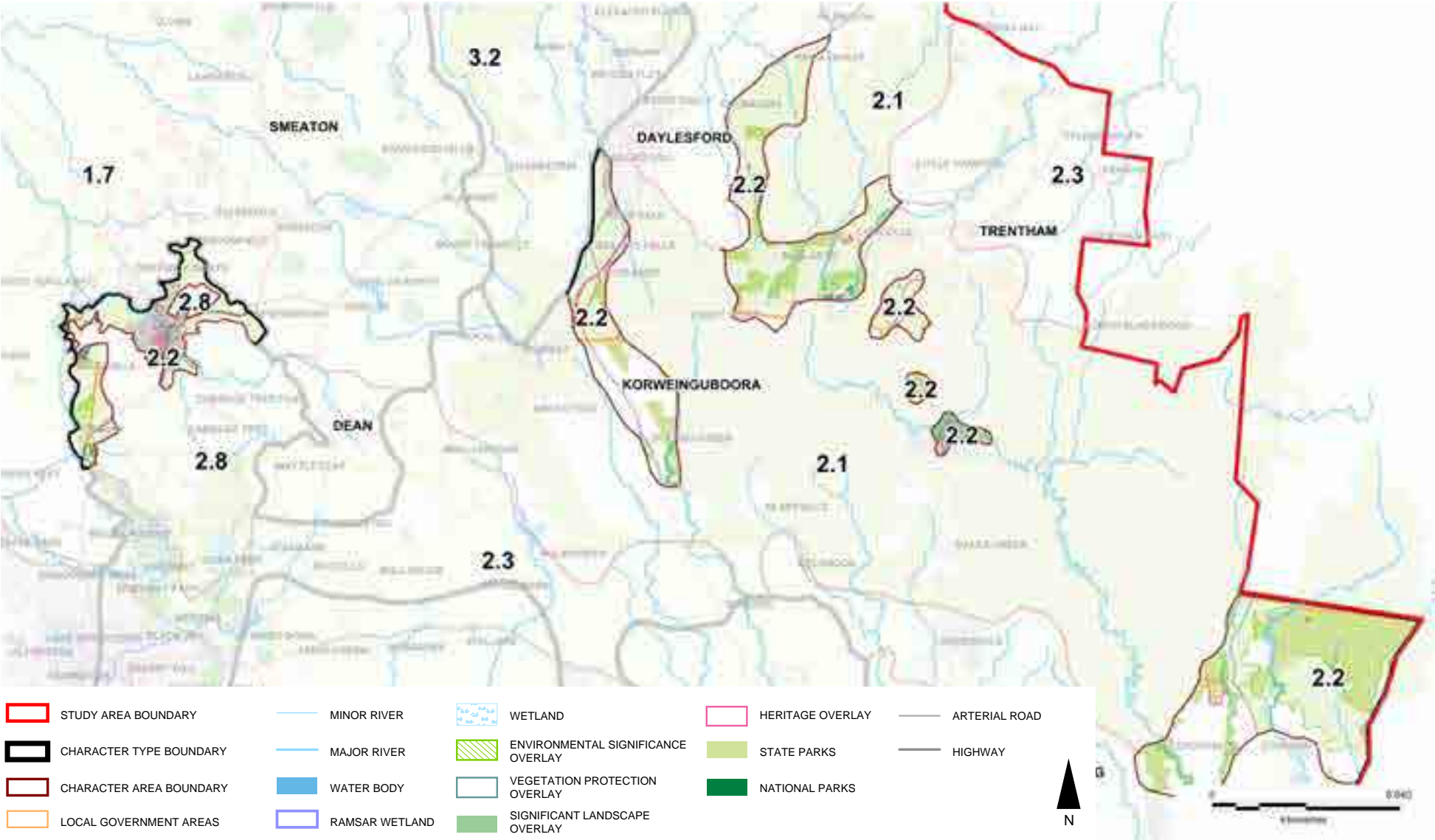


Figure 2 Residential Forest Edges Landform

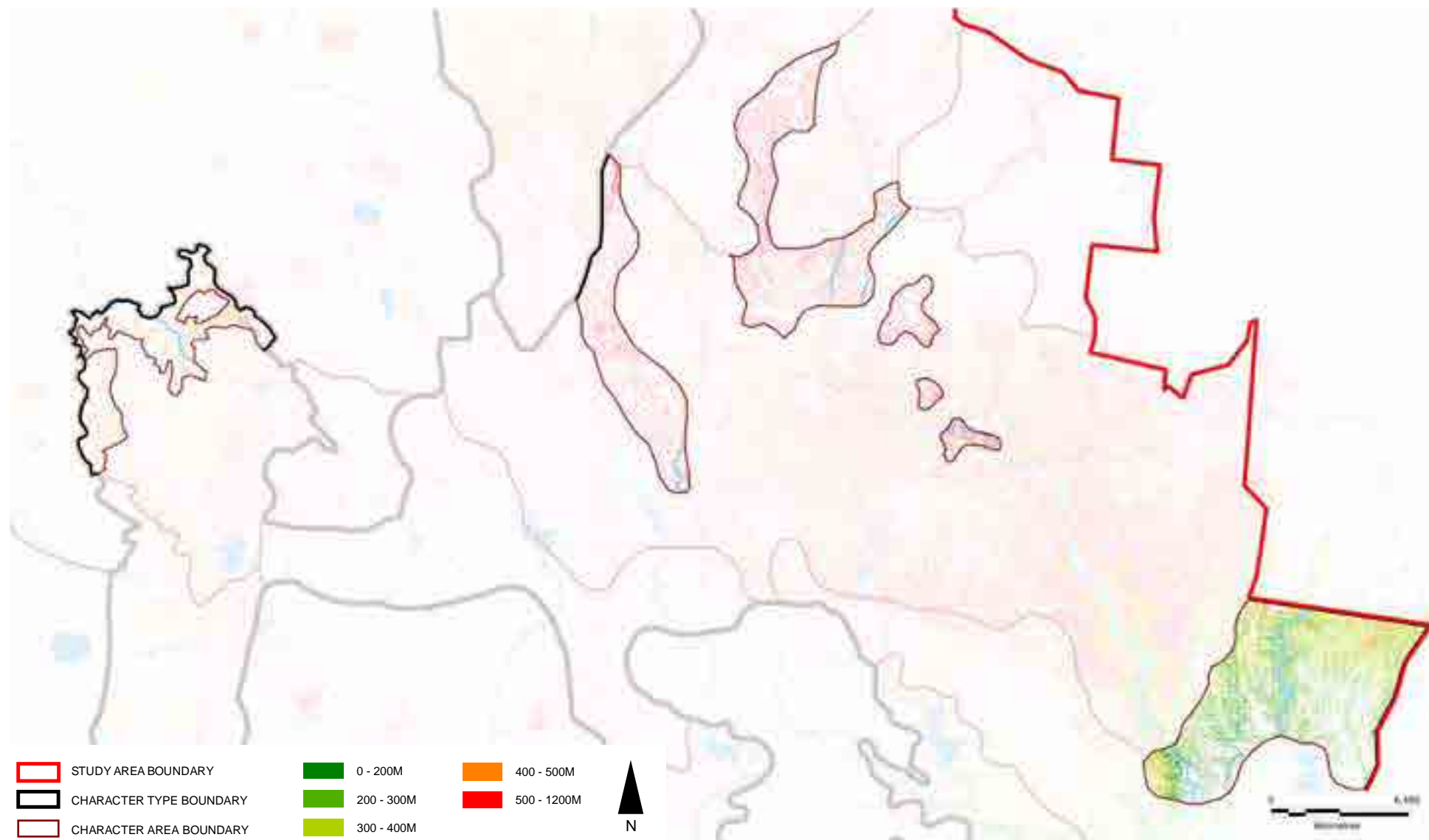
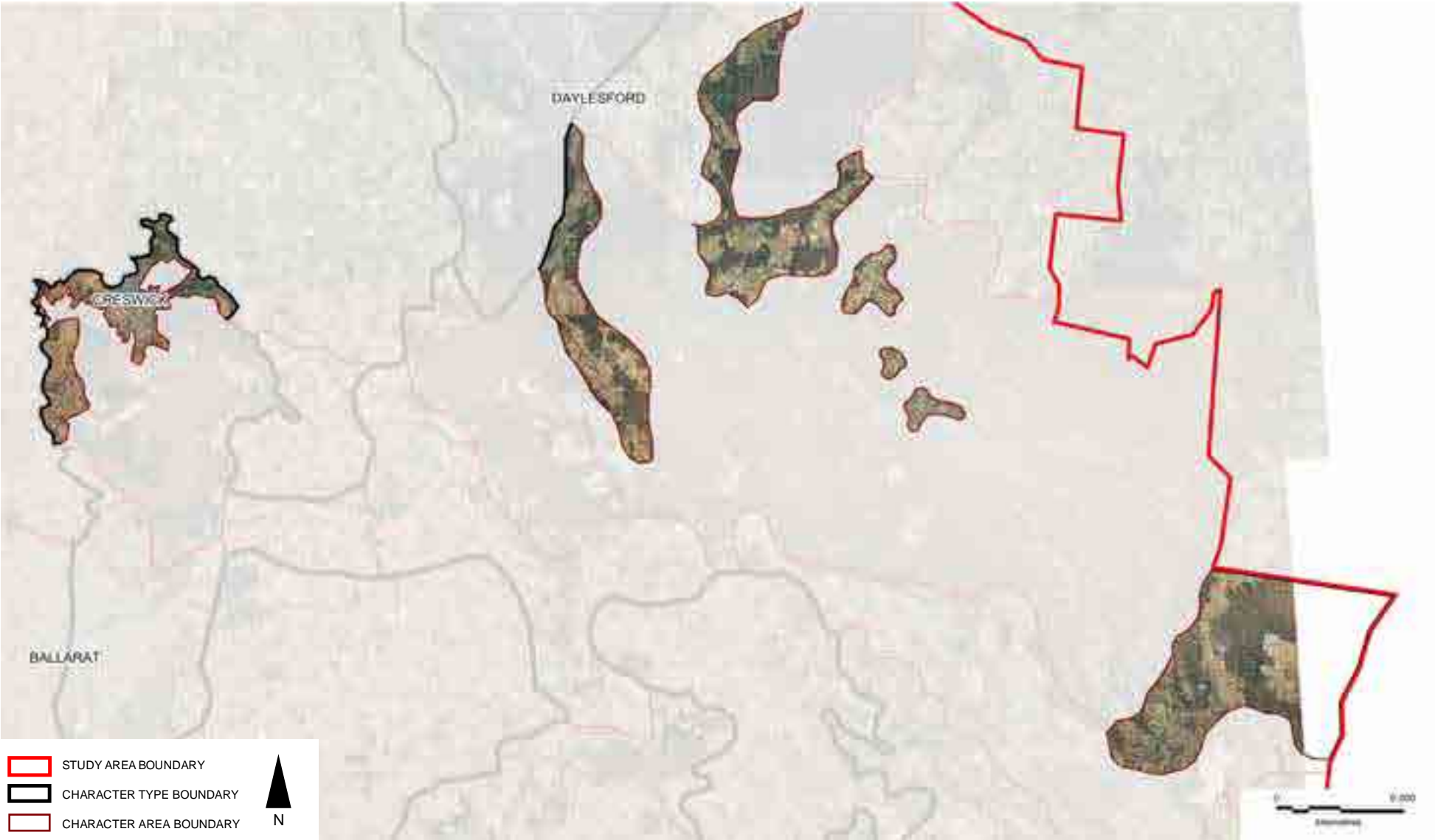


Figure 3 Residential Forest Edges Aerial



PATTERN OF VIEWING

The key viewing corridors in this Character Area include:

- Greendale - Trentham Forest Road
- Sparge - Blakeville Road
- Pearsons Road
- Trentham Road
- Chanters Lane
- James Lane

The viewing experience along these corridors varies from tunnelled in views surrounded by thick vegetation, to long range views over cleared paddocks.



Views over cleared paddocks with weedy roadside vegetation in the foreground



Thick vegetation creates tunnelled viewing corridors with occasional glimpses of cleared paddocks and forest edge



Roadside views over cleared paddocks to the forest beyond



Views from Chanters Ridge over cleared paddocks and agricultural buildings, views terminate in the forested backdrop of the Wombat State Forest

LANDSCAPE VALUES

Historic

- Lerderderg State Park, listed by the National Trust as state significant because of its:
 - scenic riverine and gorge landscape
 - remains of structures and tunnels from early gold mining activity
 - geology (Ordovician rocks and overlying Permian glacial deposits and Tertiary basalt)
 - prospects for challenging walking
 - remoteness
- Sailors Falls, protected by Hepburn HO611
- Gold mining sites, protected by Hepburn HO

Environmental/Scientific

- Mineral springs & groundwater, a natural, cultural & economic asset
- Lerderderg State Park
 - protected area on the IUCN list Category II (National Park)
 - protected by National Parks Act 1975, Schedule 2B

Social

- Earth Garden Magazine, published in Trentham

LANDSCAPE PROTECTION & MANAGEMENT

Planning Scheme Policies & Controls

This Character Area is subject to the Hepburn and Moorabool Planning Schemes.

Key Clauses

- Hepburn Clause 22.02 Mineral Springs Protection

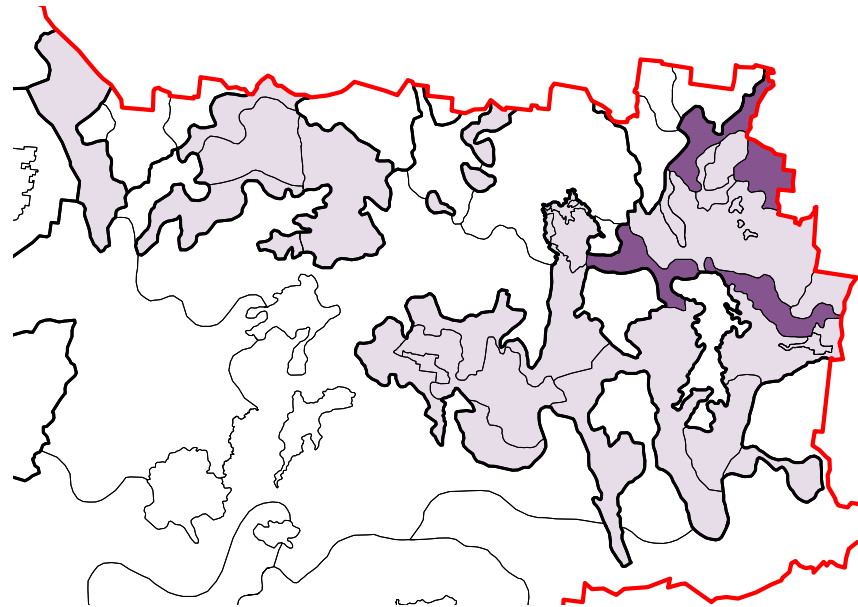
Key Zones

- FZ
- PCRZ
- RLZ at Bald Hills, Bullarto, Coimadai, Coomoora / Wheatsheaf, Creswick, Daylesford, Lyonville, Springmount, Sulky
- RCZ
- PUZ1
- Moorabool SUZ2: Earth & Energy Resources Industry

Key Overlays

- Hepburn ESO1: Proclaimed Catchment Protection
- Hepburn ESO2: Mineral Springs & Groundwater Protection
- Moorabool ESO1: Proclaimed Water Catchment Areas
- Moorabool ESO2: Waterway Protection
- Moorabool ESO3: Long Forest and Werribee Gorge
- Hepburn HO including:
 - HO210 & HO983: Calambeen Park, Creswick
 - HO611: Sailors Falls, Daylesford- Ballan Road, Sailors Falls
 - HO616: Leitches Creek Spring Reserve
 - HO938: Creswick Deep Leads 1 Mine Site
 - HO946: Crown Mine Site
 - HO954: Creswick Deep Leads No. 9 Mine Site

- HO955: Bone & Party Mine Site
- Hepburn VPO1: Roadside Conservation & Remnant Vegetation
- Moorabool VPO1: Blackwood Township Environs
- Hepburn DPO3: Creswick Golf Course Development Plan
- Hepburn RO2: Sailors Falls Estate, Telegraph



Character Area 2.3

Cleared Pastures

2.3 CLEARED PASTURES

This Character Area consists of a network of cleared rolling hills and undulating pastures, lined with exotic shelterbelts.

Smaller subdivisions occur close to settlements with properties sitting alongside viewing corridors.

Patches of exotic vegetation appear around property boundaries and along roadsides.

Key Features

- Cleared pastoral landscape divided by exotic and native shelterbelts
- Rolling topography
- Some cropping
- Stands of native vegetation, particularly along creek lines

Settlements

- Bacchus Marsh (part)
- Daylesford (part)
- Trentham
- Greendale
- Myrniong



Looking south towards Mount Warrenheip over cleared paddocks and exotic vegetation



Looking south over part of this Character Area from Mount Franklin



Rolling agricultural plains are slashed by exotic shelterbelts to the north of Myrniong

Figure 1 Cleared Pastures Overview

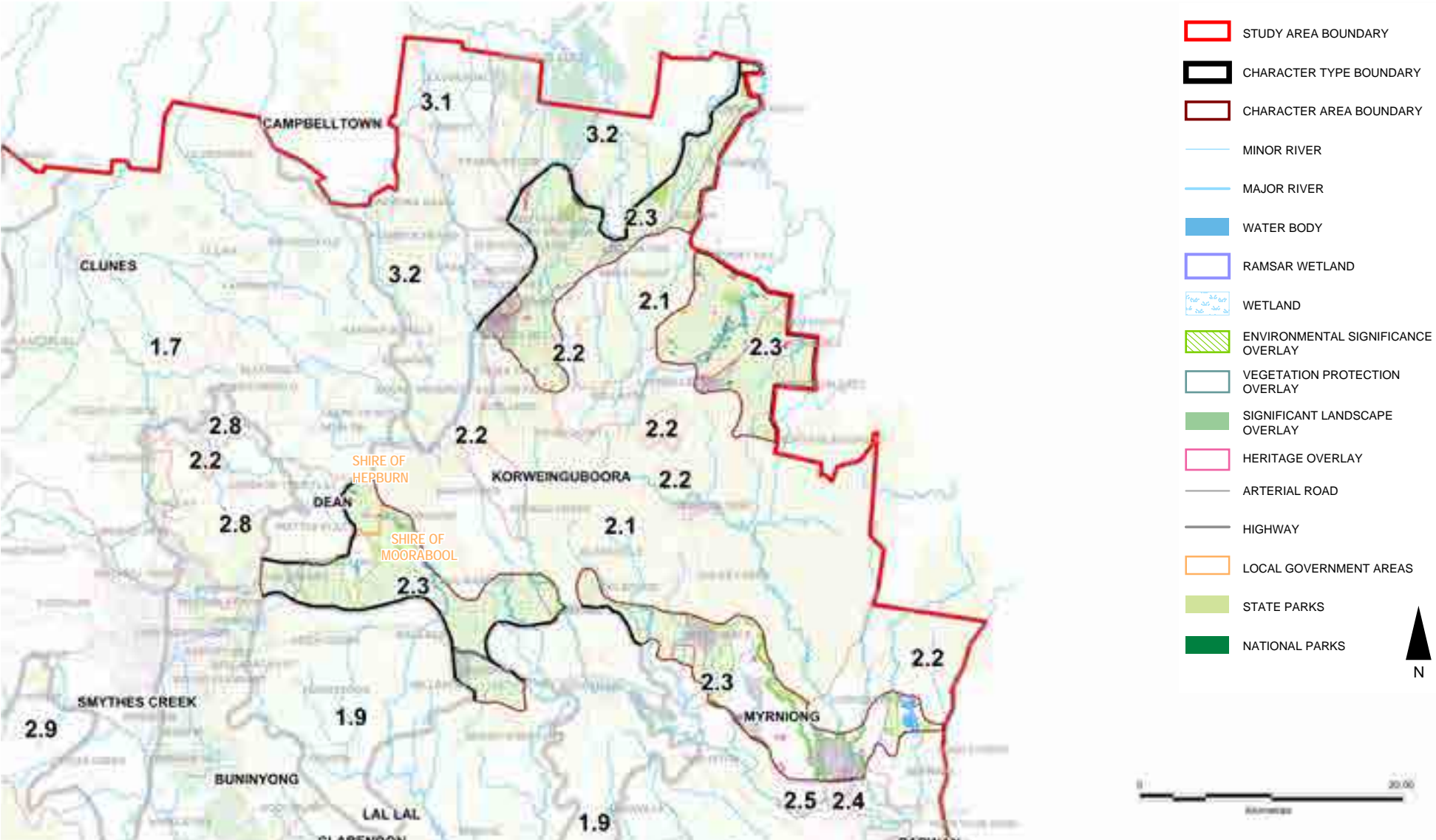


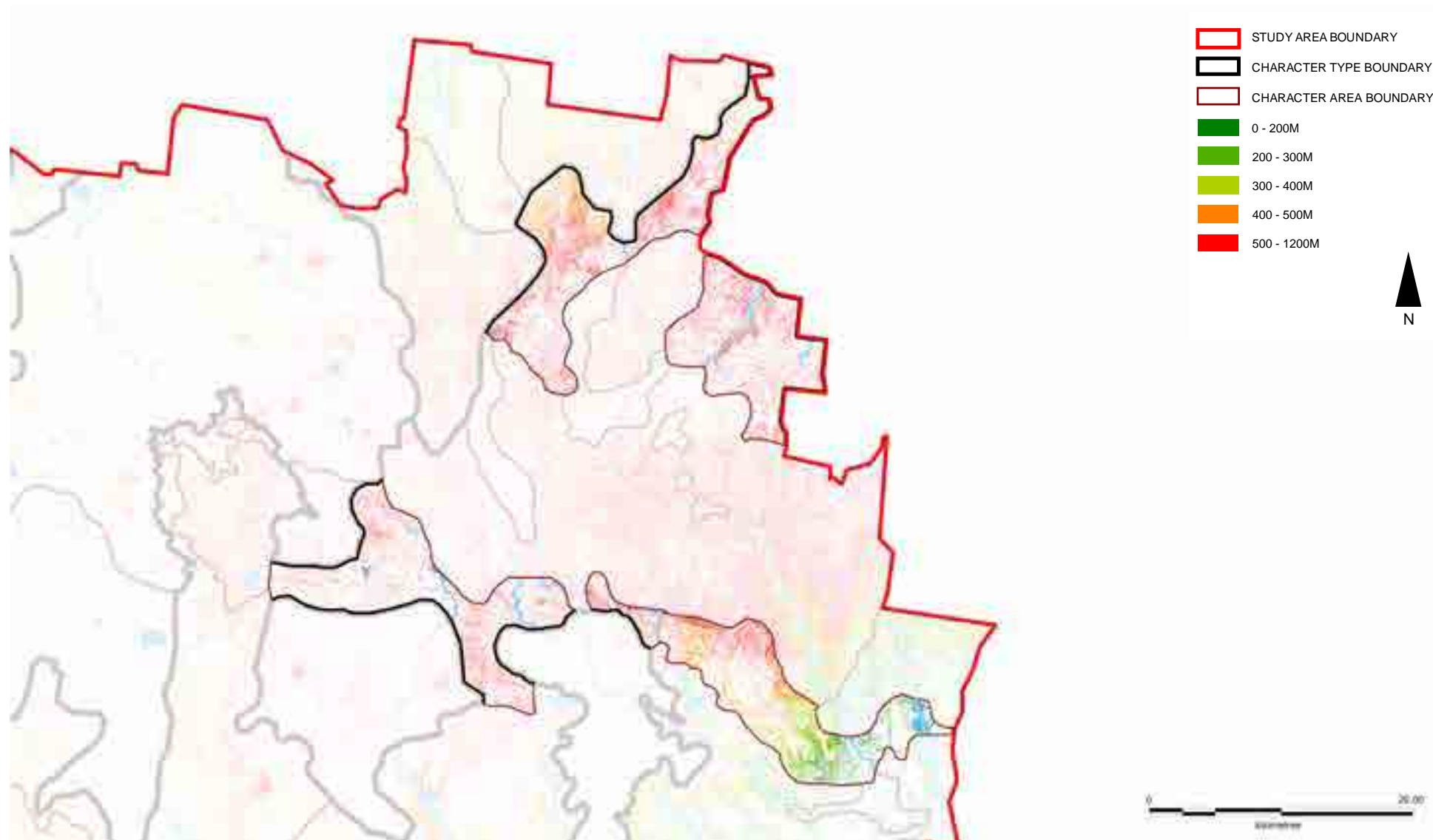
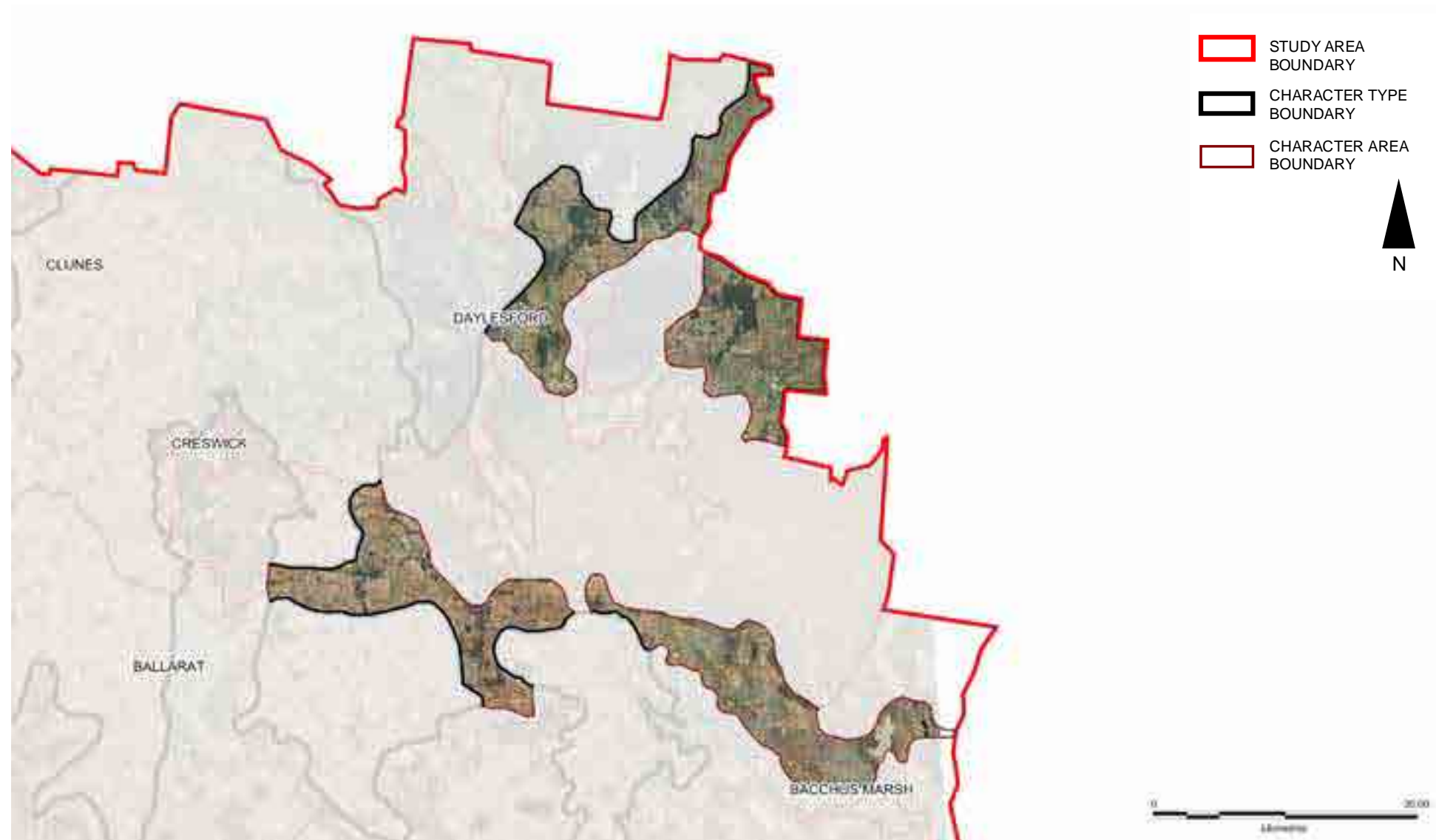
Figure 2 Cleared Pastures Landform

Figure 3 Cleared Pastures Aerial



PATTERN OF VIEWING

The key viewing corridors in this Character Area include:

- Western Fwy
- Daylesford - Malmsbury Rd
- Kyneton - Trentham Rd

While the viewing corridors listed above transect parts of Character Area 2.3, the majority of this area is dissected by minor roads which are often local rural access roads.

The northern part of Character Area 2.3 allows views over the cleared pastures to the thickly forested backdrop of the Wombat State Forest and Lerderderg State Park. The dark green rise of Mount Franklin is often visible on the horizon.

Within the southern part of the Character Area long views are available over the undulating cleared land, volcanic features sometimes appear in the distance.

Views across the northern extents of the Character Area can be gained from Mount Franklin.



Looking west along Springbank Road, properties sit adjacent to viewing corridor surrounded by exotic vegetation.



Roadside vegetation screens views on the Western Freeway



Looking east on the C317 east of Tylden, long views are available over the cleared rolling landscape.



Looking north east from Mount Warrenheip over the cleared pastoral landscape, divided by exotic shelterbelts.



Looking south from Mount Franklin over the cleared pastoral landscape. The dark green mass of Wombat State Forest to the south creates a stark textural contrast.

LANDSCAPE VALUES

Historic

- State significant Lerderderg State Park, adjacent to & partially within the Character Area, listed by the National Trust

Environmental/Scientific

- Hilltops & ridge lines encircling the township of Bacchus Marsh, protected by Moorabool SLO1
- River Red Gums, the oldest living natural heritage of Bacchus Marsh, striking feature of the Bacchus Marsh Valley, valuable source of food & habitats, protected by Moorabool ESO8
- Mineral springs & groundwater, a natural, cultural & economic asset
- Koalas, habitats protected by Ballarat ESO5
- Lerderderg State Park
 - protected area on the IUCN list Category II (National Park)
 - protected by National Parks Act 1975, Schedule 2B
- Protected areas on the IUCN list
 - Burke Streamside Reserve, Category III (Natural Monument or Feature)
 - Denver, Drummond I89, Dry Diggings, Holcombe I85, Leitch Creek & Middleton Hill Bushland Reserves & Dry Diggings Natural Features Reserve, Category IV (Habitat/Species Management Area)

LANDSCAPE PROTECTION & MANAGEMENT

Planning Scheme Policies & Controls

This Character Area is subject to the Hepburn and Moorabool Planning Schemes.

Key Clauses

- Hepburn Clause 22.02 Mineral Springs Protection

Key Zones

- FZ
- RCRZ
- RLZ at Bullarto, Coimadai, Coomoora, Denver, Drummond, Glenlyon, Gordon, Greendale, Lyonville, Myrnion, Porcupine Ridge, Trentham, Wheatsheaf

Key Overlays

- Moorabool SLO1: Scenic Hilltops & Ridge Line Areas
- Hepburn ESO1: Proclaimed Catchment Protection
- Hepburn ESO2: Mineral Springs & Groundwater Protection
- Moorabool ESO1: Proclaimed Water Catchment Areas
- Moorabool ESO2: Waterway Protection
- Moorabool ESO3: Long Forest & Werribee Gorge
- Moorabool ESO8: River Red Gums in the Bacchus Marsh Valley
- Hepburn VPO1: Roadside Conservation & Remnant Vegetation
- WMO / BMO
- Hepburn LSIO
- Moorabool DDO1: Bences Road Area
- Moorabool DDO2: Visual Amenity & Building Design
- Moorabool DDO3: National Route 8 (Western Freeway / Highway) Environs
- Hepburn RO1: North Drummond
- Moorabool PAO4: Goldfields Superpipe Project - header tank

