

1.8 LAKE KEILAMBETE

Significant Viewing Locations

Character Type	1	The Western Volcanic Plain
Character Areas visible in view	1.9	Southern Lakes & Cones

Lake Keilambete is an almost circular lake with startling blue waters that provides a stunning foreground for Mount Noorat on the horizon. A small interpretive sign denotes this significant viewing location.

This is a short range view, that is predominantly contained within the crater of the lake. The extents of the view is described in the view cone on the map opposite. Views to the west and south/west are actually blocked by shelterbelt planting on site.

Overall View Significance Rating: Regional

A detailed significance assessment is provided over the following pages.



The view contained by the sloping walls of the crater



Mount Noorat centred in the view on the horizon

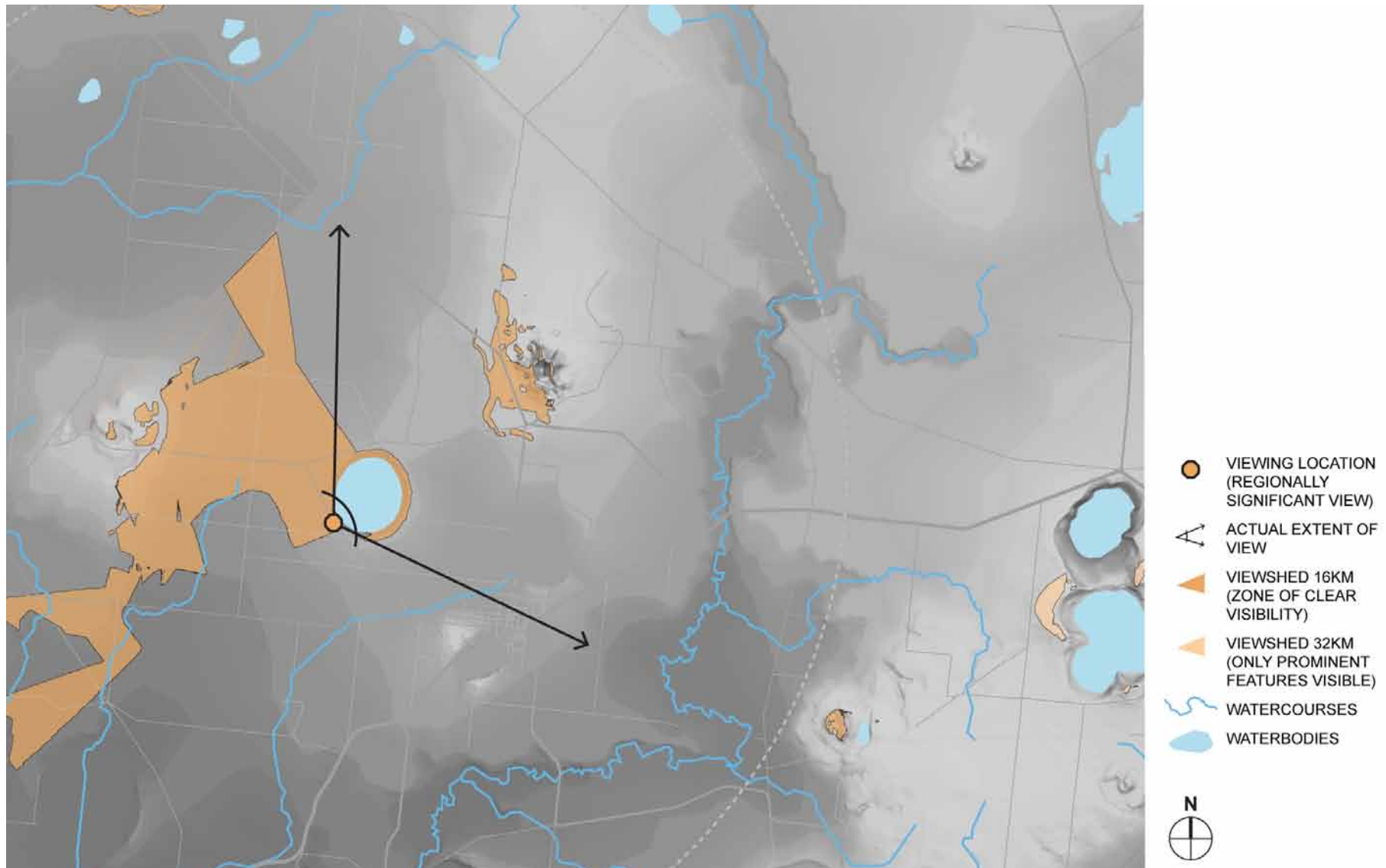


Striking blue water



Scoria mining on the tuff ring

Viewshed Map: Lake Keilambete



Aesthetic Values

AESTHETIC VALUES				
	Source	Description	Aesthetic Values Rating Considerations (i.e. exemplary, iconic, scarce)	Level of Significance
COMPOSITION (STRUCTURE)	Survey	Lake Keilambete is not immediately discernible to the eye, as it nestles in a deep crater. Where Keilambete Road edges the lake, views are predominantly blocked by dense roadside vegetation. A break in the vegetation on the south western edge opens up to reveal the sparkling blue water of the lake. From this point cleared, grassy banks slope down to the water's edge and the almost perfectly circular formation of the lake is visible. The view is contained within this deep recession, with the raised sides (or 'tuff' ring) blocking outward views. Mount Noorat is centred in the view on the horizon.	There are a number of spectacular marrs (volcanic lakes) on the western plains, however it is rare that the almost perfectly circular formation is as evident to the viewer at ground level as it is in this location.	High (Regional)
COMPOSITION (VISUAL QUALITIES)	Survey	<p>The stunning, deep blue-green colouration of the water of the lake is one of the most striking features of this view. The blue colour seems to glow from within the waters of the lake, unlike some of the broader and shallower lakes in the region that tend to reflect the colours of the sky. The straw coloured pastures that edge the lake provide a high level of contrast that exacerbates this colouration.</p> <p>The perfectly circular formation of the lake and the presence of Mount Noorat in the centre of the lake on the horizon give this view a remarkable balance. Scoria mining on the tuff ring has scarred the south eastern edge of the marr.</p>	There is an exemplary balance in the components of this view. The vivid color of the water in the lake is rare.	High (Regional)
OVERALL AESTHETIC SIGNIFICANCE RATING				Regional

Other Cultural Landscape Values

OTHER VALUES		
	Source	Description
SOCIAL VALUE	Desktop Research	Alan Marshall told stories of learning to swim in Lake Keilambete in his 1955 novel "I Can Jump Puddles."
	Interpretive signage (survey)	This viewing location is included in the Alan Marshall Discovery Trail. The waters of the lake have a high mineral content and are believed to have healing qualities.
	Survey	Improved directional signage and interpretive information could enhance the visitor experience.
ENVIRONMENTAL VALUE	Survey	The viewpoint allows appreciation and understanding of this exemplary volcanic landscape and its social history.
CULTURAL VALUES SIGNIFICANCE RATING		Regional

1.9 BERRY DEEP LEAD GOLD MINE VIEWS

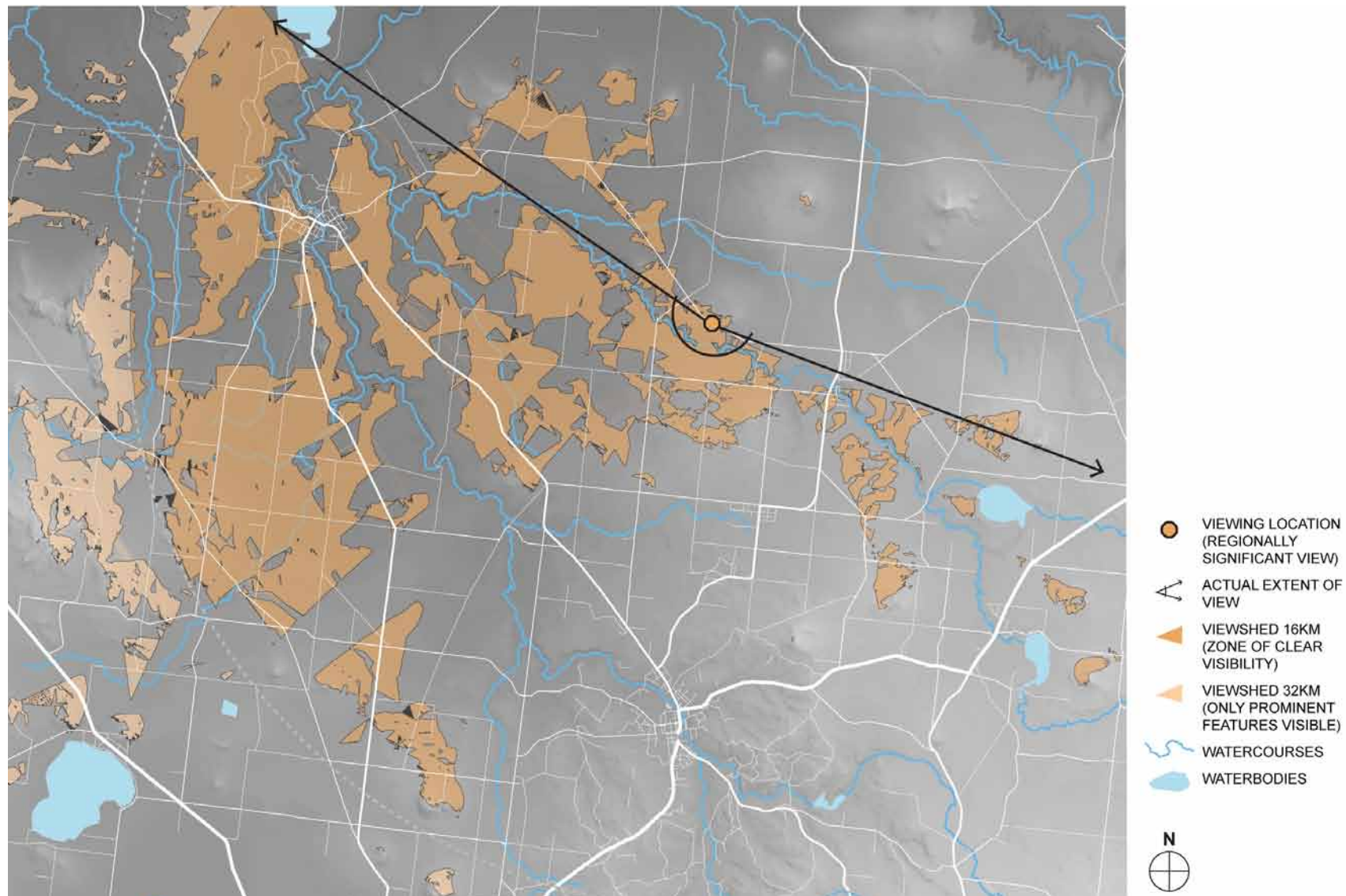
Significant Viewing Location

Character Type	3	Western Volcanic Plains
Character Areas visible in view	1.7	Cones & Mines
	2.12	Island Uplands

Two locations allow views across to the Berry Deep Lead Mine sites that hold much historical significance from the Victorian Gold Mining era, as well as providing visual detail and interest in the landscape. The presence of numerous volcanic rises contributes to the aesthetic appeal of this landscape.

Overall View Significance Rating: Regional





Aesthetic Values

AESTHETIC VALUES				
	Source	Description	Aesthetic Values Rating Considerations (i.e. exemplary, iconic, scarce)	Level of Significance
COMPOSITION (STRUCTURE)	Survey	<p>There are two components to this viewing location. The first is the roadside view of the Berry Deep Lead No1 Mine on the Daylesford - Clunes Road just west of Smeaton. This is a short range view, with cleared paddocks allowing for direct views towards the huge mullock heaps of the mine. The remains of the pump house nestled among the mullock heaps is an important part of the view that provides an attractive and historic focal point.</p> <p>The second view is available a little further east along the Daylesford - Clunes Road, where the landscape opens up to reveal pastoral land punctuated with volcanic cones and remnant mullock heaps from a number of different mine sites. The eye is carried across the landscape, towards individual features, and an interpretive board is in place to assist in locating these within the landscape.</p>	A combination of volcanic and gold mining history can be viewed simultaneously from these locations, which has created an exemplary historic viewshed.	High (Regional)
COMPOSITION (VISUAL QUALITIES)	Survey	<p>The mullock heaps stand out as large, pale obtrusions that contrast with the gold and green of the surrounding paddocks. Close up views at the Berry No1 site reveal the rough, weathered texture of the heaps. That they have retained their integrity after a century or more of exposure to the elements is a fascinating aspect of this view. The piles display banded colours, predominantly shades of yellow, grey and white that reflect the layers of granite and earth extracted from below. The old pump house remains are a picturesque and sculptural element that reveals the character of gold mining architecture and gives the view historical context. This is particularly relevant to the newcomer to the region who may not understand the background of the strange heaps scattered across this landscape.</p> <p>The second site to the east also has significance due to the history of gold mining written on the landscape. As the interpretive board stipulates, this scene viewed during the 1800s would have been alive with gold mining activity. Now the remaining mullock heaps stand in remembrance of this era.</p>	The mullock heaps are an iconic feature that is associated with this region of Victoria. Their presence alongside the numerous volcanic cones is unique to this area. These viewing locations provide excellent opportunities to absorb these details in the landscape.	High (Regional)
Overall Aesthetic Significance Rating				Regional

Other Cultural Landscape Values

OTHER VALUES		
	Source	Description
SOCIAL VALUE	Tourist information	The mullock heaps are an attraction promoted through Goldfields Touring pamphlets.
	Survey	Interpretive information assists in the appreciation of the rich heritage of this landscape.
CULTURAL VALUES SIGNIFICANCE RATING		Regional

1.10 MOUNT BUNINYONG & MOUNT WARRENHEIP

Significant Viewing Locations

Character Type	1	The Western Volcanic Plain
	2	The Uplands
Character Areas visible in view	1.9	Vegetated Volcanic Plain
	2.9	Rural Living

Mount Buninyong and Mount Warrenheip are located to the east of Ballarat and offer spectacular viewing locations of the agricultural landscape and volcanic plains surrounding Ballarat.

Roads wind up both of the rises so views are potentially available from numerous angles. The viewshed map opposite describes how much of the surrounding landscape is visible due to the height of the volcanic rises and the relief of the surrounding terrain. The view cones describes what can actually be seen taking into account vegetation, which frames many views from the hills as seen in the photos to the right.

Overall View Significance Rating: Regional

A detailed significance assessment is provided over the following pages.



View from Mount Warrenheip

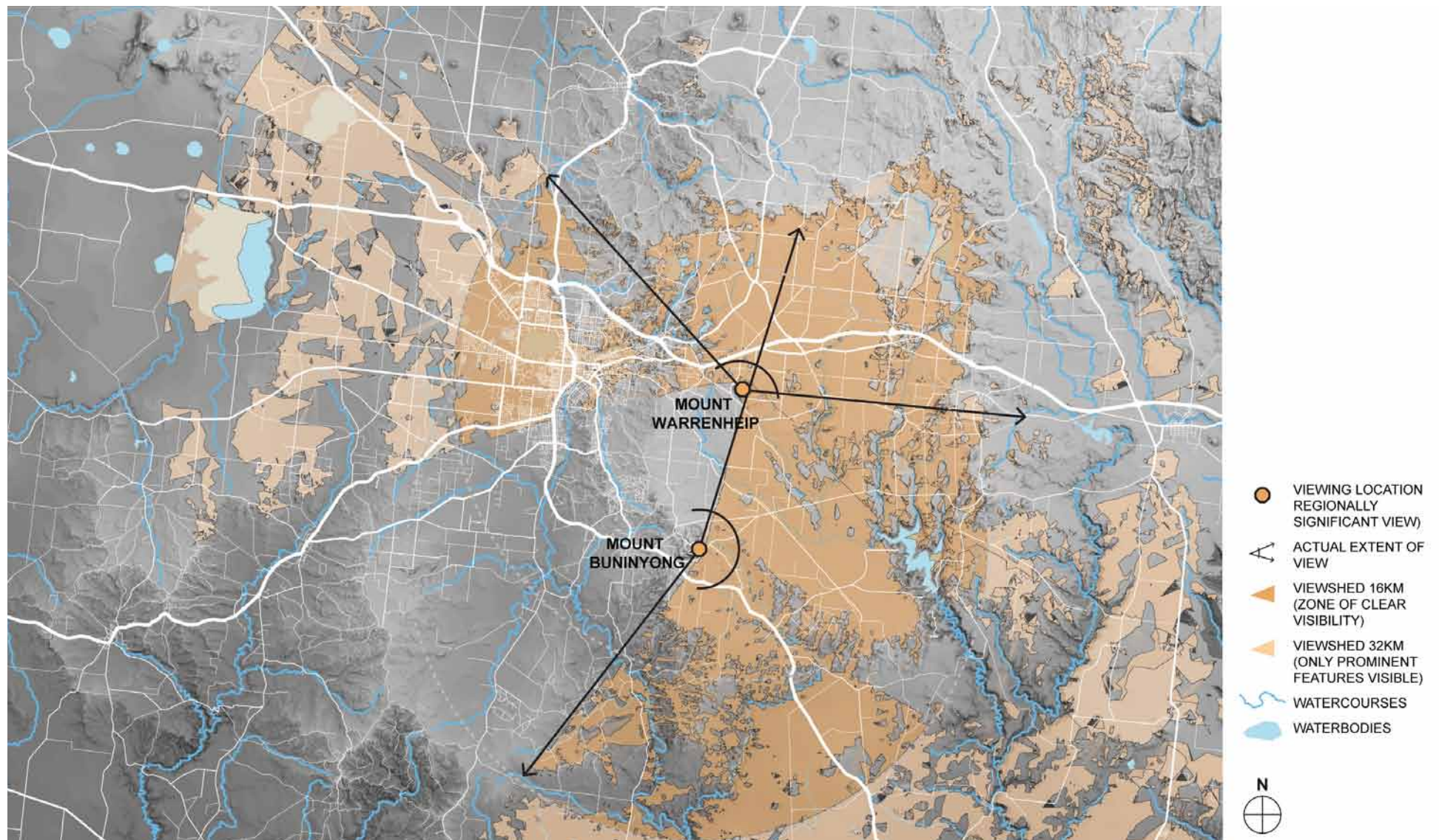


View from Mount Buninyong



View from Mount Buninyong towards Warrenheip

Viewshed Map: Mount Buninyong & Mount Warrenheip



Aesthetic Values

AESTHETIC VALUES				
	Source	Description	Aesthetic Values Rating Considerations (i.e. exemplary, iconic, scarce)	Level of Significance
COMPOSITION (STRUCTURE)	Survey	<p>Panoramic views are available from the edges of the roads that wind up both Mount Buninyong and Mount Warrenheip. Dense vegetation on these volcanic rises frames the views, which look out over the agricultural landscape of the volcanic plains.</p> <p>Cleared paddocks separated by shelterbelts, broad dams, farm houses and buildings, and dense patches of remnant vegetation, particularly along creek lines, are all visible from these locations.</p> <p>In the distance, the agricultural landscape is punctuated by a number of volcanic rises, creating visual interest and contrast within the viewing area.</p>	This is an exemplary view of the Ballarat and Buninyong regions, and the western volcanic plain beyond.	High (Regional)
COMPOSITION (VISUAL QUALITIES)	Survey	<p>These views are open, expansive and varied, displaying the rich colours and textures of the agricultural patchwork that disappears into a distant horizon. The characteristic 'big skies' of western Victoria create a spectacular frame for the features of the surrounding landscape, and change distinctly in colour and mood with variations in the changeable weather and light.</p> <p>The layers of history of the surrounding landscape are expressed in these views, from the volcanic activity that formed the landscape, to the agricultural activity that dominates it today.</p> <p>The spectacular views of Mount Buninyong and Mount Warrenheip are frequent sources of inspiration for artists and photographers.</p>	The richness of colours, textures and contrasts within these views are exemplary within the region. These two locations offer unique views of this expansive, dramatic landscape.	High (Regional)
OVERALL AESTHETIC SIGNIFICANCE RATING				Regional

Other Cultural Landscape Values

OTHER VALUES		
	Source	Description
SOCIAL VALUE	Desktop Research	Mount Buninyong and Warrenheip and their lookout points are visitor attractions in the local area. The panoramic views afforded are a source of inspiration for artists and photographers.
CULTURAL VALUES SIGNIFICANCE RATING		Regional



Mount Buninyong by Andrew Thomas

2.1 MOUNT BLACKWOOD

Significant Viewing Location

Character Type	2	The Uplands
	2.1	Uplands Forested Areas
	2.3	Rolling Pastures
	2.5	Plateaus & Gorges
	1.9	Vegetated Volcanic Plain
	1.11	Winchelsea Western Plain

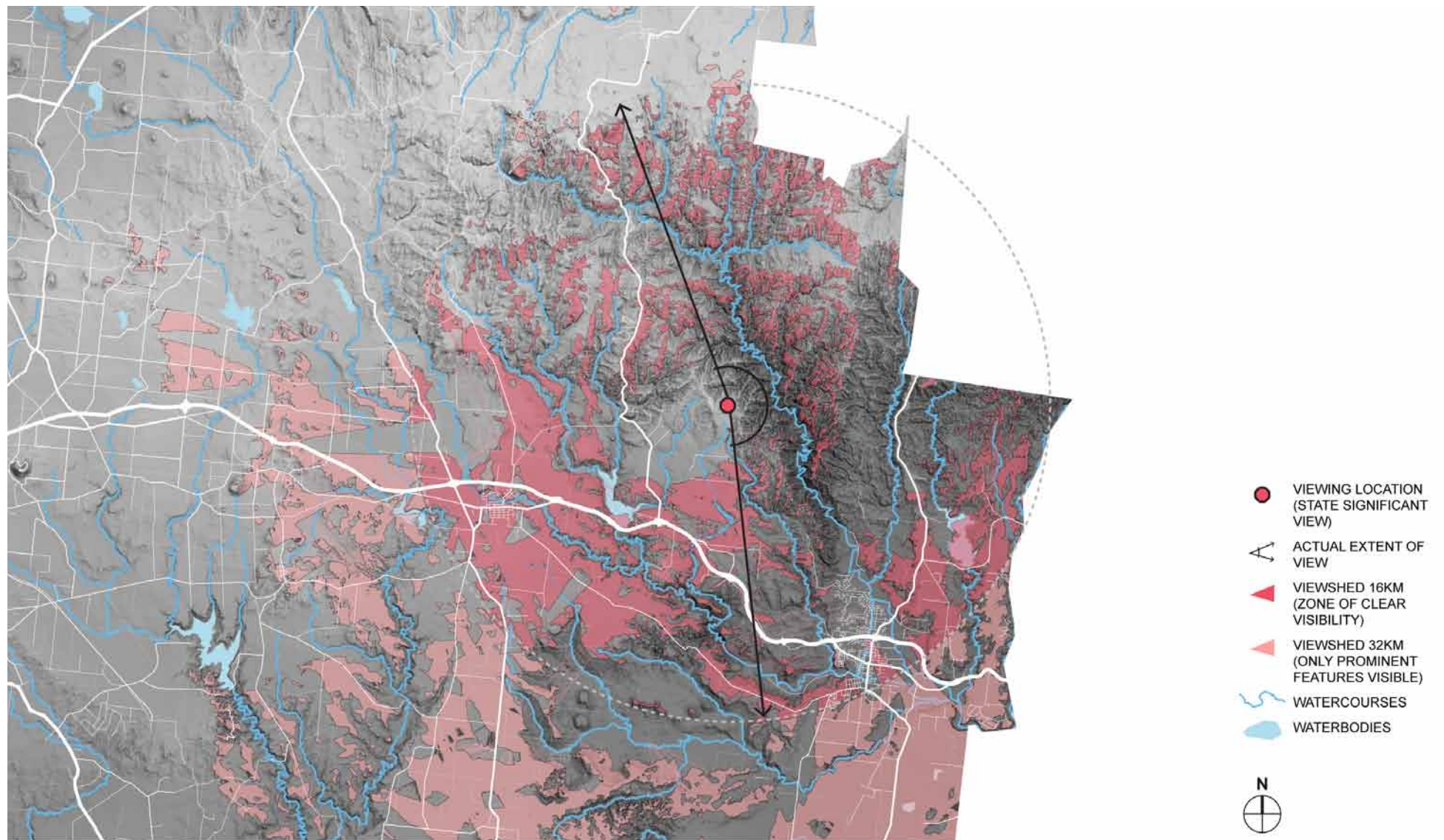
Character Areas visible in view	2	The Uplands
	2.1	Uplands Forested Areas
	2.3	Rolling Pastures
	2.5	Plateaus & Gorges
	1.9	Vegetated Volcanic Plain
	1.11	Winchelsea Western Plain

Mount Blackwood is a peak on the ranges at the edge of the Lerderderg State Park, with excellent views across the park and the volcanic plain to the south. There is no formal viewing infrastructure in this location, however there are access roads for telecommunications towers that provide public access to the views. The viewshed extends over the eastern edge of the study area, and the view cone describes the view which is predominantly visible to the east.

Overall View Significance Rating: State

A detailed significance assessment is provided over the following pages.





Aesthetic Values

AESTHETIC VALUES				
	Source	Description	Aesthetic Values Rating Considerations (i.e. exemplary, iconic, scarce)	Level of Significance
COMPOSITION (STRUCTURE)	Survey	A broad, panoramic view is available from the peak of Mount Blackwood. The foreground of the view features cleared land used for hobby farming, with occasional trees that frame views. The middle ground is the most interesting and varied part of this view. It is dominated by the layered green hills of the Lerderderg State Park to the north and a patchwork of pastures that are occasionally incised by deep gorges to the south. In the far distance the hills of the Macedon Ranges can be seen.	This is an exemplary view of the ridges and valleys of the Lerderderg State Park, and the landscape of plateaus and deep gorges to the south.	Exceptional (State or higher)
COMPOSITION (VISUAL QUALITIES)	Survey	This is a high and windswept location, where the sharply defined ridges and deep valleys of the Lerderderg Gorge and surrounding ranges are clearly visible from above. There is a strong contrast between the forested areas of the State Park and the cleared, open pastoral land to the south. Here, properties and paddocks are divided by rows of shelterbelts and other clumps of vegetation. The Merrimu Reservoir glints within the landscape, and highlights the presence of the steep-sided gorges that are a dominant character of the landscapes to the south. The Macedon Ranges appear as a dark, mounded band on the horizon, while to the south, occasional rises of volcanic origin can be seen. Overall, this view encapsulates the interface of the uplands and the volcanic plains, and is composed of a great diversity of features that are associated with both of these landscapes. The history of human intervention is evident through the contrast between the clearing that has occurred for agriculture, and the conservation of the forest.	This breathtaking view is rich in colour, textures and contrasts of close and distant landscape elements. The view encapsulates a number of highly significant aspects of the different landscapes of the region and this, together with its compositional qualities, makes a scarce and iconic view within the State.	Exceptional (State or higher)
Overall Aesthetic Significance Rating				State (or higher)

Other Cultural Landscape Values

OTHER VALUES		
	Source	Description
SOCIAL VALUE	Desktop Research	Information about the viewing opportunity at Mount Blackwood is available, despite it not being a formal lookout, and it is one of the visitor attractions of the local area.
	Survey	Formalisation of Mount Blackwood as a viewing location with signage, basic amenities and interpretive information, would assist in the appreciation of the rich heritage of the surrounding landscape.
CULTURAL VALUES SIGNIFICANCE RATING		Local-Regional

2.2 LAL LAL FALLS

Significant Landscape

Character Type	2	The Uplands
Character Areas visible in view	2.5	Plateaus and Gorges

A small viewing platform has been created to capture the view of the Lal Lal Falls, located in a small scenic reserve alongside the Gorge.

The images opposite describe the predominant extents of the view.

Overall Significance Rating: Regional

A detailed significance assessment is provided over the following pages.



Lal Lal Falls by Andrew Thomas



Lal Lal Falls by Charles Troedal c. 1864



Lal Lal Gorge by Andrew Thomas



View of the Gorge from the first viewing platform in the Scenic Reserve.

Aesthetic Values

AESTHETIC VALUES				
	Source	Description	Aesthetic Values Rating Considerations (ie. exemplary, iconic, scarce)	Level of Significance
COMPOSITION (STRUCTURE)	Survey	<p>This viewing platform is located to display numerous features of the Lal Lal Gorge that make it such a visually compelling landscape. The platform is situated on the edge of the Gorge, above a tumble of rocks below, and captures a sweeping horseshoe shaped bend in the deeply incised cleft.</p> <p>The Falls at the south-western edge of the Gorge provide a visual focus, and the eye is drawn across the sweeping bend of the Gorge as it disappears out of sight around another twist. The flat surface of the surrounding plain is visible to either side of the Gorge. Mount Buninyong is present as a distinctive volcanic cone rising on the horizon.</p>	The picturesque waterfall, and deeply incised gorge is an iconic feature of the region.	High (Regional)
COMPOSITION (VISUAL QUALITIES)	Survey	<p>The depth that the Gorge cuts into the surrounding landscape is an impressive feature, which is highlighted by the contrast between the surrounding flat, agricultural plain and the deep, weathered textures of the basalt columns that line the walls and edges of the Gorge. The tumbling waters of the Lal Lal Falls provide a picturesque focus for the view. These are subject to seasonal variation, from powerful flows that are dispersed over the rocky cliff face, to more sedate trickles that flow languidly through pools of water below. This variation creates additional drama and interest in the view.</p> <p>This view, and the Falls in particular, have been a focal subject for numerous artists and photographers.</p>	The deep Gorge, exposed basalt and movement of water over the Falls combine to create landscape feature that is exemplary within the regional context.	High (Regional)
OVERALL AESTHETIC SIGNIFICANCE RATING				Regional

Other Cultural Landscape Values

OTHER VALUES		
	Source	Description
SOCIAL VALUE	Desktop Research	The Falls and Gorge have been depicted in numerous works of art. They were a scenic destination valued for the picturesque aesthetic that was favoured in the 1800s.
	Survey	The Lal Lal Falls are a popular tourist destination within the region and for day trippers from Melbourne. There are many walking trails around the Falls and the Gorge.
CULTURAL VALUES SIGNIFICANCE RATING		Regional