

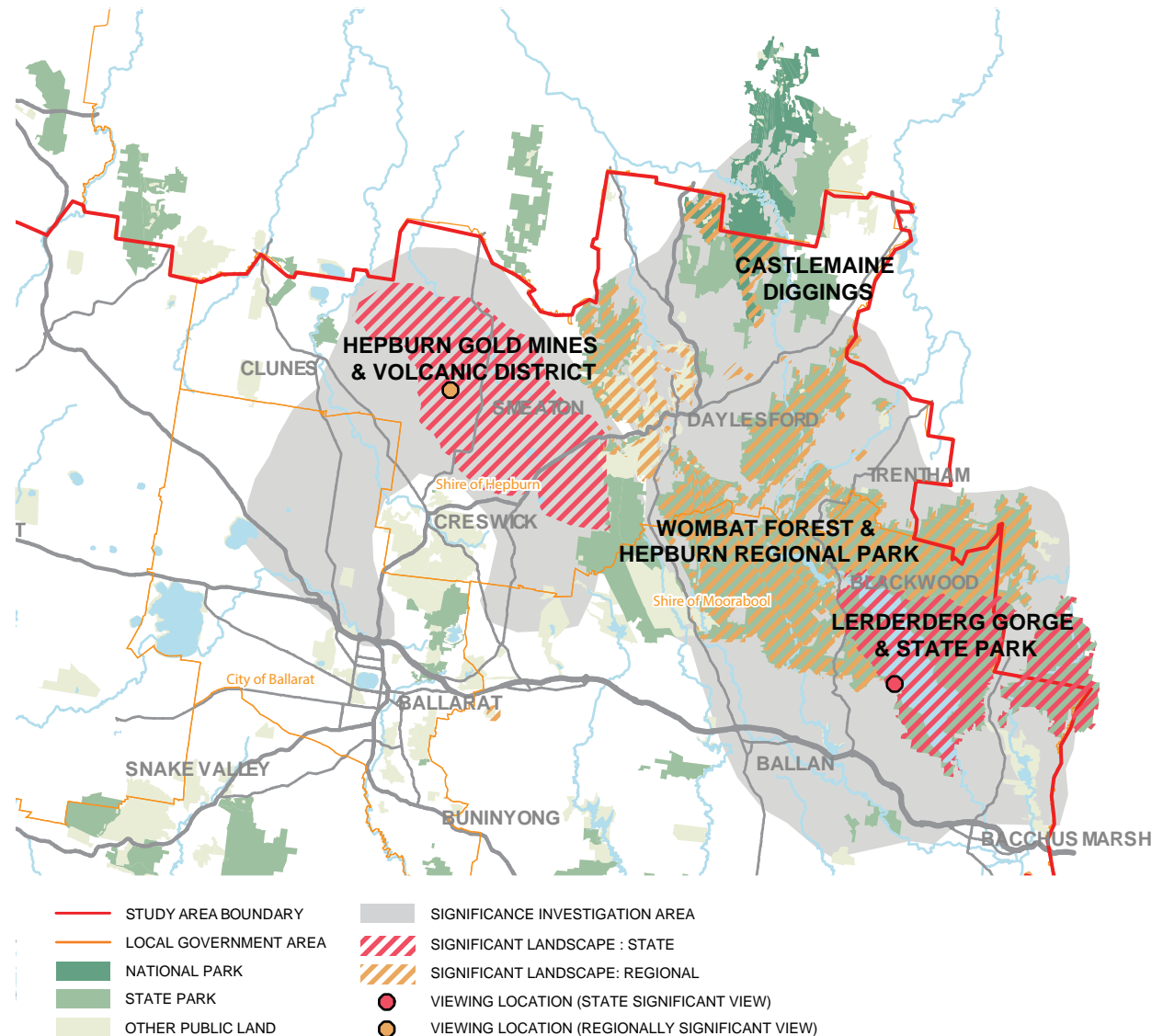
# FORESTED UPLANDS INVESTIGATION AREA

The Forested Uplands Investigation Area includes large areas of state parks and forests, and the Castlemaine Diggings National Heritage Park.

Within this broad investigation area, a number of highly significant landscape features and areas were identified. These include volcanic cones, gold mining areas, gorges and mineral springs.

A significance assessment paper has been prepared for each of these significant landscapes, namely:

- Hepburn Gold Mines & Volcanic District
- Castlemaine Diggings National Heritage Park
- Wombat Forest & Hepburn Regional Park
- Lerderderg Gorge & Park



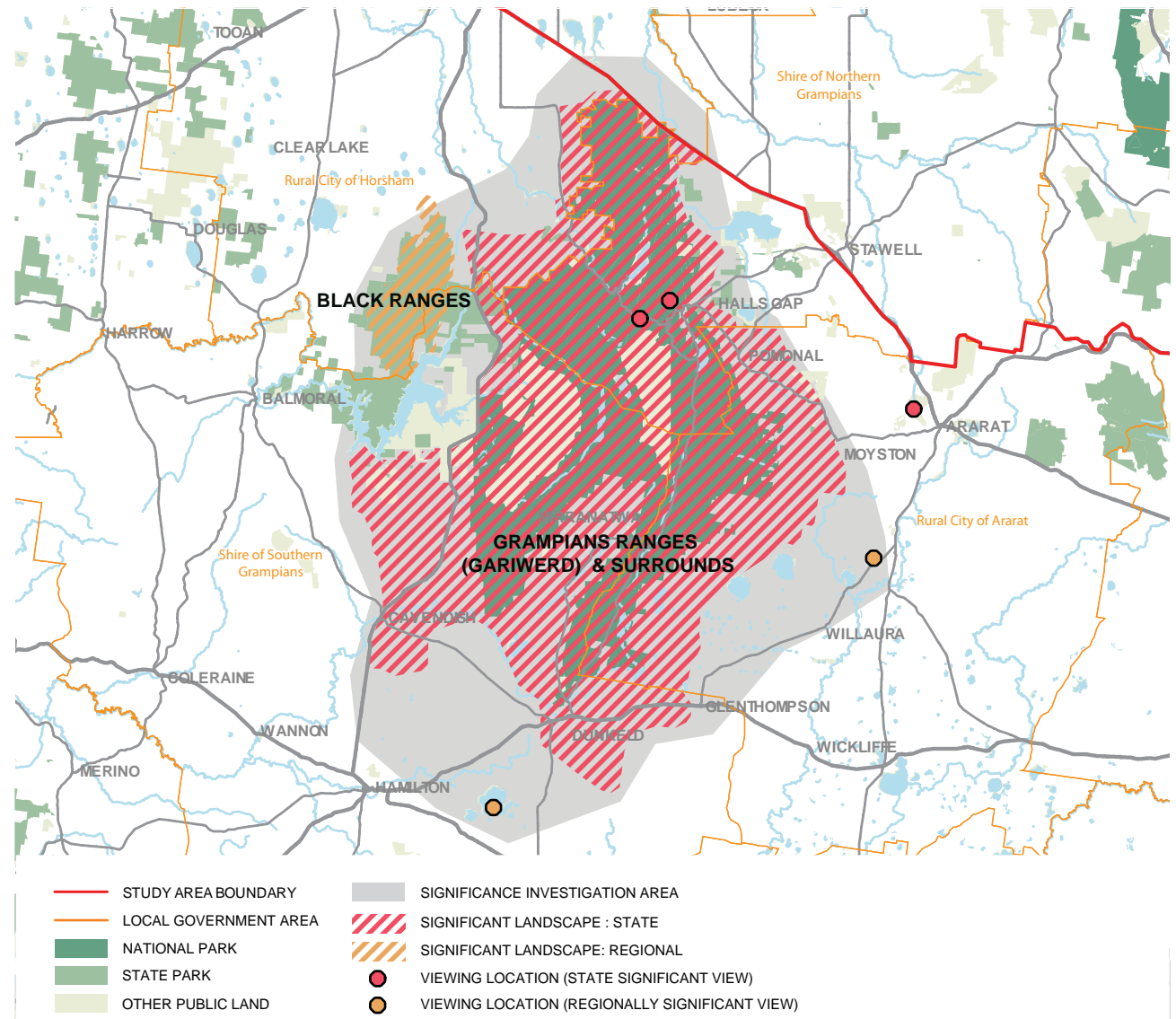
# THE GRAMPIANS (GARIWERD) & SURROUNDS INVESTIGATION AREA

The Grampians (Gariwerd) & Surrounds Investigation Area is a landscape of majestic sandstone mountain ranges, prominent ridges and forested lower slopes.

Within this broad investigation area, a number of highly significant landscape features and areas have been identified. This includes craggy peaks, forested areas, valleys and the paddocks dotted with remnant Red Gums that surround the Ranges.

A significance assessment paper has been prepared for each of these significant landscapes, namely:

- The Grampians (Gariwerd) & Surrounds
- Black Ranges (Burrunj)



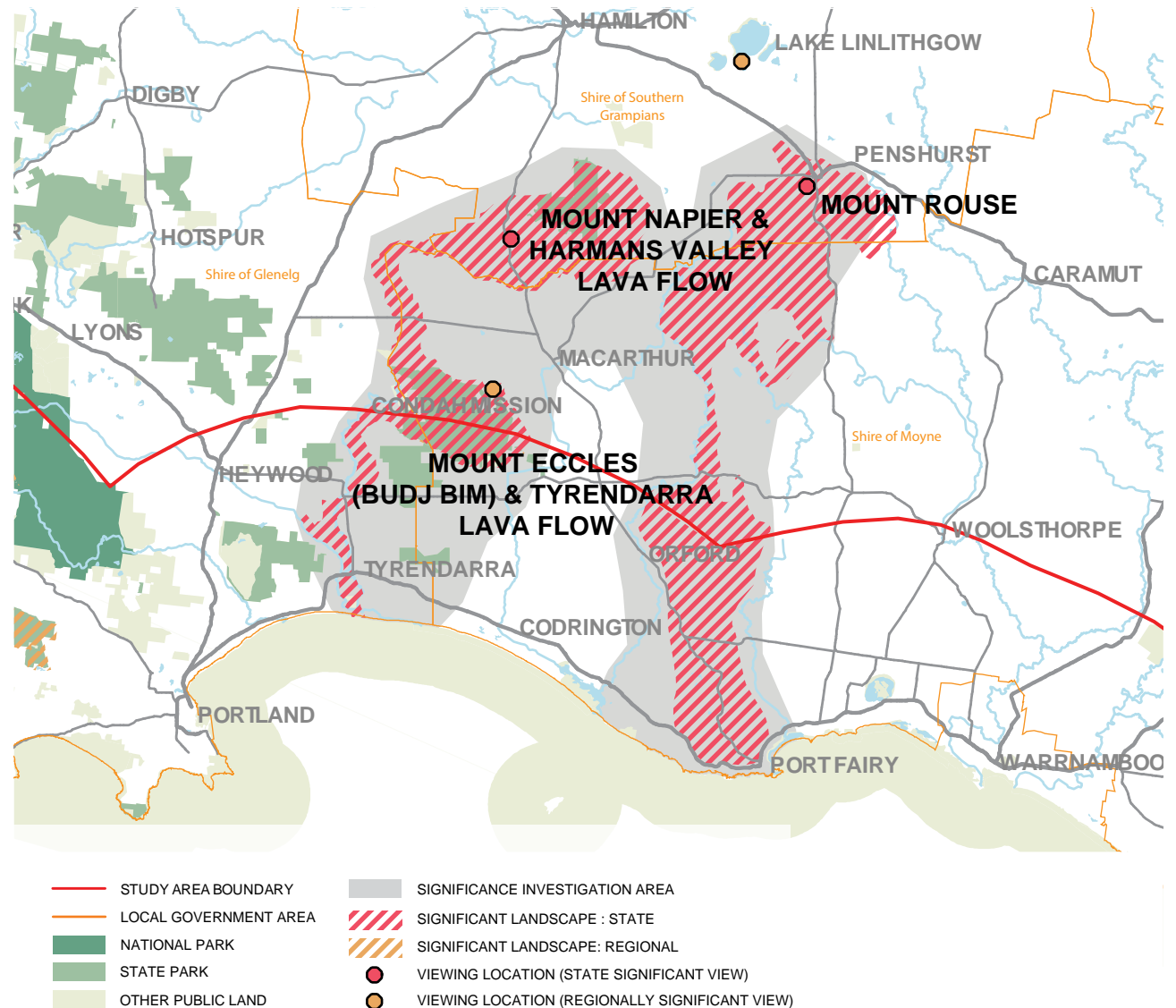
# WESTERN CONES & LAVA FLOWS INVESTIGATION AREA

The Western Cones & Lava Flows Investigation Area is a unique part of western Victoria where the explosive geology is visibly written in the landscape.

Within this broad investigation area, a number of highly significant landscape features and areas have been identified. This includes dormant volcanos, lava flows and volcanic lakes, shown on the map opposite.

A significance assessment paper has been prepared for each of these significant landscapes, namely:

- Mount Rouse
- Mount Eccles (Budj Bim) & Tyrrendarra Lava Flow
- Mount Napier & Harmans Valley Lava Flow



# PLATEAUS & GORGES INVESTIGATION AREA

The Plateaus & Gorges Investigation Area includes a diverse range of landscapes, located between Geelong and Ballarat.

This is a unique area of mountain ranges, isolated rises, rolling hills, plateaus, deep river valleys and gorges.

Within this broad investigation area, a number of highly significant landscape features and areas have been identified.

A significance assessment paper has been prepared for each of these significant landscapes:

- Enfield State Park
- Devils Kitchen
- Lal Lal Gorge
- Werribee Gorge
- Bacchus Marsh Agricultural Valley
- Anakie Hills
- Brisbane Ranges & Rowsley Scarp
- Parwan Valley
- You Yangs
- Mount Buninyong & Warrenheip
- Barrabool Hills.

