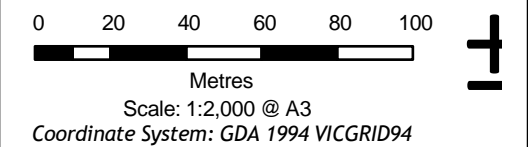


**Legend**

**Trail alignment**

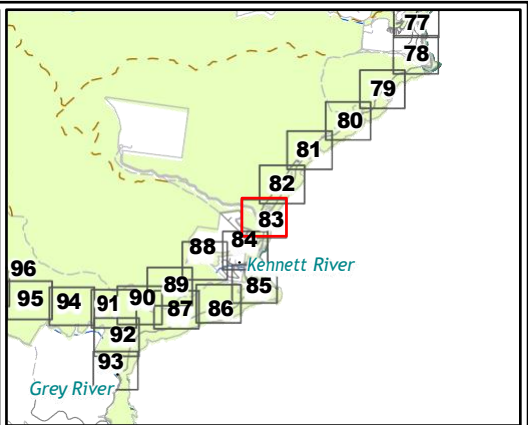
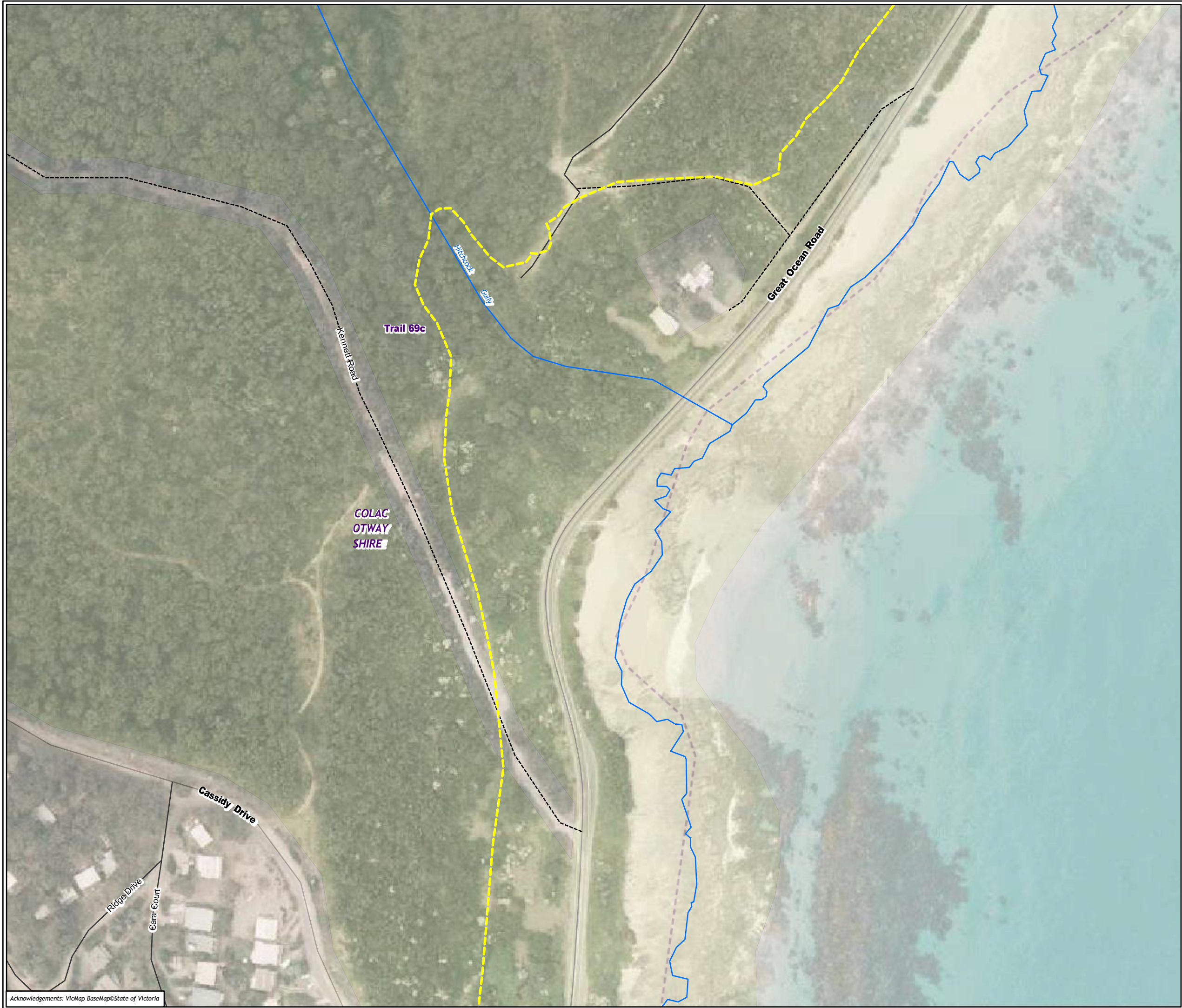
--- Existing Walking Trail

**Figure 7.83 Vegetation loss in the Assessment area**



Matter: 35990,  
Date: 14 December 2022 ,  
Prepared for: ML, Prepared by: MK, Last edited by: mknudsen  
Layout: 35990\_F7\_Veg  
Project: P:\35800s\35871\Mapping\  
35990\_GORT\_WT\_Ecology\_Figures.aprx





**Legend**

**Trail alignment**

--- Existing Walking Trail

**Figure 7.84 Vegetation loss in the Assessment area**

0 20 40 60 80 100

Metres

Scale: 1:2,000 @ A3

Coordinate System: GDA 1994 VICGRID94

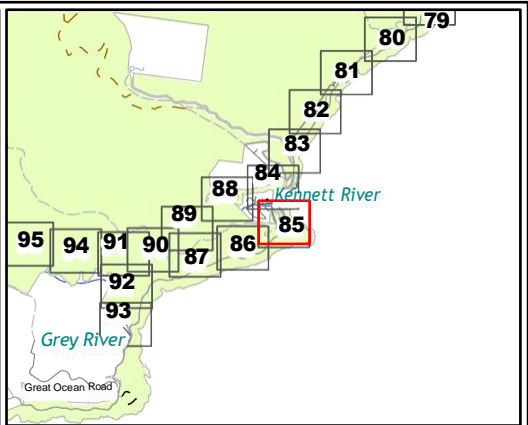


Matter: 35990,  
Date: 14 December 2022 ,  
Prepared for: ML, Prepared by: MK, Last edited by: mknudsen  
Layout: 35990\_F7\_Veg  
Project: P:\35800s\35871\Mapping\  
35990\_GORT\_WT\_Ecology\_Figures.aprx



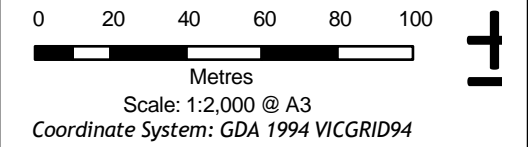






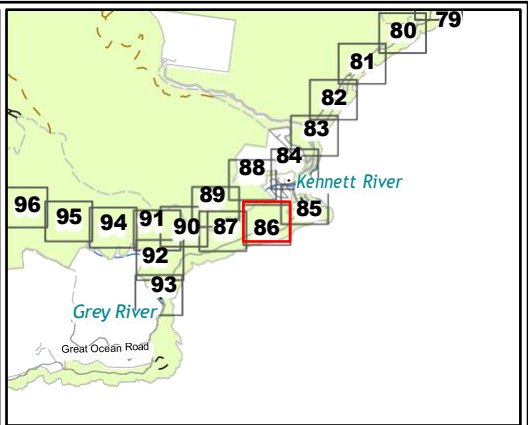
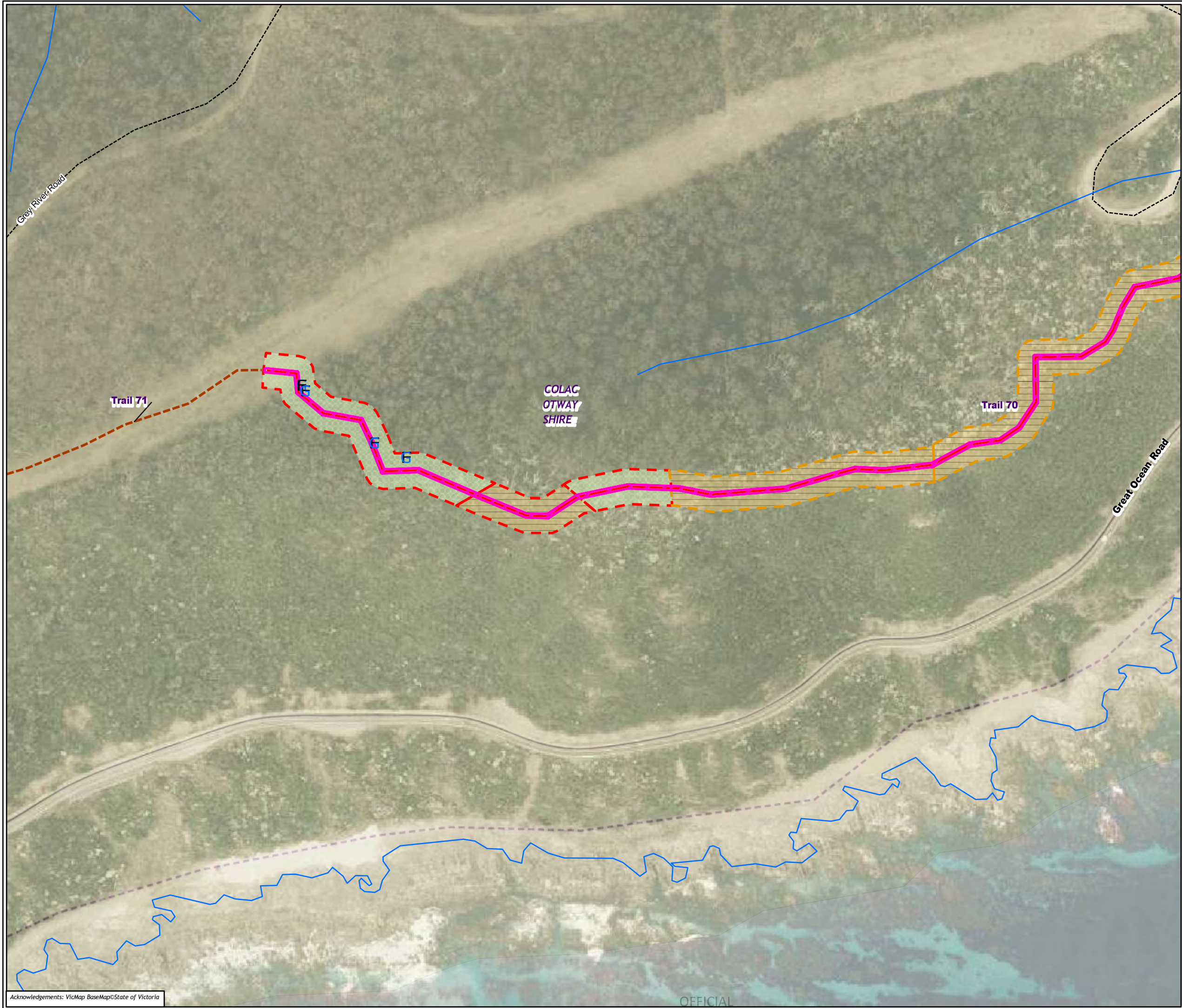
- Legend**
- Vegetation to be removed
  - Trail alignment**
    - New Walking Trail
  - Habitat zone condition/quality**
    - Moderate
    - Low
  - Habitat Zone (EVC)**
    - (OtR\_0161) Coastal Headland
    - Scrub

**Figure 7.86 Vegetation loss in the Assessment area**



Matter: 35990,  
Date: 14 December 2022 ,  
Prepared for: ML, Prepared by: MK, Last edited by: mknudsen  
Layout: 35990\_F7\_Veg  
Project: P:\35800s\35871\Mapping\  
35990\_GORT\_WT\_Ecology\_Figures.aprx





**Legend**

 Vegetation to be removed

**Trail alignment**

 Existing MVO Track

 New Walking Trail

**Large trees in patch**

 *Eucalyptus globulus subsp. globulus* - Southern Blue-gum

**Habitat zone condition/quality**

 High

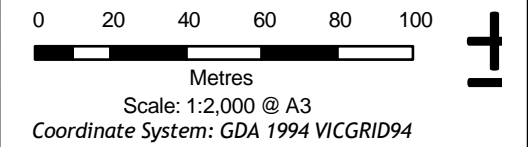
 Moderate

**Habitat Zone (EVC)**

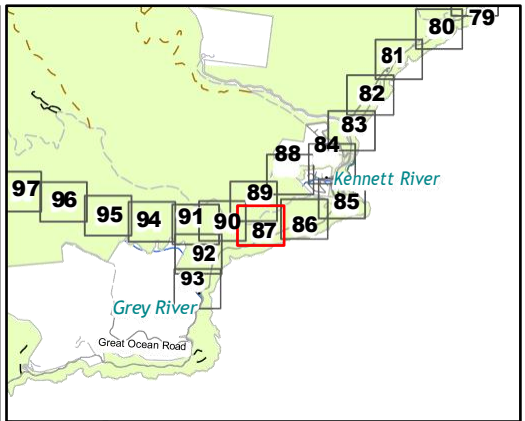
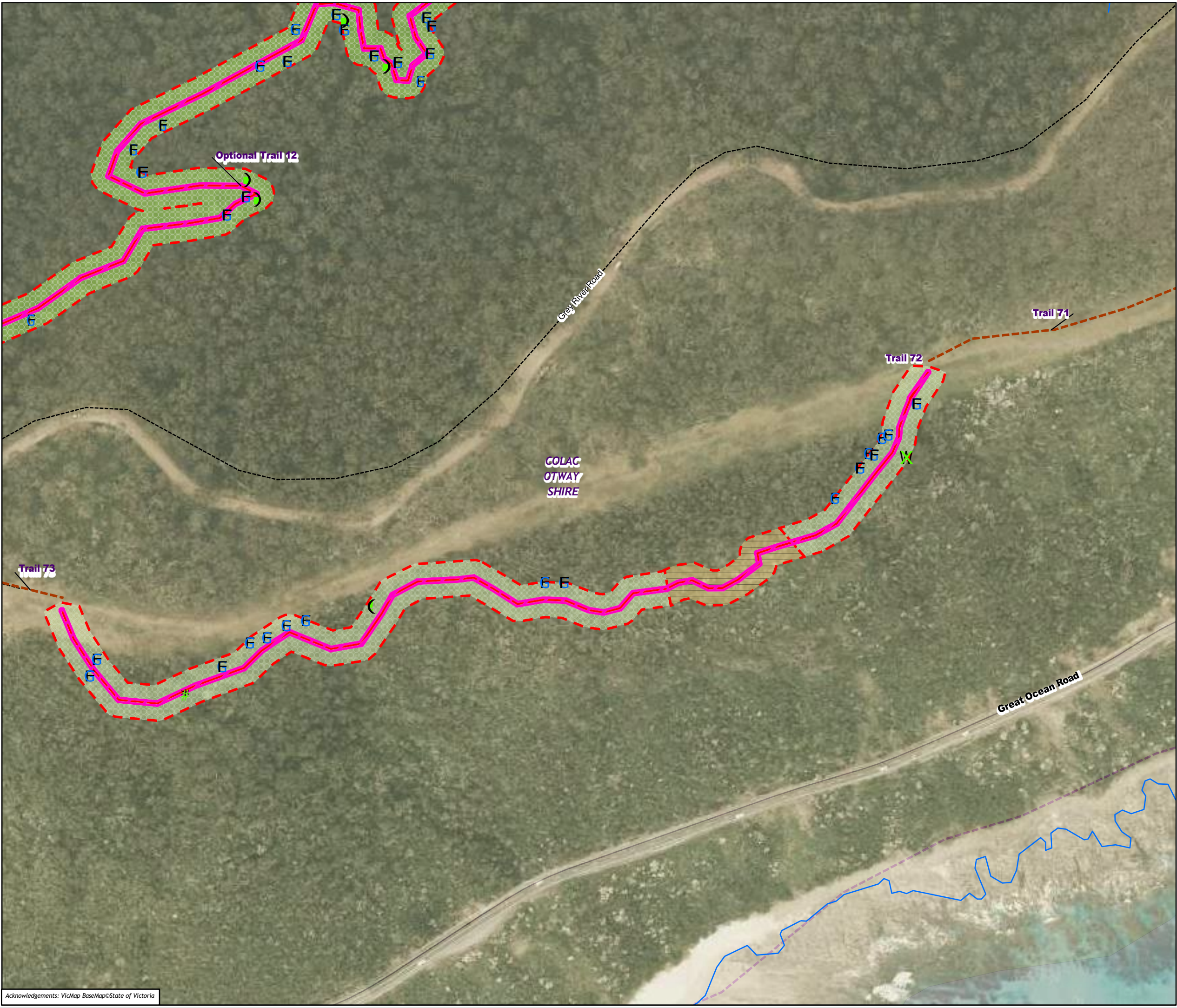
 (OtR\_0045) Shrubby Foothill Forest

 (OtR\_0161) Coastal Headland Scrub

**Figure 7.87 Vegetation loss in the Assessment area**







**Legend**

 Vegetation to be removed

**Trail alignment**

 Existing MVO Track

 New Walking Trail

**Large trees in patch**

 Dead

 *Acacia melanoxylon* - Blackwood

 *Eucalyptus aromaphloia* - Scentbark

 *Eucalyptus globulus* - Southern Blue-gum

 *Eucalyptus globulus subsp. globulus* - Southern Blue-gum

**Habitat zone condition/quality**

 High

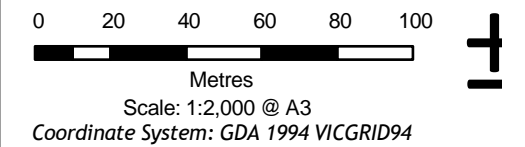
**Habitat Zone (EVC)**

 (OtR\_0045) Shrubby Foothill Forest

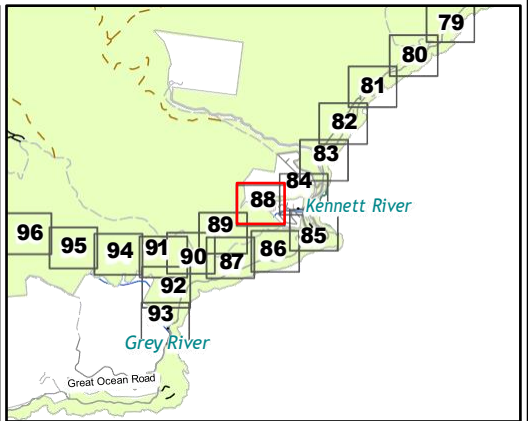
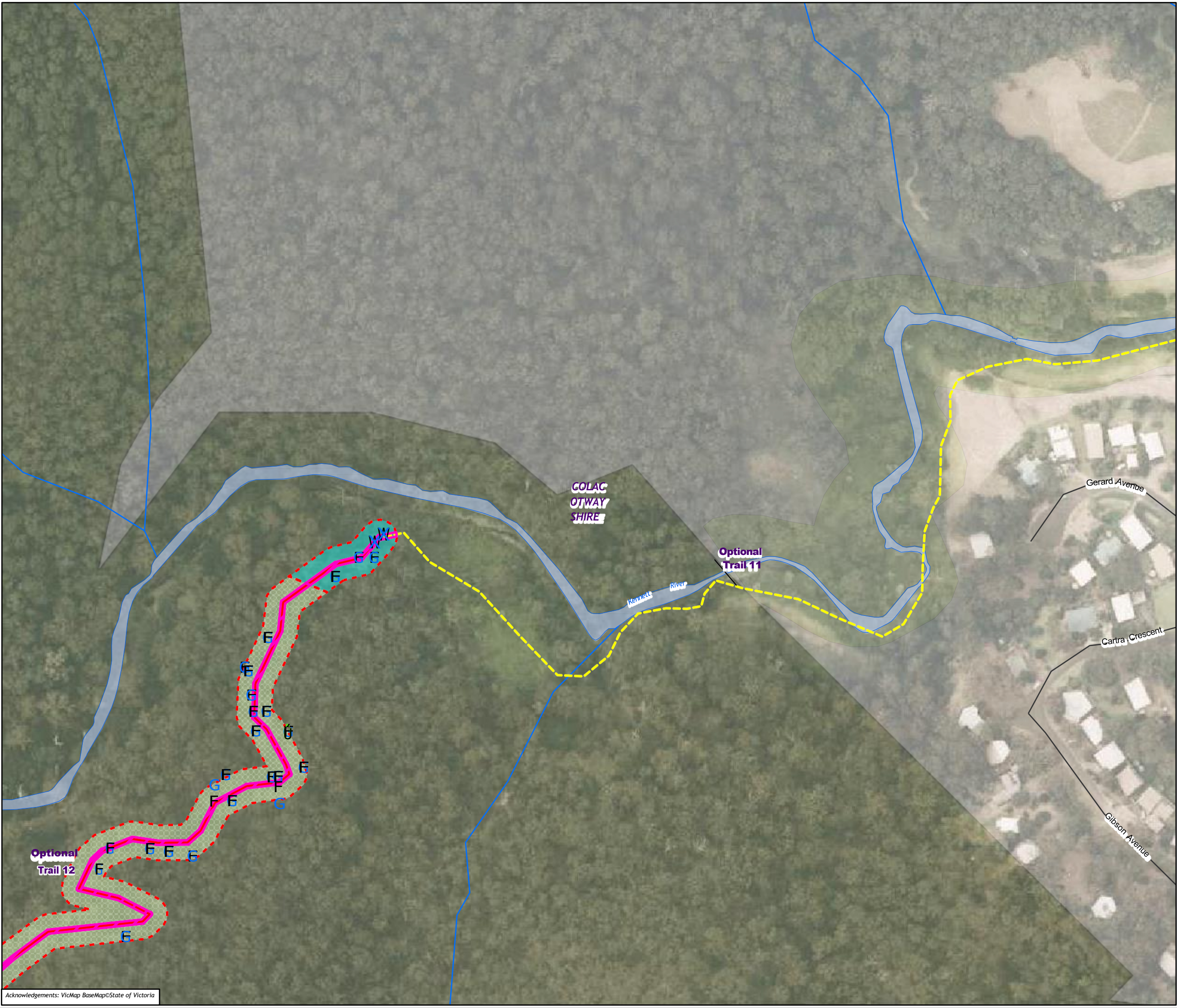
 (OtR\_0161) Coastal Headland Scrub

 Scrub


**Figure 7.88 Vegetation loss in the Assessment area**









**Legend**


 Vegetation to be removed


**Trail alignment**


 Existing Walking Trail

 New Walking Trail


**Large trees in patch**

 *Eucalyptus obliqua* - Messmate Stringybark


 *Eucalyptus viminalis subsp. viminalis* - Manna Gum

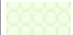
 *Eucalyptus globulus subsp. globulus* - Southern Blue-gum

**Habitat zone condition/quality**

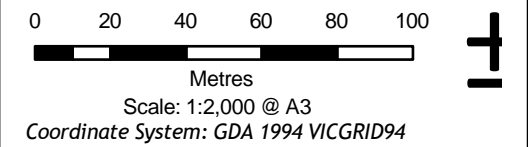
 High

**Habitat Zone (EVC)**

 (OtR\_0018) Riparian Forest

 (OtR\_0045) Shrubby Foothill Forest

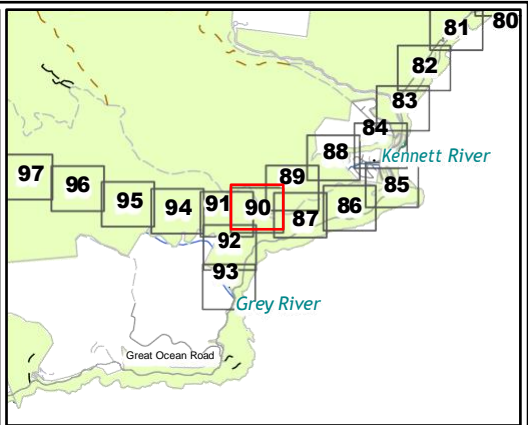
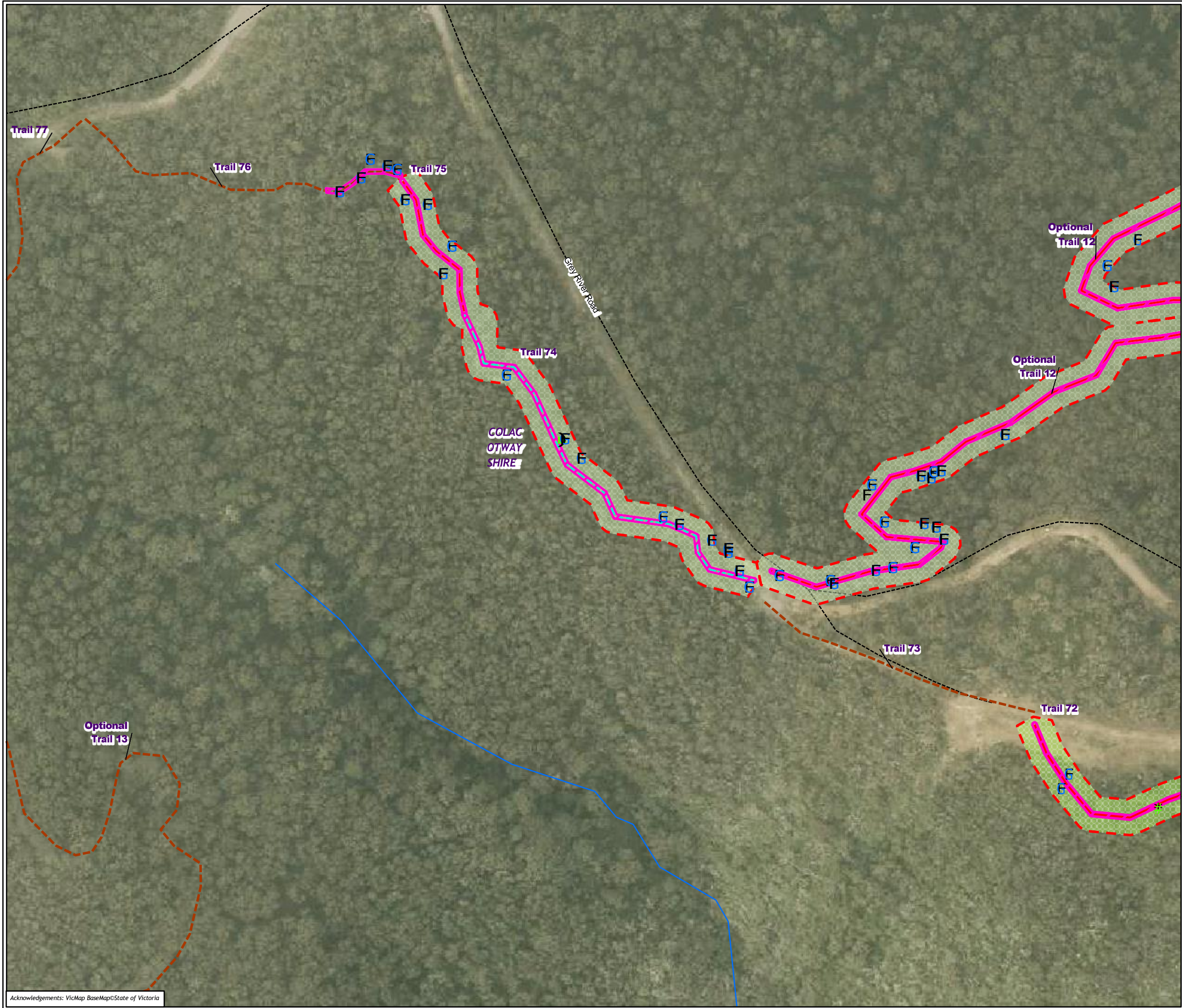
**Figure 7.89 Vegetation loss in the Assessment area**











**Legend**

Vegetation to be removed

**Trail alignment**

- Existing Informal Trail
- Existing MVO Track
- New Walking Trail

**Large trees in patch**

- Dead
- Acacia melanoxyton* - Blackwood
- Eucalyptus globulus* subsp. *globulus* - Southern Blue-gum

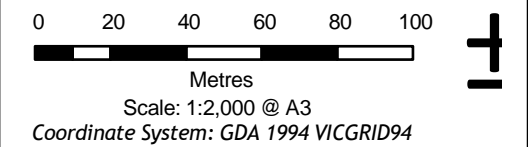
**Habitat zone condition/quality**

- High

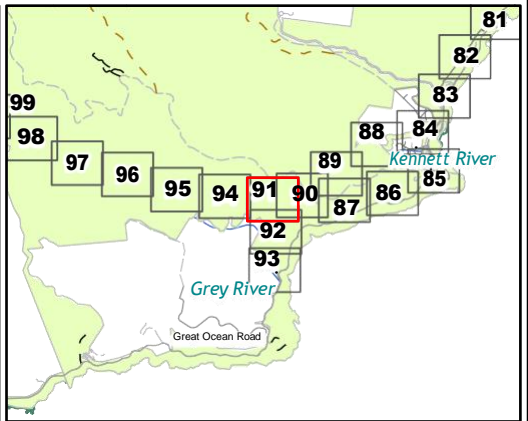
**Habitat Zone (EVC)**

- (OtR\_0045) Shrubby Foothill Forest

**Figure 7.91 Vegetation loss in the Assessment area**







**Legend**

Vegetation to be removed

**Trail alignment**

- Existing Informal Trail
- Existing MVO Track
- New Walking Trail

**Large trees in patch**

*Eucalyptus globulus subsp. globulus* - Southern Blue-gum

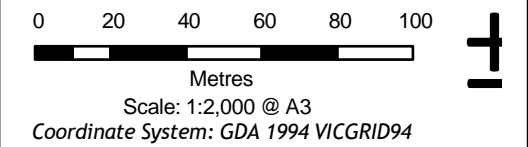
**Habitat zone condition/quality**

High

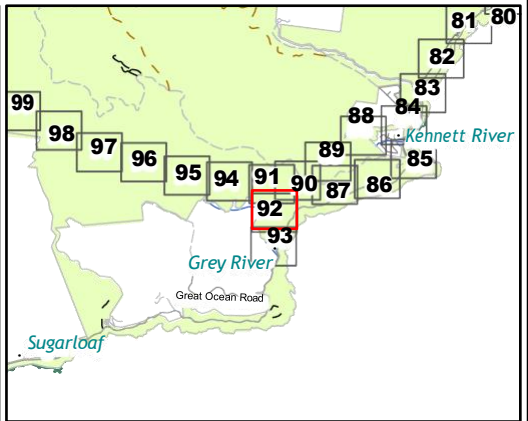
**Habitat Zone (EVC)**

(OtR\_0045) Shrubby Foothill Forest


**Figure 7.92 Vegetation loss in the Assessment area**









**Legend**


 Vegetation to be removed


**Trail alignment**

 Existing MVO Track


 New Walking Trail

**Large trees in patch**


 *Eucalyptus globulus* - Southern Blue-gum

 *Eucalyptus obliqua* - Messmate Stringybark

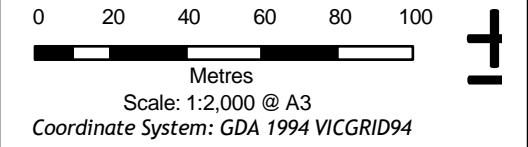
**Habitat zone condition/quality**

 High

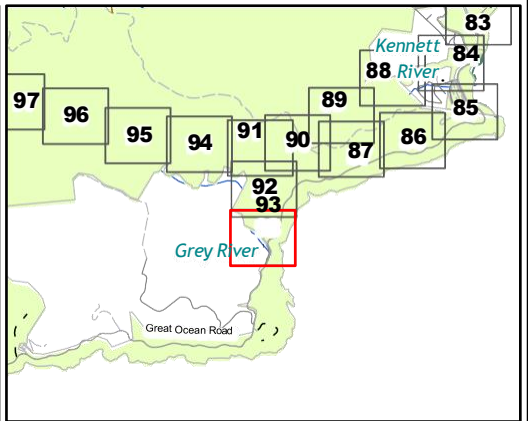
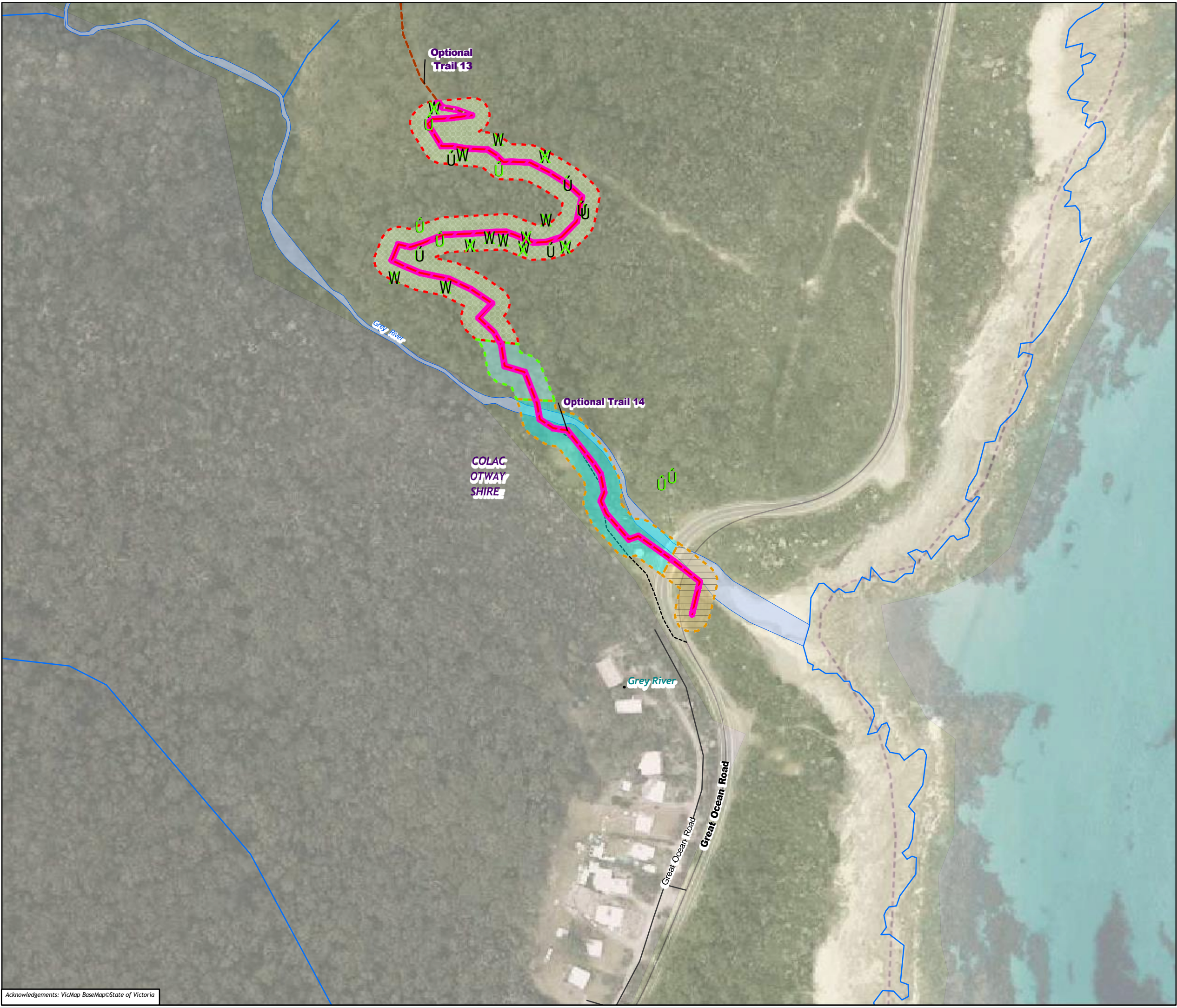
**Habitat Zone (EVC)**

 (OtR\_0045) Shrubby Foothill Forest

**Figure 7.93 Vegetation loss in the Assessment area**







**Legend**

Vegetation to be removed

**Trail alignment**

Existing MVO Track

New Walking Trail

**Large trees in patch**

*Eucalyptus globulus* - Southern Blue-gum

*Eucalyptus obliqua* - Messmate Stringybark

**Habitat zone condition/quality**

High

Moderate

Low

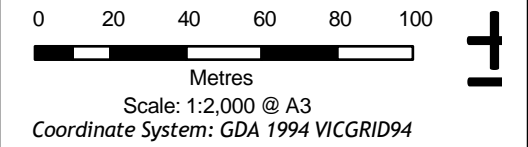
**Habitat Zone (EVC)**

(OtR\_0018) Riparian Forest

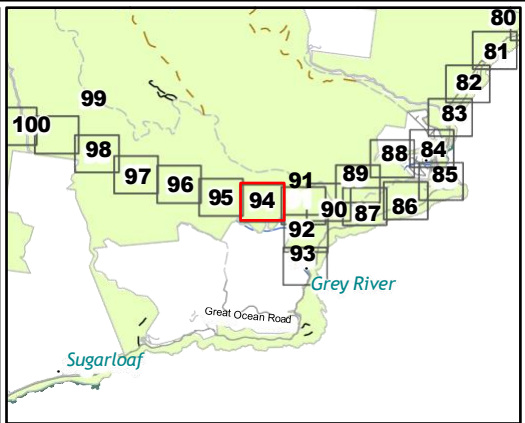
(OtR\_0045) Shrubby Foothill Forest

(OtR\_0161) Coastal Headland Scrub


**Figure 7.94 Vegetation loss in the Assessment area**








**Legend**

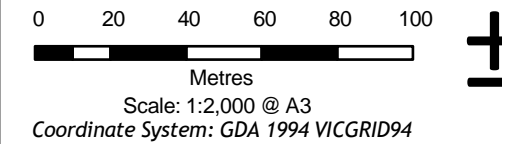
 Assessment corridor - Unassessed

**Trail alignment**

 Existing Informal Trail

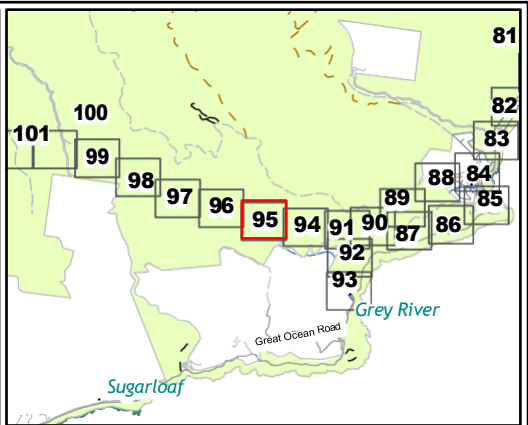
 New Walking Trail



**Figure 7.95 Vegetation loss in the Assessment area**



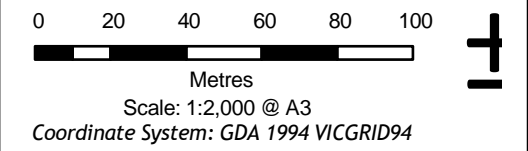
Matter: 35990,  
Date: 14 December 2022 ,  
Prepared for: ML, Prepared by: MK, Last edited by: mknudsen  
Layout: 35990\_F7\_Veg  
Project: P:\35800s\35871\Mapping\  
35990\_GORT\_WT\_Ecology\_Figures.aprx





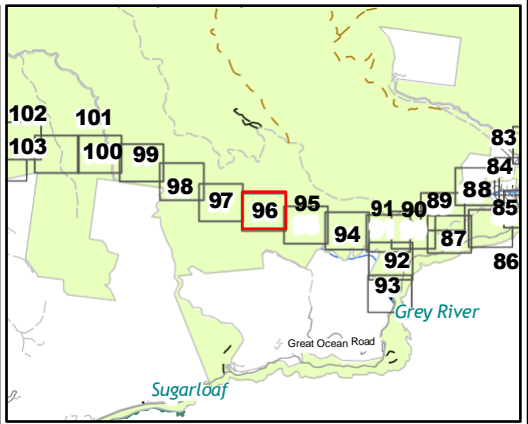
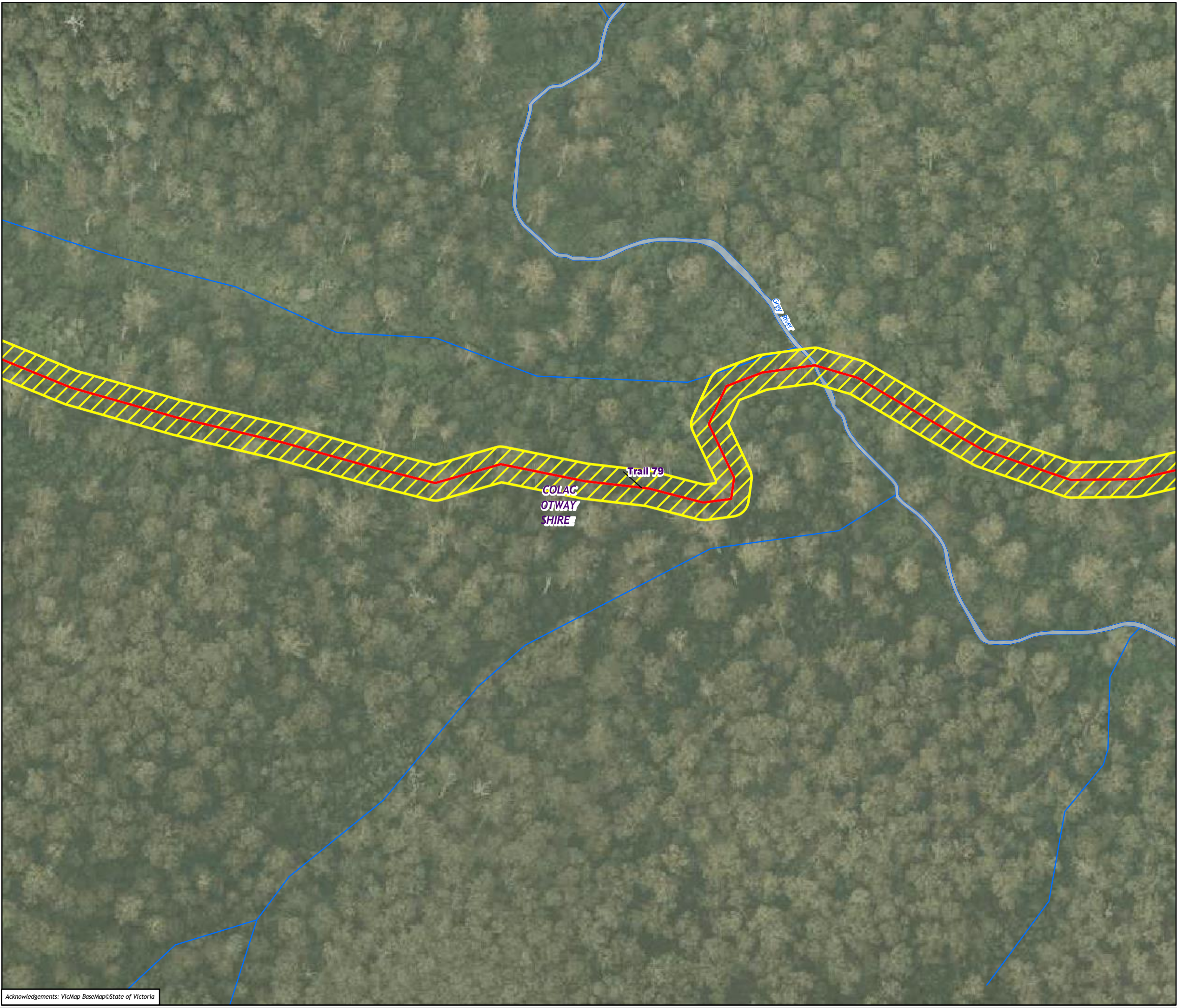
- Legend**
-  Assessment corridor - Unassessed
  - Trail alignment**
  -  New Walking Trail

**Figure 7.96 Vegetation loss in the Assessment area**




Matter: 35990,  
Date: 14 December 2022 ,  
Prepared for: ML, Prepared by: MK, Last edited by: mknudsen  
Layout: 35990\_F7\_Veg  
Project: P:\35800s\35871\Mapping\  
35990\_GORT\_WT\_Ecology\_Figures.aprx






**Legend**

 Assessment corridor - Unassessed

**Trail alignment**

 New Walking Trail



**Figure 7.97 Vegetation loss in the Assessment area**

0 20 40 60 80 100

Metres

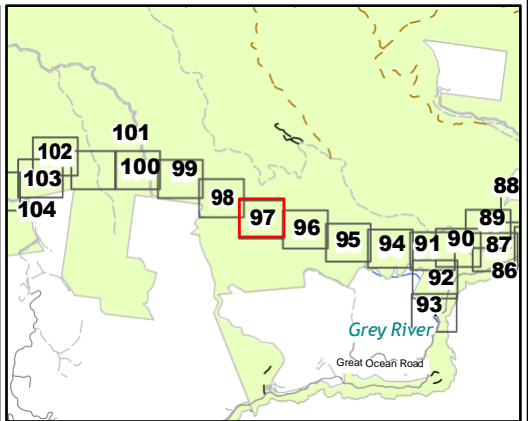
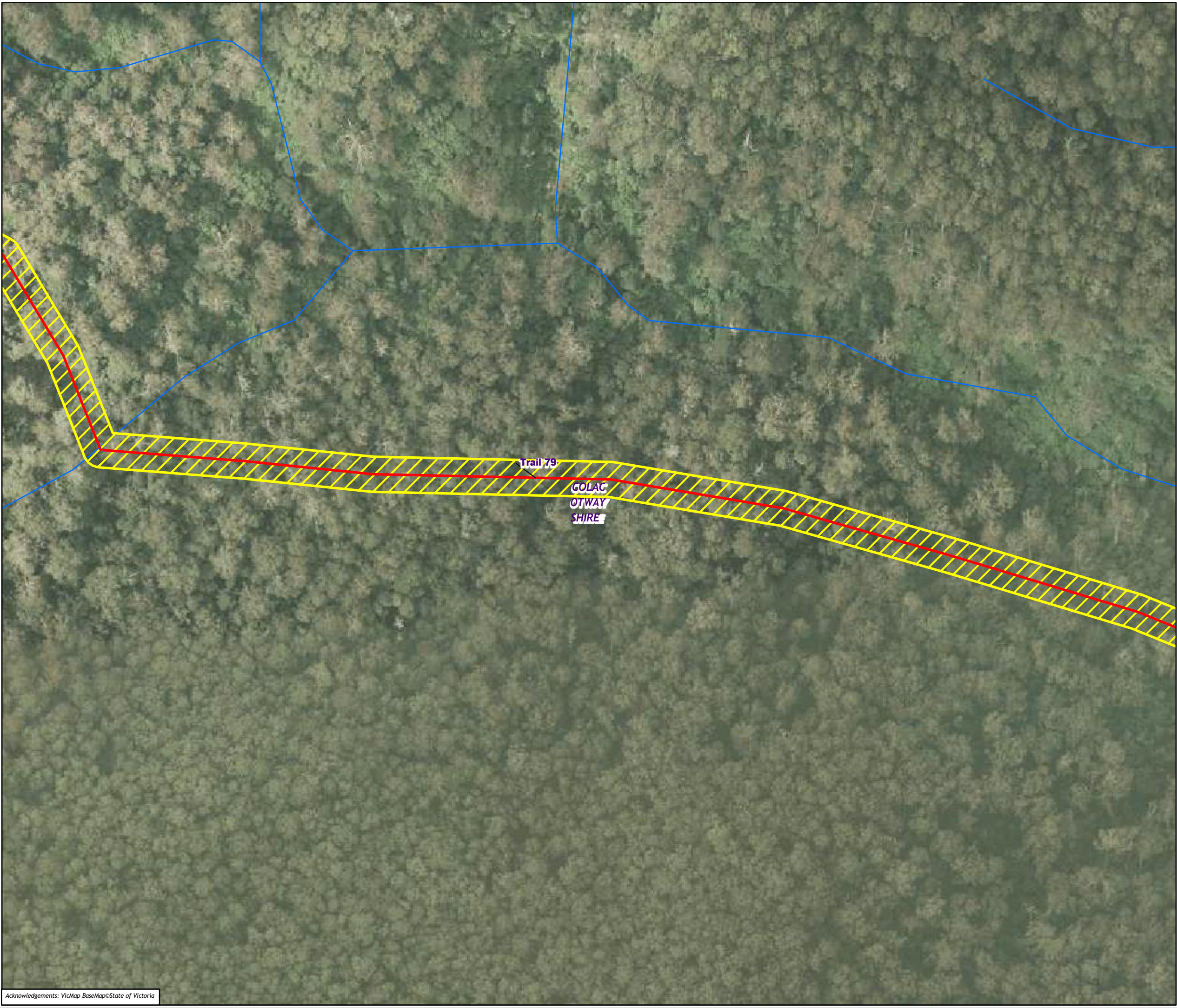
Scale: 1:2,000 @ A3



Coordinate System: GDA 1994 VICGRID94



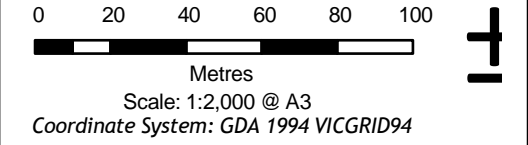
Matter: 35990,  
Date: 14 December 2022 ,  
Prepared for: ML, Prepared by: MK, Last edited by: mknudsen  
Layout: 35990\_F7\_Veg  
Project: P:\35800s\35871\Mapping\  
35990\_GORT\_WT\_Ecology\_Figures.aprx



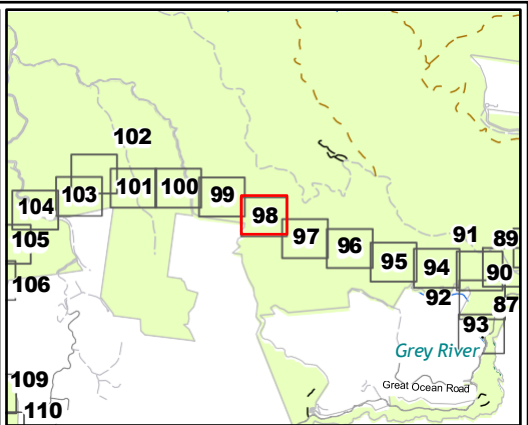


- Legend**
-  Assessment corridor - Unassessed
  - Trail alignment**
  -  New Walking Trail

**Figure 7.98 Vegetation loss in the Assessment area**

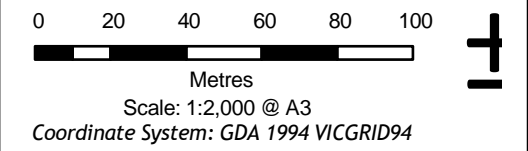






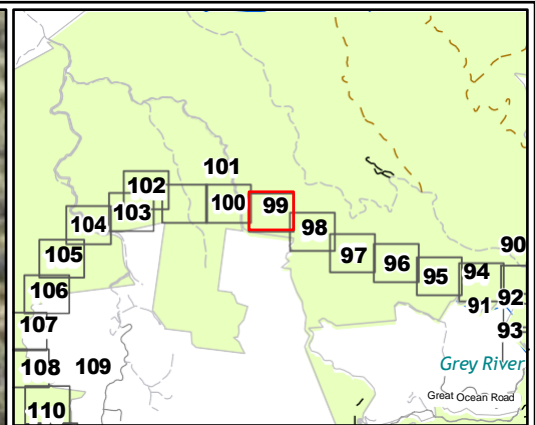
- Legend**
- Assessment corridor - Unassessed
  - Trail alignment**
    - New Walking Trail

**Figure 7.99 Vegetation loss in the Assessment area**




Matter: 35990,  
Date: 14 December 2022 ,  
Prepared for: ML, Prepared by: MK, Last edited by: mknudsen  
Layout: 35990\_F7\_Veg  
Project: P:\35800s\35871\Mapping\  
35990\_GORT\_WT\_Ecology\_Figures.aprx





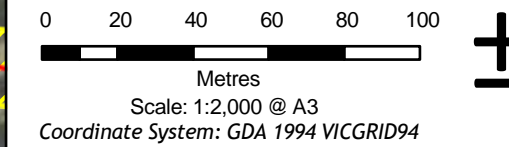
**Legend**

 Assessment corridor - Unassessed

**Trail alignment**

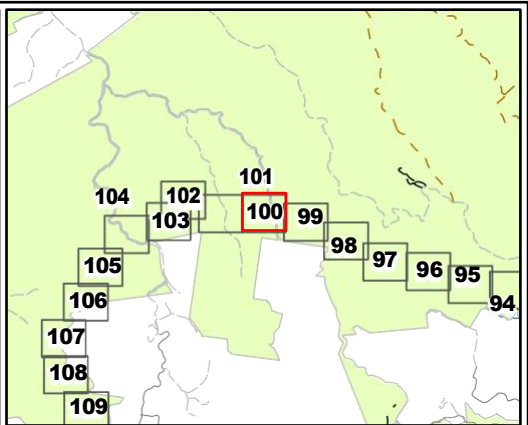
 New Walking Trail

**Figure 7.100 Vegetation loss in the Assessment area**



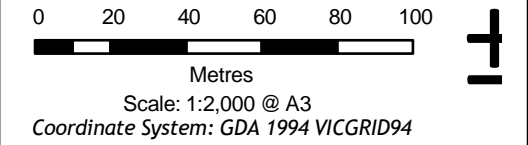
Matter: 35990,  
Date: 14 December 2022 ,  
Prepared for: ML, Prepared by: MK, Last edited by: mknudsen  
Layout: 35990\_F7\_Veg  
Project: P:\35800s\35871\Mapping\  
35990\_GORT\_WT\_Ecology\_Figures.aprx



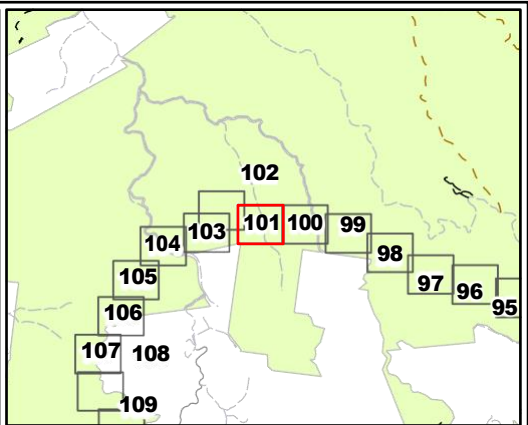
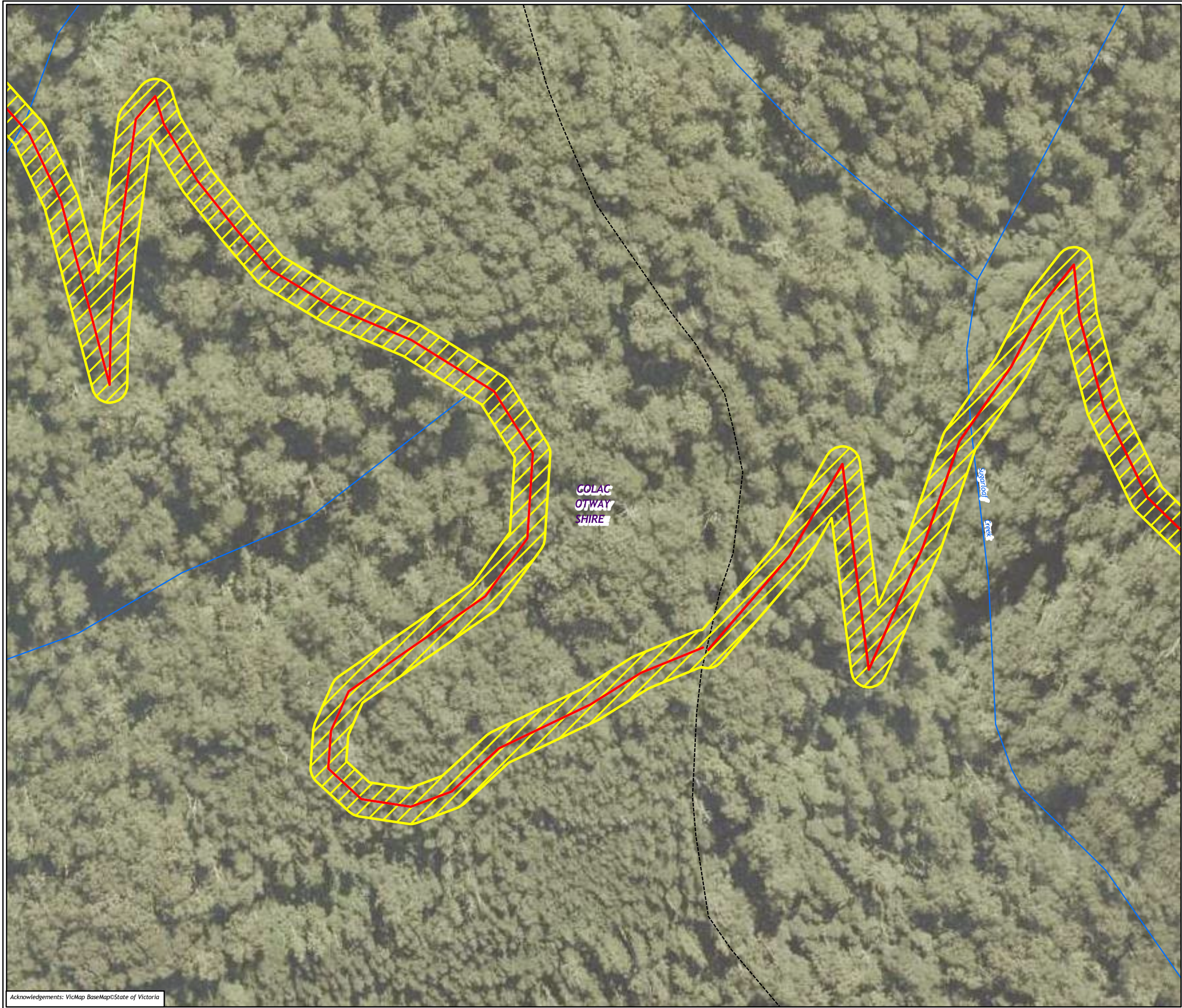


- Legend**
- Assessment corridor - Unassessed
  - Trail alignment**
    - New Walking Trail

**Figure 7.101 Vegetation loss in the Assessment area**

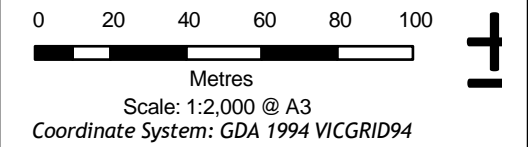




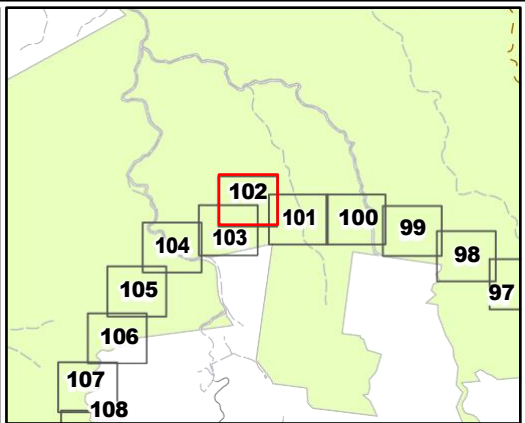
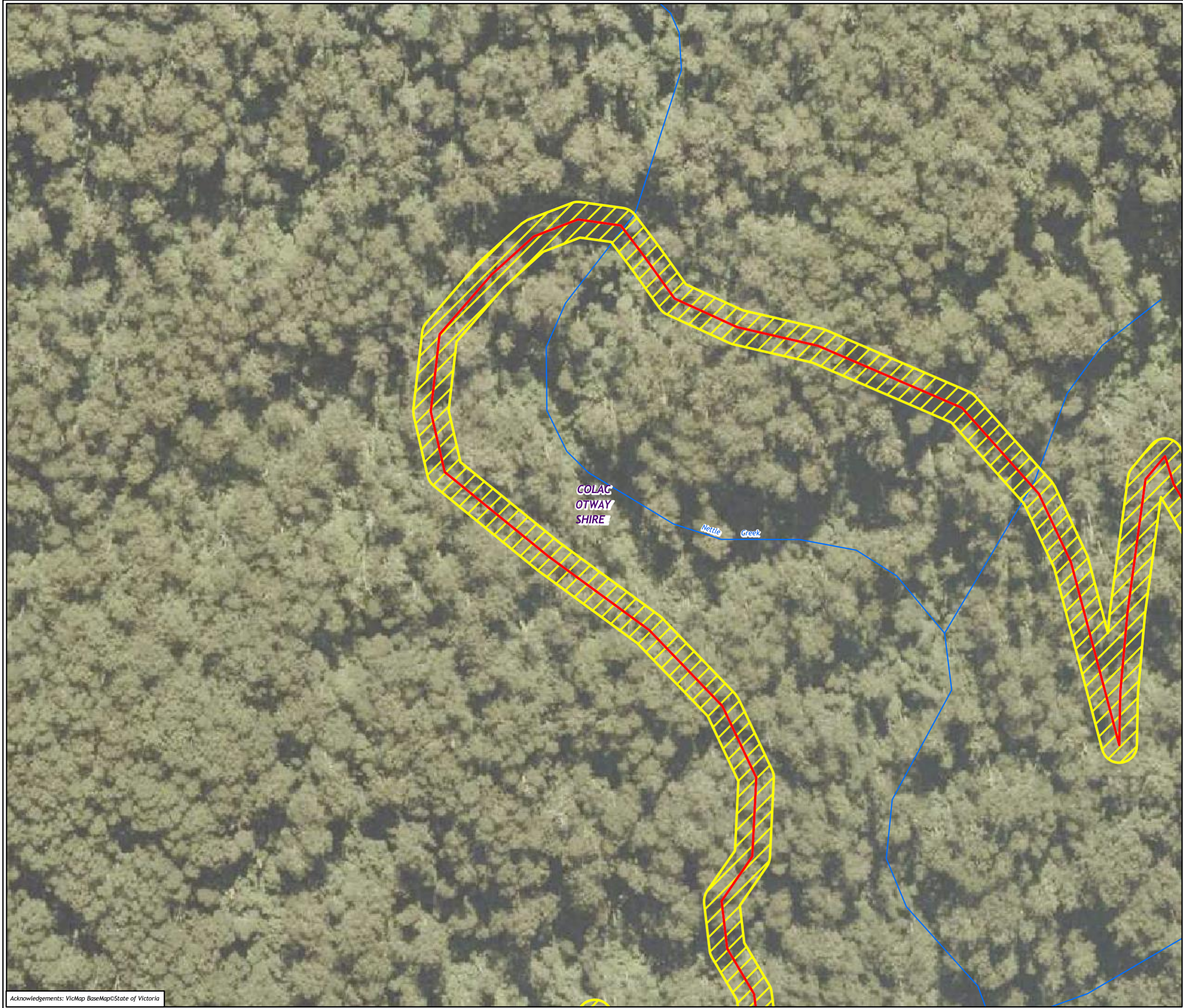


- Legend**
- Assessment corridor - Unassessed
  - Trail alignment**
    - New Walking Trail

**Figure 7.102 Vegetation loss in the Assessment area**

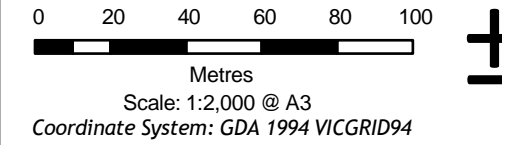






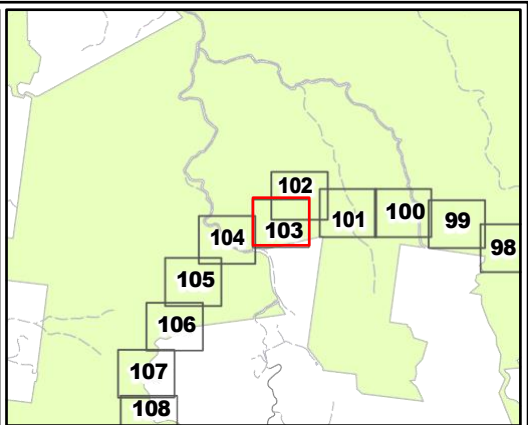
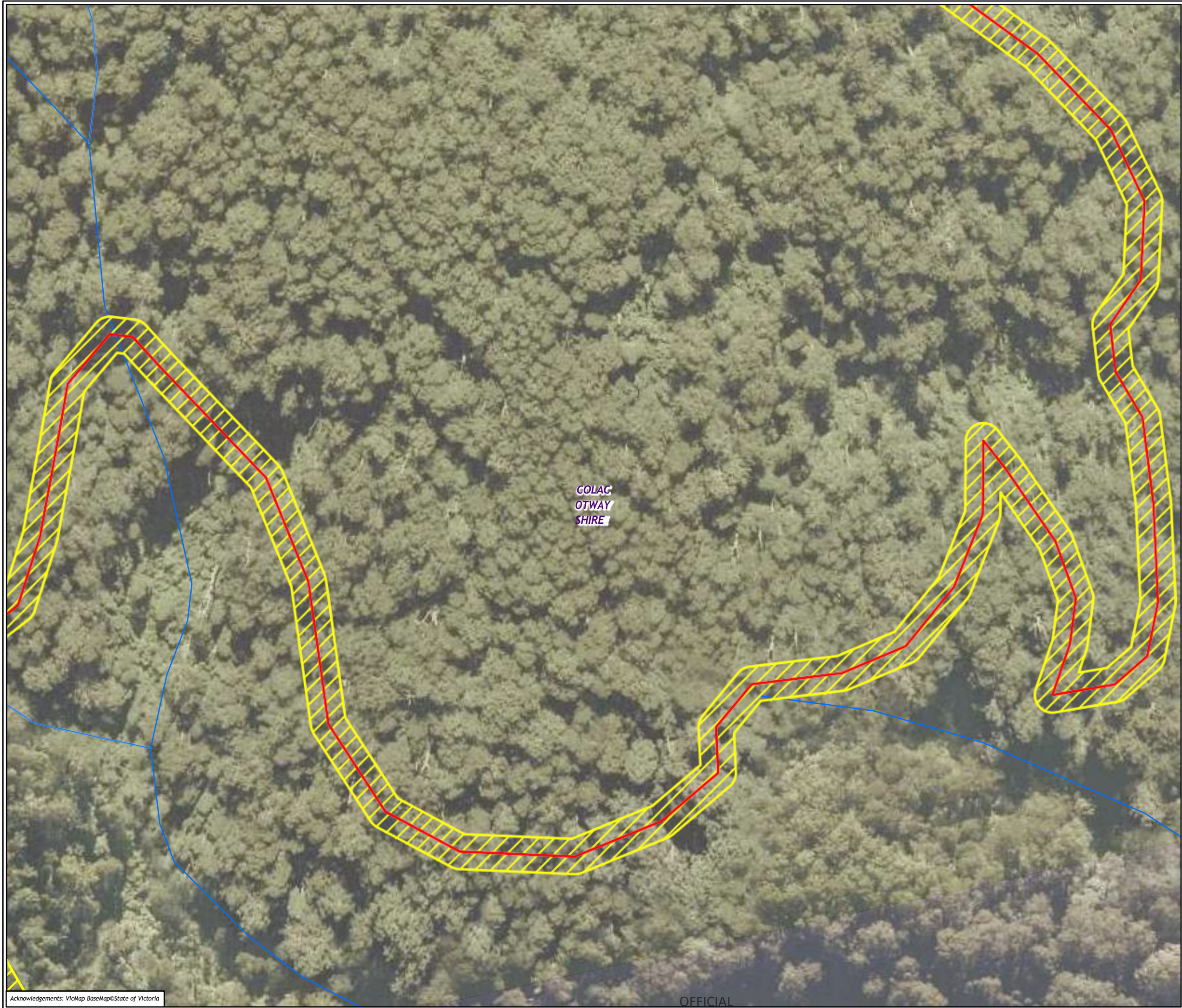
- Legend**
- Assessment corridor - Unassessed
- Trail alignment**
- New Walking Trail

**Figure 7.103 Vegetation loss in the Assessment area**



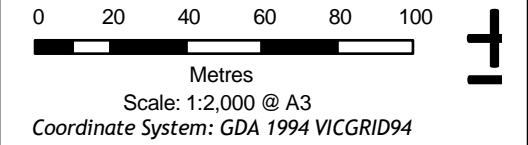
Matter: 35990,  
Date: 14 December 2022 ,  
Prepared for: ML, Prepared by: MK, Last edited by: mknudsen  
Layout: 35990\_F7\_Veg  
Project: P:\35800s\35871\Mapping\  
35990\_GORT\_WT\_Ecology\_Figures.aprx



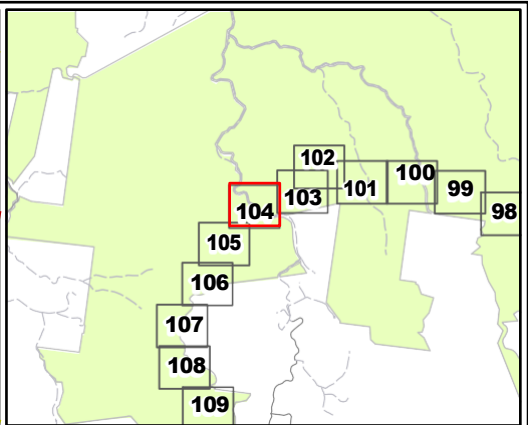




- Legend**
- Assessment corridor - Unassessed
- Trail alignment**
- New Walking Trail

**Figure 7.104 Vegetation loss in the Assessment area**

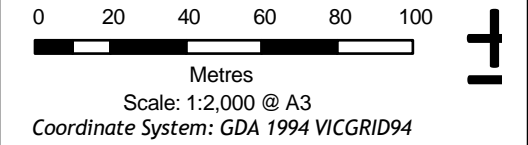




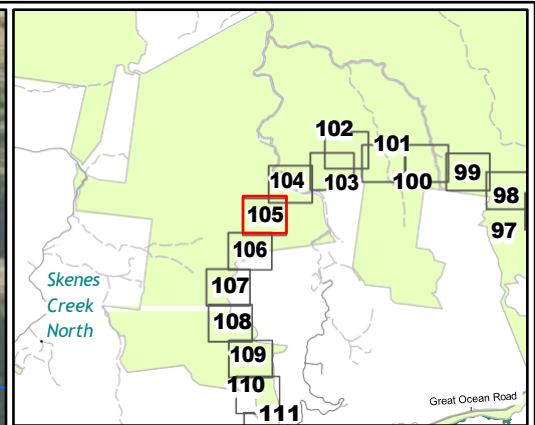
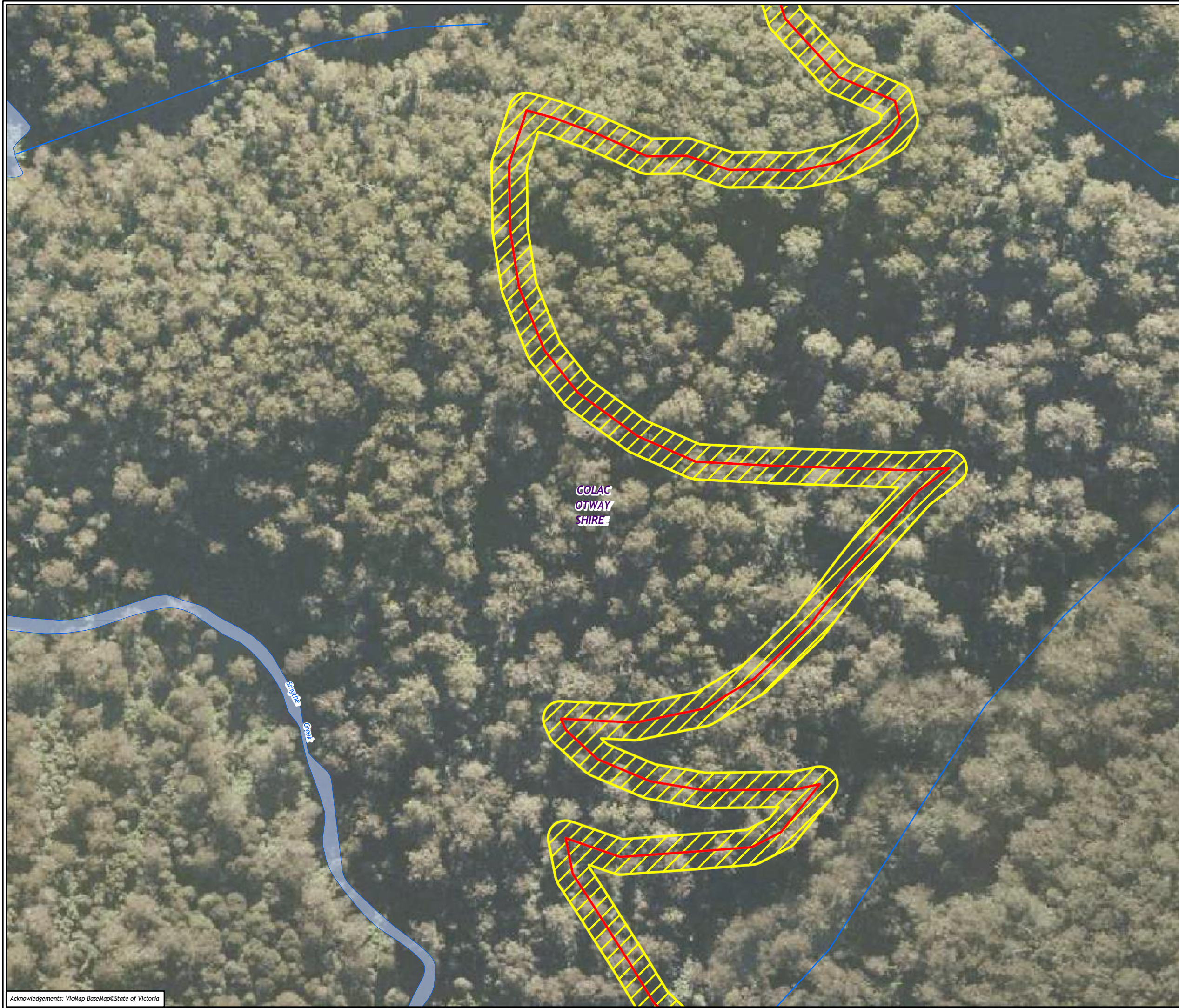


- Legend**
-  Assessment corridor - Unassessed
- Trail alignment**
-  New Walking Trail

**Figure 7.105 Vegetation loss in the Assessment area**

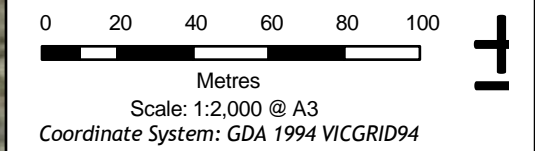






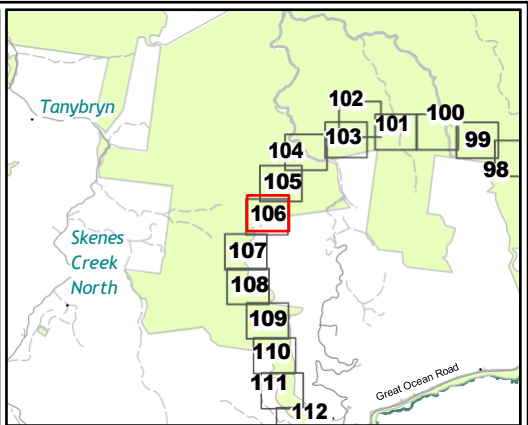
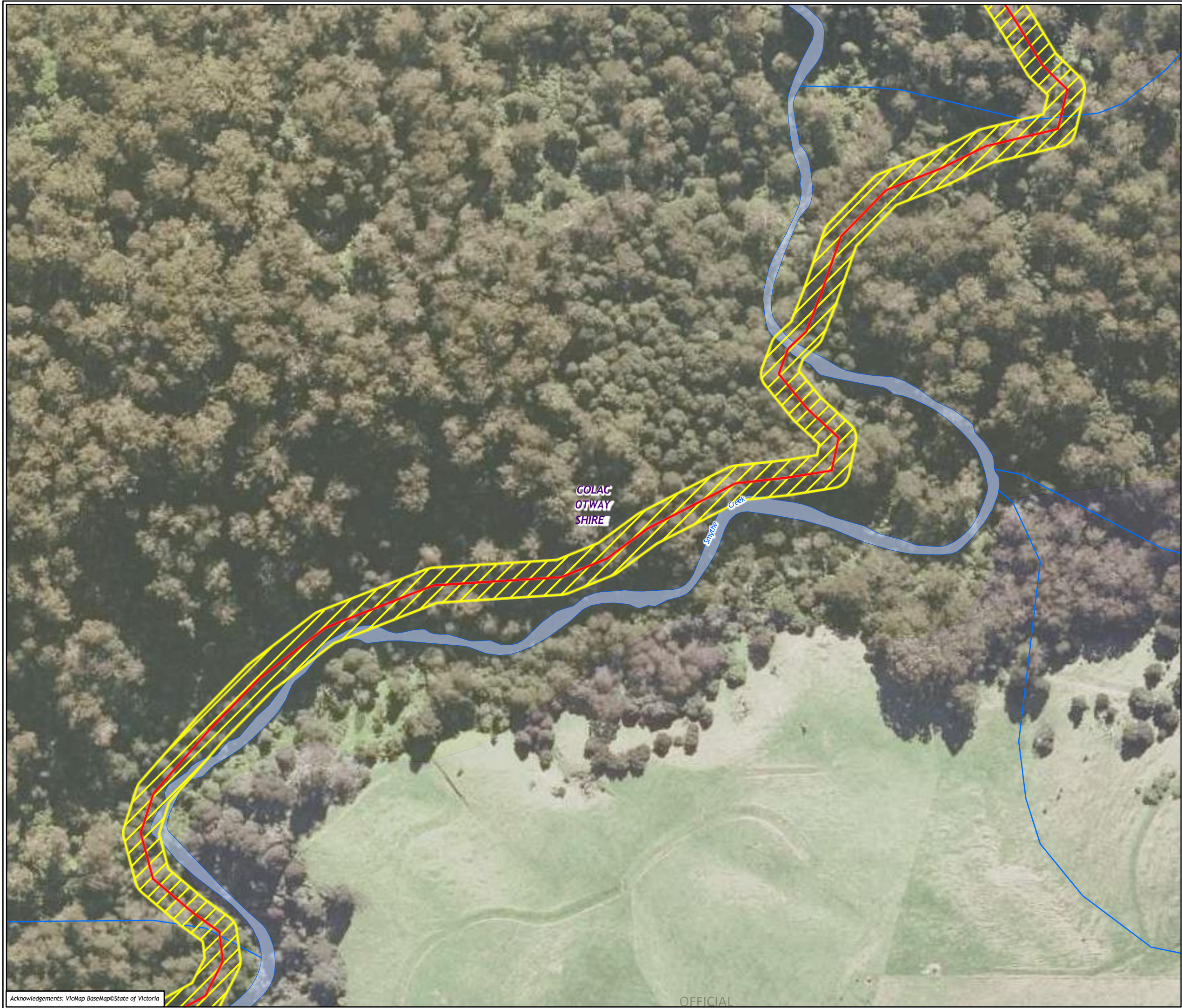
- Legend**
- Assessment corridor - Unassessed
- Trail alignment**
- New Walking Trail

**Figure 7.106 Vegetation loss in the Assessment area**



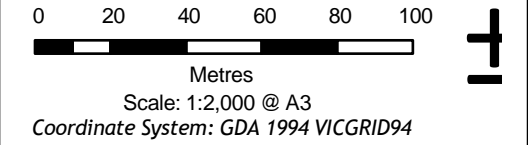
Matter: 35990,  
Date: 14 December 2022 ,  
Prepared for: ML, Prepared by: MK, Last edited by: mknudsen  
Layout: 35990\_F7\_Veg  
Project: P:\35800s\35871\Mapping\  
35990\_GORT\_WT\_Ecology\_Figures.aprx





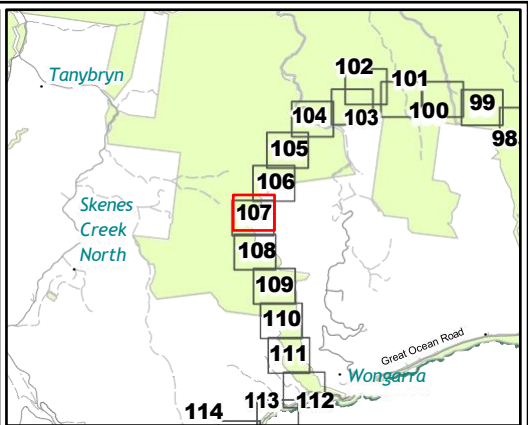
- Legend**
- Assessment corridor - Unassessed
- Trail alignment**
- New Walking Trail

**Figure 7.107 Vegetation loss in the Assessment area**



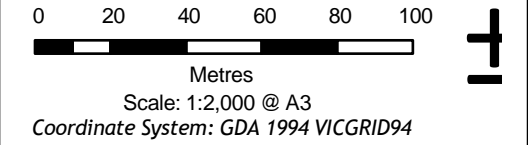
Matter: 35990,  
Date: 14 December 2022 ,  
Prepared for: ML, Prepared by: MK, Last edited by: mknudsen  
Layout: 35990\_F7\_Veg  
Project: P:\35800s\35871\Mapping\  
35990\_GORT\_WT\_Ecology\_Figures.aprx





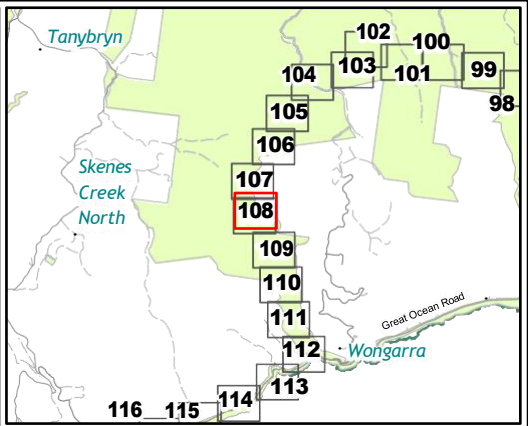
- Legend**
- Assessment corridor - Unassessed
- Trail alignment**
- New Walking Trail

**Figure 7.108 Vegetation loss in the Assessment area**




Matter: 35990,  
Date: 14 December 2022 ,  
Prepared for: ML, Prepared by: MK, Last edited by: mknudsen  
Layout: 35990\_F7\_Veg  
Project: P:\35800s\35871\Mapping\  
35990\_GORT\_WT\_Ecology\_Figures.aprx






**Legend**


 Assessment corridor - Unassessed

**Trail alignment**

 New Walking Trail

**Figure 7.109 Vegetation loss in the Assessment area**


0 20 40 60 80 100



Metres

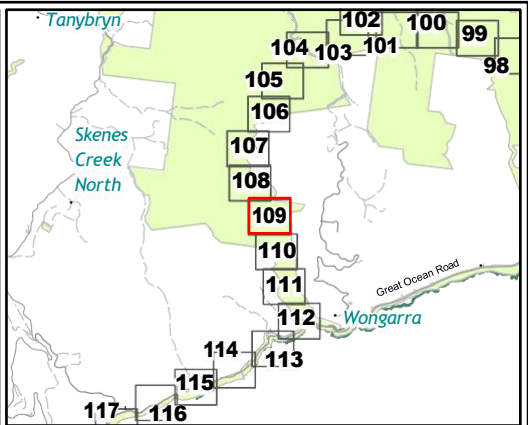
Scale: 1:2,000 @ A3



Coordinate System: GDA 1994 VICGRID94



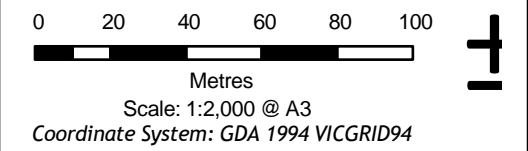
Matter: 35990,  
Date: 14 December 2022 ,  
Prepared for: ML, Prepared by: MK, Last edited by: mknudsen  
Layout: 35990\_F7\_Veg  
Project: P:\35800s\35871\Mapping\  
35990\_GORT\_WT\_Ecology\_Figures.aprx





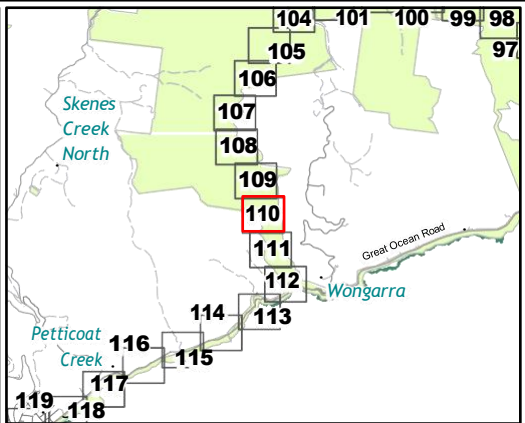
- Legend**
-  Assessment corridor - Unassessed
  - Trail alignment**
    -  New Walking Trail

**Figure 7.110 Vegetation loss in the Assessment area**



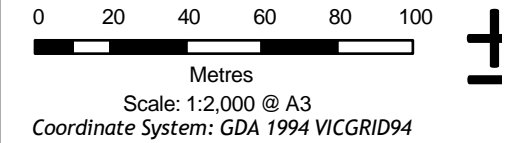
Matter: 35990,  
Date: 14 December 2022 ,  
Prepared for: ML, Prepared by: MK, Last edited by: mknudsen  
Layout: 35990\_F7\_Veg  
Project: P:\35800s\35871\Mapping\  
35990\_GORT\_WT\_Ecology\_Figures.aprx





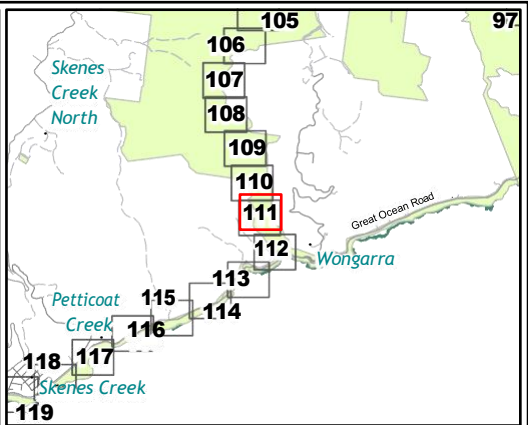
- Legend**
- Assessment corridor - Unassessed
- Trail alignment**
- New Walking Trail



**Figure 7.111 Vegetation loss in the Assessment area**



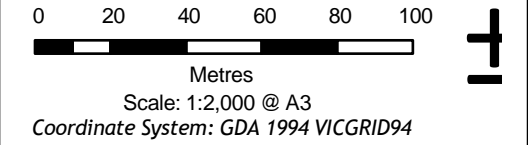
Matter: 35990,  
Date: 14 December 2022 ,  
Prepared for: ML, Prepared by: MK, Last edited by: mknudsen  
Layout: 35990\_F7\_Veg  
Project: P:\35800s\35871\Mapping\  
35990\_GORT\_WT\_Ecology\_Figures.aprx



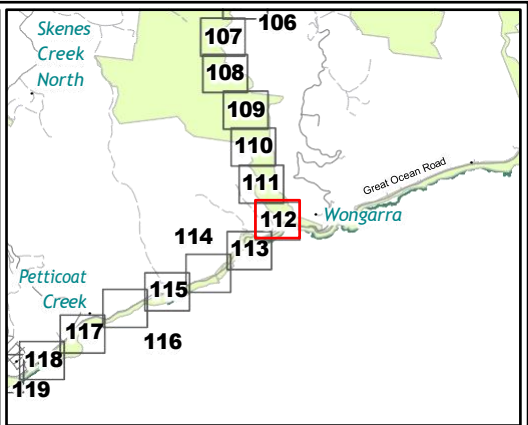





- Legend**
-  Assessment corridor - Unassessed
  - Trail alignment**
    -  New Walking Trail

**Figure 7.112 Vegetation loss in the Assessment area**

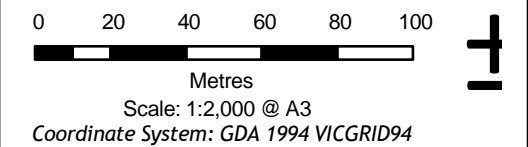




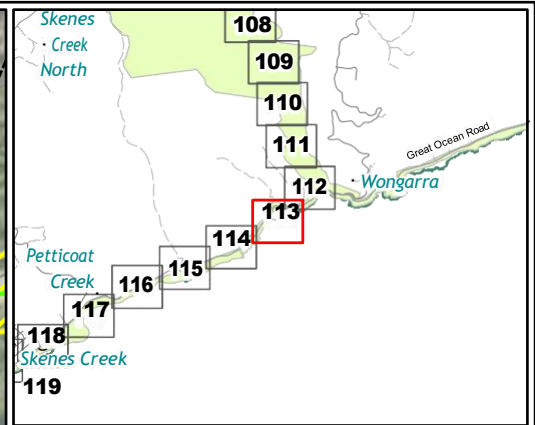


- Legend**
-  Assessment corridor - Unassessed
- Trail alignment**
-  New Walking Trail
  -  Other


**Figure 7.113 Vegetation loss in the Assessment area**









**Legend**

 Assessment corridor - Unassessed

**Trail alignment**

 Beach/Rock Shelf

 Other


**Figure 7.114 Vegetation loss in the Assessment area**

0 20 40 60 80 100

Metres

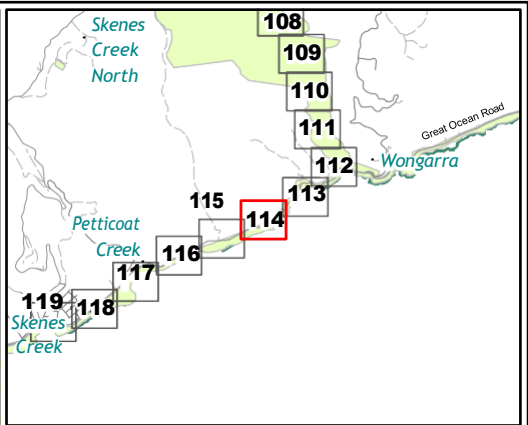
Scale: 1:2,000 @ A3

Coordinate System: GDA 1994 VICGRID94



Matter: 35990,  
Date: 14 December 2022 ,  
Prepared for: ML, Prepared by: MK, Last edited by: mknudsen  
Layout: 35990\_F7\_Veg  
Project: P:\35800s\35871\Mapping\  
35990\_GORT\_WT\_Ecology\_Figures.aprx





**Legend**

Assessment corridor - Unassessed

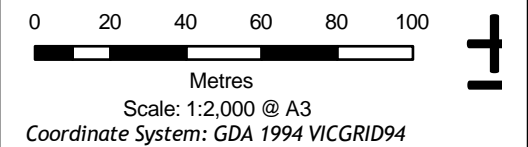
**Trail alignment**

Beach/Rock Shelf

Existing Walking Trail

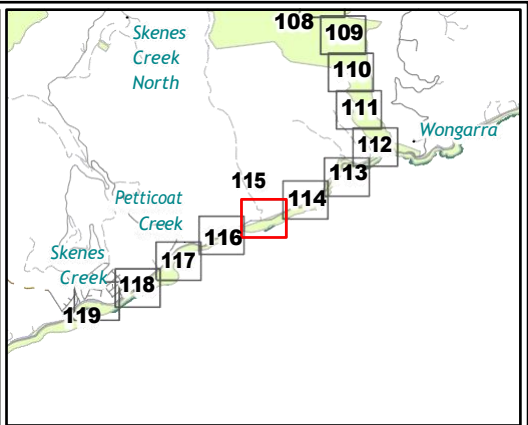
Other

**Figure 7.115 Vegetation loss in the Assessment area**



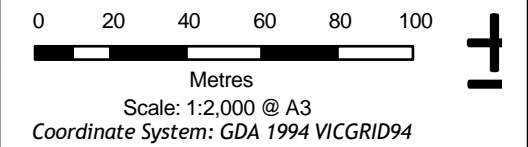
Matter: 35990,  
Date: 14 December 2022 ,  
Prepared for: ML, Prepared by: MK, Last edited by: mknudsen  
Layout: 35990\_F7\_Veg  
Project: P:\35800s\35871\Mapping\  
35990\_GORT\_WT\_Ecology\_Figures.aprx



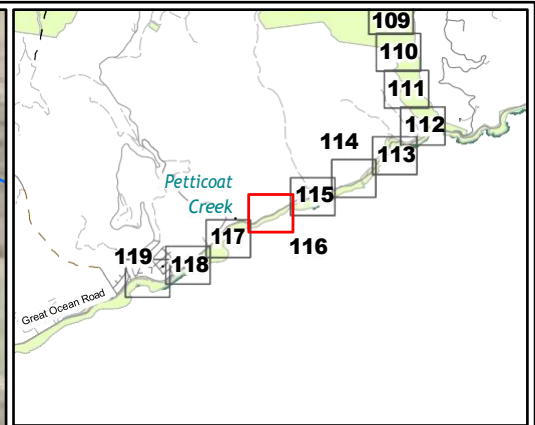




- Legend**
- Assessment corridor - Unassessed
  - Trail alignment**
    - Beach/Rock Shelf
    - Existing Walking Trail
    - Other

**Figure 7.116 Vegetation loss in the Assessment area**

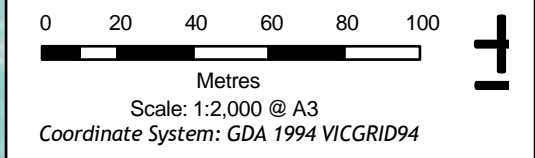




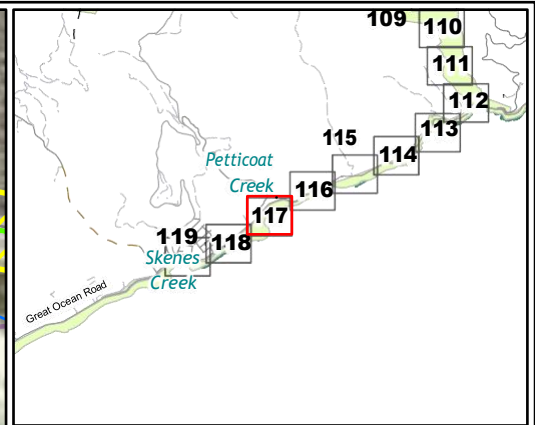


- Legend**
-  Assessment corridor - Unassessed
  - Trail alignment**
  -  Other

**Figure 7.117 Vegetation loss in the Assessment area**

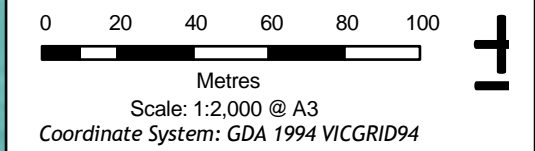




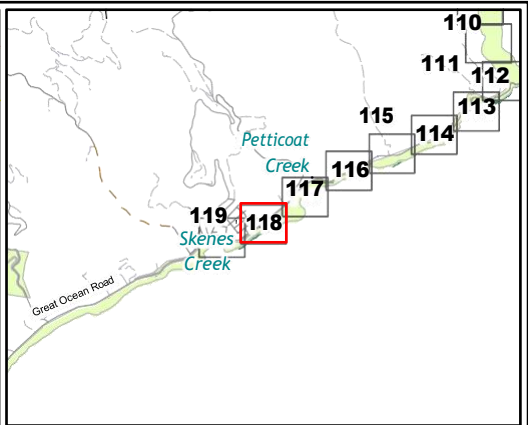





- Legend**
- Assessment corridor - Unassessed
  - Trail alignment**
    - Beach/Rock Shelf
    - Existing Walking Trail
    - New Walking Trail
    - Other

**Figure 7.118 Vegetation loss in the Assessment area**

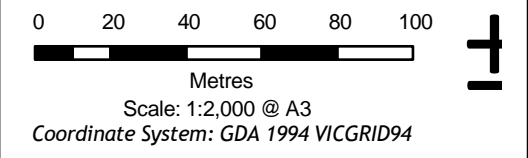




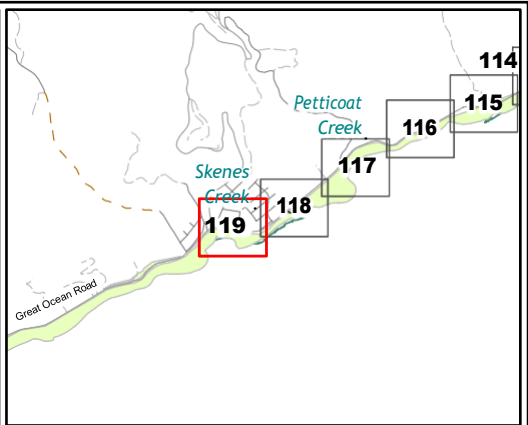


- Legend**
-  Assessment corridor - Unassessed
  - Trail alignment**
  -  New Walking Trail
  -  Other


**Figure 7.119 Vegetation loss in the Assessment area**








**Legend**

 Assessment corridor - Unassessed

**Trail alignment**

 Other

**Figure 7.120 Vegetation loss in the Assessment area**

0 20 40 60 80 100  
Metres  
Scale: 1:2,000 @ A3  
Coordinate System: GDA 1994 VICGRID94



Matter: 35990,  
Date: 14 December 2022 ,  
Prepared for: ML, Prepared by: MK, Last edited by: mknudsen  
Layout: 35990\_F7\_Veg  
Project: P:\35800s\35871\Mapping\  
35990\_GORT\_WT\_Ecology\_Figures.aprx