

Character Area 2.4
Fertile Valleys

2.4 FERTILE VALLEYS

Character Area 2.3 is a small area defined by the fertile valley of the Werribee River. The patchwork of vivid colours, patterns and textures of the market gardens creates a unique sense of place.

The lush valley floor is surrounded by steep rises which are partially tree covered. Properties both nestle within the valley floor and occasionally they sit atop the steep valley walls, often screened by tree planting, however a number stand out quite boldly on the exposed landscape.

This is a highly modified landscape and vegetation is mixed with productive trees, cropping and some native vegetation on the valley walls.

Key Features

- Fertile valley floor
- Steep valley walls
- Market gardens
- Small scale cropping

Settlements

- Bacchus Marsh (part)



The fertile valley floor of the Werribee River



Cropping on Bacchus Marsh Road



The colourful patchwork of cropping contrasts in texture and colour with the partially tree'd valley walls

Figure 1 Fertile Valleys Overview

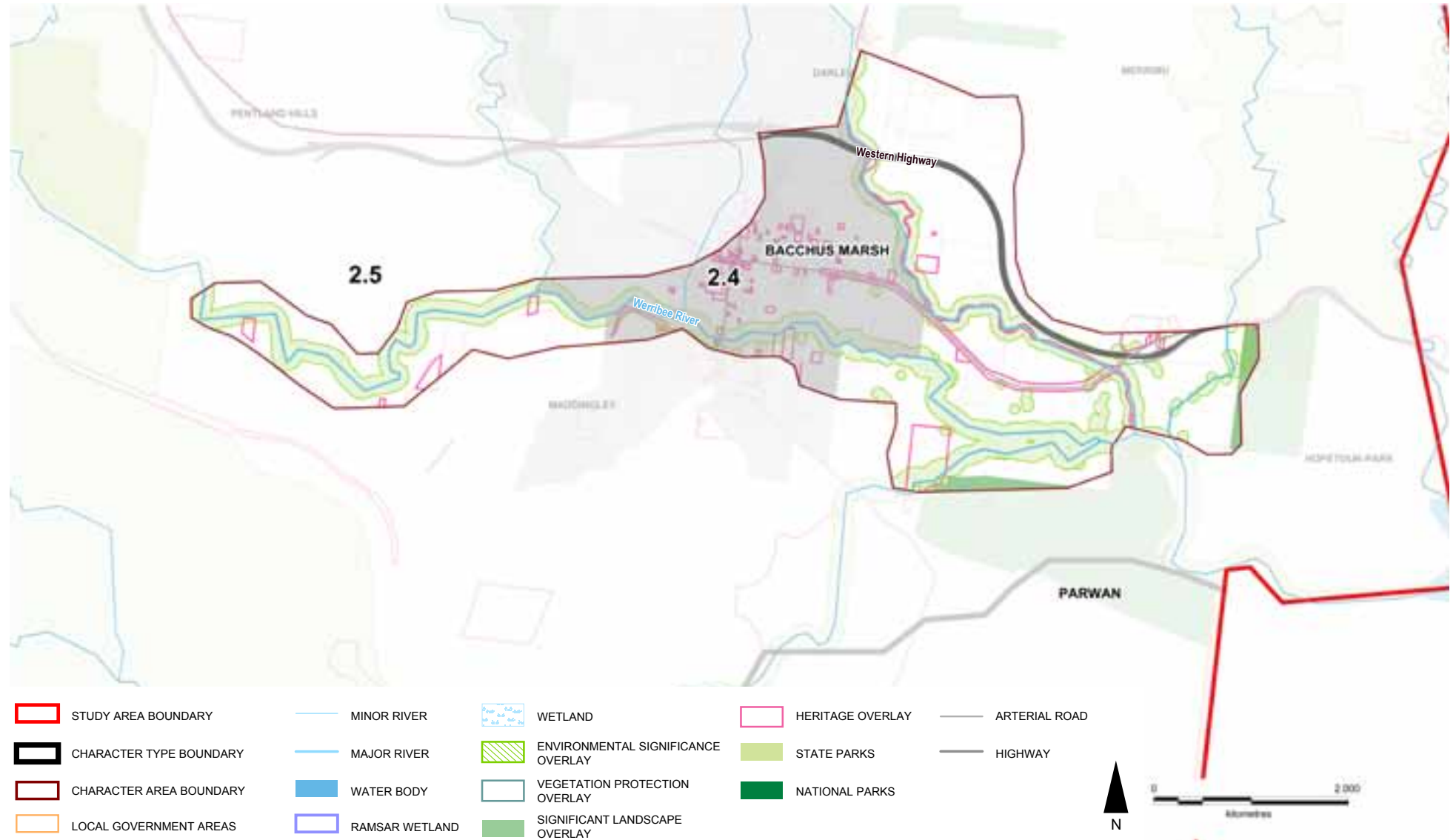


Figure 2 Fertile Valleys Landform

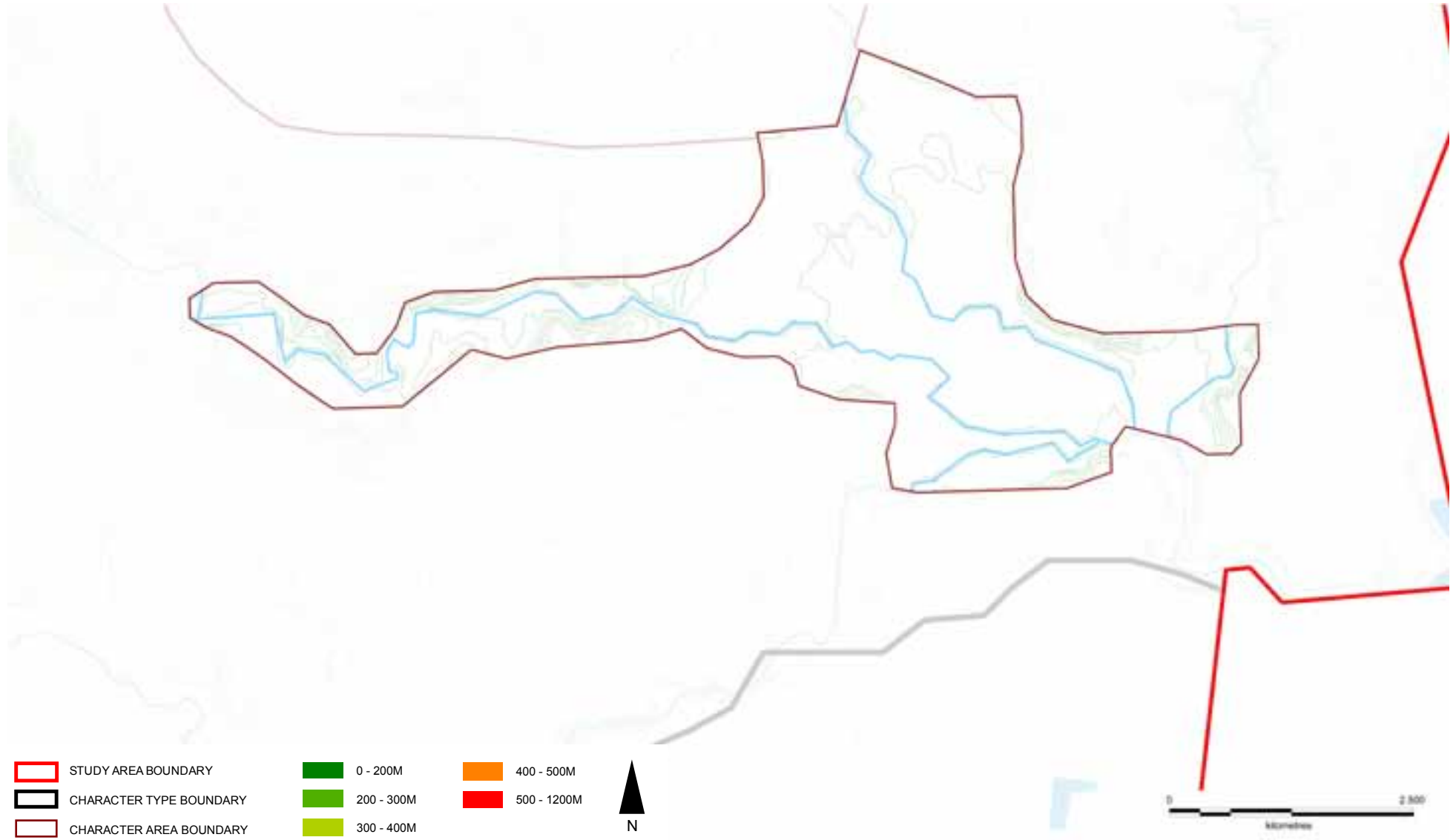


Figure 3 Fertile Valleys Aerial



PATTERN OF VIEWING

The main viewing corridors for this Character Area are:

- The Western Freeway
- Bacchus Marsh Road
- The Werribee Vale Road
- Woolpack Road

The Western Freeway allows panoramic views across the colourful patchwork of cropping on the valley floor. Travelling west, views open up dramatically. The colours and textures of the Character Area contrast with the cleared open plains.

Bacchus Marsh Road with its distinctive avenue of honour cuts through the valley floor, allowing medium range views across the market gardens. Views terminate at steep valley walls.

The Werribee Vale road snakes alongside the Werribee River and creates an intimate viewing experience. Views are enclosed by the valley walls with colourful cropping and properties dotted throughout the foreground.



Looking north on Bacchus Marsh Road towards the colourful patchwork of cropping



Market gardens sit adjacent to the Western Freeway.



Looking south on Woolpack Road over ploughed fields



Looking west on The Werribee Vale Road across the fertile valley floor of the Werribee



Tree planting creates a more intimate viewing experience on Werribee Vale Road

LANDSCAPE VALUES

Historic

- Bacchus Marsh Aboriginal Reserve, once set aside for Aboriginal use
- The stone bridge over the Djerriwarrh Creek was built by Irish settlers in the 1850s to assist with the passage to the goldfields and is included in the Heritage Overlay (HO12)

Environmental/Scientific

- River Red Gums, the oldest living natural heritage of Bacchus Marsh, striking feature of the Bacchus Marsh Valley, valuable source of food & habitats, protected by Moorabool ESO8

LANDSCAPE PROTECTION & MANAGEMENT

Planning Scheme Policies & Controls

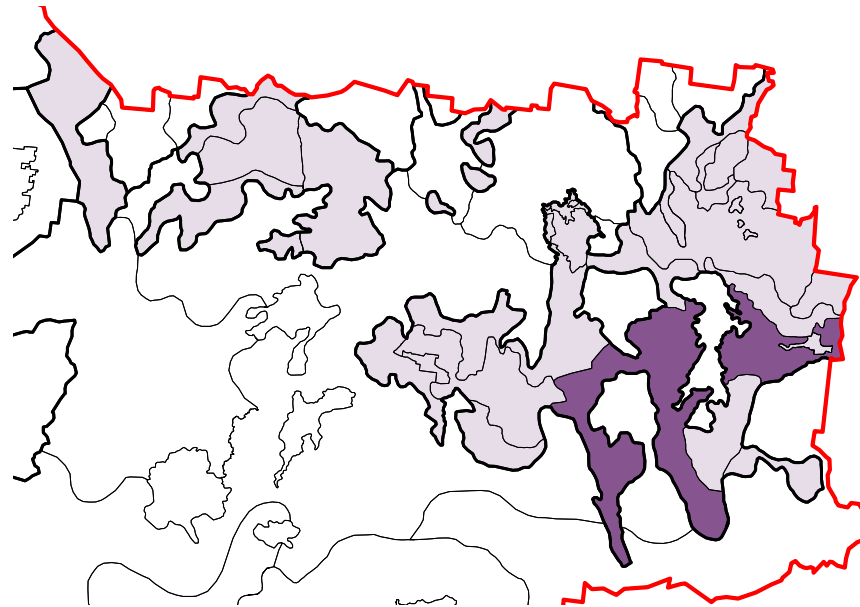
Only the Moorabool Planning Scheme applies to this Character Area.

Key Zones

- FZ
- RLZ at Bacchus Marsh

Key Overlays

- ESO2: Waterway Protection
- ESO8: River Red Gums in the Bacchus Marsh Valley
- HO10, HO14, HO16, HO47, HO56, HO57, HO83, HO96, HO145, HO173, HO175, HO176
- DPO2: Hopetoun Park Estate
- DPO3: West Maddingley
- DDO2: Visual Amenity & Building Design
- DDO3: National Route 8 (western Freeway/Highway) Environs
- EAO
- PAO1: Western Freeway, Realignment



Character Area 2.5
Plateaus & Gorges

2.5 PLATEAUS & GORGES

This Character Area is defined by its dramatic, often surprising topography of flat plateaus incised by deep river valleys and gorges.

This topography is most spectacular around the Werribee Gorge National Park and Lal Lal Gorge where flat, often cleared, plateaus are dissected by deep gorges which appear suddenly as the landscape is crossed.

To the west and south the topography becomes less intense as it joins to the Victorian Volcanic Plain, with river valleys cutting through a more undulating landscape.

Key Features

- The dramatic topography of deep gorges and flat plateaus
- River valleys
- Areas of State Forest
- Undeveloped character

Settlements

- Meredith (part)
- Bacchus Marsh (part)
- Anakie



Moorabool River dissects the landscape



Dwelling nestles at the base of a valley



Werribee Gorge



Lal Lal Reservoir



Within Enfield Forest

Figure 1 Plateaus & Gorges Overview

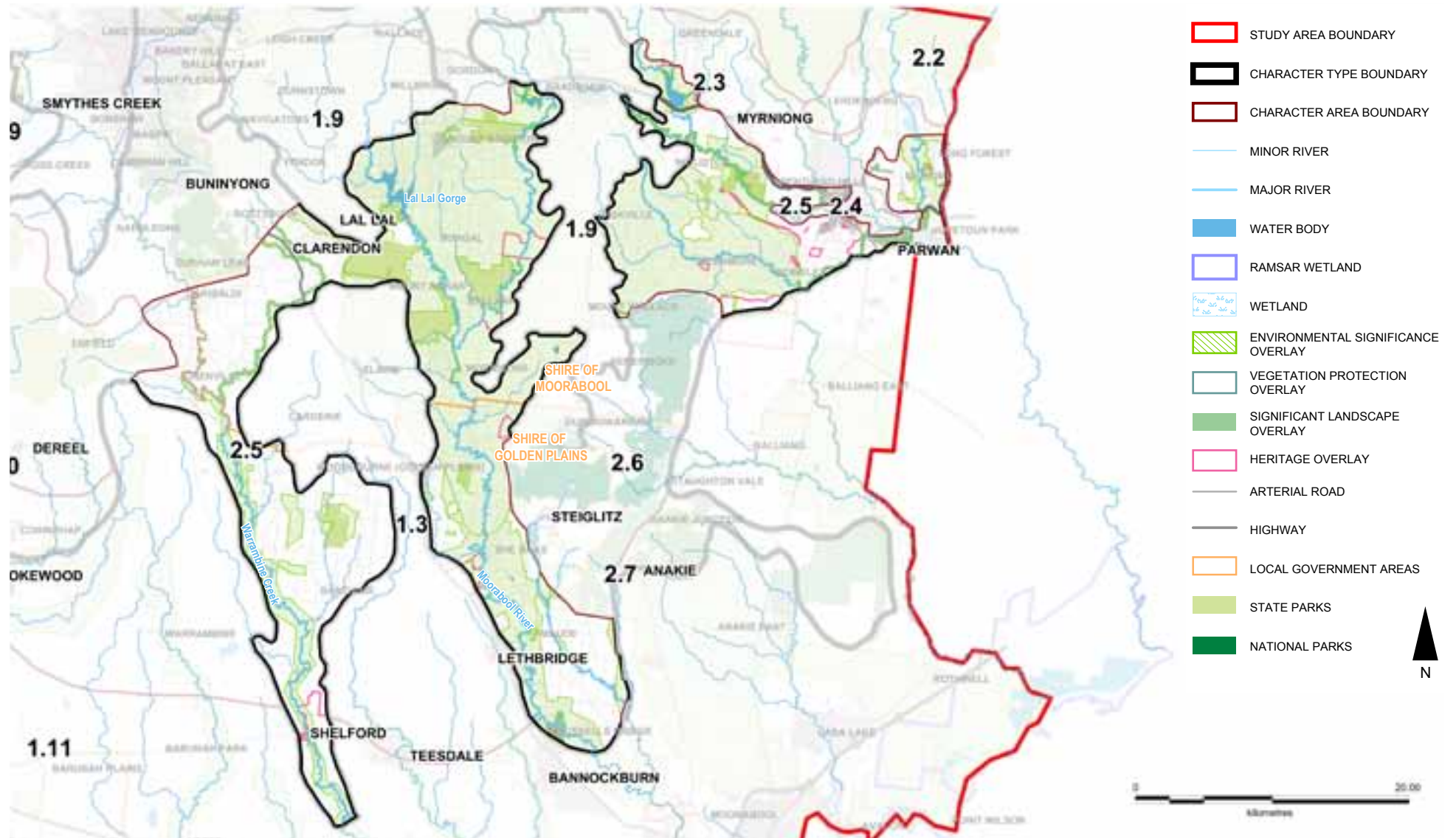


Figure 2 Plateaus & Gorges Landform

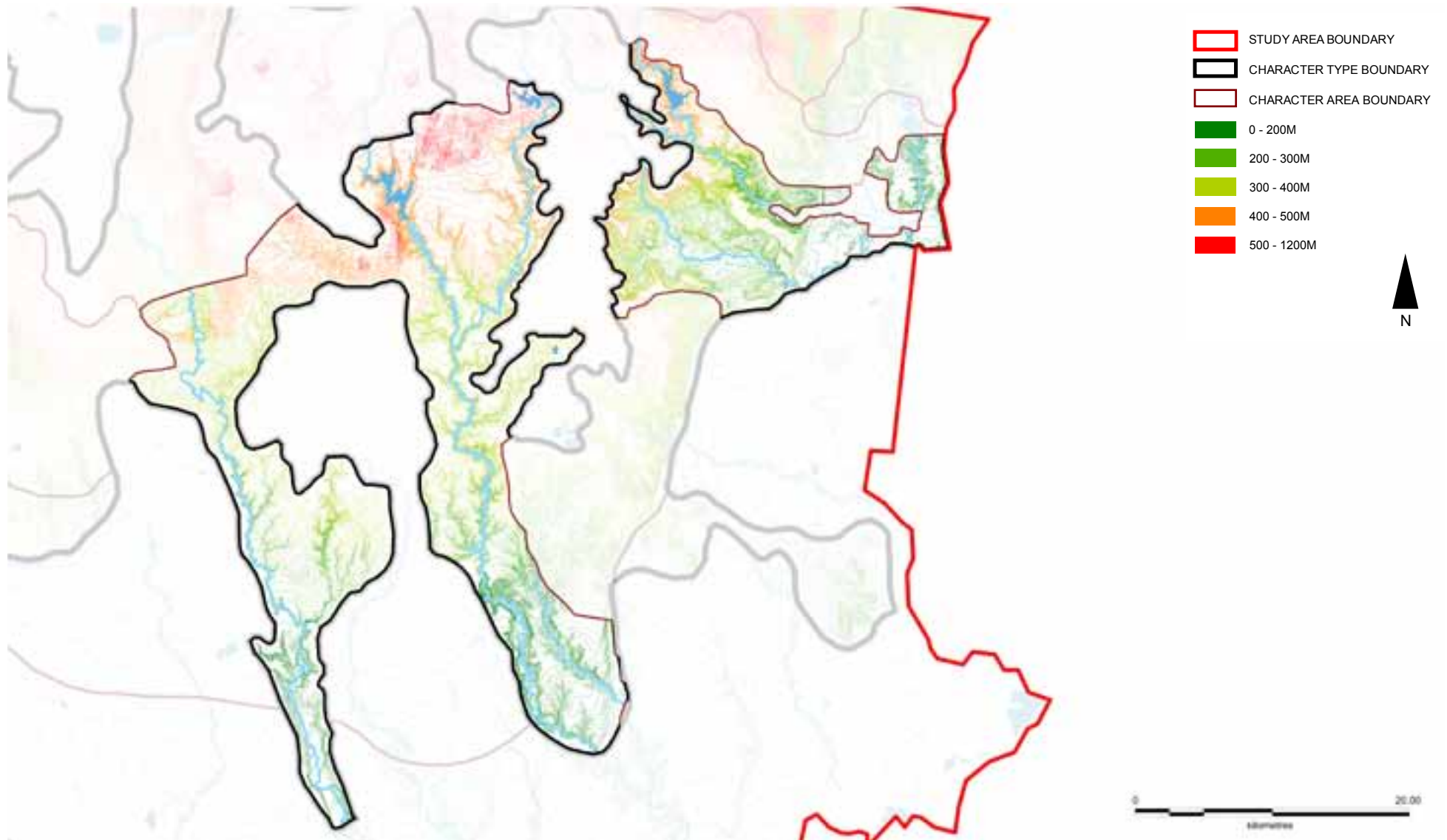
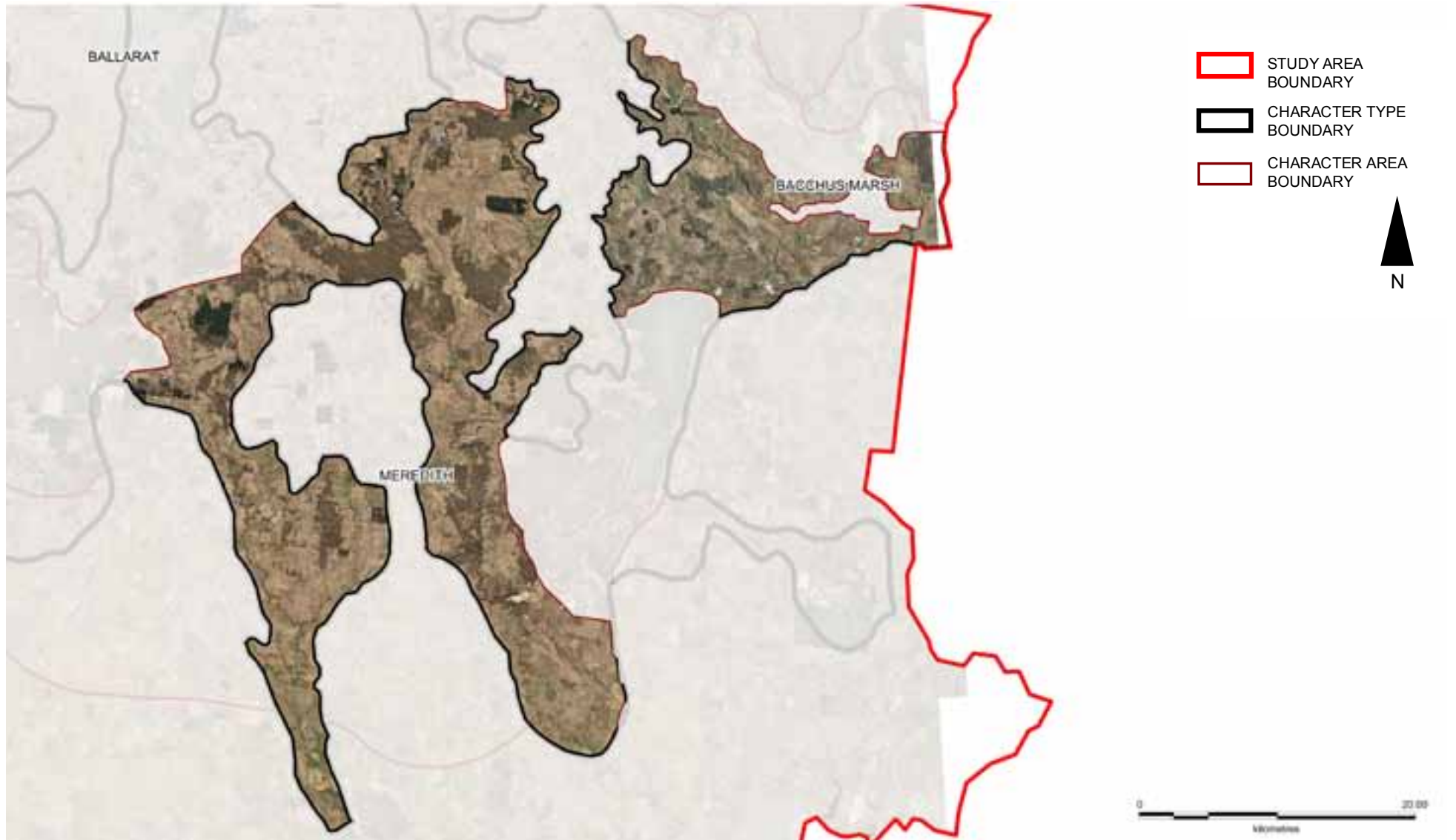


Figure 3 Plateaus & Gorges Aerial



PATTERN OF VIEWING

Numerous minor roads cut across this Character Area allowing some spectacular views, viewing corridors include:

- Western Freeway
- Ironbark Road
- Meredith - Steiglitz Road
- Elaine-Morrison's Road
- Slate Quarry Road
- Egerton - Ballark Road
- Egerton - Bungeeltap Road
- Maude - Sheoaks Road

Views in this Character Area vary dramatically from long ranging views over flat plateaus to closed views contained by the valley walls.

Gorges seem to appear from nowhere, in some locations invisible on the horizon. Other viewing corridors allow for sweeping views across the gorges and valleys.



View across the Parwan Valley



Roads quickly descend as views change from long ranging over flat plateau to narrow, contained by valley walls on the Elaine-Morrison's Road



View of the Lal Lal Gorge and Falls from a dedicated viewing platform



LANDSCAPE VALUES

Historic

- Evidence of Aboriginal use
 - at Werribee Gorge State Park including grinding grooves, scarred trees & surface scatters
 - inland middens near Meredith
- Werribee Gorge
 - listed by the National Trust as state significant for its geological importance, educational value for the study of earth sciences and native state of vegetation
 - listed on the Register of the National Estate for its environmental significance
- State significant Parwan Valley, a spectacular geomorphological landform, listed by the National Trust
- Locally significant Long Forest Mallee, Long Forest listed by the National Trust for its community of Mallee species

Environmental/Scientific

- Hilltops & ridge lines encircling the township of Bacchus Marsh, protected by Moorabool SLO1
- Werribee Gorge State Park
 - protected area on the IUCN list Category III (Natural Monument or Feature)
 - protected by National Parks Act 1975, Schedule 2B
- Werribee Gorge, protected by Moorabool ESO3
 - extensive outcrops of Permian sediments and exposed sub-glacial topography
 - almost 200m gorge, one of deepest in Victoria, unique long cliff-walled sectors
 - Protected areas on the IUCN list
 - Lal Lal Falls Scenic Reserve, Category III (Natural Monument or Feature)
 - Cargerie I42 & I43, Gorong I106 & Moreep I44 Bushland Reserves, Category IV (Habitat/Species Management Area)
- River Red Gums, the oldest living natural heritage of Bacchus Marsh, striking feature of the Bacchus Marsh Valley, valuable source of food and habitats
- Long Forest
 - flora & fauna reserve, protected area on the IUCN list Category IA (Strict Nature Reserve)
 - protected by ESO3 because it supports Melton Mallee, a unique vegetation community of national significance, thought to be thousands of years old

Social

- Spectacular views in Werribee Gorge State Park, tourist attraction
- Challenging rock climbing opportunities close to Melbourne at Werribee Gorge State Park
- Fred Williams, a famous Australian artist painted a series of pictures of Werribee Gorge

LANDSCAPE PROTECTION & MANAGEMENT

Planning Scheme Policies & Controls

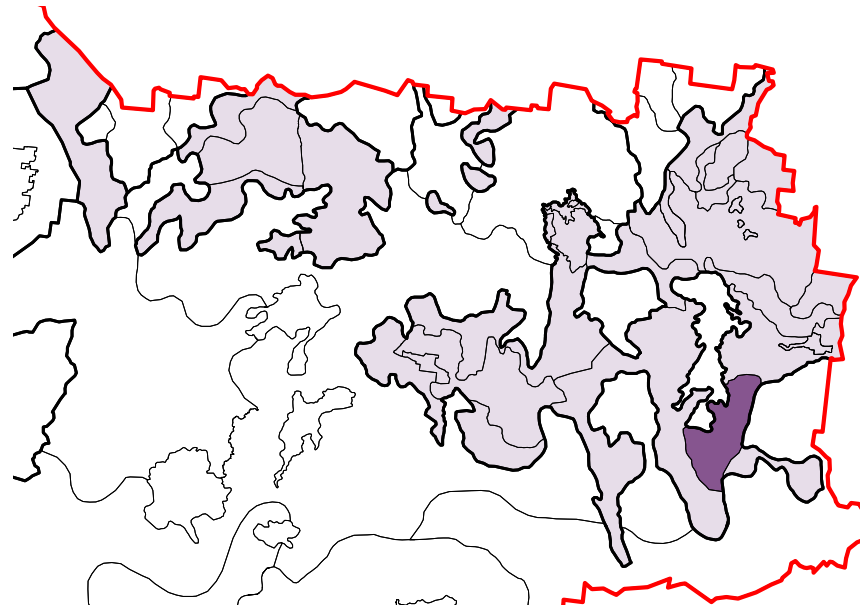
This Character Area is subject to the Golden Plains and Moorabool Planning Schemes.

Key Zones

- FZ
- PCRZ
- RLZ at Lal Lal, Long Forest, Myrniong, Mount Egerton & Pentland Hills
- RCZ (Golden Plains only)
- RAZ (Golden Plains only)
- PUZ

Key Overlays

- Golden Plains SLO2: Russell's Bridge Landscape
- Moorabool SLO1: Scenic Hilltops & Ridge Line Areas
- Golden Plains ESO1: Barown Water Supply Catchment
- Golden Plains ESO2: Watercourse Protection
- Golden Plains ESO3: Mount Misery Creek, Surface Hill – Smythesdale, Klein & Swanston Road Area, Dereel, Swamp Road – Dereel, Yarrowee Creek, Teesdale Reserve, Moorabool Valley, Sutherland Creek, Meredith, Steiglitz
- Moorabool ESO1: Proclaimed Water Catchment Areas
- Moorabool ESO2: Waterway Protection
- Moorabool ESO3: Long Forest & Werribee Gorge
- Moorabool ESO5: Ballan Sewage Treatment Plant Buffer Area
- Moorabool ESO8: River Red Gums in the Bacchus Marsh Valley
- HO including several Homesteads
- Golden Plains VPO2: Bushland Reserves & Roadside Vegetation Areas
- WMO / BMO
- Golden Plains FO & LSIO
- Golden Plains SMO
- Moorabool DDO1: Bences Road Area (protecting visual and aesthetic values of skyline when viewed from Bacchus Marsh Valley)
- Moorabool DDO2: Visual Amenity & Building Design
- Moorabool DDO3: National Route 8 (Western Freeway / Highway) Environs
- Moorabool RO4: Rowsley Crown Township



Character Area 2.6
Brisbane Ranges

2.6 BRISBANE RANGES

The Brisbane Ranges National Park forms its own Character Area within the Uplands Type.

This is an area of rugged rocky gorges with thick vegetation cover. Much of this is coppiced, as the forest has re-grown from a history of timber cutting. While there are some residential dwellings on the outskirts, overall the area displays an undeveloped character. The area is renowned for its large variety of flora and fauna species, and the National Park was declared in 1973.

To the west this Character Area is undulating and easily accessible, to the east gorges and steep ridges create a more rugged and inaccessible terrain. Steiglitz, an old gold mining town, nestles within the National Park and displays numerous characterful buildings.

Key Features

- Carpeted in thick vegetation
- Undeveloped character

Settlements

- Steiglitz



Steiglitz church



Coppiced growth on a foggy day



Coppiced growth on a foggy day

Figure 1 Brisbane Ranges Overview

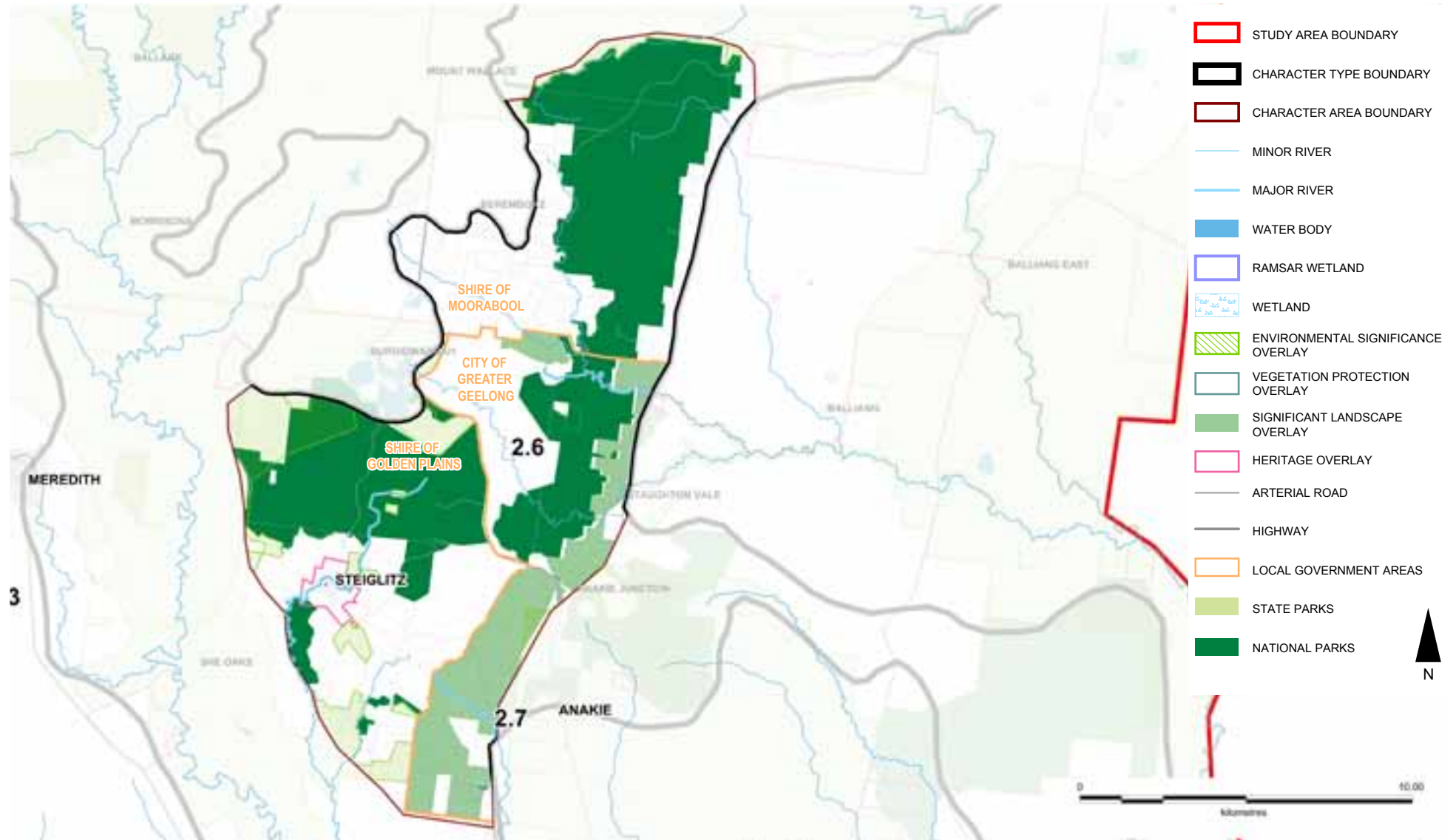


Figure 2 Brisbane Ranges Landform

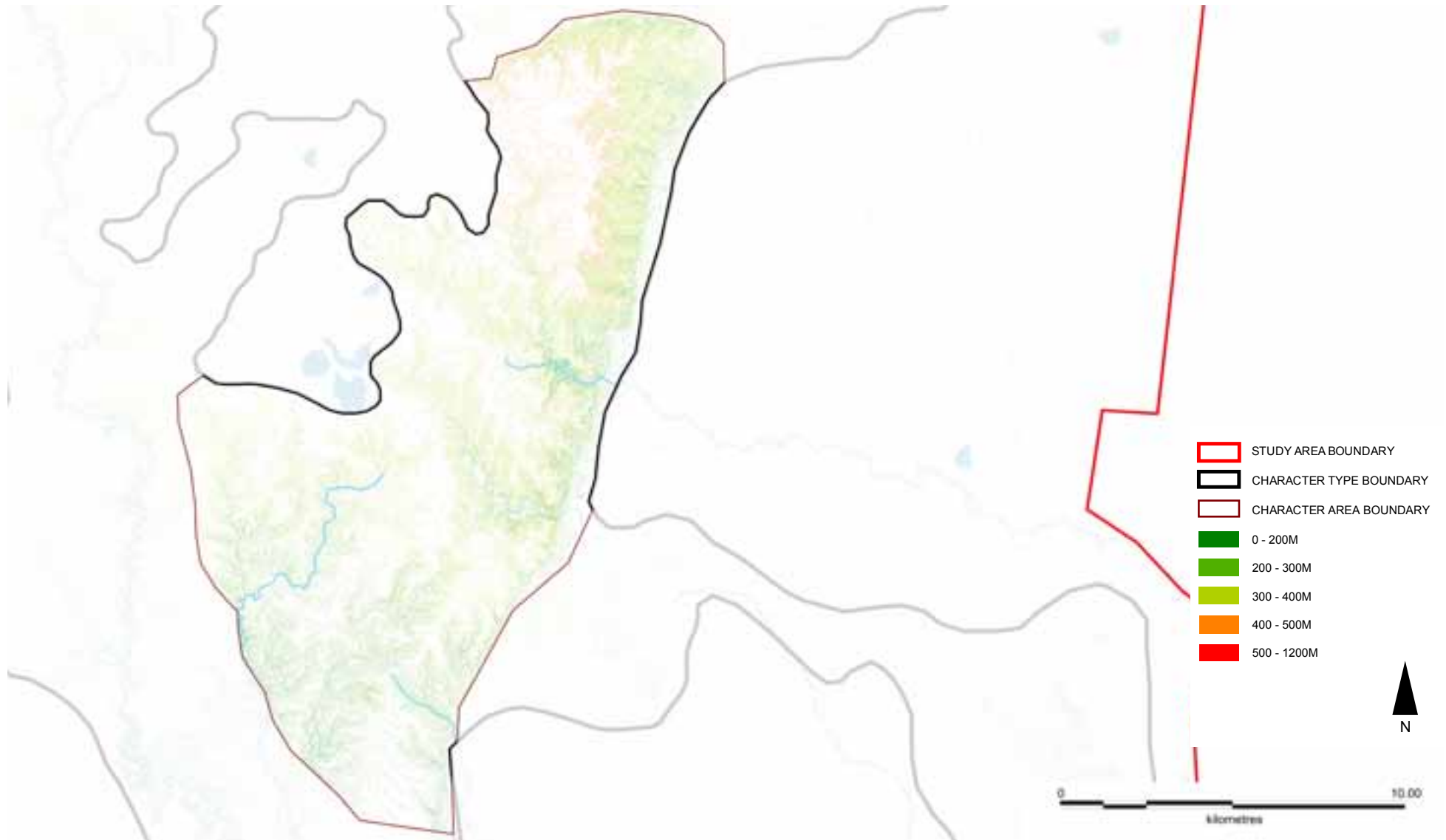
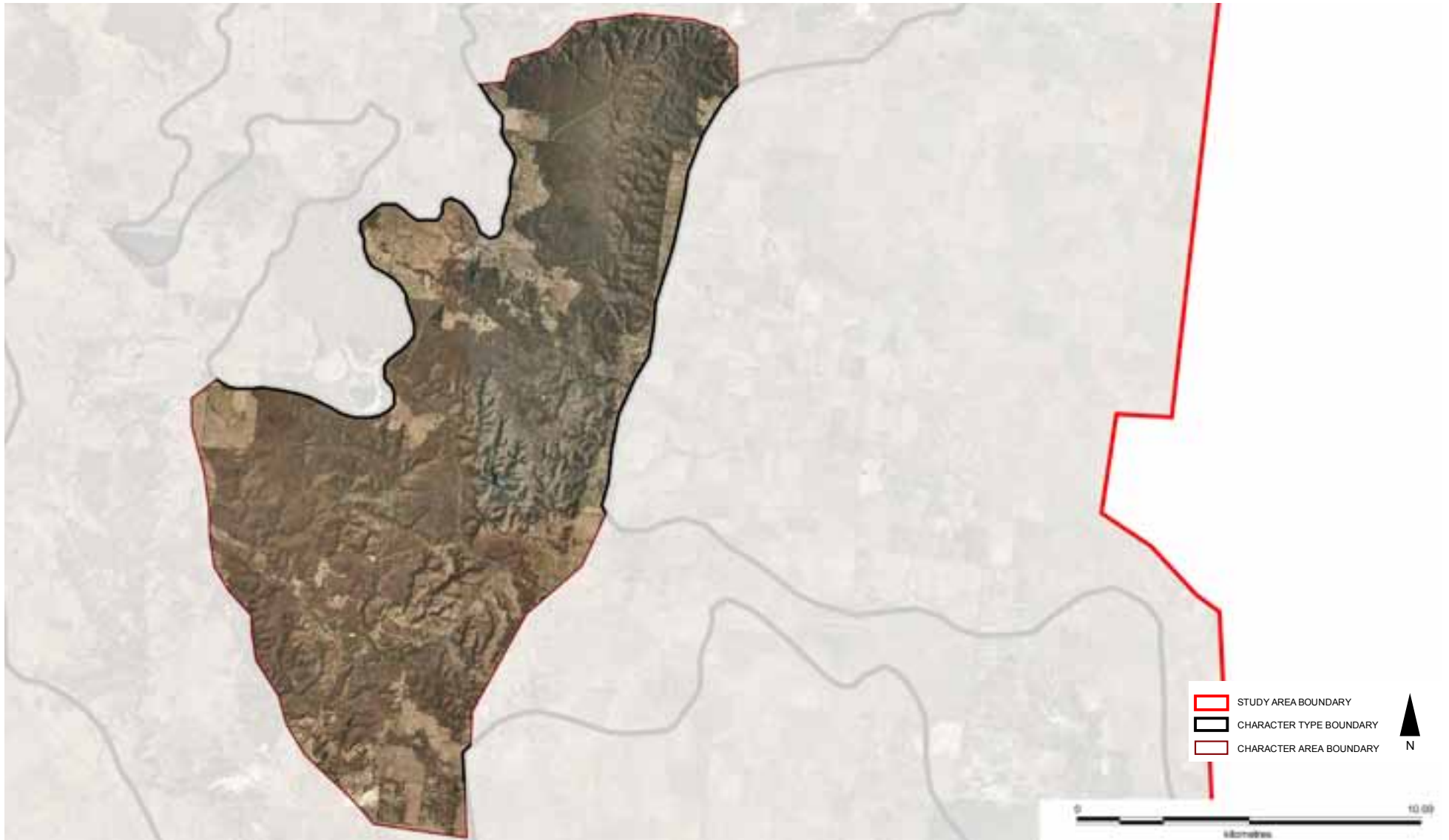


Figure 3 Brisbane Ranges Aerial



PATTERN OF VIEWING

The main viewing corridors for this Character Area are:

- Brisbane Ranges Road
- Ballan-Geelong Road
- Steiglitz Road
- Thompsons Road
- McLeans Highway

From within the Brisbane Ranges Character Area views are generally narrow, contained by thick vegetation. At high points sweeping panoramas are available over the thickly vegetated terrain.

This Character Area can also be viewed from adjacent corridors such as the Bacchus Marsh-Geelong Road and the Staughton Vale Road which offer views for the ranges from a distance, giving an alternative perspective of the landform.



View from within the area on Thompsons Road



View from within the area on the McLean Highway



Looking west towards the Brisbane Ranges from Staughton Vale Road



Looking west from the Bacchus Marsh - Geelong Road the Brisbane Ranges create a dark silhouette against the flat volcanic plain.



Looking over the Brisbane Ranges from a high point within the area

LANDSCAPE VALUES

Historic

- State significant Brisbane Ranges listed by the National Trust due to Rowsley fault's distinguishable escarpment & significant vegetation

Environmental/Scientific

- Small area of Grassland within the Werribee Plains Hinterland in the Victorian Volcanic Plain Bioregion, native vegetation in this bioregion is one of the most depleted in the State including some threatened species on the EPBC list
- Brisbane Ranges National Park
 - protected area on the IUCN list Category II (National Park)
 - protected by National Parks Act 1975, Schedule 2
- Stony Creek (Durdiwarrah) Reference Area
 - protected by Reference Areas Act 1978
 - listed in IUCN's List of Protected Areas, Category IA (Strict Nature Reserve)
- Protected areas on the IUCN list
 - Durdidwarrah Bushland Reserve, Category IV (Habitat/Species Management Area)

LANDSCAPE PROTECTION & MANAGEMENT

Planning Scheme Policies & Controls

This Character Area is subject to the Golden Plains, Greater Geelong and Moorabool Planning Schemes.

Key Zones

- FZ
- PCRZ
- RCZ (except Moorabool)

Key Overlays

- Greater Geelong SLO5: Edges of the Brisbane Ranges and Anakie
- Golden Plains ESO1: Barown Water Supply Catchment
- Golden Plains ESO2: Watercourse Protection
- Golden Plains ESO3: Mount Misery Creek, Surface Hill – Smythesdale, Klein & Swanston Road Area, Dereel, Swamp Road – Dereel, Yarrowee Creek, Teesdale Reserve, Moorabool Valley, Sutherland Creek, Meredith, Steiglitz
- Golden Plains HO16: Brisbane Ranges Nation Park
- Greater Geelong ESO1: Areas of Flora & Fauna Habitat & of Geological & Natural Interest
- Greater Geelong ESO4: Grassland within the Werribee Plains Hinterland
- Moorabool ESO1: Proclaimed Water Catchment Areas
- HO
- Greater Geelong VPO1: Significant Roadsides & Linear Reserves
- WMO / BMO
- Golden Plains LSIO
- Golden Plains SMO
- Moorabool DDO2: Visual Amenity & Building Design

