

## 2.3 ROBERTSON HILL

### Significant Viewing Location

Character Type	2	The Uplands
	1.3	Volcanic Agricultural
	1.6	Volcanic Lakes & Swamps
	2.15	Uplands Interface
	4.14	Eastern Tablelands
	6.1	Grampians Ranges (Gariwerd)
Character Areas visible in view	6.2	Grampians Surrounds

Robertson Hill is located on Watgania Road, just off the Pyrenees Highway between Ararat and Glenthompson. While it is not a formal or designated viewing point, a magnificent viewing opportunity is created at a rise in the landscape. This is part of the very southern tip of the Victorian Uplands.

The view cone on the map opposite describes the view to the south that is visible from the road. Views to the north are blocked by roadside shelterbelt planting.



*View towards Gariwerd (the Grampian Ranges) over Lake Buninjon*



*View towards hills south of Ararat, which is blocked by pine shelterbelts along the north side of the road.*

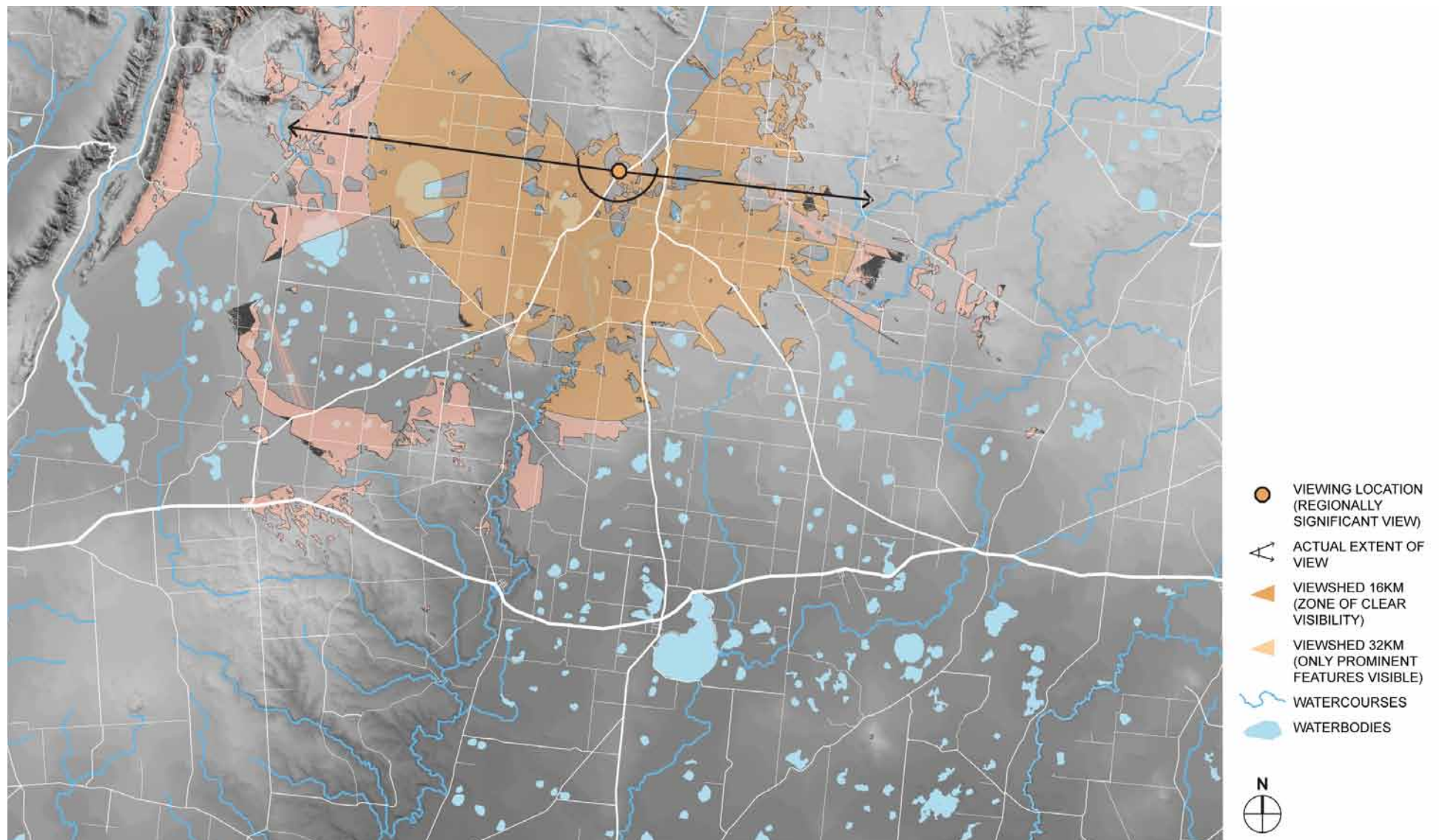
### Overall View Significance Rating: Regional

A detailed significance assessment is provided over the following pages.



*The sweeping 180 degree panorama available from Robertsons Hill over the volcanic plain.*

## Viewshed Map: Robertsons Hill



## Aesthetic Values

AESTHETIC VALUES				
	Source	Description	Aesthetic Values Rating Considerations (i.e. exemplary, iconic, scarce)	Level of Significance
COMPOSITION (STRUCTURE)	Survey	The slight rise in the landscape allows for spectacular, 180° panoramic views from east to west. This broad scene captures the vast expanse of the volcanic plain as viewed from the southern edge of the Uplands. The landscape in the middle and foreground of views features gently undulating, cleared paddocks crisscrossed with exotic shelterbelts and patched with areas of vegetation. The Grampians dominate the horizon to the west, with Lakes Buninjon and Muirhead, and Mount William Swamp visible in the middle-ground. The straight line of Watgania Road draws the eye from the crest of the hill across the landscape to the Grampians. It is a well balanced composition, with the horizontal elements of the lakes, rows of shelter belts and vegetation and the Grampians all featuring at different angles. The northern side of the road features sweeping views to the hills surrounding Ararat, however these are predominantly blocked by a dense row of pine shelterbelt.	This is a breathtaking view that sweeps across the edges of the volcanic plain to Gariwerd silhouetted on the horizon.	High (Regional)
COMPOSITION (VISUAL QUALITIES)	Survey	The climb up Robertson Hill is not particularly spectacular, until the crest is reached and the sweeping panorama suddenly opens out. To the southeast the cleared landscape of the volcanic plain is revealed with its open pastures and shelterbelt planting. A volcanic cone rises on the distant horizon. The lakes shimmer with the reflections of the sky, and are revealed in glints through the surrounding vegetation, which contrast strongly with the dry, grassy pastoral landscape. The Gariwerd silhouette is deep blue and dramatic, with a faint haze softly rising. To the south, the towering turbines of the Glenthompson Wind Farm are visible in a portion of the view.	There is a high level of variety in this view and it captures many features that are iconic to this part of Victoria.	High (Regional)
Overall Aesthetic Significance Rating				Regional

## Other Cultural Landscape Values

OTHER VALUES		
	Source	Description
SOCIAL VALUE	Survey	<p>Robertson Hill is a locally known viewpoint. While not a formal viewing location, it provides a spectacular viewing opportunity of the surrounding area and Gariwerd.</p> <p>Formalisation of this viewing location, with signage, space to pull over and interpretive information, would assist in the appreciation of the rich heritage of the surrounding landscape.</p>
CULTURAL VALUES SIGNIFICANCE RATING		Local



## 3.1 PIONEER LOOKOUT, ARARAT

### Significant Viewing Location

Character Type	3	The Goldfields
	1.3	Volcanic Agricultural
Character Areas visible in view	2.4	Ararat Hills
	2.15	Uplands Interface
	3.3	Central Goldfields
	6.1	The Grampians Ranges
	6.2	The Grampians Surrounds
	5.3	Lake Lonsdale & Surrounds

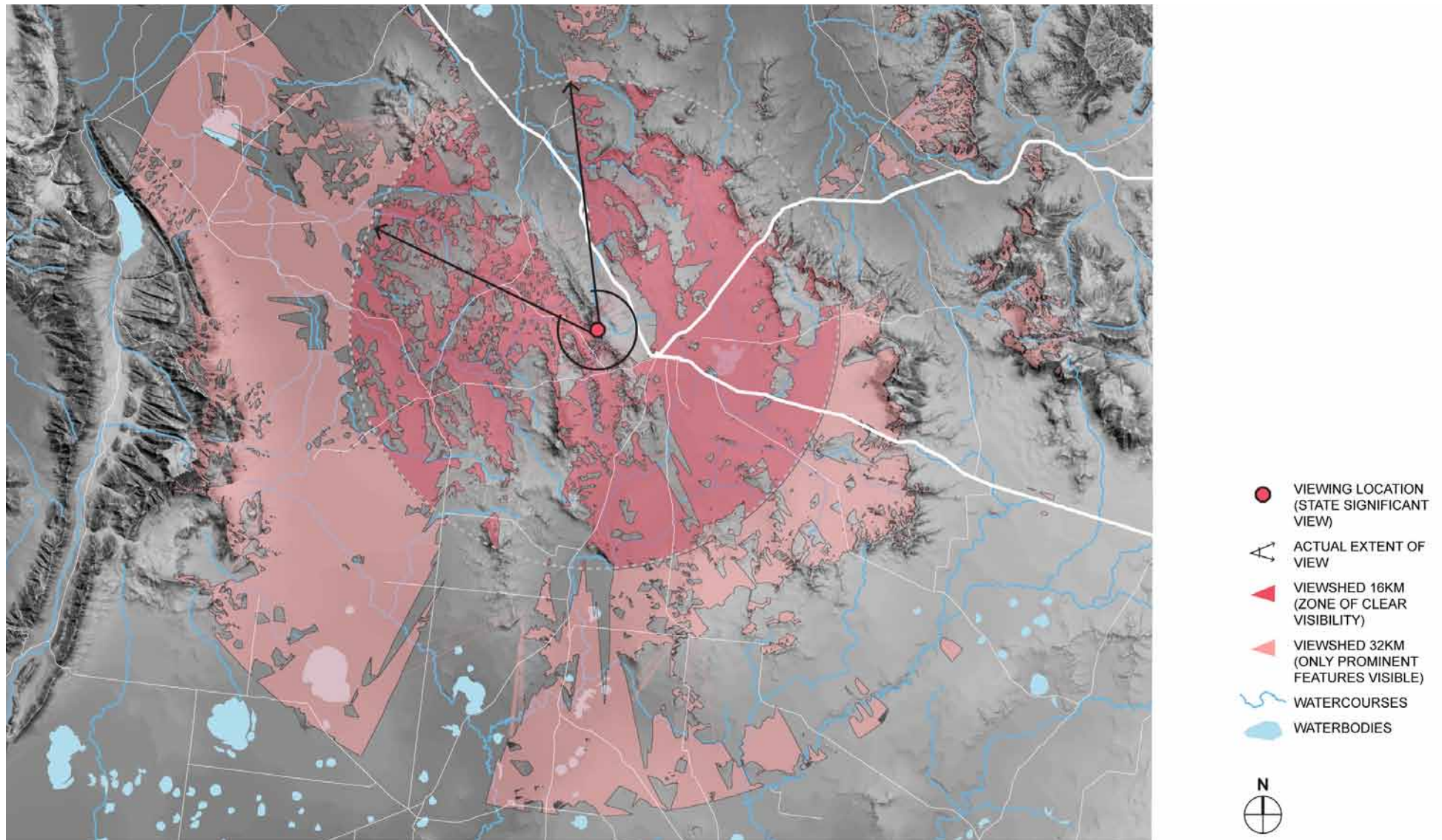
This signposted lookout in the Ararat Regional Park that covers One Tree Hill to the west of the town provides stunning views over the ridges and hills of Ararat, and the landscape between these and the Grampians Ranges in the west.

### Overall View Significance Rating: State

A detailed significance assessment is provided over the following pages.



## Viewshed Map: Pioneer Lookout, Ararat



## Aesthetic Values

AESTHETIC VALUES				
	Source	Description	Aesthetic Values Rating Considerations (i.e. exemplary, iconic, scarce)	Level of Significance
COMPOSITION (STRUCTURE)	Survey	The sharp, crested ridgeline of OneTree Hill in the Ararat Regional Park rises around 250 metres above the surrounding landscape. From a designated viewing point, stunning panoramic views are available that capture a diversity of landscape features. The foreground drops away sharply on all sides, and views are experienced over and through the forested canopy of the land below. To the north, the ridges and folds of the landscape that surrounds Ararat dominate, with the more distant shapes of the Pyrenees Ranges beyond. To the east, the urban areas of Ararat sit nestled within medium to heavy tree cover with the distinctive silhouettes of Mounts Langhi Ghiran and Buangor layered on the horizon. To the south east, the landscape flattens out, and the turbines of Chalicum Hills Wind Farm are visible before the closer hills of Mount Chalambar and Mount Ararat fill the middle ground. Past these, flatter land stretches out before the jagged formation of Gariwerd (the Grampian Ranges) which rises up to dominate the western horizon.	This view provides an outlook over the iconic setting of Ararat with its surrounding ridges of hills. It also provides an exemplary view of how the Grampians Ranges rise dramatically out from the flat surrounding landscape.	Exceptional (State)
COMPOSITION (VISUAL QUALITIES)	Survey	This is a stunning view of textures, moods and colours. The ranges of Gariwerd have a blue tinge, and are often dramatically shrouded in cloud. The pastoral land in the middle ground is dotted with River Red Gums and areas of remnant vegetation create a patchwork that intensifies as it gets closer to the ranges. This contrasts with the cleared hills and ridges surrounding Ararat, making them stand out boldly. The folds, gullies and knobbly outcrops create a highly textured and visually exciting landscape which is often exacerbated by concentrations of dense vegetation at the low points.	The range of contrasting textures and variety of topographic features make this a rare and exciting viewing opportunity.	Exceptional (State)
Overall Aesthetic Significance Rating				State



## Other Cultural Landscape Values

OTHER VALUES		
	Source	Description
SOCIAL VALUE	Tourist Information	<p>The Ararat Pioneer Lookout is extensively promoted through tourist information and is clearly signposted.</p> <p>The memorial acknowledges the contribution of the early pioneers of the area.</p>
ENVIRONMENTAL VALUE	Tourist Information	The lookout provides an important opportunity for viewing the surrounding natural features and appreciation of the area's environmental qualities.
HISTORICAL VALUE	Desktop Research	The name 'One Tree Hill' is evidence of the gold rush history of the area and the heavy clearing of forest that occurred.
CULTURAL VALUES SIGNIFICANCE RATING		Regional



## 4.1 MICKLE LOOKOUT, CASTERTON

### Significant Viewing Location

Character Type      4      Rolling Tablelands

Character Areas  
visible in view      4.2      Cleared Tablelands

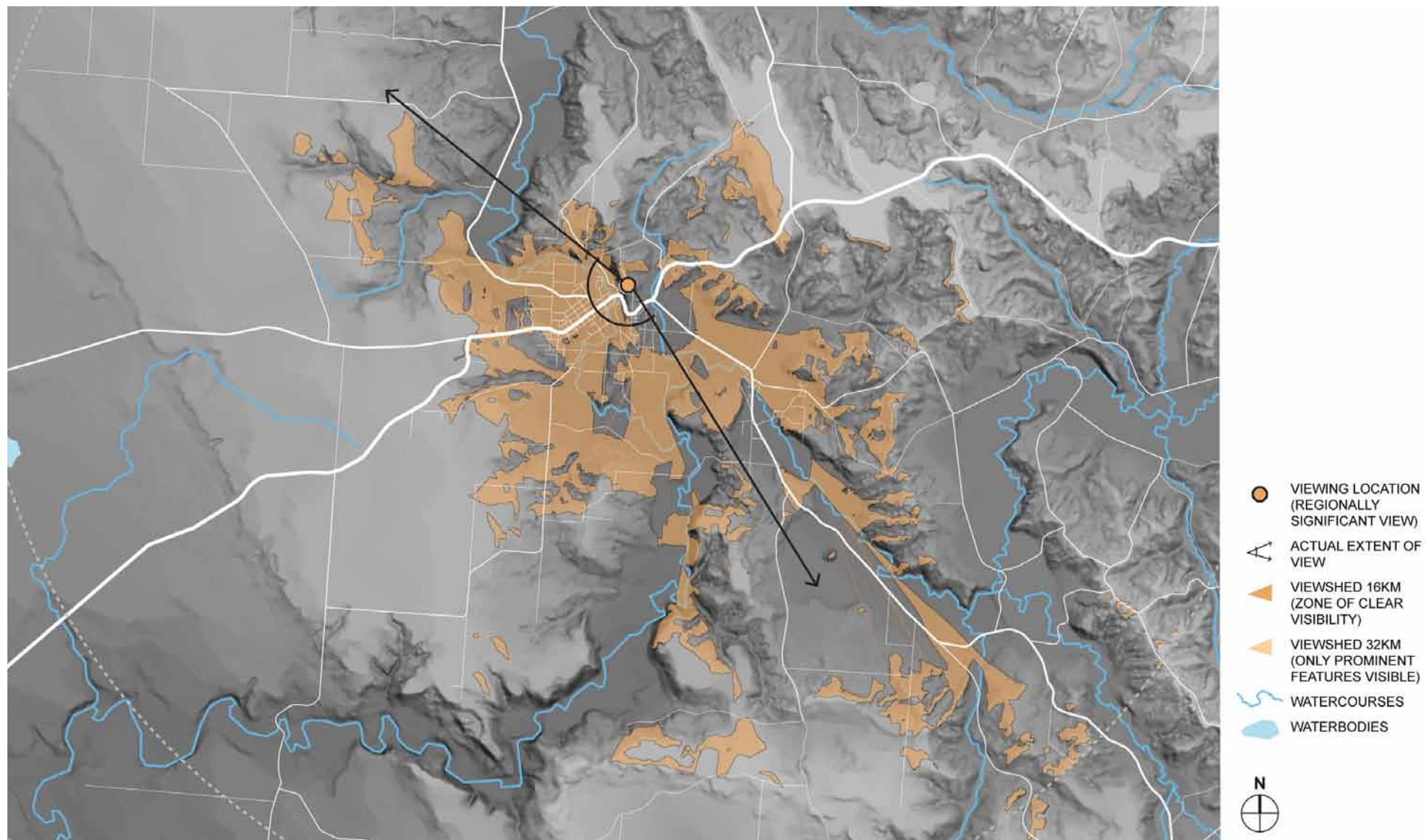
The Mickle Lookout on a hill above Casterton is a well publicised and easily accessible viewing location.

### Overall View Significance Rating: Regional

A detailed significance assessment is provided over the following pages.



## Viewshed Map: Mickle Lookout, Casterton



## Aesthetic Values

AESTHETIC VALUES				
	Source	Description	Aesthetic Values Rating Considerations (i.e. exemplary, iconic, scarce)	Level of Significance
COMPOSITION (STRUCTURE)	Survey	The Mickle Lookout is located high on one of the ridge lines that surrounds the township of Casterton. The town is nestled into the vegetated valley of the Glenelg River in the middleground, with views extending across to terminate on the distant rolling hills.	Casterton gained its name from a Roman word meaning 'walled city.' This view clearly demonstrates how the town is 'walled' by the surrounding hills, which makes it an iconic view for the identity of the town.	High (Regional)
COMPOSITION (VISUAL QUALITIES)	Survey	The main street of Casterton is the central feature of this view. The eye is drawn up the straight axis of the street, with built form spreading out on either side to merge with the surrounding landscape. The lush qualities of the river valley can be seen in contrast to the rolling, cleared agricultural land beyond. Slabs of plantation provide additional contrast within the gently undulating landscape.	This view is scarce as there are very few publicly available views over the town of Casterton, and the axis of the main street is an excellent visual feature.	High (Regional)
<b>Overall Aesthetic Significance Rating</b>				<b>High (Regional)</b>

## Other Cultural Landscape Values

OTHER VALUES		
	Source	Description
SOCIAL VALUE	Tourist information	The Casterton Lookout is a popular viewing location for the town. It is extensively promoted through tourist information and is clearly signposted and accessible.
HISTORICAL VALUE	Tourist information	The lookout enables an understanding of how the township was formed among the hilly landscape.
CULTURAL VALUES SIGNIFICANCE RATING		Regional



## 5.1 MOUNT ARAPILES

### Significant Viewing Location

Character Type	5	The Wimmera Plains
Character Areas visible in view	5.1	Lakes & Wetlands
	5.2	Cleared Wimmera Catchment
	5.3	Lake Lonsdale & Surrounds
	5.4	Mount Arapiles

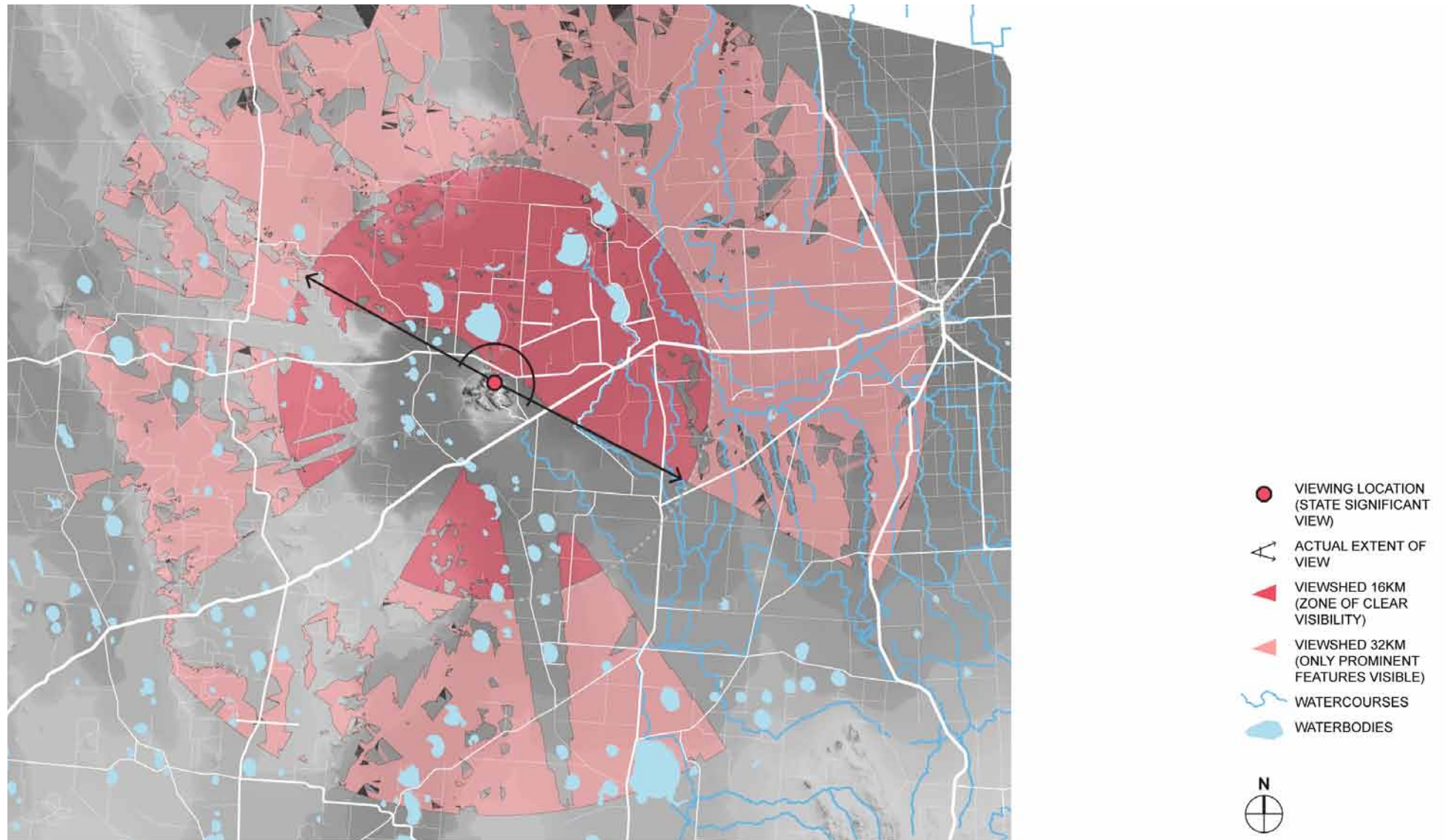
As a prominent outcrop favoured by rock climbers, views are available from literally all over Mount Arapiles. The most readily available viewing location is at the end of Mount Arapiles Summit Road. The viewshed predominantly captures land to the north over Mitre Rock and Mitre Lake, as mapped opposite.

### Overall View Significance Rating: State



Image from <http://osp.com.au/>

## Viewshed Map: Mount Arapiles Summit Lookout



## Aesthetic Values

AESTHETIC VALUES				
	Source	Description	Aesthetic Values Rating Considerations (i.e. exemplary, iconic, scarce)	Level of Significance
COMPOSITION (STRUCTURE)	Survey	<p>The view from the lookout of Mount Arapiles features a foreground of rugged, rocky slopes, covered with dense vegetation. The view drops down dramatically, with a middle ground dominated by the smaller rocky outcrop of Mitre Rock and the expanse of Mitre Lake just beyond. The background of the view stretches over the flat Wimmera Plains, with the Little Desert National Park discernible as a darker stretch of vegetation on the horizon.</p> <p>From other locations on Mount Arapiles, views stretch out across the Wimmera Plains. There are numerous points of interest for the viewer, including milky saline lakes that reflect the sky and vast agricultural plains, seasonally carpeted in wildflowers and canola. Views east capture the jagged silhouette of the Grampians.</p>	This view provides an exemplary outlook over the Wimmera Plains, and features the combination of Mitre Rock and Mitre Lake which is an iconic part of the Mount Arapiles experience.	Exceptional (State)
COMPOSITION (VISUAL QUALITIES)	Survey	<p>From the Mount Arapiles Summit Road lookout, the rough craggy texture of Mitre Rock is an interesting visual feature as it rises from the edge of the park. The white, circular formation of Mitre Lake stretches out, dominating the middle ground beyond. There are a series of strong contrasts between the thick vegetation contained within the National Park, the broad agricultural land and the white reflections of the saline lake.</p> <p>The flat agricultural expanse of the Wimmera Plains experience much seasonal variation, with grasses of deep green in during the cooler months, bright yellow canola crops in Spring and then drying out to a light golden colour over Summer. These plains are peppered with lakes and wetlands that also experience high levels of seasonal variation depending on the time of year and the amount of rainfall that has been received. The craggy formation of the Grampians Ranges is a striking feature on the eastern horizon, while to the west views seem to stretch infinitely out across the relatively flat land.</p>	Mount Arapiles is easily accessible and the viewing locations offer spectacular views over the surrounding landscape.	Exceptional (State)
Overall Aesthetic Significance Rating				State

Other Cultural Landscape Values

OTHER VALUES		
	Source	Description
SOCIAL VALUE	Tourist Information	<p>The Mount Arapiles Summit Lookout allows for extensive views over the surrounding area without the need for the skills and equipment of the rock climbers who favour this destination.</p> <p>Rock climbers venture from all over the world to climb Arapiles and take in views that are available from many locations on the Mount.</p>
ENVIRONMENTAL VALUE	Tourist Information	Lookouts provides an important opportunity for viewing the surrounding natural features and appreciation of the area’s environmental qualities.
CULTURAL VALUES SIGNIFICANCE RATING		Regional



## 6.1 GRAMPIANS LOOKOUTS

### Significant viewing locations

Character Type	6	The Grampians
Character Areas visible in view	6.1	The Grampians Ranges
	6.2	Grampians Surrounds
	6.3	Black Range & Surrounds

The Grampians National Park (Gariwerd) contains a large number of spectacular views. Viewing locations are accessible through driving, walking or climbing.

The viewsheds of the most accessible lookouts with the highest level of visitation, Boroka and Reed Lookouts, have been mapped opposite. These display two of the main types of views to be found in the Grampians: views out over the surrounding landscape, and views that are contained within the ranges.

### Overall Views Significance Rating: State (or higher)

A detailed significance assessment is provided over the following pages.



*Boroka Lookout provides spectacular views over the surrounding landscape including the Pyrenees Ranges to the east*



*Views from Reed Lookout are contained within the National Park, out towards the Victoria Valley*

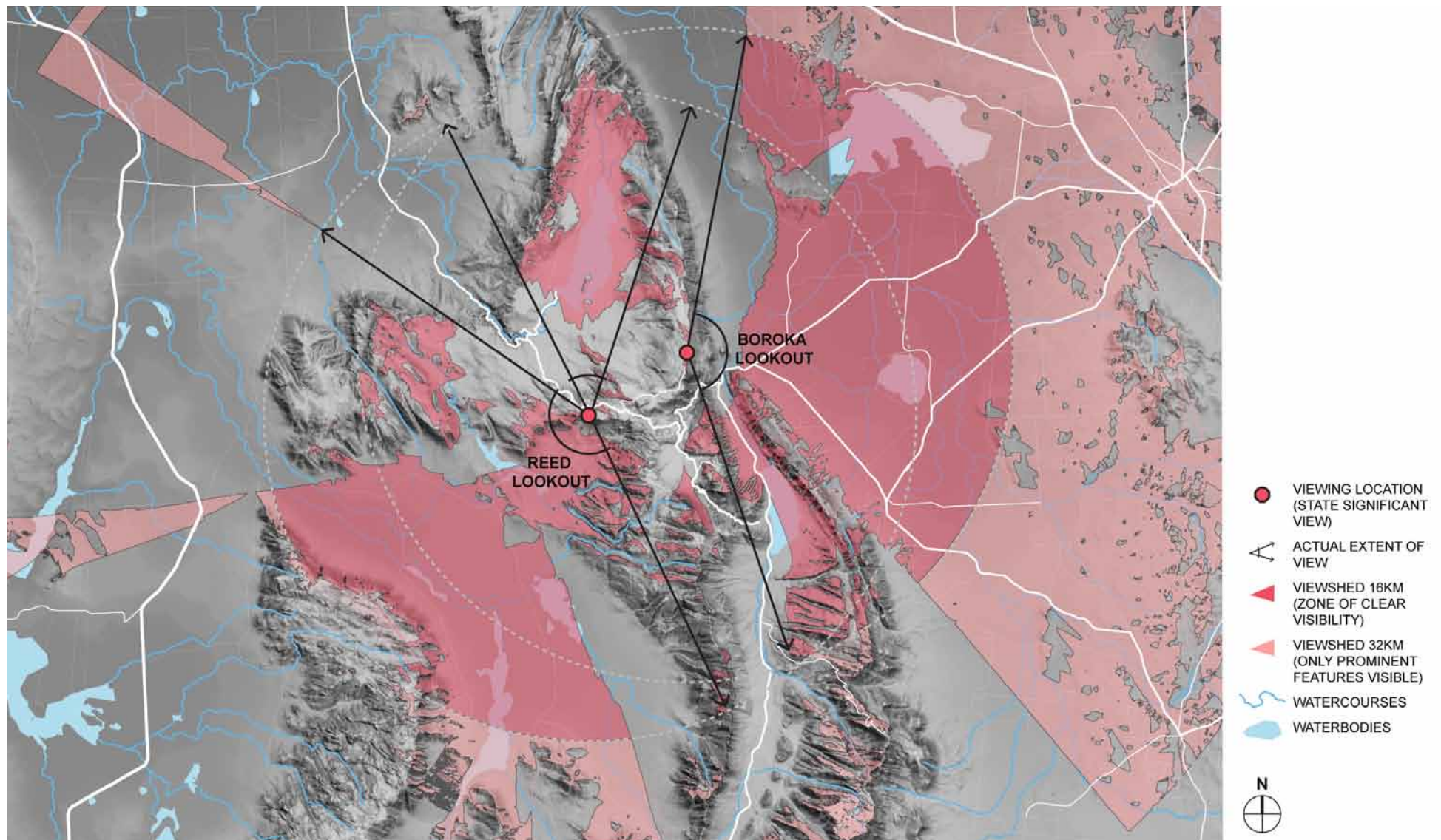


*View towards the Grampians (Gariwerd) from Yarram Gap Road*



*View from Mount William towards the Victoria Valley*

## Viewshed Map: Boroka & Reed Lookouts (Grampians Lookouts)





## Aesthetic Values

AESTHETIC VALUES				
	Source	Description	Aesthetic Values Rating Considerations (i.e. exemplary, iconic, scarce)	Level of Significance
COMPOSITION (STRUCTURE)	Survey	<p>The high elevations of the mountain range allow dozens of viewing opportunities, both within the National Park and towards it from the surrounding agricultural land.</p> <p>Most notably, Reed Lookout and The Balconies provide sweeping, panoramic views over the interior of the Grampians landscape, from the Victoria Valley in the south to Lake Wartook and the Mount Difficult Range to the north. Reed lookout is accessible by car, while the Balconies involves a 2km return walk. Boroka Lookout is another highly visited location, accessible by a short walk from a car park. It looks outwards over the sweeping agricultural land to the east of the ranges that extends to the peaks and formations of the Southern Pyrenees and hills surrounding Ararat, as well as Halls Gap nestled between the juncture of the Mount Difficult and Mount William Ranges. The summit of Mount William (1,167m) may be reached after completing a steep climb. The reward is breathtaking views across the Grampians landscape and surrounding valleys and townships to the north and east.</p> <p>There are also many walking trails to other well-known lookouts within the Grampians National Park. Walks that offer panoramic views include The Chimney Pots, The Piccaninny, Mount Sturgeon, Mount Abrupt, Paddy Castle and Mount Thackeray. The walks range from short gradual climbs (25 minutes return) to more steep strenuous hikes (3 hours return). Rock climbers are rewarded with outstanding views from the sandstone cliffs and precipices within the National Park.</p>	The views available within, from and to the Grampians National Park are both numerous and spectacular. The number of viewing opportunities and the range of iconic features within these views are exemplary and scarce within the State.	State (or higher)
COMPOSITION (VISUAL QUALITIES)	Survey	<p>The Grampians Ranges National Park offers numerous spectacular scenic lookout points which capture stunning, panoramic views to features within the ranges and out across the surrounding landscape. These are often located up high and feature dense bushland in the foreground with sweeping views across the vegetated valleys and craggy, rocky peaks of the ranges, to agricultural land beyond.</p> <p>The Grampians Ranges themselves provide a dramatic termination to numerous views and vistas from the surrounding landscape, with the jagged silhouette featuring on the horizon. There are numerous scenic viewing corridors that are dominated by the presence of the ranges.</p>	This collection of views of outstanding visual quality is exemplary within Victoria. The Grampians and its many known viewing opportunities of iconic landscapes are a key feature of western Victorian.	State (or higher)
Overall Aesthetic Significance Rating				State (or higher)

## Other Cultural Landscape Values

OTHER VALUES		
	Source	Description
SOCIAL VALUE	Desktop Research	The Grampians National Park is a key tourist destination for many people from around Victoria, and beyond. The many viewing opportunities are a main attraction of the park.
ENVIRONMENTAL VALUE	Survey	The viewing opportunities allow appreciation of the environmental qualities of the park and surrounding landscape.
CULTURAL VALUES SIGNIFICANCE RATING		State