

Conservation area 15, Western Growth Corridor: Growling Grass Frog corridors (north)

Total area and boundary	<ul style="list-style-type: none"> > 539.67 hectares > Boundaries are shown in Figures 32 a, b and c <p>Note: The boundaries shown in Figure 32 and the Sub-regional Species Strategy for the Growling Grass Frog may be varied slightly if necessary at the precinct structure planning stage to account for site-specific issues. Any variations must not reduce the overall area of the Growling Grass Frog conservation area within that precinct. Any variation must be approved by DEPI.</p>
Management category	<ul style="list-style-type: none"> > Growling Grass Frog conservation, floodplain and open space (part only) > Regional park (Kororoit Creek Regional Park)
Key rationale for protection of area	<ul style="list-style-type: none"> > Protects important populations of Growling Grass Frog and ensures connectivity between populations along the Kororoit Creek and Toolern Creek
Biodiversity values of national significance	<ul style="list-style-type: none"> > Growling Grass Frog populations within high quality habitat
Biodiversity values of state significance	<ul style="list-style-type: none"> > Growling Grass Frog > Austral Tobacco > Werribee Blue-box > Fragrant Saltbush
Contribution of area to achievement of conservation outcomes in the program report	<ul style="list-style-type: none"> > Ensures functioning sustainable populations of Growling Grass Frog with connectivity between populations
Further actions	<ul style="list-style-type: none"> > Vary Growling Grass Frog corridor boundary slightly if necessary to account for site-specific issues at the precinct structure planning stage. Any variation: <ul style="list-style-type: none"> – must not reduce the total area of the Growling Grass Frog corridor within the relevant precinct – must not impact negatively on Growling Grass Frog populations – must be demonstrated to have no effect on the functioning or management objectives of the corridor for the Growling Grass Frog – must be to the satisfaction of DEPI – must be documented in the conservation management plan > Protect conservation area through the following actions: <ul style="list-style-type: none"> – retain Rural Conservation Zone where it exists – apply appropriate planning provisions to the land depending on the circumstances (may include a Rural Conservation Zone, an Environmental Significance Overlay or another statutory mechanism) to be determined by the State Minister for Planning – prepare conservation management plan(s) and ensure planning provisions for implementation and funding are in place – establish management agreements with landowners under section 69 of the <i>Conservation Forests and Lands Act 1987</i> and/or transfer land to Crown to be managed by Melbourne Water

Reference: Biosis Research (2012); DSE (2012a); DSE (2011c); Ecology Partners (2011a); State Government (2009)

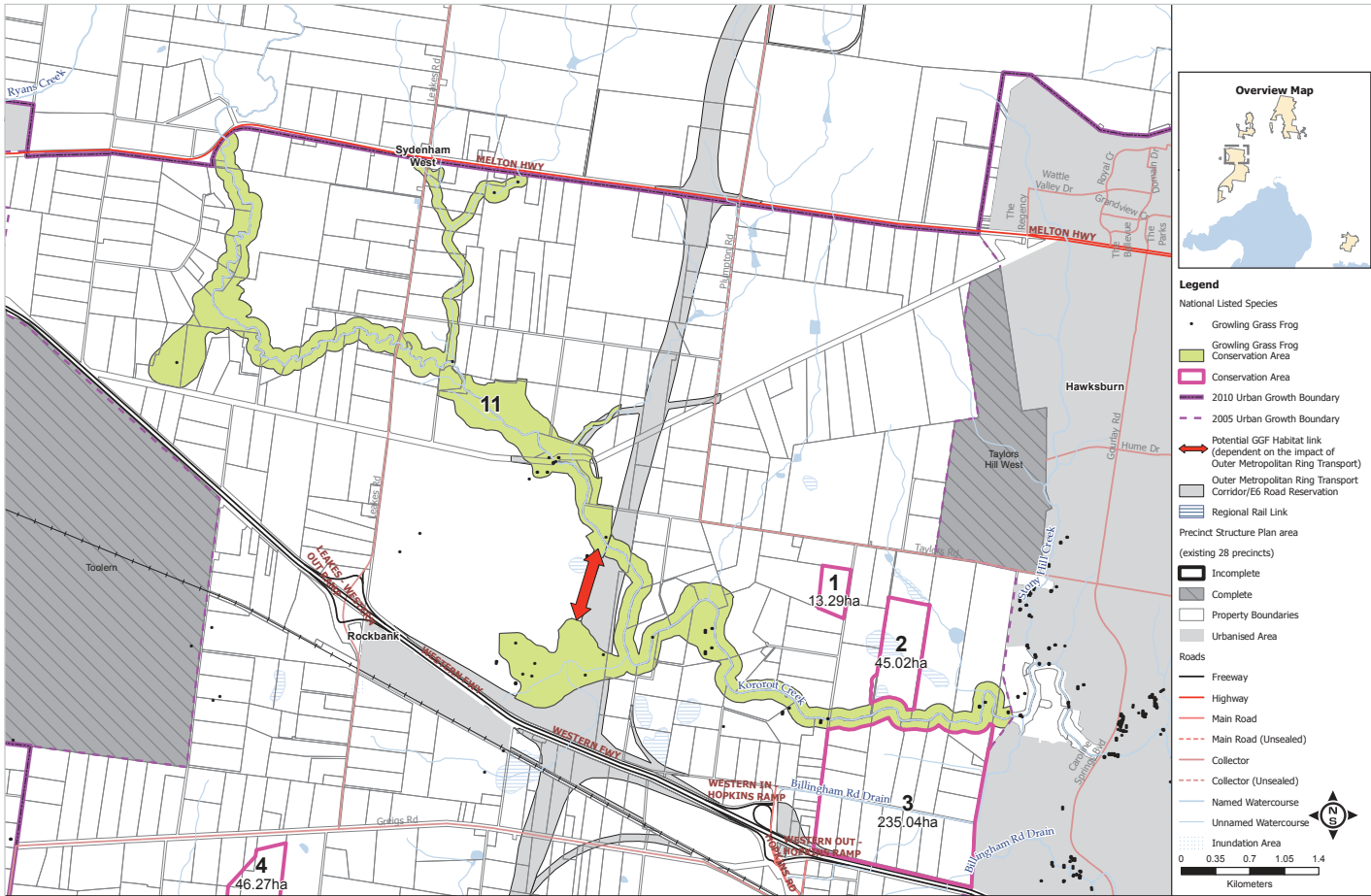


Figure 32a: Conservation Area 11, Growing Grass Frog Corridors, Western Growth Corridor
 Disclaimer: This map is a snapshot generated from Victorian Government data. This material may be of assistance to you but the State of Victoria does not guarantee that the publication is without flaw of any kind or is wholly appropriate for your particular purposes and therefore disclaims all liability for error, loss or damage which may arise from reliance upon it. All persons accessing this information should make appropriate enquiries to assess the currency of the data.
 © The State of Victoria, Department of Environment and Primary Industries (DEPI), 2013. <http://www.depi.vic.gov.au> | Map produced on 21 January 2013



Figure 32 a: Growing Grass Frog Corridors, Western Growth Corridor

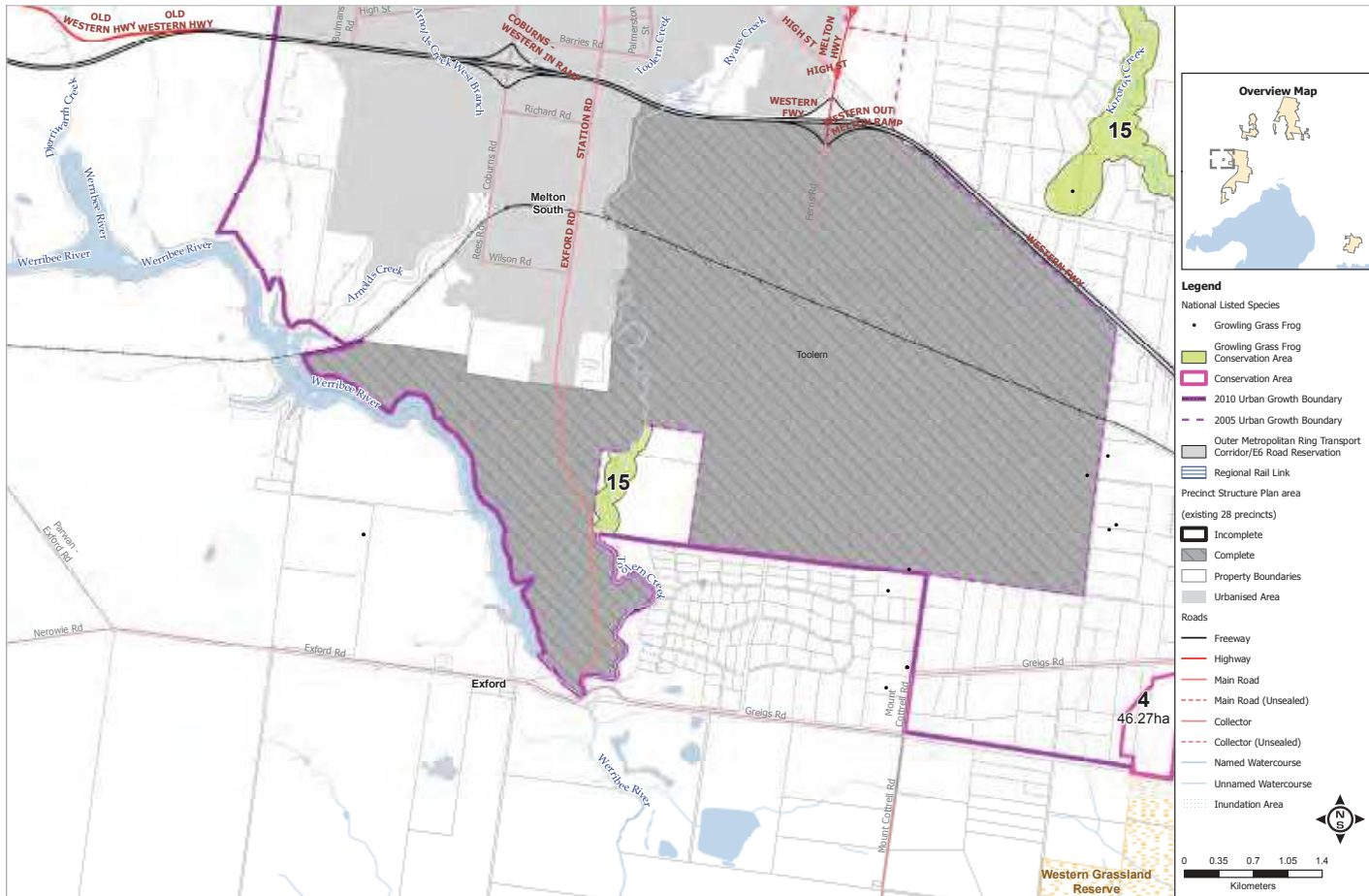


Figure 32b: Conservation Area 15, Growing Grass Frog Corridors, Western Growth Corridor

Disclaimer: This map is a snapshot generated from Victorian Government data. This material may be of assistance to you but the State of Victoria does not guarantee that the publication is without flaw of any kind or is wholly appropriate for your particular purposes and therefore disclaims all liability for error, loss or damage which may arise from reliance upon it. All persons accessing this information should make appropriate enquiries to assess the currency of the data.
 © The State of Victoria, Department of Environment and Primary Industries (DEPI), 2013. <http://www.depi.vic.gov.au> | Map produced on 04 June 2012



Figure 32 b: Growing Grass Frog Corridors, Western Growth Corridor

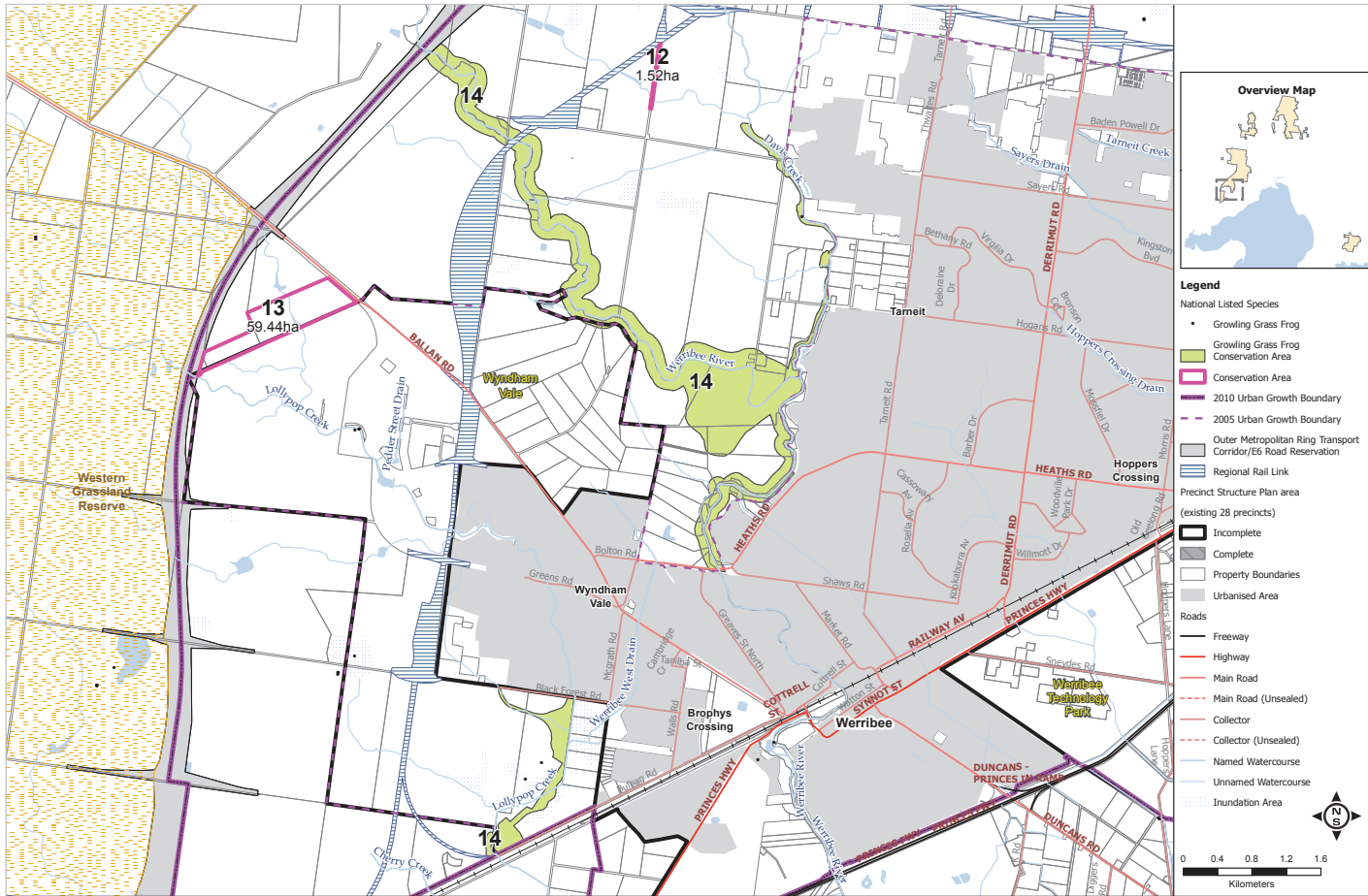


Figure 32c: Conservation Area 10, Gwollong Grass Frog Corridors, Western Growth Corridor

Disclaimer: This map is a snapshot generated from Victorian Government data. This material may be of assistance to you but the State of Victoria does not guarantee that the publication is without flaw of any kind or is wholly appropriate for your particular purposes and therefore disclaims all liability for error, loss or damage which may arise from reliance upon it. All persons accessing this information should make appropriate enquiries to assess the currency of the data.
 © The State of Victoria, Department of Environment and Primary Industries (DEPI), 2013. <http://www.dep.vic.gov.au> | Map produced on 31 January 2013



Figure 52 c: Growing Grass Frog Corridors, Western Growth Corridor