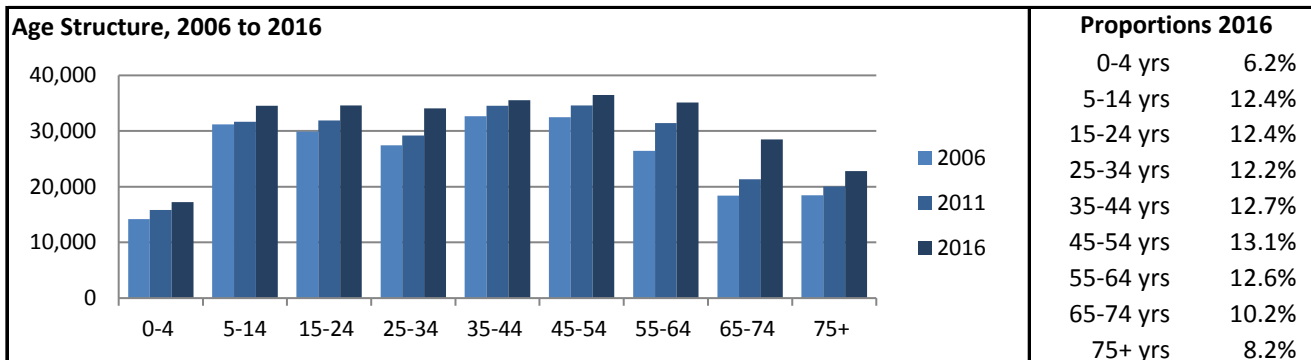
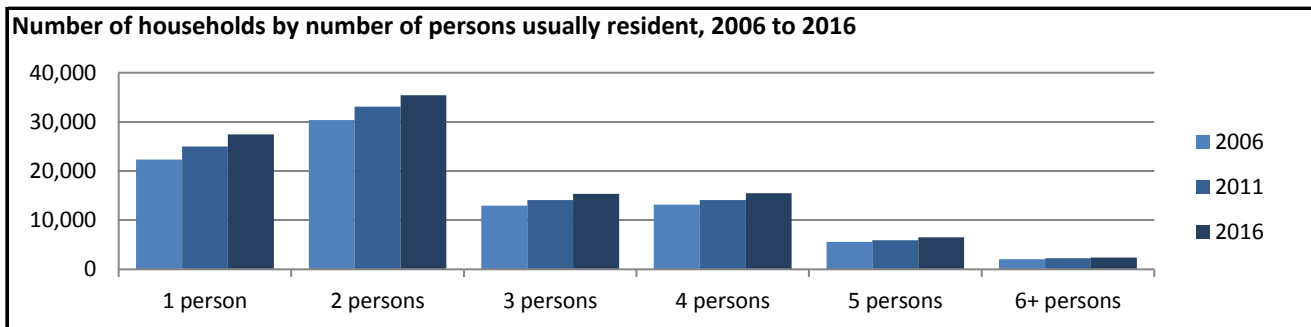


Geelong (SA4)

| Count of persons by Usual Residence | Total 2006 | 231,275 | Period | 5-year change | Annual rate |
|--|------------|---------|---------|-----------------|-------------|
| | Total 2011 | 250,650 | 2006-11 | 19,375 increase | 1.6% p.a. |
| | Total 2016 | 278,929 | 2011-16 | 28,279 increase | 2.2% p.a. |



| | 2006 | 2011 | 2016 |
|--|-------|-------|-------|
| Median population age in years | 38 | 39 | 40 |
| Proportion indigenous persons | 0.7% | 0.8% | 1.0% |
| Proportion Australian citizens | 90.2% | 89.9% | 87.8% |
| Proportion born in Australia | 79.6% | 80.3% | 78.0% |
| Proportion born elsewhere | 15.1% | 15.2% | 15.4% |
| Proportion speaking English only at home | 87.6% | 87.4% | 84.4% |
| Proportion speaking other language at home | 8.3% | 8.6% | 9.5% |



| | 2006 | 2011 | 2016 |
|--|-------|-------|-------|
| Average household size | 2.5 | 2.5 | 2.5 |
| Average persons per bedroom | 0.8 | 0.8 | 0.8 |
| Proportion of households with children | 41.2% | 40.2% | 39.3% |
| Proportion couple-only households | 26.6% | 26.5% | 25.8% |
| Proportion lone person households | 24.9% | 25.5% | 25.3% |
| Proportion group households | 3.0% | 3.1% | 3.2% |
| Proportion of dwellings rented | 22.7% | 24.5% | 25.1% |
| Proportion owned with mortgage | 37.7% | 35.6% | 33.8% |
| Proportion owned outright | 33.5% | 34.1% | 33.5% |