

Richmond High School *

*interim school name

Fact Sheet

August 2016

NEW SECONDARY SCHOOL

The Victorian Government has committed a total of \$43 million to establish a new secondary school for Richmond. This will allow for the continued planning and delivery of a new co-educational secondary school that will be built to progressively cater for 650 students from term 1, 2018.

LOCATION IN RICHMOND

The school will be built across two sites in Richmond. One site is located at 16 Gleadell Street and the other at 280 Highett Street in Richmond.

The Highett street site will host the main administration building and classrooms, while the Gleadell Street site will feature sporting and recreational facilities, including a competition grade indoor gymnasium.

Building the school across two sites will allow greater flexibility in the design of the school and increase outdoor and recreational space for students.

Being in the heart of Richmond, the school site has great transport links and is close to existing community infrastructure and services.



ADDITIONAL SITE

The Highett Street site is currently owned by the Department of Health and Human Services (DHHS). DHHS has confirmed that the Department of Education and Training (DET) can acquire this vacant land to deliver this valuable school resource for the Richmond community.

This additional site will ensure the new school precinct will offer educational and sporting facilities in the one location.

NEIGHBOURING BUSINESSES

Measures are in place, and others are being explored to ensure that the impact to neighbouring sites is reduced. Neighbouring businesses and organisations are being consulted.

SCHOOL DESIGN

Richmond High School will provide excellent, wide-ranging services, facilities and accommodation for the school and the surrounding local community.

The school environment will have a high degree of flexibility and agility of use. Settings and spaces will promote a range of experiences and activities to suit the varying needs of students and staff.

The sports precinct will make sporting and recreational facilities accessible to the wider community for use outside of school hours. The academic precinct will provide a campus heart with provision for after-hours resource and study spaces at the ground level and outdoor spaces for learning, gathering and play.



SWAN STREET SITE

The Swan street site is currently owned by DET and has determined that the site is no longer required for educational purposes and has been determined surplus. The site is currently leased to the Yarra City Council and is used for the provision of netball facilities.

DET has requested that the site be rezoned from a Public Park and Recreation Zone to a Commercial 1 Zone and that a development plan overlay be applied. Subject to rezoning, it is expected that DHHS will acquire 510 Swan Street in exchange for the Highett Street site on which the new school will be built. This proposed site 'swap' will leave land available for potential new social housing as well as sports and education facilities for the community.

SPORTS AT SWAN STREET

It is intended that the new, high-quality venue at Gleadell Street will provide a new home for the Swan Street netballers. DET is working closely with Sport and Recreation Victoria (SRV), DHHS and Netball Victoria (NV) to design the new facilities to competition standard.

Current users can continue to use Ryan's Reserve facilities until the new site is developed.

NEW SCHOOL FACILITIES AT RICHMOND HIGH SCHOOL

There will be four new competition-standard netball courts, one of them indoors. All outdoor courts will be floodlit.

Users will also have access to new facilities, including showers and toilets, a canteen and administration area.

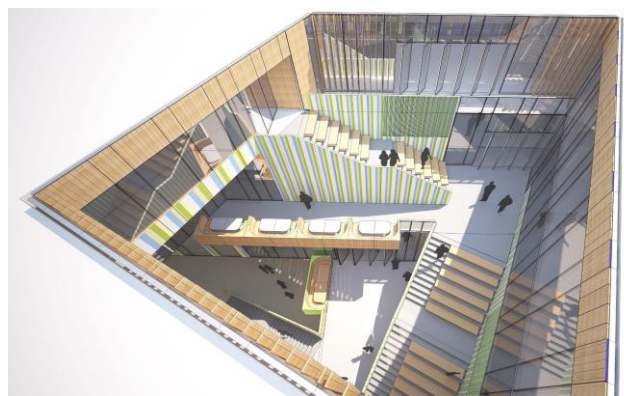


VICTORIAN SCHOOL BUILDING AUTHORITY

The school is being delivered by the Victorian School Building Authority. The authority is a new infrastructure body that will build on the existing infrastructure planning and delivery strengths of the Department of Education and Training. The authority has a dedicated focus on project planning, delivery and community engagement.

NEXT STEPS

The Authority will work closely with SRV, NV and sports groups using Swan Street to progress the design and proposed arrangements for netballers at the new school venue.



FURTHER INFORMATION

You can contact the Victorian School Building Authority via:

Email: vsba@edumail.vic.gov.au

Phone: 1800 896 950

Weekdays from 8.30 am to 5.30 pm

You can also visit the webpage and join the project update email list at www.schoolbuildings.vic.gov.au