



60 DEGREE VIEW OF PERMITTED WIND TURBINES (132M HIGH)



60 DEGREE VIEW OF AMENDED WIND TURBINES (180M HIGH)

Revision No: -

NVP01

Location data reference:
Grid Datum: MGA94 Zone 54

Easting: 700429
Northing: 5842993
Elevation: 334m

Distance to nearest permitted turbine:
1.4km approx. (T99 to SE)
Distance to nearest amended turbine:
1.6km approx. (C7 to SE)



Stockyard Hill Wind Farm

For: Stockyard Hill Wind Farm Pty Ltd

Viewpoint NVP01
Beaufort-Carranballac Road

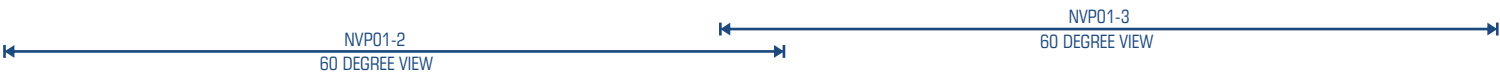
Project No:	0247530	Date:	22 JANUARY 2016
Drawing No:	NVP01-3	Drawn by:	AE
Revision No:	-	Reviewed by:	AW



WIREFRAME OF PERMITTED WIND TURBINES (132M HIGH)



WIREFRAME OF AMENDED WIND TURBINES (180M HIGH)



Revision No: -

NVP01
Location data reference:
Grid Datum: MGA94 Zone 54

Easting: 700429
Northing: 5842993
Elevation: 334m

Distance to nearest permitted turbine:
1.4km approx. (T99 to SE)
Distance to nearest amended turbine:
1.6km approx. (C7 to SE)



Stockyard Hill Wind Farm

For: Stockyard Hill Wind Farm Pty Ltd

Viewpoint NVP01

Beaufort-Carranballac Road

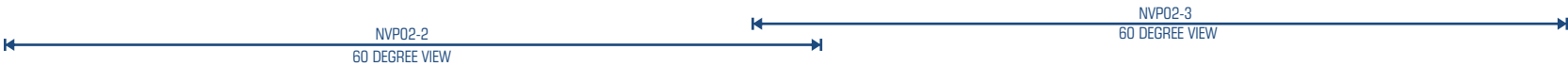
Project No:	0247530	Date:	22 JANUARY 2016
Drawing No:	NVP01-4	Drawn by:	AE
Revision No:	-	Reviewed by:	AW



PHOTOMONTAGE OF PERMITTED WIND TURBINES (132M HIGH)



PHOTOMONTAGE OF AMENDED WIND TURBINES (180M HIGH)



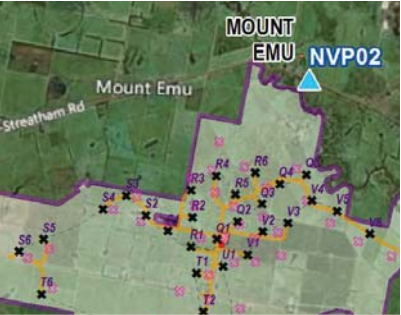
Revision No: -

NVP02

Location data reference:
Grid Datum: MGA94 Zone 54

Easting: 714471
Northing: 5835833
Elevation: 350m

Distance to nearest permitted turbine:
1.7km approx. (T192 to S)
Distance to nearest amended turbine:
1.8km approx. (Q5 to S)





60 DEGREE VIEW OF PERMITTED WIND TURBINES (132M HIGH)



60 DEGREE VIEW OF AMENDED WIND TURBINES (180M HIGH)

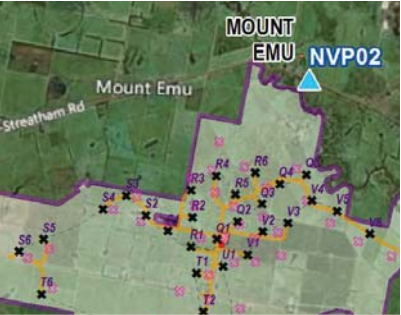
Revision No: -

NVP02

Location data reference:
Grid Datum: MGA94 Zone 54

Easting: 714471
Northing: 5835833
Elevation: 350m

Distance to nearest permitted turbine:
1.7km approx. (T192 to S)
Distance to nearest amended turbine:
1.8km approx. (Q5 to S)





60 DEGREE VIEW OF PERMITTED WIND TURBINES (132M HIGH)



60 DEGREE VIEW OF AMENDED WIND TURBINES (180M HIGH)

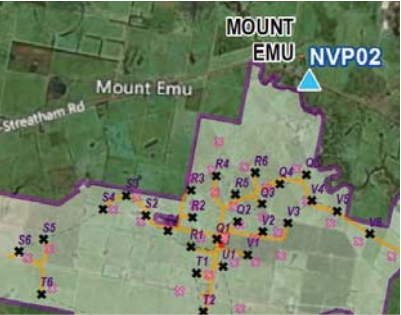
Revision No: -

NVP02

Location data reference:
Grid Datum: MGA94 Zone 54

Easting: 714471
Northing: 5835833
Elevation: 350m

Distance to nearest permitted turbine:
1.7km approx. (T192 to S)
Distance to nearest amended turbine:
1.8km approx. (Q5 to S)





WIREFRAME OF PERMITTED WIND TURBINES (132M HIGH)



WIREFRAME OF AMENDED WIND TURBINES (180M HIGH)



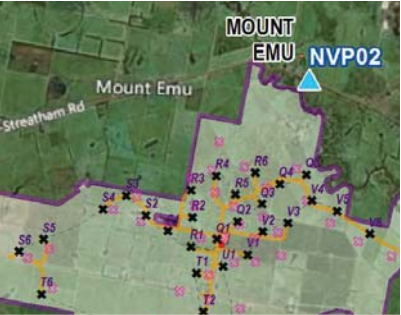
Revision No: -

NVP02

Location data reference:
Grid Datum: MGA94 Zone 54

Easting: 714471
Northing: 5835833
Elevation: 350m

Distance to nearest permitted turbine:
1.7km approx. (T192 to S)
Distance to nearest amended turbine:
1.8km approx. (Q5 to S)





PHOTOMONTAGE OF PERMITTED WIND TURBINES (132M HIGH)



PHOTOMONTAGE OF AMENDED WIND TURBINES (180M HIGH)

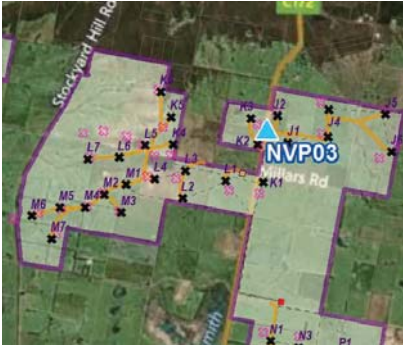


Revision No: -

NVP03
Location data reference:
Grid Datum: MGA94 Zone 54

Easting: 710048
Northing: 5848861
Elevation: 378m

Distance to nearest permitted turbine:
0.2km approx. (T41 to NW)
Distance to nearest amended turbine:
0.3km approx. (J2 to NE)



Stockyard Hill Wind Farm

For: Stockyard Hill Wind Farm Pty Ltd

Viewpoint NVP03
Skipton Road

Project No:	0247530	Date:	22 JANUARY 2016
Drawing No:	NVP03-1	Drawn by:	AE
Revision No:	-	Reviewed by:	AW



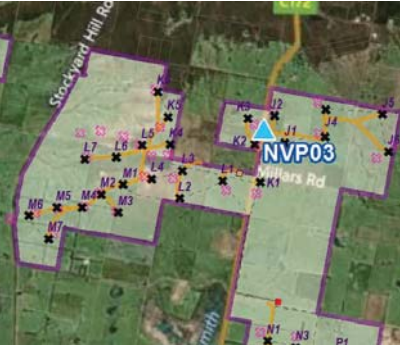
Revision No: -

NVP03

Location data reference:
Grid Datum: MGA94 Zone 54

Easting: 710048
Northing: 5848861
Elevation: 378m

Distance to nearest permitted turbine:
0.2km approx. (T41 to NW)



Stockyard Hill Wind Farm

For: Stockyard Hill Wind Farm Pty Ltd

Viewpoint NVP03
Skipton Road

Project No:	0247530	Date:	22 JANUARY 2016
Drawing No:	NVP03-2	Drawn by:	AE
Revision No:	-	Reviewed by:	AW



030°

040°

NE

050°

060°

070°

080°

60 DEGREE VIEW OF AMENDED WIND TURBINES (180M HIGH)

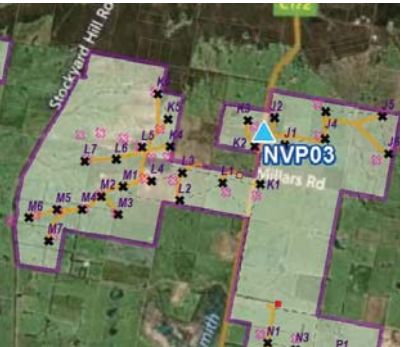
Revision No: -

NVP03

Location data reference:
Grid Datum: MGA94 Zone 54

Easting: 710048
Northing: 5848861
Elevation: 378m

Distance to nearest amended turbine:
0.3km approx. (J2 to NE)



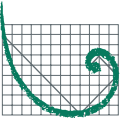
Stockyard Hill Wind Farm

For: Stockyard Hill Wind Farm Pty Ltd

Viewpoint NVP03
Skipton Road

Project No: 0247530
Drawing No: NVP03-3
Revision No: -

Date: 22 JANUARY 2016
Drawn by: AE
Reviewed by: AW



ERM

World Trade Centre
Level 3, Tower 3
18-38 Siddley Street, DOCKLANDS
VICTORIA 3005 AUSTRALIA
Telephone: +61 3 9696 8011
Facsimile: +61 3 9696 8022
www.erm.com

Environmental Resources Management Australia



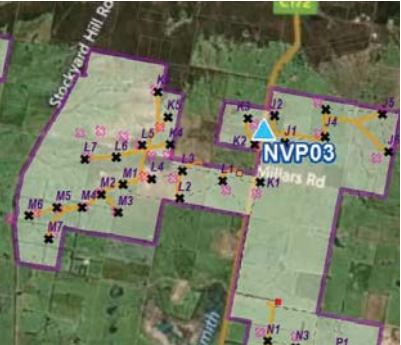
Revision No: -

NVP03

Location data reference:
Grid Datum: MGA94 Zone 54

Easting: 710048
Northing: 5848861
Elevation: 378m

Distance to nearest permitted turbine:
0.2km approx. (T41 to NW)



Stockyard Hill Wind Farm

For: Stockyard Hill Wind Farm Pty Ltd

Viewpoint NVP03
Skipton Road

Project No:	0247530	Date:	22 JANUARY 2016
Drawing No:	NVP03-4	Drawn by:	AE
Revision No:	-	Reviewed by:	AW

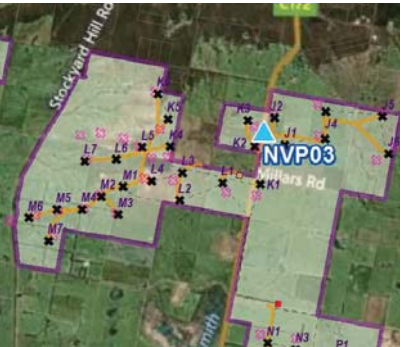


Revision No: -

NVP03
Location data reference:
Grid Datum: MGA94 Zone 54

Easting: 710048
Northing: 5848861
Elevation: 378m

Distance to nearest amended turbine:
0.3km approx. (J2 to NE)



Stockyard Hill Wind Farm

For: Stockyard Hill Wind Farm Pty Ltd

Viewpoint NVP03
Skipton Road

Project No:	0247530	Date:	22 JANUARY 2016
Drawing No:	NVP03-5	Drawn by:	AE
Revision No:	-	Reviewed by:	AW



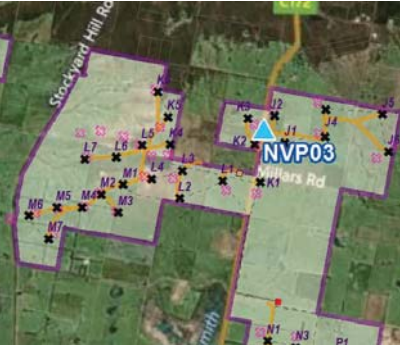
Revision No: -

NVP03

Location data reference:
Grid Datum: MGA94 Zone 54

Easting: 710048
Northing: 5848861
Elevation: 378m

Distance to nearest permitted turbine:
0.2km approx. (T41 to NW)



Stockyard Hill Wind Farm

For: Stockyard Hill Wind Farm Pty Ltd

Viewpoint NVP03
Skipton Road

Project No:	0247530	Date:	22 JANUARY 2016
Drawing No:	NVP03-6	Drawn by:	AE
Revision No:	-	Reviewed by:	AW



60 DEGREE VIEW OF AMENDED WIND TURBINES (180M HIGH)

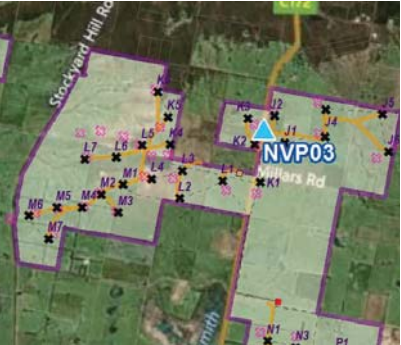
Revision No: -

NVP03

Location data reference:
Grid Datum: MGA94 Zone 54

Easting: 710048
Northing: 5848861
Elevation: 378m

Distance to nearest amended turbine:
0.3km approx. (J2 to NE)



Stockyard Hill Wind Farm

For: Stockyard Hill Wind Farm Pty Ltd

Viewpoint NVP03
Skipton Road

Project No:	0247530	Date:	22 JANUARY 2016
Drawing No:	NVP03-7	Drawn by:	AE
Revision No:	-	Reviewed by:	AW



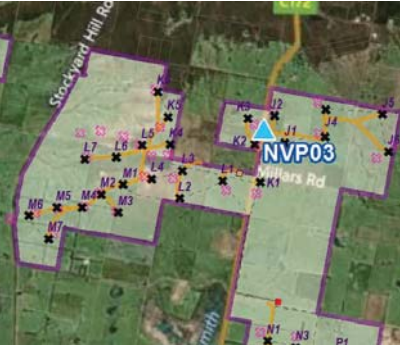
Revision No: -

NVP03

Location data reference:
Grid Datum: MGA94 Zone 54

Easting: 710048
Northing: 5848861
Elevation: 378m

Distance to nearest permitted turbine:
0.2km approx. (T41 to NW)



Stockyard Hill Wind Farm

For: Stockyard Hill Wind Farm Pty Ltd

Viewpoint NVP03
Skipton Road

Project No:	0247530	Date:	22 JANUARY 2016
Drawing No:	NVP03-8	Drawn by:	AE
Revision No:	-	Reviewed by:	AW



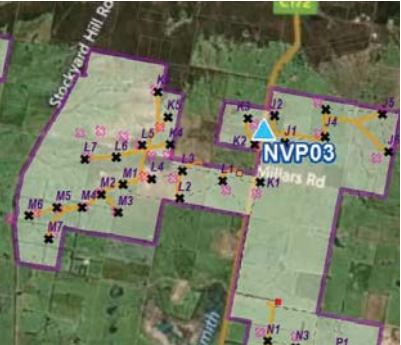
Revision No: -

NVP03

Location data reference:
Grid Datum: MGA94 Zone 54

Easting: 710048
Northing: 5848861
Elevation: 378m

Distance to nearest amended turbine:
0.3km approx. (J2 to NE)



Stockyard Hill Wind Farm

For: Stockyard Hill Wind Farm Pty Ltd

Viewpoint NVP03
Skipton Road

Project No:	0247530	Date:	22 JANUARY 2016
Drawing No:	NVP03-9	Drawn by:	AE
Revision No:	-	Reviewed by:	AW



WIREFRAME OF PERMITTED WIND TURBINES (132M HIGH)



WIREFRAME OF AMENDED WIND TURBINES (180M HIGH)



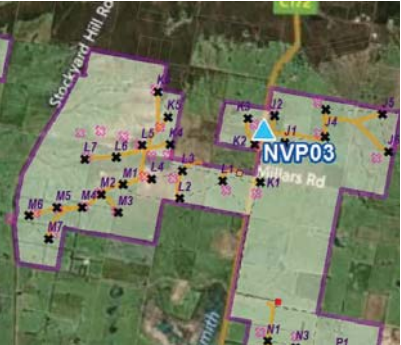
Revision No: -

NVP03

Location data reference:
Grid Datum: MGA94 Zone 54

Easting: 710048
Northing: 5848861
Elevation: 378m

Distance to nearest permitted turbine:
0.2km approx. (T41 to NW)
Distance to nearest amended turbine:
0.3km approx. (J2 to NE)



Stockyard Hill Wind Farm

For: Stockyard Hill Wind Farm Pty Ltd

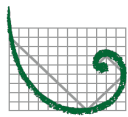
Viewpoint NVP03
Skipton Road

Project No: 0247530
Drawing No: NVP03-10
Revision No: -

Date: 22 JANUARY 2016
Drawn by: AE
Reviewed by: AW

ERM HAS OFFICES WORLD WIDE

- AUSTRALIA
- ARGENTINA
- BELGIUM
- BRAZIL
- CHINA
- FRANCE
- GERMANY
- HONG KONG
- HUNGARY
- INDIA
- INDONESIA
- IRELAND
- ITALY
- JAPAN
- KOREA
- MALAYSIA
- MEXICO
- NETHERLANDS
- NEW ZEALAND
- PERU
- POLAND
- PORTUGAL
- PUERTO RICO
- SINGAPORE
- SPAIN
- SRI LANKA
- SWEDEN
- TAIWAN
- THAILAND
- UK
- USA
- VENEZUELA
- VIETNAM



ERM

ENVIRONMENTAL RESOURCES MANAGEMENT AUSTRALIA PTY LTD (ABN 12 002 773 248)
LEVEL 3, TOWER 3, WORLD TRADE CENTRE, 18-38 SIDDELEY STREET, DOCKLANDS, VIC 3005
TEL: +61 3 9696 8011, FACSIMILE +61 3 9696 8022 WWW.ERM.COM