

Existing Landscape Character

Darlington Wind Farm

- LEGEND
- Project Boundary
 - Proposed 240 m Turbine Location
 - Roads
 - Water bodies/wetlands
 - Highpoints
 - Rivers & creeks
 - Parks / recreation reserves
 - Cemetery



0 2 4 6 8 10km

Figure 12 Existing Landscape Character (Map Source: ESRI Imagery2022)

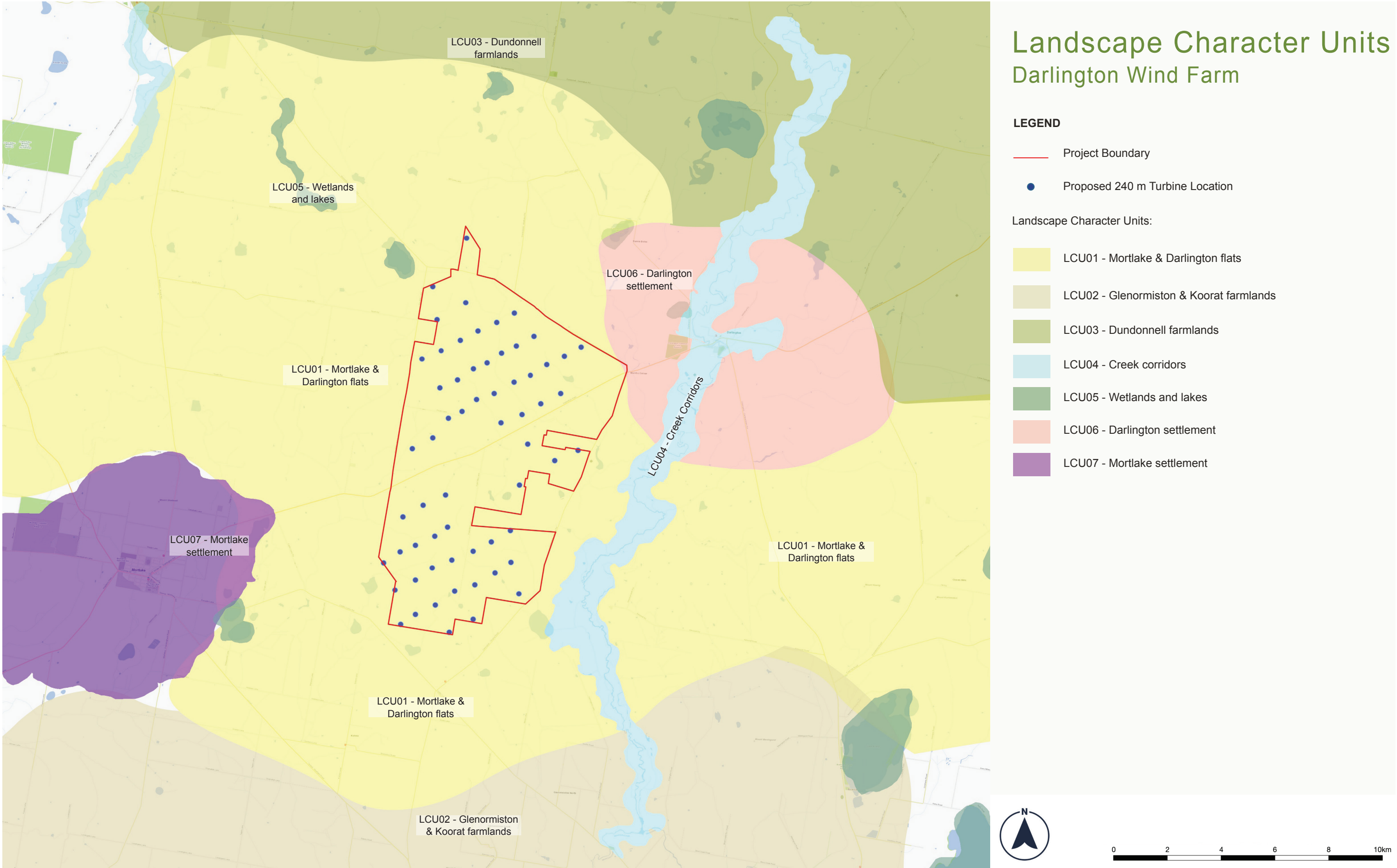


Figure 13 Landscape Character Units (Map Source: VicPlan 2022)

5.6 Landscape Character Units

A number of Landscape Character typologies exist within the Study Area (refer to **Figure 23**). As apart of the Preliminary Landscape Character Assessment, a total of seven (7) key landscape typologies referred to hereafter as Landscape Character Units (LCUs) have been identified.

Table 4 provides an overview of the LCUs and a brief overview of the potential visibility of the Project from each of the LCUs is provided in **Table 5**.

Landscape Character Units		
LCU:	Name:	General Character:
LCU01	Mortlake & Darlington flats	Comprises of flat parcels of land that are extensively used for grazing. Generally located on the northern side of the Hamilton Highway.
LCU02	Glenormiston & Koorat farmlands	Gently sloping to generally flat grazing lands that are located on the southern side of the Hamilton Highway.
LCU03	Dundonnell farmlands	Gently undulating to flat lands located near Mt Fyans and Dundonnell. Vegetation character is highly modified to suit agricultural needs.
LCU04	Creek Corridors	Comprises of water bodies that traverse the landscape. Most creek corridors are seasonal.
LCU05	Wetlands and lakes	Sub-circular depressions with seasonal water. These are dispersed around the farmlands.
LCU06	Darlington settlement	Low density rural town settled near Mt Emu Creek. Rural dwellings are generally scattered around the town and the terrain is gently undulating to flat.
LCU07	Mortlake settlement	Historic town settled as a quarry town in the foothills of Mt Shadwell. Vegetation and topographic character have been modified to suit the town's needs.

Table 4 Overview of Landscape Character Units

LCU01: Mortlake & Darlington flats

This LCU is defined by the cleared, planar lands and farming lots that are located on the northern side of the Hamilton Highway. Land is extensively used for grazing and cropping. Typical character is defined by modified pastures with scattered vegetation on a flat terrain around the settlements of Mortlake and Darlington. Vegetation is generally defined by windbreak plantations and patches of native vegetation that are interspersed on the rural farm lots.

See Images 23 and 24.



Image 23

Farmlands to the north east of Mortlake.



Image 24

Open, expansive views over cleared lands that are extensively used for grazing and dry cropping.

LCU02: Glenormiston & Koorat farmlands

The LCU is defined by gently undulating to flat agricultural lands located south of Hamilton Highway and near the settlements of Glenormiston and Koorat. Lands have been extensively cleared, modified and used for grazing and cropping. Vegetation character has been modified to suit agricultural land uses and is characterised by windbreak and corridor vegetation along roadsides. Most views are open and some are directed towards high points in the landscape. No recreational associations have been identified with these high points.

See Images 25 and 26.



Image 25

Farmlands near Koorat and Glenormiston are generally flat to gently undulating.



Image 26

Gentle undulations and views directed towards high points in the landscape represent character of this LCU.

LCU03: Dundonnell farmlands

Located to the north of Mortlake and Darlington farmlands, this LCU is defined by the generally flat to gently undulating lands that are centred around Worndoo, Mt. Fyans and Dundonnell. Vegetation character has been partially modified to suit agricultural needs. Patches of remnant vegetation are visible along road corridors. The lands are extensively used for grazing and cropping.

See Images 27 and 28.



Image 27

Gently undulating to flat land parcels used for grazing and cropping. Tracts of native vegetation can be found along roadsides and on farm lots.



Image 28

Cleared land parcels with scattered vegetation define the character of this LCU.

LCU04: Creek corridors

This LCU comprises of seasonal creek channels located on a gently sloping terrain. Large tracts of native vegetation that are ecologically significant are located along Mt Emu Creek. The natural character has been retained to a large extent and is reminiscent of the Victorian Volcanic Plain Bioregion vegetation character. The Darlington Recreation Reserve is located on the banks of this creek. No other recreational associations were identified.

See Images 29 and 30.



Image 29

Dense tracts of native vegetation along creek environs define the character of this LCU.



Image 30

Mt Emu Creek presents itself as the most prominent creek corridor in this landscape. Darlington is settled on the banks of this creek.

LCU05: Wetlands & lakes

Wetlands and lake reserves that are scattered across the landscape form a part of this LCU. The largest of these is the Lake Barnie Bolac Wildlife Reserve which is a shallow sub-circular depression. Vegetation character around these wetlands is partially modified to suit agricultural land uses in the surrounds. Landscape character is generally defined by free-standing water and boggy vegetation species that contribute to the ecological character of the region.

See Images 31 and 32.



Image 31

View of Lake Barnie Bolac Wildlife Reserve of its surrounds.



Image 32

Shallow depressions that hold water. These wetlands are located closer to Worndoo and Mortlake.

LCU06: Darlington settlement

Darlington is settled on the banks of Mt Emu Creek. It consists of low density rural dwellings and a fire station. The town can be accessed via Hamilton Highway and it comprises of wide streets that provide access to scattered rural dwellings. The vegetation character is partially modified and most tracts of vegetation form the windbreak plantation belts for dwellings.

See Images 33 and 34.



Image 33

Historic buildings and low density rural dwellings constitute the character of Darlington.



Image 34

Wide streets and partially modified vegetation character over a generally flat terrain.

LCU07: Mortlake settlement

This LCU is defined by the extents of the town of Mortlake and some of the surrounding dwellings that are a part of the region. The town was settled at the foot of Mt Shadwell and is a typical historic industrial town that has low population and less number of visitors. No tourist attractions were identified but the town serves as a truck or tourist stop for commuters that travel between the eastern parts of Victoria and significant tourist towns such as Warnambool which is located southwest of Mortlake. Vegetation character has been modified.

See Images 35 and 36.



Image 35

Main street of Mortlake comprising of small scale commercial activity.



Image 36

The town is generally settled on a flat terrain and the vegetation character has been modified to suit the semi-rural setting.