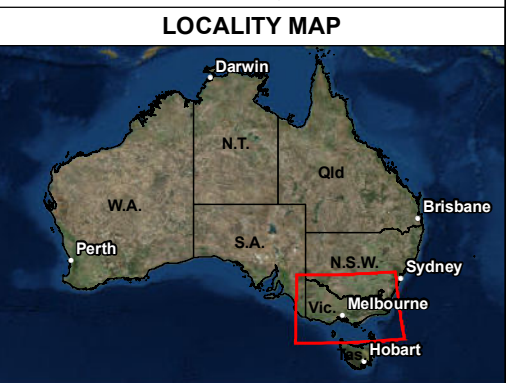
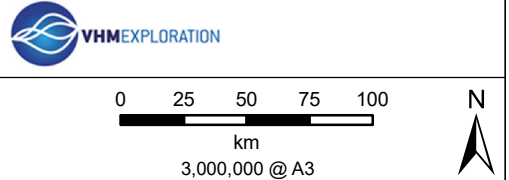




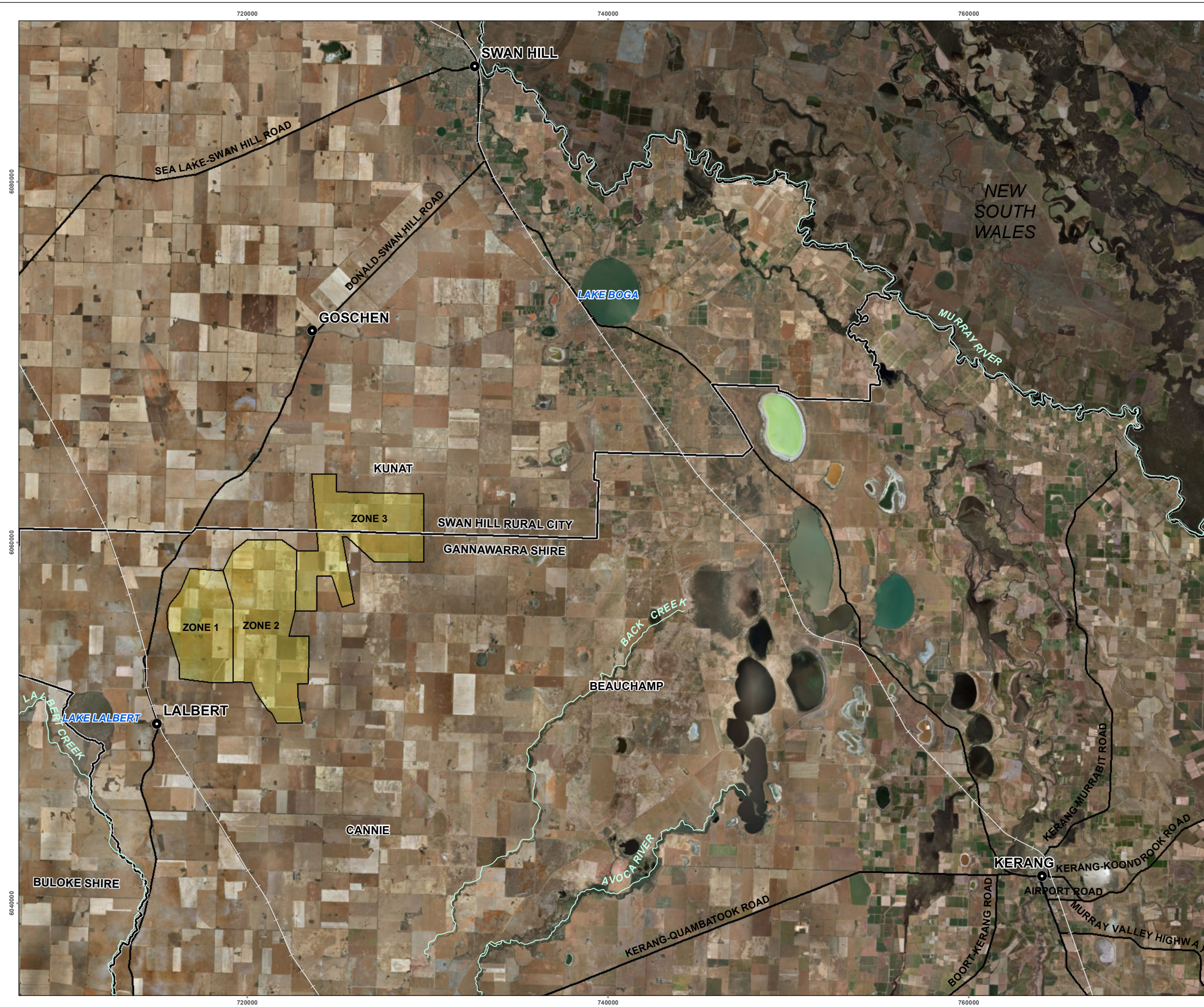
LEGEND
■ Project Area

- TOPOGRAPHIC BASE MAP, OPEN SOURCE ESRI
 - IMAGERY BASE MAP, OPEN SOURCE ESRI
 - NOTE THAT POSITION ERRORS CAN BE >5M IN SOME AREAS



PROJECT GOSCHEN PROJECT	DATE 12/06/2018
HORIZONTAL DATUM AND PROJECTION GDA 1994 MGA Zone 54	

Figure 1
Regional Location Map



LEGEND

- Targeted Mineralisation Zone
- Local Government Authority Boundary
- Major Road
- Railways
- Watercourse

- IMAGERY BASE MAP, OPEN SOURCE ESRI
 - NOTE THAT POSITION ERRORS CAN BE >5M IN SOME AREAS

VHMEEXPLORATION

1:200,000 @ A3



PROJECT GOSCHEN PROJECT	DATE 22/06/2018
HORIZONTAL DATUM AND PROJECTION GDA 1994 MGA Zone 54	

Figure 2
 Goschen Mineral Sands and Rare Earth Project Location

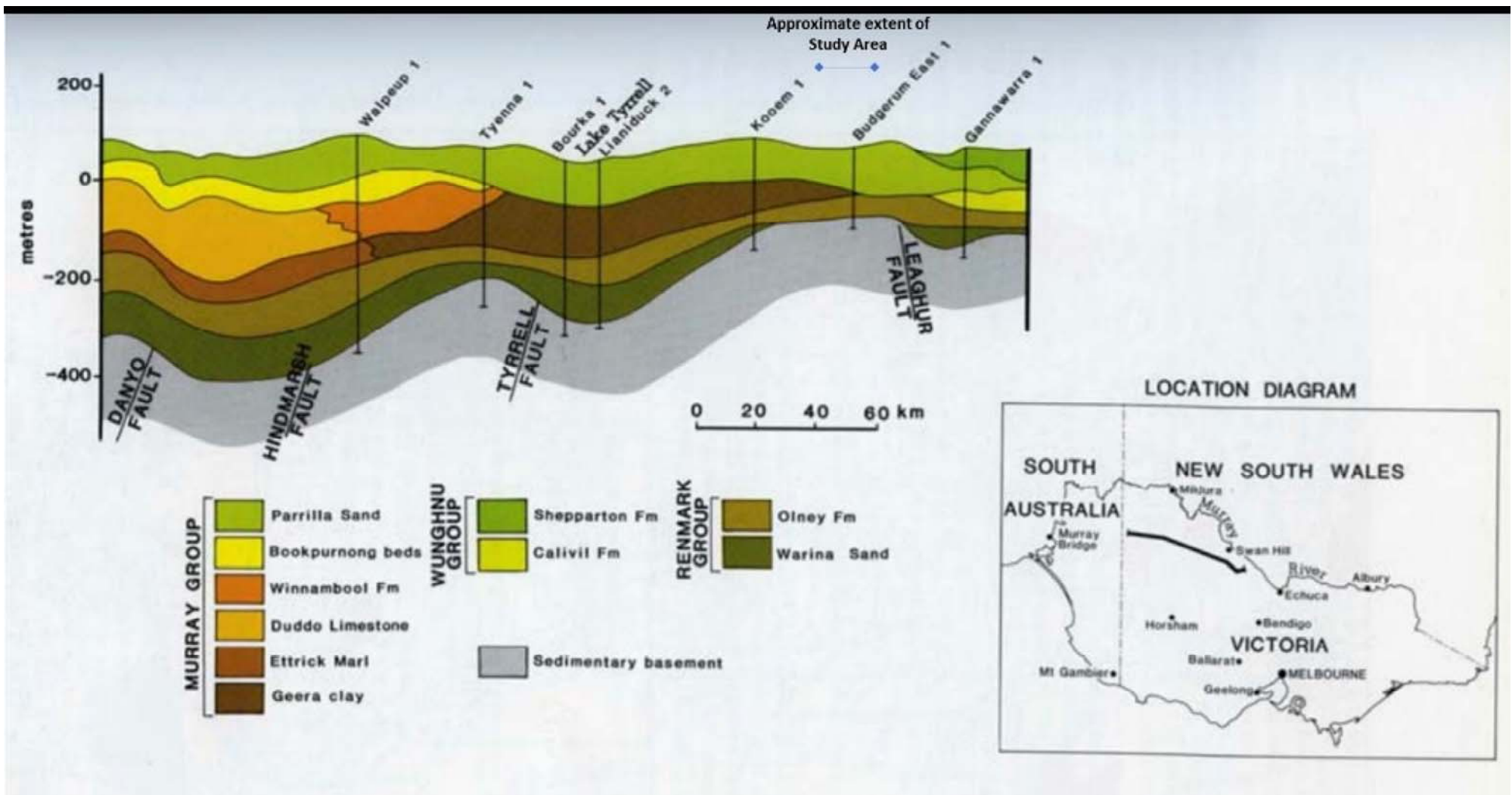
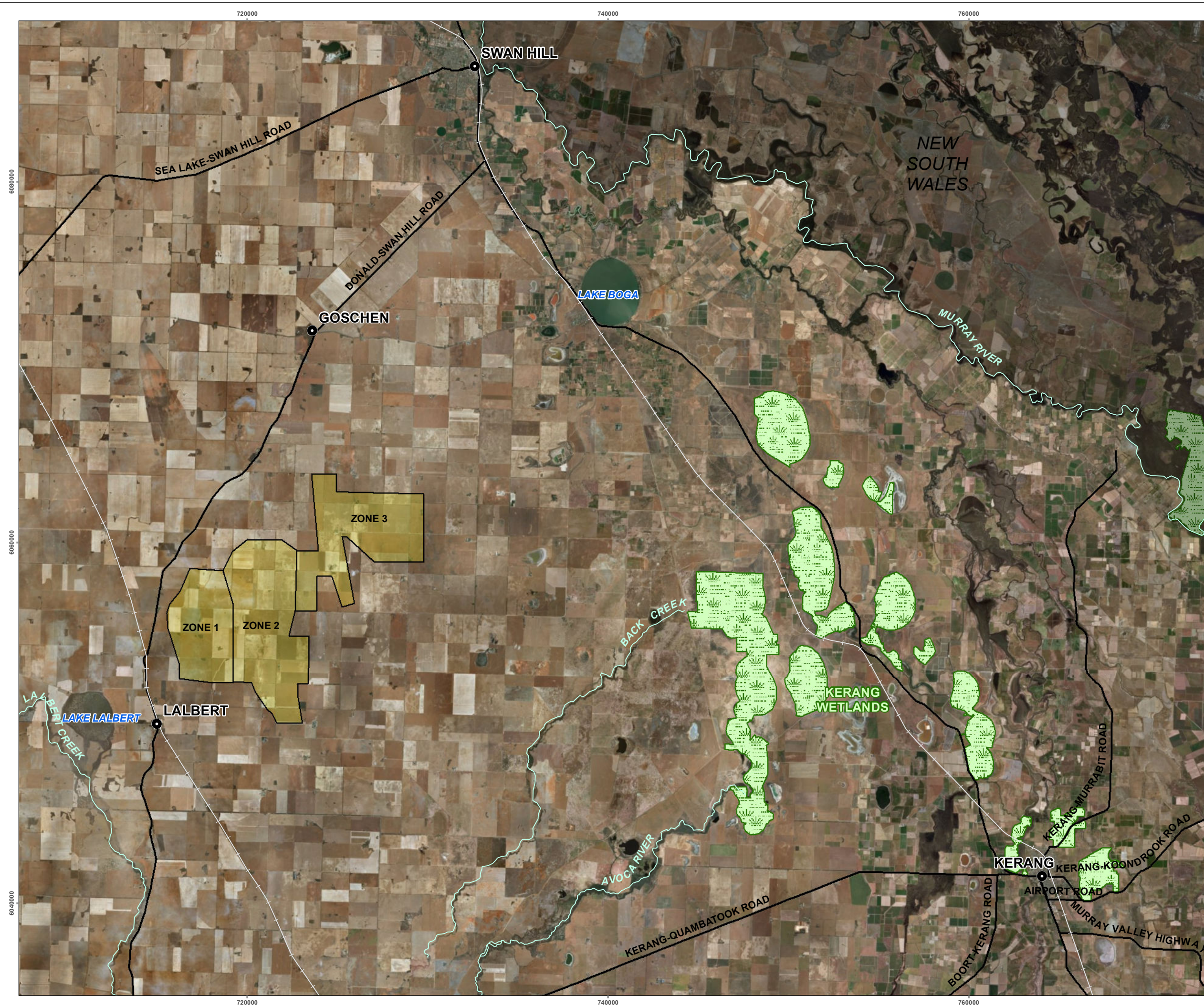


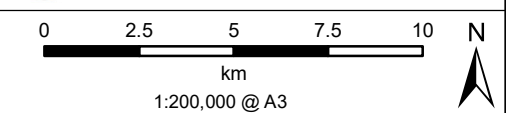
Figure 3: Geological Cross Section



LEGEND

- Targeted Mineralisation Zone
- RAMSAR Wetland

- IMAGERY BASE MAP, OPEN SOURCE ESRI
 - NOTE THAT POSITION ERRORS CAN BE >5M IN SOME AREAS



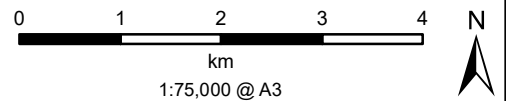
PROJECT GOSCHEN PROJECT	DATE 12/06/2018
HORIZONTAL DATUM AND PROJECTION GDA 1994 MGA Zone 54	

Figure 4
RAMSAR Wetlands



- LEGEND**
- Targeted Mineralisation Zone
 - Survey Area
 - Ecological Vegetation Classes**
 - Plains Savannah EVC 826
 - Ridged Plains Mallee EVC 96
 - Wooriner Mallee EVC 824
 - Black Box community
 - Mixed planted natives

- IMAGERY BASE MAP, OPEN SOURCE ESRI
 - ECOLOGICAL VEGETATION CLASSES, DECEMBER 2017
 - NOTE THAT POSITION ERRORS CAN BE >5M IN SOME AREAS



PROJECT GOSCHEN PROJECT	DATE 12/06/2018
HORIZONTAL DATUM AND PROJECTION GDA 1994 MGA Zone 54	

Figure 5
Ecological Vegetation Classes



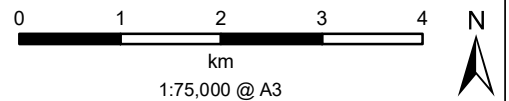
LEGEND

- Targeted Mineralisation Zone
- Survey Area

Preliminary Vegetation Quality Rating

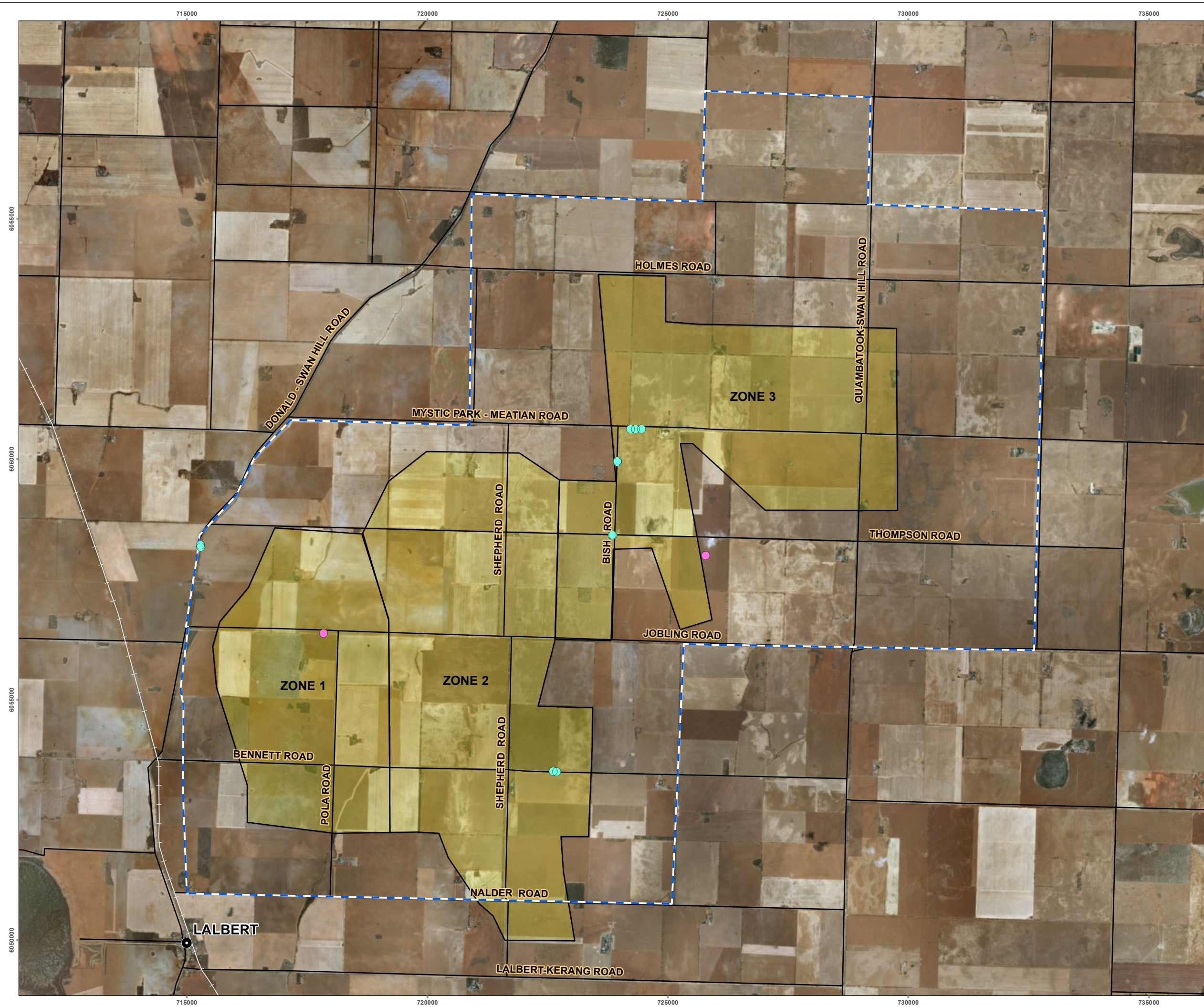
- High
- Moderate High
- Moderate
- Moderate Low
- Low
- Other

- IMAGERY BASE MAP, OPEN SOURCE ESRI
 - ECOLOGICAL VEGETATION CLASSES, FEBRUARY 2018
 - NOTE THAT POSITION ERRORS CAN BE >5M IN SOME AREAS



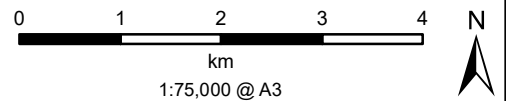
PROJECT GOSCHEN PROJECT	DATE 10/07/2018
HORIZONTAL DATUM AND PROJECTION GDA 1994 MGA Zone 54	

Figure 6
Vegetation Quality



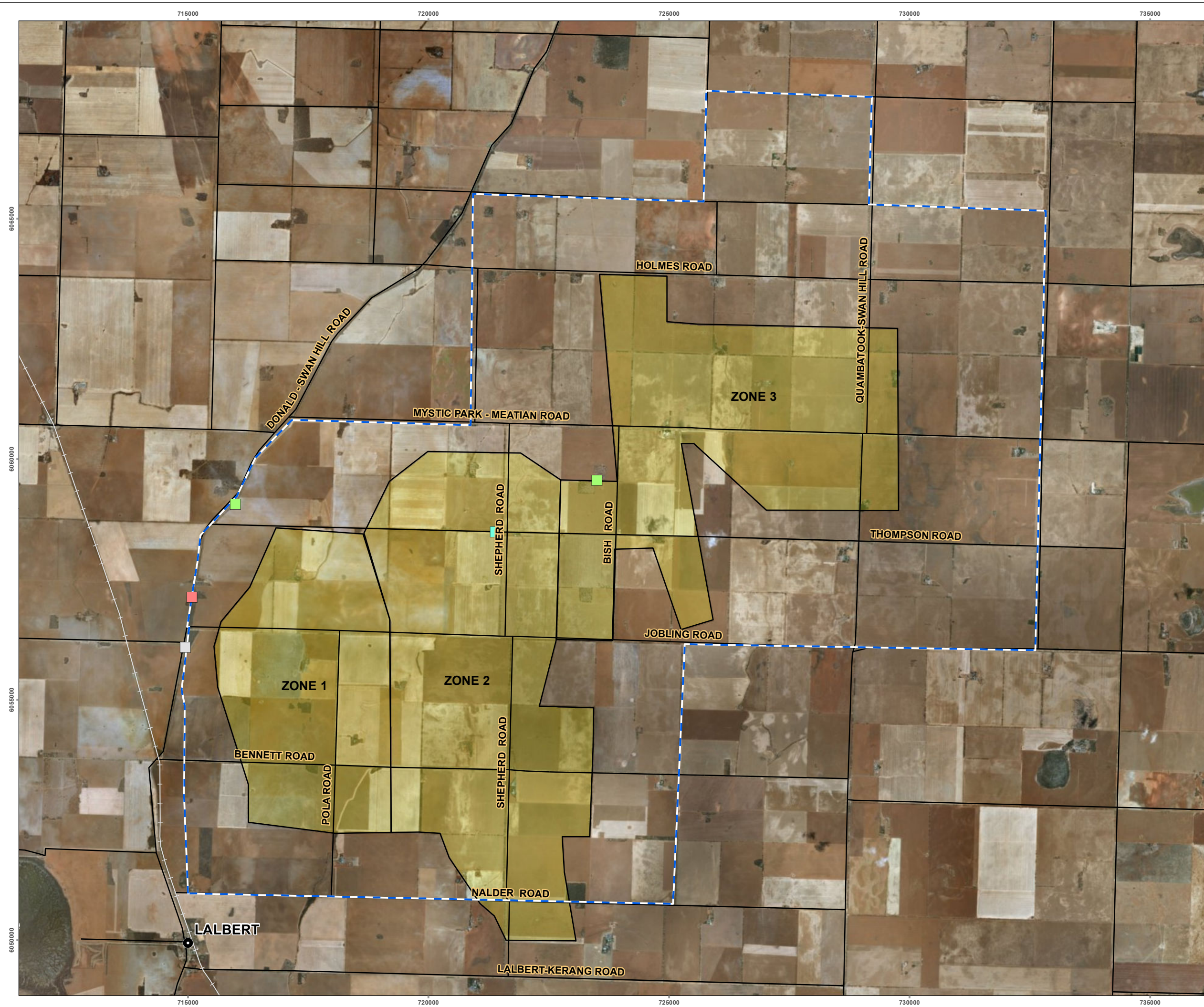
- LEGEND**
- Targeted Mineralisation Zone
 - Survey Area
 - Significant Flora
 - Acacia oswaldii*
 - Allocasuarina luehmannii* (x12)

- IMAGERY BASE MAP, OPEN SOURCE ESRI
 - SIGNIFICANT FLORA, FFG ACT SPECIES 7 MAY 2018
 - NOTE THAT POSITION ERRORS CAN BE >5M IN SOME AREAS



PROJECT GOSCHEN PROJECT	DATE 12/06/2018
HORIZONTAL DATUM AND PROJECTION GDA 1994 MGA Zone 54	

Figure 7
Significant Flora



LEGEND

- Targeted Mineralisation Zone
- Survey Area
- Significant Fauna**
- Black Falcon
- South-eastern Brown Treecreeper
- Common Bearded Dragon
- Superb Parrot

- IMAGERY BASE MAP, OPEN SOURCE ESRI
 - SIGNIFICANT FLORA, FFG ACT SPECIES 7 MAY 2018
 - NOTE THAT POSITION ERRORS CAN BE >5M IN SOME AREAS

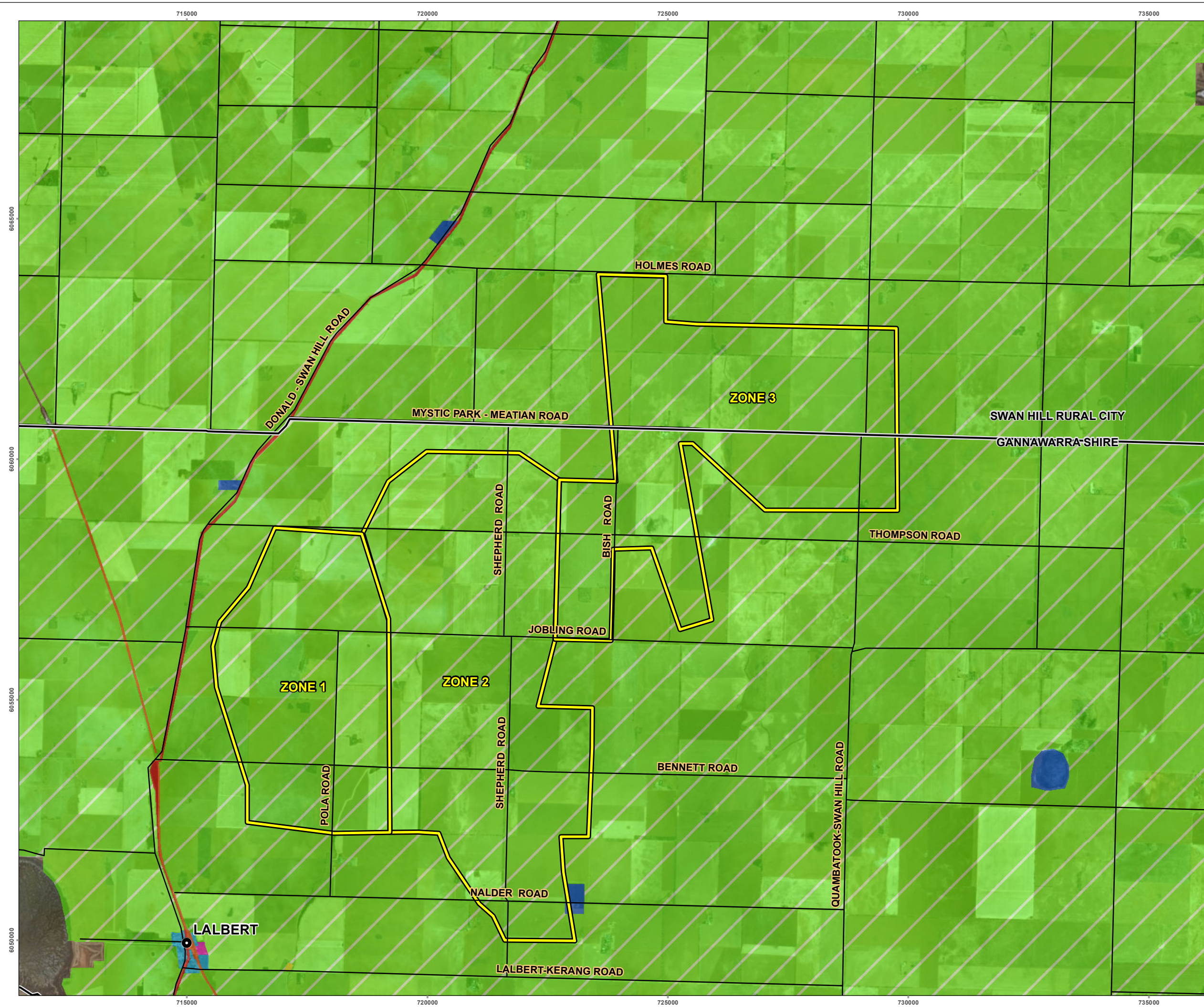
VHM EXPLORATION

0 1 2 3 4 N
 km
 1:75,000 @ A3



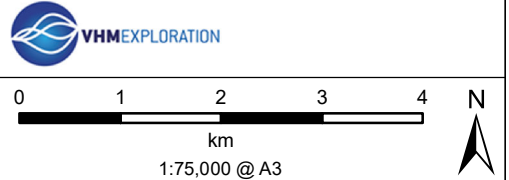
PROJECT GOSCHEN PROJECT	DATE 12/06/2018
HORIZONTAL DATUM AND PROJECTION GDA 1994 MGA Zone 54	

Figure 8
 State Significant Fauna



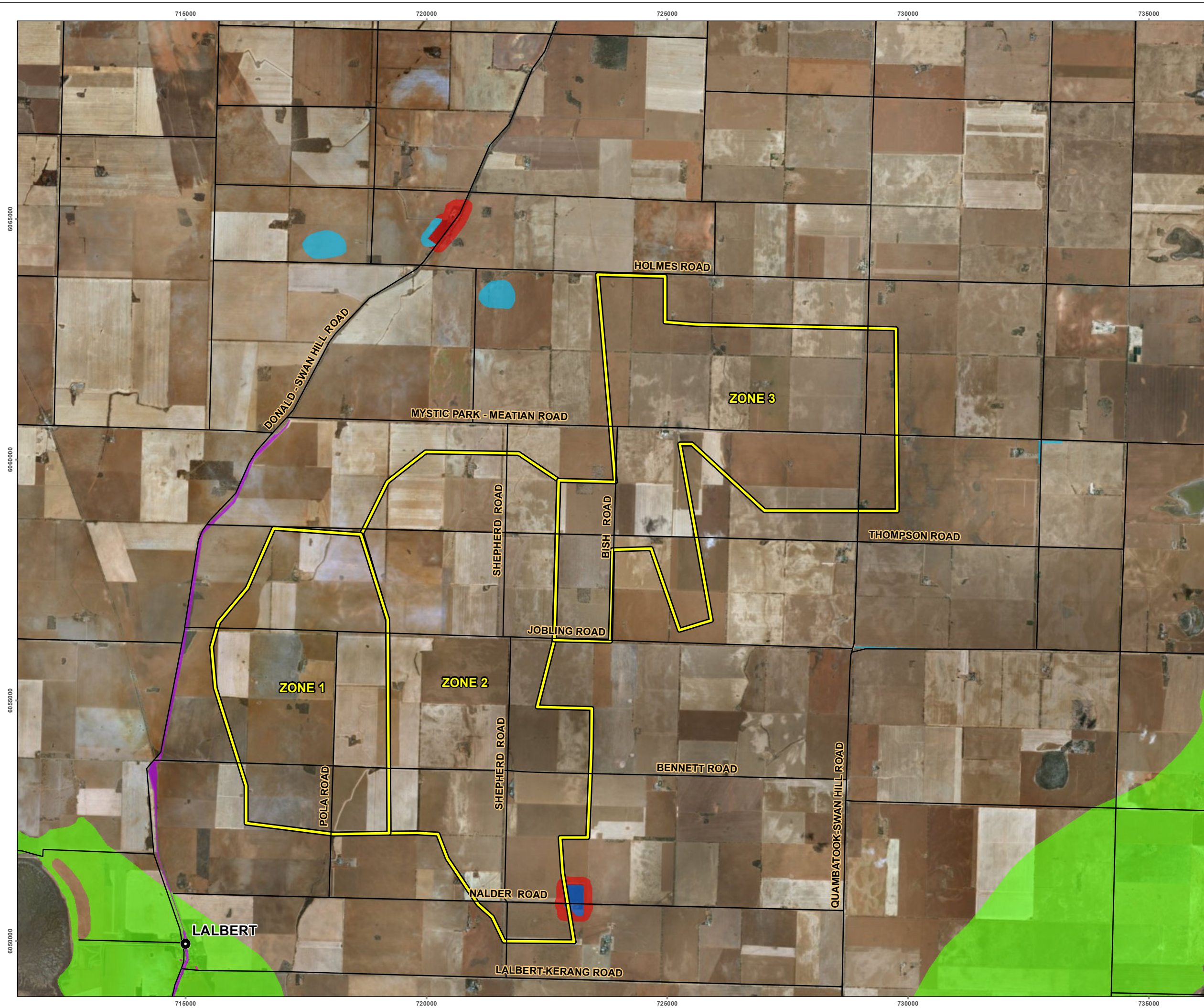
- LEGEND**
- Targeted Mineralisation Zone
 - Local Government Authority Boundary
 - Road
- Planning Scheme Zones**
- Township Zone
 - Farming Zone
 - Road Zone - Category 1
 - Public Conservation and Resource Zone
 - Public Park and Recreation Zone
 - Public Use Zone - Service and Utility
 - Public Use Zone - Transport

- IMAGERY BASE MAP, OPEN SOURCE ESRI
 - NOTE THAT POSITION ERRORS CAN BE >5M IN SOME AREAS




PROJECT GOSCHEN PROJECT	DATE 12/06/2018
HORIZONTAL DATUM AND PROJECTION GDA 1994 MGA Zone 54	

Figure 9
 Gannawarra Shire and Rural City of Swan Hill Planning Scheme Zones



- LEGEND**
-  Targeted Mineralisation Zone
 -  Road
 - Planning Scheme Overlays**
 -  Environmental Audit Overlay
 -  Environmental Significance Overlay - Schedule 2
 -  Environmental Significance Overlay - Schedule 4
 -  Vegetation Protection Overlay - Schedule 1
 -  Vegetation Protection Overlay - Schedule 2
 -  Bushfire Management Overlay

- IMAGERY BASE MAP, OPEN SOURCE ESRI
 - NOTE THAT POSITION ERRORS CAN BE >5M IN SOME AREAS

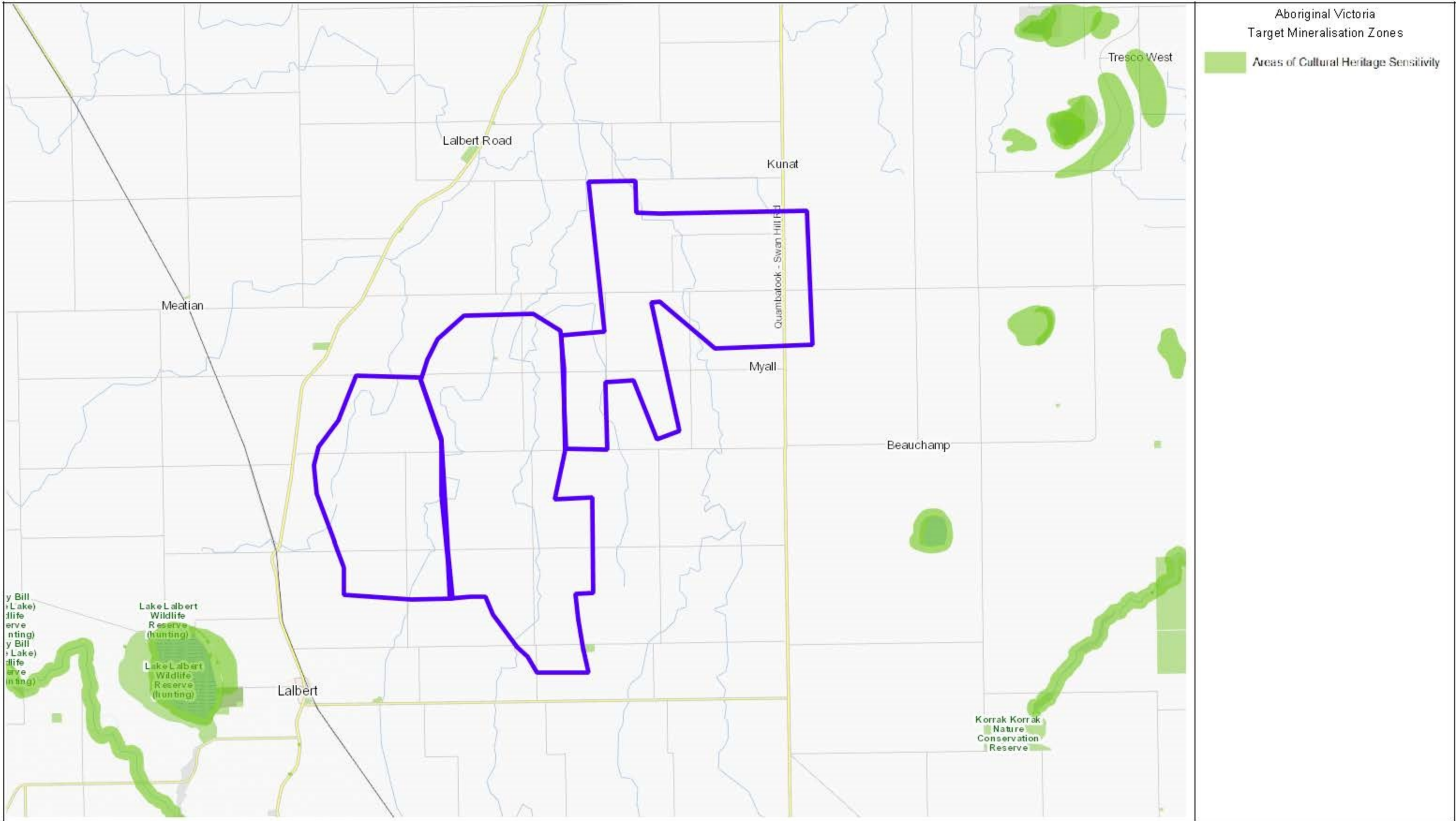


0 1 2 3 4 N
 km
 1:75,000 @ A3



PROJECT GOSCHEN PROJECT	DATE 12/06/2018
HORIZONTAL DATUM AND PROJECTION GDA 1994 MGA Zone 54	

Figure 10
 Gannawarra Shire and Rural City of Swan Hill Planning Scheme Overlays



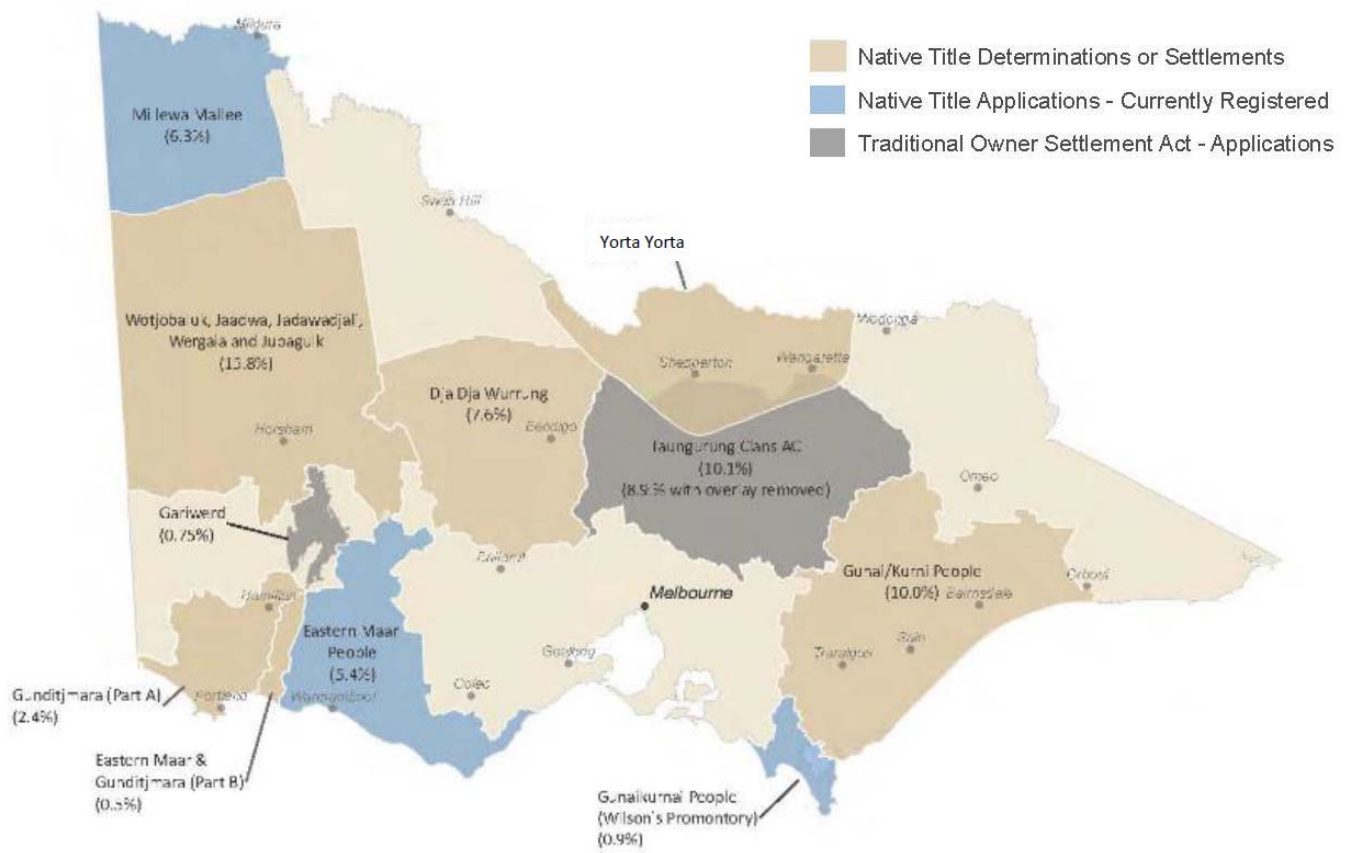

 Produced by Aboriginal Victoria for VHM
 

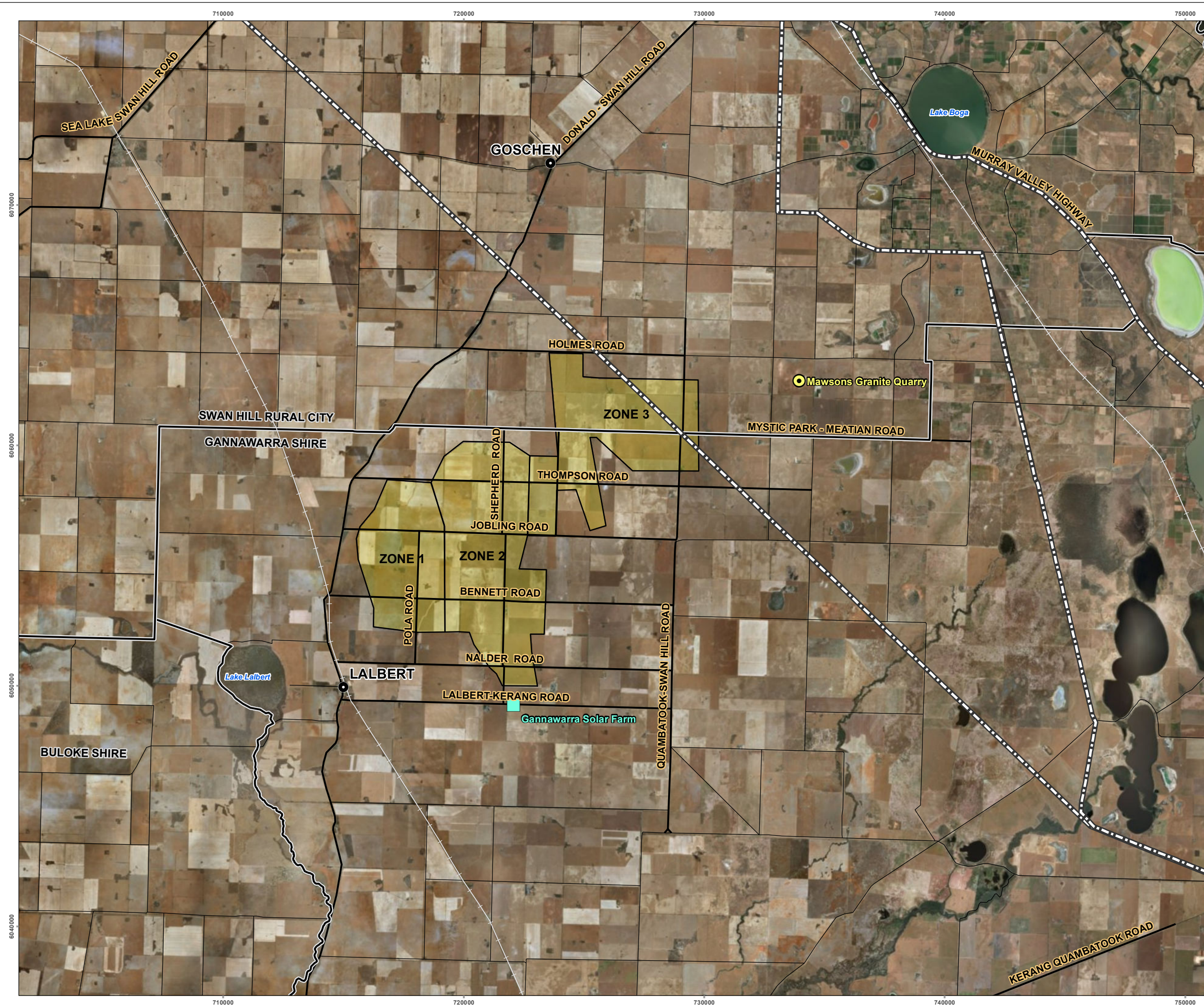

 Date: 11 July 2018

This document contains culturally sensitive information concerning the heritage of Victoria's Aboriginal communities, and cannot be included in any reports resulting from research associated with this document. This information is accurate at the date of production. However, the State of Victoria and its employees do not guarantee that the information in this document is without flaw of any kind or is wholly appropriate for your particular purposes and therefore disclaims all liability for any error, loss or other consequence which may arise from you relying on this information.

Figure 11: Cultural Heritage Sites

Figure 12: Map of Claims and Determinations in Victoria





- LEGEND**
- Targeted Mineralisation Zone
 - Transmission Line
 - Railways
 - Road
 - Gannawarra Solar Farm
 - Mawsons Granite Quarry

- IMAGERY BASE MAP, OPEN SOURCE ESRI
 - NOTE THAT POSITION ERRORS CAN BE >5M IN SOME AREAS

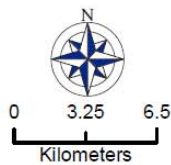
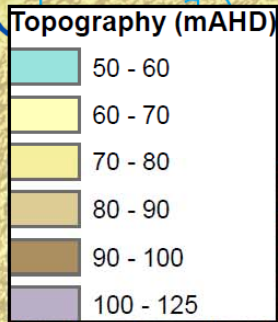
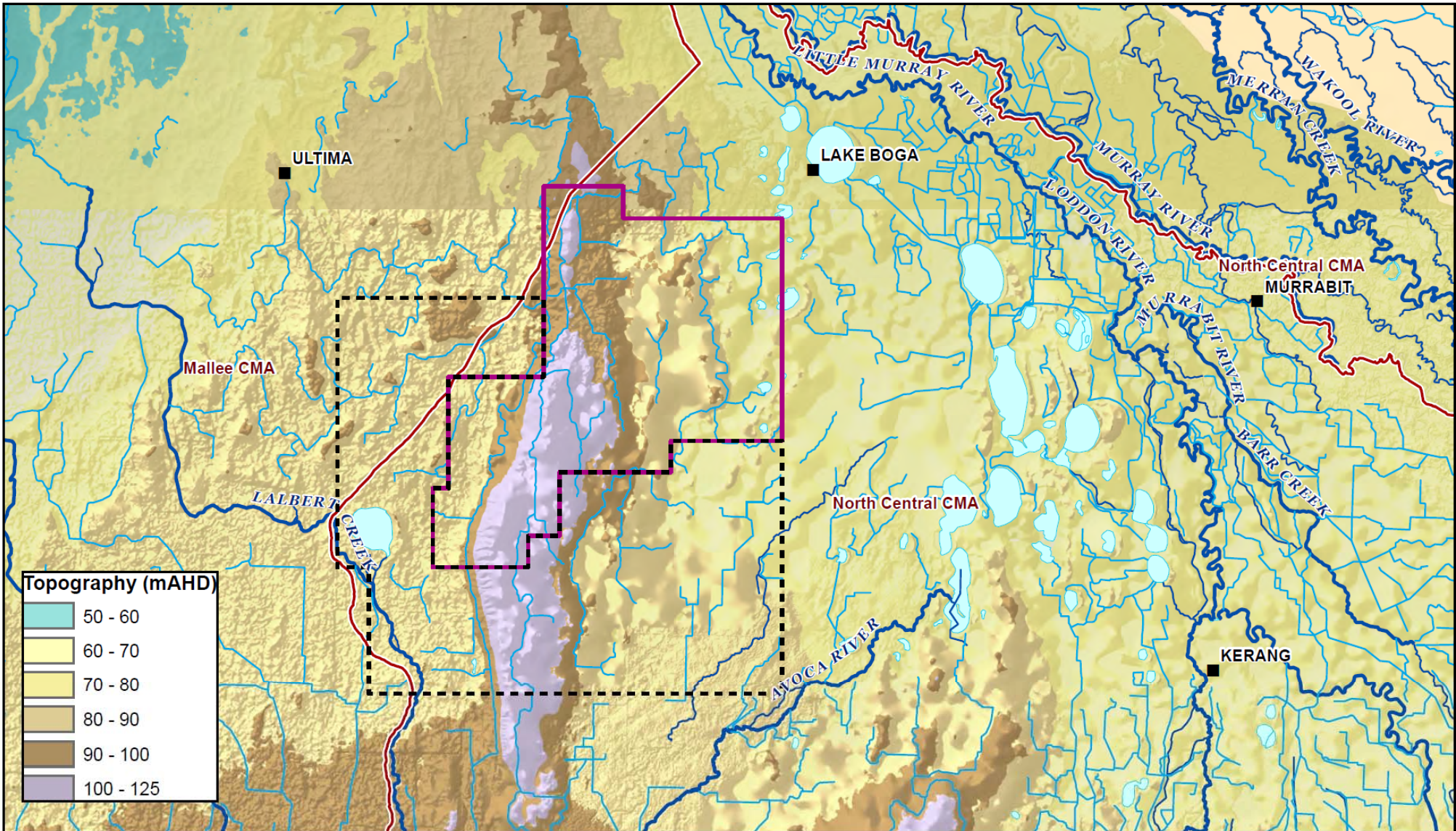
VHM EXPLORATION

1:150,000 @ A3



PROJECT GOSCHEN PROJECT	DATE 31/08/2018
HORIZONTAL DATUM AND PROJECTION GDA 1994 MGA Zone 54	

Figure 13
Infrastructure



Scale @ A4 1:325,000
 Date: 31/05/18
 Drawn: ID

Legend

--- EL6419

--- EL5520

--- Catchment management authorities (CMA)

■ Localities

--- Canal

--- Minor watercourse

--- Major watercourse

--- Lake

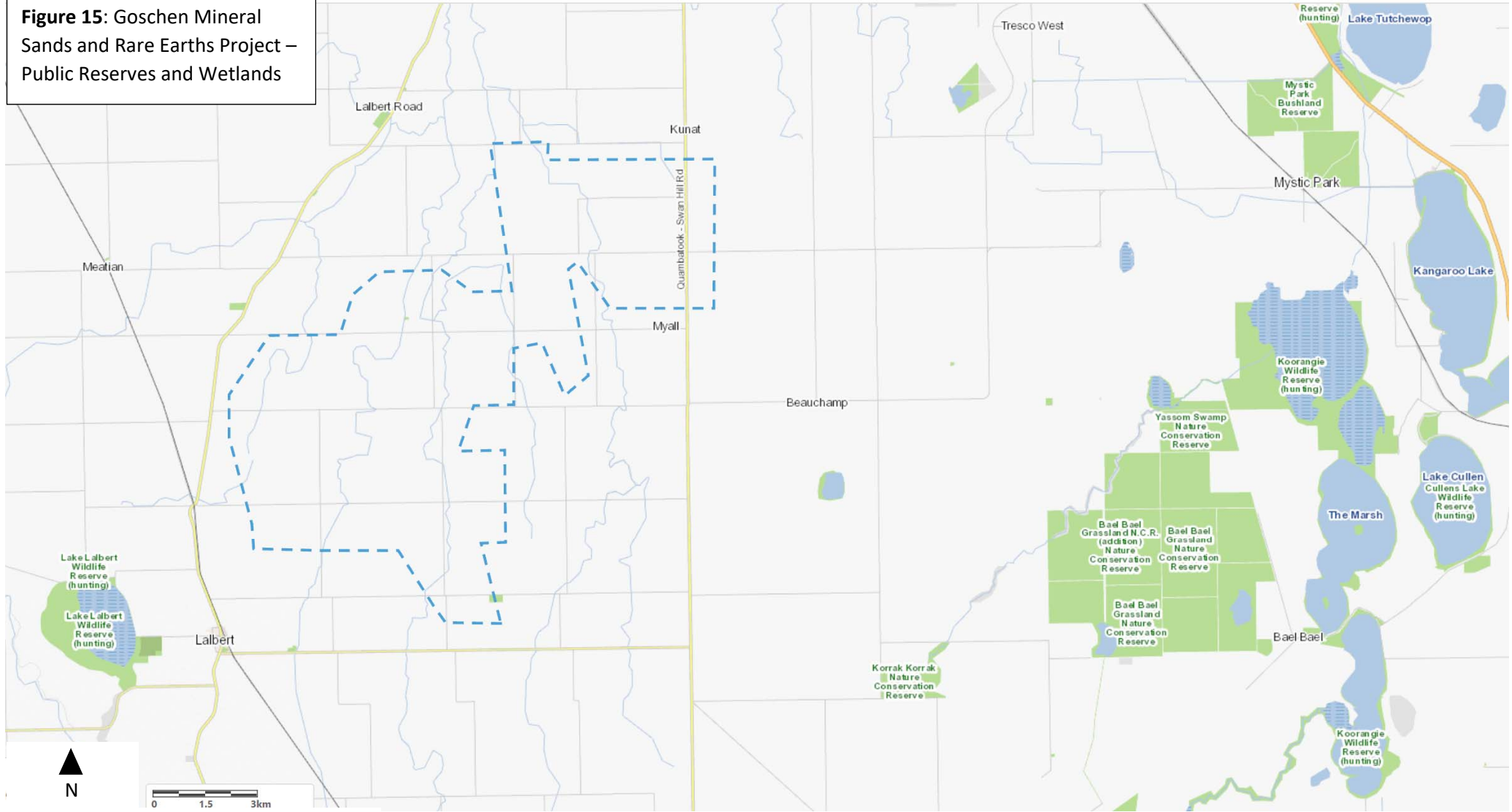
Figure 14

Topography

DATA SOURCE
 VICMAP, 2017
 Geofabric Product Suite V2.1.1 Bureau of Meteorology
 (BoM) 2011; 1 Second SRTM v1.0 © Commonwealth of
 Australia (Geoscience Australia) 2011.



Figure 15: Goschen Mineral Sands and Rare Earths Project – Public Reserves and Wetlands



- - - - Target Mineralisation Zone
- Reserves
- Wetlands
- Roads