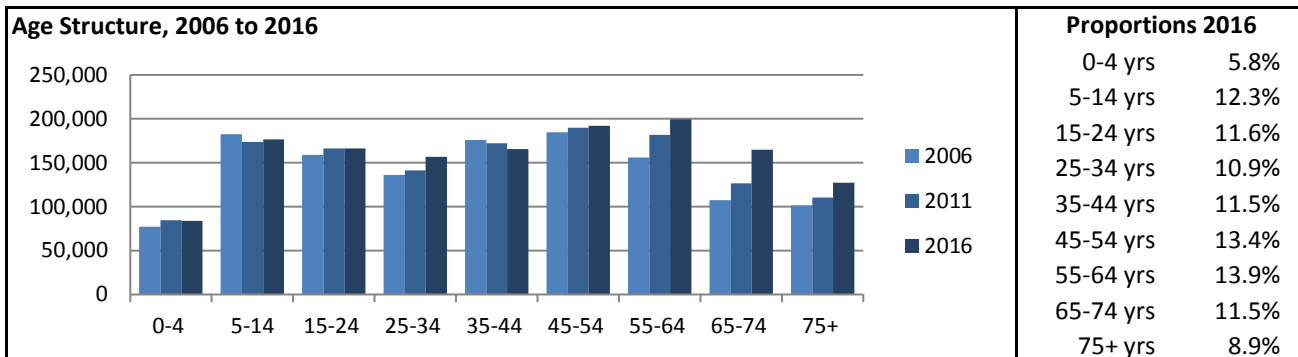
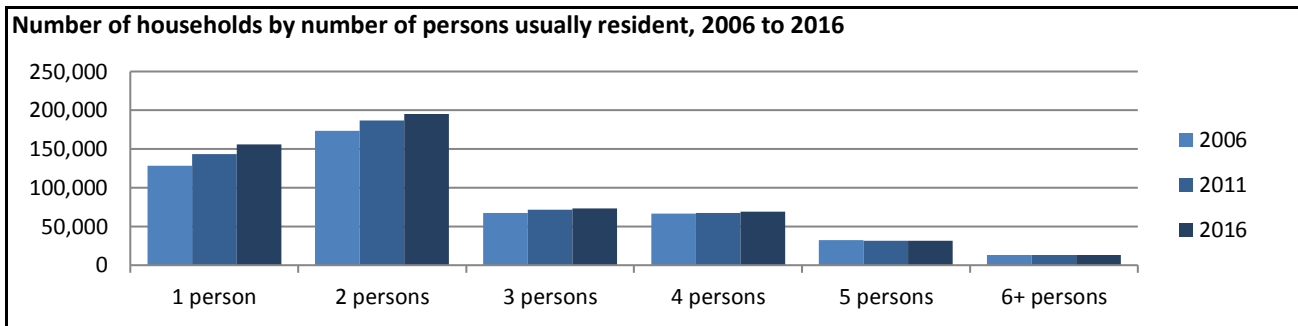


## Rest of Victoria GCCSA

| Count of persons<br>by Usual Residence | Total 2006 | 1,280,035 | Period  | 5-year change   | Annual rate |
|--|------------|-----------|---------|-----------------|-------------|
|  | Total 2011 | 1,345,717 | 2006-11 | 65,682 increase | 1.0% p.a.   |
|  | Total 2016 | 1,433,818 | 2011-16 | 88,101 increase | 1.3% p.a.   |



|  | 2006  | 2011  | 2016  |
|--|-------|-------|-------|
| Median population age in years             | 40    | 41    | 43    |
| Proportion indigenous persons              | 1.2%  | 1.5%  | 1.6%  |
| Proportion Australian citizens             | 91.4% | 90.9% | 88.2% |
| Proportion born in Australia               | 84.4% | 84.3% | 80.7% |
| Proportion born elsewhere                  | 9.9%  | 10.6% | 11.0% |
| Proportion speaking English only at home   | 91.2% | 90.4% | 86.6% |
| Proportion speaking other language at home | 4.6%  | 5.3%  | 6.0%  |



|  | 2006  | 2011  | 2016  |
|--|-------|-------|-------|
| Average household size                 | 2.5   | 2.4   | 2.4   |
| Average persons per bedroom            | 0.8   | 0.8   | 0.8   |
| Proportion of households with children | 39.2% | 37.5% | 35.4% |
| Proportion couple-only households      | 27.7% | 27.8% | 27.1% |
| Proportion lone person households      | 25.7% | 26.8% | 27.0% |
| Proportion group households            | 2.8%  | 2.9%  | 2.9%  |
| Proportion of dwellings rented         | 22.8% | 24.1% | 23.9% |
| Proportion owned with mortgage         | 39.1% | 37.4% | 35.7% |
| Proportion owned outright              | 31.8% | 32.1% | 31.2% |