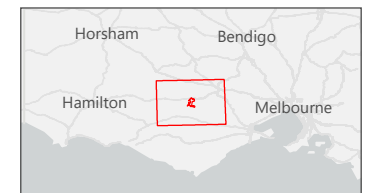
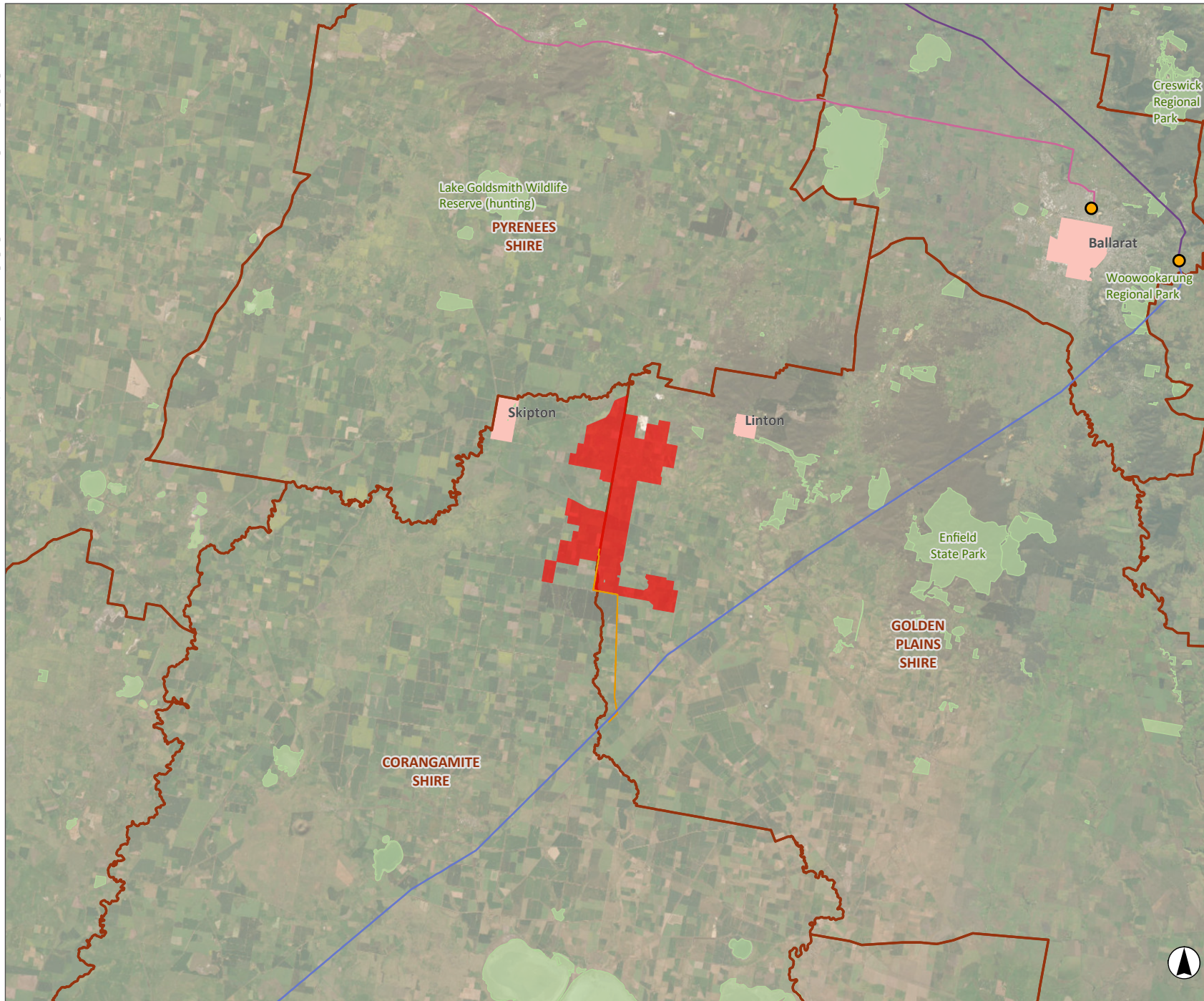


FIGURE 1

Project Location Context

Legend

- Terminal Station
- 66kV Transmission Line: Ararat - Ballarat North
- 220kV Transmission Line: Terang - Ballarat
- 220kV Transmission Line: Ballarat - Waubra
- Underground Transmission Line
- Wind Farm Site
- LGA Boundary
- Township
- Parks and Reserves



0 2 4  
Kilometres

Scale 1:400,000 at A4  
GDA2020 MGA Zone 54

This document and the information are subject to Terms and Conditions and Umwelt (Australia) Pty Ltd ("Umwelt") Copyright in the drawings, information and data recorded ("the information") is the property of Umwelt. This document and the information are solely for the use of the authorized recipient and this document may not be used, copied or reproduced in whole or part for any purpose other than that which it was supplied by Umwelt. Umwelt makes no representation, undertakes no duty and accepts no responsibility to any third party who may use or rely upon this document or the information.  
APPROVED FOR AND ON BEHALF OF Umwelt

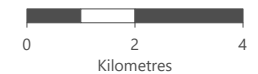
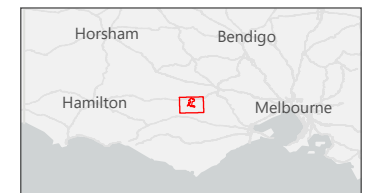


# FIGURE 2

## Project Location

### Legend

- Wind Turbines
- Water Tank Location
- Overhead Electrical Reticulation Poles
- Overhead Electrical Reticulation
- Underground Electrical Reticulation
- Access Tracks
- Underground Transmission Line
- Ballarat to Terang 220 kV Existing Transmission
- Pittong Kaolin Mine
- HVP Plantation
- Berrybank Substation
- Site Substation
- Site Office Compound
- Laydown Areas
- Hardstand
- Battery 150MW
- Batching Plant
- Wind Farm Site
- Township



Scale 1:140,000 at A4  
GDA2020 MGA Zone 54

This document and the information are subject to Terms and Conditions and Umwelt (Australia) Pty Ltd ("Umwelt") Copyright in the drawings, information and data recorded ("the information") is the property of Umwelt. This document and the information are solely for the use of the authorized recipient and this document may not be used, copied or reproduced in whole or part for any purpose other than that which it was supplied by Umwelt. Umwelt makes no representation, undertakes no duty and accepts no responsibility to any third party who may use or rely upon this document or the information.  
APPROVED FOR AND ON BEHALF OF Umwelt

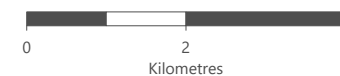
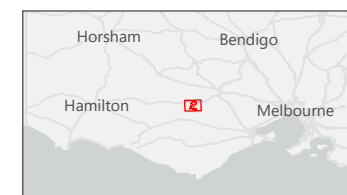
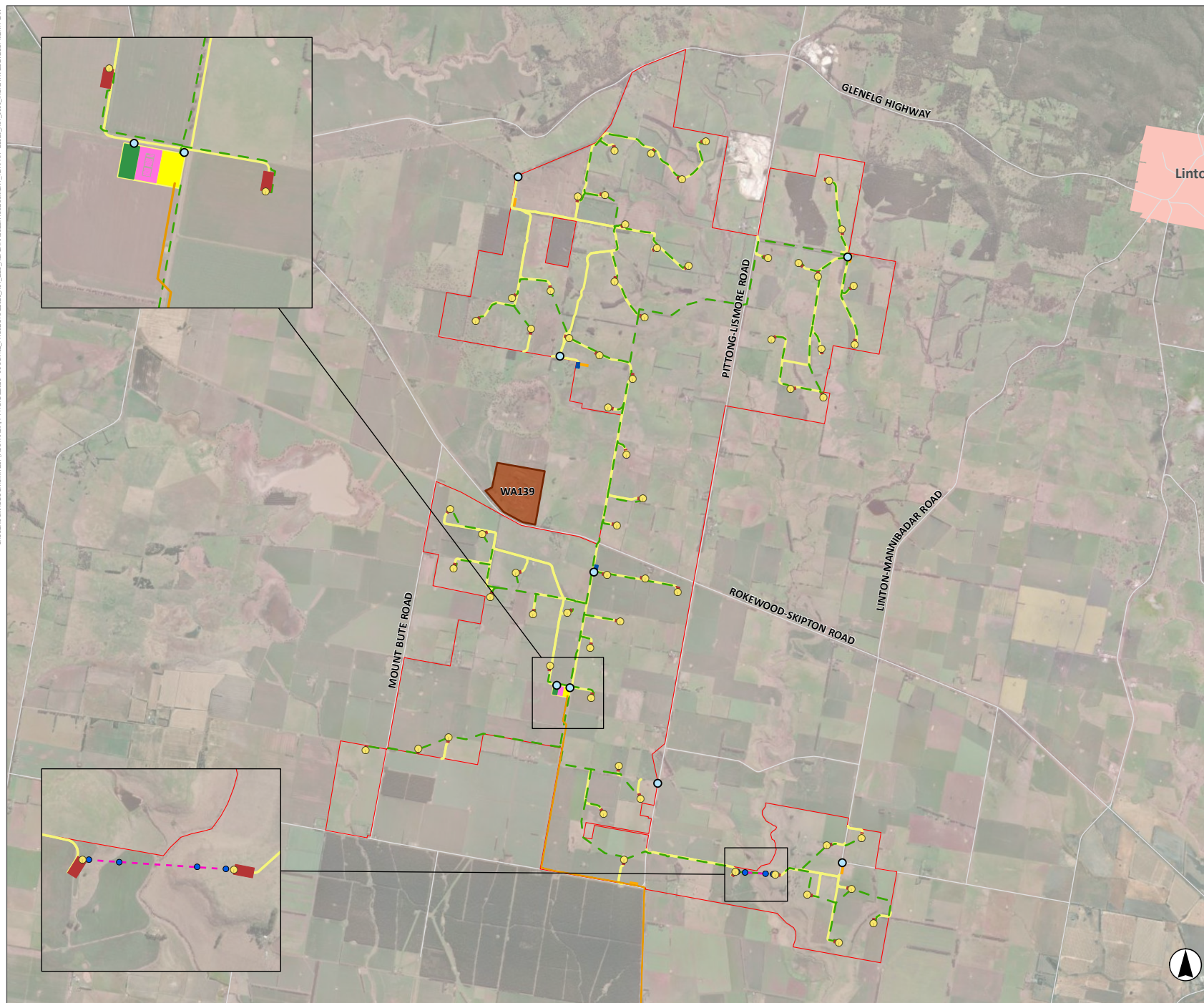


# FIGURE 3

## Indicative Wind Farm Development Plan

### Legend

- Wind Turbines
- Water Tank Location
- Overhead Electrical Reticulation Poles
- Overhead Electrical Reticulation
- Underground Electrical Reticulation
- Access Tracks
- Underground Transmission Line
- Site Substation
- Site Office Compound
- Laydown Areas
- Hardstand
- Battery 150MW
- Batching Plant
- Wind Farm Site
- Local Quarry
- Township



Scale 1:95,000 at A4  
GDA2020 MGA Zone 54

This document and the information are subject to Terms and Conditions and Umwelt (Australia) Pty Ltd ("Umwelt") Copyright in the drawings, information and data recorded ("the information") is the property of Umwelt. This document and the information are solely for the use of the authorized recipient and this document may not be used, copied or reproduced in whole or part for any purpose other than that which it was supplied by Umwelt. Umwelt makes no representation, undertakes no duty and accepts no responsibility to any third party who may use or rely upon this document or the information.  
APPROVED FOR AND ON BEHALF OF Umwelt

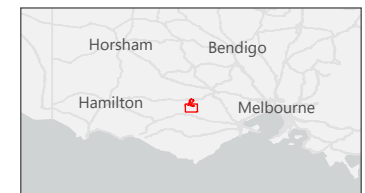


# FIGURE 4

## Transmission Line Route

### Legend

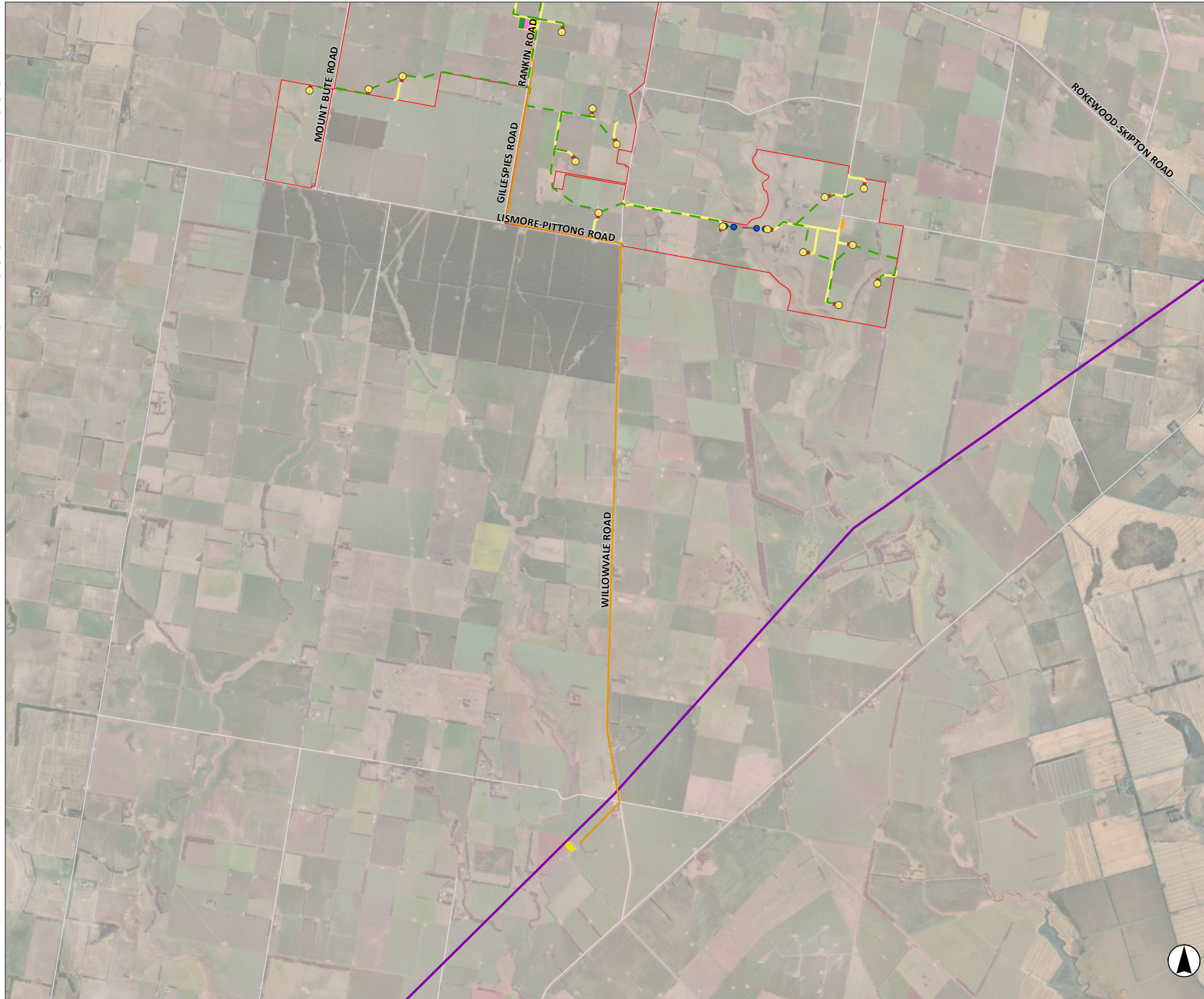
- Wind Turbines
- Overhead Electrical Reticulation Poles
- Overhead Electrical Reticulation
- Underground Electrical Reticulation
- Ballarat to Terang 220 kV Existing Transmission
- Access Tracks
- Underground Transmission Line
- Site Substation
- Site Office Compound
- Laydown Areas
- Hardstand
- Battery 150MW
- Wind Farm Site
- Berrybank Substation



0 1 2  
Kilometres

Scale 1:85,000 at A4  
GDA2020 MGA Zone 54

This document and the information are subject to Terms and Conditions of Umwelt (Australia) Pty Ltd ("Umwelt"). Copyright in the drawings, information and data recorded ("the information") is the property of Umwelt. This document and the information are solely for the use of the authorized recipient and this document may not be used, copied or reproduced in whole or part for any purpose other than that which it was supplied by Umwelt. Umwelt makes no representation, undertakes no duty and accepts no responsibility to any third party who may use or rely upon this document or the information.  
APPROVED FOR AND ON BEHALF OF Umwelt



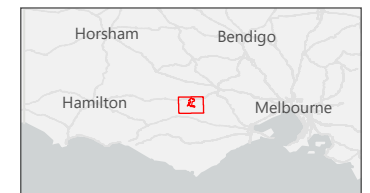
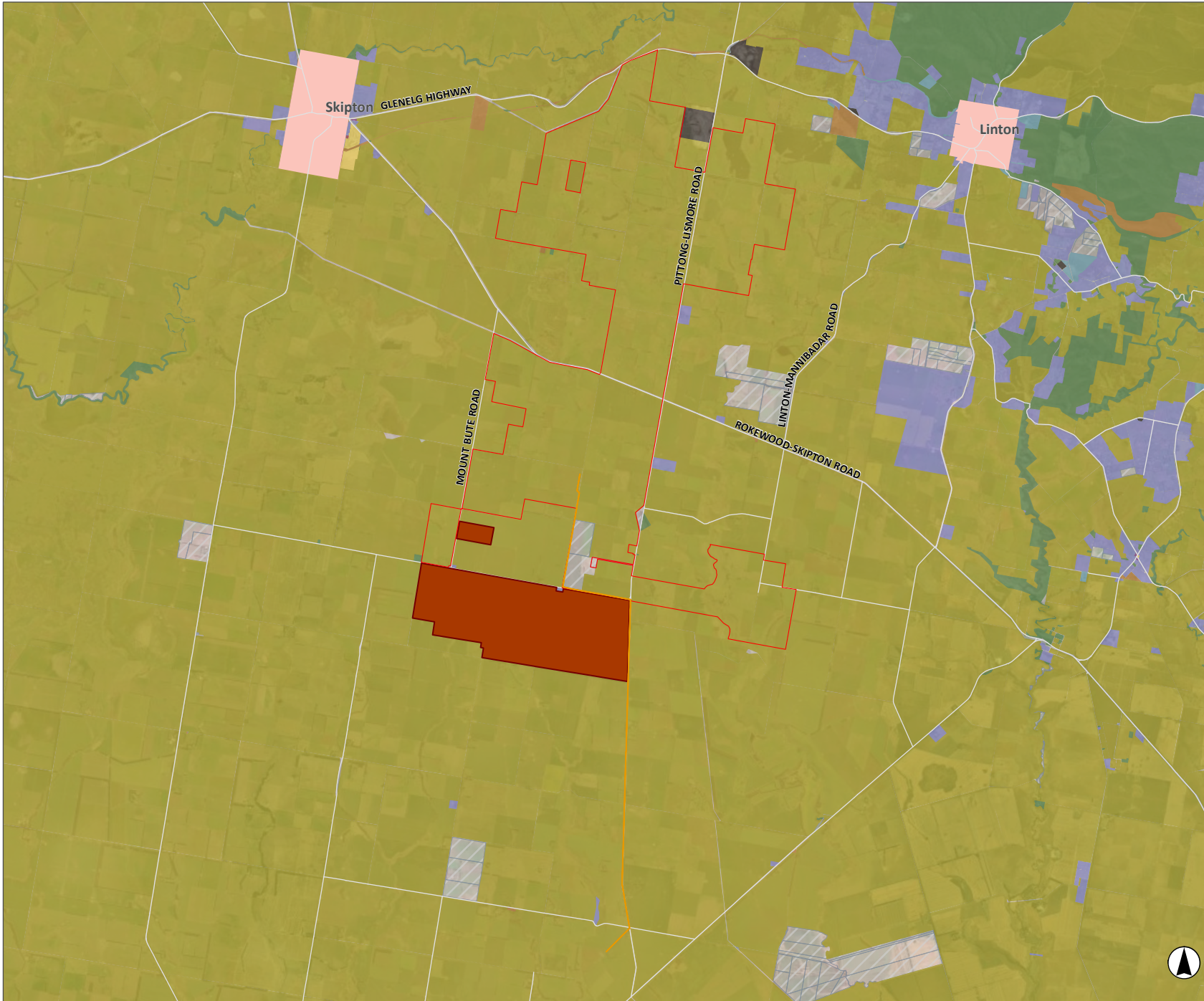


**FIGURE 5**

## Land use within the Project Site

### Legend

- Underground Transmission Line
- Wind Farm Site
- Township
- HVP Plantation
- Land Use Primary 2014
- 0 - Non-active assessments
- 1 - Rural Living
- 2 - Commercial
- 3 - Industrial
- 4 - Extractive Industry
- 5 - Primary Production
- 6 - Infrastructure/Utilities
- 7 - Community Services
- 8 - Sport, Recreation and Culture
- 9 - Conservation Reserves



0 1 2  
Kilometres

Scale 1:145,000 at A4  
GDA2020 MGA Zone 54

This document and the information are subject to Terms and Conditions and Umwelt (Australia) Pty Ltd ("Umwelt"). Copyright in the drawings, information and data recorded ("the information") is the property of Umwelt. This document and the information are solely for the use of the authorized recipient and this document may not be used, copied or reproduced in whole or part for any purpose other than that which it was supplied by Umwelt. Umwelt makes no representation, undertakes no duty and accepts no responsibility to any third party who may use or rely upon this document or the information.  
APPROVED FOR AND ON BEHALF OF Umwelt

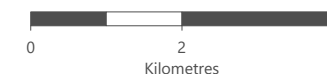
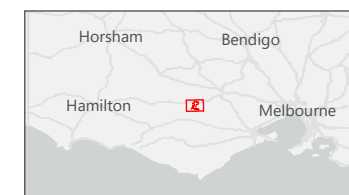
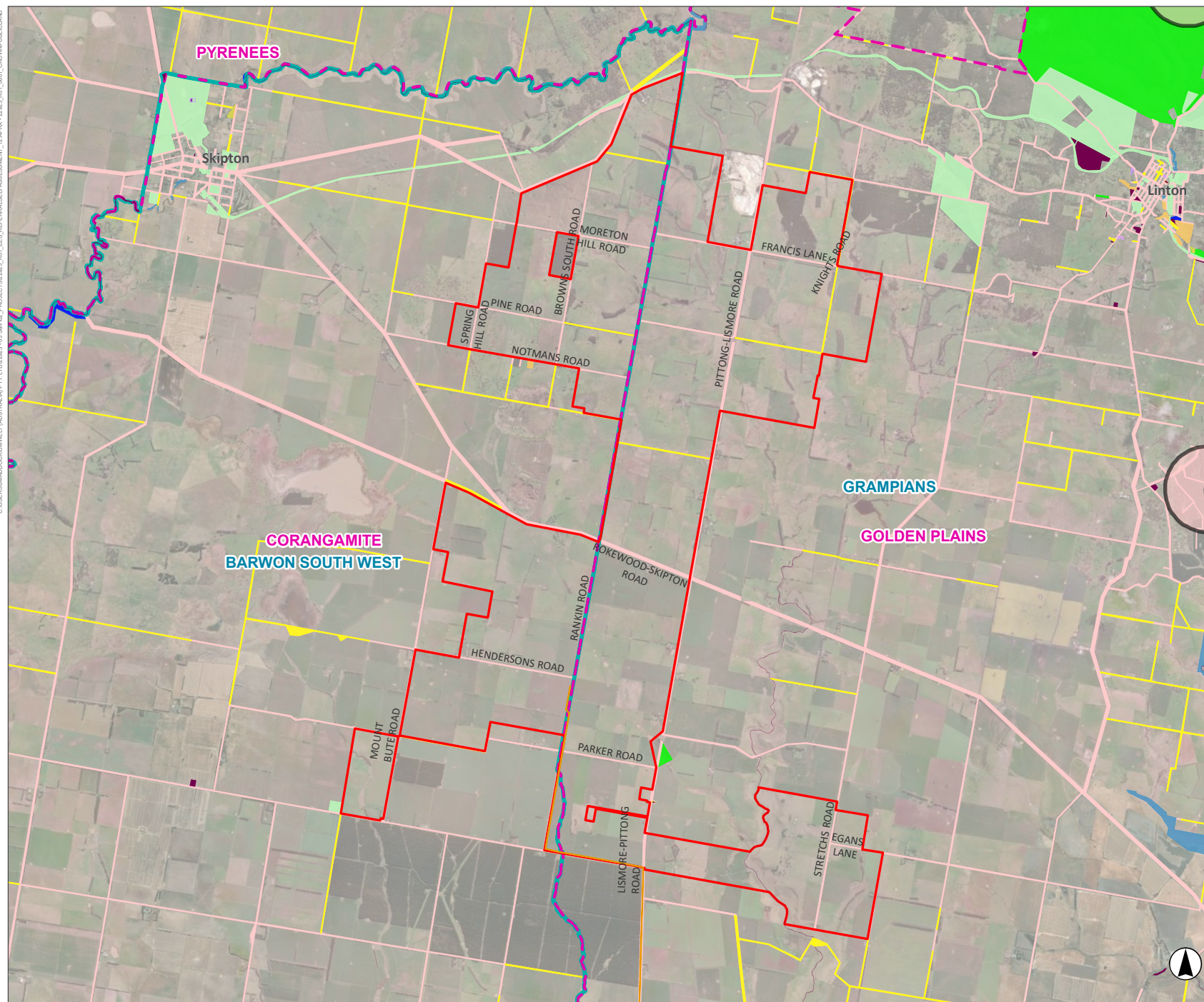


**FIGURE 6.1**

# Crown/Public Land

## Legend

- ▬ Wind Farm Site
- ▬ Underground Transmission Line
- ▬ DEECA region boundary
- ▬ LGA Boundary
- Temporary Apiary Rights
- 800
- ▬ Delegated Lease
- ▬ Delegated Licence
- ▬ Delegated Management Reserve
- ▬ Direct management Reserve
- ▬ General Licence
- ▬ Government Road
- ▬ Grazing Licence
- ▬ Riparian Management Licence
- ▬ Unused Road Licence
- ▬ Water Frontage Licence
- ▬ Uncategorised Public Land



Scale 1:100,000 at A4  
GDA2020 MGA Zone 54

This document and the information are subject to Terms and Conditions and Umwelt (Australia) Pty Ltd ("Umwelt"). Copyright in the drawings, information and data recorded ("the information") is the property of Umwelt. This document and the information are solely for the use of the authorized recipient and this document may not be used, copied or reproduced in whole or part for any purpose other than that which it was supplied by Umwelt. Umwelt makes no representation, undertakes no duty and accepts no responsibility to any third party who may use or rely upon this document or the information.  
APPROVED FOR AND ON BEHALF OF Umwelt

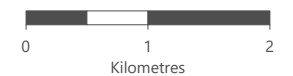
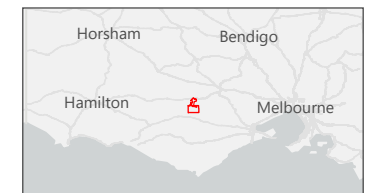
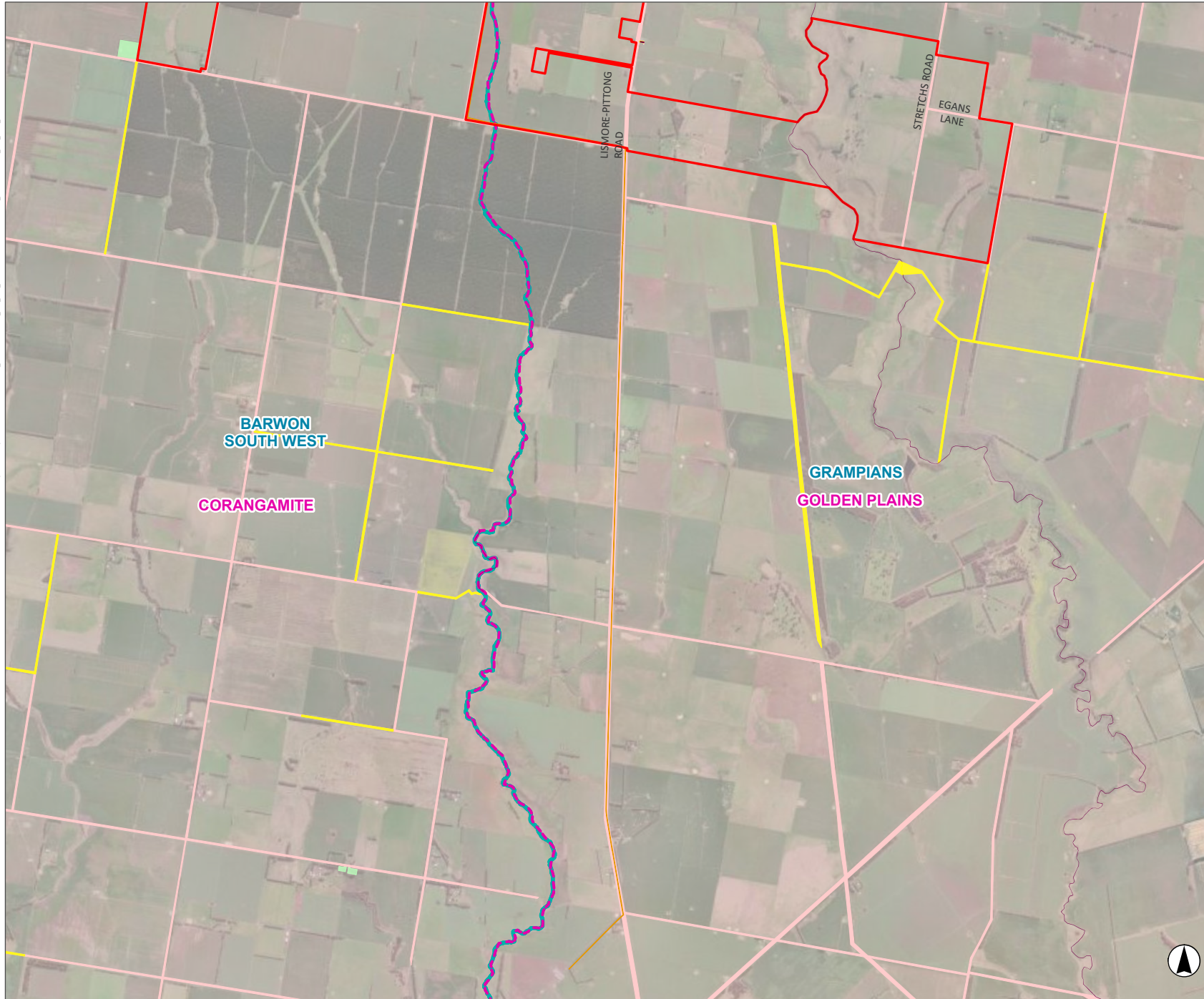


**FIGURE 6.2**

# Crown/Public Land - Transmission Line

## Legend

- Underground transmission line
- Wind Farm Site
- DEECA region boundary
- LGA Boundary
- Delegated Management Reserve
- Government Road
- Government Road
- Unused Road Licence
- Uncategorised Public Land



Scale 1:62,000 at A4  
GDA2020 MGA Zone 54

This document and the information are subject to Terms and Conditions and Umwelt (Australia) Pty Ltd ("Umwelt") Copyright in the drawings, information and data recorded ("the information") is the property of Umwelt. This document and the information are solely for the use of the authorized recipient and this document may not be used, copied or reproduced in whole or part for any purpose other than that which it was supplied by Umwelt. Umwelt makes no representation, undertakes no duty and accepts no responsibility to any third party who may use or rely upon this document or the information.  
APPROVED FOR AND ON BEHALF OF Umwelt

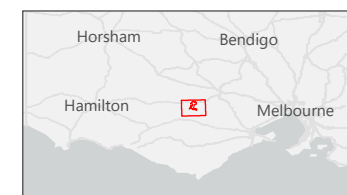


# FIGURE 7

## Public Land and Existing Assets

### Legend

- Wind Farm Site
- Underground Transmission Line
- Mineral Tenement
- Ballarat to Terang 220 kV Existing Transmission
- HVP Plantation
- Township
- Pittong Kaolin Mine
- Public Land Management**
  - Community Use Area
  - Earth Resources
  - Historic and Cultural Features Reserve
  - Natural Features Reserve
  - Nature Conservation Reserve
  - Other
  - Plantation
  - Services and Utilities
  - State Forest
  - Uncategorised Public Land
  - Water Production



0 1 2  
Kilometres

Scale 1:140,000 at A4  
GDA2020 MGA Zone 54

This document and the information are subject to Terms and Conditions and Umwelt (Australia) Pty Ltd ("Umwelt") Copyright in the drawings, information and data recorded ("the information") is the property of Umwelt. This document and the information are solely for the use of the authorized recipient and this document may not be used, copied or reproduced in whole or part for any purpose other than that which it was supplied by Umwelt. Umwelt makes no representation, undertakes no duty and accepts no responsibility to any third party who may use or rely upon this document or the information.  
APPROVED FOR AND ON BEHALF OF Umwelt



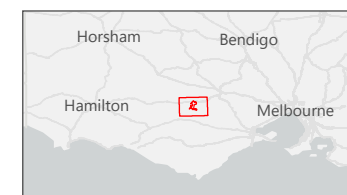
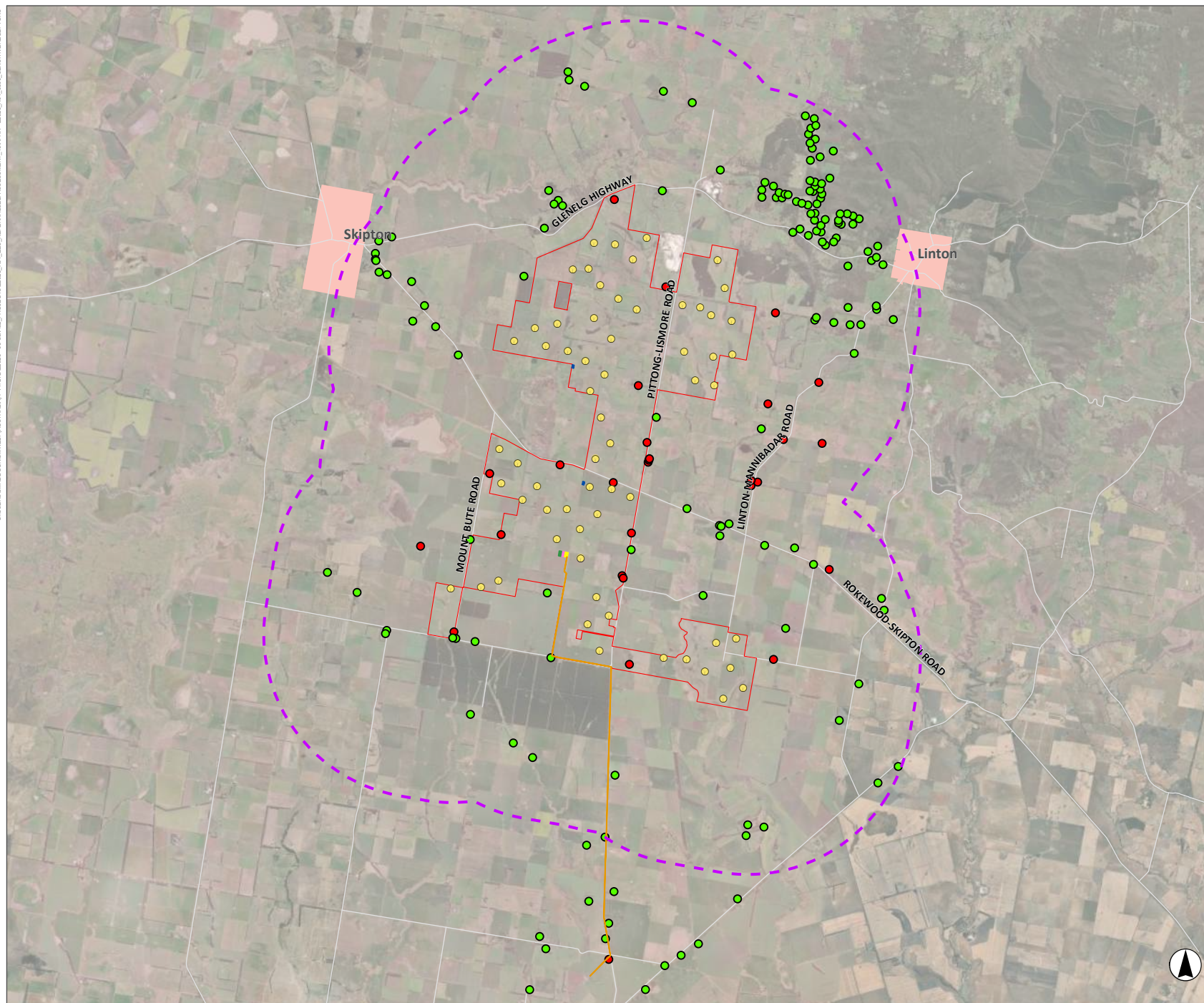
# FIGURE 8

## Sensitive Receptors

### Legend

#### Status

- Involved Landholder
- Non-involved Landholder
- Wind Turbines
- Underground Transmission Line
- Wind Farm Site
- Site Envelope Buffer 5km
- Site Substation
- Site Office Compound
- Battery 150MW
- Batching Plant
- Township



Scale 1:165,000 at A4  
GDA2020 MGA Zone 54

This document and the information are subject to Terms and Conditions and Umwelt (Australia) Pty Ltd ("Umwelt") Copyright in the drawings, information and data recorded ("the information") is the property of Umwelt. This document and the information are solely for the use of the authorized recipient and this document may not be used, copied or reproduced in whole or part for any purpose other than that which it was supplied by Umwelt. Umwelt makes no representation, undertakes no duty and accepts no responsibility to any third party who may use or rely upon this document or the information.  
APPROVED FOR AND ON BEHALF OF Umwelt

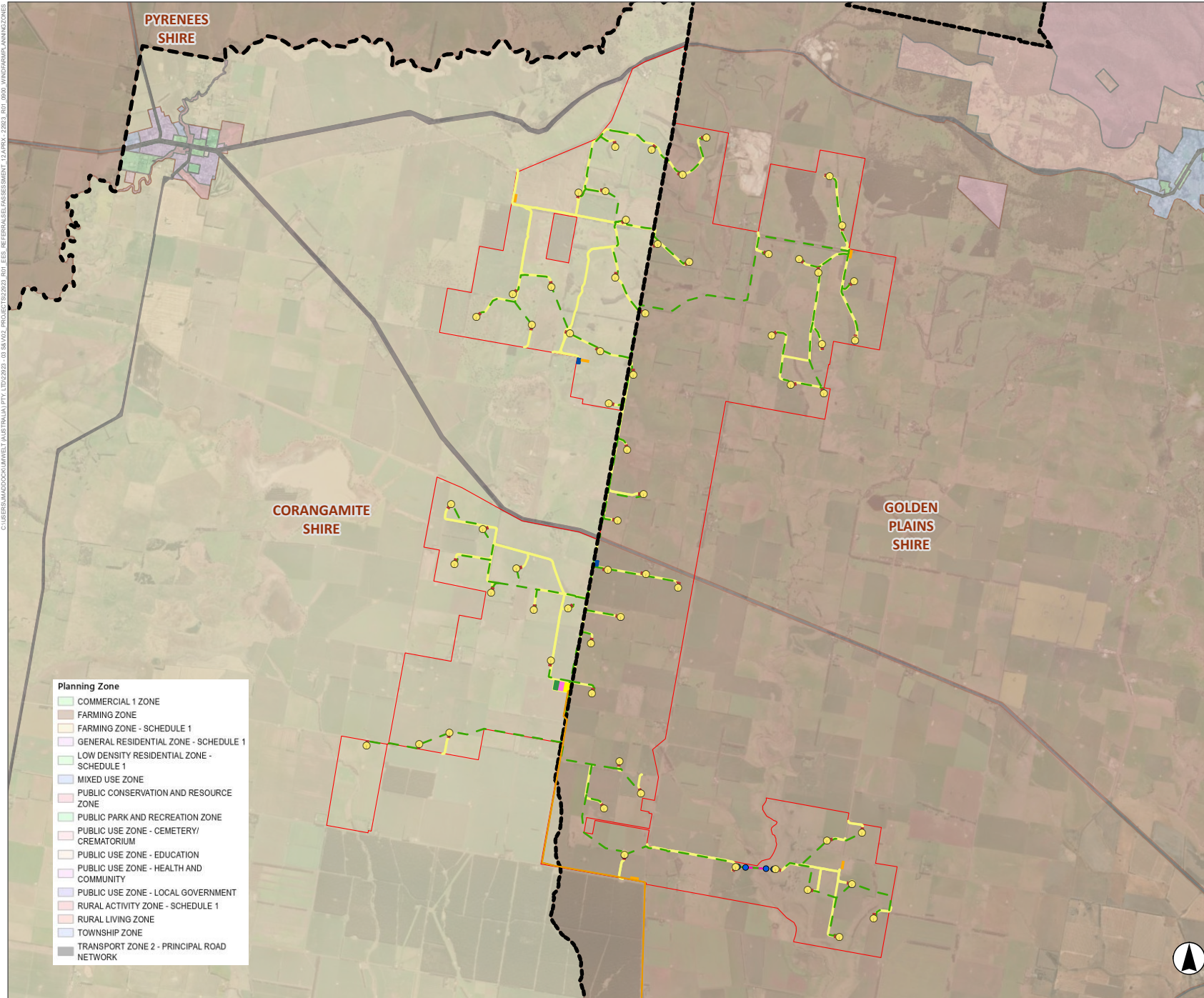


# FIGURE 9

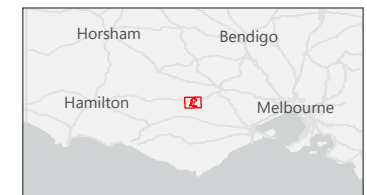
## Wind Farm Planning Zones

### Legend

- Wind Turbines
- Overhead Electrical Reticulation Poles
- Overhead Electrical Reticulation
- Underground Electrical Reticulation
- Access Tracks
- Underground Transmission Line
- Site Substation
- Site Office Compound
- Laydown Areas
- Hardstand
- Battery 150MW
- Batching Plant
- Wind Farm Site
- LGA Boundary



- Planning Zone**
- COMMERCIAL 1 ZONE
  - FARMING ZONE
  - FARMING ZONE - SCHEDULE 1
  - GENERAL RESIDENTIAL ZONE - SCHEDULE 1
  - LOW DENSITY RESIDENTIAL ZONE - SCHEDULE 1
  - MIXED USE ZONE
  - PUBLIC CONSERVATION AND RESOURCE ZONE
  - PUBLIC PARK AND RECREATION ZONE
  - PUBLIC USE ZONE - CEMETERY/ CREMATORIUM
  - PUBLIC USE ZONE - EDUCATION
  - PUBLIC USE ZONE - HEALTH AND COMMUNITY
  - PUBLIC USE ZONE - LOCAL GOVERNMENT
  - RURAL ACTIVITY ZONE - SCHEDULE 1
  - RURAL LIVING ZONE
  - TOWNSHIP ZONE
  - TRANSPORT ZONE 2 - PRINCIPAL ROAD NETWORK



Scale 1:95,000 at A4  
GDA2020 MGA Zone 54

This document and the information are subject to Terms and Conditions and Umwelt (Australia) Pty Ltd ("Umwelt") Copyright in the drawings, information and data recorded ("the information") is the property of Umwelt. This document and the information are solely for the use of the authorized recipient and this document may not be used, copied or reproduced in whole or part for any purpose other than that which it was supplied by Umwelt. Umwelt makes no representation, undertakes no duty and accepts no responsibility to any third party who may use or rely upon this document or the information.  
APPROVED FOR AND ON BEHALF OF Umwelt

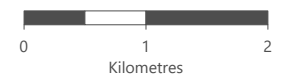
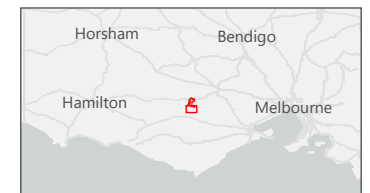
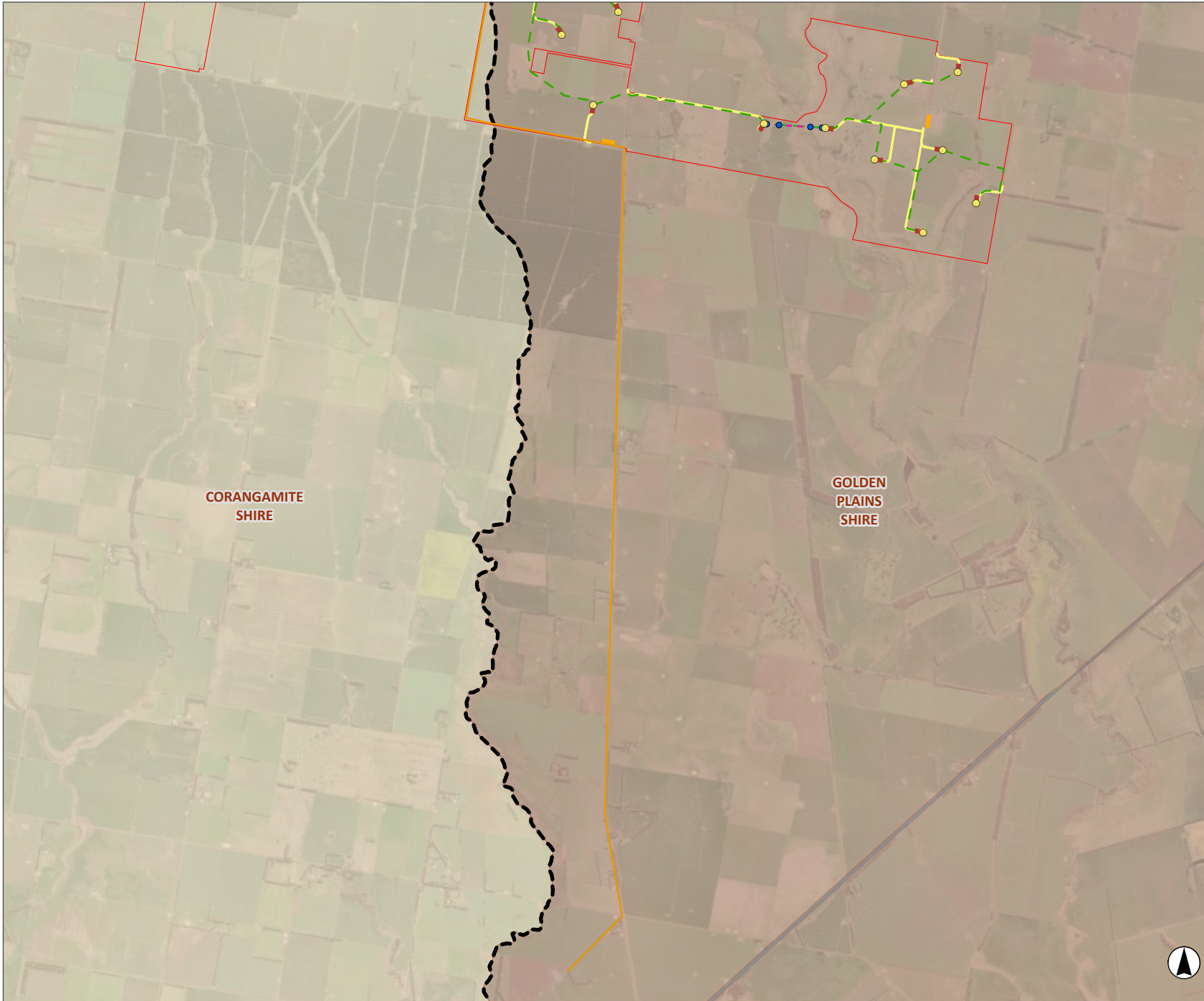


**FIGURE 10**

## Transmission Line Planning Zones

### Legend

- Wind Turbines
  - Overhead Electrical Reticulation Poles
  - Overhead Electrical Reticulation
  - Underground Electrical Reticulation
  - Access Tracks
  - Underground Transmission Line
  - Laydown Areas
  - Hardstand
  - Wind Farm Site
  - LGA Boundary
- Planning Zone**
- FARMING ZONE
  - FARMING ZONE - SCHEDULE 1
  - TRANSPORT ZONE 2 - PRINCIPAL ROAD NETWORK



Scale 1:62,000 at A4  
GDA2020 MGA Zone 54

This document and the information are subject to Terms and Conditions and Umwelt (Australia) Pty Ltd ("Umwelt") Copyright in the drawings, information and data recorded ("the information") is the property of Umwelt. This document and the information are solely for the use of the authorized recipient and this document may not be used, copied or reproduced in whole or part for any purpose other than that which it was supplied by Umwelt. Umwelt makes no representation, undertakes no duty and accepts no responsibility to any third party who may use or rely upon this document or the information.  
APPROVED FOR AND ON BEHALF OF Umwelt

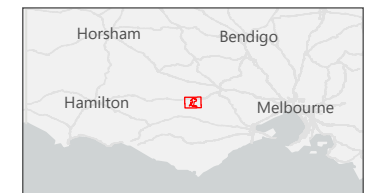


# FIGURE 11

## Wind Farm Planning Overlays

### Legend

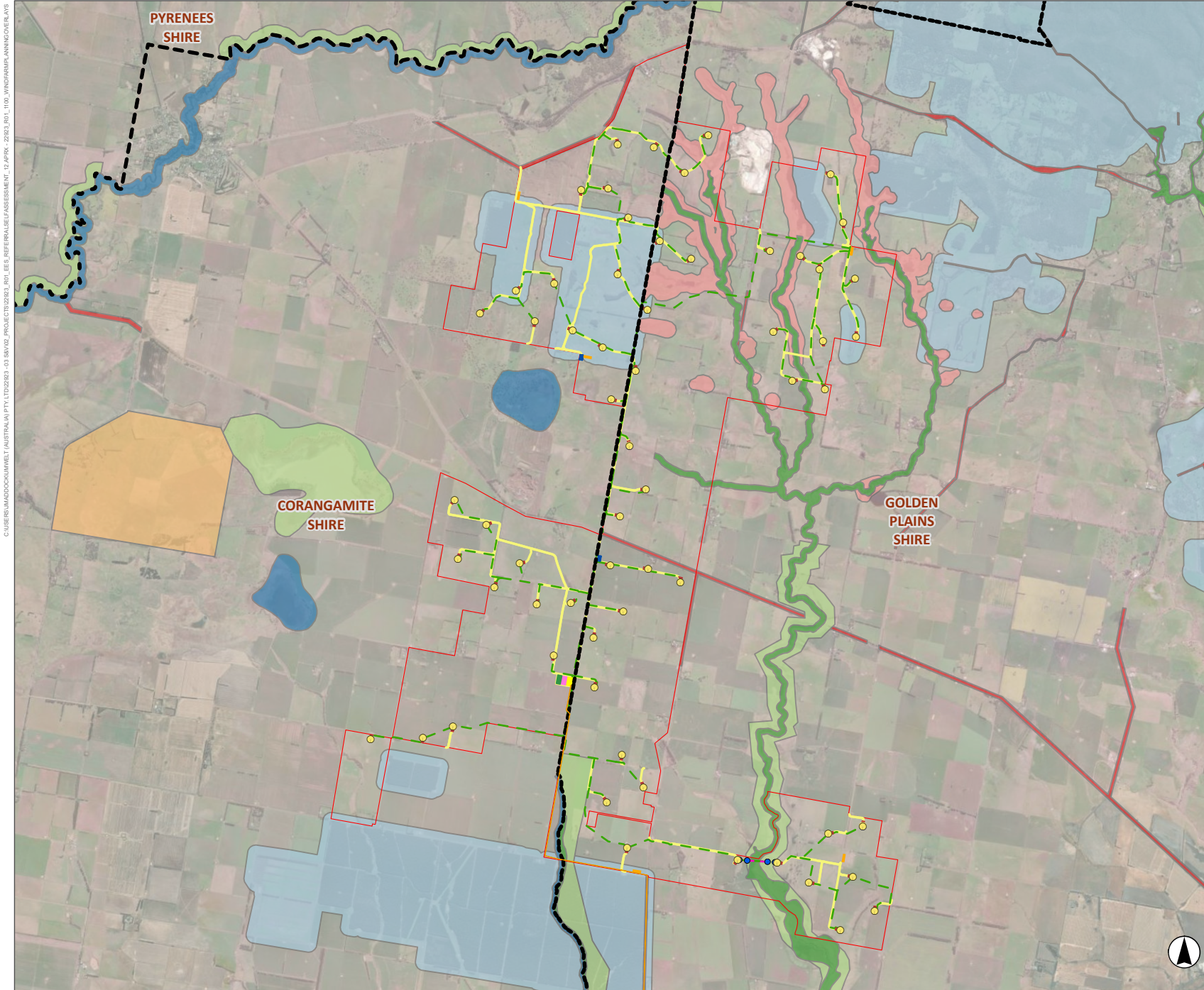
- Wind Turbines
- Overhead Electrical Reticulation Poles
- Overhead Electrical Reticulation
- Underground Electrical Reticulation
- Access Tracks
- Underground Transmission Line
- Site Substation
- Site Office Compound
- Laydown Areas
- Hardstand
- Battery 150MW
- Batching Plant
- Wind Farm Site
- LGA Boundary
- Bushfire Management Overlay
- Environmental Significance Overlay - Schedule 1
- Environmental Significance Overlay - Schedule 2
- Land Subject to Inundation Overlay
- Salinity Management Overlay
- Significant Landscape Overlay - Schedule 1
- Vegetation Protection Overlay - Schedule 2



0 2 4  
Kilometres

Scale 1:95,000 at A4  
GDA2020 MGA Zone 54

This document and the information are subject to Terms and Conditions and Umwelt (Australia) Pty Ltd ("Umwelt") Copyright in the drawings, information and data recorded ("the information") is the property of Umwelt. This document and the information are solely for the use of the authorized recipient and this document may not be used, copied or reproduced in whole or part for any purpose other than that which it was supplied by Umwelt. Umwelt makes no representation, undertakes no duty and accepts no responsibility to any third party who may use or rely upon this document or the information.  
APPROVED FOR AND ON BEHALF OF Umwelt



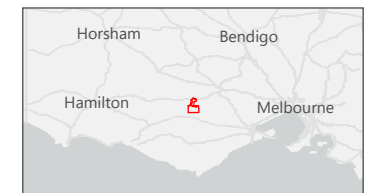


**FIGURE 12**

## Transmission Line Planning Overlays

### Legend

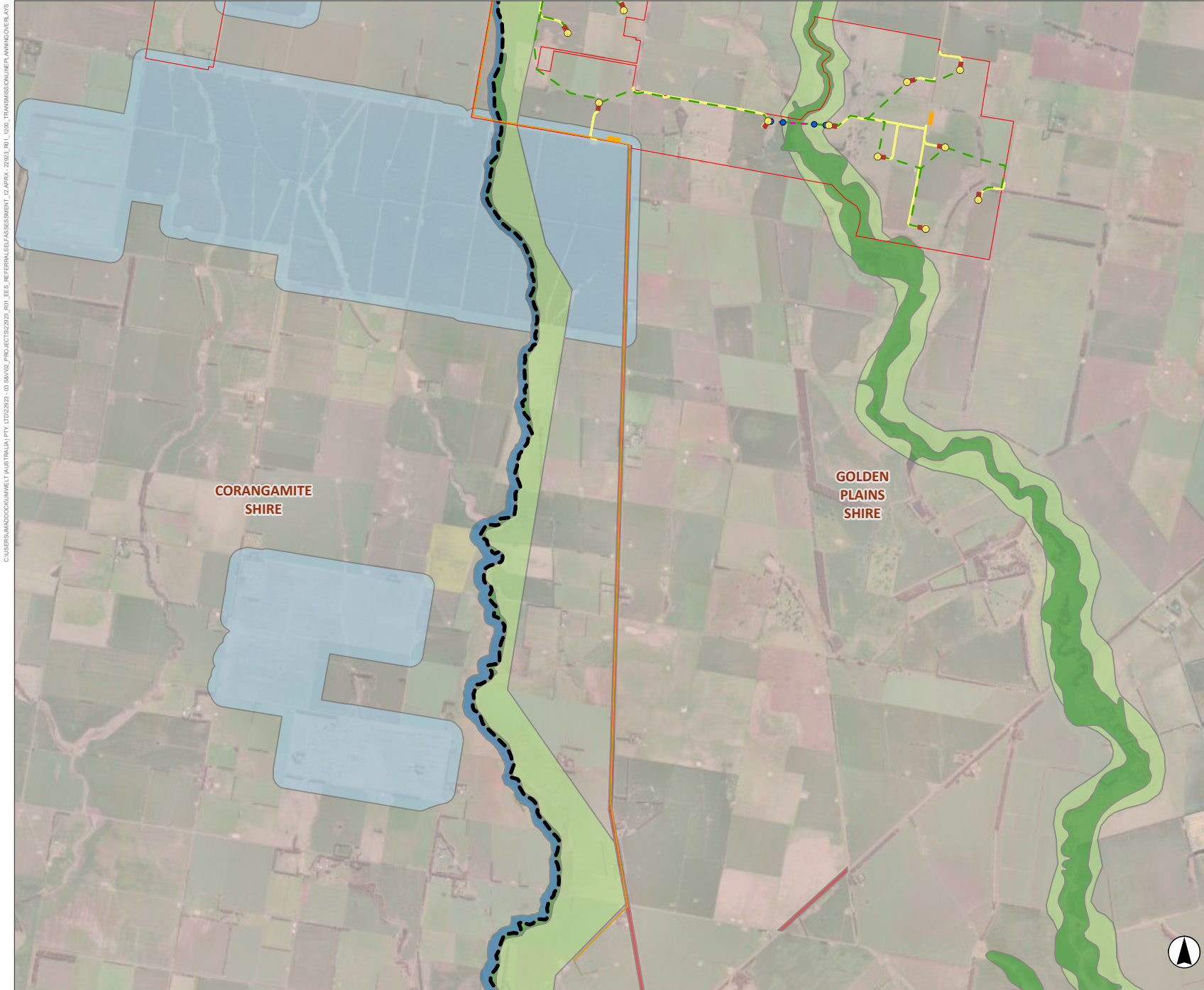
- Wind Turbines
- Overhead Electrical Reticulation Poles
- Overhead Electrical Reticulation
- Underground Electrical Reticulation
- Access Tracks
- Underground Transmission Line
- Site Substation
- Site Office Compound
- Laydown Areas
- Hardstand
- Battery 150MW
- Batching Plant
- Wind Farm Site
- LGA Boundary
- Bushfire Management Overlay
- Environmental Significance Overlay - Schedule 1
- Environmental Significance Overlay - Schedule 2
- Land Subject to Inundation Overlay
- Salinity Management Overlay
- Significant Landscape Overlay - Schedule 1
- Vegetation Protection Overlay - Schedule 2



0 1 2  
Kilometres

Scale 1:62,000 at A4  
GDA2020 MGA Zone 54

This document and the information are subject to Terms and Conditions and Umwelt (Australia) Pty Ltd ("Umwelt") Copyright in the drawings, information and data recorded ("the information") is the property of Umwelt. This document and the information are solely for the use of the authorized recipient and this document may not be used, copied or reproduced in whole or part for any purpose other than that which it was supplied by Umwelt. Umwelt makes no representation, undertakes no duty and accepts no responsibility to any third party who may use or rely upon this document or the information.  
APPROVED FOR AND ON BEHALF OF Umwelt





# FIGURE 13

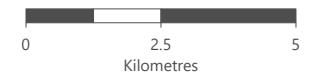
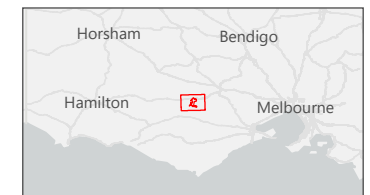
## Native Title

### Legend

- Wind Turbines
- Overhead Electrical Reticulation Poles
- Overhead Electrical Reticulation
- Underground Electrical Reticulation
- Access Tracks
- Underground Transmission Line
- Site Substation
- Site Office Compound
- Laydown Areas
- Hardstand
- Battery 150MW
- Batching Plant
- Wind Farm Site
- Wadawurrung Native Title Claim
- Application (Tribunal No. VC2022/002)

### Native Title Claim

- Wadawurrung Native Title Claim
- Application (Tribunal No. VC2022/002)



Scale 1:140,000 at A4  
GDA2020 MGA Zone 54

This document and the information are subject to Terms and Conditions and Umwelt (Australia) Pty Ltd ("Umwelt") Copyright in the drawings, information and data recorded ("the information") is the property of Umwelt. This document and the information are solely for the use of the authorized recipient and this document may not be used, copied or reproduced in whole or part for any purpose other than that which it was supplied by Umwelt. Umwelt makes no representation, undertakes no duty and accepts no responsibility to any third party who may use or rely upon this document or the information.  
APPROVED FOR AND ON BEHALF OF Umwelt

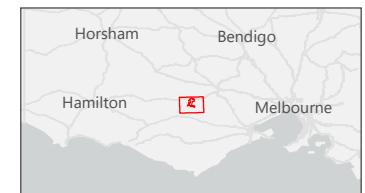


# FIGURE 14

## Hydrology

### Legend

- Wind Turbines
  - Water Tank Location
  - Overhead Electrical Reticulation Poles
  - Overhead Electrical Reticulation
  - Underground Electrical Reticulation
  - Access Tracks
  - Underground Transmission Line
  - Site Substation
  - Site Office Compound
  - Laydown Areas
  - Hardstand
  - Battery 150MW
  - Batching Plant
  - Wind Farm Site
  - Important Wetland
- ### Current Wetland
- Forest/Woodland
  - No Emergent Vegetation
  - Sedge/Grass/Forb
  - Unknown



0 1 2  
Kilometres

Scale 1:140,000 at A4  
GDA2020 MGA Zone 54

This document and the information are subject to Terms and Conditions of Umwelt (Australia) Pty Ltd ("Umwelt"). Copyright in the drawings, information and data recorded ("the information") is the property of Umwelt. This document and the information are solely for the use of the authorized recipient and this document may not be used, copied or reproduced in whole or part for any purpose other than that which it was supplied by Umwelt. Umwelt makes no representation, undertakes no duty and accepts no responsibility to any third party who may use or rely upon this document or the information.  
APPROVED FOR AND ON BEHALF OF Umwelt



**FIGURE 15**

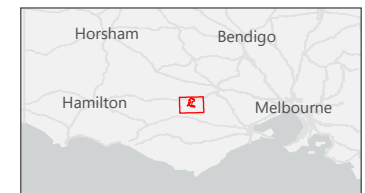
## Acid Sulfate Soils

### Legend

- Wind Turbines
- Overhead Electrical Reticulation Poles
- Overhead Electrical Reticulation
- Underground Electrical Reticulation
- Access Tracks
- Underground Transmission Line
- Site Substation
- Site Office Compound
- Laydown Areas
- Hardstand
- Battery 150MW
- Batching Plant
- Wind Farm Site

### National Acid Sulfate Soils Atlas

- A4 High Probability/Very Low Confidence
- B4 Low Probability/Very Low Confidence
- C4 Extremely Low Probability/Very Low Confidence



0 1 2  
Kilometres

Scale 1:140,000 at A4  
GDA2020 MGA Zone 54

This document and the information are subject to Terms and Conditions and Umwelt (Australia) Pty Ltd ("Umwelt") Copyright in the drawings, information and data recorded ("the information") is the property of Umwelt. This document and the information are solely for the use of the authorized recipient and this document may not be used, copied or reproduced in whole or part for any purpose other than that which it was supplied by Umwelt. Umwelt makes no representation, undertakes no duty and accepts no responsibility to any third party who may use or rely upon this document or the information.  
APPROVED FOR AND ON BEHALF OF Umwelt





**FIGURE 16**

## Nearby Wind Farms

