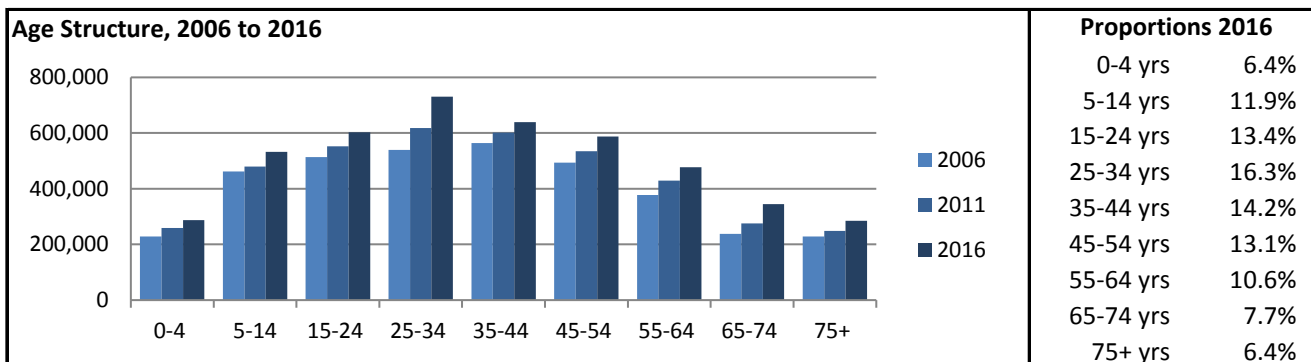
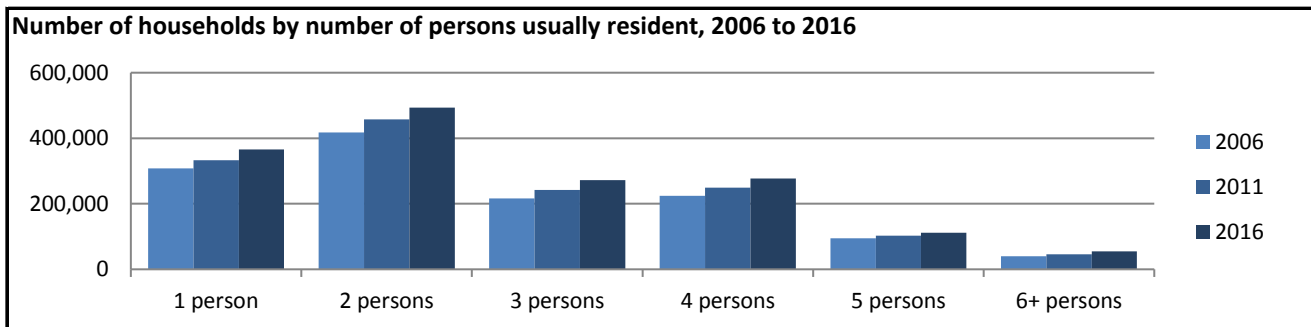


## Greater Melbourne GCCSA

Count of persons by Usual Residence	Total 2006	3,645,944	Period	5-year change	Annual rate
	Total 2011	3,999,981	2006-11	354,037 increase	1.9% p.a.
	Total 2016	4,485,211	2011-16	485,230 increase	2.3% p.a.



	2006	2011	2016
Median population age in years	36	36	36
Proportion indigenous persons	0.4%	0.5%	0.5%
Proportion Australian citizens	84.6%	83.0%	79.6%
Proportion born in Australia	64.5%	63.3%	59.8%
Proportion born elsewhere	28.7%	31.5%	33.9%
Proportion speaking English only at home	68.5%	66.3%	62.0%
Proportion speaking other language at home	26.0%	29.1%	32.3%



	2006	2011	2016
Average household size	2.6	2.6	2.7
Average persons per bedroom	0.8	0.8	0.9
Proportion of households with children	43.9%	44.0%	43.5%
Proportion couple-only households	22.9%	23.5%	22.9%
Proportion lone person households	22.5%	22.3%	22.0%
Proportion group households	4.2%	4.5%	4.7%
Proportion of dwellings rented	24.3%	26.5%	28.8%
Proportion owned with mortgage	33.1%	31.5%	29.0%
Proportion owned outright	34.8%	35.3%	34.3%