

Planning Property Report

from www.dtpli.vic.gov.au/planning on 28 April 2017 04:06 PM

Crown Description: Allot. 2002 HARCOURT

Address: FARADAY-SUTTON GRANGE ROAD HARCOURT NORTH 3453

Local Government (Council): MOUNT ALEXANDER **Council Property Number:** 8075

Directory Reference: VicRoads 44 F9

This parcel is one of 2 parcels comprising the property.

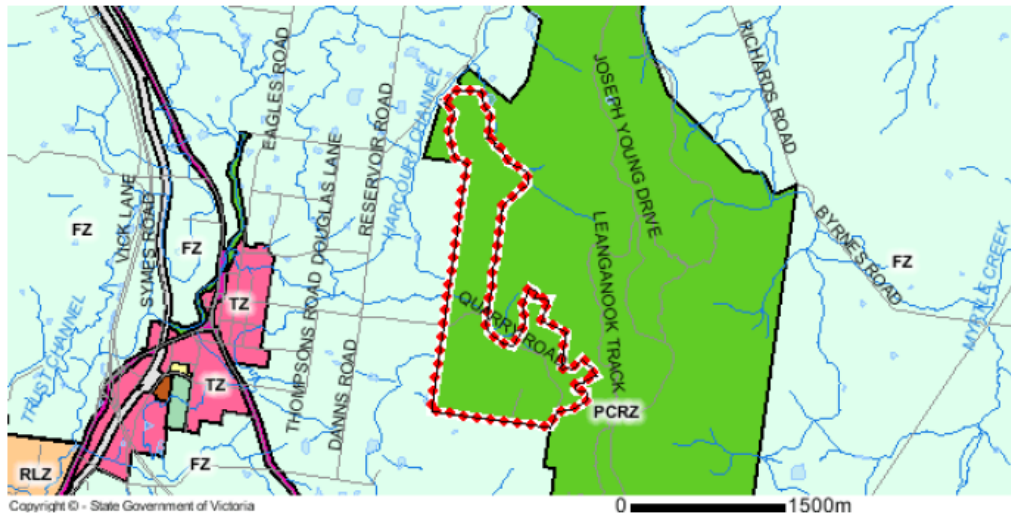
For full parcel details get the free Basic Property report at [Property Reports](#)

See next page for planning information

Planning Zone

PUBLIC CONSERVATION AND RESOURCE ZONE (PCRZ)

SCHEDULE TO THE PUBLIC CONSERVATION AND RESOURCE ZONE



Note: labels for zones may appear outside the actual zone - please compare the labels with the legend.

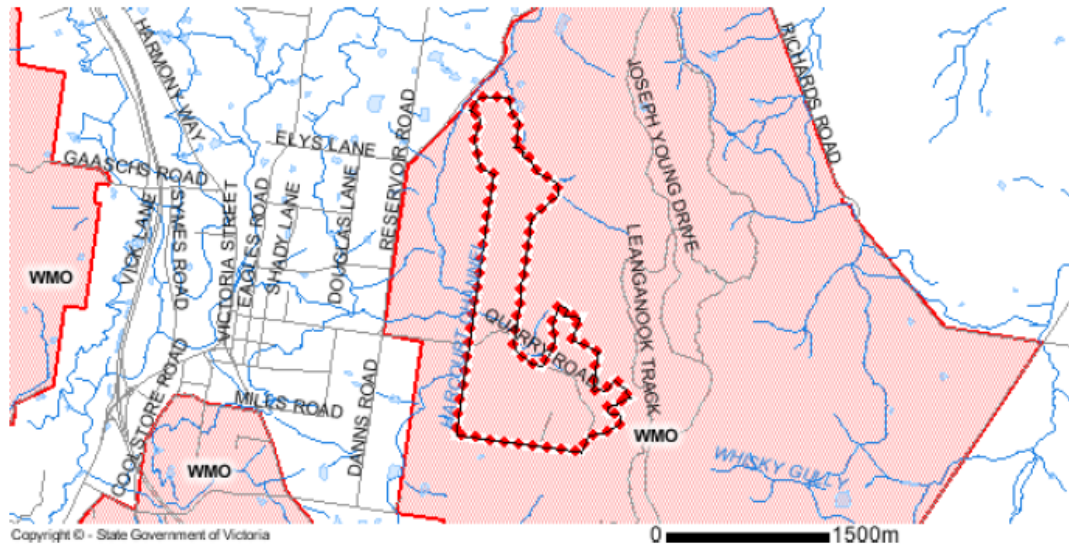
Zones Legend

ACZ - Activity Centre	IN1Z - Industrial 1	R1Z - General Residential
B1Z - Commercial 1	IN2Z - Industrial 2	R2Z - General Residential
B2Z - Commercial 1	IN3Z - Industrial 3	R3Z - General Residential
B3Z - Commercial 2	LDRZ - Low Density Residential	RAZ - Rural Activity
B4Z - Commercial 2	MUZ - Mixed Use	RCZ - Rural Conservation
B5Z - Commercial 1	NRZ - Neighbourhood Residential	RDZ1 - Road - Category 1
C1Z - Commercial 1	PCRZ - Public Conservation & Resource	RDZ2 - Road - Category 2
C2Z - Commercial 2	PDZ - Priority Development	RGZ - Residential Growth
CA - Commonwealth Land	PPRZ - Public Park & Recreation	RLZ - Rural Living
CCZ - Capital City	PUZ1 - Public Use - Service & Utility	RUZ - Rural
CDZ - Comprehensive Development	PUZ2 - Public Use - Education	SUZ - Special Use
DZ - Dockland	PUZ3 - Public Use - Health Community	TZ - Township
ERZ - Environmental Rural	PUZ4 - Public Use - Transport	UFZ - Urban Floodway
FZ - Farming	PUZ5 - Public Use - Cemetery/Crematorium	UGZ - Urban Growth
GRZ - General Residential	PUZ6 - Public Use - Local Government	
GWAZ - Green Wedge A	PUZ7 - Public Use - Other Public Use	
GWZ - Green Wedge	PZ - Port	

- - - - - Urban Growth Boundary
 ++++++ Railway - - - - - Tram ——— River, stream Lake, waterbody

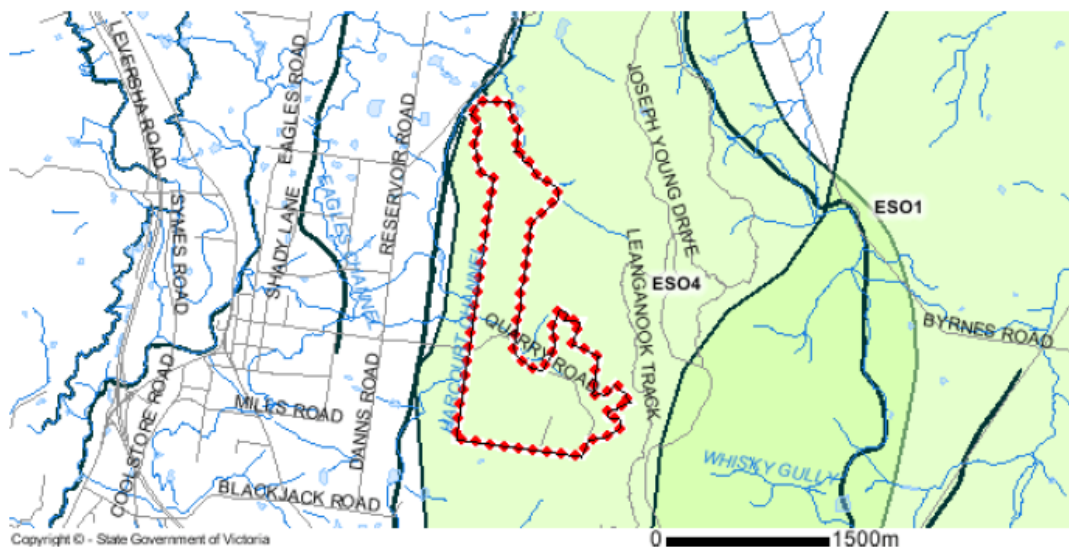
Planning Overlays

BUSHFIRE MANAGEMENT OVERLAY (BMO OR WMO)



ENVIRONMENTAL SIGNIFICANCE OVERLAY (ESO)

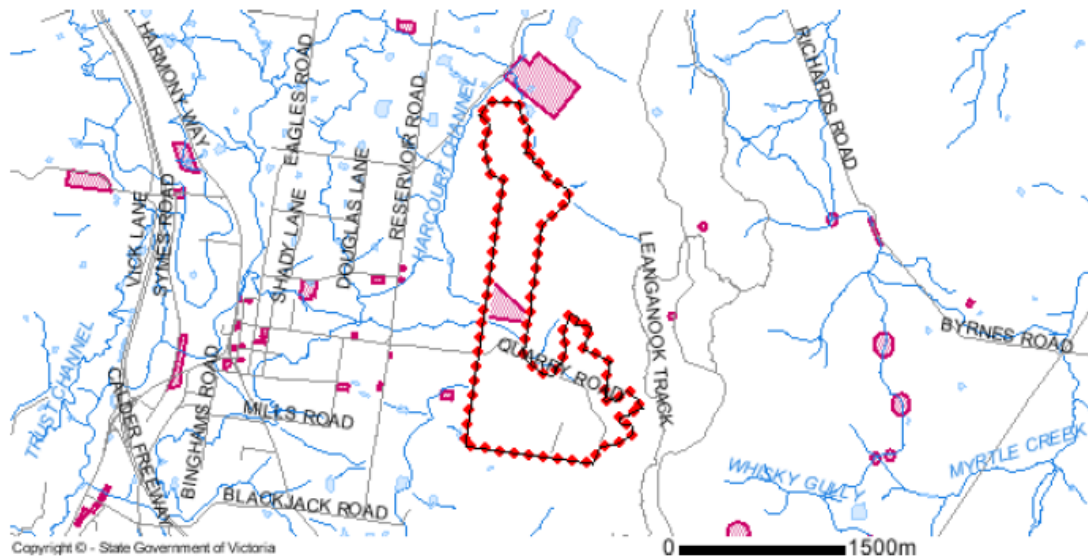
ENVIRONMENTAL SIGNIFICANCE OVERLAY - SCHEDULE 4 (ESO4)



Planning Overlays

HERITAGE OVERLAY (HO)

HERITAGE OVERLAY SCHEDULE (HO798)



Overlays Legend

AEO - Airport Environs	LSI0 - Land Subject to Inundation
BMO - Bushfire Management (also WMD)	MAEO1 - Melbourne Airport Environs 1
CLPO - City Link Project	MAEO2 - Melbourne Airport Environs 2
DCPD - Development Contributions Plan	NCO - Neighbourhood Character
DDO - Design & Development	PO - Parking
DDOPT - Design & Development Part	PAO - Public Acquisition
DPO - Development Plan	RO - Restructure
EAO - Environmental Audit	RCO - Road Closure
EMO - Erosion Management	SBO - Special Building
ESO - Environmental Significance	SLO - Significant Landscape
FO - Floodway	SMO - Salinity Management
HO - Heritage	SRO - State Resource
IPO - Incorporated Plan	VPO - Vegetation Protection
Railway	Tram
River, stream	Lake, waterbody

Note: due to overlaps some colours on the maps may not match those in the legend.

Areas of Aboriginal Cultural Heritage Sensitivity

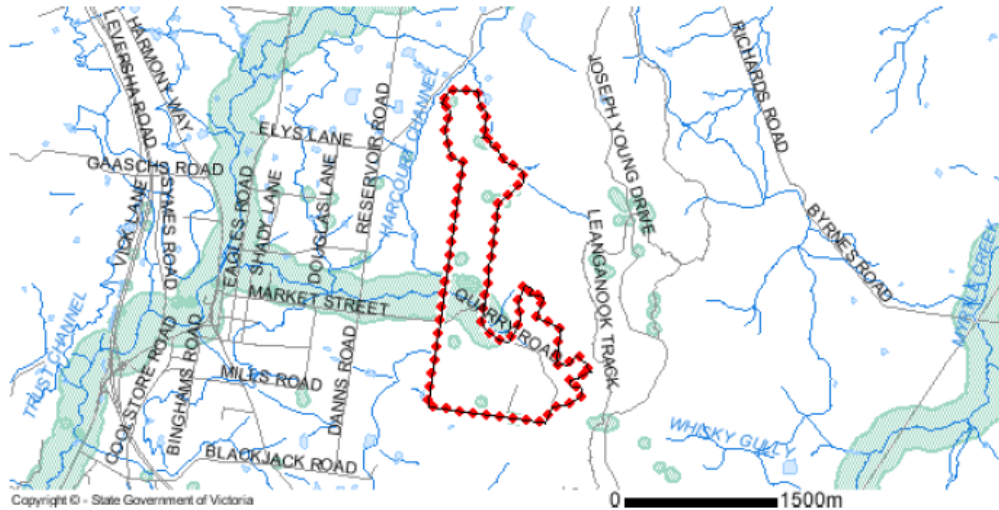
This parcel is within, or is affected by, one or more areas of cultural heritage sensitivity as described in the Aboriginal Heritage Regulations 2007.

The data provides indicative information about the location and extent of areas of Aboriginal cultural heritage sensitivity and is provided to assist with the decisions about the potential need to prepare a Cultural Heritage Management Plan in relation to proposed activities on this property.

For further information about whether a Cultural Heritage Management Plan is required go to [Aboriginal Heritage Planning Tool](#)

To find out if your property has any recorded Aboriginal cultural heritage places, such as scarred trees, occupation sites or places of burial, you can request information from the Victorian Aboriginal Heritage Register.

Find out more about the [Victorian Aboriginal Heritage Register](#)



Aboriginal Cultural Heritage Sensitivity

	Aboriginal Cultural Heritage Sensitivity		Selected Land
	Railway		Tram
	River, stream		Lake, waterbody