

Proposed planning provision changes to 1 Tower Road Werribee

Information Sheet
May 2018

Have your say on proposed planning provision changes to 1 Tower Road, Werribee.

Part of the land at 1 Tower Road, Werribee (the site) has been determined surplus to the Victorian Government's current and future requirements. Southern Rural Water (SRW) has requested that the planning provisions for the site be changed to reflect that part of it is no longer required for public use and to help facilitate its sale.

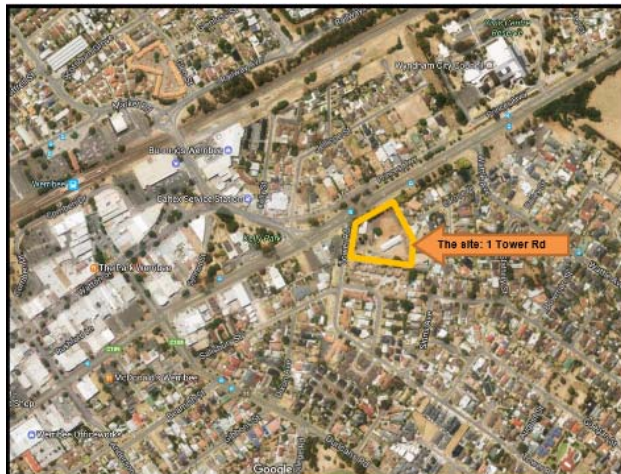
The Minister for Planning has referred the proposal to the independent Government Land Standing Advisory Committee (Advisory Committee) for consideration and to provide recommendations on the suitability of the proposed planning scheme changes.

Site details:

The former water reserve and operations centre (shown below) has an area of 1.2 hectares with frontages to the Princes Highway and Tower Road. The site has interfaces with residential uses to the east and south and the Werribee Activity Centre to the west and north, across the Princes Highway.

SRW proposes to redevelop the existing office and administrative buildings on the site to meet their future service delivery needs. In order to achieve this, it is intended to subdivide the site and dispose of the balance. The area to be sold requires appropriate planning provisions to be put in place.

Map



Key dates

Exhibition opens	Monday 21 May 2018
Information session	6:30pm – 7:30pm, 6 June 2018 Wyndham Council Chambers, 45 Princes Highway, Werribee
Exhibition closes	5pm Monday 25 June 2018
Public Hearings	Commencing week of 23 July 2018
Report to the Minister	August 2018

What is proposed to change?

SRW has requested the following changes to the planning provisions for the site:

Existing provisions	Proposed changes
Public Use Zone 1 (Service and Utility)	Activity Centre Zone
Parking Overlay	Retain
Heritage Overlay	Reduce the extent, and remove tree controls
	Environmental Audit Overlay

Copies of the current and proposed planning scheme provisions can be found at www.planning.vic.gov.au/glps

Where can I get more information?

The following documents can be viewed online at planning.vic.gov.au/glps:

- A planning report which provides details on the site and why the proposed planning provisions were selected.
- The proposed planning provisions (zones and overlays).
- A fact sheet on how this site was declared surplus.

Hard copies of this information are also available for viewing at:

- **Wyndham Civic Centre**
45 Princes Highway, Werribee
- **Werribee Library @ Wyndham Cultural Centre**
177 Watton Street, Werribee
- **Wyndham Cultural Centre**
177 Watton Street, Werribee

Proposed planning provision changes to 1 Tower Road Werribee

What is the Government Land Standing Advisory Committee?

The Advisory Committee comprises independent experts in statutory and strategic planning, land development, economics, and social and environmental issues.

The aim of the Advisory Committee is to provide a consistent, transparent and timely process for the consideration of changes to planning provisions of government land.

What will the Advisory Committee do?

The Advisory Committee will consider the proposal and any submissions made to it. The Advisory Committee will also visit the site as part of its deliberations. It is outside the scope of the Advisory Committee to consider whether the site is surplus or not.

Further detail is set out in the Advisory Committee Terms of Reference available at: planning.vic.gov.au/glps.

The Advisory Committee will host a public information session which will provide an opportunity to ask questions about the Advisory Committee process and timing.

Have your say – make a submission

You are invited to make a submission to the Advisory Committee on the proposed planning provision changes which must be made online at: <https://engage.vic.gov.au/glsac/t22>.

Submissions must be directed to the Advisory Committee and can address any matter the submitter considers relevant, including whether the proposal is supported or objected to or if an alternative zone or overlay may be appropriate.

All submissions must state the name and address of the person making the submission and will be treated as public documents.

Written submissions will be accepted by post in instances where internet access is not available. Written submission must be accompanied by a completed and signed submissions coversheet. Please call (03) 8392 5120 to request the coversheet.

Can I make a presentation at the Public Hearing?

You can also make a verbal presentation at the Public Hearing to be held by the Advisory Committee. If you would like to make a presentation at the Public Hearing, you must make a written submission and complete the relevant section of the online form.

Further details regarding the public hearing will be made available after the exhibition period has finished and once scheduling has been finalised.

How can I find out about the final outcome?

The Minister for Planning will consider the recommendations of the Advisory Committee and will make the final decision on the proposed changes to the planning provisions for the site.

The final decision and relevant documents will be available online at: planning.vic.gov.au/glps.

Contact information

If you have questions about the site and the proposed planning changes, contact Craig Smith, Southern Rural Water on (03) 9259 5051 or email craigs@srw.com.au

If you have questions about the Advisory Committee process, contact Planning Panels Victoria on (03) 8392 5120 or email planning.panels@delwp.vic.gov.au.

All other questions should be directed to the Government Land Planning Service on (03) 9637 9553 or email glp.service@delwp.vic.gov.au.

© The State of Victoria Department of Environment, Land, Water and Planning 2018



This work is licensed under a Creative Commons Attribution 4.0 International licence. You are free to re-use the work under that licence, on the condition that you credit the State of Victoria as author. The licence does not apply to any images, photographs or branding, including the Victorian Coat of Arms, the Victorian Government logo and the Department of Environment, Land, Water and Planning (DELWP) logo. To view a copy of this licence, visit <http://creativecommons.org/licenses/by/4.0/>

Printed by the Department of Environment, Land, Water and Planning

ISBN 978-1-76077-059-4 (pdf/online/MS Word)

Disclaimer

This publication may be of assistance to you but the State of Victoria and its employees do not guarantee that the publication is without flaw of any kind or is wholly appropriate for your particular purposes and therefore disclaims all liability for any error, loss or other consequence which may arise from you relying on any information in this publication.

Accessibility

If you would like to receive this publication in an alternative format, please telephone the DELWP Customer Service Centre on 136 186, email customer.service@delwp.vic.gov.au or via the National Relay Service on 133 677 www.relayservice.com.au. This document is also available on the internet at www.delwp.vic.gov.au.