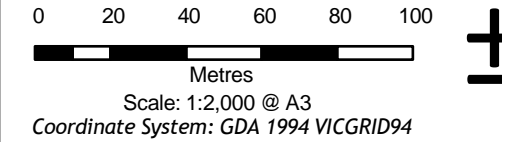


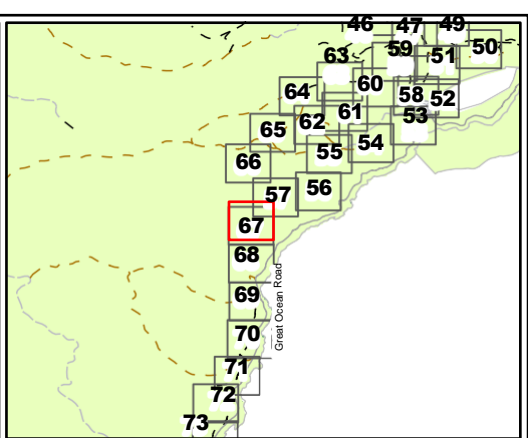
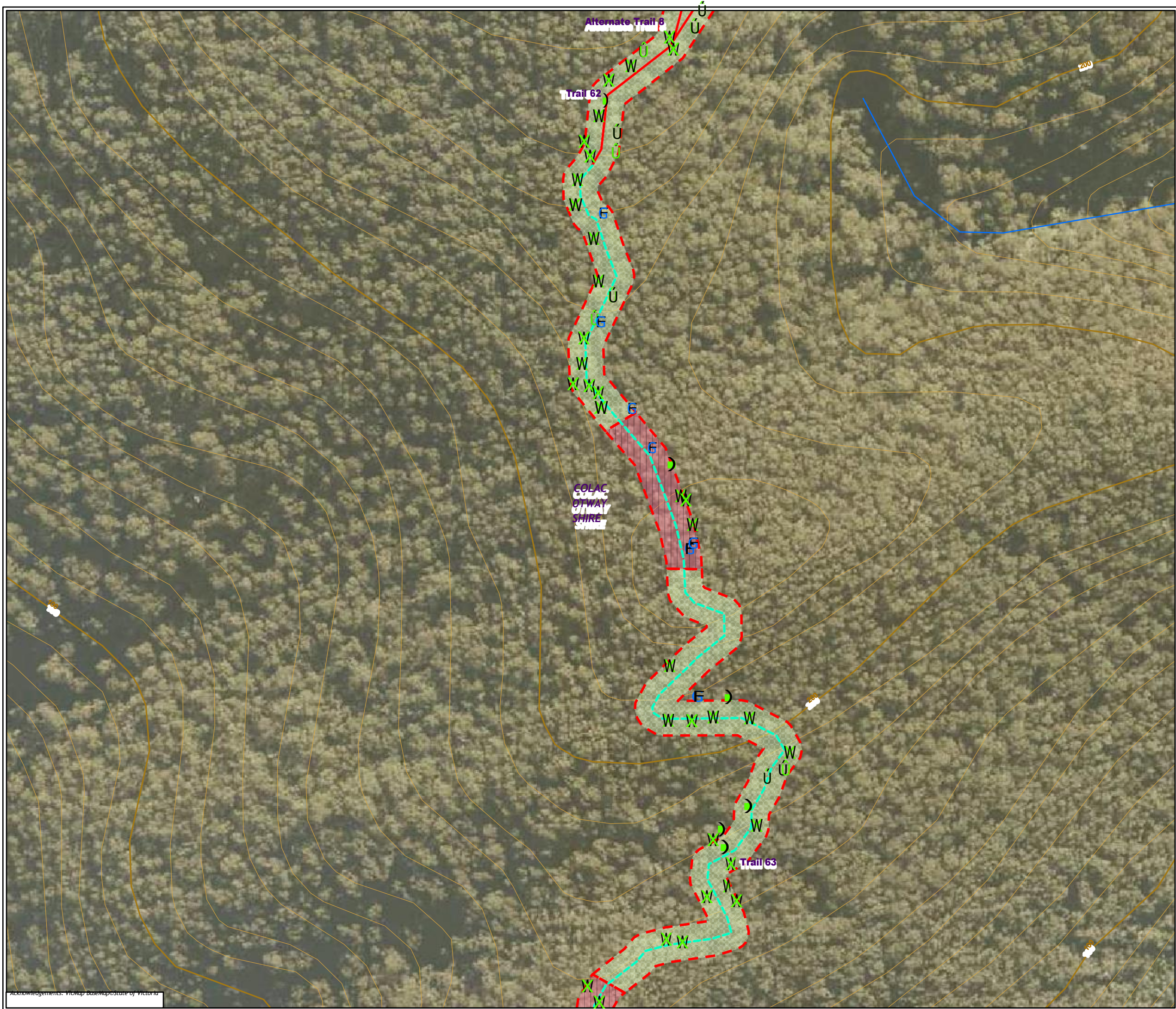
- Legend**
- Assessment corridor - Unassessed
- Trail alignment**
- Existing Informal Trail
  - Existing MVO Track
  - New Walking Trail

**Figure 5.67 Ecological features of the Assessment area**



Matter: 35990,  
Date: 13 December 2022 ,  
Prepared for: ML, Prepared by: MK, Last edited by: mknudsen  
Layout: 35990\_F4\_Eco  
Project: P:\35800s\35871\Mapping\  
35990\_GORT\_WT\_Ecology\_Figures.aprx





**Legend**

**Trail alignment**

- Existing Informal Trail
- New Walking Trail

**Large trees in patch**

- Dead
- Eucalyptus globulus* - Southern Blue-gum
- Eucalyptus obliqua* - Messmate Stringybark
- Eucalyptus globulus subsp. globulus* - Southern Blue-gum

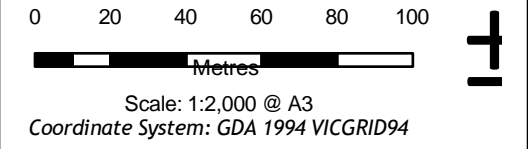
**Habitat zone condition/quality**

- High

**Habitat Zone (EVC)**

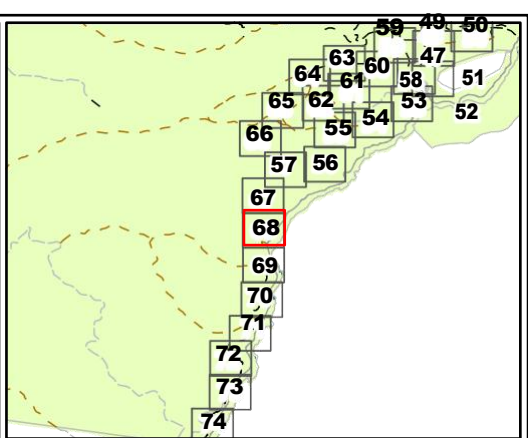
- (OtR\_0021) Shrubby Dry Forest
- (OtR\_0045) Shrubby Foothill Forest

**Figure 5.68 Ecological features of the Assessment area**



Matter: 35990,  
Date: 13 December 2022 ,  
Prepared for: ML, Prepared by: MK, Last edited by: mknudsen  
Layout: 35990\_F4\_Eco  
Project: P:\35800s\35871\Mapping\  
35990\_GORT\_WT\_Ecology\_Figures.aprx





**Legend**

**Trail alignment**

- Existing Informal Trail
- Existing MVO Track
- New Walking Trail

**Large trees in patch**

- Eucalyptus cypellocarpa - Mountain Grey-gum
- Eucalyptus globulus - Southern Blue-gum
- Eucalyptus obliqua - Messmate Stringybark

**Habitat zone condition/quality**

- High

**Habitat Zone (EVC)**

- (OtR\_0021) Shrubby Dry Forest
- (OtR\_0045) Shrubby Foothill Forest

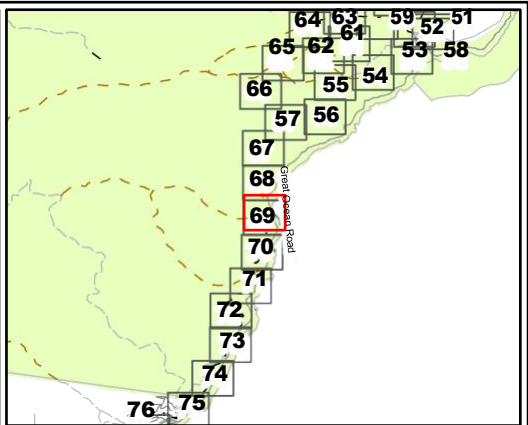
**Figure 5.69 Ecological features of the Assessment area**

0 20 40 60 80 100  
Metres  
Scale: 1:2,000 @ A3  
Coordinate System: GDA 1994 VICGRID94



Matter: 35990,  
Date: 13 December 2022 ,  
Prepared for: ML, Prepared by: MK, Last edited by: mknudsen  
Layout: 35990\_F4\_Eco  
Project: P:\35800s\35871\Mapping\  
35990\_GORT\_WT\_Ecology\_Figures.aprx



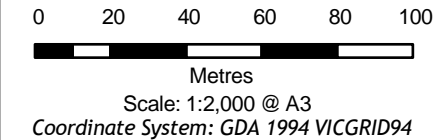


**Legend**

**Trail alignment**

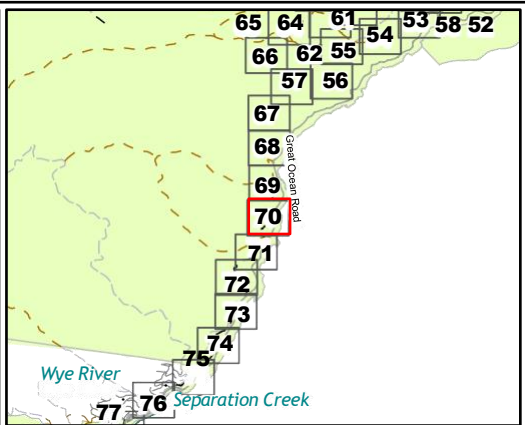
- Existing MVO Track
- Existing Walking Trail

**Figure 5.70 Ecological features of the Assessment area**



Matter: 35990,  
Date: 13 December 2022 ,  
Prepared for: ML, Prepared by: MK, Last edited by: mknudsen  
Layout: 35990\_F4\_Eco  
Project: P:\35800s\35871\Mapping\  
35990\_GORT\_WT\_Ecology\_Figures.aprx



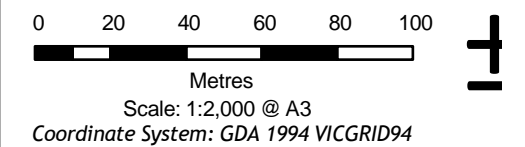


**Legend**

**Trail alignment**

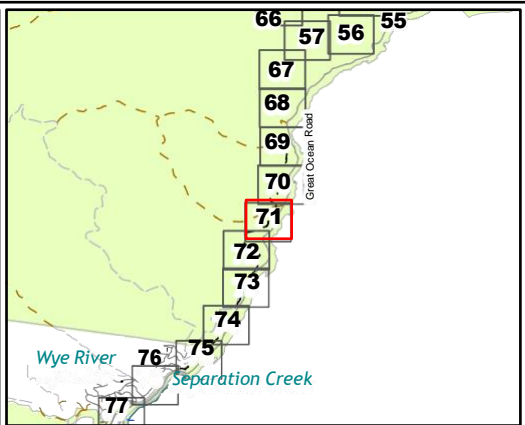
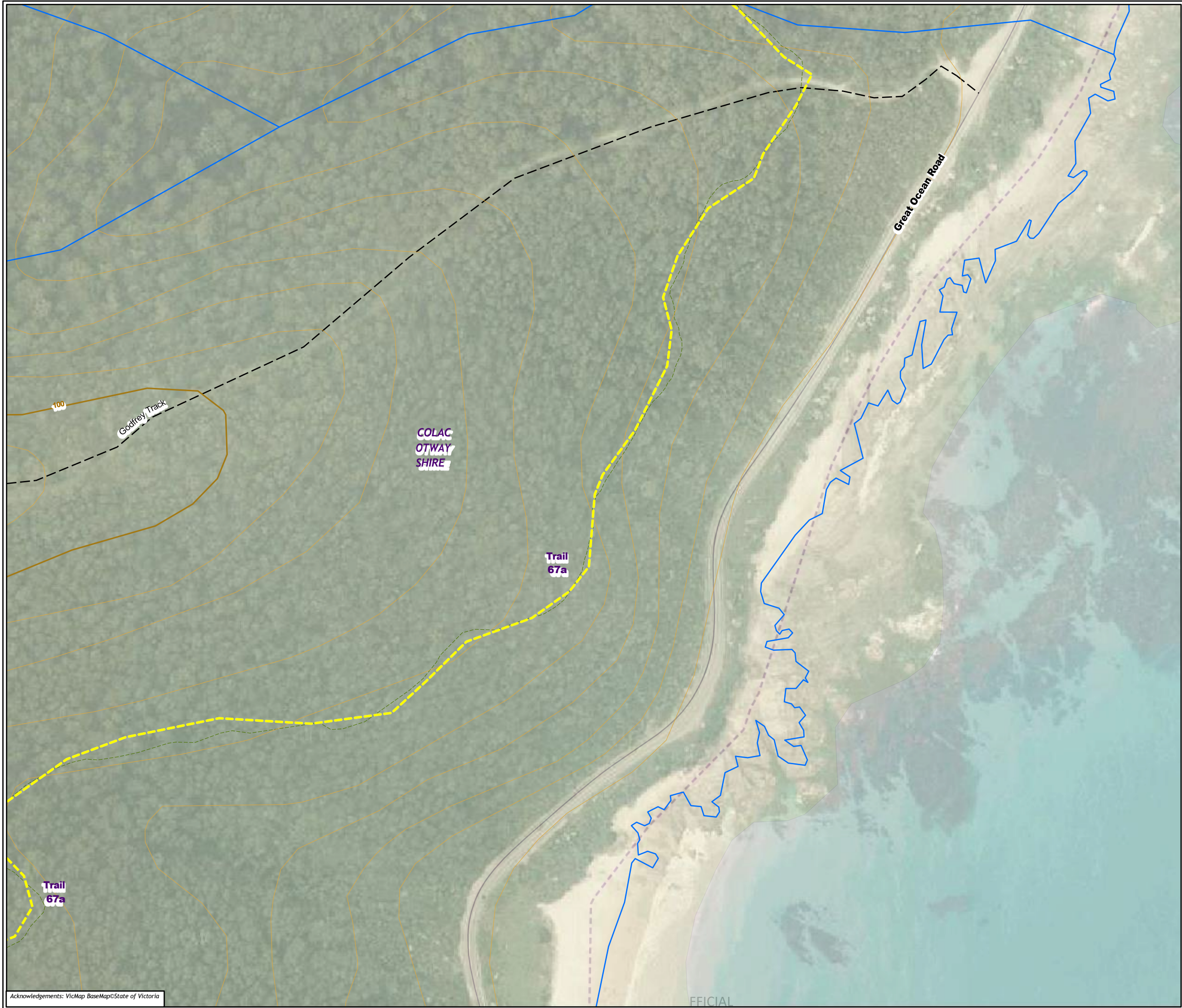
- Existing Walking Trail

**Figure 5.71 Ecological features of the Assessment area**



Matter: 35990,  
Date: 13 December 2022 ,  
Prepared for: ML, Prepared by: MK, Last edited by: mknudsen  
Layout: 35990\_F4\_Eco  
Project: P:\35800s\35871\Mapping\  
35990\_GORT\_WT\_Ecology\_Figures.aprx





**Legend**

**Trail alignment**

--- Existing Walking Trail

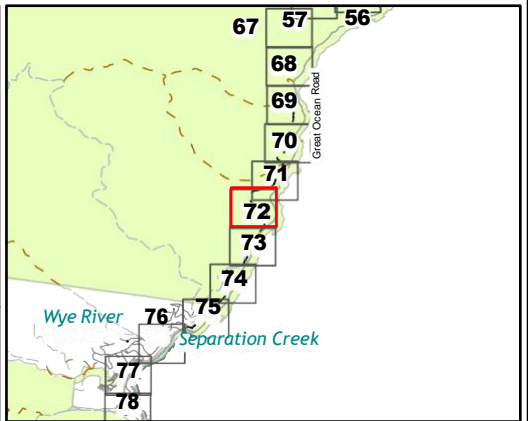
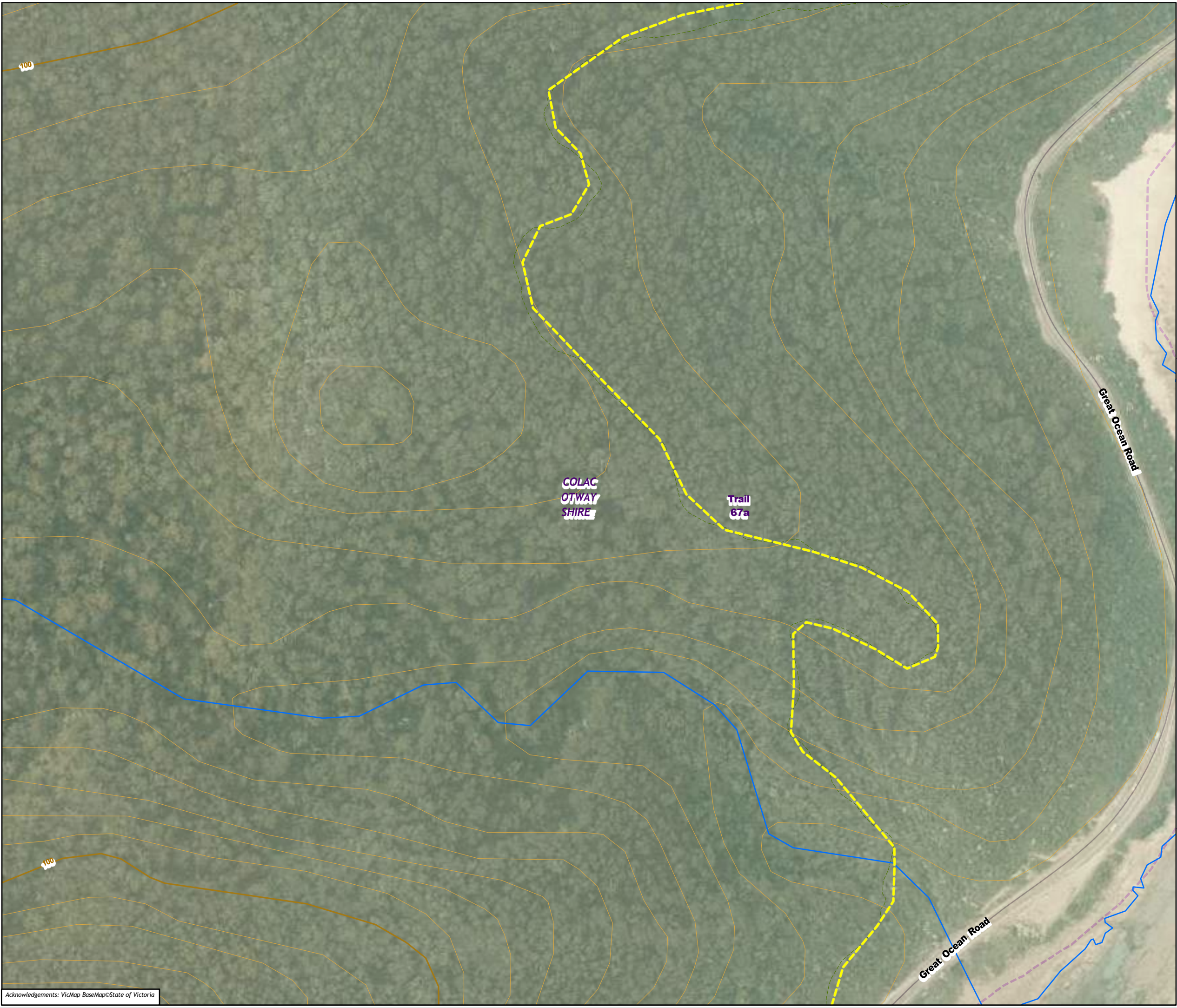
**Figure 5.72 Ecological features  
of the Assessment area**

0 20 40 60 80 100  
Metres  
Scale: 1:2,000 @ A3  
Coordinate System: GDA 1994 VICGRID94



Matter: 35990,  
Date: 13 December 2022 ,  
Prepared for: ML, Prepared by: MK, Last edited by: mknudsen  
Layout: 35990\_F4\_Eco  
Project: P:\35800s\35871\Mapping\  
35990\_GORT\_WT\_Ecology\_Figures.aprx



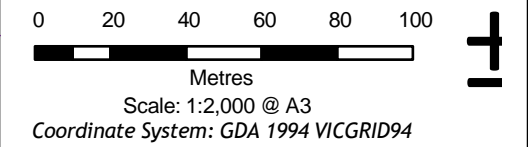


**Legend**

**Trail alignment**

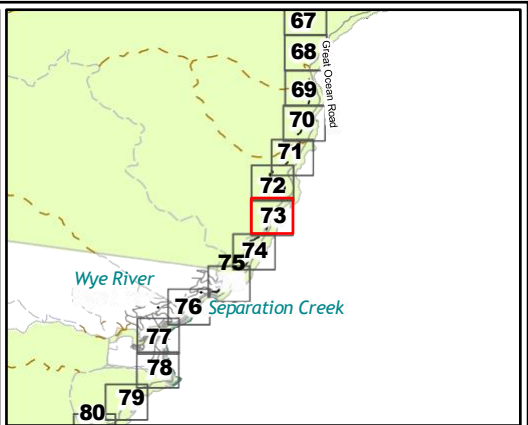
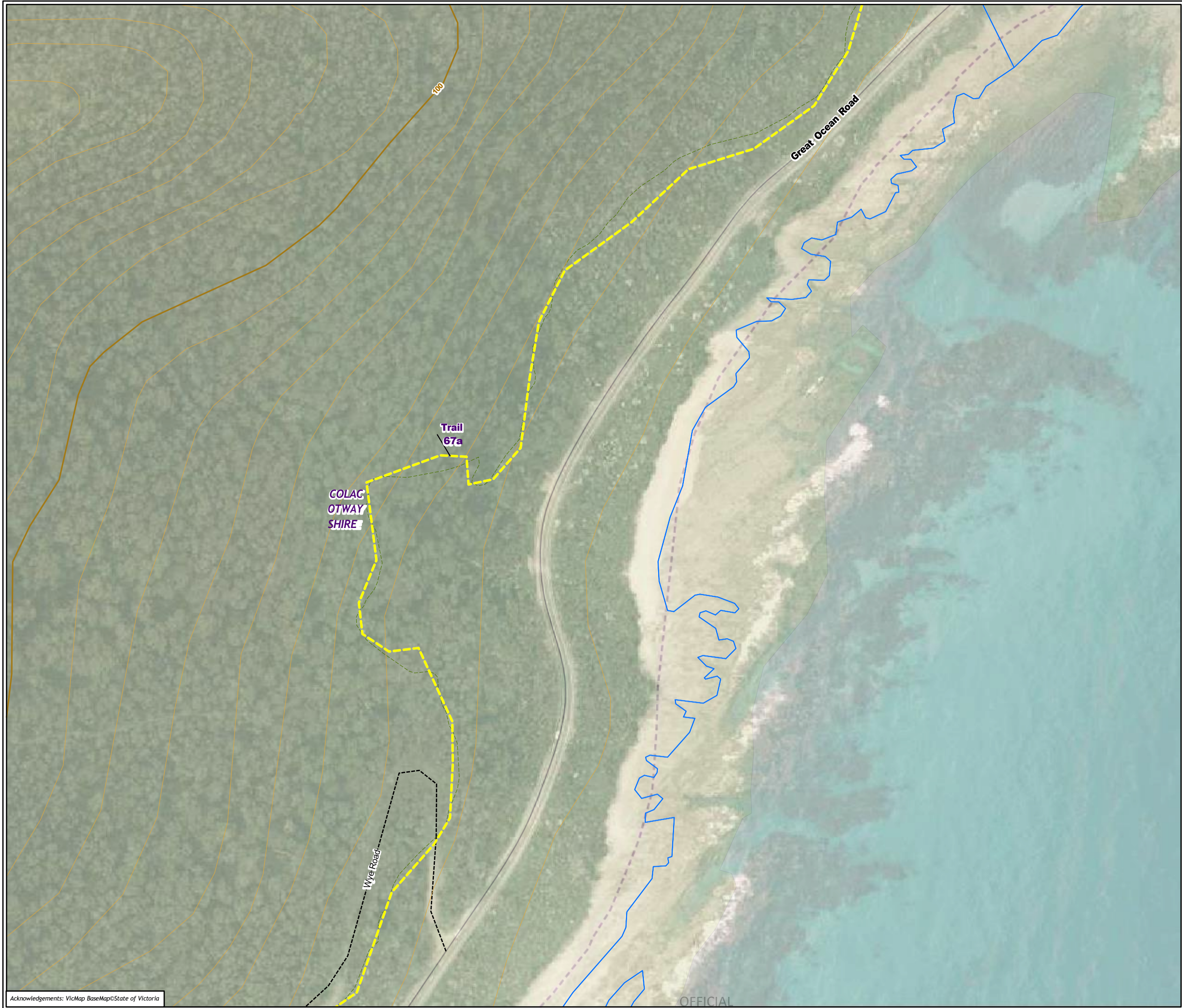
--- Existing Walking Trail

**Figure 5.73 Ecological features of the Assessment area**



Matter: 35990,  
Date: 13 December 2022 ,  
Prepared for: ML, Prepared by: MK, Last edited by: mknudsen  
Layout: 35990\_F4\_Eco  
Project: P:\35800s\35871\Mapping\  
35990\_GORT\_WT\_Ecology\_Figures.aprx



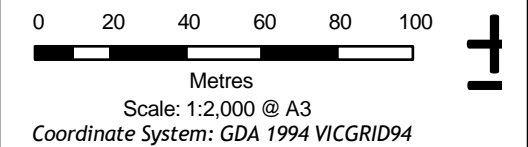


**Legend**

**Trail alignment**

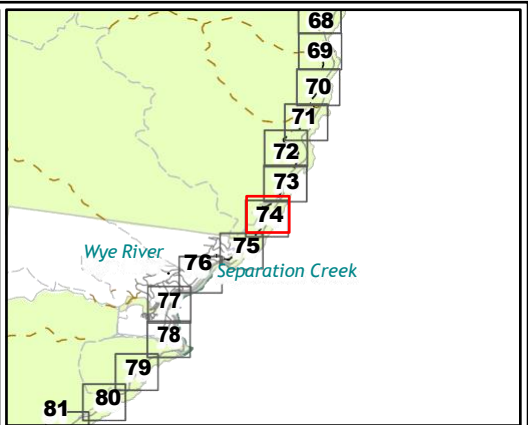
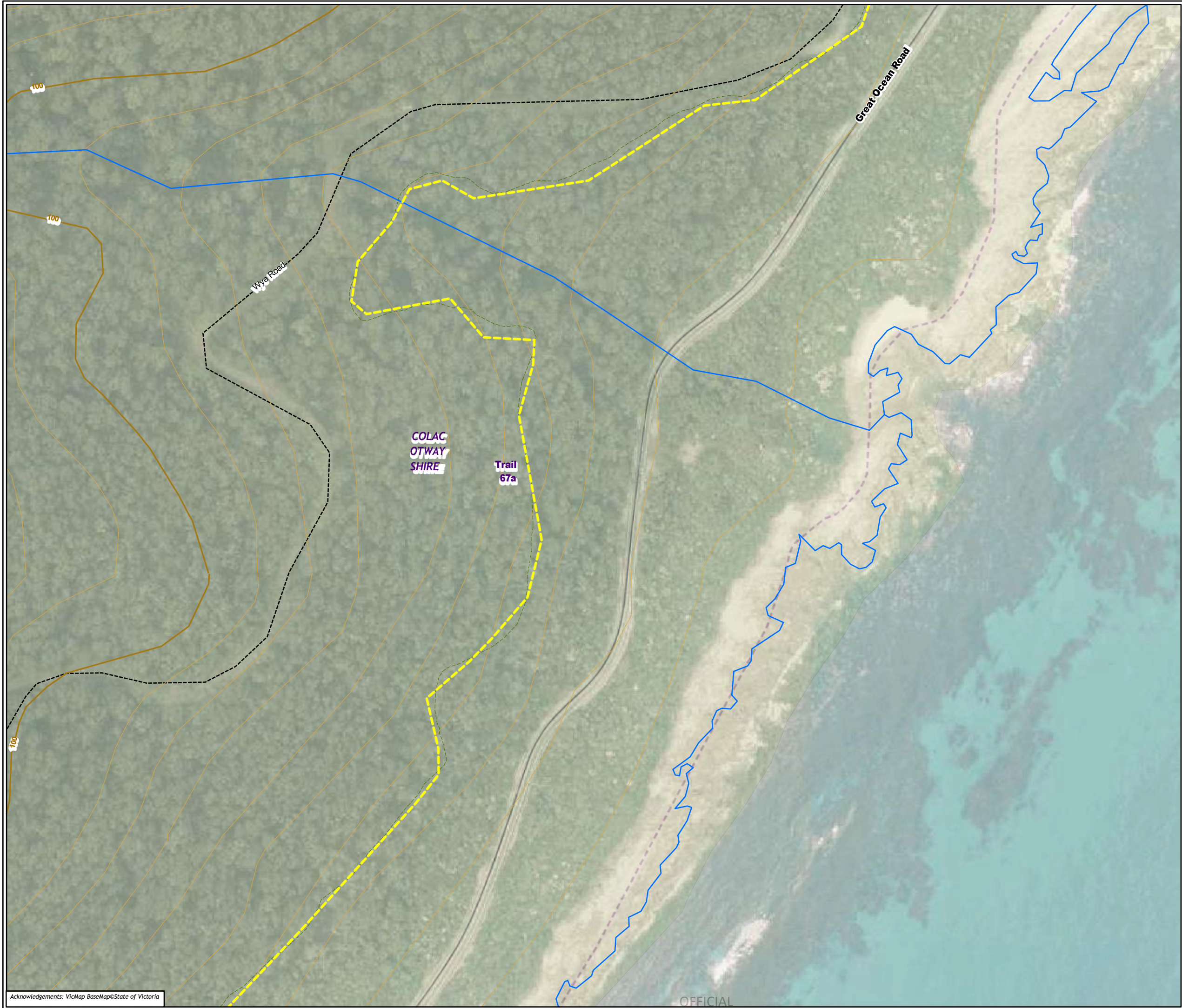
--- Existing Walking Trail

**Figure 5.74 Ecological features  
of the Assessment area**



Matter: 35990,  
Date: 13 December 2022 ,  
Prepared for: ML, Prepared by: MK, Last edited by: mknudsen  
Layout: 35990\_F4\_Eco  
Project: P:\35800s\35871\Mapping\  
35990\_GORT\_WT\_Ecology\_Figures.aprx





**Legend**

**Trail alignment**

--- Existing Walking Trail

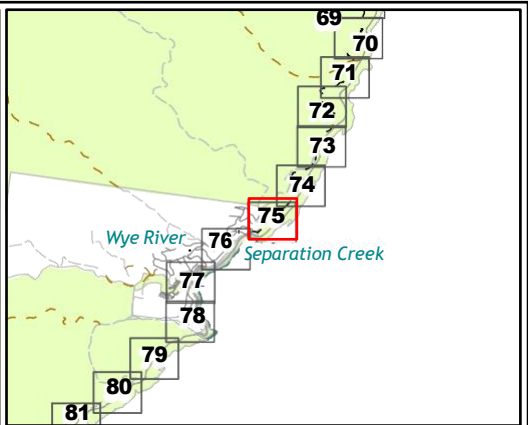
**Figure 5.75 Ecological features  
of the Assessment area**

0 20 40 60 80 100  
Metres  
Scale: 1:2,000 @ A3  
Coordinate System: GDA 1994 VICGRID94



Matter: 35990,  
Date: 13 December 2022 ,  
Prepared for: ML, Prepared by: MK, Last edited by: mknudsen  
Layout: 35990\_F4\_Eco  
Project: P:\35800a\35871\Mapping\  
35990\_GORT\_WT\_Ecology\_Figures.aprx





**Legend**

**Trail alignment**

- Existing Road/Footpath
- Existing Walking Trail

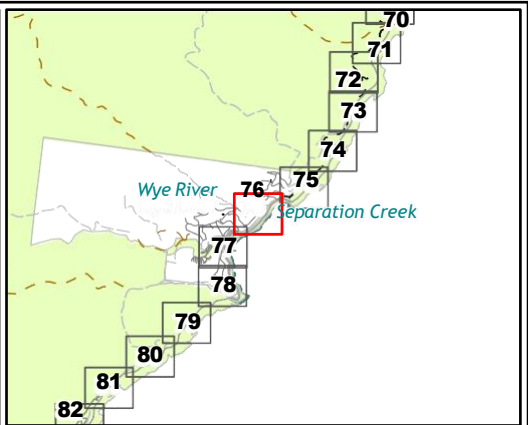
**Figure 5.76 Ecological features of the Assessment area**

0 20 40 60 80 100  
Metres  
Scale: 1:2,000 @ A3  
Coordinate System: GDA 1994 VICGRID94



Matter: 35990,  
Date: 13 December 2022 ,  
Prepared for: ML, Prepared by: MK, Last edited by: mknudsen  
Layout: 35990\_F4\_Eco  
Project: P:\35800s\35871\Mapping\  
35990\_GORT\_WT\_Ecology\_Figures.aprx



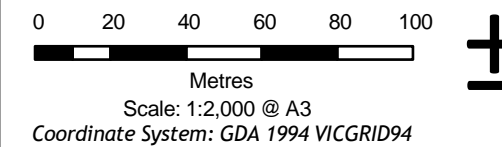


**Legend**

**Trail alignment**

- Existing Road/Footpath
- Existing Walking Trail

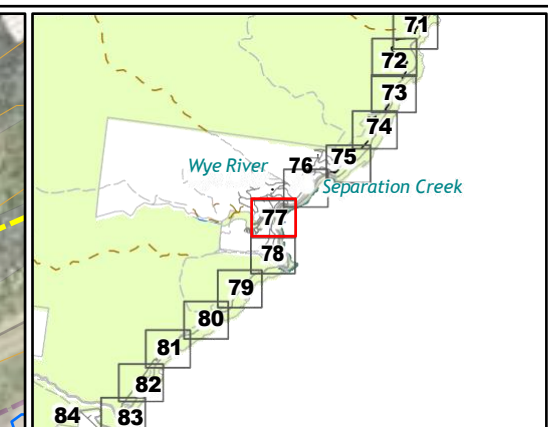
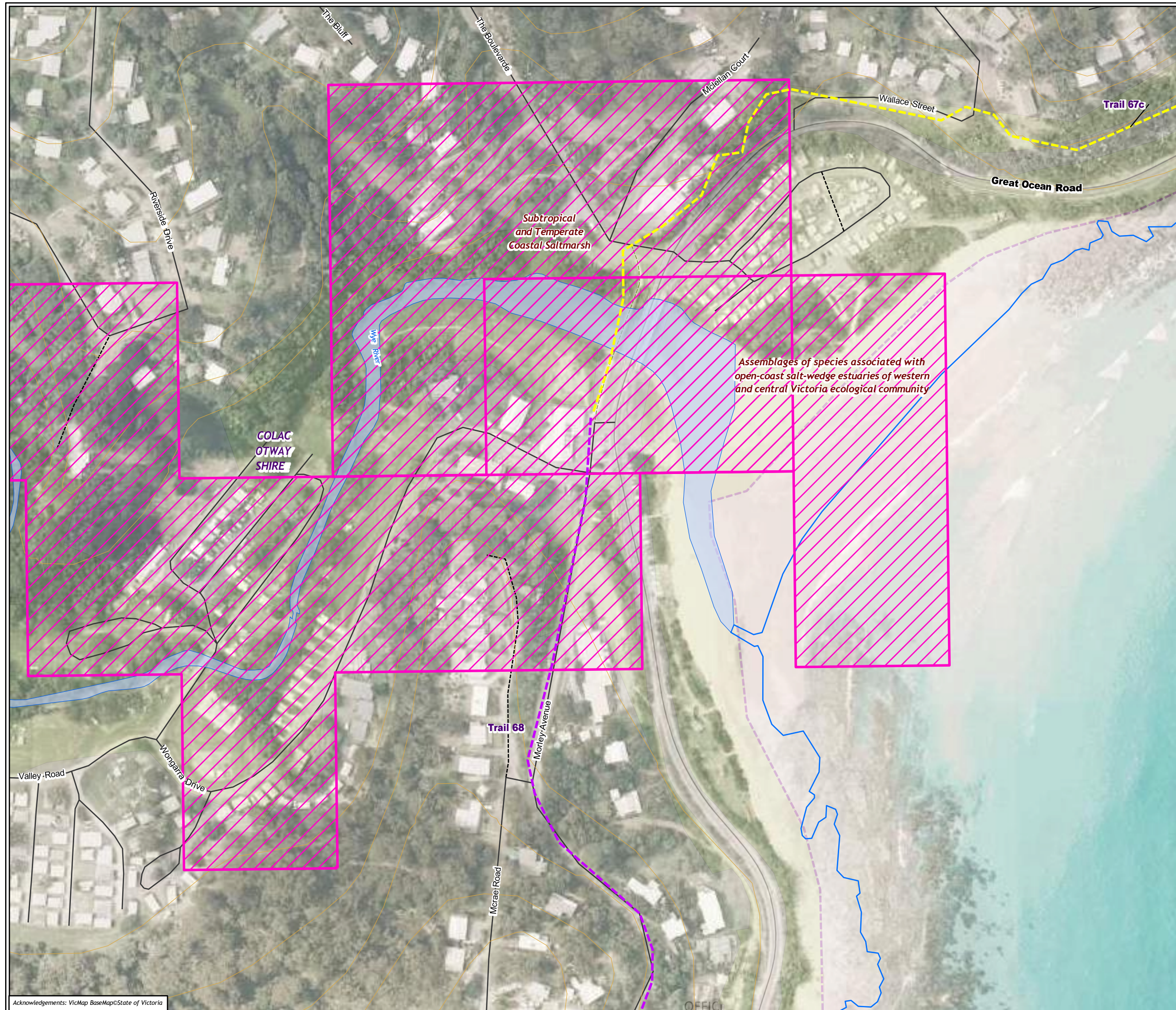
**Figure 5.77 Ecological features of the Assessment area**



Matter: 35990,  
Date: 13 December 2022 ,  
Prepared for: ML, Prepared by: MK, Last edited by: mknudsen  
Layout: 35990\_F4\_Eco  
Project: P:\35800s\35871\Mapping\  
35990\_GORT\_WT\_Ecology\_Figures.aprx

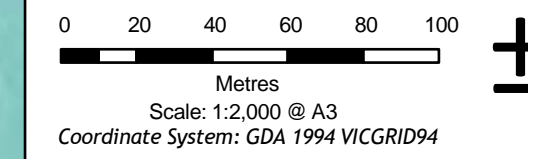
Acknowledgements: VicMap BaseMap©State of Victoria





- Legend**
- EPBC Act Ecological Communities of National Environmental Significance
  - Trail alignment**
    - Existing Road/Footpath
    - Existing Walking Trail

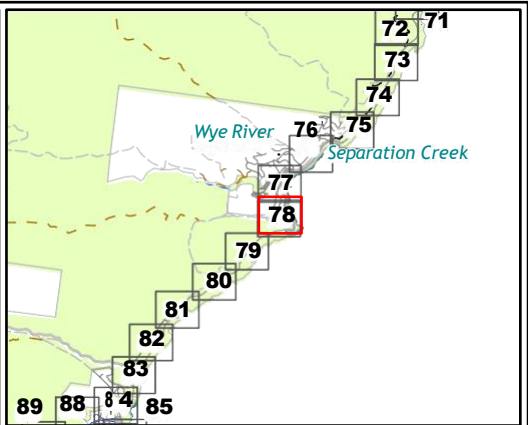
**Figure 5.78 Ecological features of the Assessment area**



Matter: 35990,  
Date: 13 December 2022 ,  
Prepared for: ML, Prepared by: MK, Last edited by: mknudsen  
Layout: 35990\_F4\_Eco  
Project: P:\35800s\35871\Mapping\  
35990\_GORT\_WT\_Ecology\_Figures.aprx

Acknowledgements: VicMap BaseMap©State of Victoria



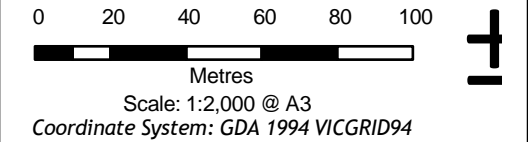


**Legend**

**Trail alignment**

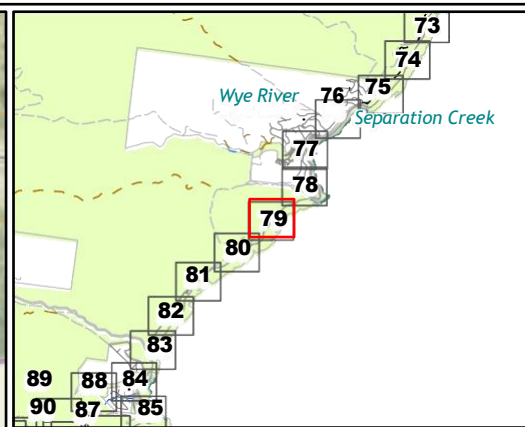
- Existing Road/Footpath
- Existing Walking Trail

**Figure 5.79 Ecological features of the Assessment area**



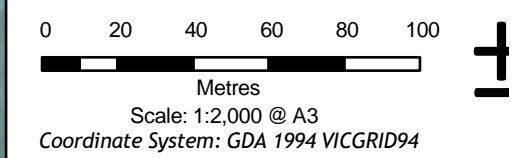
Matter: 35990,  
Date: 13 December 2022 ,  
Prepared for: ML, Prepared by: MK, Last edited by: mknudsen  
Layout: 35990\_F4\_Eco  
Project: P:\35800s\35871\Mapping\  
35990\_GORT\_WT\_Ecology\_Figures.aprx



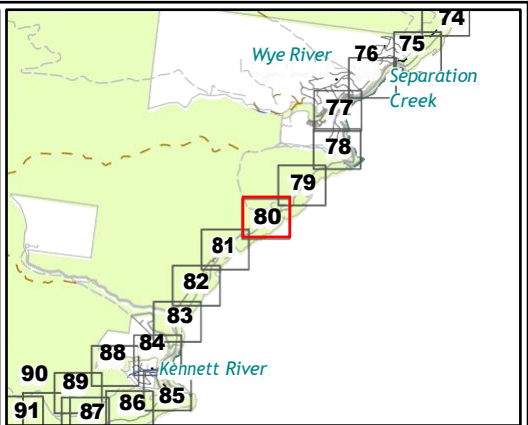
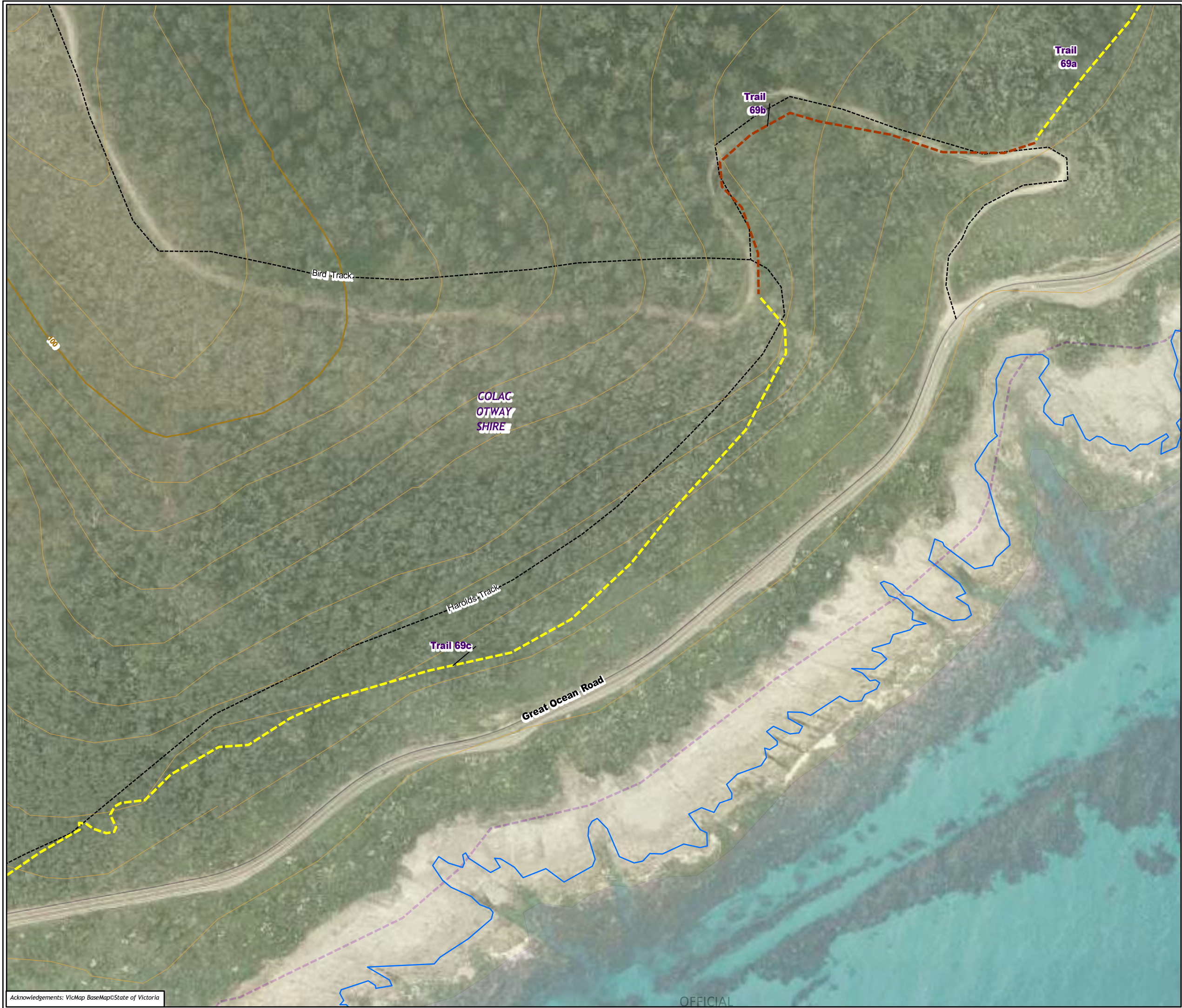


- Legend**
- Trail alignment**
- Existing MVO Track
  - Existing Walking Trail

**Figure 5.80 Ecological features of the Assessment area**







**Legend**

**Trail alignment**

- Existing MVO Track
- Existing Walking Trail

**Figure 5.81 Ecological features of the Assessment area**

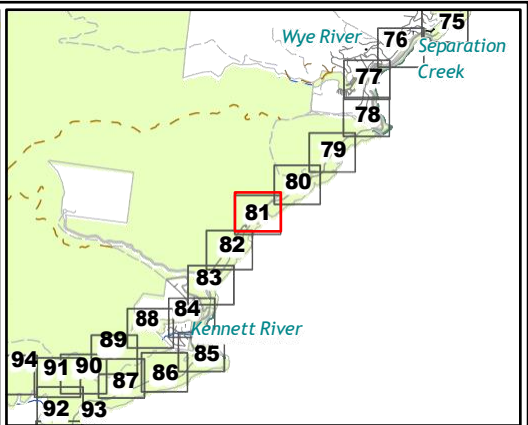
0 20 40 60 80 100

Metres  
Scale: 1:2,000 @ A3  
Coordinate System: GDA 1994 VICGRID94



Matter: 35990,  
Date: 13 December 2022 ,  
Prepared for: ML, Prepared by: MK, Last edited by: mknudsen  
Layout: 35990\_F4\_Eco  
Project: P:\35800s\35871\Mapping\  
35990\_GORT\_WT\_Ecology\_Figures.aprx





**Legend**

**Trail alignment**

--- Existing Walking Trail

**Figure 5.82 Ecological features of the Assessment area**

0 20 40 60 80 100

Metres

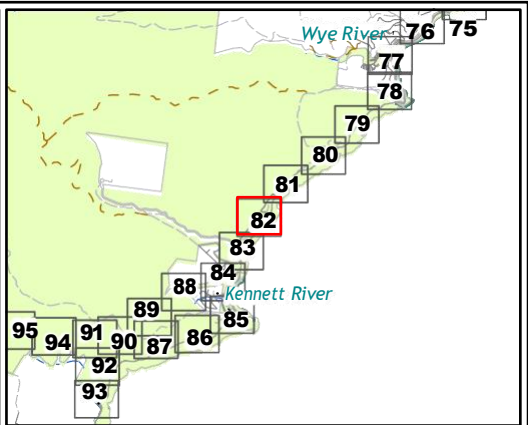
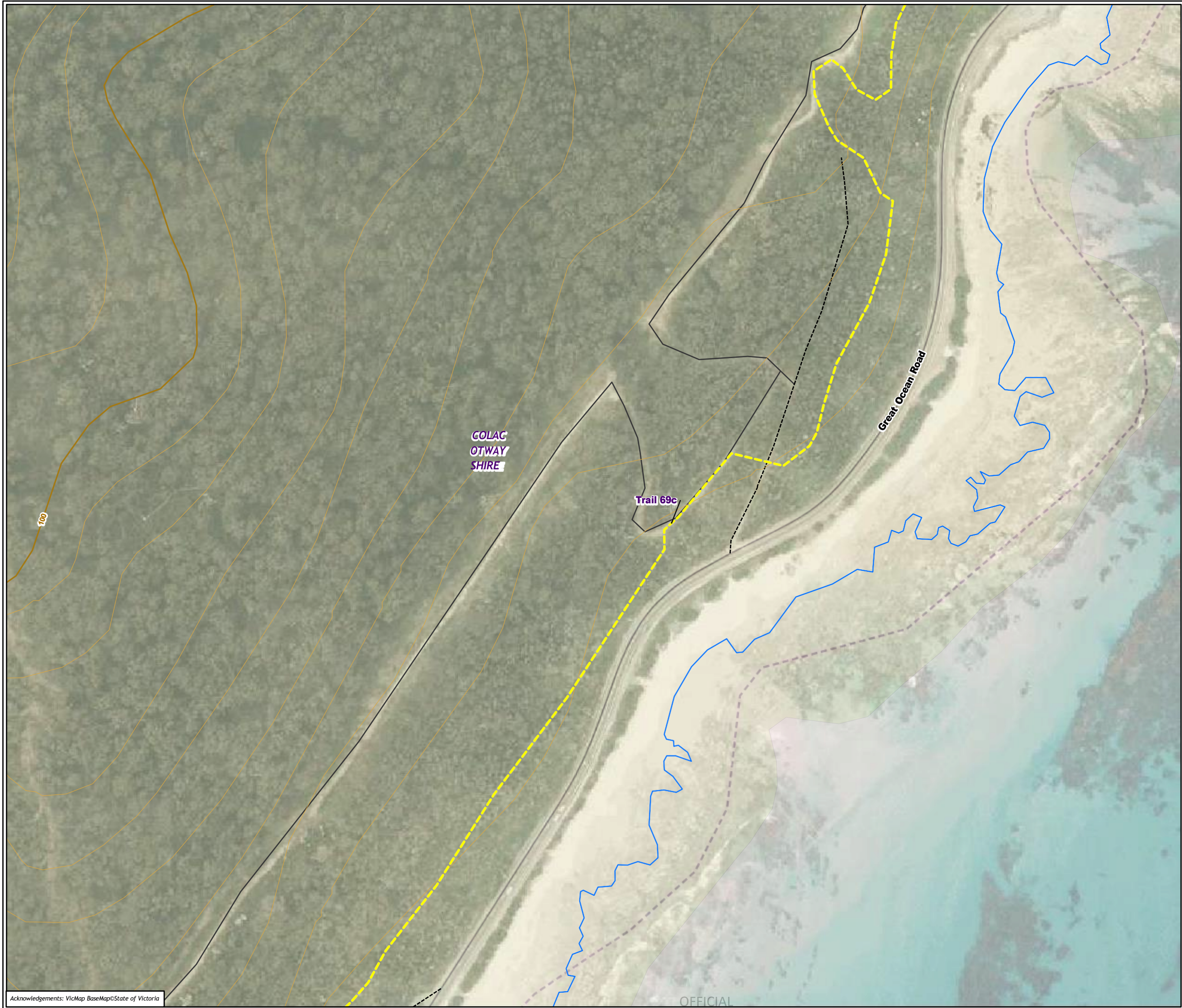
Scale: 1:2,000 @ A3

Coordinate System: GDA 1994 VICGRID94



Matter: 35990,  
Date: 13 December 2022 ,  
Prepared for: ML, Prepared by: MK, Last edited by: mknudsen  
Layout: 35990\_F4\_Eco  
Project: P:\35800s\35871\Mapping\  
35990\_GORT\_WT\_Ecology\_Figures.aprx





**Legend**

**Trail alignment**

--- Existing Walking Trail

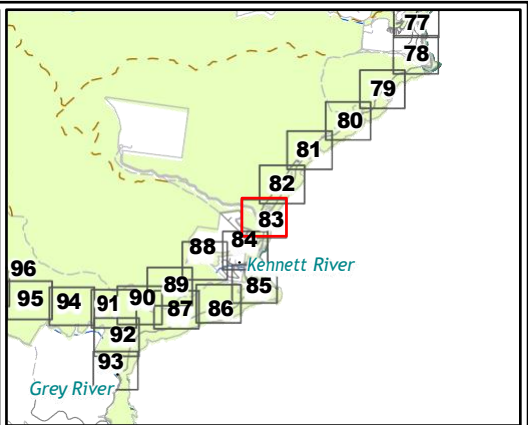
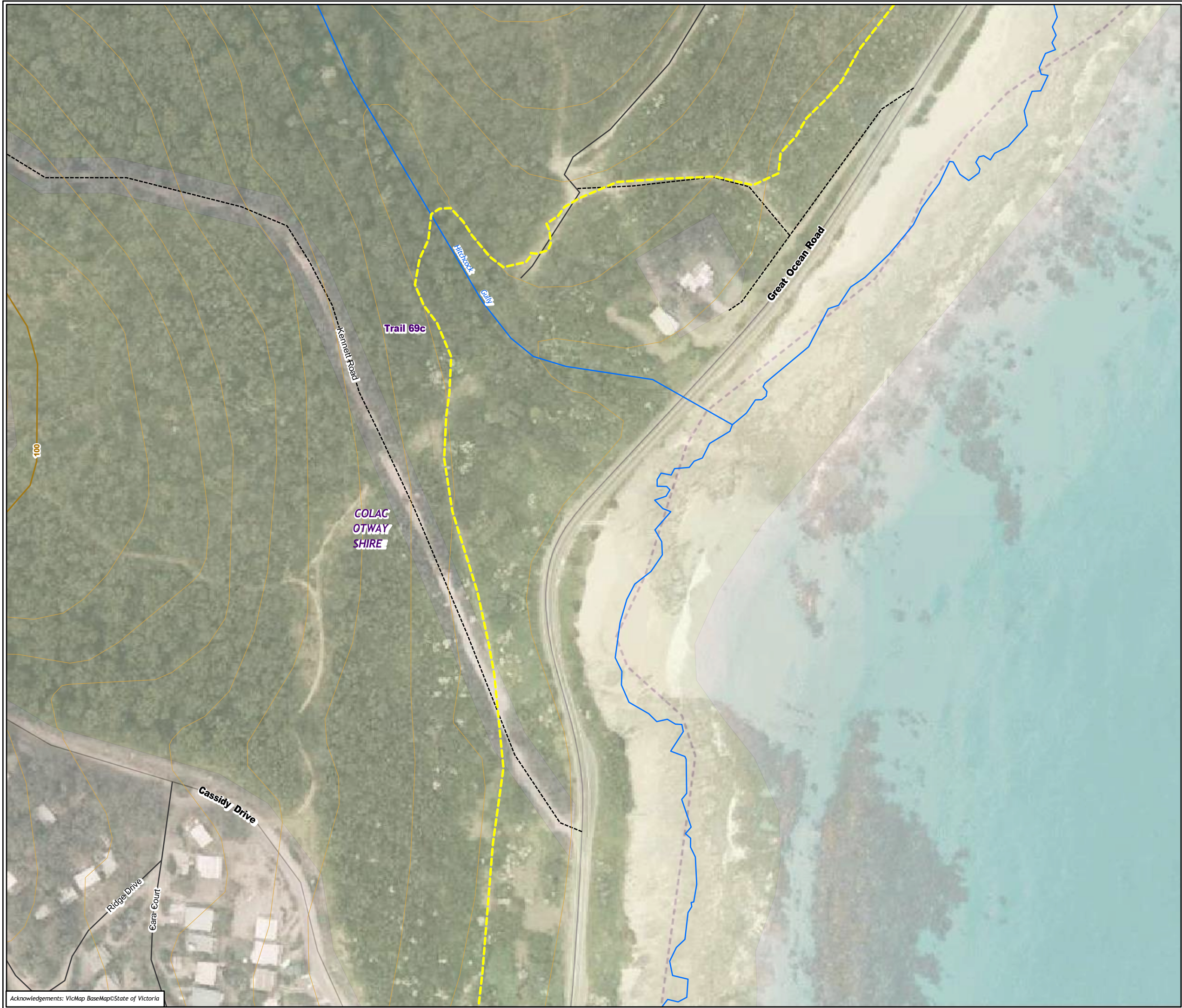
**Figure 5.83 Ecological features of the Assessment area**

0 20 40 60 80 100  
Metres  
Scale: 1:2,000 @ A3  
Coordinate System: GDA 1994 VICGRID94



Matter: 35990,  
Date: 13 December 2022 ,  
Prepared for: ML, Prepared by: MK, Last edited by: mknudsen  
Layout: 35990\_F4\_Eco  
Project: P:\35800s\35871\Mapping\  
35990\_GORT\_WT\_Ecology\_Figures.aprx





**Legend**

**Trail alignment**

--- Existing Walking Trail

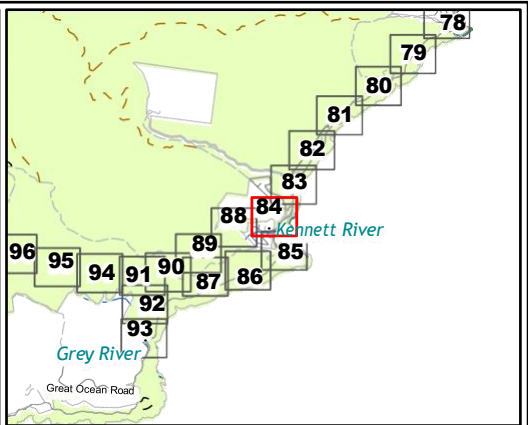
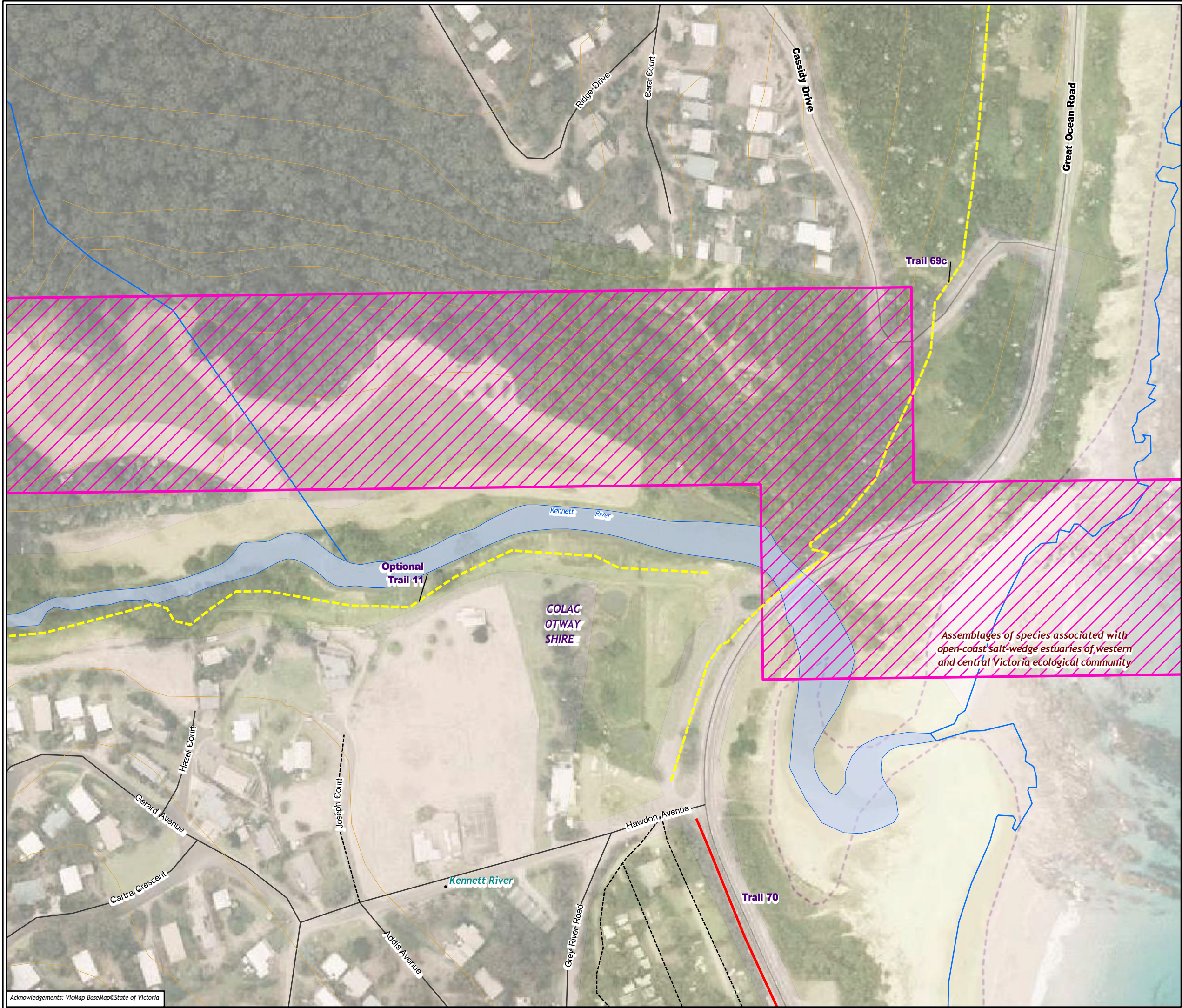
**Figure 5.84 Ecological features of the Assessment area**

0 20 40 60 80 100  
Metres  
Scale: 1:2,000 @ A3  
Coordinate System: GDA 1994 VICGRID94



Matter: 35990,  
Date: 13 December 2022 ,  
Prepared for: ML, Prepared by: MK, Last edited by: mknudsen  
Layout: 35990\_F4\_Eco  
Project: P:\35800s\35871\Mapping\  
35990\_GORT\_WT\_Ecology\_Figures.aprx

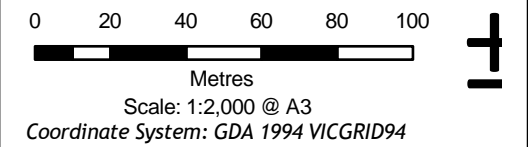




- Legend**
- EPBC Act Ecological Communities of National Environmental Significance
  - Trail alignment**
    - Existing Walking Trail
    - New Walking Trail

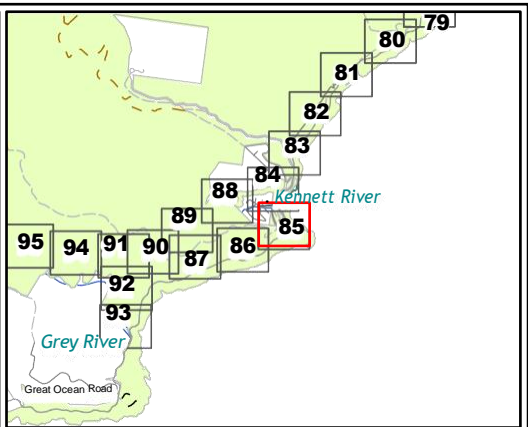
Assemblages of species associated with open-coast salt-wedge estuaries of western and central Victoria ecological community

**Figure 5.85 Ecological features of the Assessment area**



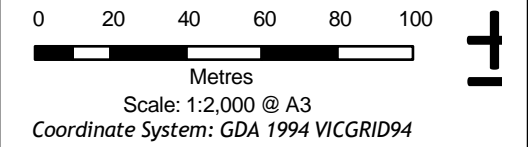
Matter: 35990,  
Date: 13 December 2022 ,  
Prepared for: ML, Prepared by: MK, Last edited by: mknudsen  
Layout: 35990\_F4\_Eco  
Project: P:\35800s\35871\Mapping\  
35990\_GORT\_WT\_Ecology\_Figures.aprx





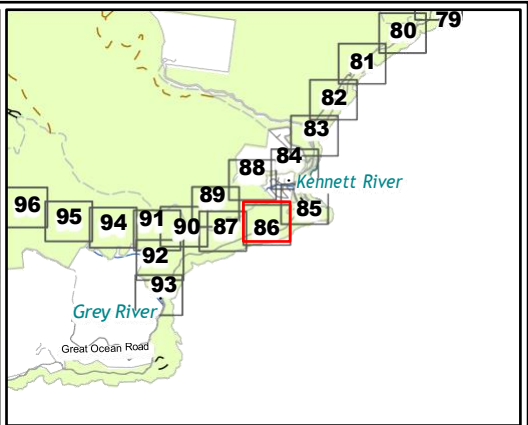
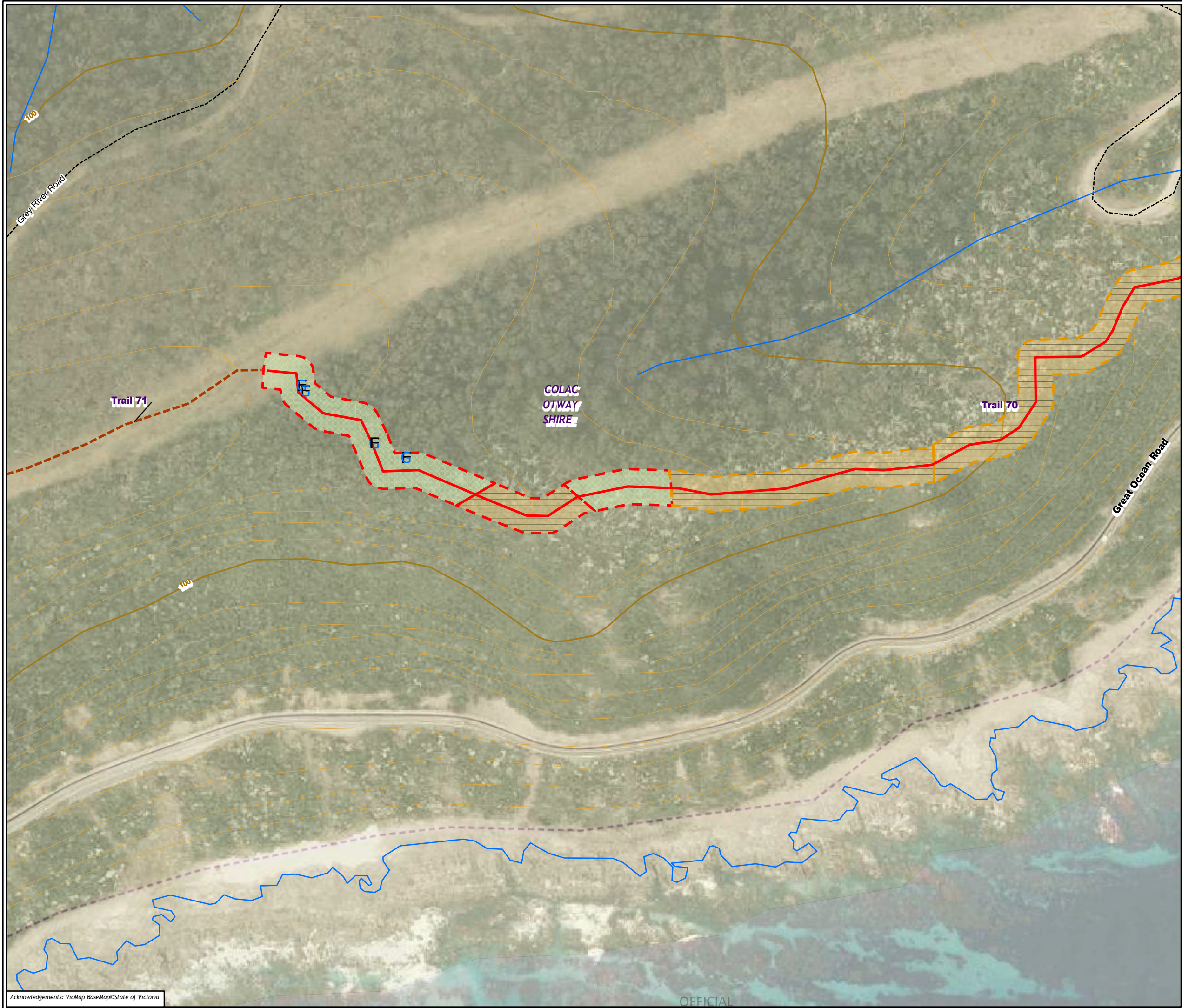
- Legend**
- Trail alignment**
- New Walking Trail
- Habitat zone condition/quality**
- Moderate
  - Low
- Habitat Zone (EVC)**
- (OtR\_0161) Coastal Headland
  - Scrub

**Figure 5.86 Ecological features of the Assessment area**



Matter: 35990,  
Date: 13 December 2022 ,  
Prepared for: ML, Prepared by: MK, Last edited by: mknudsen  
Layout: 35990\_F4\_Eco  
Project: P:\35800s\35871\Mapping\  
35990\_GORT\_WT\_Ecology\_Figures.aprx





**Legend**

**Trail alignment**

- Existing MVO Track
- New Walking Trail

**Large trees in patch**

- Eucalyptus globulus* subsp. *globulus* - Southern Blue-gum

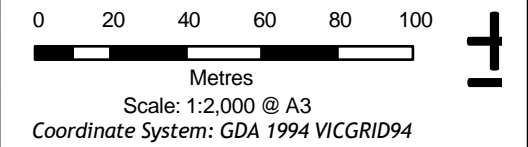
**Habitat zone condition/quality**

- High
- Moderate

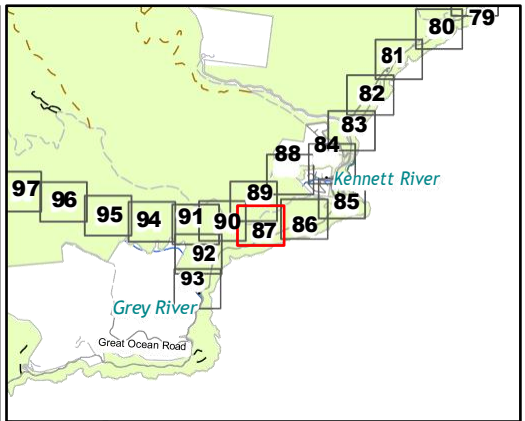
**Habitat Zone (EVC)**

- (OtR\_0045) Shrubby Foothill Forest
- (OtR\_0161) Coastal Headland Scrub

**Figure 5.87 Ecological features of the Assessment area**







**Legend**

**Trail alignment**

- Existing MVO Track
- New Walking Trail

**Large trees in patch**

- Dead
- Acacia melanoxylon* - Blackwood
- Eucalyptus aromaphloia* - Scentbark
- Eucalyptus globulus* - Southern Blue-gum
- Eucalyptus globulus subsp. globulus* - Southern Blue-gum

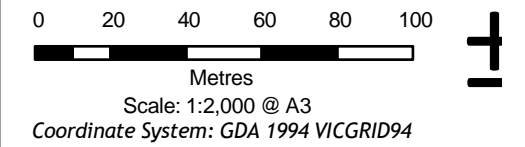
**Habitat zone condition/quality**

- High

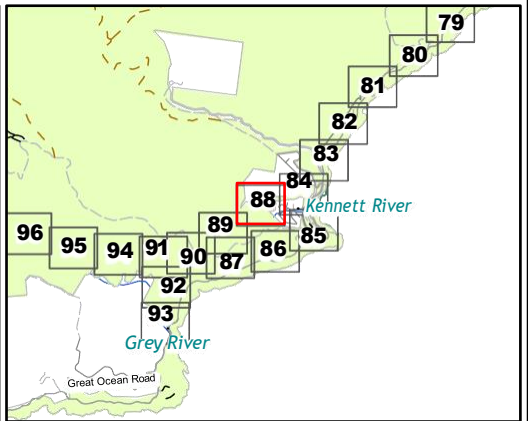
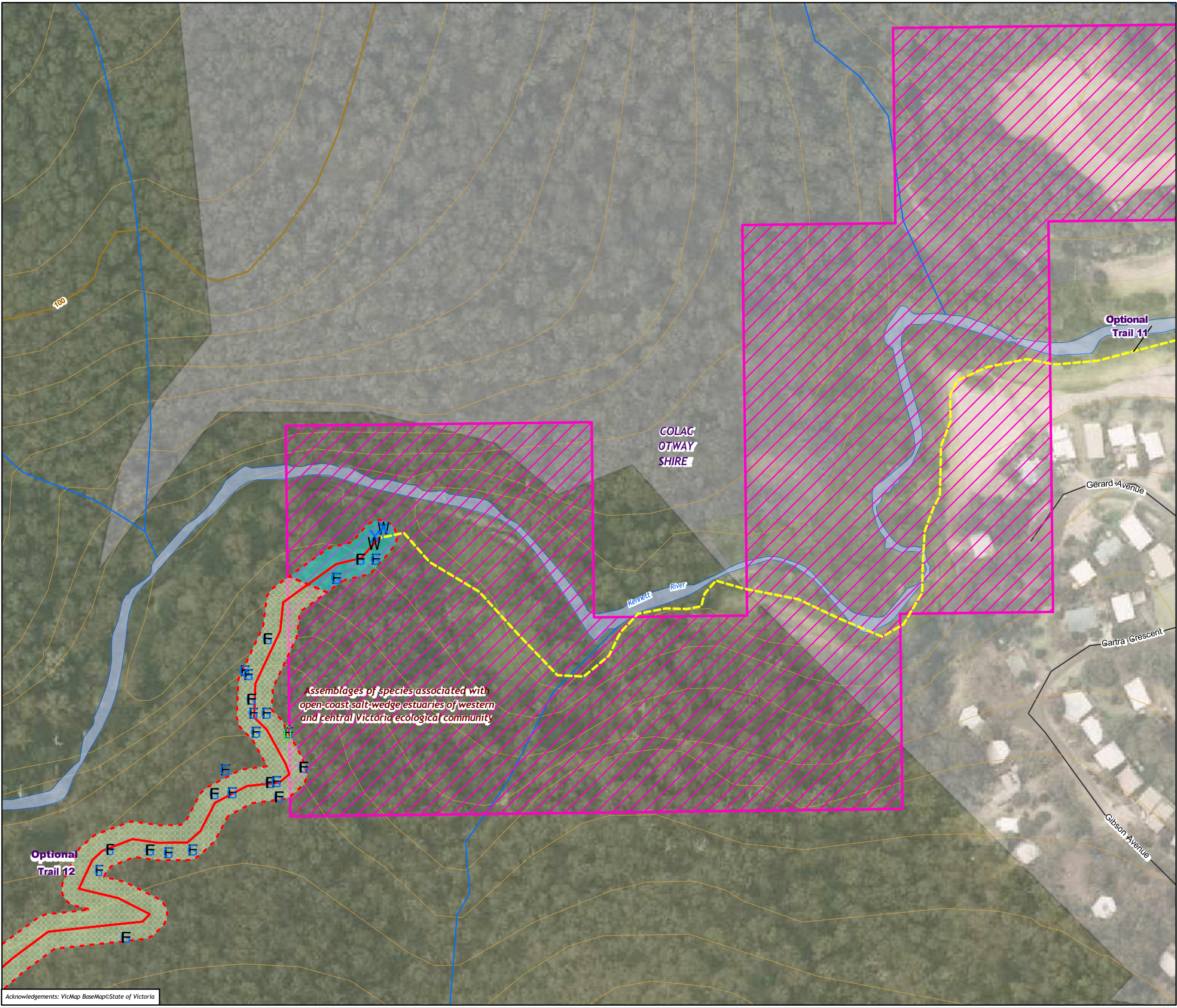
**Habitat Zone (EVC)**

- (OtR\_0045) Shrubby Foothill Forest
- (OtR\_0161) Coastal Headland Scrub

**Figure 5.88 Ecological features of the Assessment area**







**Legend**

EPBC Act Ecological Communities  
of National Environmental  
Significance

**Trail alignment**

Existing Walking Trail  
New Walking Trail

**Large trees in patch**

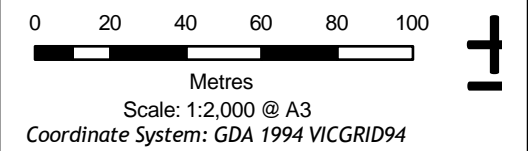
U *Eucalyptus obliqua* - Messmate  
Stringybark  
W *Eucalyptus viminalis* subsp. *viminalis*  
- Manna Gum  
E *Eucalyptus globulus* subsp. *globulus* -  
Southern Blue-gum

**Habitat zone condition/quality**

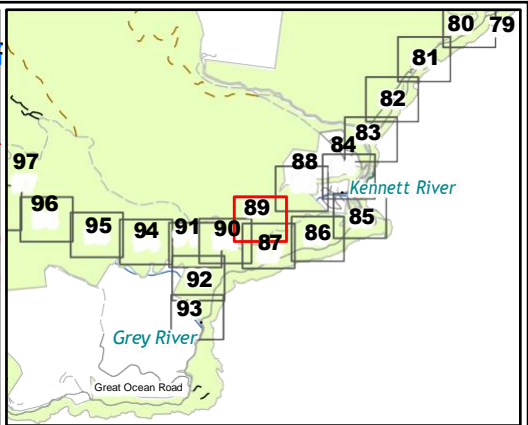
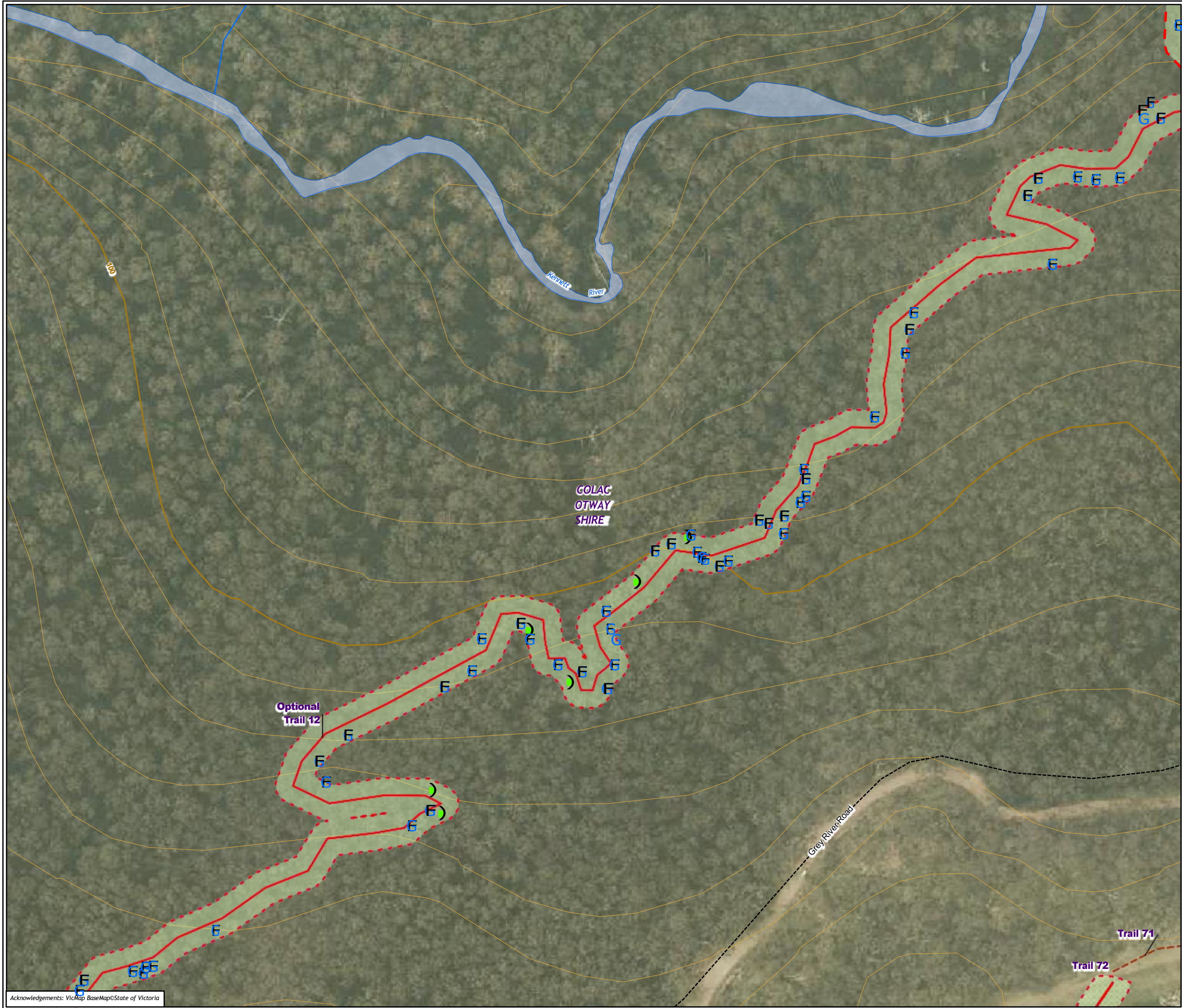
High  
Habitat Zone (EVC)

(OtR\_0018) Riparian Forest  
(OtR\_0045) Shrubby Foothill Forest

**Figure 5.89 Ecological features  
of the Assessment area**







**Legend**

**Trail alignment**

- Existing MVO Track
- New Walking Trail

**Large trees in patch**

- Dead
- Eucalyptus globulus* subsp. *globulus* - Southern Blue-gum

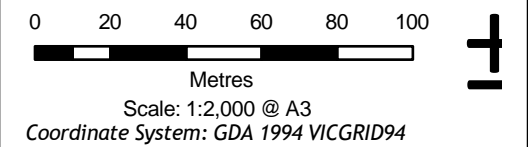
**Habitat zone condition/quality**

- High

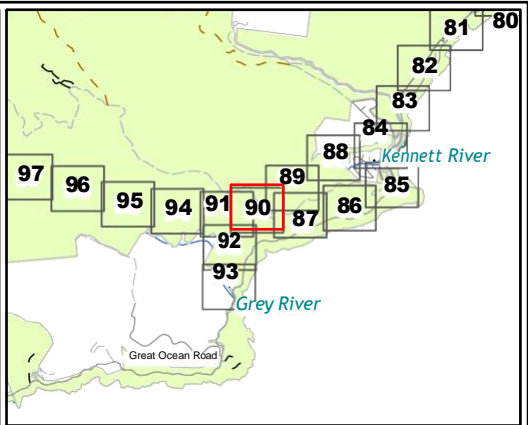
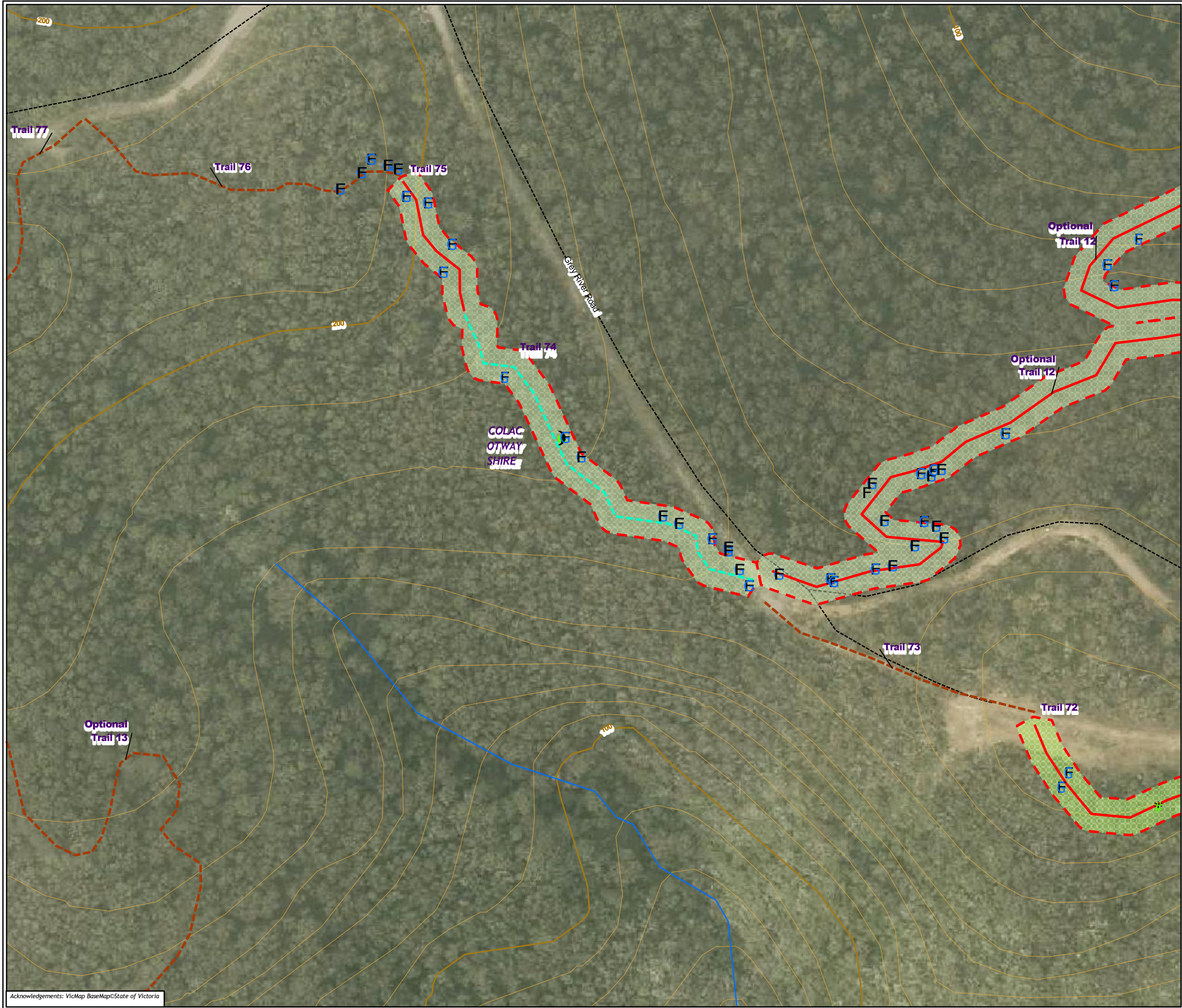
**Habitat Zone (EVC)**

- (OtR\_0045) Shrubby Foothill Forest

**Figure 5.90 Ecological features of the Assessment area**







**Legend**

**Trail alignment**

- Existing Informal Trail
- Existing MVO Track
- New Walking Trail

**Large trees in patch**

- Dead
- Acacia melanoxylon* - Blackwood
- Eucalyptus globulus subsp. globulus* - Southern Blue-gum

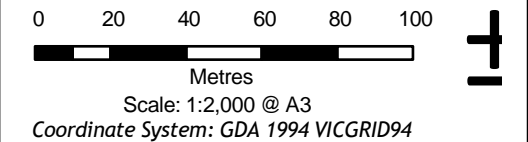
**Habitat zone condition/quality**

- High

**Habitat Zone (EVC)**

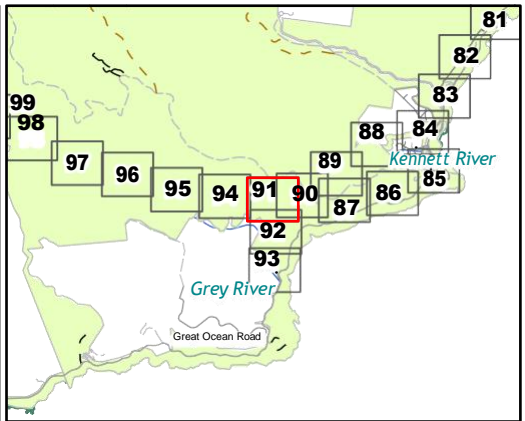
- (OtR\_0045) Shrubby Foothill Forest

**Figure 5.91 Ecological features of the Assessment area**



Matter: 35990,  
Date: 13 December 2022 ,  
Prepared for: ML, Prepared by: MK, Last edited by: mknudsen  
Layout: 35990\_F4\_Eco  
Project: P:\35800s\35871\Mapping\  
35990\_GORT\_WT\_Ecology\_Figures.aprx





**Legend**

**Trail alignment**

- Existing Informal Trail
- Existing MVO Track
- New Walking Trail

**Large trees in patch**

- Eucalyptus globulus subsp. globulus* - Southern Blue-gum

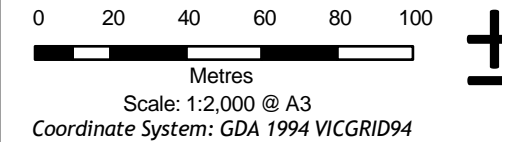
**Habitat zone condition/quality**

- High

**Habitat Zone (EVC)**

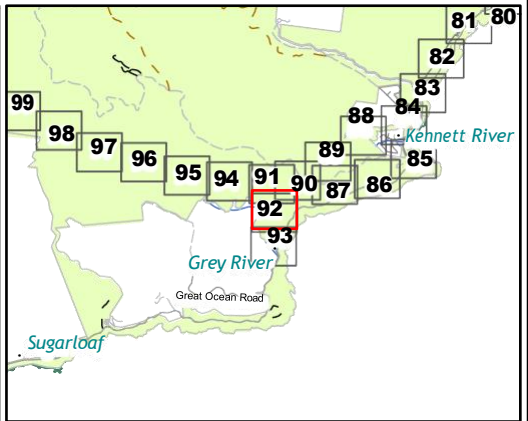
- (OtR\_0045) Shrubby Foothill Forest

**Figure 5.92 Ecological features of the Assessment area**



Matter: 35990,  
Date: 13 December 2022 ,  
Prepared for: ML, Prepared by: MK, Last edited by: mknudsen  
Layout: 35990\_F4\_Eco  
Project: P:\35800s\35871\Mapping\  
35990\_GORT\_WT\_Ecology\_Figures.aprx





**Legend**

**Trail alignment**

- Existing MVO Track
- New Walking Trail

**Large trees in patch**

- Eucalyptus globulus* - Southern Blue-gum
- Eucalyptus obliqua* - Messmate Stringybark

**Habitat zone condition/quality**

- High

**Habitat Zone (EVC)**

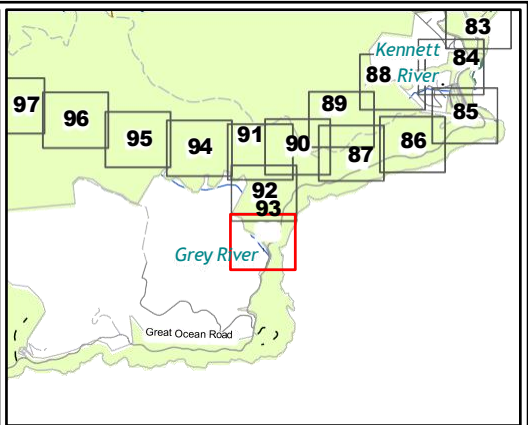
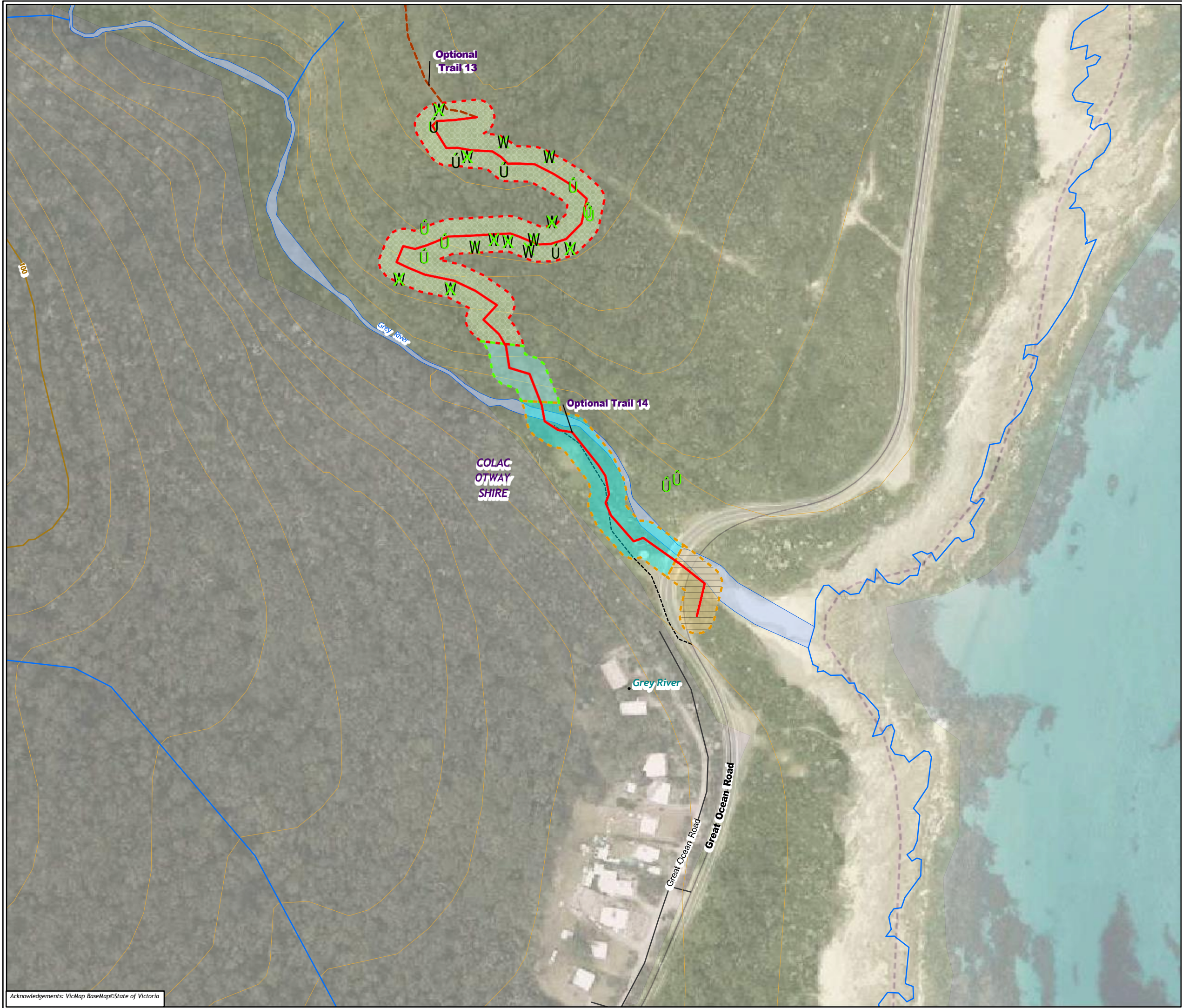
- (OtR\_0045) Shrubby Foothill Forest

**Figure 5.93 Ecological features of the Assessment area**

0 20 40 60 80 100  
Metres  
Scale: 1:2,000 @ A3  
Coordinate System: GDA 1994 VICGRID94

Matter: 35990,  
Date: 13 December 2022 ,  
Prepared for: ML, Prepared by: MK, Last edited by: mknudsen  
Layout: 35990\_F4\_Eco  
Project: P:\35800s\35871\Mapping\  
35990\_GORT\_WT\_Ecology\_Figures.aprx





**Legend**

**Trail alignment**

- Existing MVO Track
- New Walking Trail

**Large trees in patch**

- Eucalyptus globulus* - Southern Blue-gum
- Eucalyptus obliqua* - Messmate Stringybark

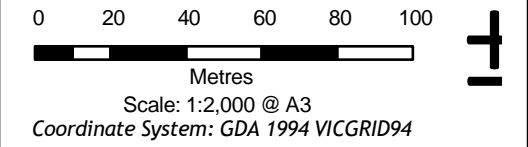
**Habitat zone condition/quality**

- High
- Moderate
- Low

**Habitat Zone (EVC)**

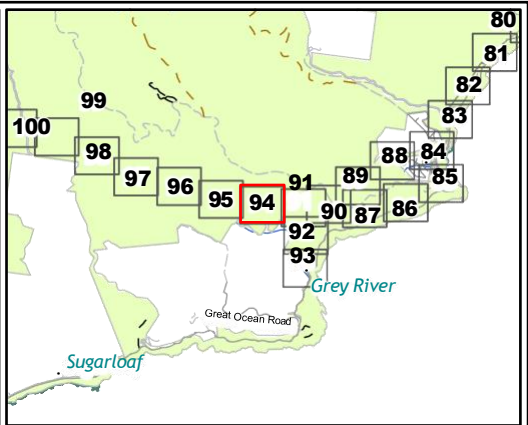
- (OtR\_0018) Riparian Forest
- (OtR\_0045) Shrubby Foothill Forest
- (OtR\_0161) Coastal Headland Scrub

**Figure 5.94 Ecological features of the Assessment area**



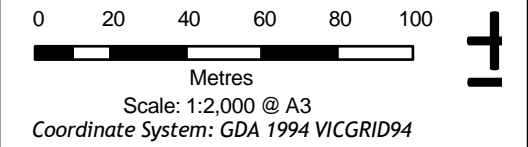
Matter: 35990,  
Date: 13 December 2022 ,  
Prepared for: ML, Prepared by: MK, Last edited by: mknudsen  
Layout: 35990\_F4\_Eco  
Project: P:\35800s\35871\Mapping\  
35990\_GORT\_WT\_Ecology\_Figures.aprx



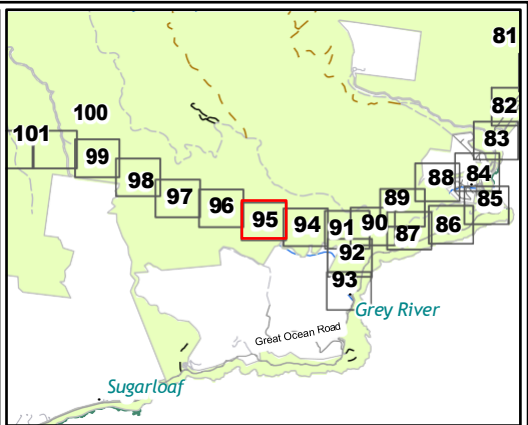


- Legend**
- Assessment corridor - Unassessed
  - Trail alignment**
    - Existing Informal Trail
    - New Walking Trail

**Figure 5.95 Ecological features of the Assessment area**

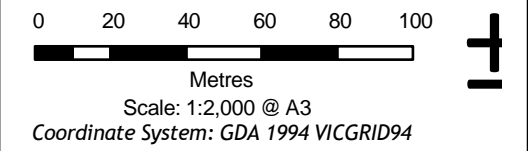






- Legend**
- Assessment corridor - Unassessed
  - Trail alignment**
    - New Walking Trail

**Figure 5.96 Ecological features of the Assessment area**



Matter: 35990,  
Date: 13 December 2022 ,  
Prepared for: ML, Prepared by: MK, Last edited by: mknudsen  
Layout: 35990\_F4\_Eco  
Project: P:\35800s\35871\Mapping\  
35990\_GORT\_WT\_Ecology\_Figures.aprx