

Demographics of ageing



Presentation to Plan Melbourne Working Group
on Residential Aged Care Facilities,

Fiona McKenzie, Principal Researcher, DELWP

9 October 2017



Environment,
Land, Water
and Planning

The ageing trend

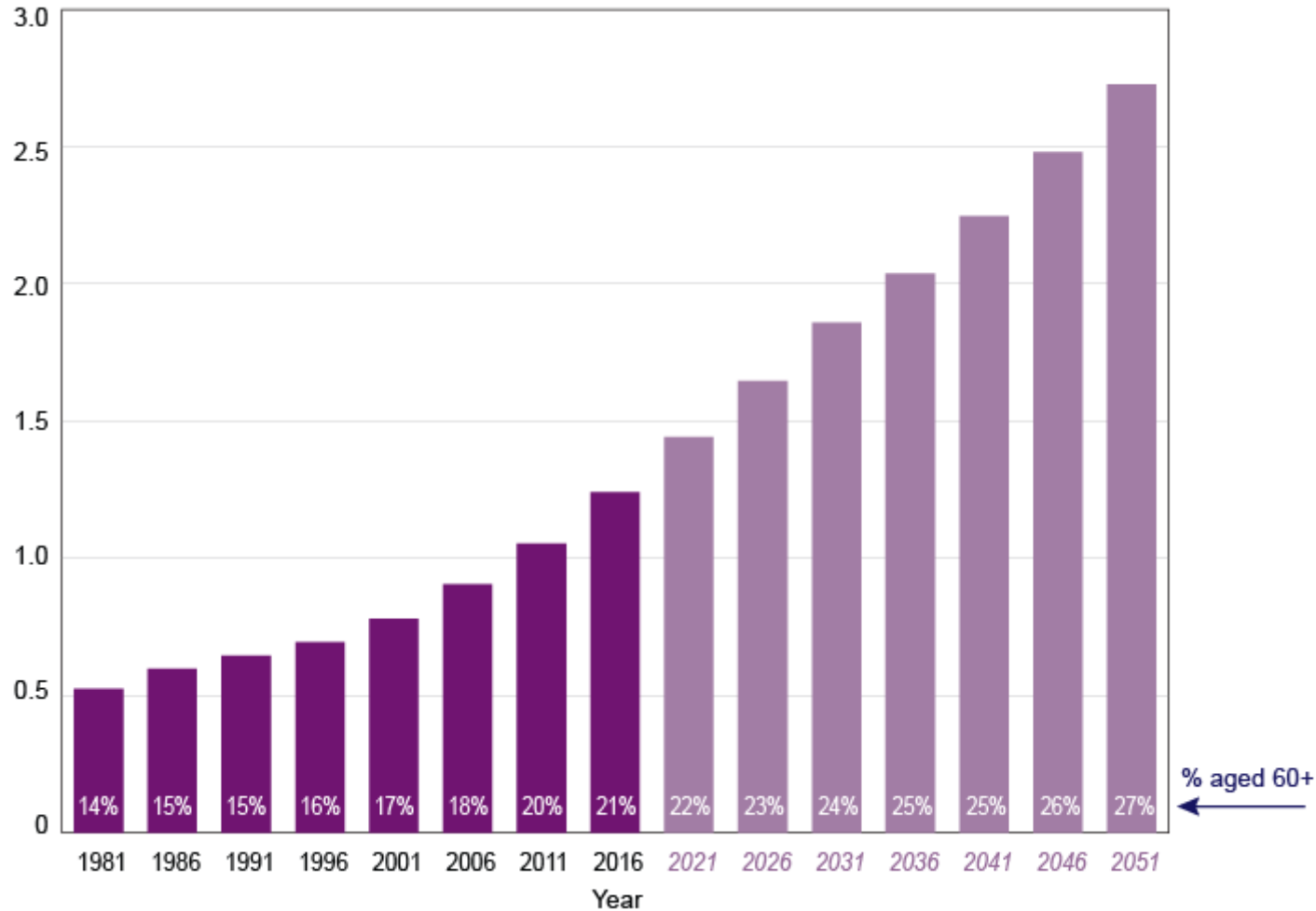
- Increasing survival
 - In 2012 more than 90% of our population were living past age 60
 - In the late 19th century less than 50% did
- Declining fertility
 - Average number of children per woman declined rapidly after 1971
 - Victoria has been below 'replacement' level fertility since the mid-1970s
 - Children now form a smaller % of our population than in the past
- Increasing numbers of older people ...



Number and proportion of Victorians aged 60 years and over

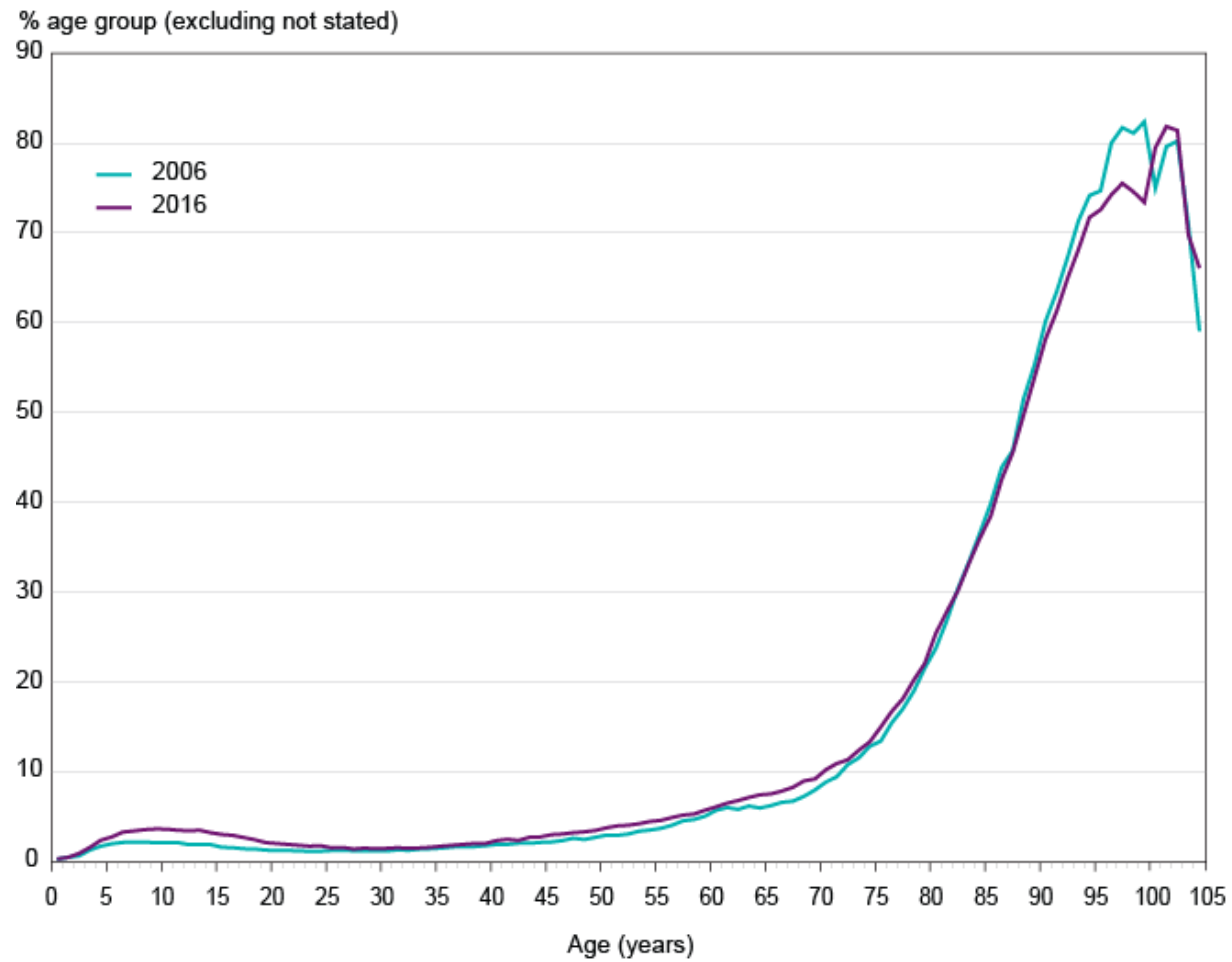
1981 to 2016 (actual) and 2021 to 2051 (projected)

Number aged 60+ (millions)



Need for assistance by age

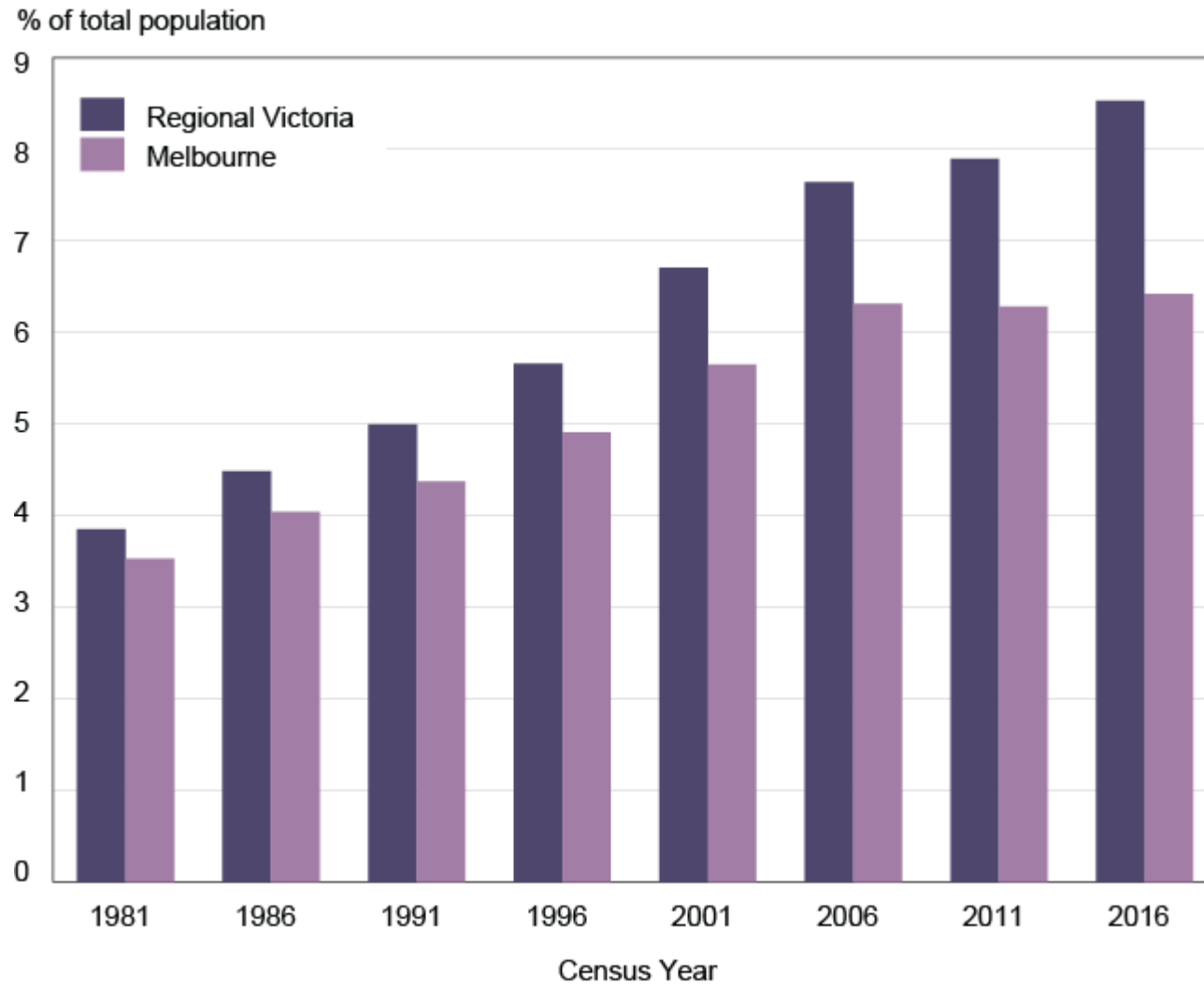
Victoria 2006 and 2016



Source: ABS Census 2006, 2016

Structural ageing

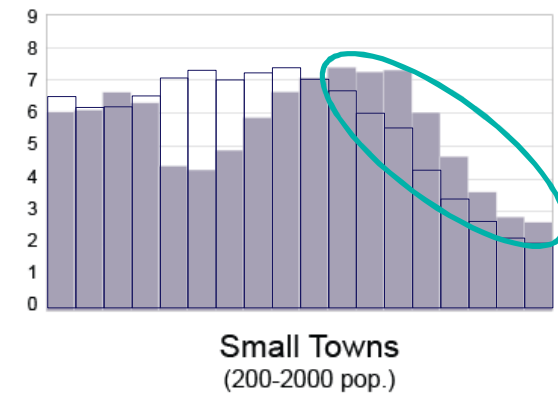
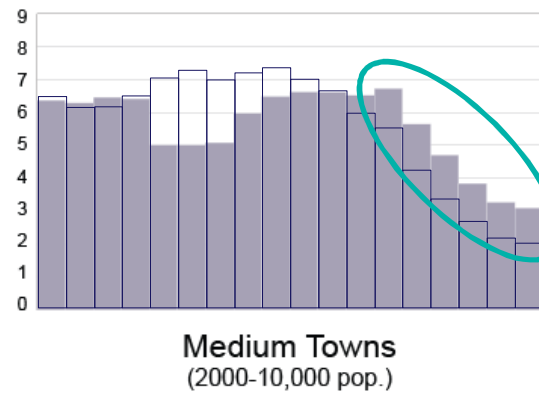
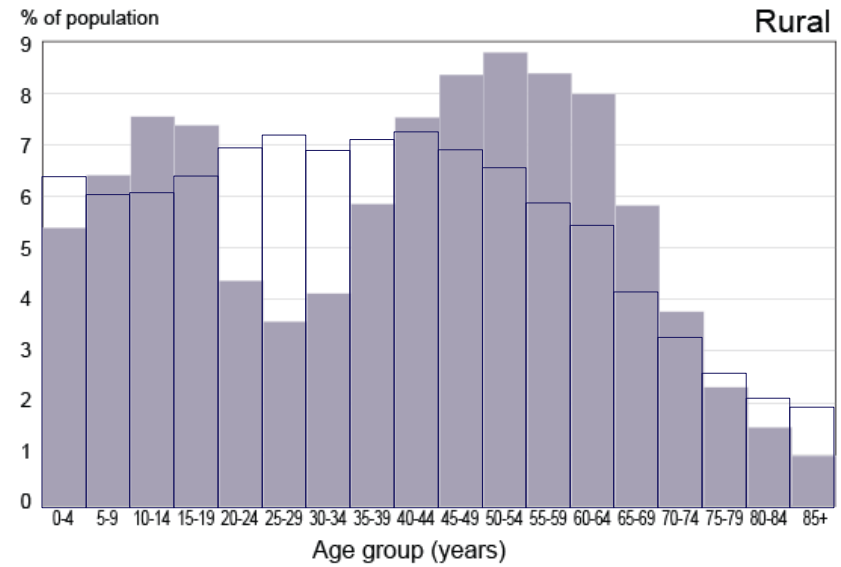
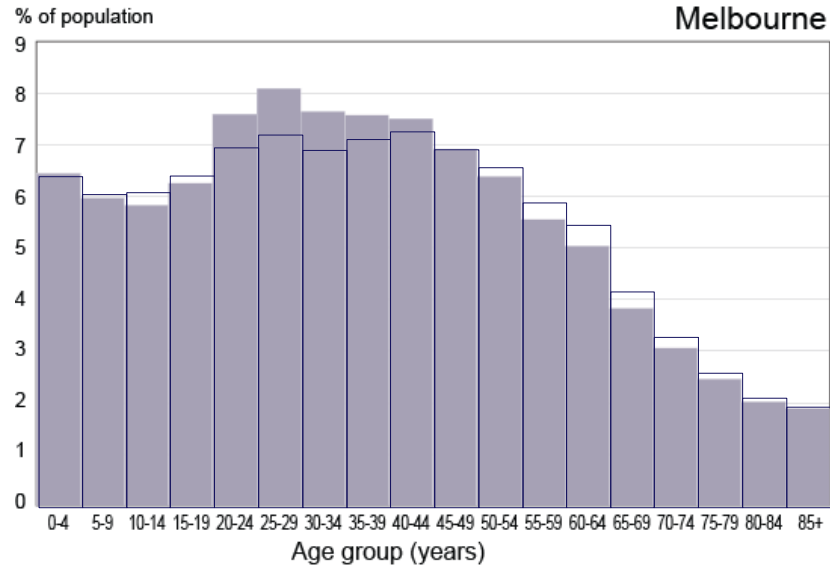
Proportion of population aged 75 years and over, Melbourne and Regional Victoria, 1981 to 2016



Source: SAR unpublished time-series database 1981-2001 based on enumerated census data;
ABS census 2016 LGA time-series profile based on usual residence

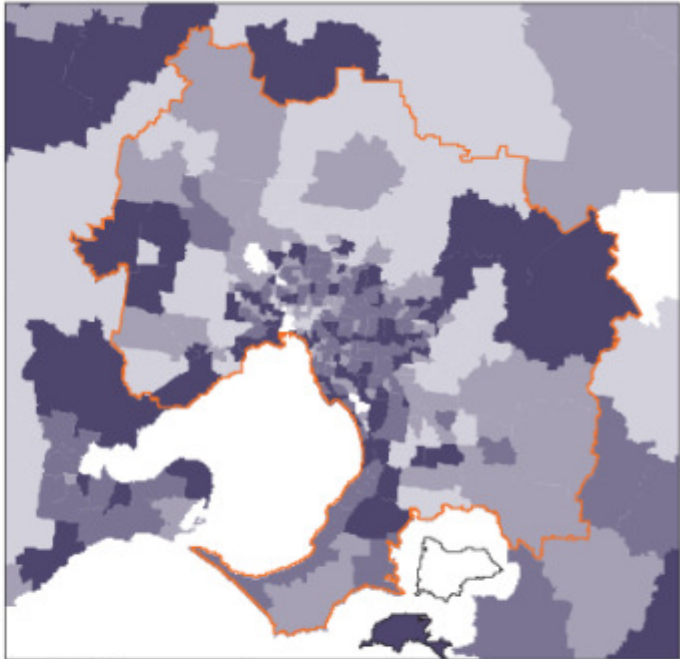
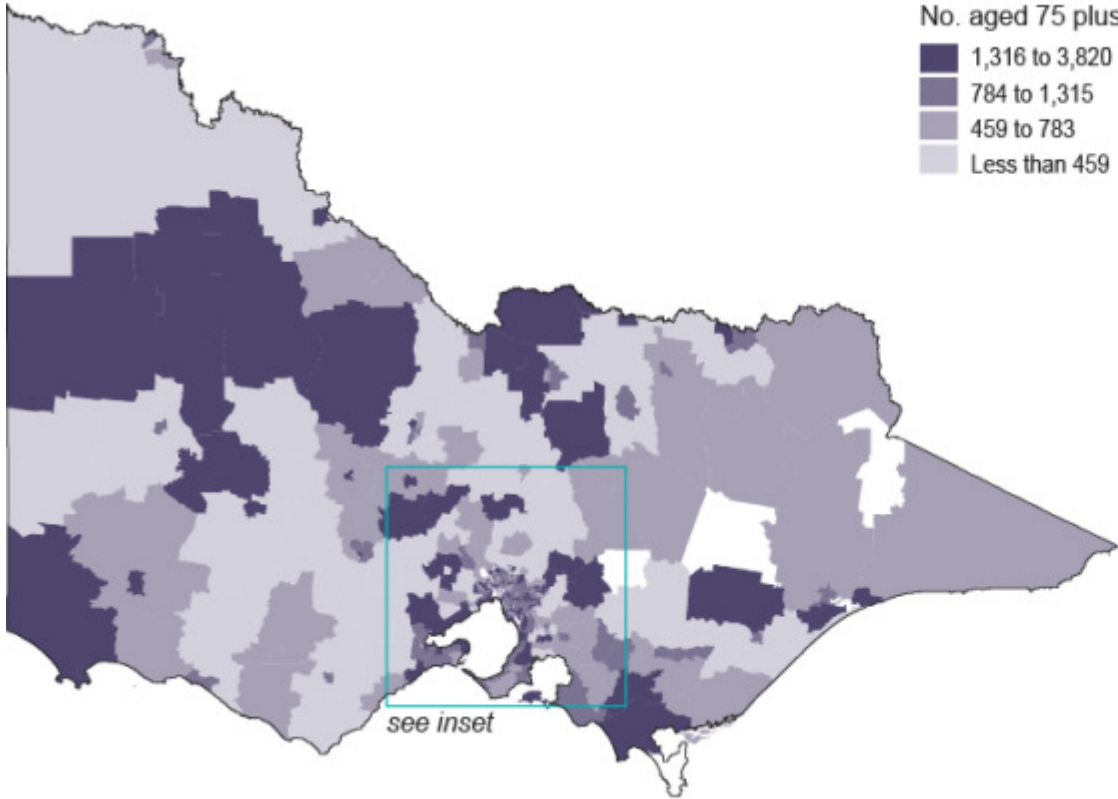
Population structure – variation over space

□ Victoria



Numbers aged 75 years and over 2016

Statistical Area Level 2 (SA2), place of usual residence

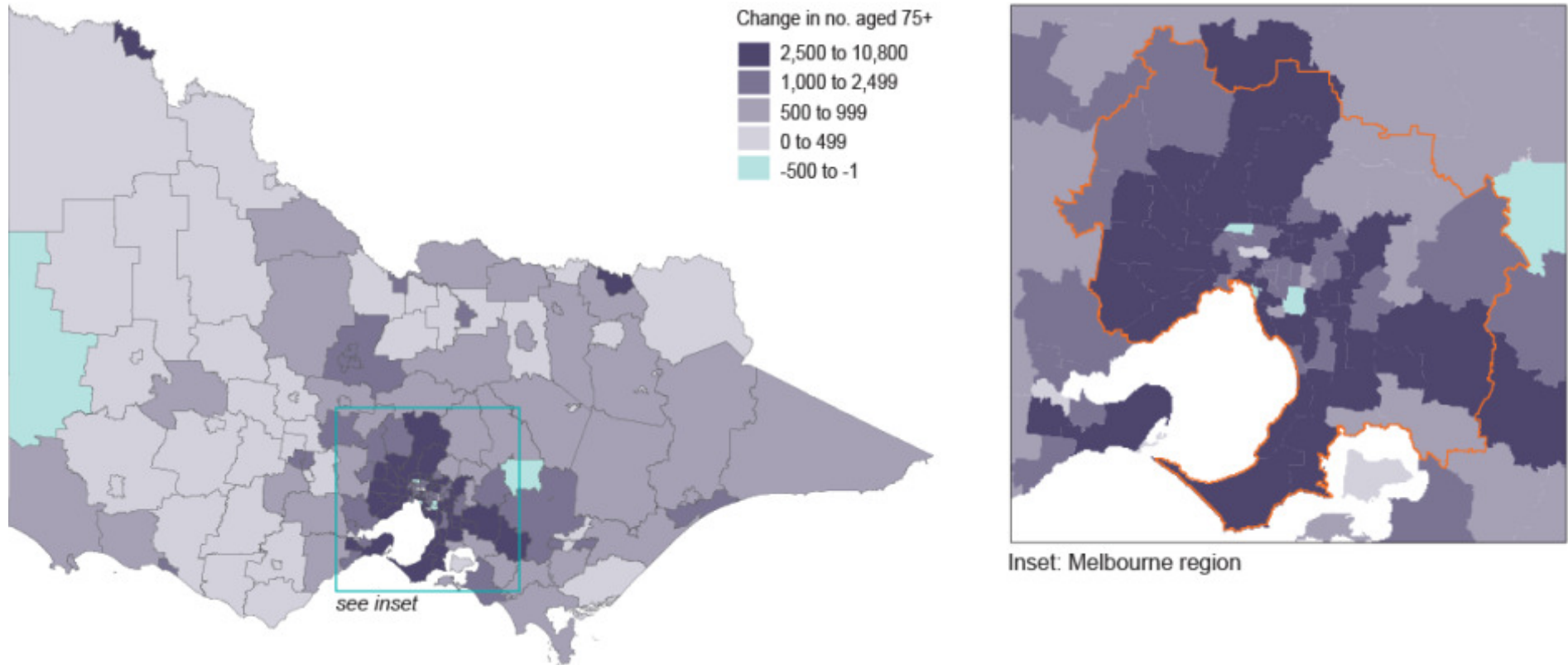


Inset: Melbourne region

Source: ABS Census 2016

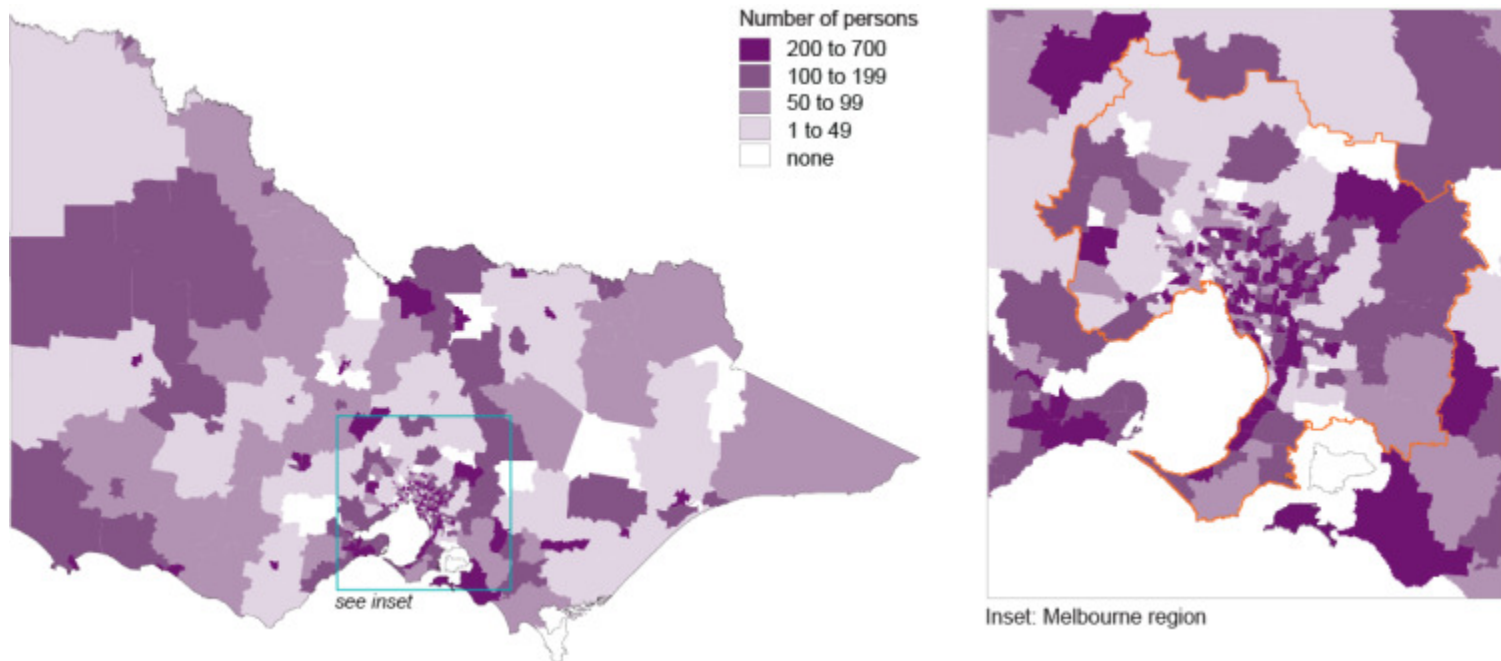
Areas with projected increase in 75+ year olds

Projected change in number of persons aged 75 years and over, VIF Statistical Area, 2016 to 2031



Policy considerations and challenges

- Demographics are dynamic - ageing in outer suburbia and peri urban, but renewal of young populations in central areas
- Do people move to the service or service move to people? Will inner urban demand for aged care increase in the future?
- Costs of provision and cost of purchase. What impacts of affordability?
- Low density / low population areas of the state? How to service?
- Populations are increasingly mobile. How flexible is our provision of aged services?



Persons aged 70+ living in non-private dwellings, SA2, 2016.

Source: ABS Census 2016